

NIGERIA - Borno State - Mafa LGA Settlement Profiling

General Infrastructure - As of October 2018

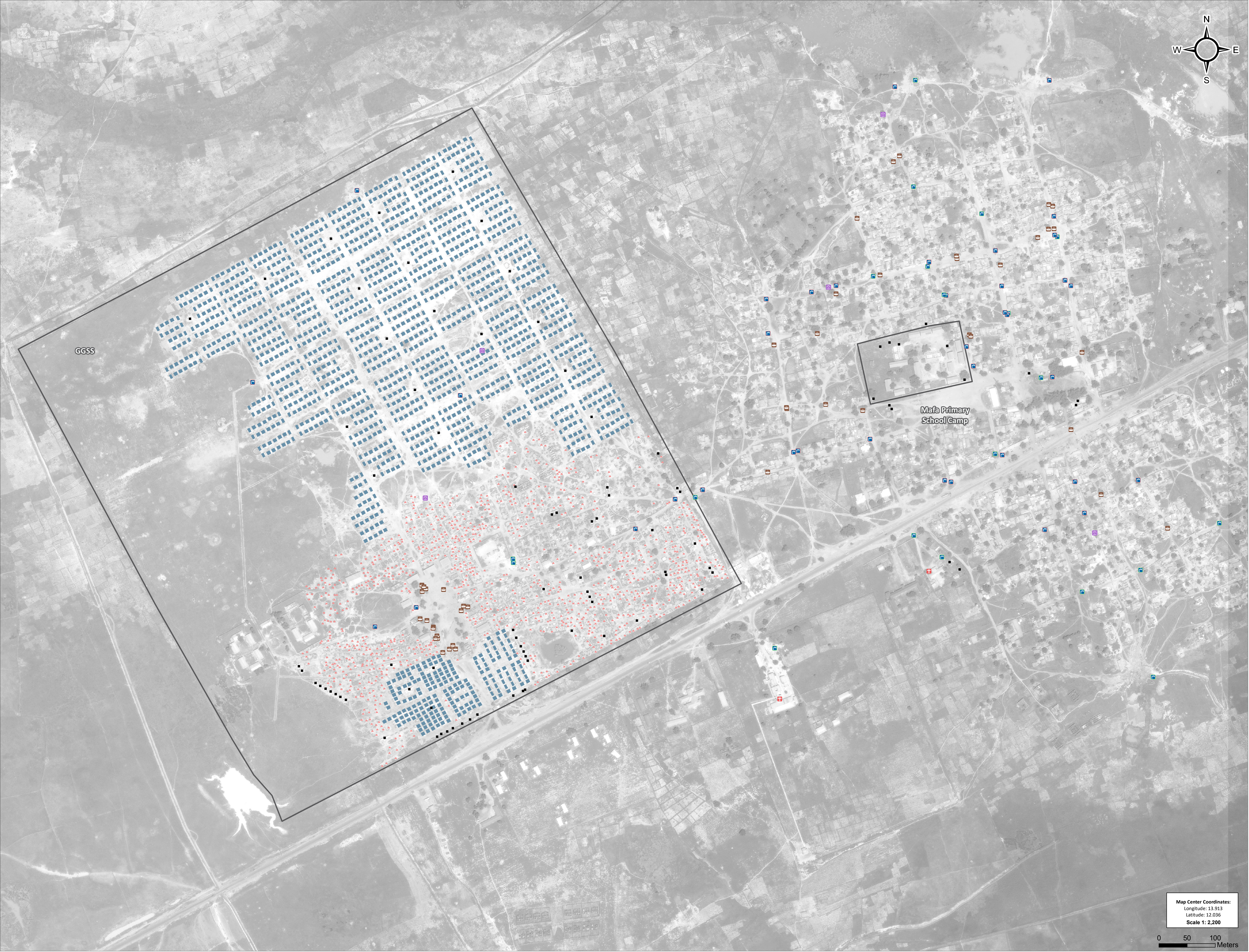
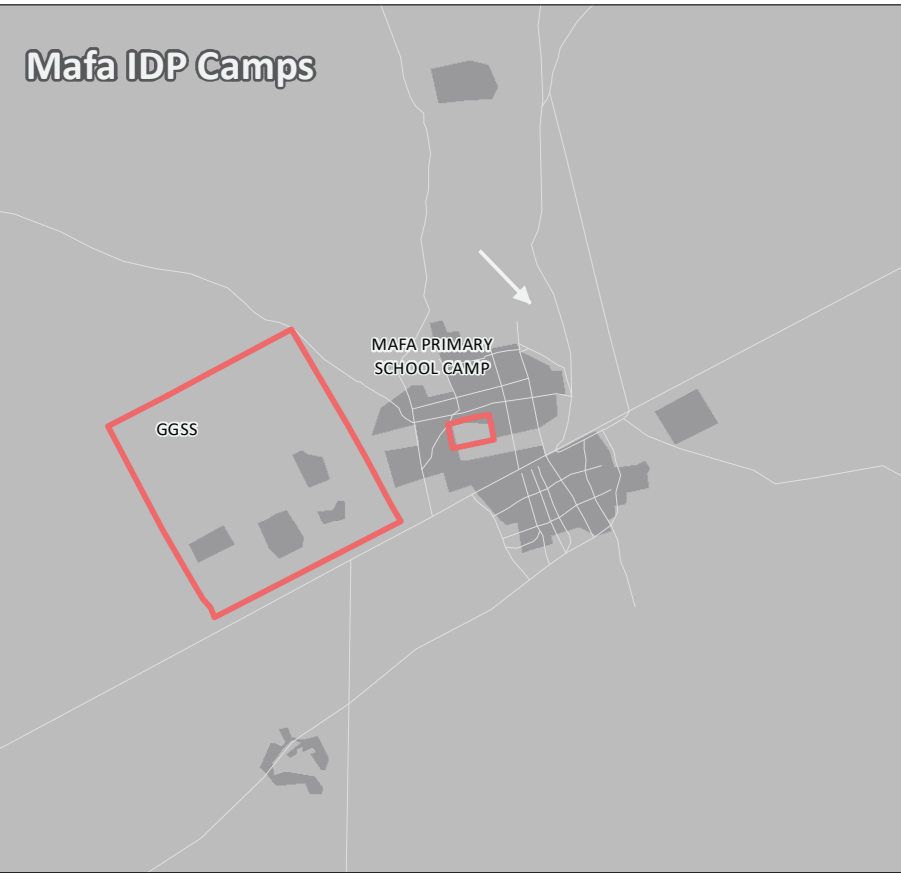
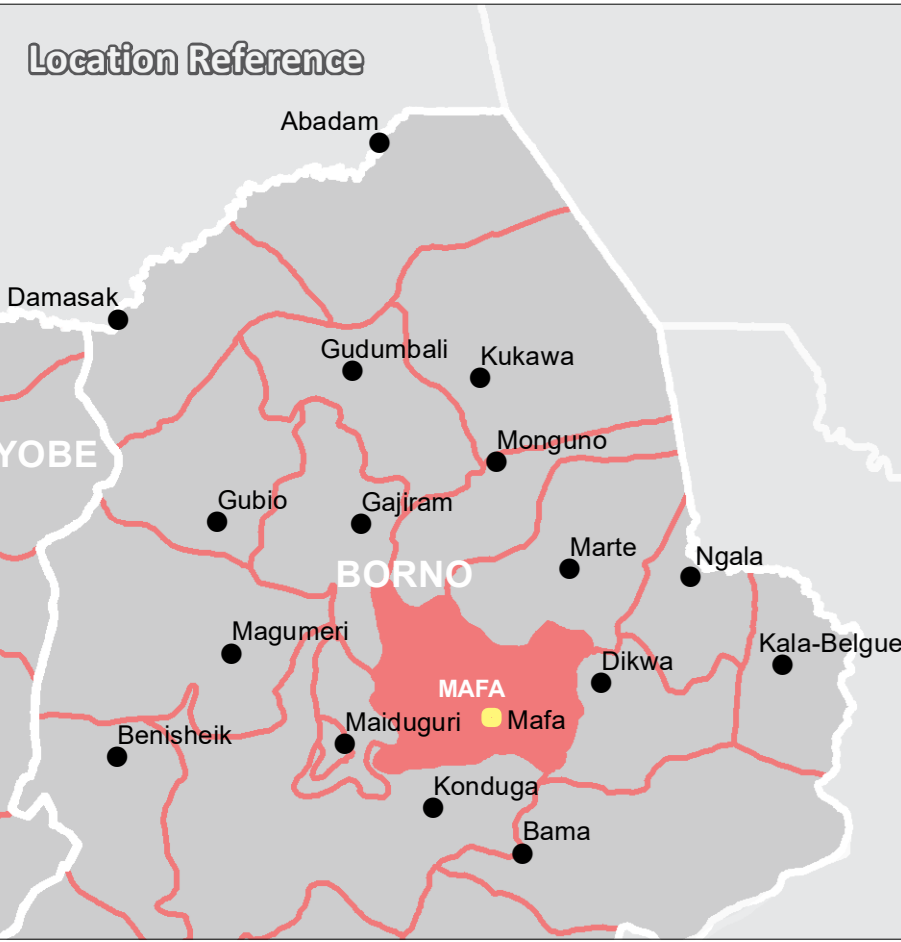
For Humanitarian Purposes Only
Production date :10 Jan 2018

Infrastructure

- Water Point (Fully/Partially Functional) (20)
- Water Point (Not Functional) (37)
- School (5)
- Market (47)
- Health Center (2)
- Latrines (88)
- Shelters and Tents (1,704)
- Camp Boundaries (2)

Camp infrastructure: REACH Initiative, October 2018
Administrative boundaries: OCHA
Satellite Imagery: GeoEye-1, 30 November 2018,
©2018 DigitalGlobe
Source: Humanitarian Information Unit, NextView License
Projection: WGS 1984
File: REACH_NGA_Map_LGA_Profiling_Infrastructure_Mafa_11Jan2019_A0
Contact : reach.nigeria@reach-initiative.org

Note: Data, designations and boundaries contained on this map are not warranted to be error-free and do not imply acceptance by the REACH partners, associates or donors mentioned on this map.



Map Center Coordinates:
Longitude: 13.913
Latitude: 12.036
Scale 1: 2,200

0 50 100
Meters