

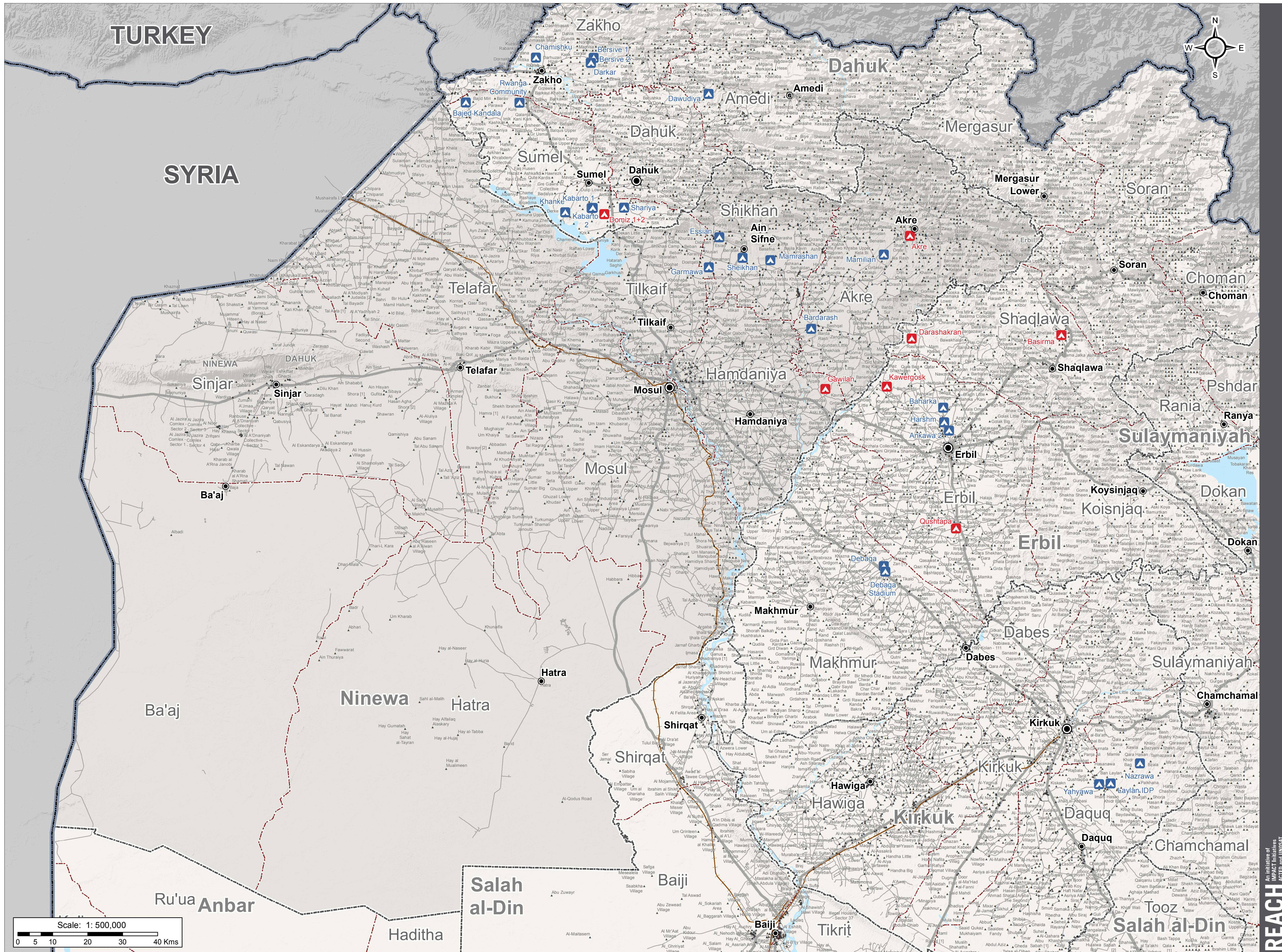
# IRAQ - Ninewa Governorate

As of July 2016

For Humanitarian Purposes Only  
Production date : 20 July 2016

## REFERENCE MAP

- Country Border
- Governorate Border
- District Border
- Governorate Capital
- District Capital
- Village
- Refugee Camp
- IDP Camp
- Lake/River
- Primary Road
- Secondary Road
- Railway



Camp location: CCCM and REACH, as of July 2016  
Administrative boundaries: OCHA, USDOS  
Settlements: OSM  
Roads and railways: OCHA, OSM  
Waters: OCHA, OSM  
Administrative boundaries: GADM  
Projection: WGS 1984 UTM Zone 38N  
Contact : [iraq@reach-initiative.org](mailto:iraq@reach-initiative.org)  
File: IRQ\_Map\_Iraq\_Ninewa\_Reference\_20Jul2016

Note: Data, designations and boundaries contained on this map are not warranted to be error-free and do not imply acceptance by the REACH partners, associates or donors mentioned on this map.



An initiative of  
IMPACT INITIATIVES  
ACTED and UNISAT  
**REACH**