



The Rapid Response Mechanism (RRM) is designed to monitor humanitarian action, conduct multisector assessments and intervene in NFI and WASH when there is no capacity on site. Currently RRM is made possible through the generous support of the CERF, Denmark, Ireland, Canada, European Commission's Humanitarian Aid and Civil Protection Department (ECHO), Global Thematic, OFDA and SIDA. All RRM products are available on the [Humanitarian Response](#) portal.

Activities : January - July 2016

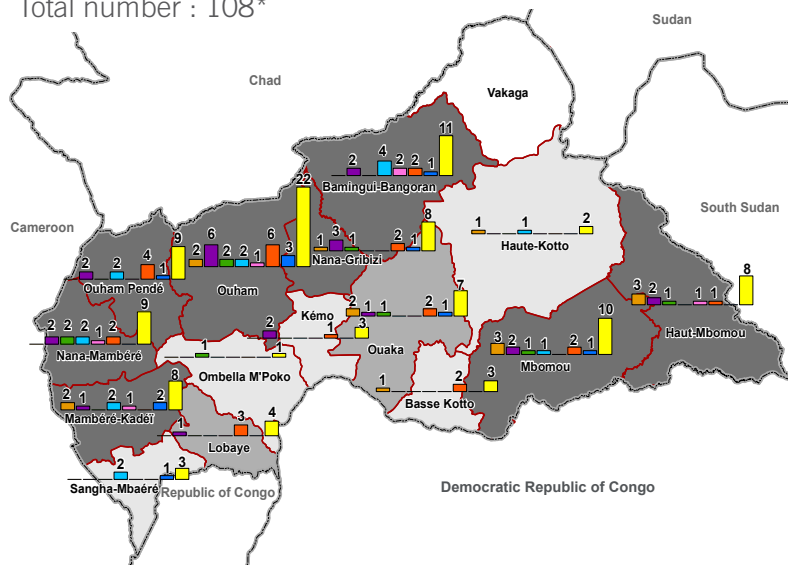
Ongoing activities are not taken into account.
The WASH package is adapted to the priority needs identified at each answer.

Exploratory missions (MEX)	47
Multisectoral assessments (MSA)	52 *
NFI Distributions	23 *
WASH Interventions	12
Hygiene sessions	44
Built emergency latrines	10
Rehabilitation of water sources	24

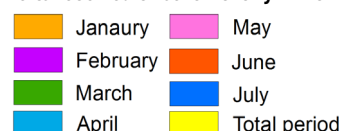
* Included the MSA of Mann and Gassai, and the NFI distributions of Agoumar and Bocaranga (June), non included in the last factsheets

Alerts received or sent by the RRM in 2016

Total number : 108*



Alerts received or sent monthly in 2016:



Number of alerts:

January - July 2016

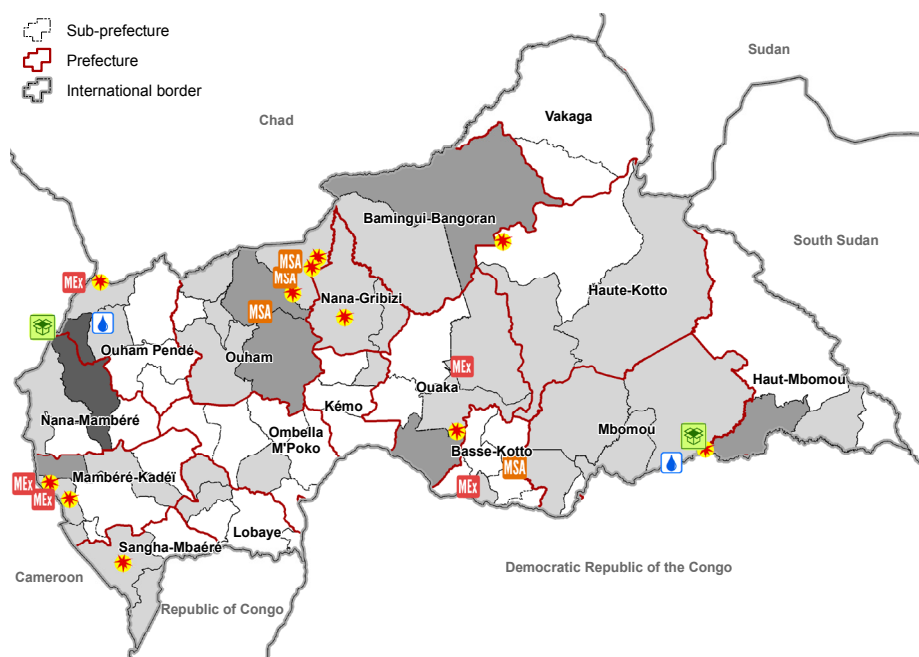
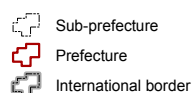


* Included the alert of Ippy, Serenga and Moroband (June), non included in the last factsheets

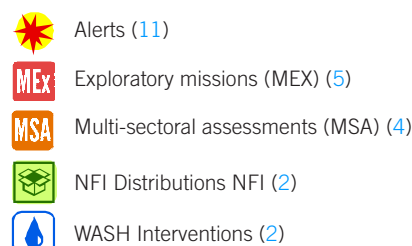
Beneficiaries : January-July 2016

NFI (beneficiaries)	90,249
NFI (households)	19,903
WASH (beneficiaries)	22,925

Overview of RRM activities in 2016

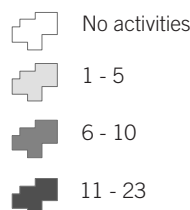


Activities completed : July 2016



Total number of activities (MEX, MSA et interventions):

January - June 2016



For more information, please contact :
RRM Coordinator, Maurice Vanfroy: mvanfroy@unicef.org
RRM Specialist, Eric Mpolesha: empolesha@unicef.org

REACH Informing more effective humanitarian action

07 01 - 31 July 2016
Monthly factsheet

Number of beneficiaries

NFI : 5,939 beneficiaries in July 2016

Number of beneficiaries in July 2016

NFI < 3 000

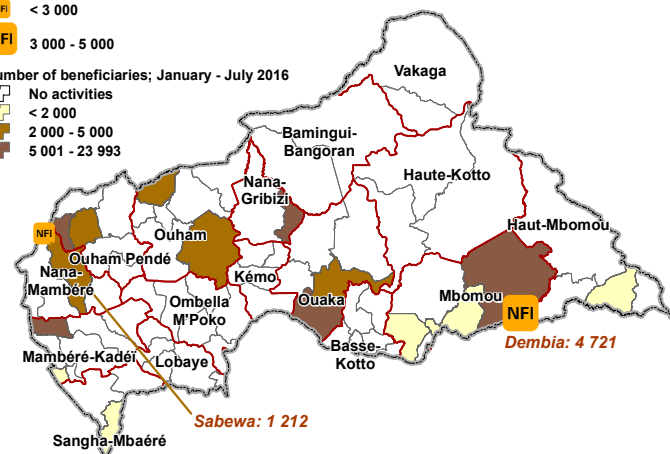
NFI 3 000 - 5 000

Number of beneficiaries; January - July 2016

No activities < 2 000

2 000 - 5 000

5 001 - 23 993



WASH : 3,505 beneficiaries in July 2016

Number of beneficiaries in July 2016

< 1 000

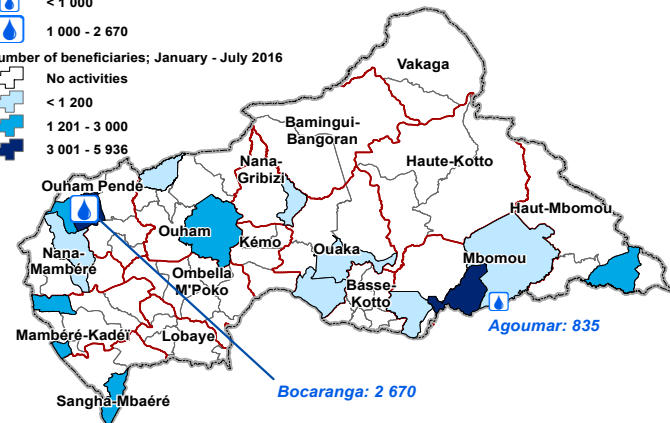
1 000 - 2 670

Number of beneficiaries; January - July 2016

No activities < 1 200

1 201 - 3 000

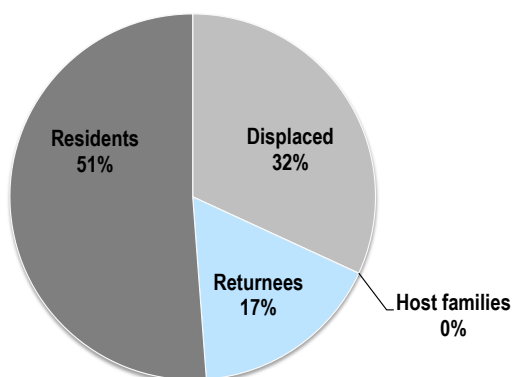
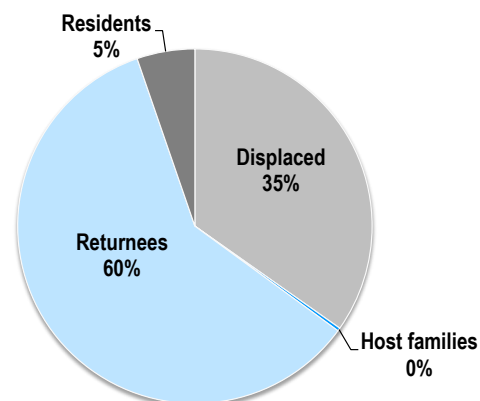
3 001 - 5 936



RRM in action



Status of beneficiaries : January - July 2016



NB: The term 'residents' refers to individuals that have not been displaced as the result of a humanitarian-related event and are not hosting anyone in their home. The term 'host family' refers to families who are hosting displaced, returnee or refugee persons in their home.

NB: Due to the absence of recent population data in the majority of communities in CAR, these figures are estimations.

Results of the post-distribution monitoring : January - June 2016

The 19 PDMs made between January and July 2016 have provided the following answers to the question about the overall beneficiary satisfaction with NFIs received:

- 87%** Completely satisfied
- 11%** Moderately satisfied
- 1%** Dissatisfied
- 1%** Not satisfied at all

