



IDP Camp Profile - Laylan 2

Kirkuk, Iraq
January 2017

Management agency: UNHCR
Manager/Focal point: Nigar Rahim Karim
Phone number: 7707516422
Email: Nkarim@irdglobal.org
Registration actor: UNHCR

Summary

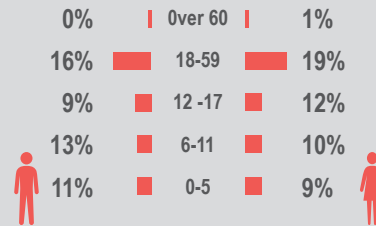
This profile provides an overview of conditions in Laylan 2 camp. Primary data was collected through household surveys on 24-01-2017. This was the first round of data collection for this camp. Households were randomly sampled to a 95% confidence and 10% margin of error, based on population figures provided by CCCM. In some cases, additional information from camp managers has been used to support findings.

Camp Overview

of individuals: 4,503
of households: 787
Date opened: 1-12-2016
Occupied number: 911
Ongoing extension: no
Planned capacity: 922
Camp area: 278,590m²

Demographics

50% male / 50% female

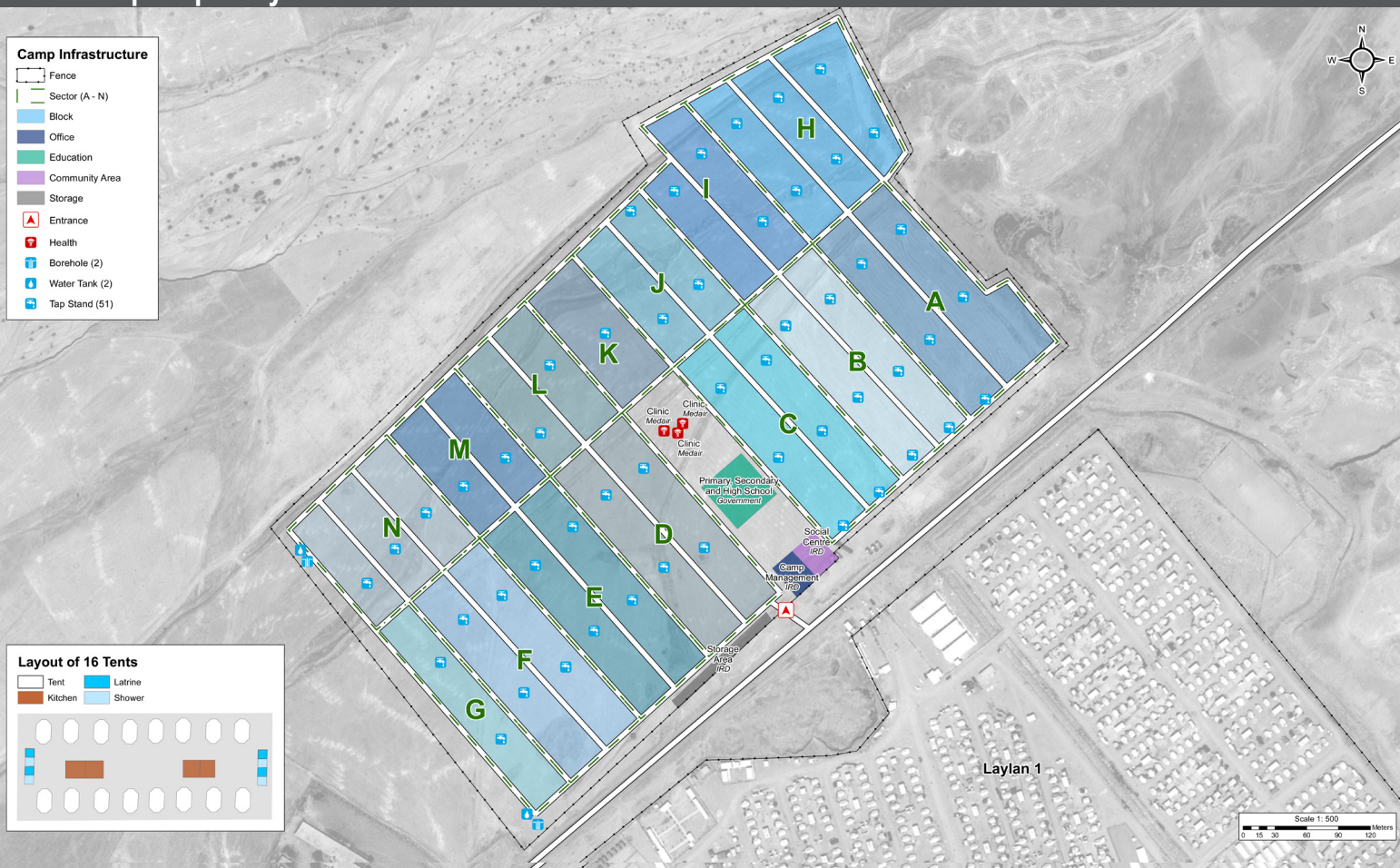


Location Map



IDP Camp Map - Laylan 2

Lat. 35° 19' 46.463" N Long. 44° 31' 45.155" E



Sectoral Minimum Standards

		Target	Previous Round	Current Round	Achievement
Education	% of children aged 6-11 attending formal school	100%	n/a	80%	●
	% of children aged 12-17 attending formal school	100%	n/a	62%	●
Food	% of households accessed Family Food Parcel or equivalent in the past month	100%	n/a	89%	●
Health	Health services are available on-site or within walking distance	Yes	n/a	Yes	●
CCCM	Average open area per household	min. 30m ²	n/a	325m ²	●
Protection	% of IDPs registered on an individual basis (MODM/DDM)	100%	n/a	22%	●
Shelter	Average covered area per person	min. 3.5m ²	n/a	3.1m ²	●
	Average number of individuals per shelter	max.5	n/a	5	●
WASH	# of persons per latrine	max. 20	n/a	20	●
	# of persons per shower	max. 20	n/a	20	●
	Frequency of solid waste disposal at least weekly	Min. weekly	n/a	Yes	●

Targets based on minimum standards agreed with the CCCM Cluster, Iraq. Findings based on household-level data, enumerator field observations, and camp management documentation
 ● Minimum standard reached, ● More than 50% minimum standard reached, ● Less than 50% of minimum standard reached or not at all





IDP Camp Profile - Laylan 2

Kirkuk, Iraq
January 2017

Management agency: UNHCR
Manager/Focal point: Nigar Rahim Karim
Phone number: 7707516422
Email: Nkarim@irdglobal.org
Registration actor: UNHCR

Shelter

Top observed shelter type

Tent 100%

Top reported needed shelter items

Tarpaulin 76%

Sun shading net 75%

Rope 64%

Top reported needed basic items

Blanket 94%

Mattresses 78%

Cooker 64%

Top reported needed winter item

Kerosene heater 73%

Top reported needed summer item

Rechargeable fan 88%

Food Security

Reported access to food assistance

89% accessed food assistance in past month

52% received Public Distribution System (PDS) in past month

Top three food consumption coping strategies

Cheaper 67%

Less meals 41%

Smaller meals 36%

WASH

Latrines and showers

100% reported public or communal latrines

100% public/communal latrines lockable from the inside

23% public/communal latrines with functioning lighting

Top three reported methods of waste removal

Collected 100%

n/a n/a

n/a n/a

Reported drinking water sources

0% connection inside the home to collective water storage

0% connection inside the home to private water storage

100% communal water tap outside the shelter

Access to water

22% reported 24 consecutive hours without access to water in the past month

Community Organisation

IDP committees

100% reported awareness of IDP committee(s)

Complaints mechanism

0% made a complaint about conditions or assistance

Protection

Family Separation

1% reported hosting unaccompanied or separated minors

18% reported that other family members intended to join them

Vulnerable groups

Pregnant / lactating women 11%

Chronically ill individual(s) 5%

Disabled individual(s) 4%

Female headed households 31%

Intentions

5% planned to move to a different location in next 3 months

Restrictions

n/a reported being able to leave the camp temporarily (e.g. to go to the market, for livelihood opportunities)

Livelihoods

33% reported as being economically inactive

Top three income sources*:

Humanitarian aid 50%

No livelihood 33%

Government aid 30%

*Households were asked to select all income sources within household.

Top three reported livelihood coping strategies

Spent savings 11%

Selling assets 10%

Debt 5%