

Summary

This profile provides an overview of water, sanitation and hygiene (WASH) infrastructure within Camp 13 in Ukhia, Cox's Bazar. Primary data for the sixth round was collected between 22 April - 12 May 2018.¹ Findings should be considered indicative only. The full camp dataset is available on [HDX](#).

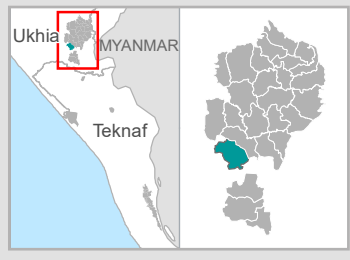
Site Overview

| | |
|-------------------------------|--------|
| # of individuals: | 42,889 |
| # of households: | 10,096 |
| # of shelters: | 4,620 |
| # of individuals per shelter: | 9.3 |

Key WASH Infrastructure

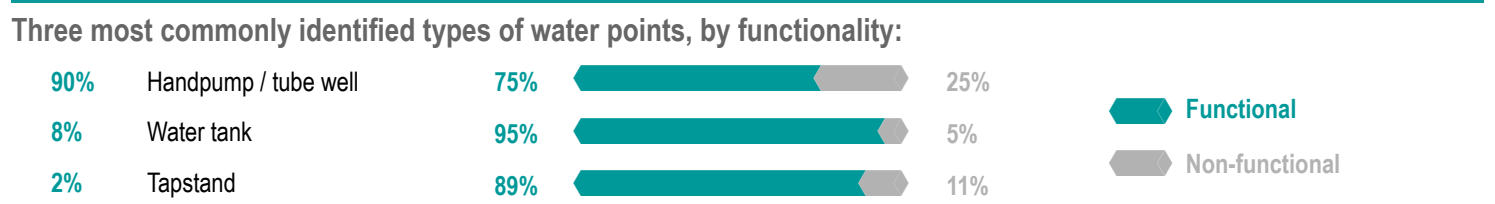
| | |
|---|-------------|
| # of latrines: (% functional and safe ²): | 1,325 (82%) |
| # of improved water sources: ³ (% functional): | 485 (83%) |
| # of washrooms: | 570 |

Location Map





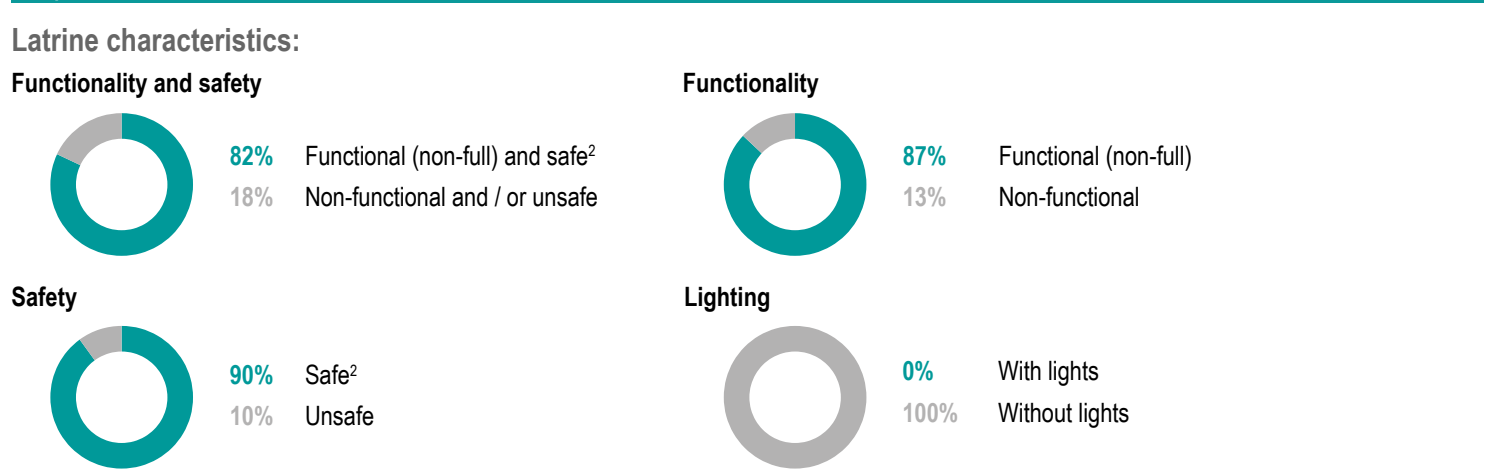
Water Access



| Key sectoral standards: | Target | Current Round | Achievement |
|---|----------|---------------|-------------|
| # of people per functional improved water source ³ | max. 250 | 107 | <div></div> |
| % of shelters with at least 1 functional improved water source ³ within 200m | 100% | 100% | <div></div> |
| % of functional improved water source with no latrine within 10m | 100% | 38% | <div></div> |



Sanitation



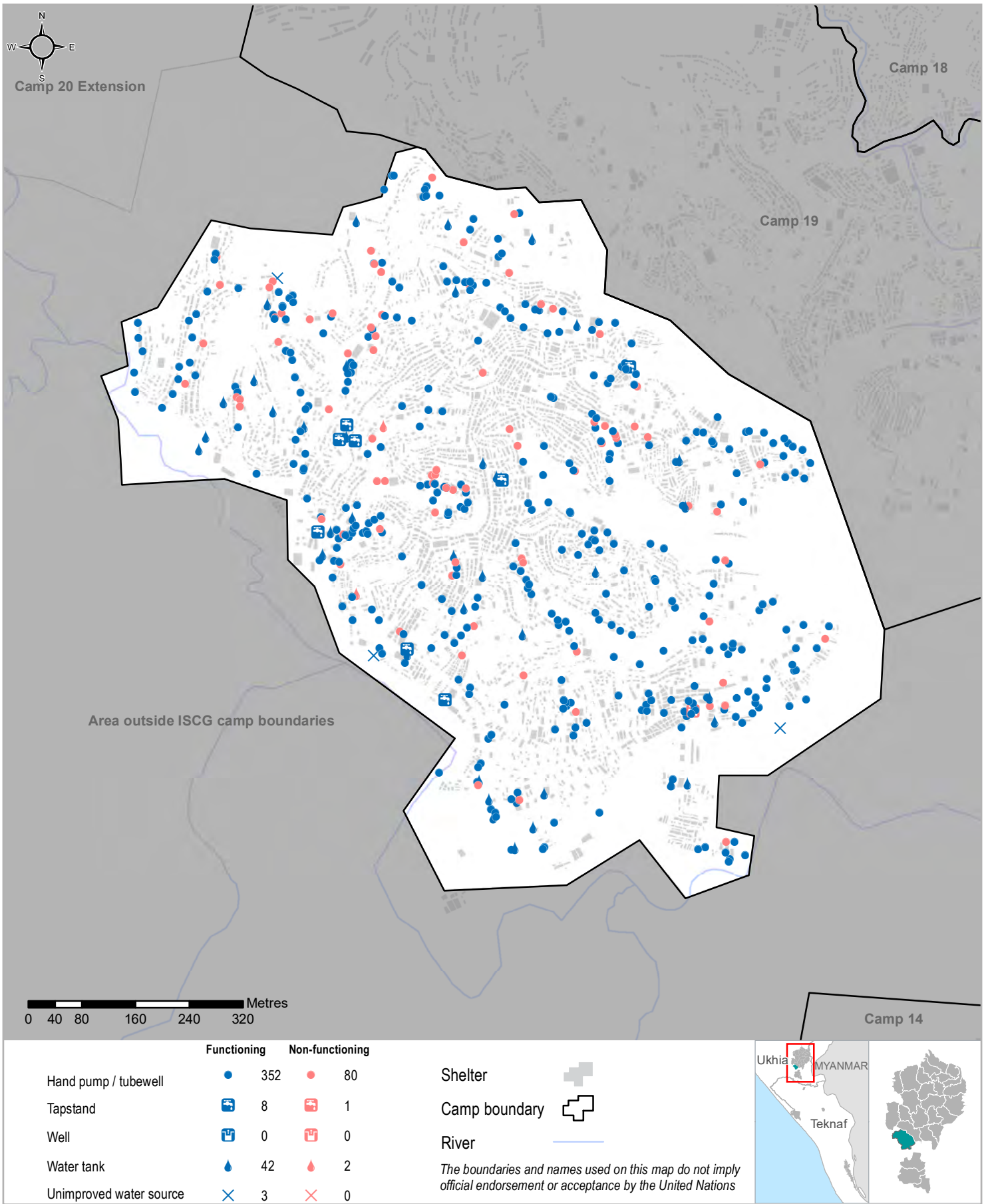
| Key sectoral standards: | Target | Current Round | Achievement |
|---|---------|---------------|-------------|
| # of people per functional (non-full) and safe latrine ² | max. 20 | 40 | <div></div> |
| # of people per functional (non-full) latrine | max. 20 | 37 | <div></div> |
| # of people per safe latrine ² | max. 20 | 36 | <div></div> |
| % of shelters with at least one functional and safe latrine ² block within 50m | 100% | 99% | <div></div> |

Targets based on long term WASH Sector Standards / Indicators for the Rohingya response, Sphere Minimum Standards as well as Department of Public Health and Environment (DPHE) Minimum Standards. ● Minimum standard/indicator reached, ● 75-99% of the minimum standard reached, or within 26-50% of minimum standard reached, ● 50-74% of the minimum standard reached, or within 26-50% of minimum standard reached, ● Less than 50% of minimum standard reached, or within greater than 50% of minimum standard reached.

1 REACH enumerators conducted a full sweep of all sites and camps (as per boundaries defined by ISCG) and used a Kobo form to log all key infrastructure observed during this sweep.
 2 'Safe' refers to fully covered latrines (i.e. a latrine with four walls, a roof and a lockable door).
 3. This includes handpumps / tubewells, tapstands and water tanks.



Water Access





Sanitation

