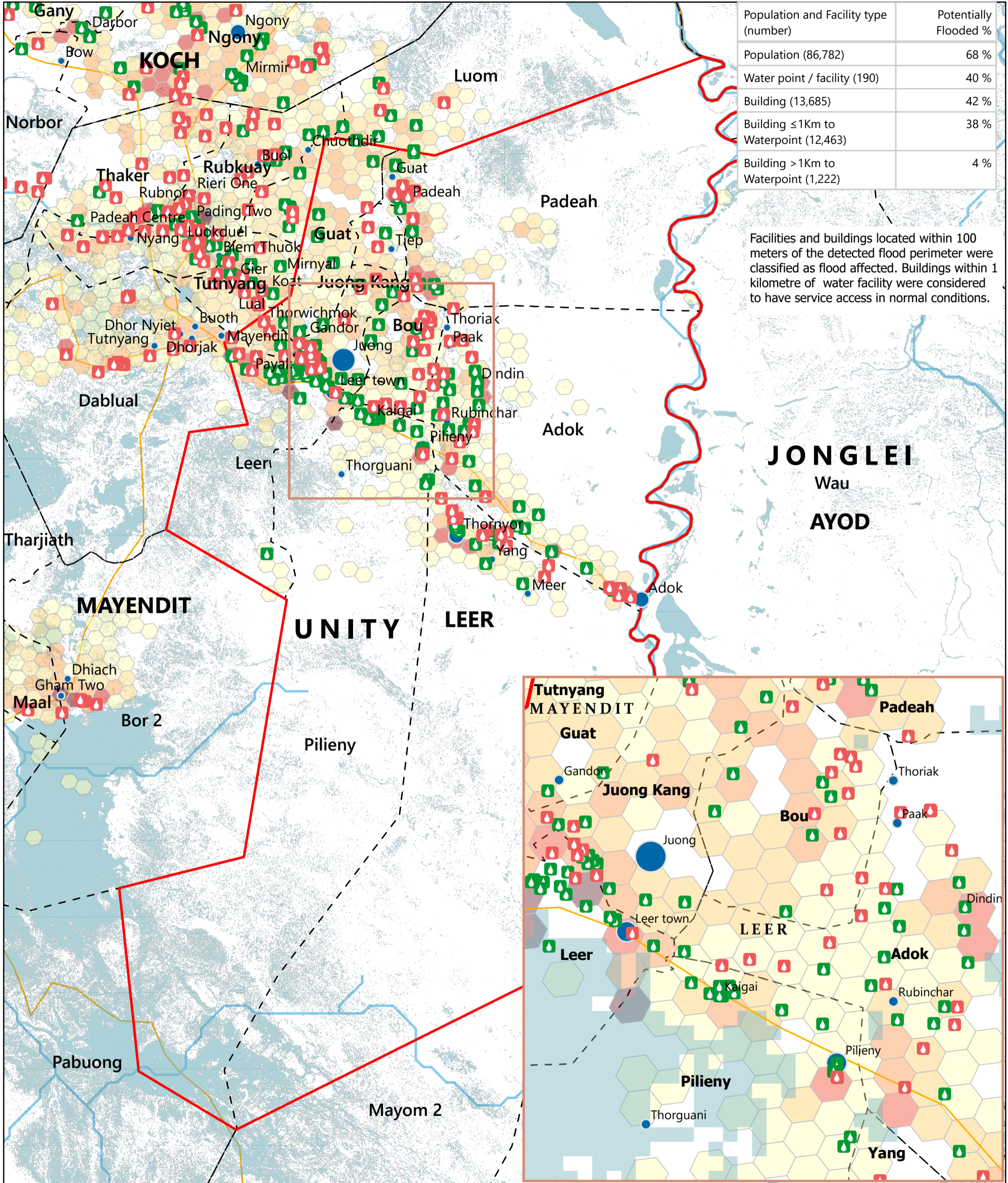


# SOUTH SUDAN - Leer County

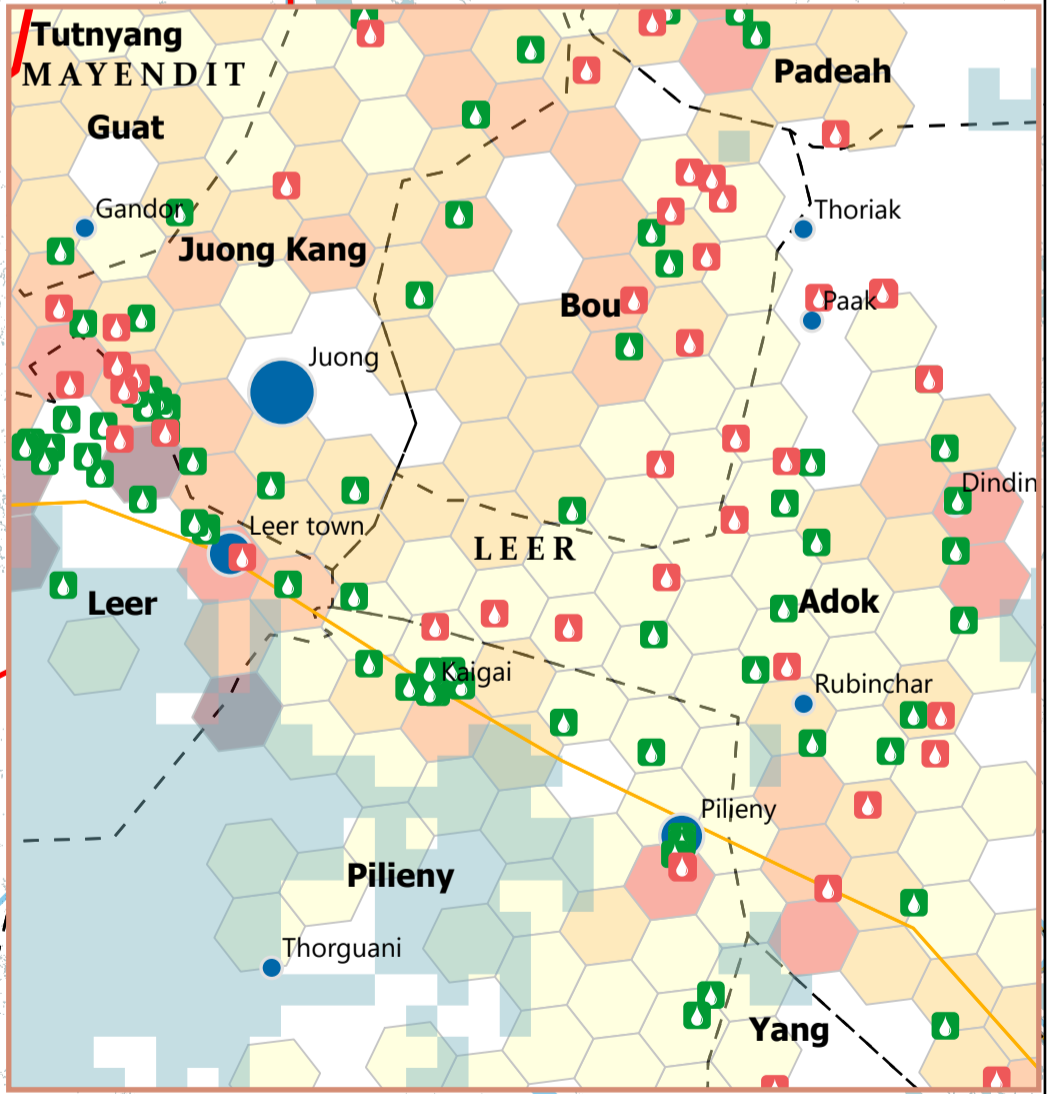
## Flood Impact Map: Water Facilities (October 2025)

For Humanitarian Purposes Only  
Production Date: 22 October 2025



Population and Facility type (number)	Potentially Flooded %
Population (86,782)	68 %
Water point / facility (190)	40 %
Building (13,685)	42 %
Building ≤ 1Km to Waterpoint (12,463)	38 %
Building > 1Km to Waterpoint (1,222)	4 %

Facilities and buildings located within 100 meters of the detected flood perimeter were classified as flood affected. Buildings within 1 kilometre of water facility were considered to have service access in normal conditions.



**Population (Kontur, 2023)**

- 1 - 100
- 101 - 250
- 251 - 500
- 501 - 750
- > 750

**Settlements (Population)**

- < 5,000
- 5,001 - 10,000
- > 10,000

**Legend:**

- Unaffected Waterpoint (Green triangle)
- Potentially Affected Waterpoint (Red triangle)
- Roads (Yellow line)
- River (Blue line)
- Focus County (Red outline)
- Payam (Dashed line)
- County (Dotted line)
- State (Grey outline)

Satellite-detected flood extent (FEWSNET, as of 30th September 2025)

North arrow and scale bar (0, 5, 10 Km).

Data sources: Source: REACH, OCHA, UNMISS, IOM, DTM, UNOSAT, FEWSNET, WHO, IOM, DTM, Global Google-Microsoft Open Buildings Dataset (2023)  
Coordinate System: Name: GCS WGS 1984  
File: REACH\_SSD\_Map\_Unity\_Leer\_Flood\_Impact\_Water\_22\_Oct\_2025  
Contact: reach.mapping@impact-initiatives.org

Note: Data, designations and boundaries contained on this map are not warranted to be error-free and do not imply acceptance by REACH partners, associates or donors mentioned on this map.