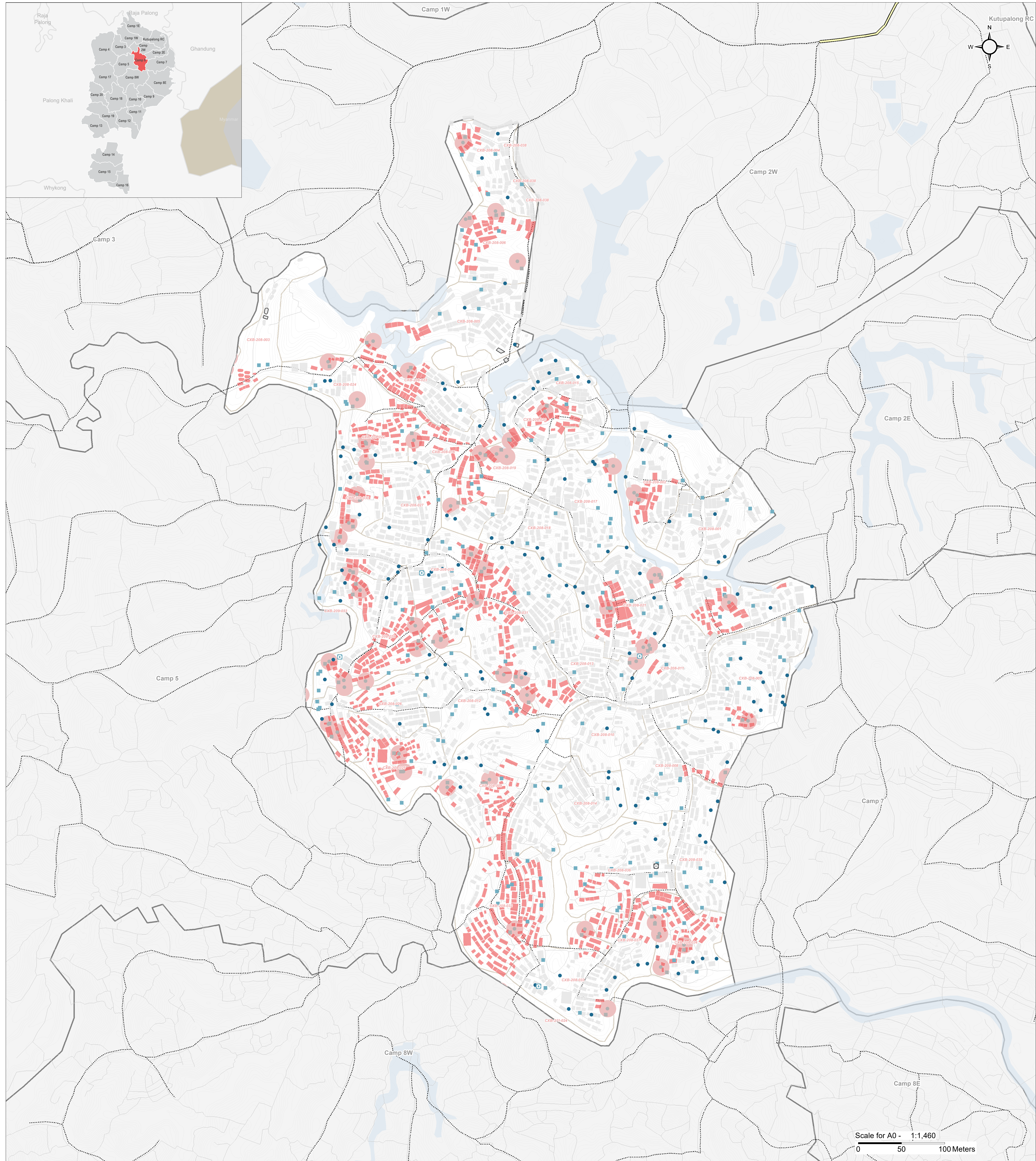


# BANGLADESH - Rohingya Refugee Crisis - Cox's Bazar District

## Camp 6 - Handpump and Tubewell Proximity to Latrines

For Humanitarian Purposes Only  
Production date: 12 April 2018



**Handpumps/Tubewells**

- Functioning handpumps/tubewells >10m to latrine (150)
- Functioning handpumps/tubewells <=10m to latrine (58)
- River; Water Body
- Elevation Contours
- 10m buffer from handpump/tubewell <10m from latrine (55)

**Shelters (Emergency Sphere distance to a latrine: 50m)**

- Shelters outside the sphere standards (5)
- Shelter w/ nearest functioning handpump <10m from latrine (1,044)
- Shelters nearest functioning handpump >10m from latrine (2,197)

**Sanitation**

- Functioning latrines >10m from a functioning handpump/tubewell (182)
- Latrine <=10m from functioning handpump/tubewell (63)
- Open defecation point (designated area) (4)
- Decommissioned latrine (1)

**Road network**

- Highway
- Military Road / Vehicle Road
- Main Path
- Footpath
- Pathways

**Boundaries**

- Majhee Blocks (40)
- Neighboring camps
- Camp boundary

**Data Sources:**  
Camp Infrastructure - REACH (13/02/2018)  
Health facilities: Health Sector - Cox Bazar  
Shelter Footprints - REACH / UNOSAT (13/02/2018)  
Roads / Footpaths - ISCG / OSM / REACH  
Camp / Majhee / Admin Boundaries - ISCG / IOM / OCHA

**Coordinate System:** WGS 1984 UTM Zone 46N  
**Projection:** Transverse Mercator  
**Contact:** reach.mapping@impact-initiatives.org

**Note:** Data, designations and boundaries contained on this map are not warranted to be error-free and do not imply acceptance by the REACH partners, associates, donors mentioned on this map.

**\* Reach data can be found on:**  
**HDX**  
Humanitarian Data Exchange

In support of the  
**WASH Sector**  
Cox's Bazar

Funded by  
**unicef**

In partnership with  
**UNOSAT**  
United Nations Satellite Centre

**REACH** An initiative of  
IMPACT Initiatives  
ACTED and UNOSAT