



# IDP Camp Profile - Chamishku

Dahuk, Iraq  
December 2015

Management agency: BRHA  
Manager/Focal point: Diler ahmad muhamad saleh  
Phone number: 7504575088  
Email: Chammishkoo@gmail.com  
Registration actor: BRHA

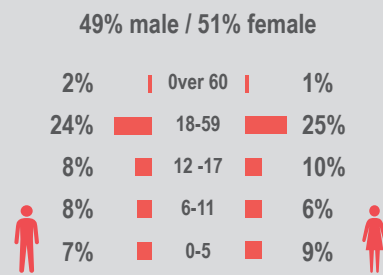
## Summary

This profile provides an overview of conditions in Chamishku camp. Primary data was collected through household surveys on 27/12/2015. Households were randomly sampled to a 95% confidence and 10% margin of error, based on population figures provided by CCCM. In some cases, additional information from camp managers has been used to support findings. Round III of data collection was in September 2015.

## Camp Overview

# of individuals: 25915  
# of households: 4289  
Date opened: 16/11/2014  
Accommodation: 4993  
Ongoing extension: no  
Planned capacity: n/a  
Camp area: 0.76 km<sup>2</sup>

## Demographics

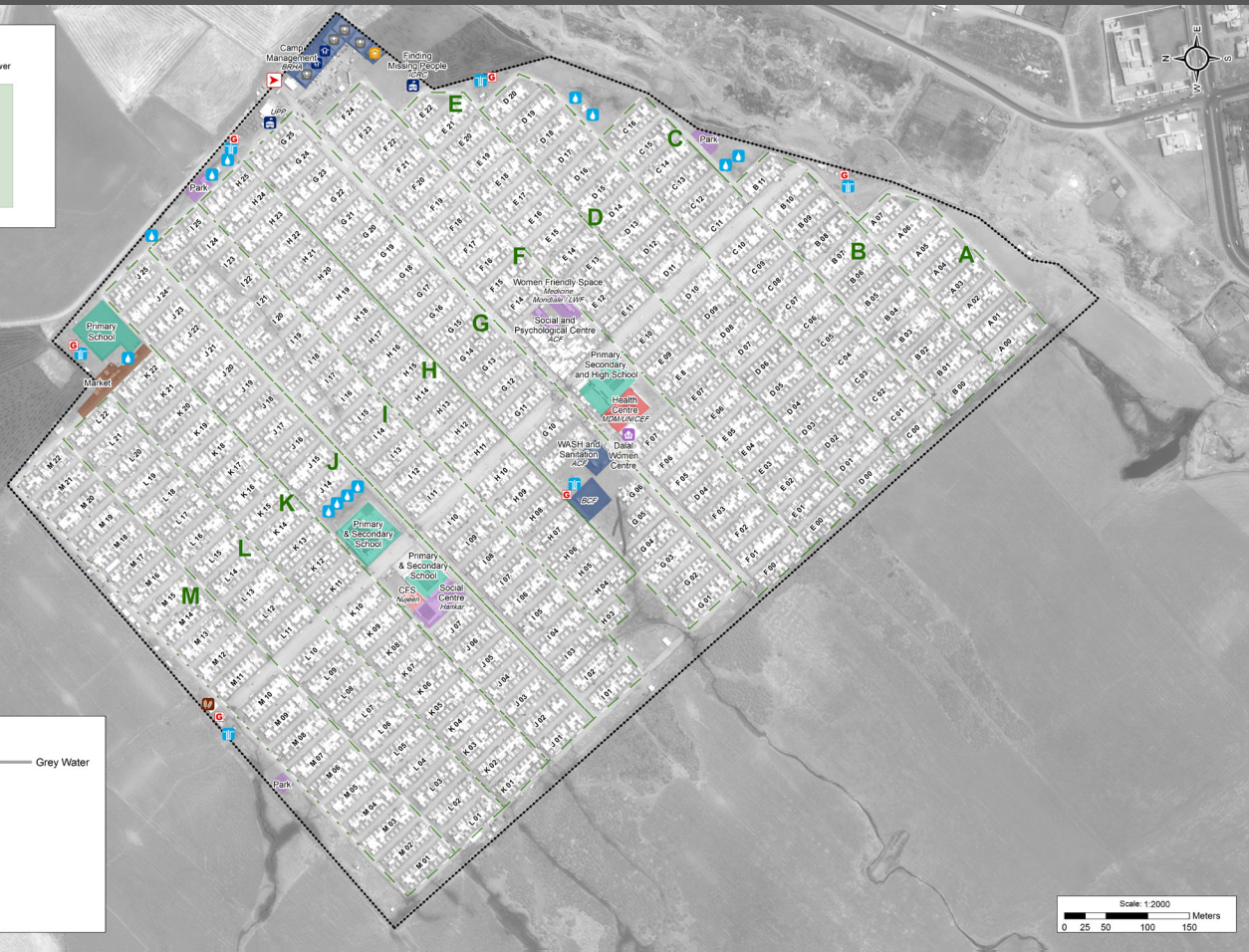
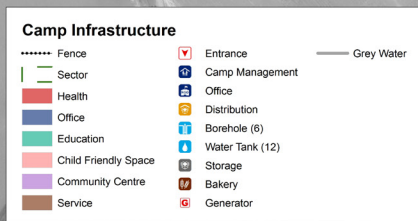
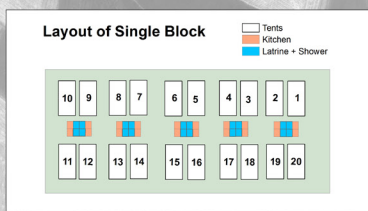


## Location Map



## IDP Camp Map - Chamishku

Lat.37° 10' 38.84" N Long. 42° 40' 1.47" E



## Sectoral Minimum Standards

		Target	Previous Round	Current Round	Achievement
Education	% of children aged 6-11 attending formal school	100%	64%	78%	●
	% of children aged 12-17 attending formal school	100%	73%	63%	●
Food	% of households accessed Family Food Parcel or equivalent in the past month	100%	93%	100%	●
Health	Health services are available on-site or within walking distance	yes	yes	yes	●
CCCM	Average open area per household	min. 30m <sup>2</sup>	115m <sup>2</sup>	149 m <sup>2</sup>	●
Protection	% of IDPs registered on an individual basis (MODM/DDM)	100%	99%	97%	●
	% of households accessed shelter assistance since arrival at the camp	100%	100%	88%	●
	Average covered area per person	min. 3.5m <sup>2</sup>	3.7m <sup>2</sup>	3.1 m <sup>2</sup>	●
Shelter	Average number of individuals per tent	max.5	5	5	●
	# of persons per latrine	max. 20	5	5	●
	# of persons per shower	max. 20	5	5	●
WASH	Frequency of solid waste disposal at least weekly	min. weekly	yes	yes	●

Targets based on minimum standards agreed with the CCCM Cluster, Iraq. Findings based on household-level data, enumerator field observations, and camp management documentation  
● Minimum standard reached, ● More than 50% minimum standard reached, ● Less than 50% of minimum standard reached or not at all



# IDP Camp Profile - Chamishku

Dahuk, Iraq  
December 2015

Management agency: BRHA  
Manager/Focal point: Diler ahmad muhamad saleh  
Phone number: 7504575088  
Email: Chammishkoo@gmail.com  
Registration actor: BRHA

## Shelter

### Top three observed shelter types\*

Tent on cement base	100%	<div></div>
n/a	n/a	
n/a	n/a	

\*Households were asked to select all shelter typologies within household.

### Winterization and household items

12%	reported a second fly sheet
0%	reported at least one stove or space heater
14%	reported at least one blanket per person
1	average number of carpets per HH
7	average number of mattresses per HH

### Hazards

16%	reported exposed electrical cables at site
-----	--

### Shelter Improvement

80%	reported making own improvements to their shelter
202 USD	average total reported cost of shelter improvements

\*Conversion rate: 1 USD = 1,106.37 IQD

### Households reporting flooding in past three months, by type

No flooding	99%	<div></div>
Flooding (temporary damage)	0%	
Flooding (permanent damage)	1%	<div></div>

## Household Income

31%	reported a household income of under 10 USD in the past month (including aid, gifts or pension)
61%	reported humanitarian aid within top three sources of livelihood in past month

## Protection

### Family Separation

0%	reported hosting unaccompanied or separated minors
1%	reported that other family members intended to join them

### Vulnerable groups

Pregnant / lactating women	13%	<div></div>
Chronically ill individual(s)	6%	<div></div>
Disabled individual(s)	2%	<div></div>

### Intentions

0%	planned to move to a different location in next 3 months
----	--

### Restrictions

0%	reported entry or exit restrictions during daylight hours
----	---

### Documentation

10%	reported missing civil documents
-----	----------------------------------

## Food Security and Coping Strategies

### Reported access to food assistance

100%	accessed food assistance in past month
99%	received Public Distribution System (PDS) in past month

### Top three reported food consumption coping strategies

Cheaper Food	57%	<div></div>
Borrowed Food	28%	<div></div>
Less meals	14%	<div></div>

### Top three reported livelihood coping strategies

Spent savings	67%	<div></div>
Bought food on credit	48%	<div></div>
Spent less money	23%	<div></div>

## WASH

### Latrines and showers

100%	reported access to functional latrines
100%	reported access to functional showers

### Top three reported methods of waste removal

Communal Bin	80%	<div></div>
Collected	14%	<div></div>
Throw in street	6%	<div></div>

### Primary reported drinking water source

0%	connection inside the home to collective water storage
100%	connection inside the home to private water storage
0%	communal water tap outside the shelter
0%	purchased from shop
0%	open well
0%	other source

### Access to water

0%	reported 24 consecutive hours without access to water in the past month
----	---

## Community Organisation

### IDP committees

100%	reported awareness of IDP committee(s)
------	--

Of these, IDPs reported that camp committees were as follows:

94%	representative of camp composition
15%	included female representation
29%	had elected representative(s)
81%	had a complaints mechanism

### Access to fire-extinguishers

80%	reported awareness of available fire-extinguishers
-----	--