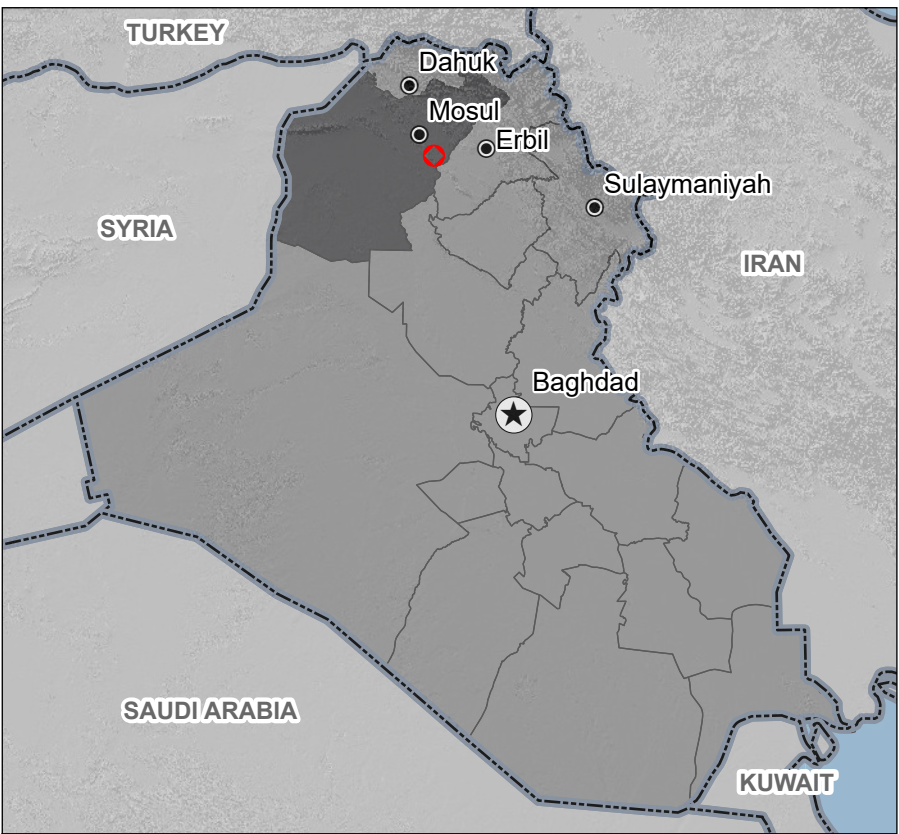
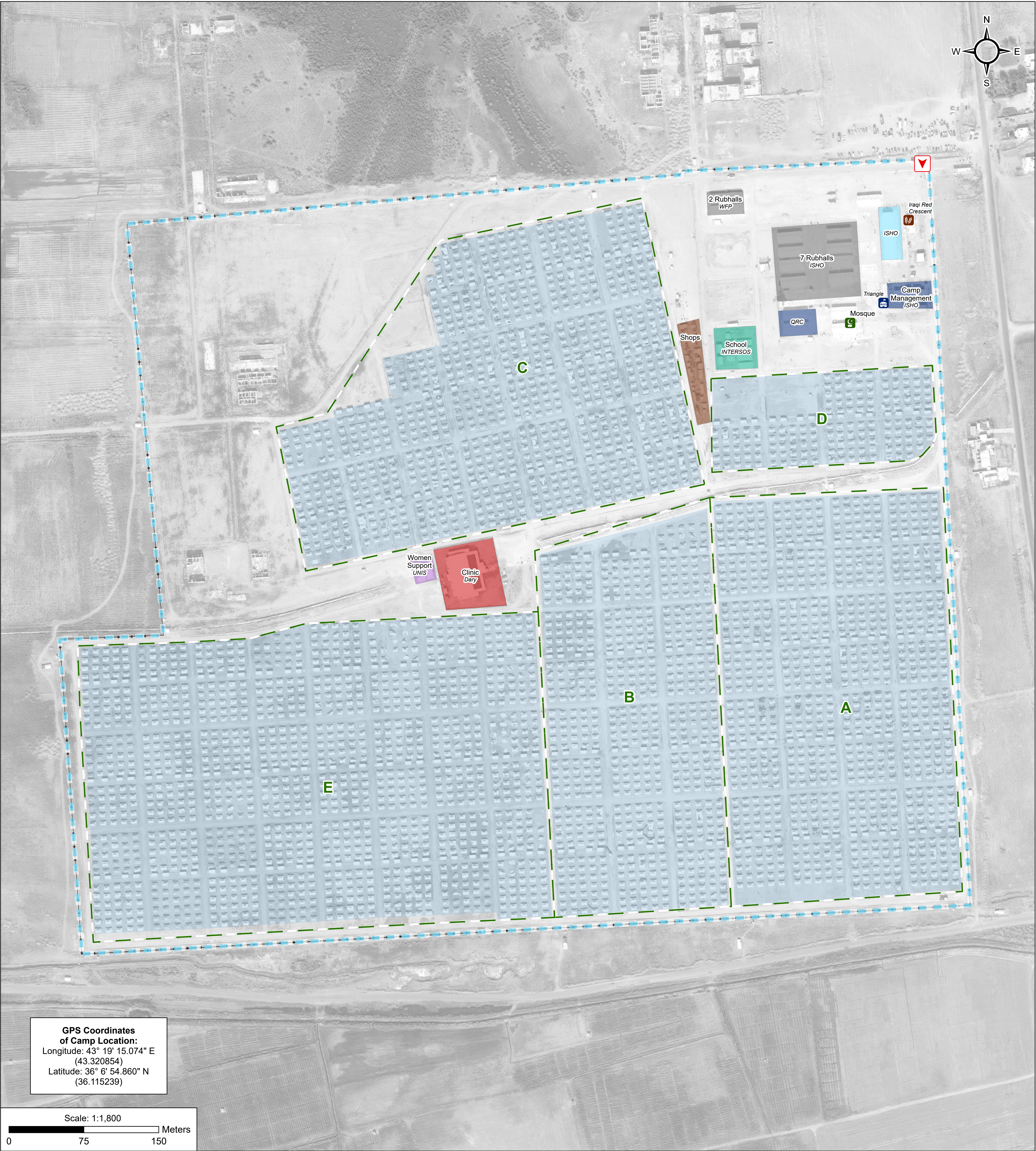


IRAQ - As Salamyiah Nimrud Camp

For Humanitarian Purposes Only
Production date: 19 August 2018

General Infrastructure - Updated 21 July 2018



Camp Infrastructure

- | | | | |
|--|----------------|--|------------|
| | Delineation | | Service |
| | Fence | | Storage |
| | Sector | | Entrance |
| | Block | | NGO Office |
| | Health | | Mosque |
| | Office | | Bakery |
| | Registration | | |
| | Education | | |
| | Community Area | | |

Data sources:
Camp Infrastructure: 21/07/2018, REACH Initiative

Satellite Imagery: WorldView-3 from 25/10/2017
Copyright: ©2017, DigitalGlobe, Inc
Source: US Department of State, Humanitarian Information Unit, NextView License

Coordinate System: WGS 1984 UTM Zone 38N
Projection: Transverse Mercator

File:
IRQ_MAP_IDP_AsSalamyiahNimrud_19Aug2018
Contact : iraq@reach-initiative.org

Note: Data, designations and boundaries contained on this map are not warranted to be error-free and do not imply acceptance by the REACH partners, associated, donors mentioned on this map.