

# IRAQ - Hamam Al Alil 1 Camp

## General Infrastructure - Updated 16 July 2019

### Camp Infrastructure

- Camp Delineation
- Fence
- Sector
- Block
- Health
- Office
- Distribution
- Education
- WASH Facility
- Service
- Storage
- Entrance
- Gate
- Community Centre

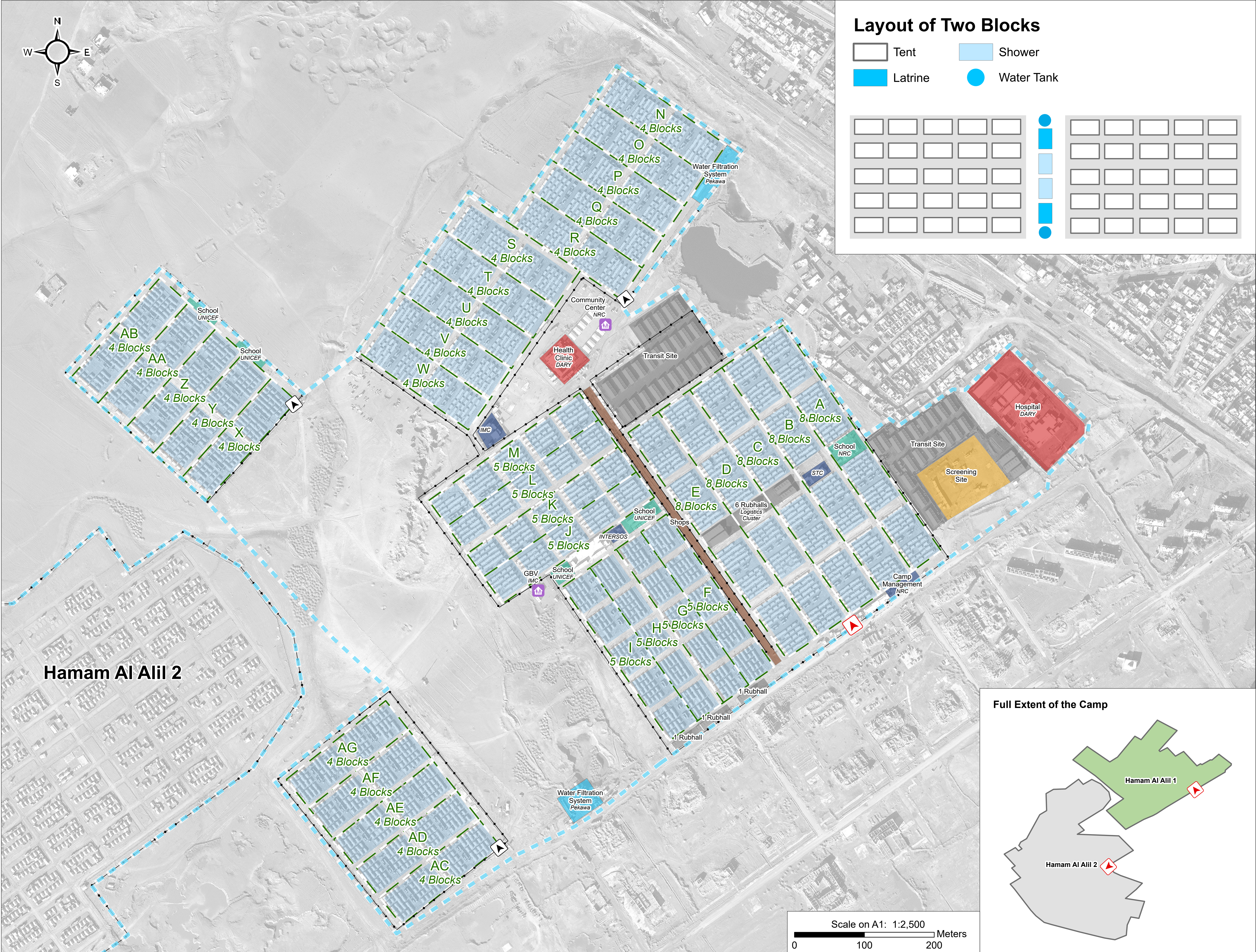
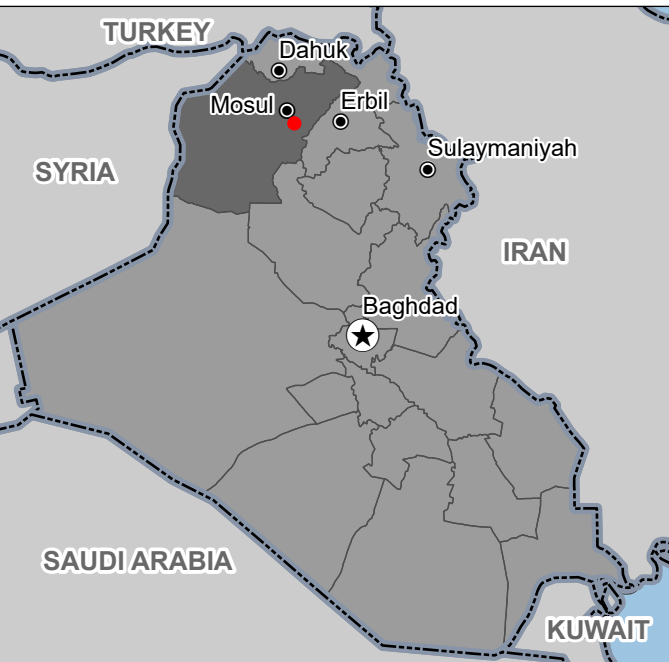
**GPS Coordinates of Camp Location:**  
Longitude: 43° 14' 49.094" E (43.2469705)  
Latitude: 36° 9' 43.322" N (36.1620339)

Thematic Data: 16/07/2019- REACH  
Administrative boundaries: GADM, OCHA

Satellite Imagery: WorldView-1 from 11/12/2018  
Copyright: ©2018, DigitalGlobe  
Source: US Department of State, Humanitarian Information Unit, NextView License

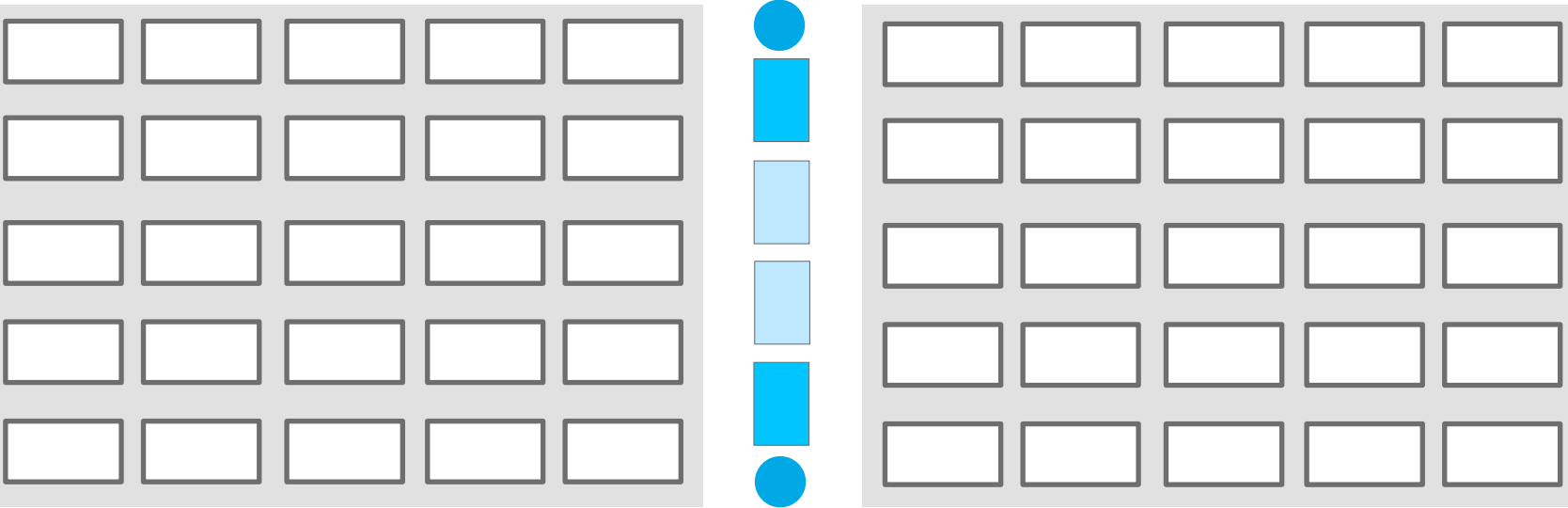
Projection: WGS 1984 UTM Zone 38N  
Contact : iraq@reach-initiative.org  
File: REACH\_IRQ\_Map\_IDP\_HamamAlil-1\_14Aug2019

Note: Data, designations and boundaries contained on this map are not warranted to be error-free and do not imply acceptance by the REACH partners, associates or donors mentioned on this map.



### Layout of Two Blocks

- Tent
- Shower
- Latrine
- Water Tank



### Hamam Al Alil 2

### Full Extent of the Camp

Scale on A1: 1:2,500  
0 100 200 Meters