



IDP Camp Profile - Debaga 2

Erbil, Iraq
August 2016

Management agency: BCF
Manager/Focal point: Sufian Baydar
Phone number: 7511720445
Email: n/a
Registration actor: BCF

Summary

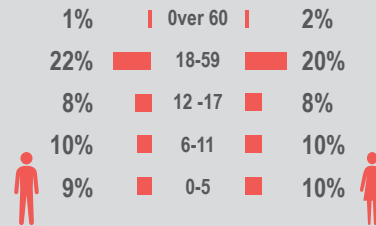
This profile provides an overview of conditions in Debaga 2 camp. Primary data was collected through household surveys on 23-08-16. This was the first round of data collection for this camp. Households were randomly sampled to a 95% confidence and 10% margin of error, based on population figures provided by CCCM. In some cases, additional information from camp managers has been used to support findings.

Camp Overview

of individuals: 3502
of households: 650
Date opened: 28-03-16
Occupied number: 688
Ongoing extension: No
Planned capacity: 688
Camp area: 435,404

Demographics

50% male / 50% female

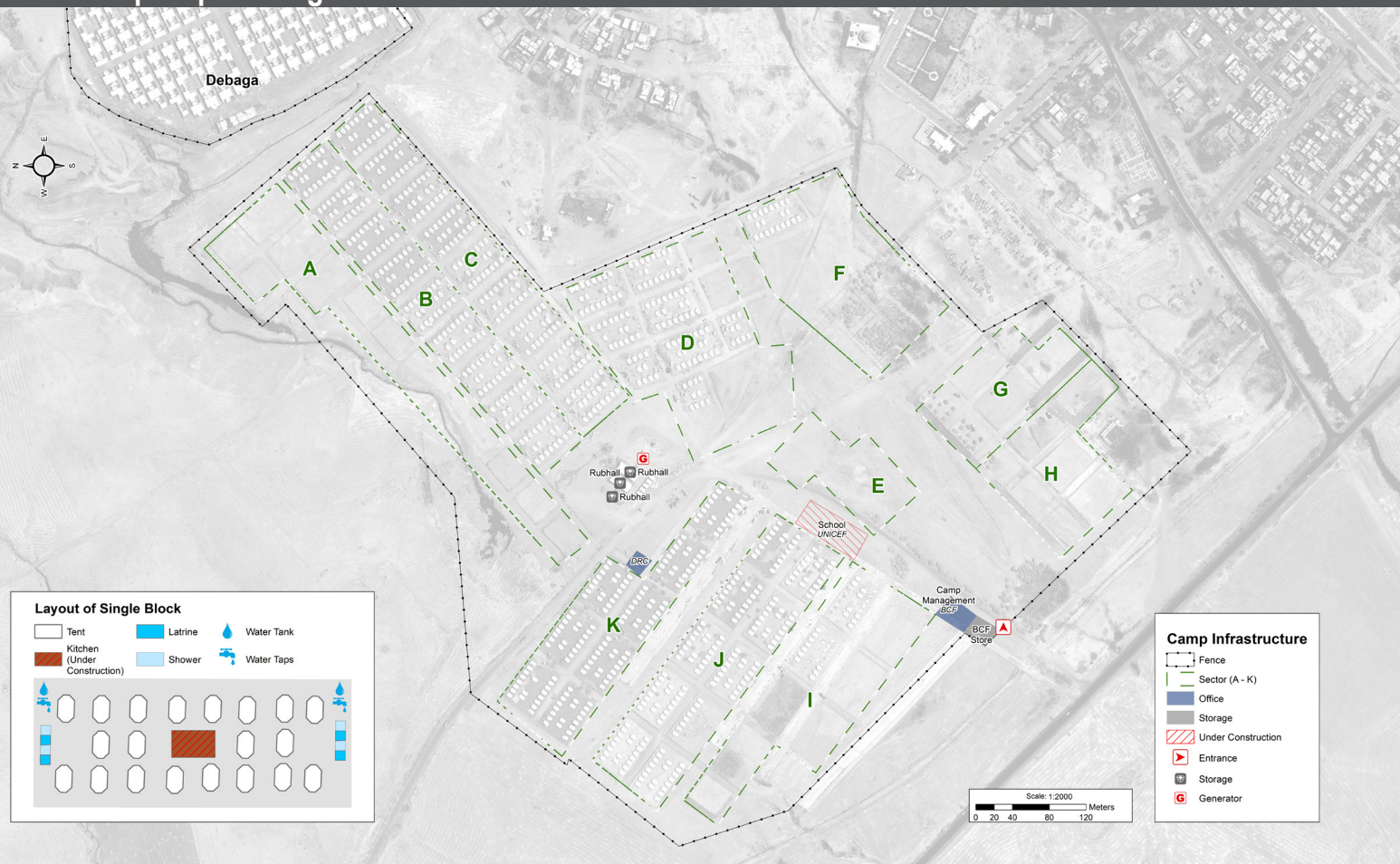


Location Map



IDP Camp Map - Debaga 2

Lat. 35° 52' 30.511" N Long. 43° 47' 59.513" E



Sectoral Minimum Standards

		Target	Previous Round	Current Round	Achievement
Education	% of children aged 6-11 attending formal school	100%	n/a	11%	●
	% of children aged 12-17 attending formal school	100%	n/a	5%	●
Food	% of households accessed Family Food Parcel or equivalent in the past month	100%	n/a	97%	●
Health	Health services are available on-site or within walking distance	Yes	n/a	Yes	●
CCCM	Average open area per household	min. 30m ²	n/a	321m ²	●
Protection	% of IDPs registered on an individual basis (MODM/DDM)	100%	n/a	88%	●
	% of households accessed shelter assistance since arrival at the camp	100%	n/a	98%	●
	Average covered area per person	min. 3.5m ²	n/a	3m ²	●
Shelter	Average number of individuals per shelter	max.5	n/a	n/a	●
	# of persons per latrine	max. 20	n/a	n/a	●
	# of persons per shower	max. 20	n/a	n/a	●
WASH	Frequency of solid waste disposal at least weekly	min. weekly	n/a	No	●

*GPS tracking of camp infrastructure was not possible this round due to restrictions from authorities. Area calculations subsequently could not be determined.
Targets based on minimum standards agreed with the CCCM Cluster, Iraq. Findings based on household-level data, enumerator field observations, and camp management documentation
● Minimum standard reached, ● More than 50% minimum standard reached, ● Less than 50% of minimum standard reached or not at all





IDP Camp Profile - Debaga 2

Erbil, Iraq
August 2016

Management agency: BCF
Manager/Focal point: Sufian Baydar
Phone number: 7511720445
Email: n/a
Registration actor: BCF

Shelter

Top three observed shelter types*

Permanent structure	100%	<div></div>
n/a	n/a	
n/a	n/a	

*Households were asked to select all shelter typologies within household.

Winterisation and NFI items

82%	reported a second fly sheet
0%	reported access to a heater
27%	reported at least one blanket per person
26%	reported at least one mattress per person
1.1	average number of carpets
0%	reported shelter provides warmth in winter

Hazards

1%	reported exposed electrical cables at site
----	--

Shelter Improvement

0%	reported making own improvements to their shelter
----	---

Community Organisation

IDP committees

87%	reported awareness of IDP committee(s)
-----	--

Complaints mechanism

54%	reported awareness of complaints mechanism
-----	--

Protection

Family Separation

0%	reported hosting unaccompanied or separated minors
3%	reported that other family members intended to join them

Vulnerable groups

Pregnant / lactating women	15%	<div></div>
Chronically ill individual(s)	6%	<div></div>
Disabled individual(s)	2%	<div></div>
Female headed households	11%	<div></div>

Intentions

0%	planned to move to a different location in next 3 months
----	--

Restrictions

2%	reported entry or exit restrictions during daylight hours
----	---

Food Security and Coping Strategies

Reported access to food assistance

97%	accessed food assistance in past month
36%	received Public Distribution System (PDS) in past month

Top three food consumption coping strategies

Cheaper	73%	<div></div>
Smaller meals	44%	<div></div>
Less meals	37%	<div></div>

Top three reported livelihood coping strategies

Spent savings	74%	<div></div>
Charitable Donations	43%	<div></div>
Selling Assets	31%	<div></div>

WASH

Latrines and showers

100%	reported public or communal latrines
100%	public/communal latrines lockable from the inside
0%	public/communal latrines with functioning lighting

Top three reported methods of waste removal

Collected	91%	<div></div>
Communal bin	9%	<div></div>
n/a	n/a	

Reported drinking water sources

0%	connection inside the home to collective water storage
0%	connection inside the home to private water storage
100%	communal water tap outside the shelter

Access to water

2%	reported 24 consecutive hours without access to water in the past month
----	---

Household Income

20%	reported as being economically inactive
-----	---

Top three income sources*:

Humanitarian Aid	71%	<div></div>
No livelihood	20%	<div></div>
Government Pension	10%	<div></div>

*Households were asked to select all income sources within household.

