

# Somalia - Galkacyo

## Kulmiye- Settlement Facilities ( April 2014 )

For humanitarian relief purpose only  
Production date : 28 May 2014

### School

- ECD
- Primary school
- Secondary school
- Adults

### Water points

- Burkad
- Protected Well-without Hand Pump
- Tank and Tap
- Unprotected Well
- Water Kiosk

### Types Of Latrines

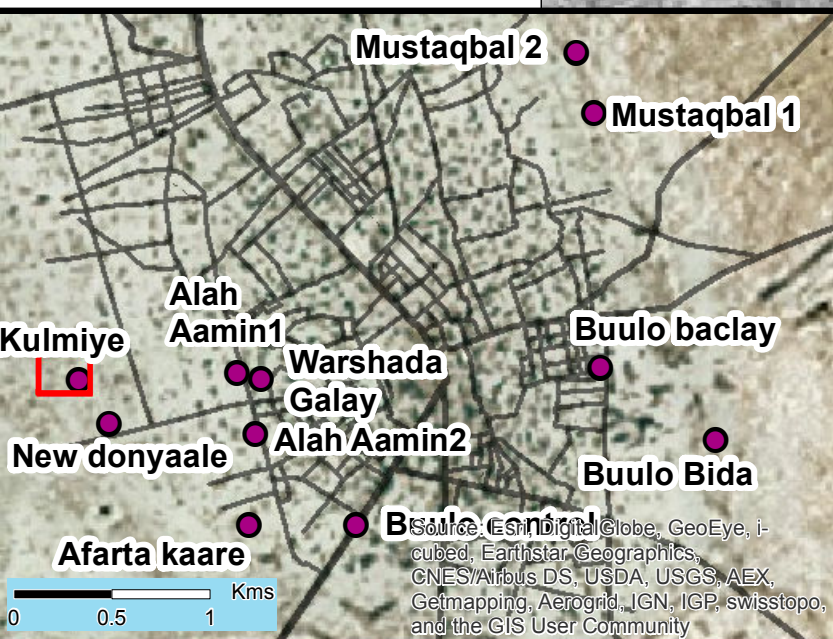
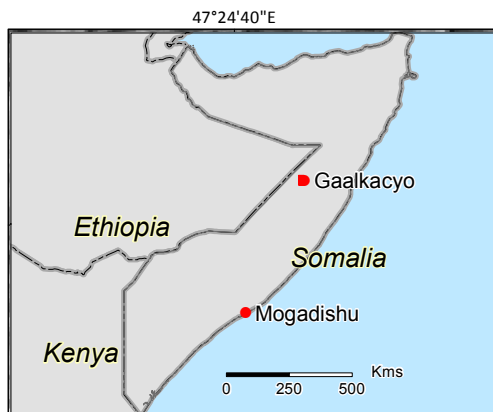
- Household latrine
- Communal latrine

### Facilities

- Community centre
- Garbage collection point
- Health Facility
- Kiosk
- Market
- Assessed IDP Settlement
- Shelter (UNOSAT analysis April 2014)

Data sources:  
Facilities and IDP sections: REACH assessment  
Shelter Points: UNOSAT  
Admin level: OCHA COD  
Imagery Date (1): 14 February 2014  
WorldView-1/DigitalGlobe  
Coordinate System: GCS WGS 1984  
Filer: SOM\_Galkayo\_IDP\_05may2014\_A3\_Kulmiye  
Contact : reach.mapping@impact-initiatives.org

### Funded by



Note: Data, designations and boundaries contained on this map are not warranted to error-free and do not imply acceptance by the REACH partners, associated, donors mentioned on this map. For Humanitarian purposes only.

6°46'10"N

6°46'5"N

An initiative of  
IMPACT Initiatives  
ACTED and UNOSAT

**REACH**