

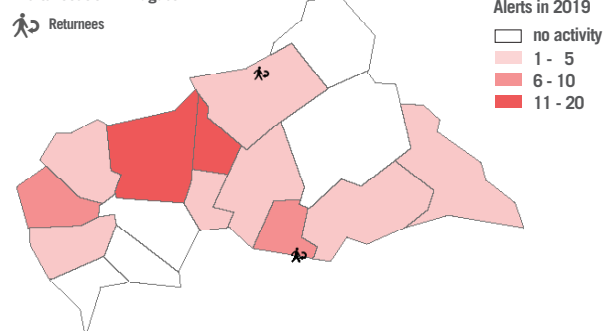


The Rapid Response Mechanism (RRM) is designed to monitor humanitarian action, conduct multisector assessments and to implement several emergency responses, as non-food items (NFI) and HEB¹ distributions, water, sanitation and hygiene (WASH) interventions, cash activities and fairs, when there is no capacity on site. Currently, RRM is made possible through the generous support of the European Union Civil Protection and Humanitarian Aid Office (ECHO), the Office of U.S. Foreign Disaster Assistance (OFDA), the Swedish International Development Cooperation Agency (SIDA) and the Swiss Agency for Development and Cooperation (SDC). All RRM products are available on the [Humanitarian Response](#) portal.

Alerts received or sent by the RRM in 2019

Alert distribution in August 2019 et in 2019 :

Alerts location in August :

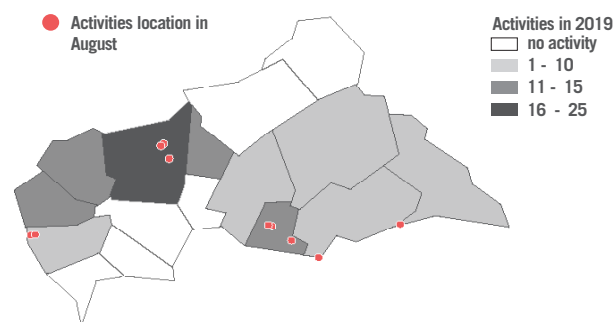


Median delays between alert and intervention³ : 36 jours.

Overview of RRM activities in 2019

Activity distribution in August and in 2019 :

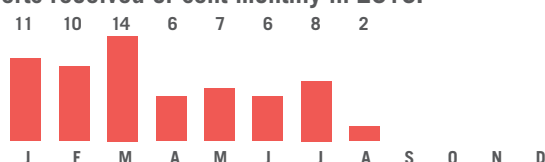
(MEX, MSA, rapid SMART, NFI and HEB distributions, WASH interventions, PDM²)



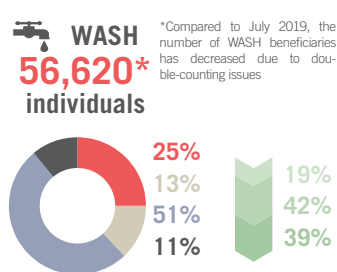
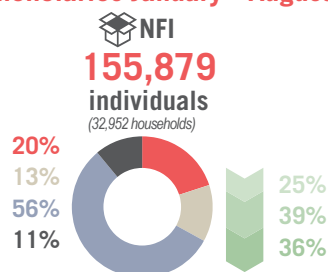
RRM activities in August 2019:



Alerts received or sent monthly in 2019:



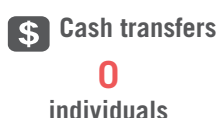
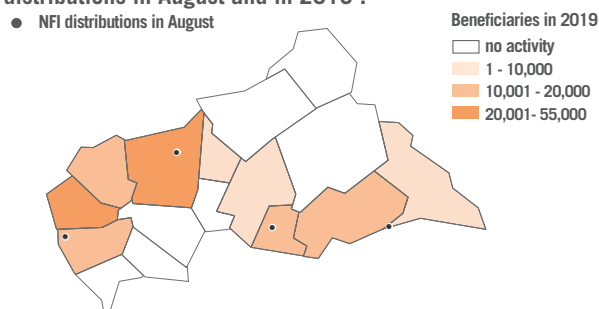
Beneficiaries January - August 2019



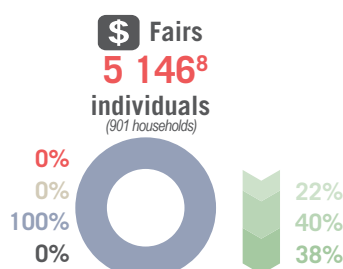
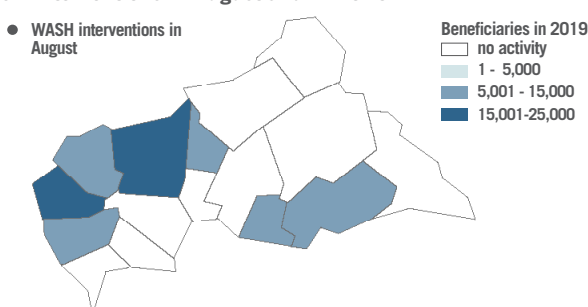
*Compared to July 2019, the number of WASH beneficiaries has decreased due to double-counting issues

Distribution of beneficiaries

NFI distributions in August and in 2019 :



WASH interventions in August and in 2019:



Legend :

- Displaced
- Host community⁵
- Returnees⁶
- Repatriated⁷
- Men (5 years old and more)
- Women (5 years old and more)
- Children under 5 years old

Activities January - August 2019

Ongoing activities are not taken into account.

MEX (exploratory mission)	19	Cash transfer	0
MSA (multisectoral assessment)	36	Hygiene sessions	127
MSA-R ⁴	0	Emergency latrines	123
NFI distributions	35	Rehabilitations of water sources	49
WASH interventions	18	Post-distribution monitoring (PDM)	8
HEB distribution	1	Distributed Menstrual Hygiene Kits	10,294
Fairs	2	Rapid SMART (nutrition screening)	4

¹High Energy Biscuit (HEB). ²Post-Distribution Monitoring. ³Based on the first intervention (NFI, WASH, HEB or cash transfers), for any alert raised in 2019. ⁴MSA-R are not triggered following a RRM alert. MSA-R aim at gathering information on areas not recently affected and/or not recently accessed by humanitarian actors. ⁵The term 'host community' refers to individuals that have not been displaced as the result of a humanitarian-related event. ⁶The term 'returnees' refers to people who have come back to their pre-crisis location following a period of internal displacement. ⁷The term 'repatriated' refers to former refugees who have returned from neighbouring countries. ⁸After verification and correction, the number of beneficiaries of the fair in Kella-Doukou (June) is 1493 (and not 1212). Thus, the total number of beneficiaries of the two fairs in May (Gribingui) and in June is 5146 individuals (and not 4865).