



Summary

This profile provides an overview of water, sanitation and hygiene (WASH) infrastructure within Zone AA in Ukhiya, Cox's Bazar. Primary data represents infrastructure present as of 9 November 2017.¹ Findings should be considered indicative only.

Site Information

# of individuals:	7072
# of shelters:	473
# of individuals per shelter:	15
# of households:	1414

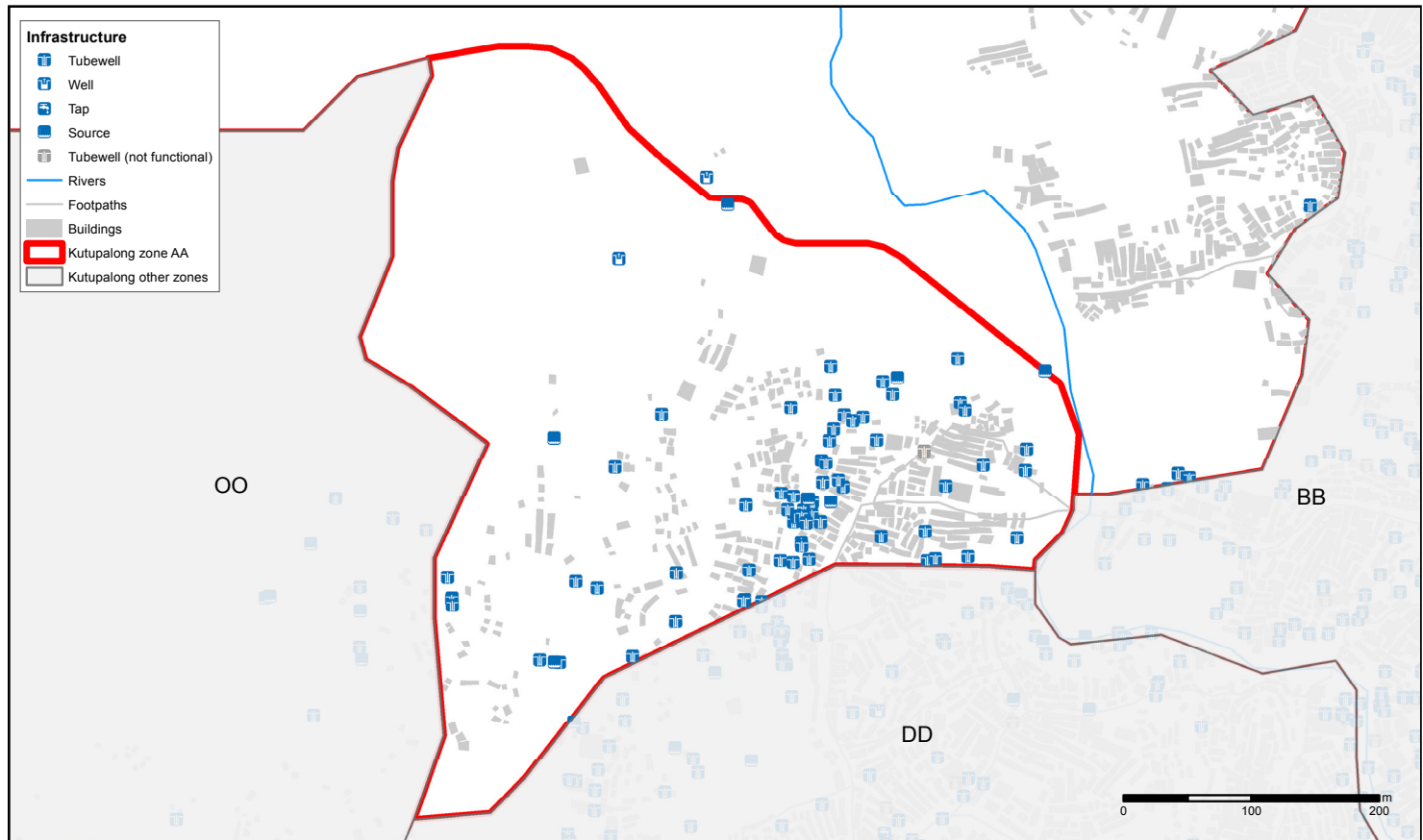
Key WASH Infrastructure

# of latrines	371 (91%)
(% functional):	
% of safe latrines ² :	89%
# of handpumps	50 (76%)
(% functional):	
# of washrooms:	159

Location Map



Access to Water



Three most commonly identified types of water points, by functionality



Key sectoral achievements

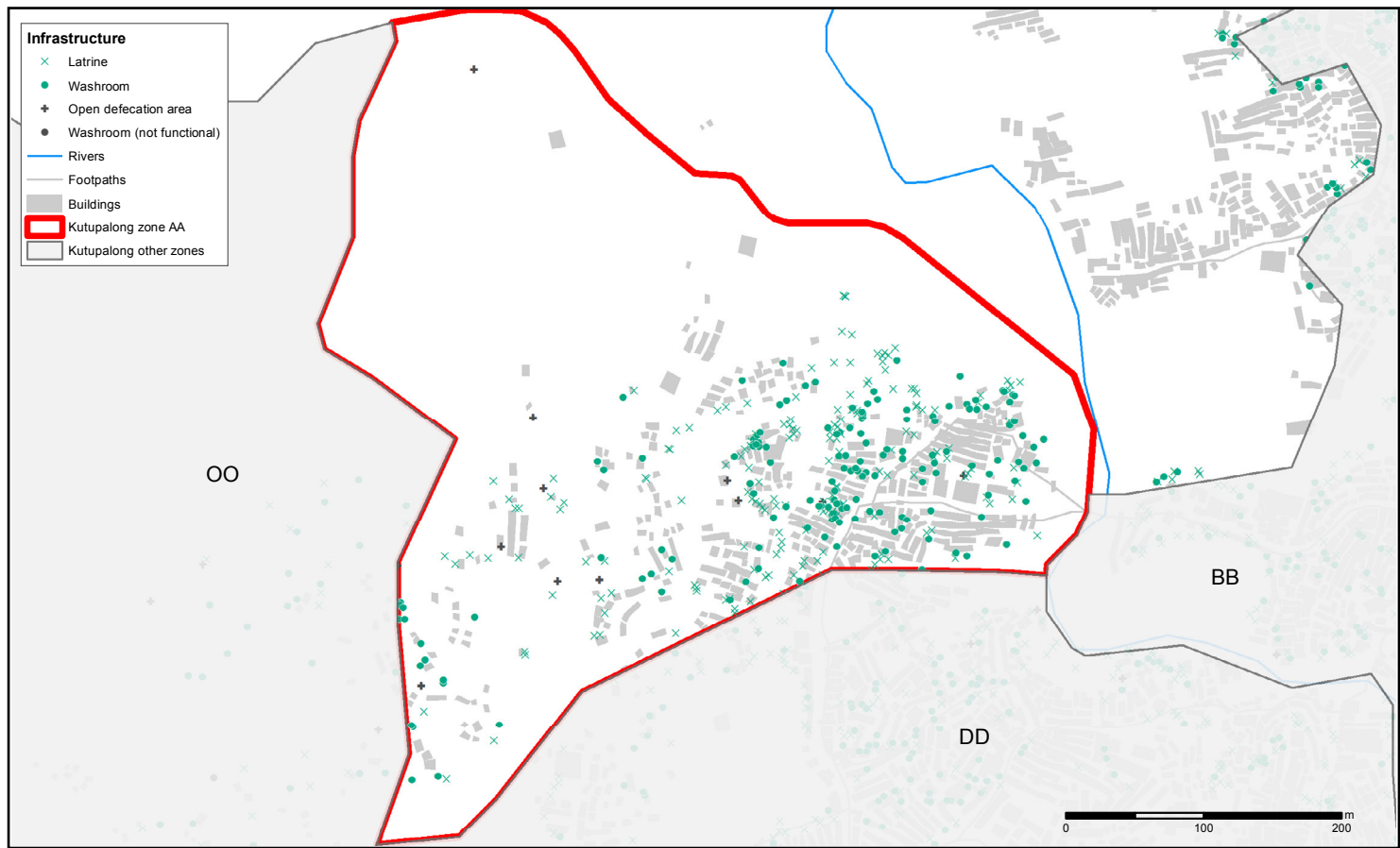
Targets based on WASH Sector Standards/Indicators for the Rohingya response, Sphere Minimum Standards/Indicators as well as Department of Public Health and Environment (DPHE) Minimum Standards/Indicators ● Minimum standard/indicator reached, ● 75%-99% minimum standard/indicator reached, ● 50-74% minimum standard/indicator reached, ● Less than 50% of minimum standard/indicator reached

	Target	Previous Round	Current Round	Achievement
# of people per functioning hand pump	max. 500 ³	1414	141	●
% of shelters within 200 metres of a functioning hand pump ⁴	100%	100%	100%	●

¹ Primary data for this round was collected between 20 October and 9 November 2017. REACH enumerators conducted a full sweep of all sites and camps (as per boundaries defined by ISCG) and used an Open Data Kit (ODK) form to log all key infrastructure observed during this sweep, with further details to be logged for WASH infrastructure. ² Safe refers to fully covered latrines (i.e. a latrine with four walls, a roof and a door). ³ This target is based on standards for the long term (6 months+), for the immediate and medium phase (0-6 months) it is 500. ⁴ The distance is based on standards for the long term (6 months+), for the immediate phase (0-3 months) it is 750 metres and for the medium phase (3-6 months) 500 metres.

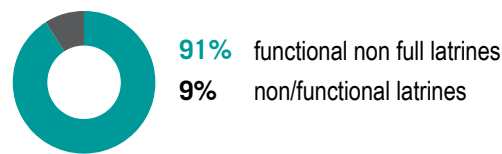


Sanitation

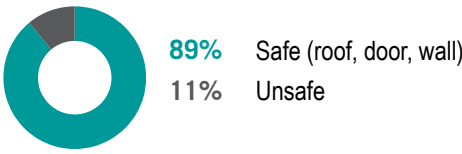


Latrine characteristics

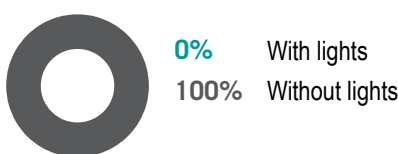
% of functional/ non-functional latrines



% of safe/ unsafe latrines:



% of latrines with/ without lights



Key sectoral achievements

Targets based on WASH Sector Standards/Indicators for Rohingya response, Sphere Minimum Standards/Indicators as well as DPHE Minimum Standards/ Indicators ● Minimum standard/indicator reached, ● 75%-99% minimum standard/indicator reached, ● 50-74% minimum standard/indicator reached, ● Less than 50% of minimum standard/indicator reached

	Target	Previous Round	Current Round	Achievement
# of people per functional (non-full) latrine	max. 50 ⁴	147	21	●
# of people per safe latrine	N/A	164	62	N/A
% of shelters within 50 meters to a functional (non-full) latrine	100%	100%	97%	●
% of latrines that are at least 10 meters away from a water point	100%	66%	72%	●

⁴ This target is based on standards for the long term (6 months +), for the immediate phase (0-3 months) it is 100 and for the medium phase (3-6 months) 75.