



Cross-Border Population Movement

Akobo Port and Road Monitoring

Akobo County, Jonglei State, South Sudan

South Sudan Displacement Crisis

November 2021

CONTEXT AND METHODOLOGY

Akobo town is located in the eastern side of Akobo County, Jonglei State, close to the land and river border crossings with Ethiopia. Akobo is a key point of trade and transit between South Sudan and Ethiopia. Since the beginning of the crisis in 2013, this route has been used by South Sudanese heading to or coming back from refugee camps in Ethiopia. Since May 2015, REACH has been recording arrivals and departures of South Sudanese households (HHs) in four locations, Gadrang Road, Koatkoangthor Road, Tundol Port and Market Port, on a daily basis.

In order to provide an indication of wider trends, data is collected on the volume of movement, as well as the motivations and intentions of those travelling. REACH teams interviewed arrivals and departures at the household (HH) level. For movements larger than three households, a short alternative survey is used to assess HH and individual numbers by speaking to the Transport Focal Point (TFP), such as the driver or transport authority.¹ Due to insecurity and other issues, data is not always collected on a daily basis. To correct for this inconsistency, data presented for general movement trends across months represents an average based on the number of days of data collection each month. **The data presented here is not representative, nor does it capture all movements in and out of Akobo. Rather, it is indicative of movement trends for the assessed population.**² The following findings are based on primary data collected between the 1st and 30th November 2021.

GENERAL MOVEMENT TRENDS

The findings in this factsheet are based on data from the REACH Port and Road Monitoring (PRM) data collection and the TFP survey, the latter of which captures larger movements between Akobo and Ethiopia.¹

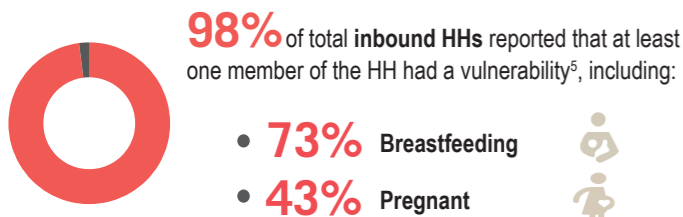
Type of movement

Total monthly number of HHs and individuals recorded in November 2021:

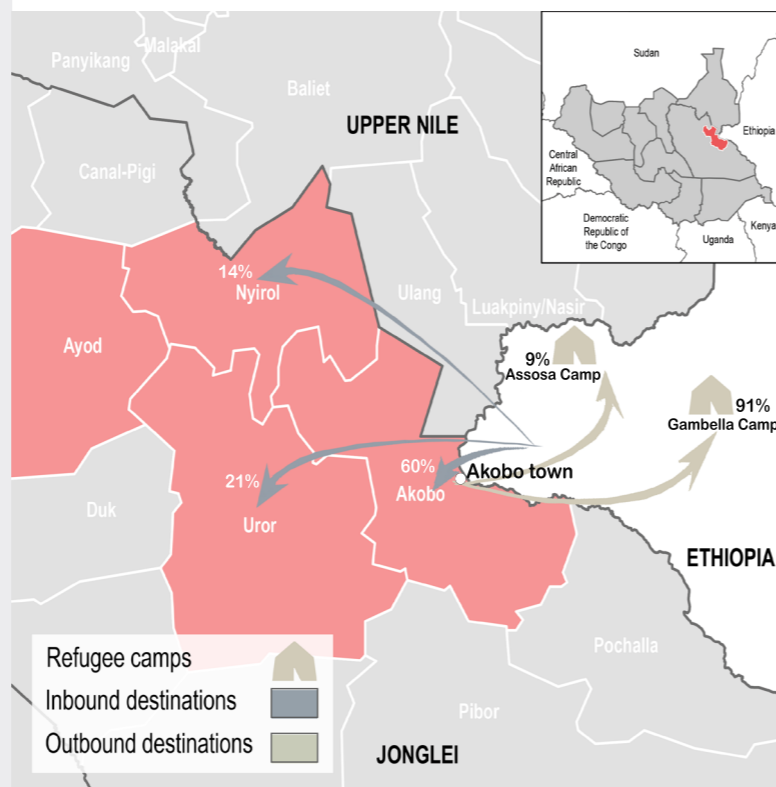
	HHs	Individuals	% of HHs
Inbound to South Sudan from Ethiopia	82	563	47%
Outbound to Ethiopia from South Sudan	75	384	43%
Internal movement within South Sudan	18	79	10%

During the data collection period, in addition to interviewing 150 HHs (885 individuals) travelling by foot or in small vehicles and boats (PRM data collection), REACH also used the TFP tool to estimate the number of HHs travelling on larger boats. In November, two outbound transports were recorded to be carrying an estimated total of 6 HHs (32 individuals).

Vulnerabilities



MAIN DESTINATIONS OF INBOUND AND OUTBOUND



INBOUND TO SOUTH SUDAN

63% of inbound HHs that reported intending to **stay more than six months** in their final destination in South Sudan.

Demographics

Proportion of recorded travellers by demographic group:



63% of inbound HHs were partial HHs.⁴

Previous location in Ethiopia

Primary reported locations from which inbound HHs were leaving:

Gambella Camp	71%
Assosa Camp	26%

Intended destination in South Sudan

Primary reported intended destinations for inbound HHs:

Akobo County	60%
Uror County	21%
Nyirol County	14%

Push factors

Primary reported push factors for inbound HHs to leave their last location⁶:

Distance from family/home	44%
Lack of food	41%
Frictions/community tensions	8%

Reasons for coming to South Sudan

Primary reported pull factors for inbound HHs, August 2021 to November 2021:

	August 2021	September 2021	October 2021	November 2021
Rejoining family/ home	60%	57%	57%	43%
Presence of work opportunities	12%	17%	29%	3%
Attending a ceremony	16%	14%	11%	0%

OUTBOUND FROM SOUTH SUDAN

52% of outbound HHs that reported intending to **stay more than six months** in their final destination outside of South Sudan.

Demographics

Proportion of recorded travellers by demographic group:



81% of outbound HHs were partial HHs.⁴

Previous location in South Sudan

Primary reported locations from which outbound HHs were leaving:

Akobo County	74%
Nyirol County	13%
Uror County	7%

Intended destination in Ethiopia

Primary reported intended destinations for outbound HHs:

Gambella Camp	91%
Assosa Camp	9%

Pull factors

Primary reported pull factors for outbound HHs to go to another country⁶:

Presence of education services	36%
Perceived availability of food	22%
Proximity to family/home	16%

Reasons for leaving South Sudan

Primary reported push factors for outbound HHs, August 2021 to November 2021:

	August 2021	September 2021	October 2021	November 2021
Lack of education services	13%	37%	66%	36%
Lack of health services	24%	21%	13%	14%
Lack of food	19%	18%	10%	22%

Notes:
1. The TFP tool asks the driver (or another focal point) to give details of the number of individuals and number of households travelling. This methodology is used if the number of households travelling exceeds 3 households and therefore cannot all be interviewed. For more details, please access the Port and Road Monitoring Terms of Reference here.
2. While internal movement within South Sudan was also recorded in Akobo over the data collection period, this factsheet covers crossborder movement between South Sudan and Ethiopia, and vice versa, only.
3. Outbound transport focal points were asked what security concerns they anticipated on their onward journey based on historical trips.
4. Respondents may select multiple vulnerabilities.
5. Partial HHs are those where not all members of the self-identified family unit were reportedly travelling. Please note, family units in South Sudan often extend beyond the nuclear family.
6. Reported presence of services or opportunities is indicative of respondents' perceptions and does not necessarily reflect availability.