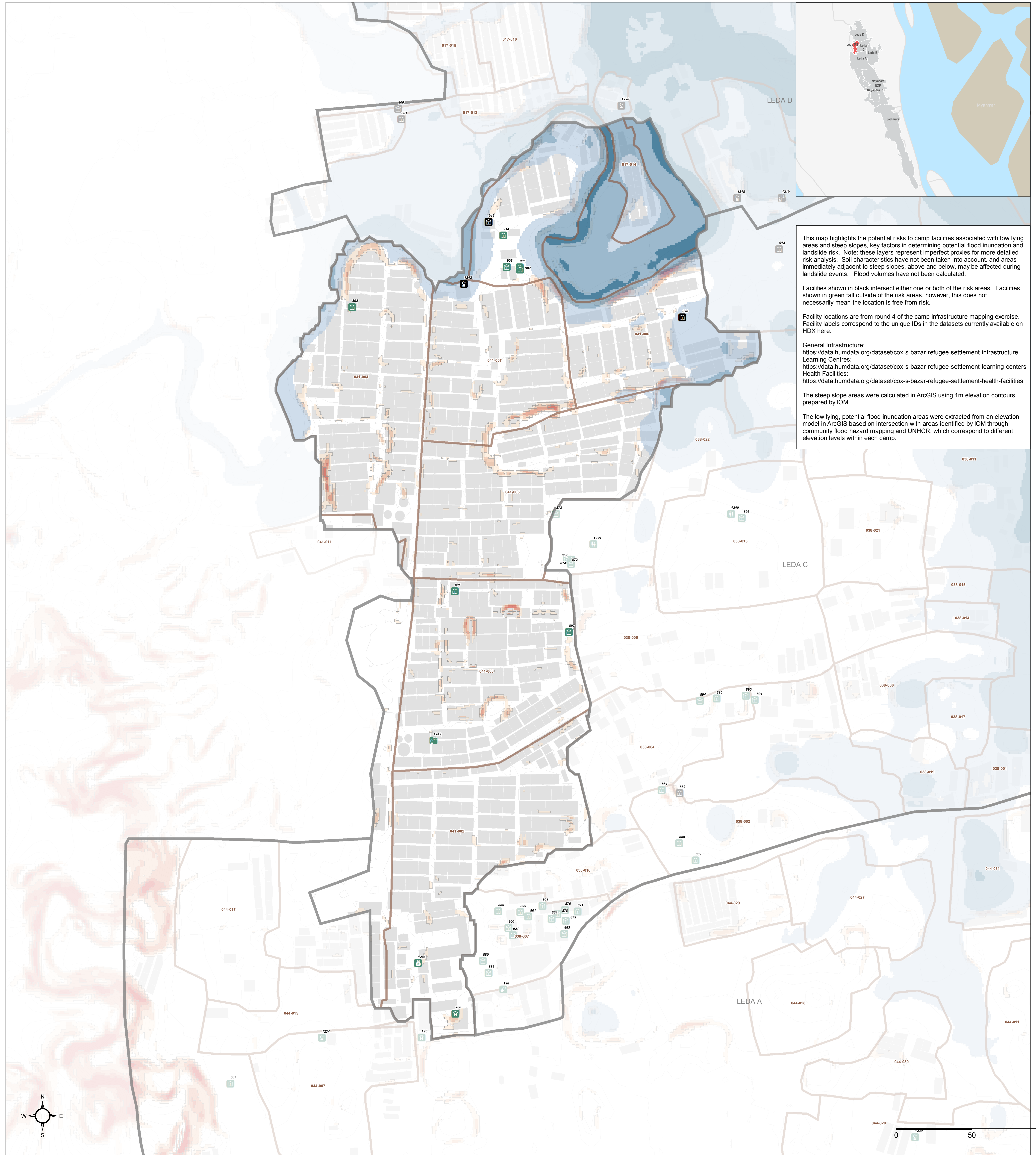


BANGLADESH - Rohingya Refugee Crisis - Cox's Bazar District

Leda MS - Potential Flood Inundation and Slope Risk

For Humanitarian Purposes Only
Production date: 6 April 2018



This map highlights the potential risks to camp facilities associated with low lying areas and steep slopes, key factors in determining potential flood inundation and landslide risk. Note: these layers represent imperfect proxies for more detailed risk analysis. Soil characteristics have not been taken into account, and areas immediately adjacent to steep slopes, above and below, may be affected during landslide events. Flood volumes have not been calculated.

Facilities shown in black intersect either one or both of the risk areas. Facilities shown in green fall outside of the risk areas, however, this does not necessarily mean the location is free from risk.

Facility locations are from round 4 of the camp infrastructure mapping exercise. Facility labels correspond to the unique IDs in the datasets currently available on HDX here:

General Infrastructure:
<https://data.humdata.org/dataset/cox-s-bazar-refugee-settlement-infrastructure>
Learning Centres:
<https://data.humdata.org/dataset/cox-s-bazar-refugee-settlement-learning-centers>
Health Facilities:
<https://data.humdata.org/dataset/cox-s-bazar-refugee-settlement-health-facilities>

The steep slope areas were calculated in ArcGIS using 1m elevation contours prepared by IOM.

The low lying, potential flood inundation areas were extracted from an elevation model in ArcGIS based on intersection with areas identified by IOM through community flood hazard mapping and UNHCR, which correspond to different elevation levels within each camp.



- Facilities Not Within Hazard Areas**
- Child Friendly Space
 - Women Friendly Space
 - Community Centre
 - Info Hub
 - Distribution Center
 - Field Office
 - Mosque
 - Madrasah
 - Learning Centre
 - Health Centre
 - Clinic
 - Treatment Centre (Diarrhea/Diphtheria)
 - Health Post (fixed)
 - Health Post (mobile)
 - Diagnostic Point
 - Labour Room

- Facilities Within Hazard Areas**
- Child Friendly Space
 - Women Friendly Space
 - Community Centre
 - Info Hub
 - Distribution Center
 - Field Office
 - Mosque
 - Madrasah
 - Learning Centre
 - Health Centre
 - Clinic
 - Treatment Centre
 - Health Post (fixed)
 - Health Post (mobile)
 - Diagnostic Point
 - Labour Room

- Steep Slope Areas**
- > 40 degrees
 - 35 - 40 degrees
 - 30 - 35 degrees
 - 25 - 30 degrees
 - 20 - 25 degrees
- Elevation Contours (1m)
- Shelter Footprints
- Majhee Blocks
- Camp Boundaries
- Highway
- Military Road / Vehicle Road
- Main Path
- Footpath

- Low Lying Areas**
- Potential Inundation to 8m
 - Potential Inundation to 10m
 - Potential Inundation to 12m

Data Sources:
Camp Facilities - REACH / Health Sector
Steep Slopes - REACH
Low Lying Areas - REACH
Community Flood Hazard - IOM / UNHCR
Elevation Contours - IOM
Shelter Footprints - REACH / UNOSAT
Roads / Footpaths - ISCG / REACH
Camp / Majhee / Admin Boundaries - ISCG / IOM / OCHA

Coordinate System: WGS 1984 UTM Zone 46N
Projection: Transverse Mercator
Contact: reach.mapping@impact-initiatives.org

Note: Data, designations and boundaries contained on this map are not warranted to be error-free and do not imply acceptance by the REACH partners, associates, donors mentioned on this map.

In support of the

WASH Sector
Cox's Bazar

Funded by

unicef

In partnership with

UNOSAT