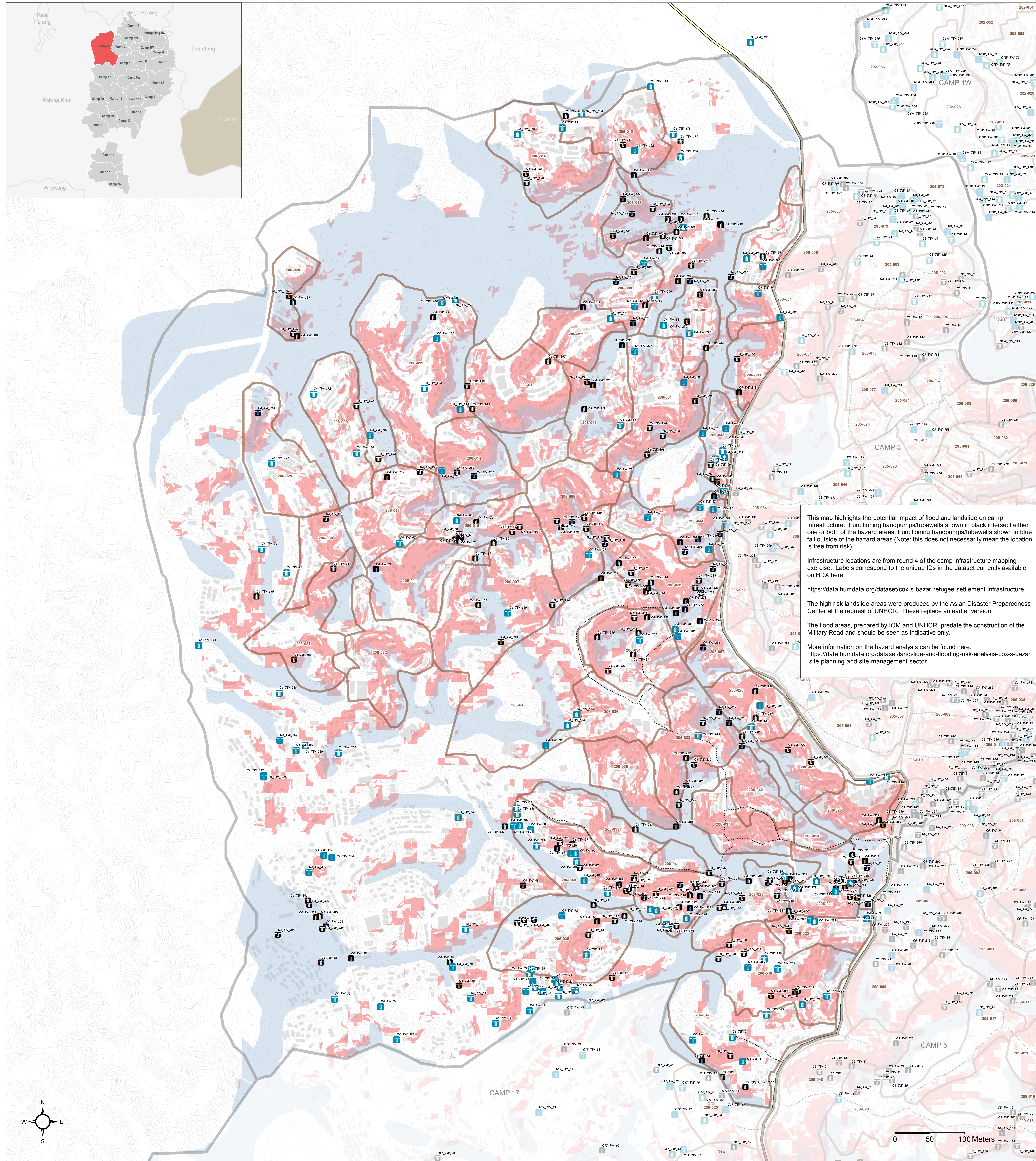


# BANGLADESH - Rohingya Refugee Crisis - Cox's Bazar District

## Camp 4 - Potential Risk to Handpumps and Tubewells

For Humanitarian Purposes Only  
Production date: 19 March 2018



- Handpumps / Tubewells**
- Functioning Handpump / Tubewell Not Within Hazard Area
  - Functioning Handpump / Tubewell Within Hazard Area
- High Risk Landslide Areas**
- Unstable / Critical Unstable
  - Nearly Unstable / Relatively Unstable
  - Flood Area
  - Elevation Contours (1m)
- Other Features**
- Camp Boundaries
  - Majhee Blocks
  - Shelter Footprints
  - Highway
  - Military Road / Vehicle Road
  - Main Path
  - Footpath

**Data Sources:**  
Camp Infrastructure - REACH  
Landslide Risk - ADPC / UNHCR  
Flood Areas - ADPC / UNHCR / IOM  
Elevation Contours - IOM  
Shelter Footprints - REACH / UNOSAT  
Roads / Footpaths - ISCG / REACH  
Camp / Majhee / Admin Boundaries - ISCG / IOM / OCHA

Coordinate System: WGS 1984 UTM Zone 46N  
Projection: Transverse Mercator  
Contact: [reach.mapping@impact-initiatives.org](mailto:reach.mapping@impact-initiatives.org)

Note: Data, designations and boundaries contained on this map are not warranted to be error-free and do not imply acceptance by the REACH partners, associates, donors mentioned on this map.

In support of the

WASH Sector  
Cox's Bazar

Funded by

unicef

In partnership with

UNOSAT  
United Nations Satellite Centre