

NORTHWEST SYRIA MARKET MONITORING EXERCISE

Snapshot: 4-11 January 2021

INTRODUCTION

To inform humanitarian cash programming, REACH, in partnership with the Cash Working Group (CWG), conducts monthly Market Monitoring Exercises in northern Syria to assess the availability and prices of 36 basic commodities that are typically sold in markets and consumed by average Syrian households, including food and non-food items, water, fuel, and cellphone data.

Of these, 18 items comprise the Survival Minimum Expenditure Basket (SMEB; see below), which represents the minimum, culturally adjusted items required to support a 6-person household for a month.

Data collection took place between 4-11 January 2021 and was conducted by Care, Shafak, GOAL, People In Need, REACH, Syrian Association for Relief and Development (SARD), Solidarités International and Violet.

The accompanying data is disseminated monthly and is distributed through partners across the humanitarian community. See REACH Resource Centre for the [January 2021 data](#).

SURVIVAL MINIMUM EXPENDITURE BASKET (SMEB) CONTENTS

	Item	Quantity	
Food Items	Bread	37 kg	
	Bulgur	15 kg	
	Chicken	6 kg	
	Eggs	6 kg	
	Fresh vegetables	12 kg	
	Ghee/vegetable oil	7 kg/L	
	Red lentils	15 kg	
	Rice	19 kg	
	Salt	1 kg	
	Sugar	5 kg	
	Tomato paste	6 kg	
	Hygiene items	Bathing soap	12 bars
		Laundry/dish soap	3 kg
		Sanitary pads	4 packs of 10
Toothpaste		200 g	
Fuel	Cooking fuel*	25 L	
Water	Water trucking	4500 L	
Telecom	Smartphone data	1 GB	
Other	Float (other costs)**	7.5% total value	

* Kerosene in northern Syria

** Float only applied to observations where prices of all SMEB contents could be collected

KEY DEVELOPMENTS

Coverage and data collection dates

In January 2021, REACH and partners covered 33 sub-districts and 2,639 individual shops in northwest Syria (NWS) for the Market Monitoring Exercise. In light of the fluctuation of the Syrian Pound (SYP)'s value and resulting market disruption, prices in the Market Monitoring dataset and output should be seen as representative only of the markets and dates where and when information was collected (4-11th January).

Highest northwest SMEB SYP cost recorded; SMEB USD cost slightly increased

In January, the value of the regional Survival Minimum Expenditure Basket (SMEB) reached 322,441 SYP, a 14% increase compared to December and 44% long-term

increase since July 2020, setting a new record for the highest ever recorded price in the Market Monitoring Exercise in NWS. The SMEB in United States Dollar (USD) increased from 105 USD in December to 113 USD in January alongside a depreciation of the SYP against the USD (see next paragraph).

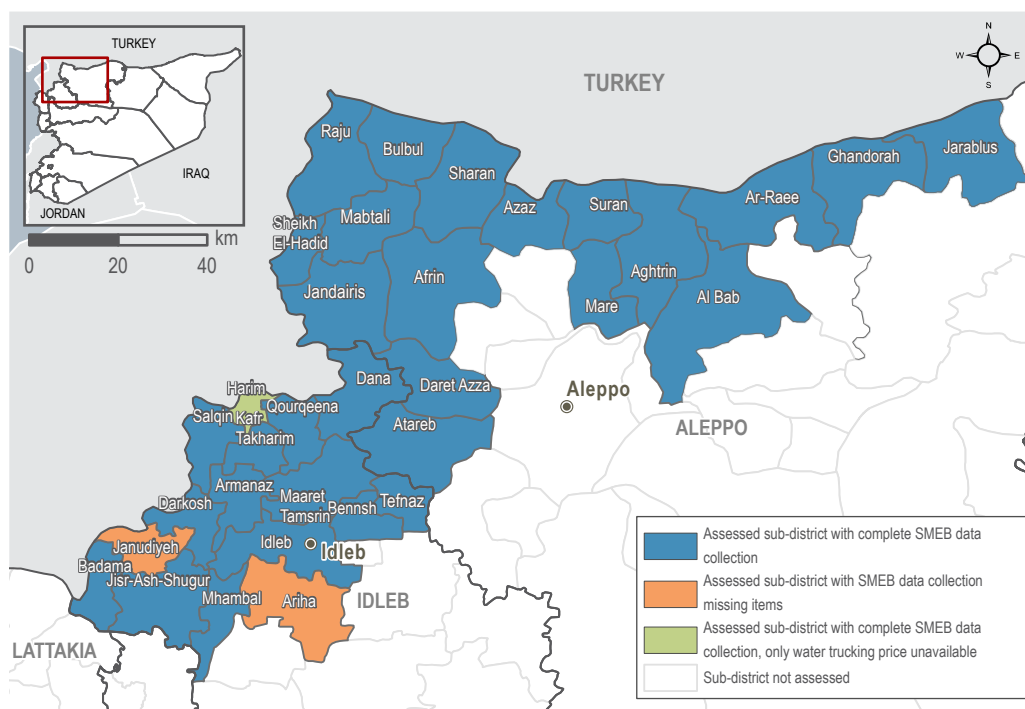
Depreciation of the SYP against the USD

In January, the informal USD/SYP regional median exchange rate increased by 5% since December and reached a regional median of 2,840 USD/SYP. The six-month change, a 22% increase since July 2020, highlights that the value of the SYP remains an unstable currency against the USD. The highest exchange rate was recorded at 2,900 SYP to 1 USD in Afrin community in Aleppo governorate.

Fuel prices further increased

Overall prices for transport fuels increased by 9% between December and January, with a median price of 1,683 SYP per litre. Less expensive, manually refined fuels, including petrol and kerosene remained largely unavailable in NWS due to inaccessibility of raw material inputs and low levels of import for fuels refined in northeast Syria (NES). For example, 80% of surveyed fuel vendors reported that manually refined petrol was not available in their market at the time of data collection. With the significant unavailability of lower quality but less expensive fuels, prices for high quality diesel and petrol (largely European fuels imported via Turkey) continued increasing in January, driven both by increasing demand as well as by fluctuating exchange rates of both the SYP and the TRY against the USD.

ASSESSED AREAS AND COVERAGE

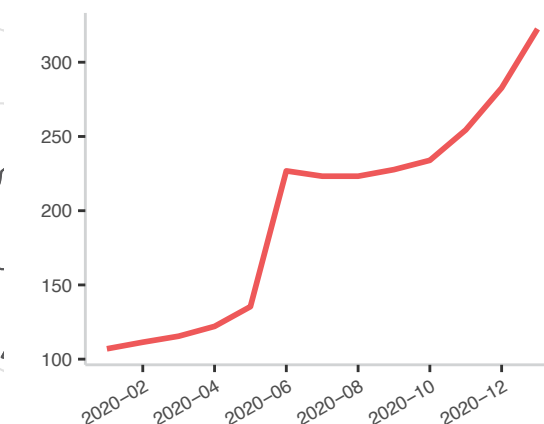


MEDIAN SMEB COST IN SYP (USD), BY REGION

322,441 SYP (113 USD) | NORTHWEST SYRIA - IDLEB, WESTERN & NORTHERN ALEPPO GOVERNORATES

MEDIAN SMEB COSTS, BY MONTH

Thousand Syrian Pounds



KEY DEVELOPMENTS

322,441 SYP (113 USD) **NORTHWEST SYRIA - IDLEB, WESTERN & NORTHERN ALEPPO GOVERNORATES**

Continued increase of food item prices

The cost of the regional SMEB food component reached 226,381 SYP in January, a 15% increase since December and an 51% increase since July 2020. The fresh food/vegetable component of the SMEB decreased by 2% in price overall, mainly as a result of an abundance of supply of tomatoes whose price decreased by 17% since December, as they are produced locally in the winter. However, the price of potatoes increased by 9%, cucumber increased by 20% and green peas increased by 6%, contributing to a price increase of 220% for the fresh vegetable component since July 2020. According to REACH field teams, this trend is primarily a result of decreased availability of locally grown warm weather produce and increased reliance on more expensive, imported produce, as well as due to increasing transport fuel prices and the [further depreciation of the SYP](#).

Bulk food prices also increased by 12% overall since December, again due to the higher cost of imported items, rising fuel costs, and unstable exchange rates against the USD. The price of bread (bag of 8 pieces) also increased by 11% since December, reaching a regional median of 775 SYP. Increasing bread prices are primarily due to a similar rise in the price of flour (16% increase since December), a product which is in short local supply in the region and for which import prices are dependent on fluctuating exchange rates. Additionally, increased prices were also recorded

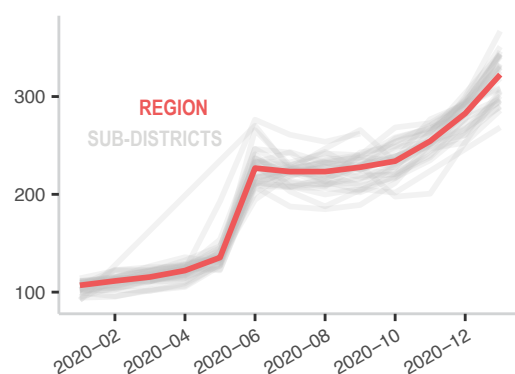
for other SMEB food items such as chicken, the price of which increased by 55% between December and January due to a combination of factors including SYP depreciation, increasing prices of imported feed for poultry, the limited availability of locally raised chicken, and the high costs of basic heating materials for chickens in the winter period. For similar reasons, eggs also increased by 8% in price.

Rising cost of cooking oils and cooking fuels

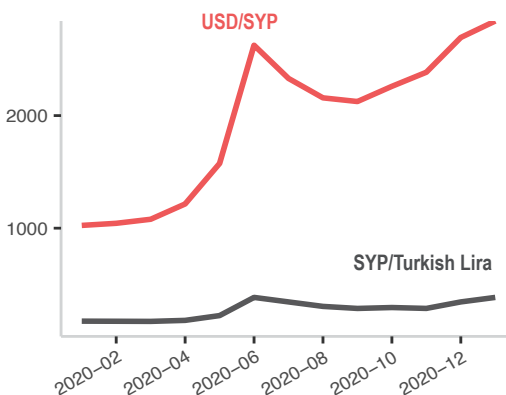
In addition to the rising cost of food items themselves, additional items that are necessary for the further preparation and cooking of raw food also increased in price. Median regional prices for vegetable oil and ghee, both commonly used for cooking, rose by 13% and 11% respectively between December and January, continuing a significant upward trend. Both commodities are largely imported into NWS and, therefore, subject to exchange rate fluctuations. The cost of fuels used for cooking also increased over this one-month period, with the median price of liquid petroleum gas increasing by 15% and manually refined kerosene increasing by 7%. As reported above, manually refined kerosene is often unavailable in many markets of NWS (reported as unavailable by 54% of surveyed fuel vendors in January), leading consumers in NWS to rely more heavily on the use of liquid petroleum gas for cooking purposes.

MEDIAN SMEB COSTS, BY MONTH

Thousand Syrian Pounds



EXCHANGE RATES, BY MONTH & CURRENCY



MEDIAN SMEB COSTS & CHANGES*

Syrian Pounds

Sub-district	SMEB	One month change*	Six month change*
Northwest Syria	322,441	14%	44%
Afrin	268,454	NA	29%
Aghtrin	290,308	11%	40%
Al Bab	296,448	12%	35%
Ariha	NA	NA	NA
Armanaz	350,996	18%	53%
Ar-Ra'ee	285,940	13%	41%
Atareb	368,749	NA	41%
A'zaz	294,113	6%	21%
Badama	308,947	5%	33%
Bennsh	306,075	17%	34%
Bulbul	333,442	18%	48%
Dana	343,605	17%	51%
Daret Azza	325,988	16%	46%
Darkosh	366,844	23%	73%
Ghandorah	295,695	9%	39%

Sub-district	SMEB	One month change*	Six month change*
Harim**	279,581	4%	28%
Idleb	346,275	25%	59%
Jandairis	307,627	NA	40%
Janudiyeh	NA	NA	NA
Jarablus	297,645	6%	43%
Jisr-Ash-Shugur	331,380	12%	48%
Kafr Takharim	318,894	13%	41%
Maaret Tamsrin	329,504	15%	46%
Ma'btali	332,455	NA	77%
Mare'	330,173	13%	47%
Mhambal	343,021	18%	54%
Qourqeena	340,864	16%	51%
Raju	314,063	NA	41%
Salqin	342,371	16%	41%
Sharan	289,319	8%	30%
Sheikh El-Hadid	304,612	20%	47%
Suran	300,702	13%	31%
Teftnaz	343,643	NA	52%

* For price and change calculations, only the communities within a sub-district with consistent coverage across months are included.

** SMEB calculated without water trucking component.

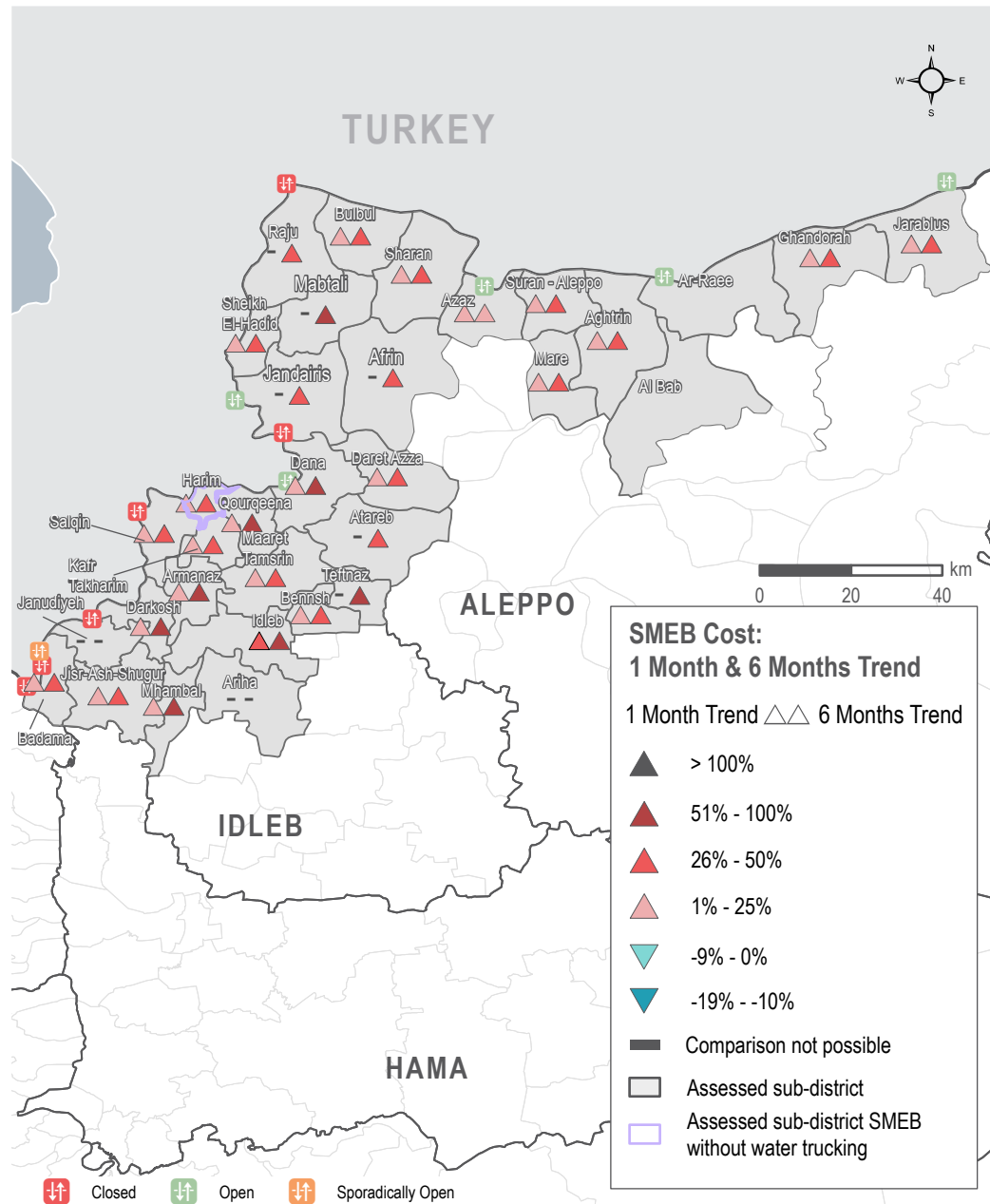
Note: Lack of data for a SMEB item does not necessarily imply a shortage.

SUB-DISTRICTS WITH INCOMPLETE SMEB IN JANUARY

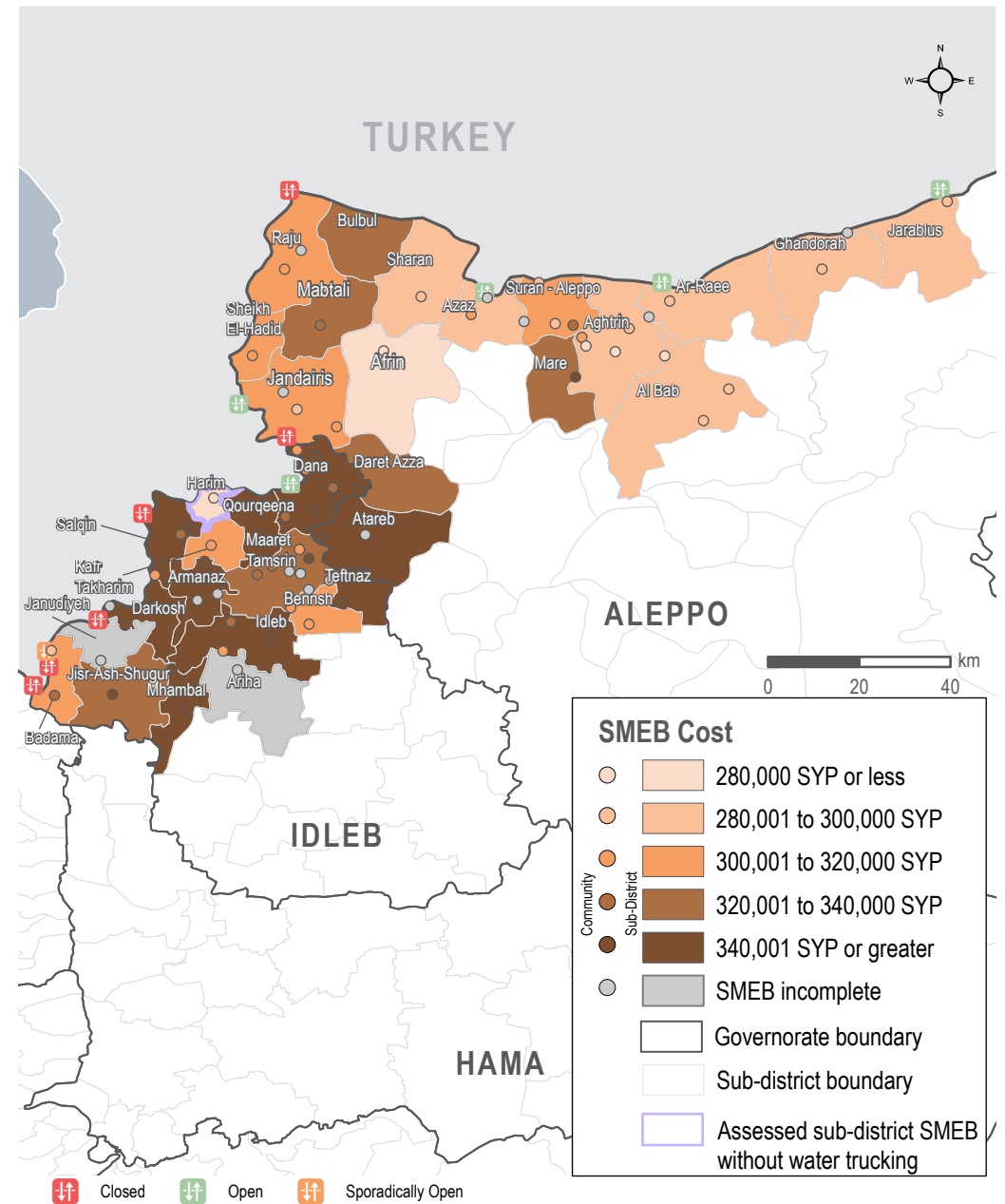
- Ariha: Toothpaste, Liquid Petroleum Gas
- Atareb: Liquid Petroleum Gas
- Janudiyeh: Toothpaste
- Raju: Bread, Chicken, Kerosene

Note: Lack of data for a SMEB item does not necessarily imply a shortage.

SMEB COST: ONE MONTH & SIX MONTHS TREND



SMEB COST RANGES (SYP), BY SUB-DISTRICTS & COMMUNITIES



MEDIAN SMEB COST: FOOD ITEMS

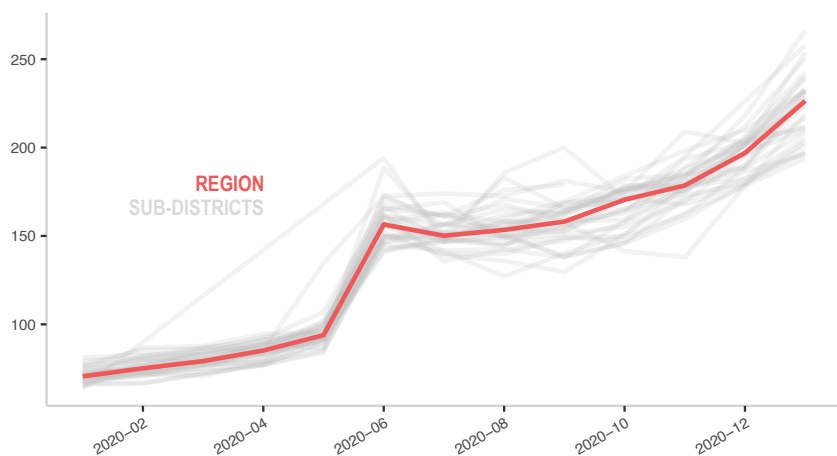
See Page 1, Syrian Pounds

Sub-district	SMEB Food	One month change	Six month change	Sub-district	SMEB Food	One month change	Six month change
Northwest Syria	226,381	15%	51%	Harim	196,275	5%	29%
Afrin	193,825	NA	30%	Idleb	228,626	20%	46%
Aghtrin	196,909	8%	39%	Jandairis	211,900	NA	43%
Al Bab	201,380	12%	37%	Janudiyeh	232,770	11%	57%
Ariha	NA	NA	NA	Jarablus	210,094	7%	55%
Armanaz	242,788	18%	56%	Jisir-Ash-Shugur	232,760	15%	58%
Ar-Ra'ee	203,325	13%	44%	Kafr Takharim	223,525	10%	39%
Atareb	253,805	25%	46%	Maaret Tamsrin	231,500	18%	55%
A'zaz	216,738	11%	28%	Ma'btali	232,750	NA	67%
Badama	210,925	3%	40%	Mare'	225,975	12%	44%
Bennsh	225,150	20%	49%	Mhambal	250,330	18%	56%
Bulbul	231,175	22%	58%	Qourqeena	226,788	14%	50%
Dana	240,620	20%	61%	Raju	229,350	NA	42%
Daret Azza	232,170	15%	42%	Salqin	239,400	19%	47%
Darkosh	266,275	22%	76%	Sharan*	197,550	10%	34%
Ghandorah	208,625	11%	49%	Sheikh El-Hadid	219,250	23%	48%
				Suran	205,513	13%	31%
				Teftnaz	257,750	NA	76%

* For this sub-district, more than 50% of the SMEB food items median price rely on less than 3 observations.

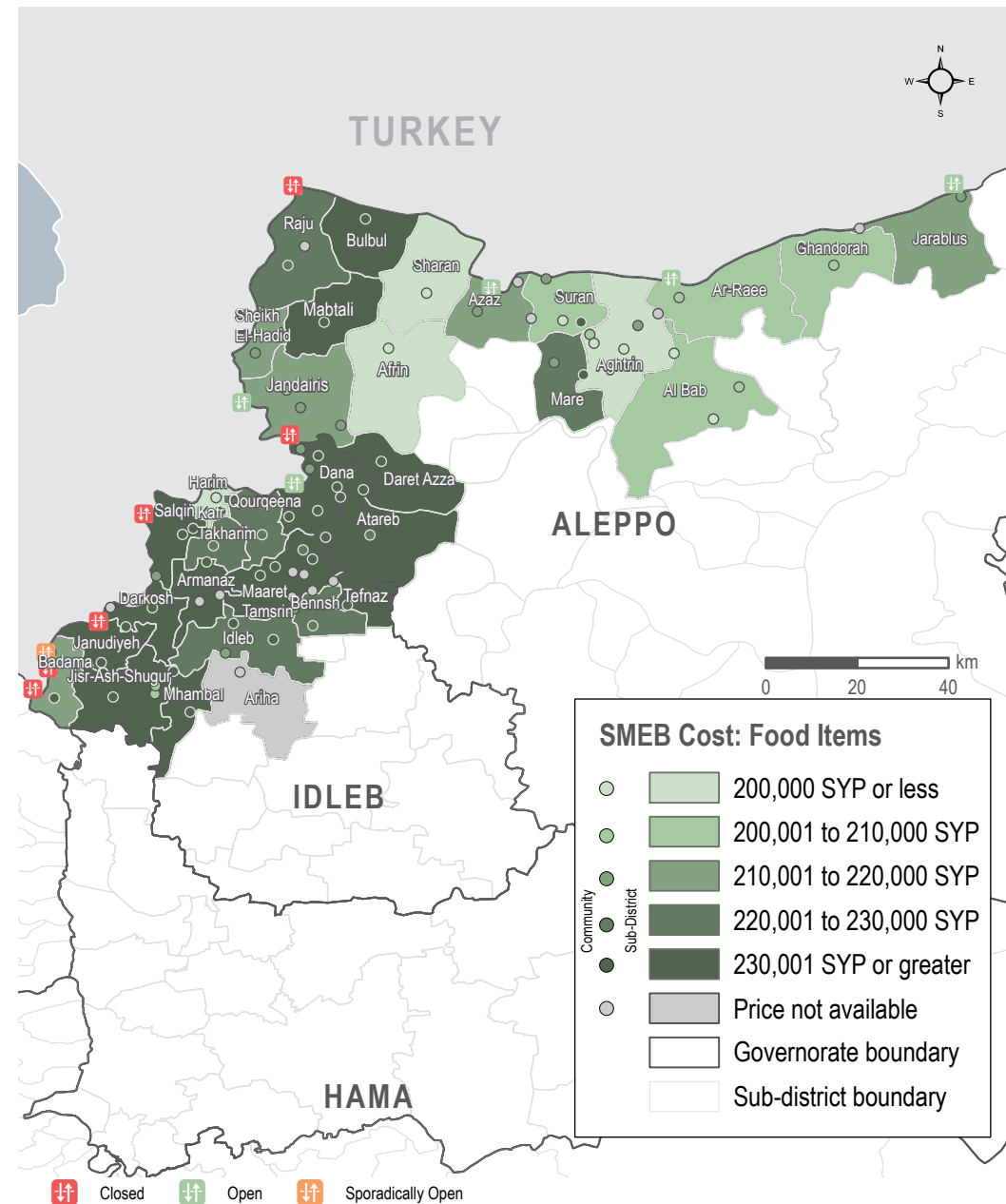
MEDIAN SMEB COST: FOOD ITEMS, BY MONTH

Thousand Syrian Pounds



SMEB FOOD ITEMS' COST

Sub-districts & Communities, Syrian Pounds



MEDIAN SMEB COOKING FUEL PRICE

Kerosene 25L, Syrian Pounds

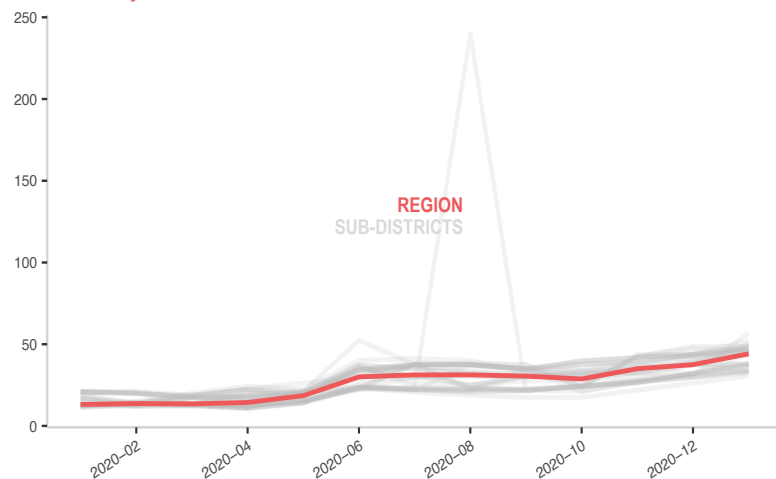
Sub-district	SMEB Cooking Fuel	One month change	Six month change	Sub-district	SMEB Cooking Fuel	One month change	Six month change
Northwest Syria	44,125	18%	41%	Harim	46,250	-3%	23%
Afrin**	30,625	NA	48%	Idleb	57,000	82%	151%
Aghtrin	50,000	29%	67%	Jandairis	46,250	NA	23%
Al Bab	44,125	14%	47%	Janudiyeh*	36,750	14%	63%
Ariha*	38,000	18%	63%	Jarablus	38,125	2%	9%
Armanaz	52,500	20%	47%	Jisr-Ash-Shugur	45,000	6%	20%
Ar-Ra'ee*	34,688	16%	32%	Kafr Takharim*	43,750	38%	87%
Atareb*	46,250	10%	23%	Maaret Tamsrin	47,500	9%	27%
A'zaz	33,750	-10%	13%	Ma'btali	46,250	NA	111%
Badama	46,875	7%	21%	Mare'	50,000	33%	67%
Bennsh*	33,338	5%	-11%	Mhambal*	38,500	20%	65%
Bulbul	47,500	6%	27%	Qourqeena	48,750	0%	30%
Dana	46,563	6%	24%	Raju*	33,594	14%	53%
Daret Azza*	37,000	16%	66%	Salqin	48,750	11%	18%
Darkosh*	37,500	17%	67%	Sharan	45,000	3%	20%
Ghandorah*	37,500	0%	7%	Sheikh El-Hadid*	32,500	9%	49%
				Suran	43,750	11%	40%
				Teftnaz*	33,550	NA	-11%

* For these sub-districts, 50% or more the median prices of cooking fuels rely on less than 3 observations.

** For these sub-districts, 100% of the median prices of cooking fuels rely on less than 3 observations.

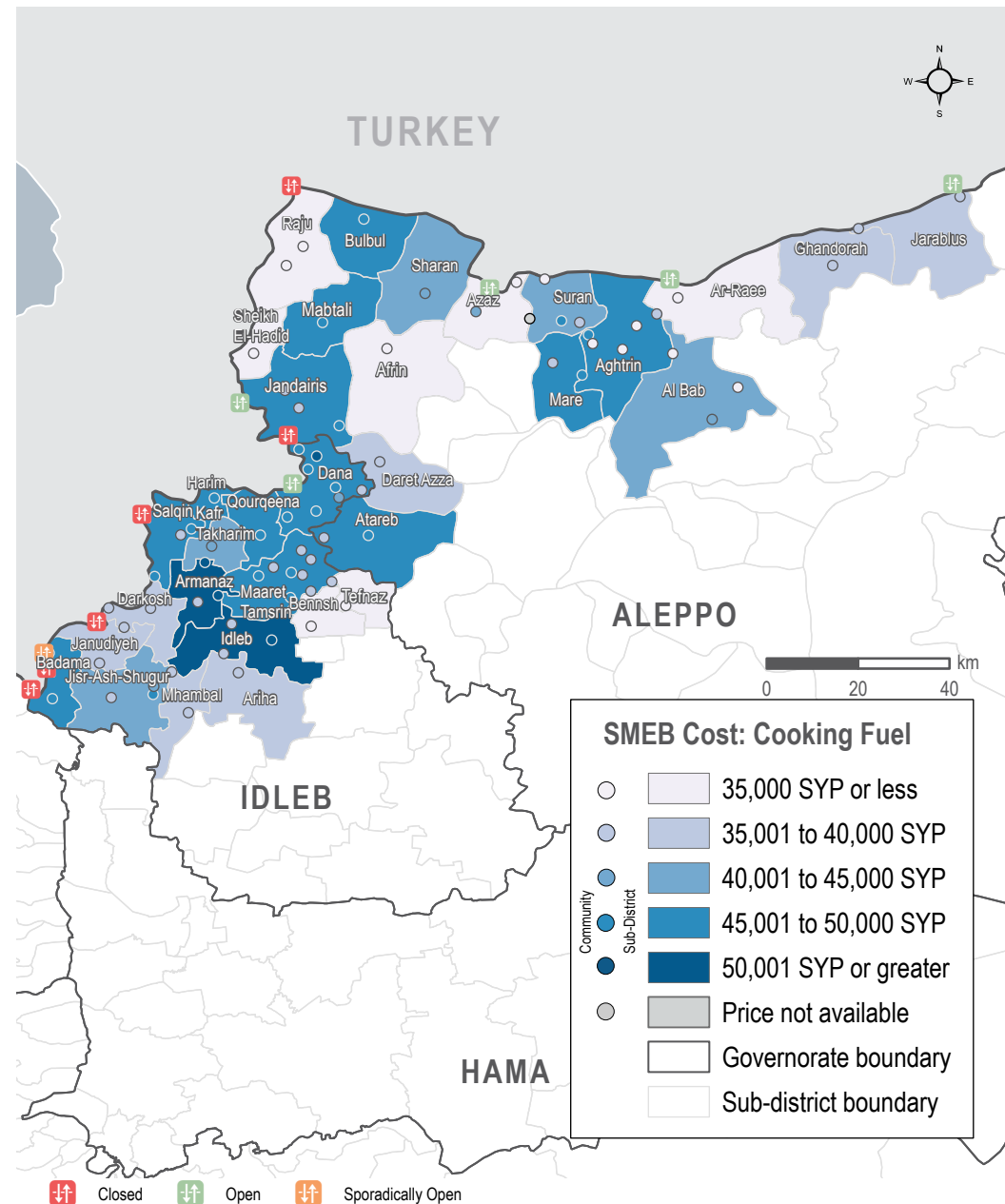
MEDIAN SMEB COOKING FUEL COSTS, BY MONTH

Thousand Syrian Pounds



SMEB COOKING FUEL COST

Sub-districts & Communities, Syrian Pounds



MEDIAN SMEB WATER TRUCKING PRICE

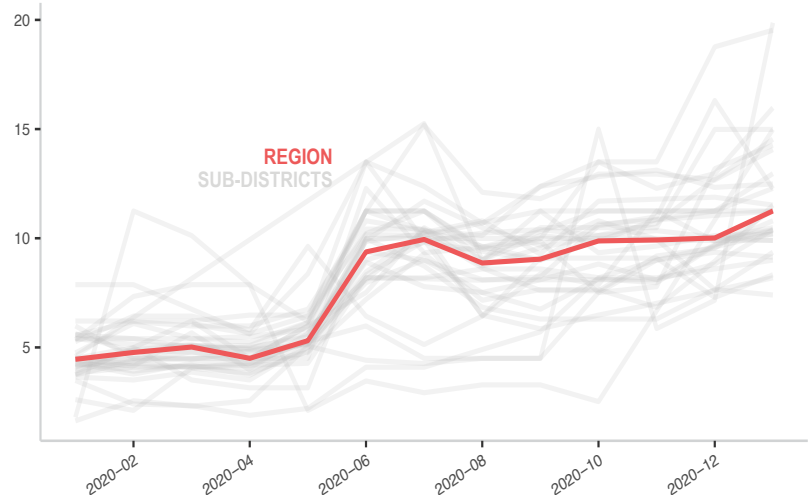
4,500L, Syrian Pounds

Sub-district	SMEB Water Truck	One month change	Six month change	Sub-district	SMEB Water Truck	One month change	Six month change
Northwest Syria	11,250	12%	13%	Harim**	NA	NA	NA
Afrin	11,250	NA	9%	Idleb	19,530	4%	58%
Aghtrin	10,395	5%	-8%	Jandairis	10,215	NA	149%
Al Bab	14,063	11%	-7%	Janudiyeh	14,265	8%	217%
Ariha	8,325	14%	62%	Jarablus	12,488	1%	21%
Armanaz	11,520	29%	24%	Jisr-Ash-Shugur	9,900	0%	1%
Ar-Ra'ee	10,485	5%	5%	Kafr Takharim	11,305	18%	11%
Atareb	10,395	18%	16%	Maaret Tamsrin	9,900	-1%	0%
A'zaz	10,179	1%	-33%	Ma'btali	14,985	NA	412%
Badama	9,360	22%	-20%	Mare'	12,263	-25%	51%
Bennsh	7,403	-3%	-15%	Mhambal	14,535	14%	40%
Bulbul	11,520	-3%	12%	Qourqeena	19,870	178%	366%
Dana	10,350	6%	15%	Raju	9,135	-2%	-19%
Daret Azza	10,800	12%	39%	Salqin	12,285	9%	19%
Darkosh	15,975	23%	71%	Sharan	9,000	5%	10%
Ghandorah	11,250	0%	11%	Sheikh El-Hadid	14,985	0%	43%
				Suran	12,960	15%	15%
				Teftnaz	8,190	NA	-17%

** For these sub-districts, 100% of the median prices of water trucking rely on less than 3 observations.

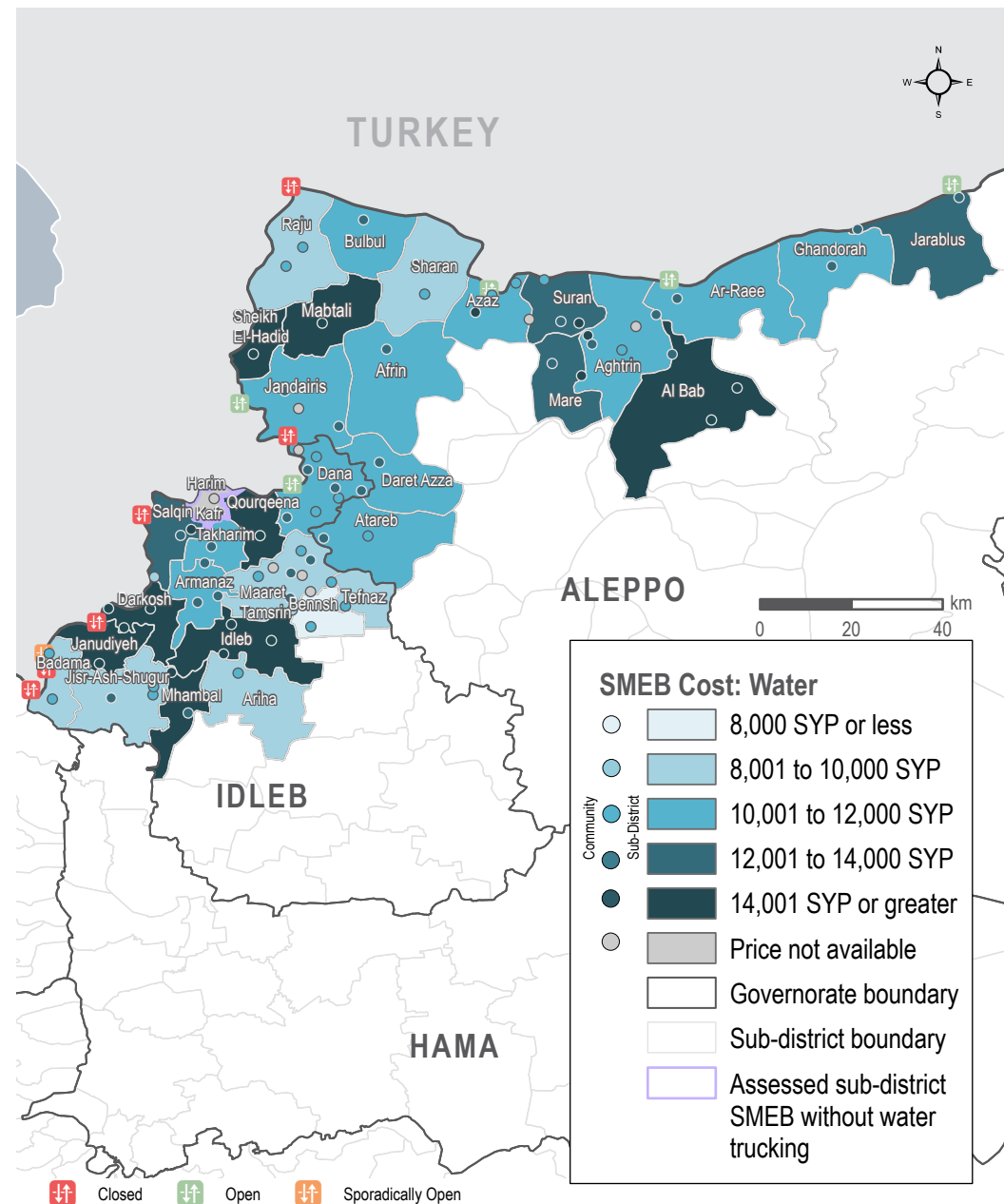
MEDIAN SMEB WATER TRUCKING COSTS, BY MONTH

Thousand Syrian Pounds



SMEB WATER TRUCKING COST

Sub-districts & Communities, Syrian Pounds



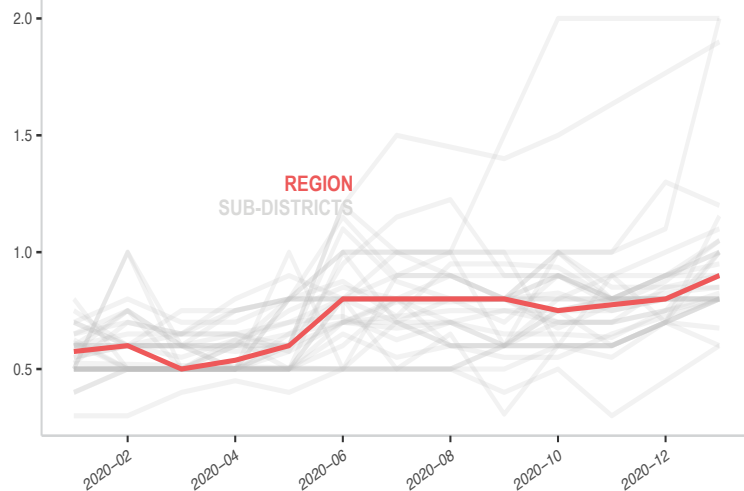
MEDIAN SMEB CELLPHONE DATA PRICE

1GB data, Syrian Pounds

Sub-district	SMEB Data (1GB)	One month change	Six month change	Sub-district	SMEB Data (1GB)	One month change	Six month change
Northwest Syria	900	13%	13%	Harim	900	13%	13%
A'zaz	1,050	17%	45%	Idlib	800	14%	60%
Afrin	1,900	NA	27%	Jandairis	800	NA	45%
Aghtrin	950	6%	6%	Janudiyeh	800	0%	60%
Al Bab	800	7%	0%	Jarablus	1,000	11%	11%
Ar-Ra'ee	800	0%	14%	Jisr-Ash-Shugur	900	0%	13%
Ariha	600	-14%	-25%	Kafr Takharim	1,050	20%	-9%
Armanaz	800	0%	0%	Ma'btali	2,000	NA	100%
Atareb	1,155	65%	28%	Maaret Tamsrin	800	0%	10%
Badama	850	0%	26%	Mare'	900	13%	3%
Bennsh	675	-4%	35%	Mhambal	800	14%	60%
Bulbul	850	3%	6%	Qourqeena	825	10%	32%
Dana	900	13%	14%	Raju	2,000	82%	150%
Daret Azza	1,100	10%	10%	Salqin	1,000	33%	43%
Darkosh	800	14%	14%	Sharan	900	6%	13%
Ghandorah	1,000	11%	0%	Sheikh El-Hadid	1,000	43%	43%
				Suran	1,200	-8%	20%
				Teftnaz	600	NA	20%

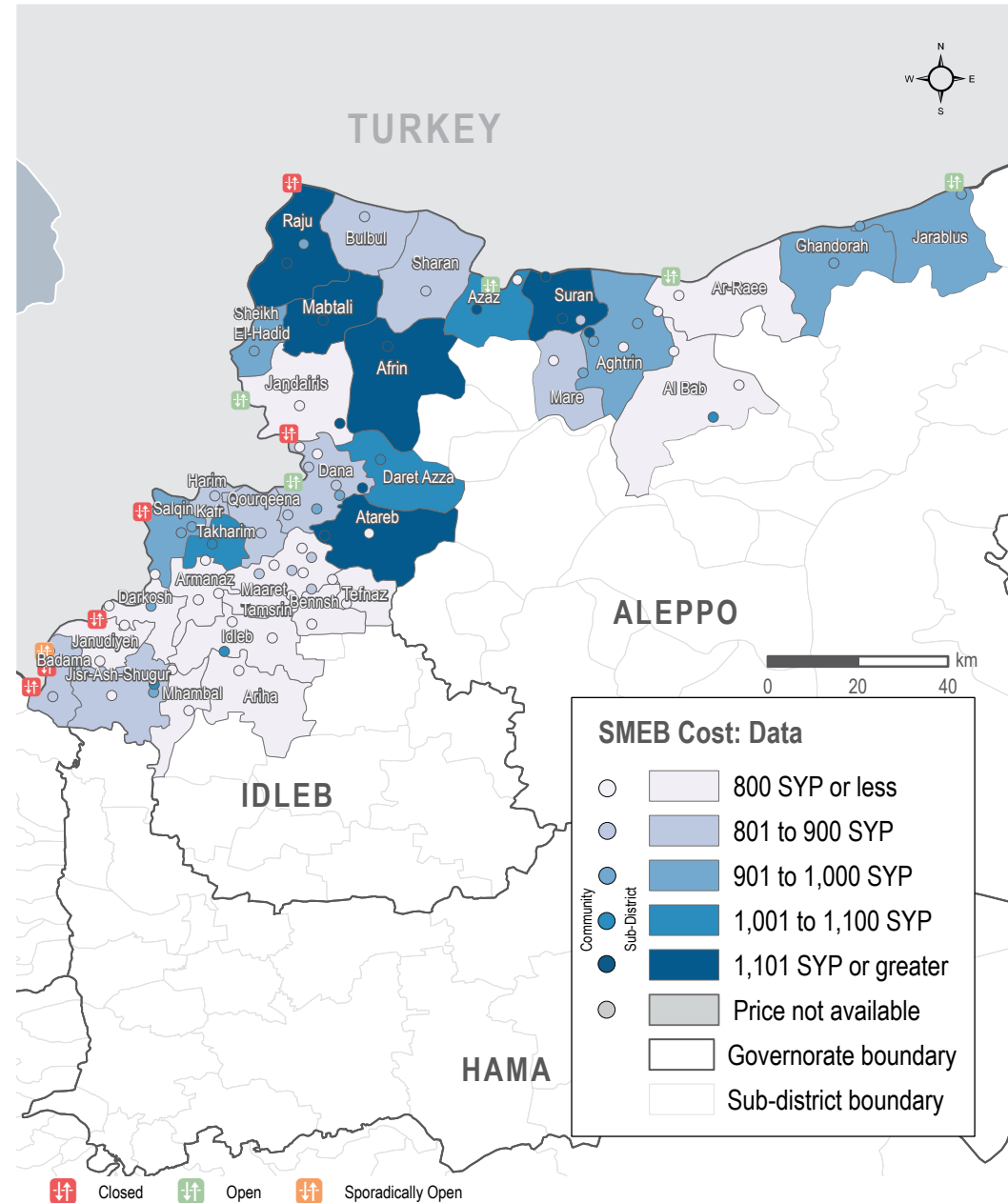
MEDIAN SMEB CELLPHONE DATA COST, BY MONTH

Thousand Syrian Pounds



SMEB CELLPHONE DATA COST

Sub-districts & Communities, Syrian Pounds



MEDIAN TRANSPORT FUEL PRICE

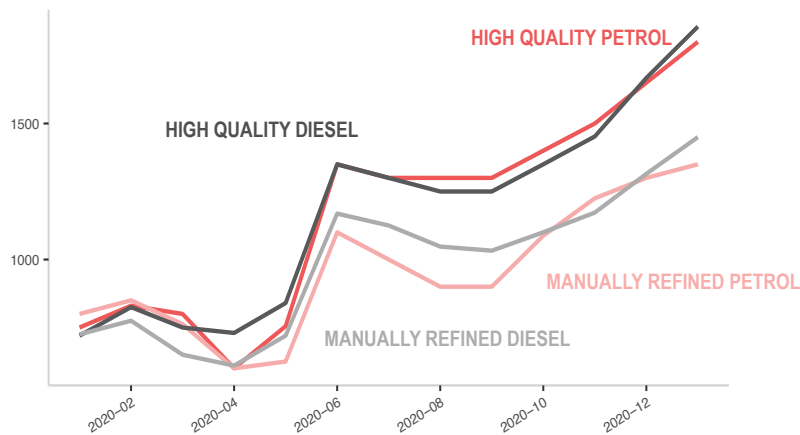
Diesel and Petrol, 1L (High Quality and Manually Refined), Syrian Pounds

Sub-district	Transport Fuel	One month change	Six month change	Sub-district	Transport Fuel	One month change	Six month change
Northwest Syria	1,683	9%	36%	Harim	1,717	5%	39%
A'zaz	1,525	7%	33%	Idleb	1,790	13%	37%
Afrin**	1,583	NA	25%	Jandairis	1,683	NA	36%
Aghtrin	1,513	7%	36%	Janudiyeh*	1,875	13%	34%
Al Bab	1,586	16%	39%	Jarablus	1,619	13%	32%
Ar-Ra'ee	1,650	13%	47%	Jisr-Ash-Shugur	1,708	11%	37%
Ariha*	1,870	11%	39%	Kafr Takharim	1,722	10%	34%
Armanaz	1,804	9%	37%	Ma'btali	1,600	NA	23%
Atareb	1,673	8%	40%	Maaret Tamsrin	1,717	10%	38%
Badama	1,683	5%	29%	Mare'	1,688	13%	43%
Bennsh	1,723	6%	31%	Mhambal	1,783	12%	26%
Bulbul*	1,450	12%	14%	Qourqeena	1,608	-2%	25%
Dana	1,720	10%	39%	Raju	1,600	16%	23%
Daret Azza	1,690	8%	41%	Salqin	1,767	12%	42%
Darkosh	1,725	11%	40%	Sharan	1,658	11%	34%
Ghandorah	1,538	7%	28%	Sheikh El-Hadid	1,620	17%	39%
				Suran	1,556	10%	38%
				Teftnaz	1,697	NA	27%

* For this sub-district, more than 50% of the median prices for the items composing the transport fuel indicator rely on less than 3 observations.
 ** For this sub-district, 100% of the median prices for the items composing the transport fuel indicator rely on less than 3 observations.

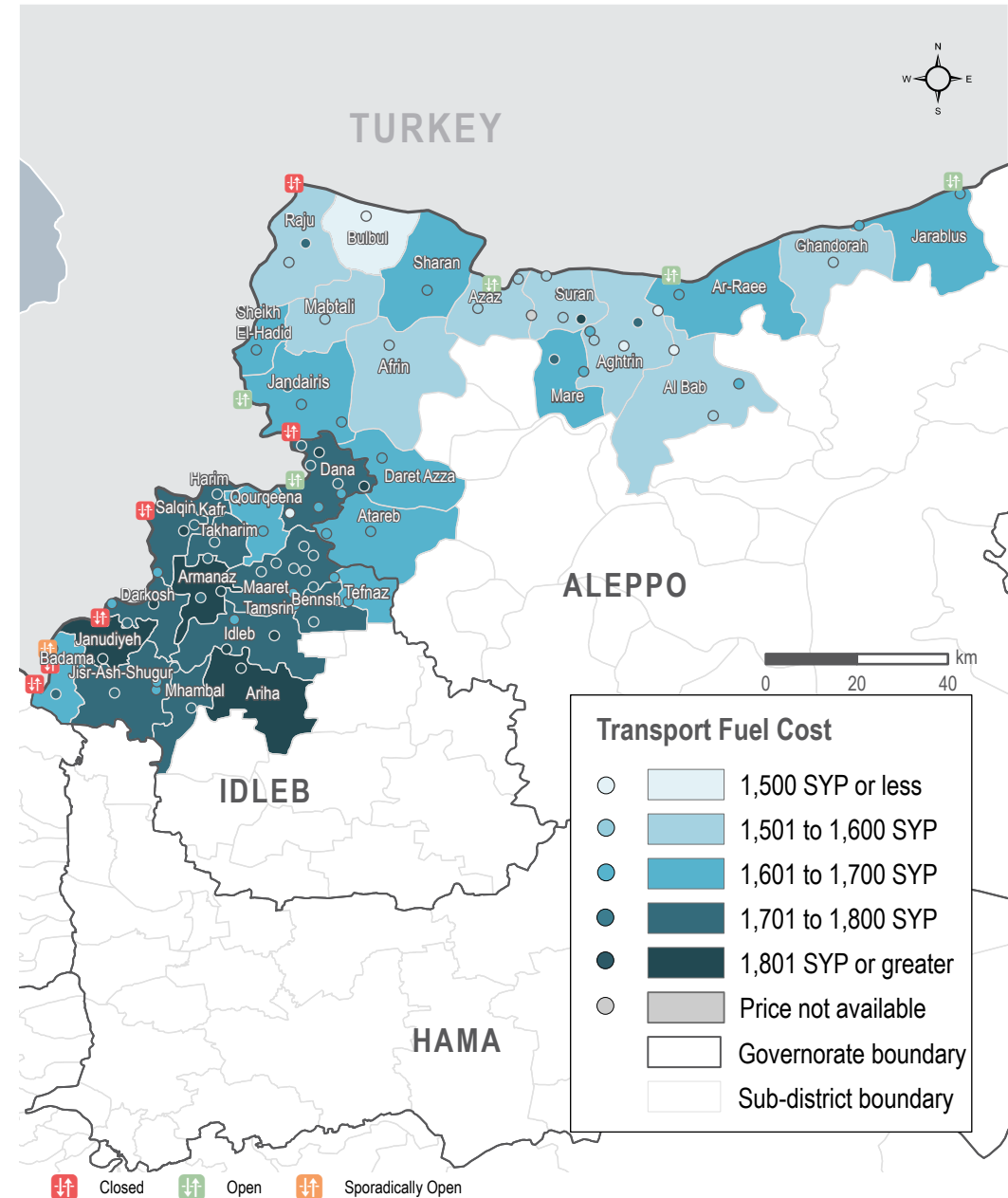
MEDIAN TRANSPORT FUEL COSTS, BY MONTH & TYPE

Syrian Pounds



TRANSPORT FUEL COST

Sub-districts & Communities, Syrian Pounds



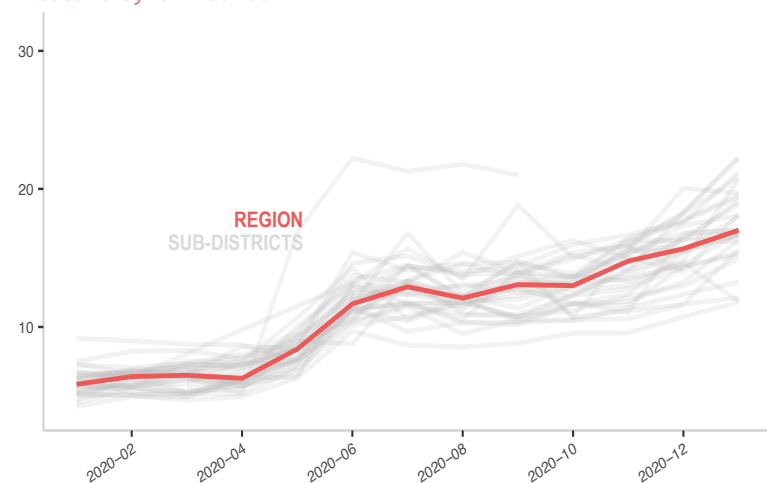
MEDIAN SMEB HYGIENE ITEMS' PRICE

12 bars of soap, 4 packs of 10 sanitary pads, 3kg of laundry/dish soap, 200g of toothpaste, Syrian Pounds

Sub-district	SMEB Hygiene Items	One month change	Six month change	Sub-district	SMEB Hygiene Items	One month change	Six month change
Northwest Syria	17,008	9%	32%	Harim	16,650	7%	29%
A'zaz	11,878	-19%	13%	Idlib	16,160	-1%	50%
Afrin	12,125	NA	3%	Jandairis	17,000	NA	27%
Aghtrin	11,800	10%	36%	Janudiyeh	NA	NA	NA
Al Bab	15,398	7%	25%	Jarablus	15,173	6%	29%
Ar-Ra'ee	16,693	15%	60%	Jisr-Ash-Shugur	19,700	-2%	47%
Ariha	22,350	22%	59%	Kafr Takharim	17,016	1%	17%
Armanaz	18,900	15%	53%	Ma'btali	13,275	NA	37%
Atareb	31,418	NA	48%	Maaret Tamsrin	16,815	2%	26%
Badama	19,383	10%	35%	Mare'	18,000	17%	35%
Bennsh	18,156	30%	20%	Mhambal	14,925	15%	28%
Bulbul	19,134	18%	32%	Qourqeena	20,850	15%	24%
Dana	21,200	21%	47%	Raju	18,073	4%	54%
Daret Azza	22,175	21%	68%	Salqin	17,050	2%	47%
Darkosh	20,700	40%	58%	Sharan	16,684	5%	31%
Ghandorah	16,690	9%	33%	Sheikh El-Hadid	15,625	34%	36%
				Suran	16,300	23%	27%
				Teftnaz	19,578	NA	25%

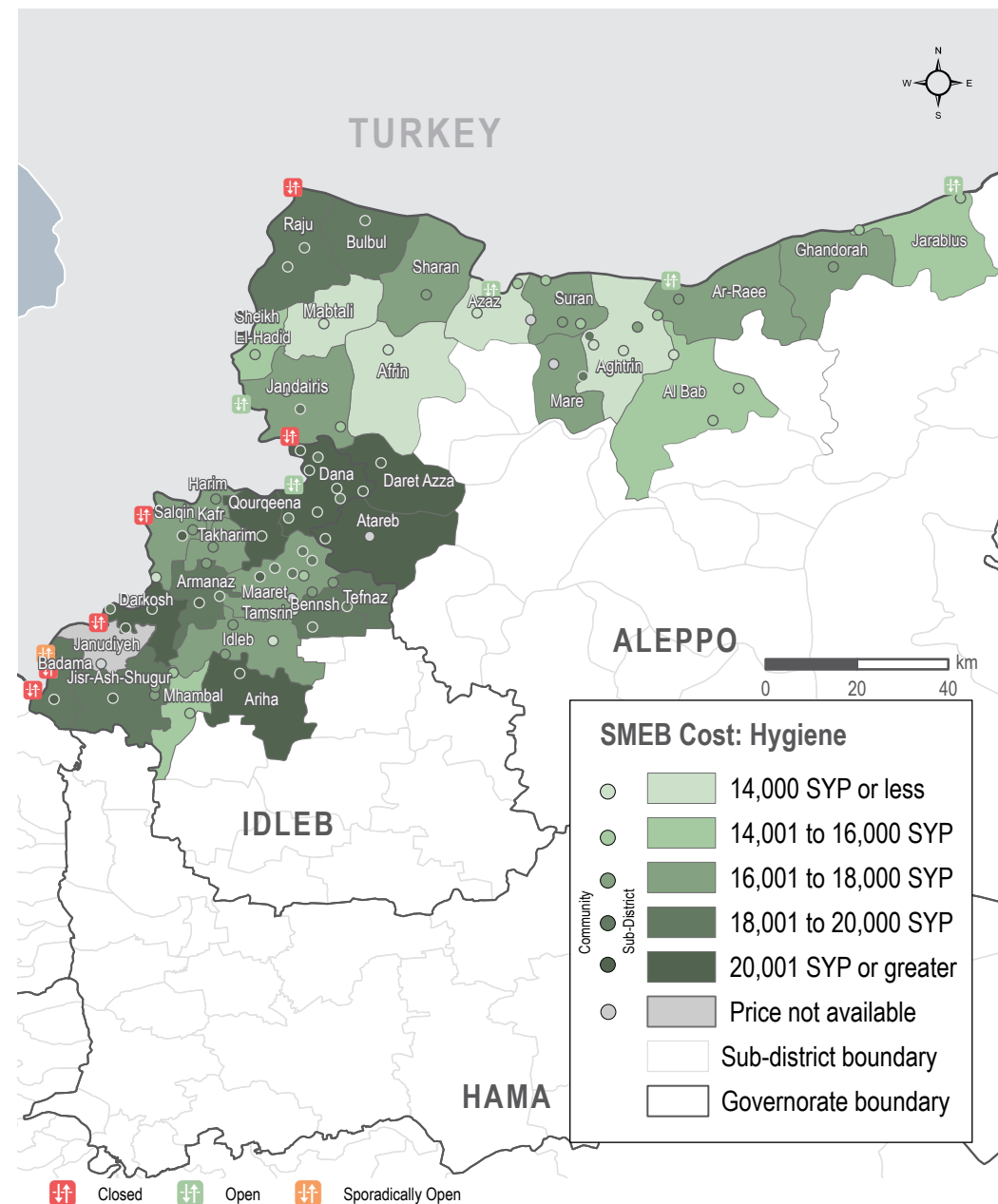
MEDIAN SMEB HYGIENE ITEMS' COSTS, BY MONTH

Thousand Syrian Pounds



SMEB HYGIENE ITEMS' COST

Sub-districts & Communities, Syrian Pounds



MEDIAN WINTERISATION ITEMS' PRICE

Per 1 piece/pair, Syrian Pounds

* For these sub-districts, the median price are relying on less than 3 observations.
** NA means data not available.

Sub-district	Jerrycan	Plastic sheet	Winter carpet	Kerosene/diesel heater	Winter blanket	Mattress	Solid fuel stove	Fire extinguisher	Fire blanket
Northwest Syria	3,600	13,500	77,000	35,000	12,000	13,000	38,250	44,000	27,350
Afrin	5,000	19,000	60,000	45,000	10,750	13,500	30,500	NA	NA
Aghtrin	2,500	16,000	99,500*	45,000	22,500	11,000	32,500*	NA	NA
Al Bab	2,500	10,000	127,000	42,200	11,000	15,000	31,000	NA	NA
Ariha	NA	NA	NA	NA	12,000	14,000	34,000	NA	NA
Armanaz	3,500	12,000	88,000	35,000	25,000	13,000	38,880	NA	NA
Ar-Ra'ee	3,500	20,000	70,250	42,300	NA	NA	NA	NA	NA
Atareb	2,700*	13,000*	26,000*	23,000*	14,500	15,000	39,000	NA	NA
A'zaz	2,750	11,000	102,500	42,000	8,500*	9,000*	30,000*	NA	NA
Badama	4,000	14,500	80,000	38,500	11,500	13,000	73,000	NA	NA
Bennsh	3,750	13,100	42,000	29,000	6,300	13,250	29,000	NA	NA
Bulbul	4,000*	16,000*	76,000*	42,000*	10,000*	12,000*	77,000*	NA	NA
Dana	3,800	15,000	84,500	39,000	11,000	13,000	45,000	44,000	19,700
Daret Azza	2,500	11,000	128,000	40,000	13,000	15,500	38,000	NA	NA
Darkosh	3,600	12,000	80,000	40,000	11,500	12,000	36,000	NA	NA
Ghandorah	3,500*	22,000*	85,000*	41,500*	8,500*	16,750*	32,500*	NA	NA
Harim	4,300	16,000	76,000	40,000	10,500	12,000	79,000	NA	NA
Idleb	3,300	7,850	41,250	24,750	8,500	7,500	36,000	47,000	35,000
Jandairis	4,000	13,500	71,500	43,000	12,250	14,000	40,000	36,000	NA
Janudiyeh	4,500*	22,000*	85,000*	42,000*	12,000*	12,000*	70,000*	NA	NA
Jarablus	3,800	22,500	90,700	56,800	28,400	12,500	38,500	NA	NA
Jisr-Ash-Shugur	3,500	15,000	80,000	52,500	10,000	11,000	25,000	NA	NA
Kafr Takharim	3,950	11,250	44,000	32,500	12,750	12,300	31,000	NA	NA
Maaret Tamsrin	4,000	16,000	72,500	38,250	NA	NA	NA	NA	NA
Ma'btali	NA	NA	NA	NA	9,000	11,400	75,000	NA	NA
Mare'	4,500	13,500	65,000	70,000	13,000	14,000	40,000	NA	NA
Mhambal	3,700*	24,000*	105,000*	34,000*	36,000*	12,800*	68,000*	NA	NA
Qourqena	4,000	16,500	77,000	42,000	12,000	13,000	70,000	NA	NA
Raju	3,250*	9,750*	60,500*	13,500*	13,750*	7,750*	37,000*	NA	NA
Salqin	3,000	11,000	77,500	37,500	12,000	16,500	42,000	NA	NA
Sharan	3,400	16,000	60,000	27,000	4,500	9,000	70,000	NA	NA
Sheikh El-Hadid	3,000	11,000	85,000	40,000	12,000	13,000	35,000	NA	NA
Suran	3,000	12,000	75,000	40,000	12,000	13,000	31,000	NA	NA
Teftnaz	4,500	12,100	28,500	NA	5,000	15,800	NA	NA	NA

MEDIAN WINTERISATION ITEMS' PRICE - CLOTHES

Per 1 piece/pair, Syrian Pounds

* For these sub-districts, the median price are relying on less than 3 observations.

** NA means data not available.

Sub-district	Adult's hat	Children's hat	Second hand men's winter jacket	Second hand women's winter jacket	Second hand children's winter jacket	Second hand men's winter boots	Second hand women's winter boots	Second hand children's winter boots	Second hand adult's hat	Second hand children's hat	Men's winter jacket	Women's winter jacket	Children's winter jacket	Men's winter boots	Women's winter boots	Children's winter boots
Northwest Syria	3,000	1,800	9,000	9,000	5,000	7,500	7,250	4,000	1,500	1,000	37,500	45,000	23,000	15,000	15,000	8,000
Afrin	3,000	2,000	10,000	8,000	5,000	7,000	7,500	5,000	1,000	1,000	35,000	32,500	30,000	10,000	9,500	7,000
Aghtrin	2,000	1,250	5,000	5,000	3,250	4,000	4,000	2,000	500	450	25,000	22,500	10,000	15,000	12,000	7,000
Al Bab	3,000	2,000	5,500	5,000	3,500	5,000	4,000	3,000	1,500	1,000	37,500	45,000	22,500	16,000	11,000	8,000
Ariha	2,550	2,100	7,500*	8,500*	4,000*	6,250*	5,500*	3,500*	1,100*	850*	37,500	38,000	22,500	17,000	15,000	8,750
Armanaz	2,500*	2,000*	6,500*	9,000*	6,000*	3,250*	2,500*	2,000*	1,000*	1,000*	64,000*	70,000*	47,000*	15,000*	16,000*	9,000*
Ar-Ra'ee	2,000*	2,000*	NA	NA	NA	NA	NA	NA	NA	NA	NA	NA	NA	18,500*	22,000*	12,000*
Atareb	3,250	2,000	6,250	9,000	4,500	8,000	8,000	4,900	1,400	1,250	39,000	55,500	23,250	11,000	11,000	7,500
A'zaz	1,500*	1,500*	7,500*	7,500*	5,000*	4,000*	4,000*	3,800*	1,000*	1,000*	16,000*	17,000*	14,000*	11,000*	12,000*	9,000*
Badama	2,650	1,875	12,000*	14,500*	5,500*	8,500*	9,500*	4,500*	1,800*	1,200*	43,500	54,000	29,500	16,250	16,000	9,500
Bennsh	3,300	1,500	5,400	3,800	3,600	9,250	5,200	3,650	1,150	1,100	21,950	27,000	12,800	12,400	11,500	10,400
Bulbul	3,100*	1,650*	12,000*	14,000*	5,000*	8,000*	9,000*	4,000*	1,500*	900*	42,000*	54,000*	29,500*	14,000*	16,500*	8,000*
Dana	3,000	1,800	12,500	15,000	6,000	8,000	9,000	5,000	1,700	1,000	39,900	45,000	23,000	15,000	17,000	9,000
Daret Azza	2,750	1,750	12,000	10,000	5,000	7,000	5,000	4,000	800	500	30,000	25,000	15,000	12,500	10,500	7,750
Darkosh	3,800	2,200	10,500*	13,500*	6,250*	7,500*	7,500*	4,000*	1,500*	1,000*	42,000	52,000	30,000	15,000	15,500	9,000
Ghandorah	3,000*	3,500*	5,500*	5,250*	4,000*	5,750*	5,000*	4,250*	1,500*	1,000*	25,000*	30,000*	15,000*	15,000*	13,000*	12,000*
Harim	2,250*	1,550*	12,000*	16,000*	7,000*	8,000*	8,500*	5,000*	1,500*	500*	34,000*	37,500*	17,000*	11,500*	14,750*	7,250*
Idleb	3,250	2,250	12,250*	16,250*	6,000*	15,000*	14,000*	6,750*	2,000*	1,000*	35,000	44,500	23,000	19,000	22,750	12,000
Jandairis	3,000	1,750	9,000*	12,000*	6,000*	7,500*	9,000*	3,500*	2,500*	1,000*	31,000	38,000	18,000	9,000	9,500	4,000
Janudiyeh	2,500*	2,000*	12,000*	14,000*	8,000*	8,000*	8,000*	4,000*	1,200*	1,000*	39,000*	52,500*	24,500*	12,000*	15,000*	7,500*
Jarablus	2,750*	1,900*	7,000	6,000	3,000	5,000	5,000	3,000	1,000	700	40,250*	29,000*	23,500*	21,250*	15,750*	10,750*
Jisr-Ash-Shugur	2,500	1,500	12,000	14,000	5,000	7,000	7,000	4,000	1,500	800	38,000	45,000	23,000	12,000	14,000	7,000
Kafr Takharim	2,500*	2,250*	5,500	5,500	5,250	8,000	8,000	5,000	800	800	35,000	40,000	25,000	9,300	6,000	5,000
Maaret Tamsrin	3,000	2,000	NA	NA	NA	NA	NA	NA	NA	NA	NA	NA	25,000	18,000	25,000	18,000
Ma'btali	3,000	1,500	8,750	9,000	5,250	7,350	7,000	4,000	1,500	900	38,000	48,000	23,000	14,000	15,000	8,000
Mare'	3,000	1,500	10,000*	14,000*	5,000*	7,750*	8,750*	4,000*	1,750*	1,000*	40,000	65,000	30,000	14,000	12,000	8,000
Mhambal	3,100*	2,000*	14,750*	22,000*	6,750*	9,000*	9,250*	5,300*	1,350*	1,050*	52,000*	58,000*	29,000*	16,000*	16,750*	9,500*
Qourqeena	3,000*	1,750*	9,000	8,000	5,000	11,000	12,500	5,000	3,500	1,250	33,800	33,800	13,160	15,000*	16,500*	7,500*
Raju	2,300	1,300	9,500*	13,000*	4,500*	7,500*	6,000*	3,000*	1,500*	1,000*	42,000	45,000	19,000	15,500	18,500	7,500
Salqin	2,000	1,500	12,500*	16,500*	8,750*	10,000*	7,250*	4,000*	1,500*	900*	48,000	52,000	28,000	15,000	16,500	9,250
Sharan	2,500*	1,500*	8,000*	8,500*	4,500*	5,000*	7,000*	3,500*	1,200*	800*	32,000*	43,000*	25,000*	10,000*	16,000*	7,500*
Sheikh El-Hadid	2,750*	1,500*	15,000*	14,000*	8,000*	8,000*	9,000*	5,000*	2,000*	1,000*	50,000*	77,500*	35,000*	15,000*	15,500*	10,000*
Suran	3,000	2,000	8,800	6,750	4,550	6,000	5,750	5,000	1,000	500	37,500	47,500	22,500	12,500	12,000	7,500
Teftnaz	3,200	1,500	5,400	3,600	3,700	10,000	5,600	4,000	1,000	1,000	21,600	25,000	12,000	12,000	11,000	10,500

MEDIAN ALTERNATIVE FUELS PRICE

Per 1 kilo, Syrian Pounds

Sub-district	Firewood	Olive residues	Pistachio shells	Coal
Northwest Syria	375	350	425	350
Afrin	375	375	400	340
Aghtrin	300*	270*	NA	330*
Al Bab	381	368	450	362
Ariha	404	375	400	382
Armanaz	350	250	NA	350
Ar-Ra'ee	284*	300*	NA	NA
Atareb	362	358	380	340
A'zaz	415*	360*	435*	425
Badama	412	375	425	325
Bennsh	412	378	455	432
Bulbul	400	350	435	325
Dana	390	360	425	320
Daret Azza	380	350	400	350
Darkosh	290	350	405*	350
Ghandorah	300	320	NA	380
Harim	400	325	450	300
Idleb	425	340	450	350
Jandairis	325	275	400	285
Janudiyeh	400*	362*	450*	325*
Jarablus	340	280	412	434
Jisr-Ash-Shugur	330	382	425	320
Kafr Takharim	320	325	400	290
Maaret Tamsrin	375*	NA	NA	NA
Ma'btali	400	350	420	300
Mare'	362	375	450*	350
Mhambal	308	NA	NA	492
Qourqeena	410	350	440	310
Raju	275*	230*	NA	NA
Salqin	375	375	425	350
Sharan	375	325	400	300
Sheikh El-Hadid	340	350	400	370
Suran	400	400	380	350
Teftnaz	470	380	480	500

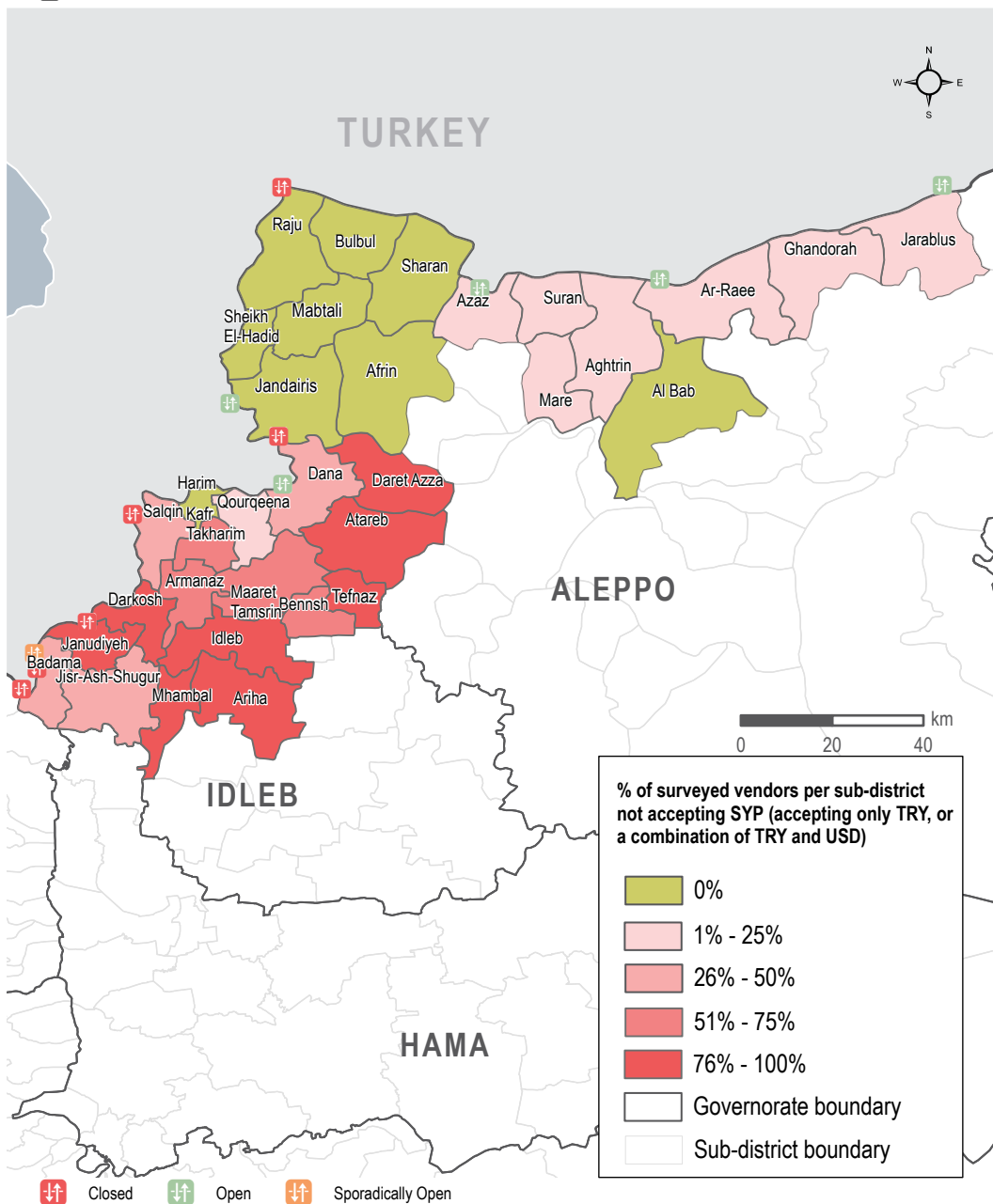
* For these sub-districts, the median price are relying on less than 3 observations.

** NA means data not available.



SURVEYED VENDORS NOT ACCEPTING SYRIAN POUNDS

Sub-districts



MARKET FUNCTIONALITY

In January, only 2 out of the 2,639 surveyed vendors across Aleppo and Idleb governorates reported having closed their shops.



SUPPLY CHALLENGES

During the data collection period, vendor supply challenges and their prevalence in NWS dropped slightly relative to November and December. Of the 2,639 surveyed vendors in NWS, 81% reported facing one or more supply challenges in December (recorded at 86% in both December and November). As in previous months, price inflation was the most commonly reported supply challenge, reported by 78% of vendors. This was most commonly reported in Idleb governorate where 81% of vendors reported this issue. As a seemingly widespread supply challenge, price inflation issues may also impact vendors' ability to keep markets stocked with essential items. Beyond price inflation, 5% reported that the closure of border crossings created a supply challenge, and 4% of vendors reported that their suppliers had limited supply.



RESTOCKING

While supply challenges were reported, most vendors reported that they would be able to restock if they were to run out of supplies, with 17 out of the 2,639 surveyed vendors reporting that they would be unable to do so, and a further 11 vendors not sure if they would be able to restock if they were to run out of supplies. Surveyed vendors were asked after how many days they would hypothetically run out of stock if supply was to be cut; 36% of respondents reported that they would run out of stock in less than 3 days (this remains the same as December) and 24% reported they would run out in 3 to 7 days, marking a 1% decrease since December (see figure 2). Among surveyed vendors, butchers and vegetable vendors most frequently reported that they would run out in less than 3 days if their supply lines were cut, with percentages of 66%, and 77% respectively, for surveyed vendors. On average, 36% of all

surveyed vendors reported that they would run out in less than 3 days if their supply lines were cut.

Figure 2: Reported number of days before all types of vendors would hypothetically run out of stock, if supply lines were to be cut (2,639 respondents)



AVAILABILITY OF USD BANKNOTES

Of the 202 surveyed informal exchange vendors who were asked if they had limited stock of any USD banknote denominations, 100% of surveyed vendors in Idleb governorate and 90% of surveyed vendors in Aleppo governorate reported having limited stock of one or more denominations.

Shortages of small banknotes were more commonly reported by surveyed vendors in Idleb and Aleppo governorate, most frequently for 20 USD banknotes (reported by 67% of all surveyed vendors) and 10 USD banknotes (63% of surveyed vendors). 5 USD banknotes were reported as being in limited stock by 60% of all surveyed vendors).



CURRENCIES ACCEPTED

Surveyed vendors were also asked about the type(s) of currencies they accepted in their shops. In January, 86% of surveyed vendors reported selling their goods not exclusively in SYP or not in SYP at all. Significant differences in currency usage between governorates were also noted; while 34% of surveyed vendors in Aleppo reported selling their goods in SYP only, no vendors in Idleb reported the same (0%). Surveyed vendors in Idleb, however, more commonly reported selling items in TRY only (reported by 45%), compared to only 9% of vendors in Aleppo who reported the same. Additionally, more vendors in Idleb reporting accepting currency combinations that included the USD (19% of vendors) than did vendors in Aleppo (13%). In Aleppo, vendors most commonly reported selling items in both SYP and TRY (44%), but vendors in Idleb most commonly reported selling items in TRY only (45%).

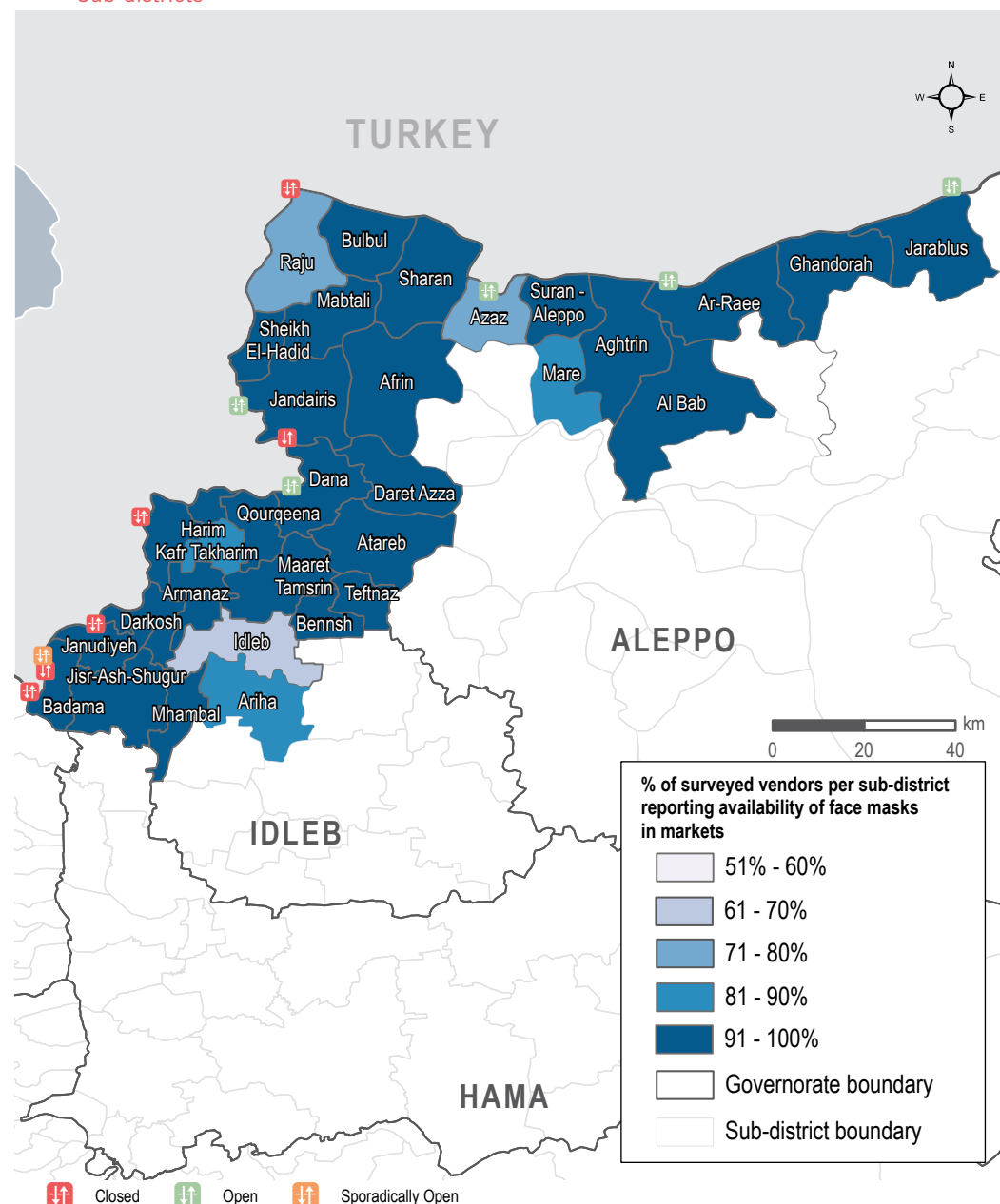
MEDIAN PRICE OF COVID-19 ITEMS

Syrian Pounds

Sub-district	Face mask (1 piece)	Plastic gloves (box of 100)	Sterile alcohol (1 litre)	Hand sanitiser (500 ml)	Bottled bleach (1 litre)	Trash bags (roll of 30)
Northwest Syria	400	18,250	7,000	4,000	1,550	3,125
Afrin	300	18,500	6,000	2,000	2,400	2,550
Aghtrin	500	17,000	8,000	4,200	1,500	2,300
Al Bab	300	20,000	6,000	2,500	1,800	2,200
Ariha	200	22,400	NA	NA	1,400	NA
Armanaz	400	17,500	8,580	4,400	1,600	2,860
Ar-Ra'ee	600	19,000	7,000	2,850	1,700	2,500
Atareb	350	14,000	7,000	5,600	1,650	2,800
A'zaz	395	22,250	8,450	3,800	1,800	2,600
Badama	313	15,000	6,250	4,000	1,725	3,300
Bennsh	500	20,100	11,000	5,000	1,300	7,600
Bulbul	315	16,800	6,300	3,800	2,138	3,300
Dana	400	16,000	7,500	3,500	1,750	3,200
Daret Azza	400	20,000	8,500	4,000	1,500	2,300
Darkosh	400	18,600	17,000	5,500	1,700	3,450
Ghandorah	250	20,500	5,800	6,000	1,500	1,500
Harim	400	16,000	6,000	3,500	1,200	3,400
Idleb	400	11,600	8,050	5,650	1,300	3,800
Jandairis	500	16,000	6,500	3,500	1,500	3,200
Janudiyeh	500	16,500	6,000	4,000	1,500	3,400
Jarablus	300	19,900	5,800	3,000	1,500	1,500
Jisr-Ash-Shugur	390	15,000	7,000	4,000	1,750	3,300
Kafr Takharim	400	16,200	7,000	4,200	1,600	3,200
Maaret Tamsrin	400	16,500	6,500	3,800	1,550	3,300
Ma'bтали	500	27,500	NA	4,000	1,200	3,500
Mare'	550	22,000	6,500	5,500	1,600	3,000
Mhambal	600	32,000	25,000	6,000	1,450	2,000
Qourqeena	400	17,000	7,000	3,800	2,050	3,150
Raju	500	18,250	9,600	3,300	1,225	2,300
Salqin	400	15,500	8,000	4,000	1,600	3,100
Sharan	500	16,500	6,000	3,600	1,300	3,400
Sheikh El-Hadid	400	20,000	10,000	4,500	1,300	3,000
Suran	600	22,800	8,550	4,200	1,600	2,850
Teftnaz	400	20,000	10,900	4,500	1,100	8,000

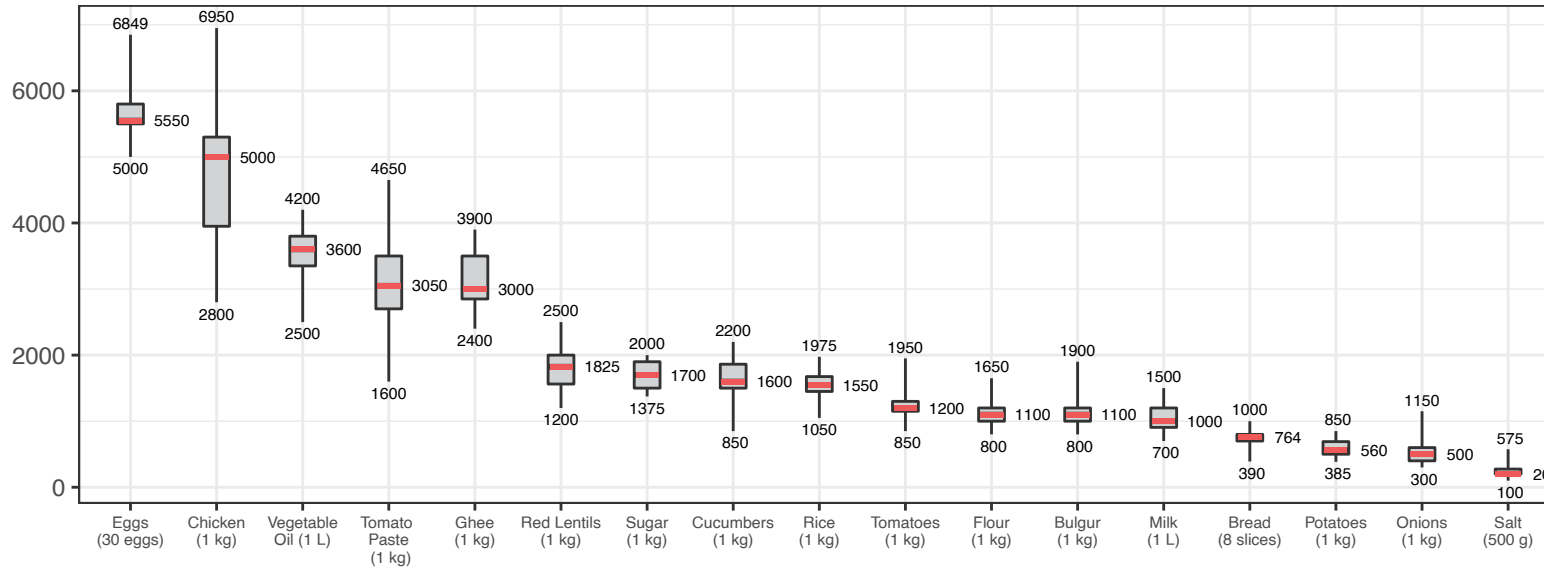
AVAILABILITY OF FACE MASKS

Sub-districts



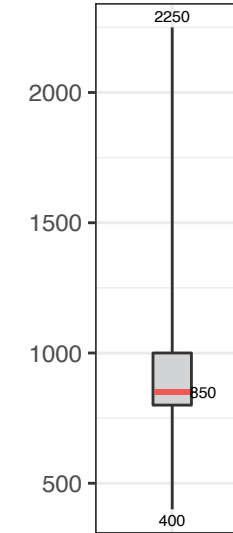
ASSESSED FOOD ITEMS

Syrian Pounds



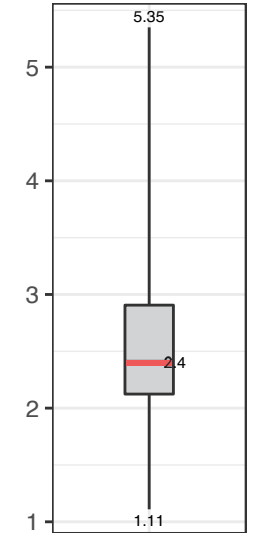
CELLPHONE DATA

Syrian Pounds



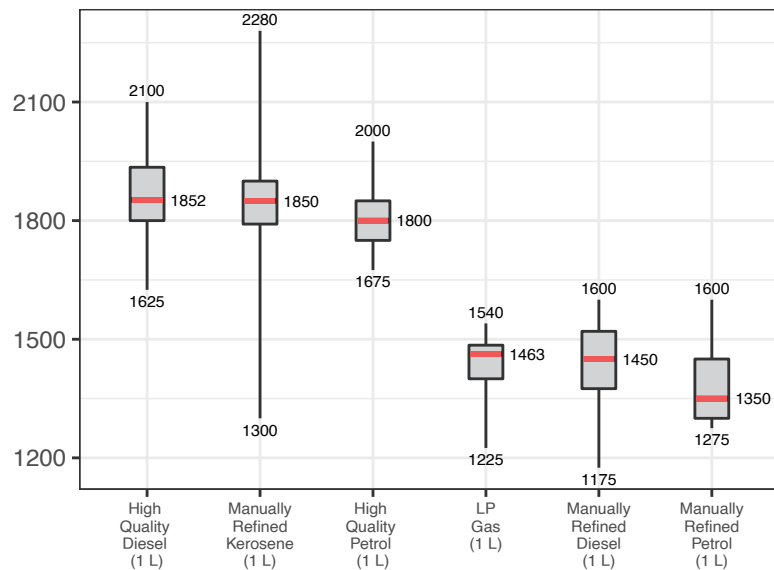
WATER TRUCKING

Syrian Pounds



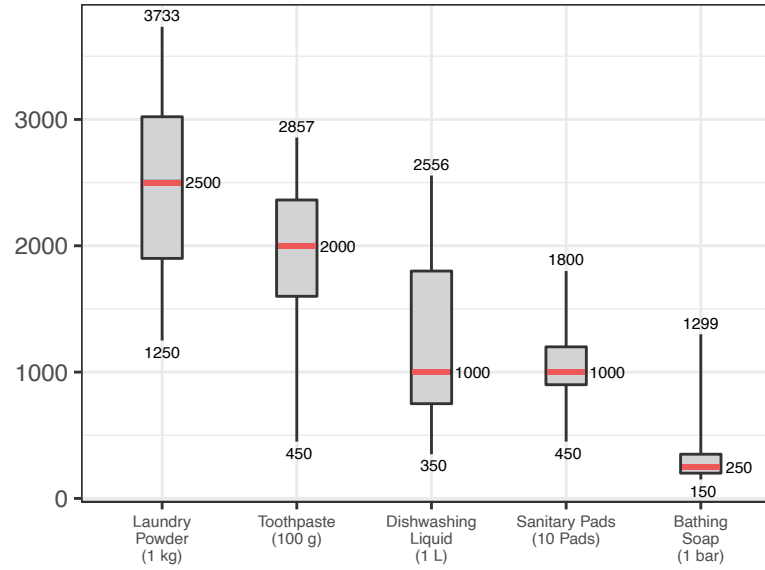
ASSESSED FUEL ITEMS

Syrian Pounds

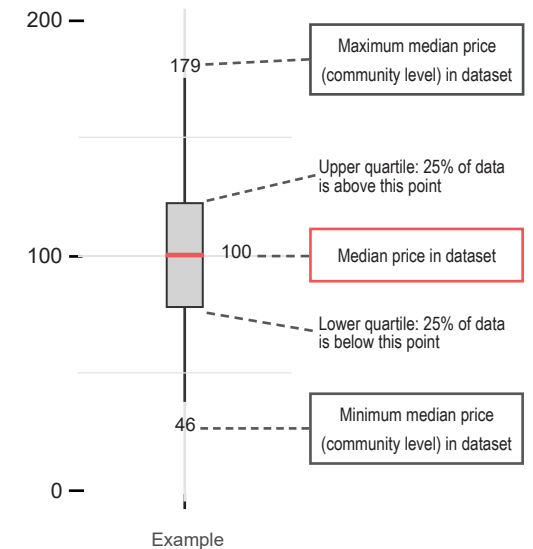


ASSESSED HYGIENE ITEMS

Syrian Pounds



READING BOXPLOTS



METHODOLOGY

In order to be included in the Syria Market Monitoring Exercise, markets must be permanent in nature, large enough to support at least two wholesalers, and diverse enough to provide a sufficient variety of goods and commodities. Additionally, the shops surveyed within each market must be housed in permanent structures and must sell certain items to be eligible for inclusion. Participating organisations train their enumerators on the Market Monitoring methodology and data collection tools using standard training materials developed by REACH. Each enumerator aims to assess three to five shops of each type in the main market in their assigned community/ neighbourhood, using surveys to collect information about the cheapest prices of each item and whether there are any barriers in the supply chain. In sub-districts where direct surveying by enumerators is not possible, data collection is conducted remotely through key informants such as shop owners, suppliers and consumers. A survey form is deployed on KoBo each month to capture price and stock information from different types of establishments, including grocery stores, fuel traders, currency exchange shops, water trucking services and mobile phone shops, among others. Nearly all participating partners submit their data to these KoBo forms, using the KoBoCollect Android app to upload data. A small number of partners, by prior permission, collect data using fully harmonised data collection tools deployed on other platforms, then submit their raw data to REACH for standardisation, compilation and cleaning.

Following data collection, REACH compiles and cleans all partners' data, normalising prices and cross-checking outliers. The cleaned data is then analysed by SMEB costs, components of the SMEB, and by commodities. These trends are observed at the sub-district-level and, when possible, at the community-level. Prices are divided into quartiles and boxplots are created

to assist CWG members in understanding the distribution of prices across the northeast and northwest of Syria. To illustrate local variations in prices and availability, REACH uses the collected data to map the price of the SMEB in each sub-district and adds illustrations of surrounding border crossings, with data sourced from the United Nations Office for the Coordination of Humanitarian Affairs (OCHA). In addition, each SMEB component costs and transport fuel prices are graphed to visualise trends over time.

The cleaned datasets are available on the [Humanitarian Data Exchange](#) website and the [REACH Resource Centre](#) and are distributed to all participating partners, as well as to interested clusters and the broader humanitarian community.

Calculating 'median cheapest price'

The regional figures are calculated by taking the median of the minimum-reported prices of a region's sub-districts. In turn, the sub-district medians are calculated using the Market Monitoring base-data.

Calculating Survival Minimum Expenditure Basket (SMEB) costs

The cost of a SMEB is calculated for each assessed sub-district by calculating the median cheapest price of each SMEB commodity in that sub-district, then multiplying these medians by the number of units that an average Syrian household requires to purchase in a month. The composition of the SMEB can be found on [page 1](#). SMEB vegetables include potatoes, tomatoes, onions, and cucumbers.

Calculating price trends over time

One month and six-month price changes and trends in this factsheet are calculated only with the comparable assessed communities of a sub-district with consistent coverage across months. On the other hand, in the dataset, medians are calculated taking all

assessed communities for the current month in consideration. Therefore, prices and percentage changes within the tables of this factsheet may slightly differ from the current month's dataset medians. In the narrative, both regional median SMEB values are shared; the SMEB value including all assessed communities that specific month, and the SMEB value only taking in consideration communities with consistent coverage since the previous month.

Changes to coverage

Given security and access constraints in the south of Syria, data collection has been unable to take place since July 2018. Escalation of conflict in October 2019 has resulted in limited coverage in northeast Syria in the months following the escalation.

Challenges and limitations

As the Syria Market Monitoring Exercise currently includes 26 partners based in 2 hubs, achieving a consistent approach is inherently challenging. Participating organisations are therefore requested to adopt harmonised data collection methodologies and tools to ensure that the data uploaded is as accurate as possible. Since this exercise collects data directly from vendors and relies on partner organisations for its wide coverage, Market Monitoring may sporadically lose coverage temporarily or for longer periods of time due to challenges in accessing locations or loss in the shared data collection capacity of the project. This impacts the ability to report on trends, as can be seen in the line graphs and 'NA' values in the tables.

ABOUT REACH

REACH Initiative facilitates the development of information tools and products that enhance the capacity of aid actors to make evidence-based decisions in emergency, recovery and development contexts. The methodologies used by REACH include primary data collection and in-depth analysis, and all activities are conducted through inter-agency aid coordination mechanisms. REACH is a joint initiative of IMPACT Initiatives, ACTED and the United Nations Institute for Training and Research - Operational Satellite Applications Programme (UNITAR-UNOSAT). For more information please visit our website:

www.reach-initiative.org. You can contact us directly at: geneva@reach-initiative.org and follow us on Twitter [@REACH_info](https://twitter.com/REACH_info)

ABOUT THE CASH WORKING GROUP

The Cash Working Group (CWG) was established in May 2014 to analyse the impact of the ongoing conflict on markets in Syria and guide the implementation of humanitarian cash and voucher programmes within those markets. REACH and the CWG have been partners on the Syria Market Monitoring Exercise since early 2015.

About REACH's COVID-19 response

As an initiative deployed in many vulnerable and crisis-affected countries, REACH is deeply concerned by the devastating impact the COVID-19 pandemic may have on the millions of affected people we seek to serve. REACH is currently working with Cash Working Groups and partners to scale up its programming in response to this pandemic, with the goal of identifying practical ways to inform humanitarian responses in the countries where we operate. COVID-19-relevant market monitoring and market assessments are a key area where REACH aims to leverage its existing expertise to help humanitarian actors understand the impact of changing restrictions on markets and trade. Updates regarding REACH's response to COVID-19 can be found in a [devoted thread](#) on the REACH website. Contact geneva@impact-initiatives.org for further information.