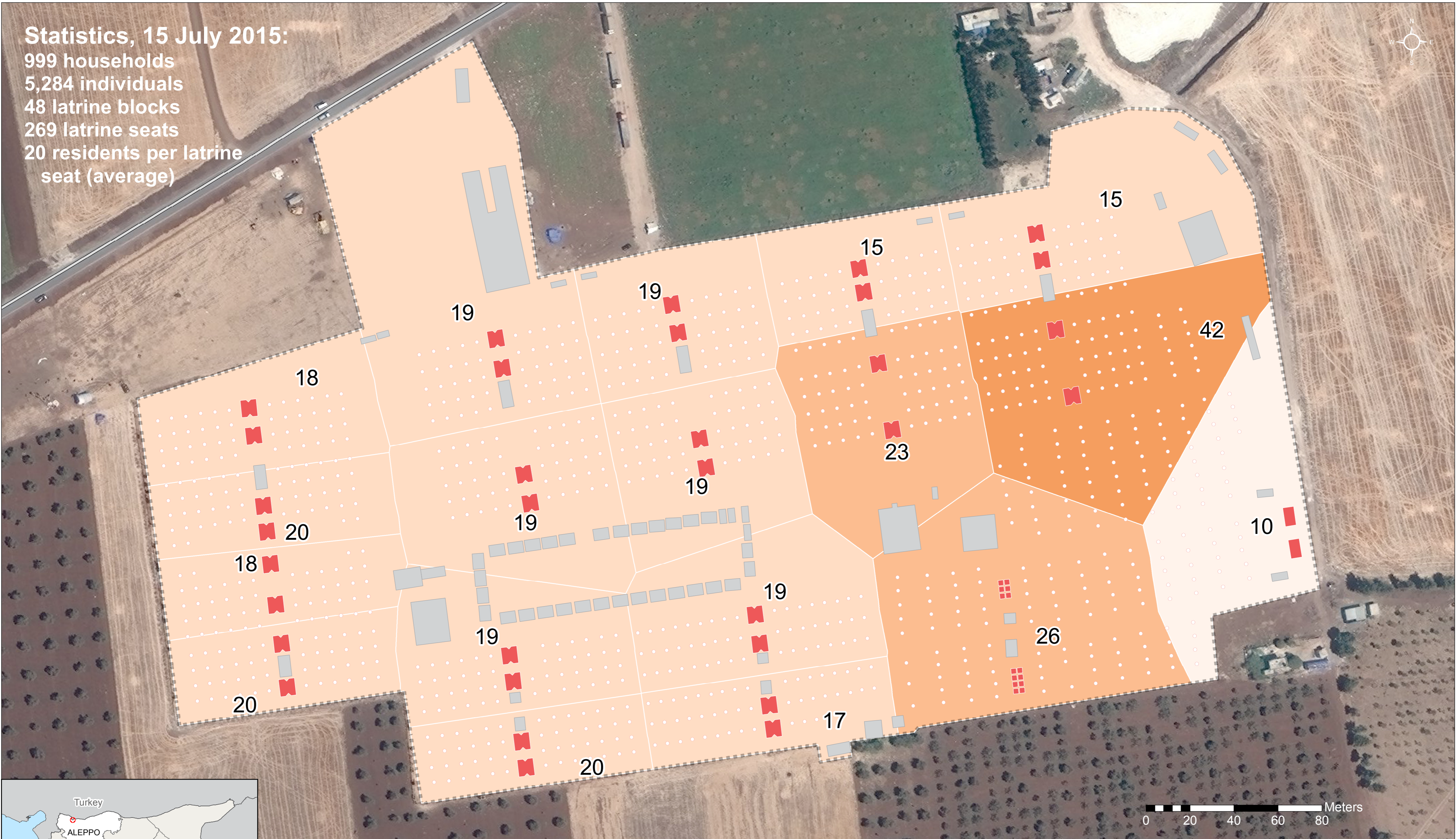


Statistics, 15 July 2015:

999 households
5,284 individuals
48 latrine blocks
269 latrine seats
20 residents per latrine seat (average)



Residents per Latrine Seat

Sphere standard:
Maximum of 20 residents per latrine seat

0-10 11-20 21-30 >30

Legend:

- Latrines (Red icon)
- Other structures (Grey icon)
- Settlement boundary (Dashed line)
- Shelters (Small circle icon)
- Roads (Line icon)

The polygons in the map above represent the **service areas** of each set of male/female latrines. A service area is defined as the area of land closer to that set of latrines than to any other. All else being equal, camp residents will prefer to use the latrine that is closest to their household.

Data sources:
Imagery: © UNOSAT, 19 July 2015
Administrative Boundaries: Common Operational Dataset
Roads: © OpenStreetMap contributors
Camp Boundary: UNOSAT
Building Digitization: REACH
Building Classification: REACH, NRC, World Vision
Population Figures: CCCM Cluster, ISIMM July 2015
Coordinate System: WGS 1984 UTM Zone 37N
File: REACH_SYR_SujjoLatrineServiceAreas_CCM_A2_14Sep2015_V2
Contact: mena.reach@impact-initiatives.org

Note: Data, designations and boundaries contained on this map are not warranted to be error-free and do not imply acceptance by the REACH partners, associates or donors mentioned on this map.