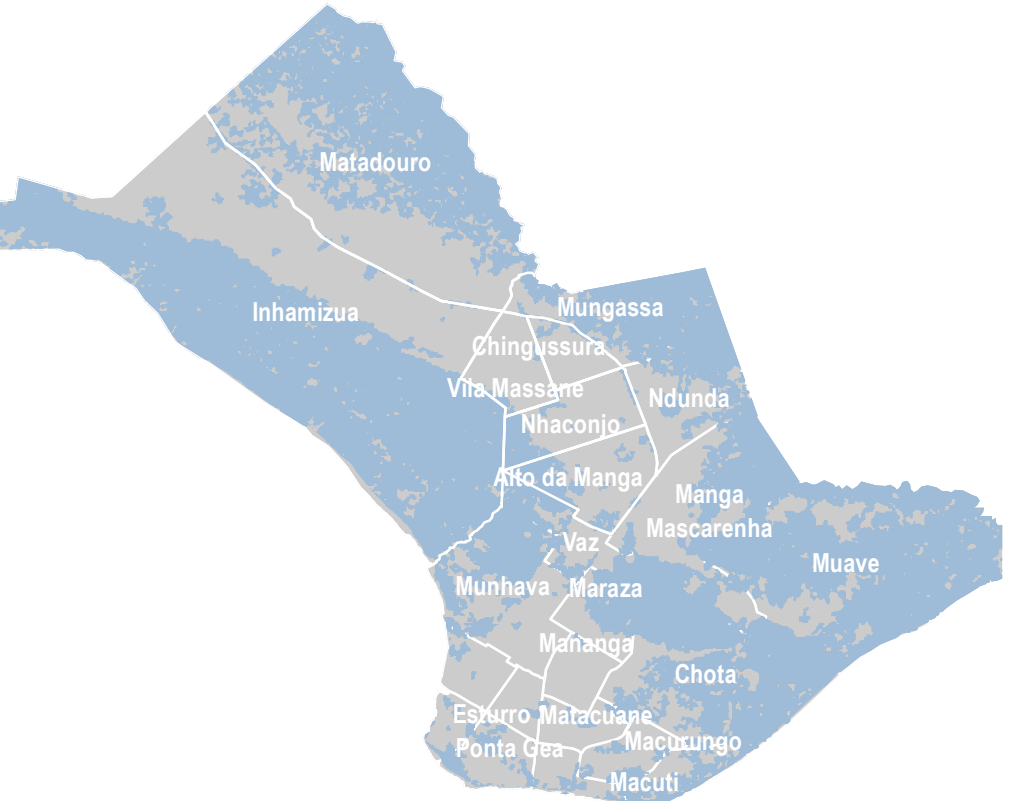
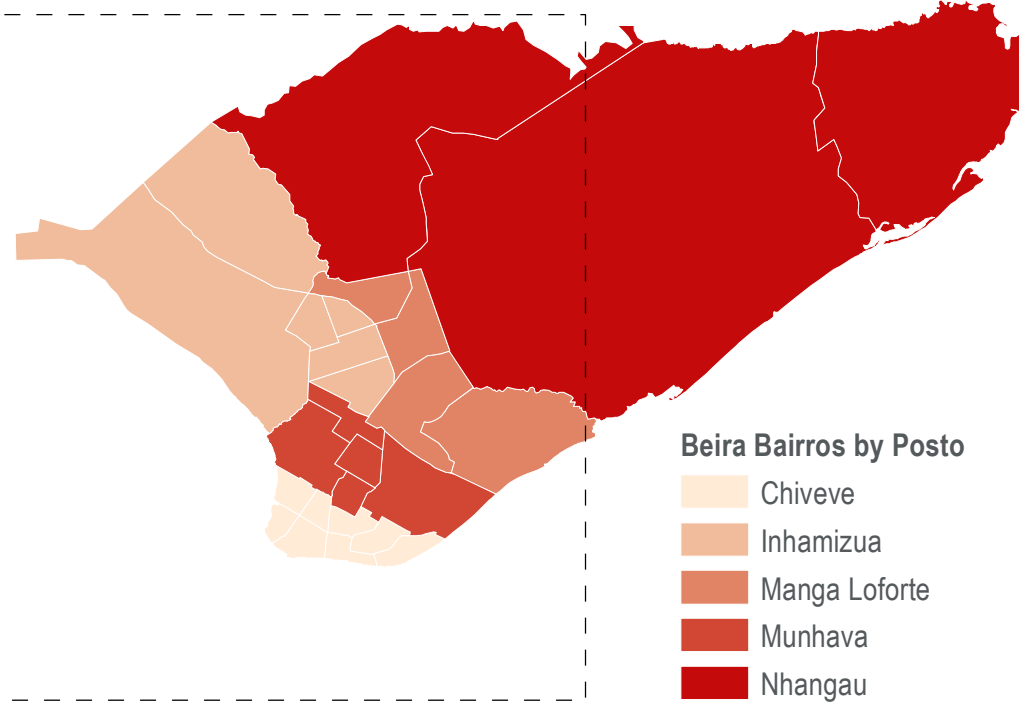
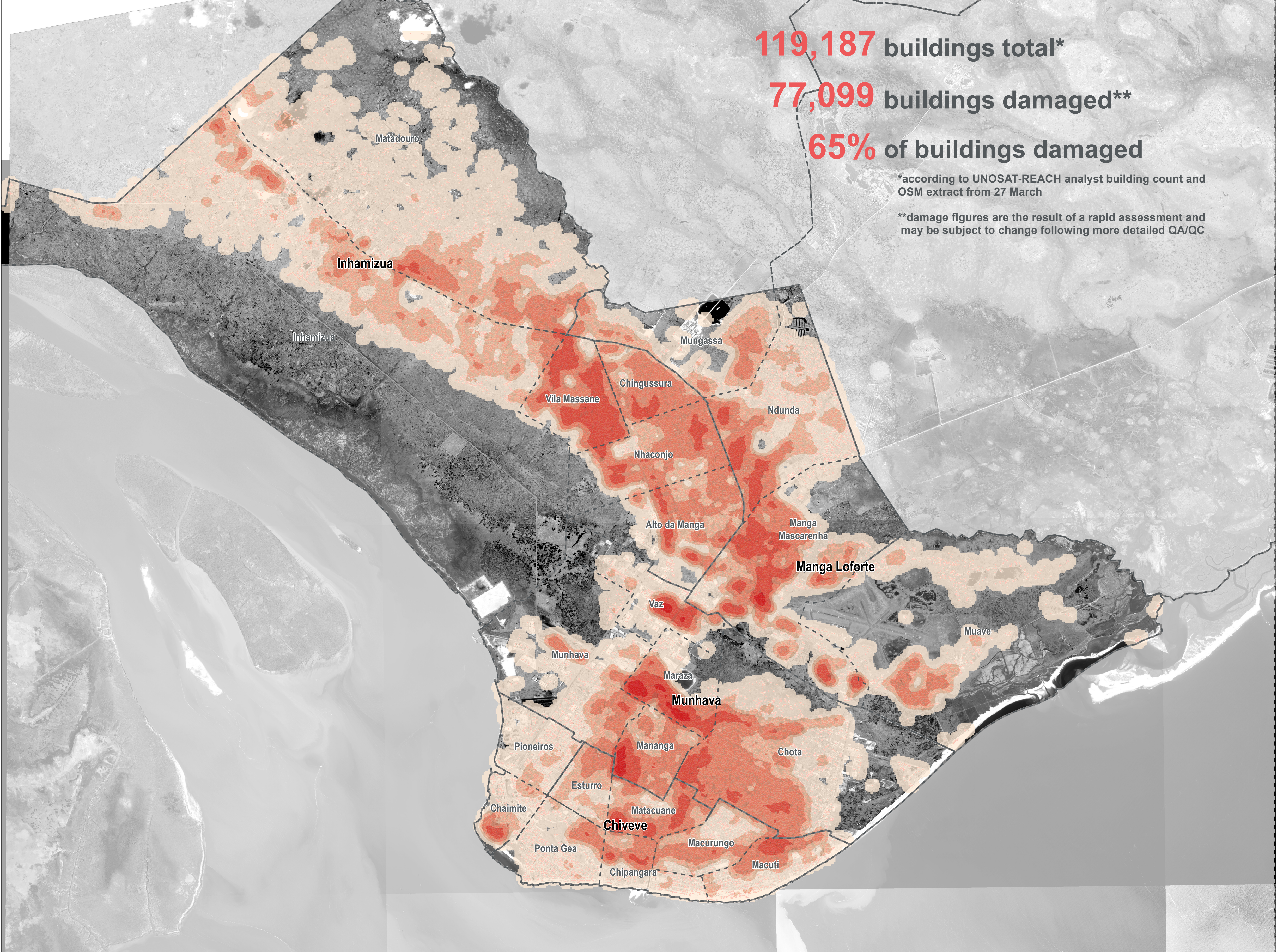


MOZAMBIQUE - Beira City

Neighbourhood Damage Assessment - As of 26 March 2019

For Humanitarian Purposes Only
Production date : 15 April 2019



Extent of standing water 19 March 2019

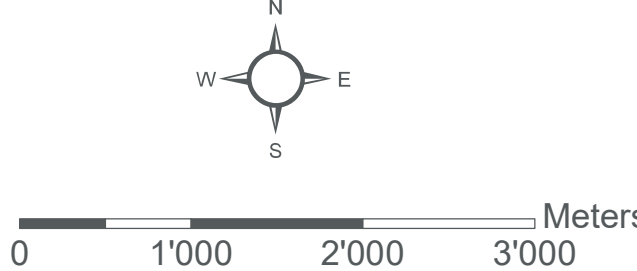
Data sources:
Damage sites - UNOSAT-REACH
Water extent - UNOSAT
Beira Bairros - INGC
Administrative Boundaries (0-3) - OCHA
Satellite Imagery Analysis: WorldView-2 from 26 March 2019
Copyright: ©DigitalGlobe 2019
Source: US Dept of State Humanitarian Information Unit, NextView License
Satellite Imagery Background: WorldView-1 from 29 March 2019
Copyright: ©DigitalGlobe 2019
Source: US Dept of State Humanitarian Information Unit, NextView License

Legend

- Damaged Buildings
- Bairros

Damage Density

- High
- Low



Coordinate System: GCS WGS 1984
File: MOZ_Map_Cyclonelda_BeiraCity_Damage_15APR2019
Contact: reach.mapping@impact-initiatives.org

Note: Data, designations and boundaries contained on this map are not warranted to be error-free and do not imply acceptance by the REACH partners, associated, donors mentioned on this map.



Funded by
European Union
Humanitarian Aid

REACH
An initiative of
IMPACT Initiatives
ACTED and UNOSAT