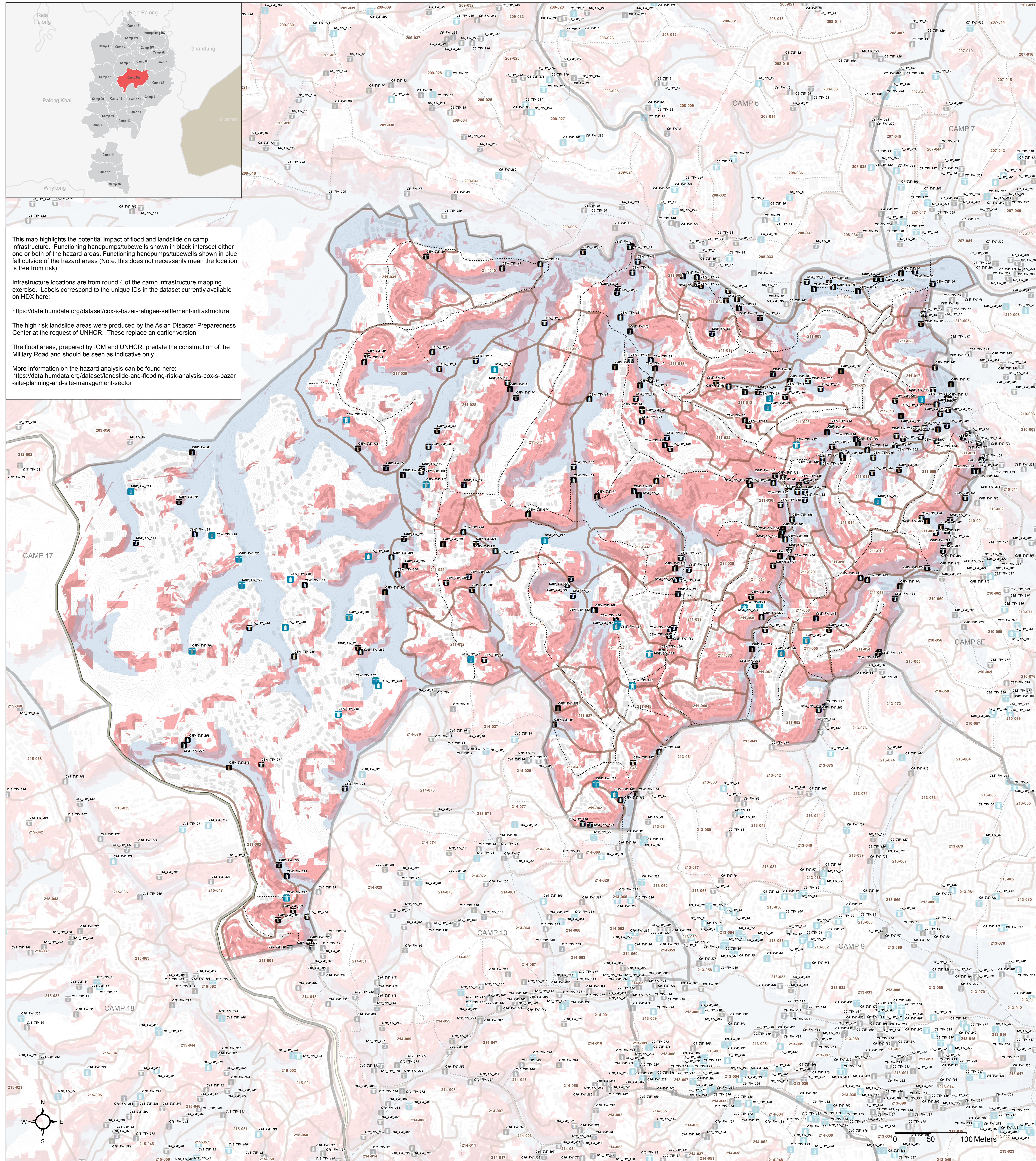


BANGLADESH - Rohingya Refugee Crisis - Cox's Bazar District

Camp 8W - Potential Risk to Handpumps and Tubewells

For Humanitarian Purposes Only
Production date: 19 March 2018



- Handpumps / Tubewells**
- Functioning Handpump / Tubewell Not Within Hazard Area
 - Functioning Handpump / Tubewell Within Hazard Area
- High Risk Landslide Areas**
- Unstable / Critical Unstable
 - Nearly Unstable / Relatively Unstable
 - Flood Area
 - Elevation Contours (1m)
- Other Features**
- Camp Boundaries
 - Majhee Blocks
 - Shelter Footprints
 - Highway
 - Military Road / Vehicle Road
 - Main Path
 - Footpath

Data Sources:
Camp Infrastructure - REACH
Landslide Risk - ADPC / UNHCR
Flood Areas - ADPC / UNHCR / IOM
Elevation Contours - IOM
Shelter Footprints - REACH / UNOSAT
Roads / Footpaths - ISCG / REACH
Camp / Majhee / Admin Boundaries - ISCG / IOM / OCHA

Coordinate System: WGS 1984 UTM Zone 46N
Projection: Transverse Mercator
Contact: reach.mapping@impact-initiatives.org

Note: Data, designations and boundaries contained on this map are not warranted to be error-free and do not imply acceptance by the REACH partners, associates, donors mentioned on this map.

