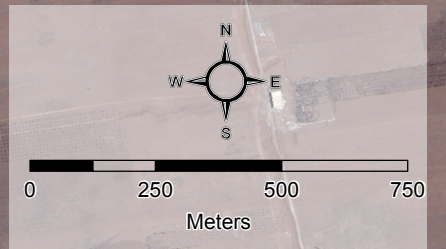
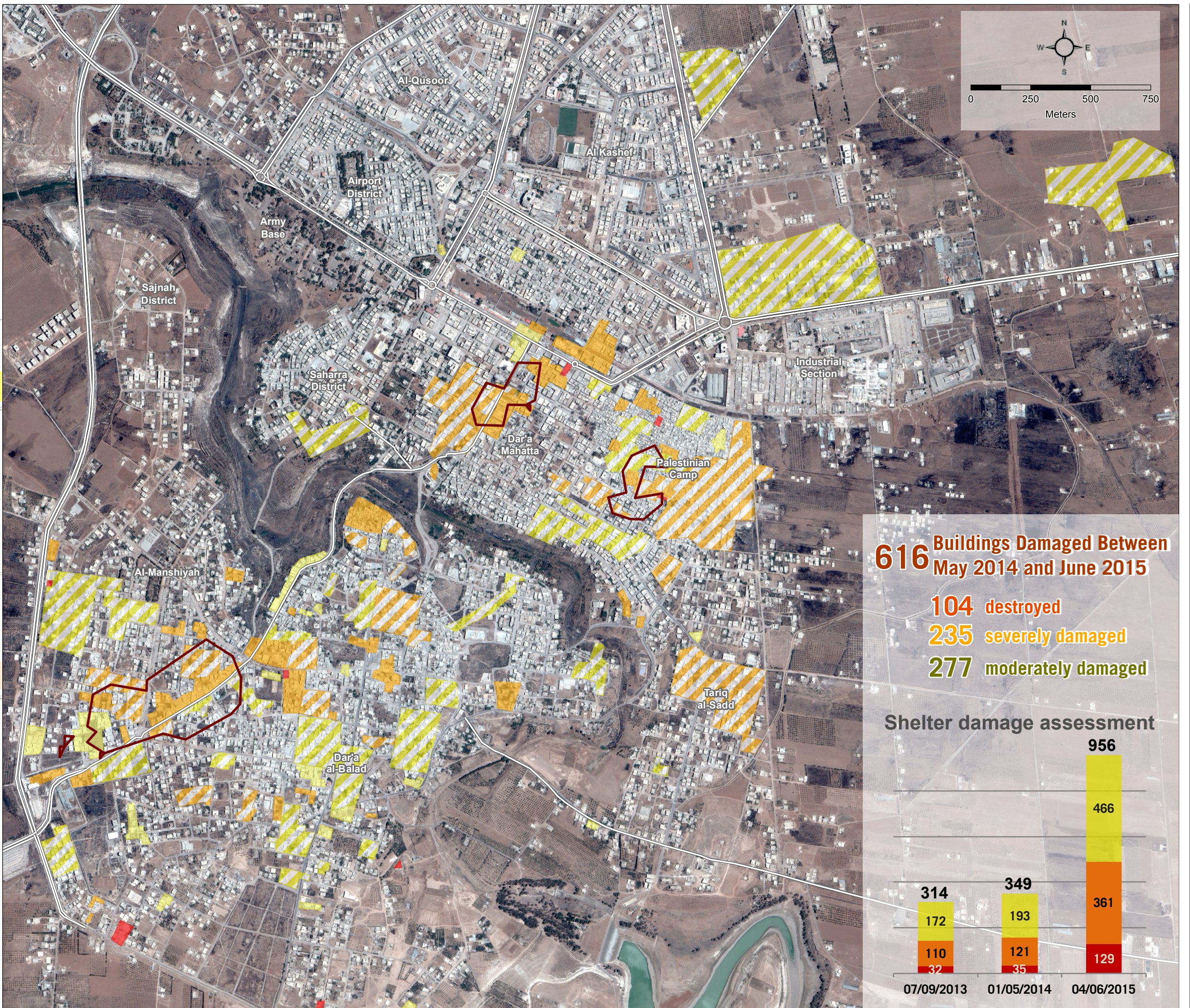
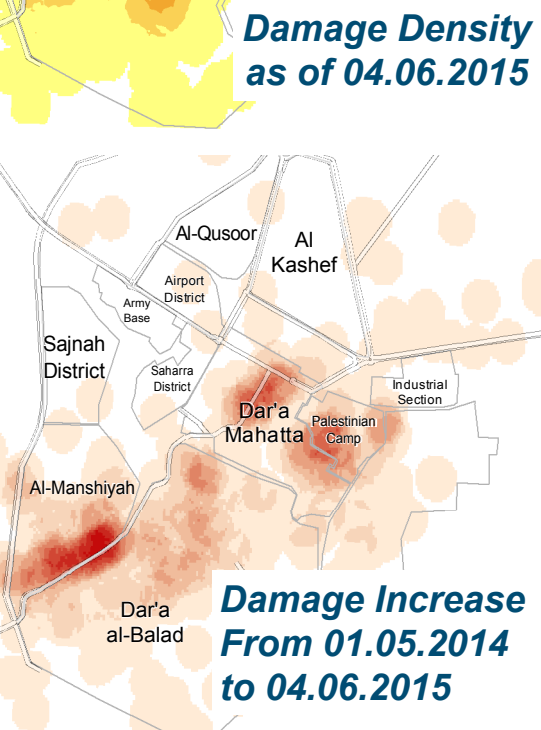
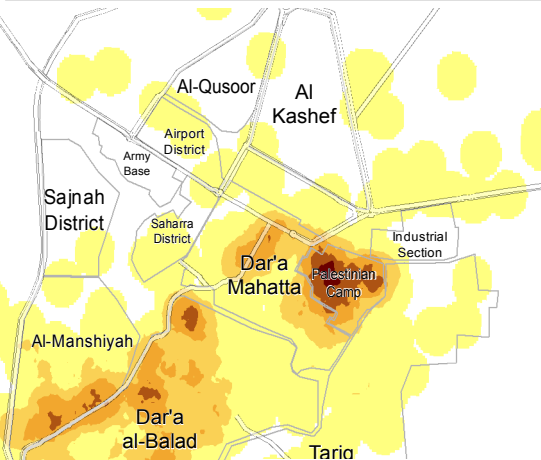


Syria - City of Daraa Shelter Damage Assessment as of 4th June 2015

For Authorized Distribution Only - For Humanitarian Purposes Only
Production Date: 25th June 2015

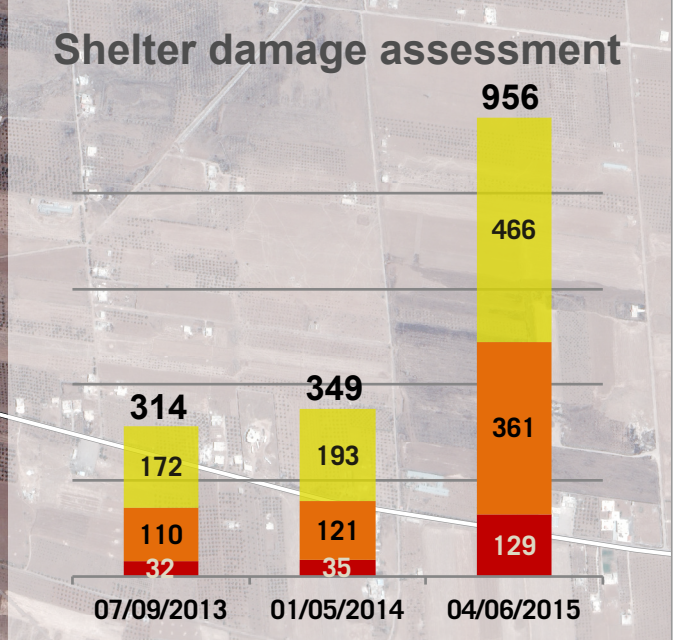


- Damage Zones**
- Destroyed
 - Severe Damage
 - Moderate Damage
 - Severe Damage, Low Density
 - Moderate Damage, Low Density
 - + Main Areas of Damage Increase



616 Buildings Damaged Between May 2014 and June 2015

- 104** destroyed
- 235** severely damaged
- 277** moderately damaged



Satellite Data: Pléiades - Date: 04.06.2015 - Resolution: 50 cm
Copyright CNES 2015 - Distribution Astrium Service / SPOT Image
Shelter Damage Assessment Data: UNOSAT/REACH
Projection: WGS 1984 UTM zone 37N
File: REACH_SYR_Map_Daraa_ASMT_SDAcity_25JUN15_A3
Contact: reach.mapping@impact-initiatives.org

Note: Data, designations and boundaries contained in this map are not warranted to be error-free and do not imply acceptance by the REACH partners, donors and associated persons mentioned in this map.