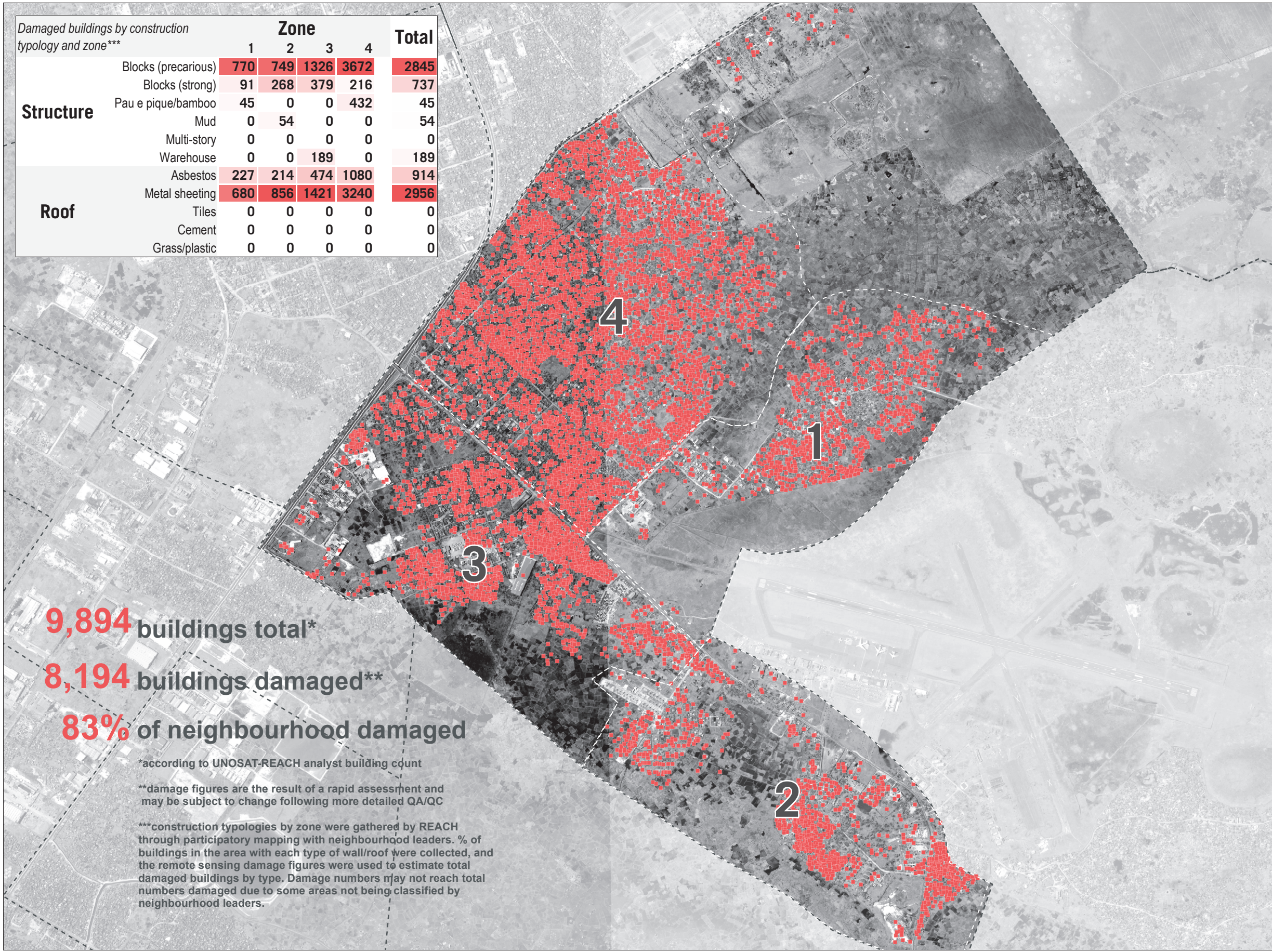
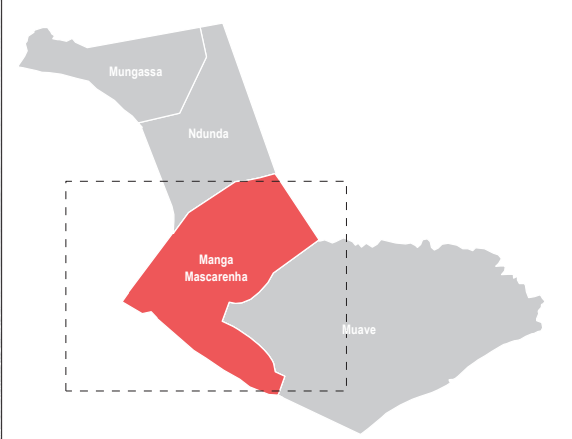
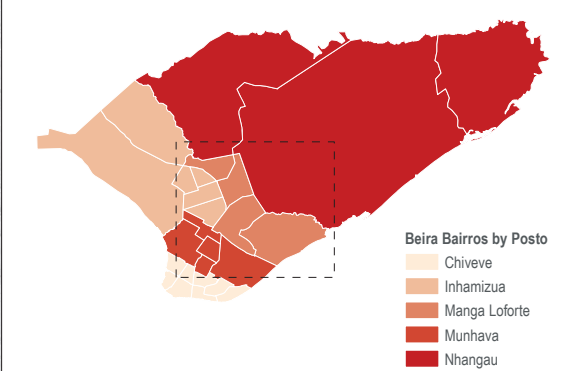


Damaged buildings by construction typology and zone***	Zone				Total
	1	2	3	4	
Structure					
Blocks (precarious)	770	749	1326	3672	2845
Blocks (strong)	91	268	379	216	737
Pau e pique/bamboo	45	0	0	432	45
Mud	0	54	0	0	54
Multi-story	0	0	0	0	0
Warehouse	0	0	189	0	189
Roof					
Asbestos	227	214	474	1080	914
Metal sheeting	680	856	1421	3240	2956
Tiles	0	0	0	0	0
Cement	0	0	0	0	0
Grass/plastic	0	0	0	0	0



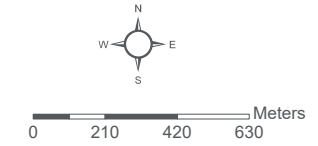
9,894 buildings total*
8,194 buildings damaged**
83% of neighbourhood damaged

*according to UNOSAT-REACH analyst building count
**damage figures are the result of a rapid assessment and may be subject to change following more detailed QA/QC
***construction typologies by zone were gathered by REACH through participatory mapping with neighbourhood leaders. % of buildings in the area with each type of wall/roof were collected, and the remote sensing damage figures were used to estimate total damaged buildings by type. Damage numbers may not reach total numbers damaged due to some areas not being classified by neighbourhood leaders.



Data sources:
Damage sites - UNOSAT-REACH
Beira Bairros - INGC
Bairros Delineation - REACH
Administrative Boundaries (0-3) - OCHA
Satellite Imagery: WorldView-2 from 26 March 2019
Copyright: ©DigitalGlobe 2019
Source: US Dept of State Humanitarian Information Unit, NextView License

Legend
■ Damaged Buildings
--- Bairros



Coordinate System: GCS WGS 1984
File: MOZ_Map_CycloneIdaj_Beira_DamageByType_MangaMascarenha_30APR2019
Contact: reach.mapping@impact-initiatives.org

Note: Data, designations and boundaries contained on this map are not warranted to be error-free and do not imply acceptance by the REACH partners, associated, donors mentioned on this map.



Funded by
European Union
Civil Protection and
Humanitarian Aid

An initiative of
IMPACT Initiatives
ACTED and UNOSAT
REACH