

Yemen Joint Market Monitoring Initiative

April 2021 Situation Overview

Governorates: 16
Districts: 56
Total key informants (KIs): 215



WASH Cluster
Water Sanitation Hygiene

CMWG

Intersector Cash
and Markets
Working Group

REACH

Informing
more effective
humanitarian action

Introduction

The Yemen Joint Market Monitoring Initiative (JMMI) was launched by REACH in collaboration with the Water, Sanitation, and Hygiene (WASH) Cluster and the Cash and Market Working Group (CMWG) to support humanitarian actors with the harmonization of price monitoring among all cash actors in Yemen. The JMMI incorporates information on market systems including price levels and supply chains. The basket of goods to be assessed includes ten non-food items (NFIs), such as fuel, water, and hygiene products, reflecting the programmatic areas of the WASH Cluster. The JMMI tracks all components of the WASH and Food Survival Minimum Expenditure Basket (SMEB) as well as other food and non-food items. In light of the current COVID-19 pandemic, REACH has adapted the JMMI to begin assessing the potential impact of the pandemic on markets and on respondents' businesses.

Methodology

Data was collected through interviews with vendor key informants (KIs), selected by partner organisations from markets of various sizes in both urban and rural areas. Following data collection, REACH compiles, cleans and analyzes all data, through detailed follow-ups with partners. Findings are **indicative** for the assessed locations and time frame in which the data was collected. From April to September 2020, data for the JMMI was collected on a bi-weekly basis to better track disruptions caused by COVID-19. COVID-specific JMMI factsheets were produced bi-weekly, and a more comprehensive situation overview using data from both factsheets was produced monthly. After discussion with the CMWG, REACH resumed data collection on a monthly basis in September, and resumed producing one monthly situation overview. Please refer to the [appendix](#) for additional methodological details.

JMMI monthly figures

Data collection **4 April - 8 April**

15 Participating partners
16 Governorates assessed
56 Districts assessed
215 Vendor KIs surveyed

Assessed items	March 2021 prices in YER	April 2021 prices in YER	Change (from March 2021)
Full SMEB* (dry beans)	63800	69178	8.4%
WASH SMEB**	15775	15658	-0.7%
Soap (100g)	200	200	0.0%
Laundry powder (100g)	140	142	1.4%
Sanitary napkins (10 Pack)	600	600	0.0%
Water trucking (1m³)	2500	2450	-2.0%
Petrol (1L)	575	600	4.3%
Diesel (1L)	700	650	-7.1%
Bottled water (0.75L)	150	150	0.0%
Treated water (10L)	100	110	10.0%
Bleach (1L)	845	867	2.6%
Cooking gas (1cylinder)	5800	6000	3.4%
Food SMEB (dry beans)^	48025	53520	11.4%
Food SMEB (canned beans)§	51125	57020	11.5%
Wheat flour (1 kg)	380	440	15.8%
Rice (1 kg)	800	900	12.5%
Dry kidney beans (1 kg)	950	1000	5.3%
Canned kidney beans (15 oz can)	350	375	7.1%
Lentils (1 kg)	800	800	0.0%
Vegetable oil (1L)	1100	1155	5.0%
Sugar (1 kg)	450	460	2.2%
Salt (1 kg)	100	130	30.0%
Potatoes (1 kg)	500	500	0.0%
Onions (1 kg)	500	400	-20.0%

* Includes WASH and food SMEB; excludes cooking gas, NFI/Shelter and Services.

** Contains soap (1.05 kg), laundry powder (2 kg), sanitary napkins (50 units), and water (3.15 m³).

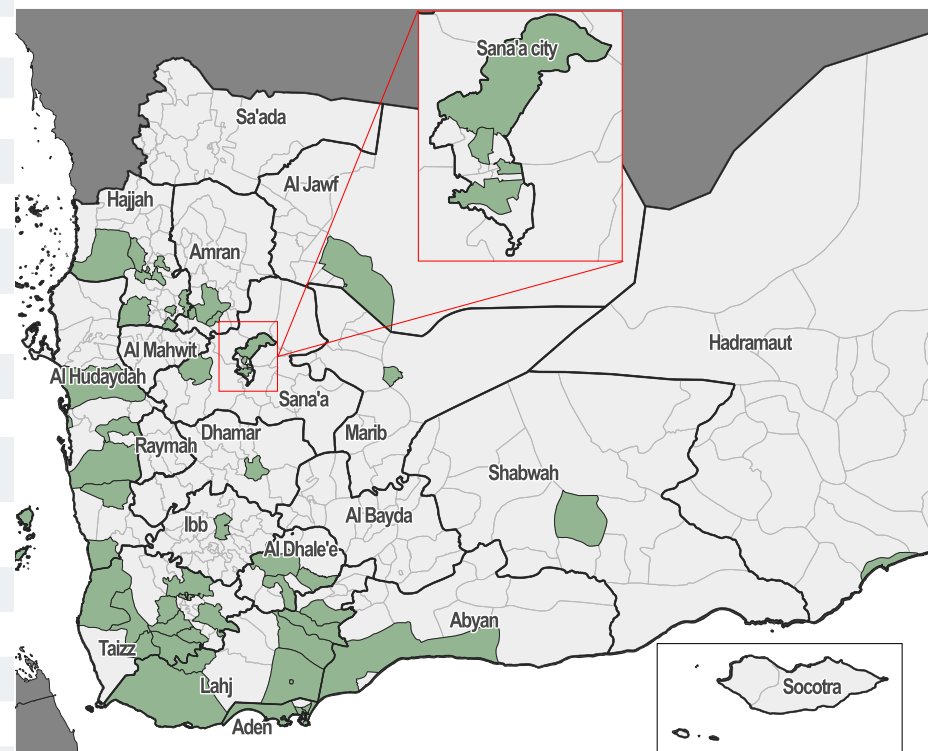
Sanitary napkins' units were changed from 20 to 50 based on CMWG's September SMEB revision.

^ Contains wheat flour (75 kg), dry beans (10 kg), vegetable oil (8 L), sugar (2.5 kg), salt (1 kg)

§ Contains wheat flour (75 kg), canned beans (36 cans), vegetable oil (8 L), sugar (2.5 kg), salt (1 kg)

Key findings

- Overall, exchange rates have decreased between March 2021 and April 2021, yet increased between March 2020 and April 2021: The median national exchange rate remained stable with 597 Yemeni Riyal (YER) to one US dollar (USD). The lowest exchange rate was recorded in Sana'a (595 YER to 1 USD). The highest exchange rate was recorded in Shabwah (900 YER to 1 USD), followed by Aden governorate (863 YER to 1 USD).
- The average reported restocking time decreased, particularly for food items, after an increase was observed in the last round of data collection in March.
- The reported number of business closures in the last 2 weeks within a 2 minute walk from KIs' stalls increased slightly to reach 82 markets compared to last round in March with a total of 78 businesses reported to be closed around the assessed markets.
- Price inflation remains the most commonly reported constraint faced by the assessed vendors when obtaining fuel, WASH items, food items, and water trucking services.
- The food SMEB cost (with dry beans) was found to have increased by 11.4% since the last round of data collection in March, and the WASH SMEB cost decreased by 0.7% since last round, contributing to a 8.4% increase in the overall SMEB cost.
- Overall, 28% of KIs reported that their supply routes changed in a way harmful to their business in the 30



Exchange Rate

250
▶ 0.0%
USD/YER
Official

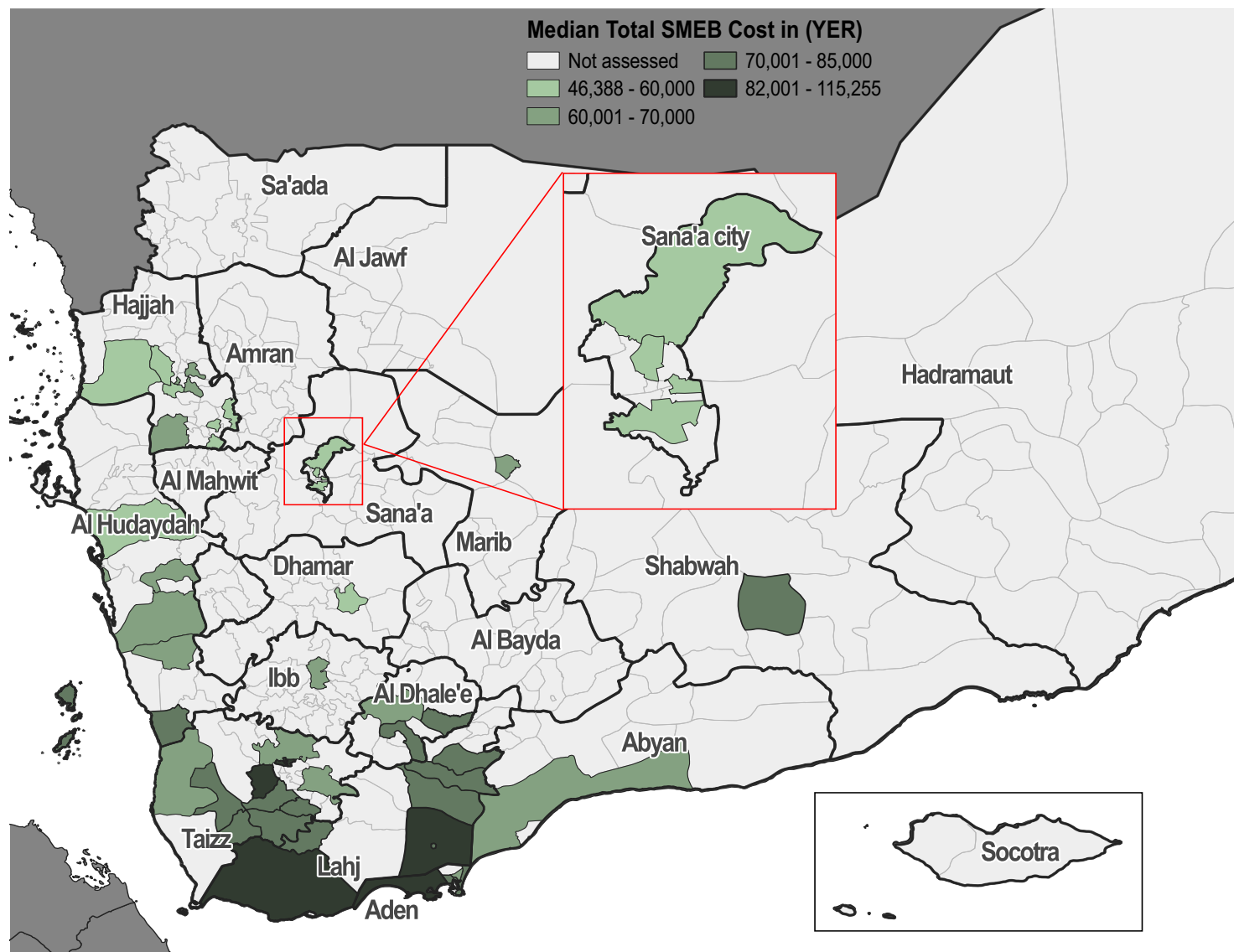
597
▼ 0.5%
USD/YER
Parallel market (in DFA)
rate April 2021

600
USD/YER
Parallel Market
rate (in DFA)
March 2021

850
▶ 0.0%
USD/YER
Parallel market (in IRG)
rate April 2021

850
USD/YER
Parallel Market rate
(in IRG)
March 2021

Total SMEB prices (4-8 April 2021)*, ^



*Total SMEB cost in the legend represents the calculated food basket cost with dry beans.

^ Red outlines over districts indicate the districts for which outliers were recorded.

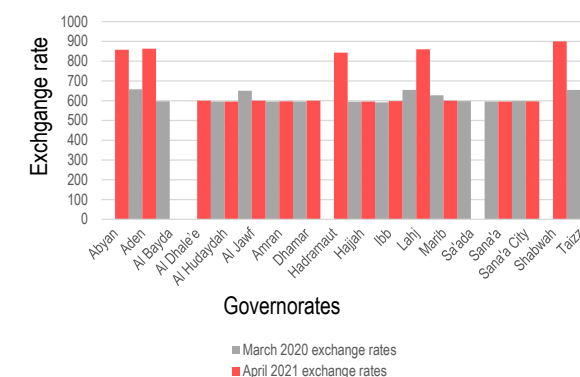
Exchange rate (YER/USD)*

Governorate	March 2020 [^]	March 2021	April 2021
Abyan	NA	(885)	(858)
Aden	658	895 (894)	863
Al Bayda	596	NA	NA
Al Dhale'e	NA	600 (895)	600 (855)
Al Hudaydah	595	602 (900)	595 (728)
Al Jawf	650	600	600
Amran	595	600	597
Dhamar	595	600	600
Hadramaut	NA	912 (897)	843
Hajjah	594	600	595
Ibb	592	600	598
Lahj	654	886 (890)	860
Marib	628	580 (890)	600
Sa'ada	598	NA	NA
Sana'a	595	600	595
Sana'a City	598 (628)	600	597
Shabwah	NA	700 (800)	900
Taizz	654	885	850

*New banknote exchange rates / Exchange rate for the new currency released last year is in parenthesis.

[^]March was chosen as a baseline to assess the effect of COVID-19 on exchange rates.

Exchange rate in March 2020 and April 2021 (YER/USD)*



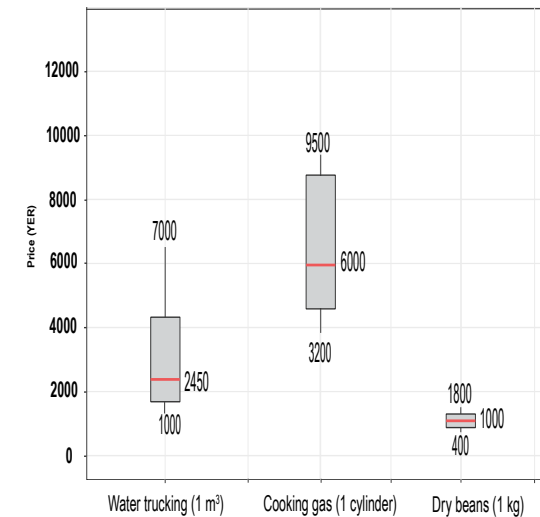
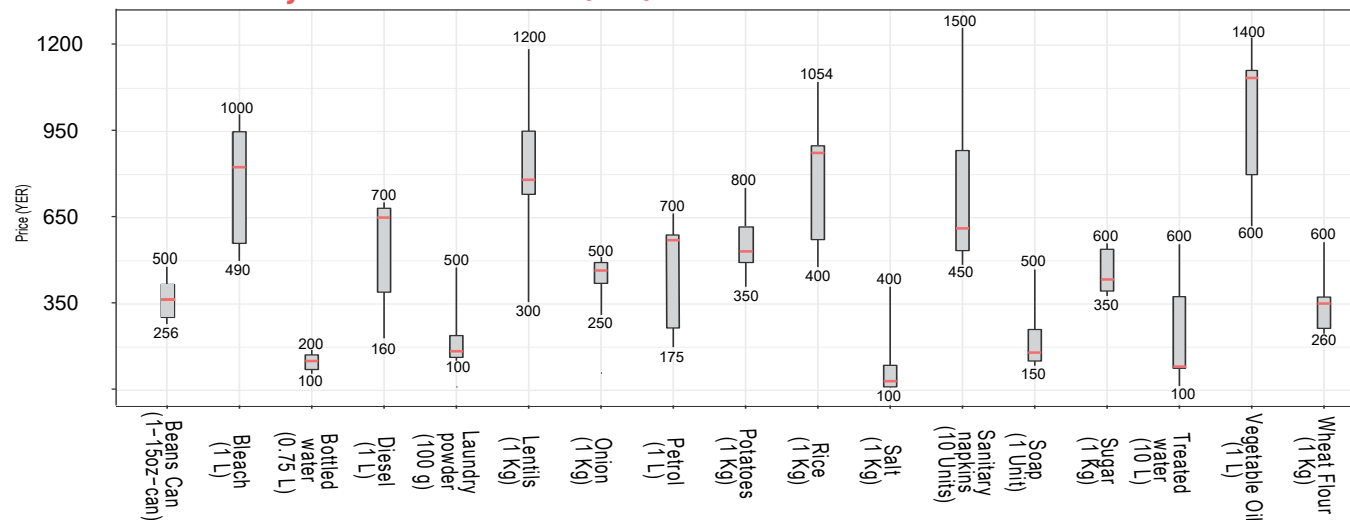
*Governorate labels point to two bars indicating March 2020 base values and April 2021 values. Gaps between bars indicates that no exchange rate value was recorded in this governorate.

Price per key item, per governorate (YER)*

Governorate	Petrol (1L)	Diesel (1L)	Cooking gas (1 cylinder)	Bottled water (0.75L)	Treated water (10L)	Bleach (1L)	Soap (100g)	Laundry powder (100g)	Sanitary napkins (10 units)	Water trucking (1m³)	WASH SMEB	Wheat flour (1Kg)	Rice (1Kg)	Beans dry (1Kg)	Beans cans (15oz)	Lentils (1 Kg)	Vegetable oil (1L)	Sugar (1Kg)	Salt (1Kg)	Potatoes (1Kg)	Onions (1 Kg)	Food SMEB (Dry Beans)	Food SMEB (Canned beans)
Abyan	600	650	4500	100	100	1000	263	100	700	2000	14562	450	1000	1000	410	NA	1200	600	100	500	500	54950	59710
Aden	500	620	7000	200	150	900	222	140	700	3200	18711	468	1035	900	450	1200	1225	500	200	400	400	55350	62550
Al Dhale'e	600	650	6850	128	150	675	200	189	700	5000	25120	440	1054	1000	380	800	1311	440	125	800	500	54709	58371
Al Hudaydah	600	690	9500	150	100	490	150	130	500	7000	28725	340	500	400	300	400	600	400	150	400	400	35450	42250
Al Jawf	600	650	4000	200	NA	750	250	150	1500	2000	19425	265	420	NA	350	NA	1350	500	120	500	500	NA	44645
Amran	NA	NA	NA	120	120	700	180	120	500	1525	11594	350	600	NA	300	650	1063	400	150	400	300	NA	46704
Dhamar	650	650	8000	150	600	800	163	120	650	1500	12087	260	1000	1000	300	750	1500	350	100	350	350	42475	43275
Hadramaut	500	500	NA	150	200	1000	400	300	900	NA	NA	600	1000	NA	500	900	1500	500	300	400	500	NA	76550
Hajjah	700	650	9000	150	100	900	150	130	500	2500	14550	300	800	1000	300	800	1000	400	100	500	450	41600	42400
Ibb	650	700	6000	150	100	850	200	150	600	3000	17550	400	600	1000	265	NA	600	550	100	400	350	46275	45815
Lahj	520	650	8000	163	150	950	218	148	750	2000	15299	455	1050	1650	445	1200	1388	500	150	500	400	63129	62649
Marib	175	160	3200	100	100	950	230	200	850	1000	13815	420	985	1400	450	1000	1100	600	150	500	450	55950	58150
Sana'a	NA	NA	5000	120	100	750	187	120	450	11000	41264	350	500	NA	300	600	1100	400	350	400	300	NA	47200
Sana'a City	600	700	4700	100	120	600	150	120	550	1625	11844	300	400	600	280	700	850	400	400	350	250	36700	40780
Shabwah	500	600	4500	100	150	800	500	500	500	2600	25940	500	500	400	450	300	700	450	150	375	450	48375	60575
Taizz	623	700	6000	200	100	1000	200	167	700	3000	18390	467	1000	1800	417	1000	1400	500	132	550	400	65607	62619
National median price	600	650	6000	150	110	867	200	142	600	2450	15658	440	900	1000	375	800	1155	460	130	500	400	53520	57020

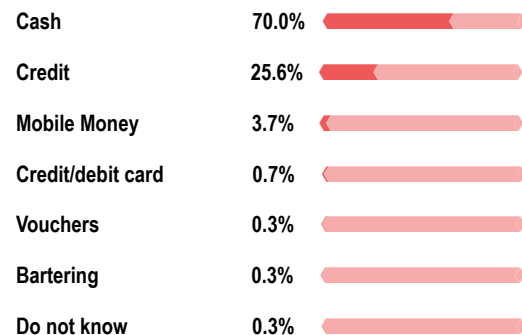
*Darker color strokes indicate high outliers for each commodity, lighter color strokes indicate the low outliers of each commodity.

Price distribution of key items across Yemen (YER)



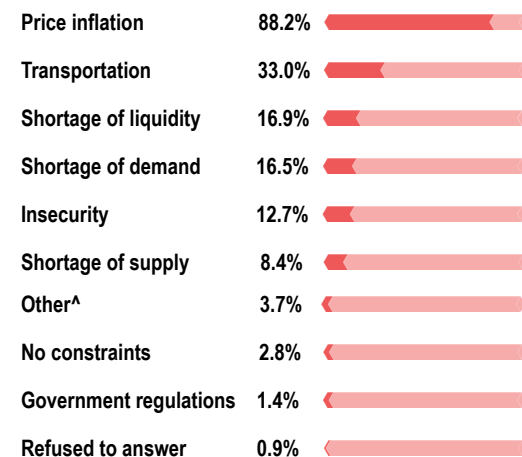
WASH SMEB*

WASH vendor KIs reported accepting the following payment modalities*



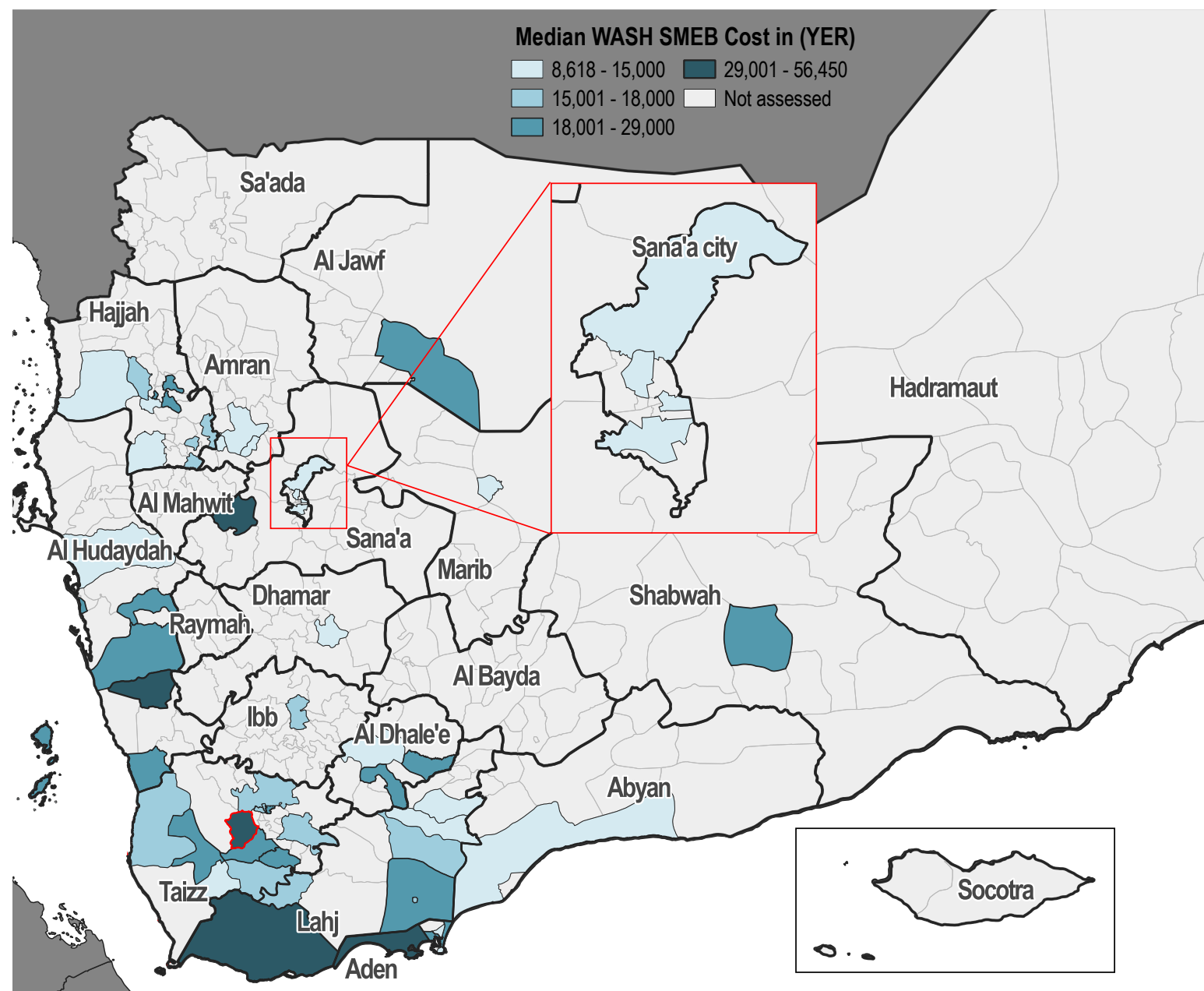
*Values do not add up to 100% as vendor KIs were allowed to select multiple options.

Most commonly reported constraints, by % of WASH vendor KIs*



*Values do not add up to 100% as vendor KIs were allowed to select multiple options.

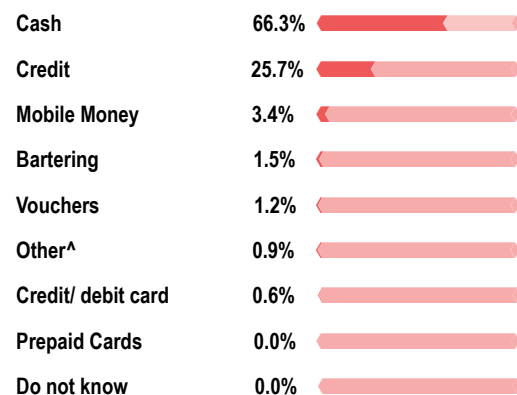
[^]Includes increased currency fluctuations, loss of vendors in the area, and additional fees.



*Red outlines over districts indicate the districts for which outliers were recorded.

Food SMEB*

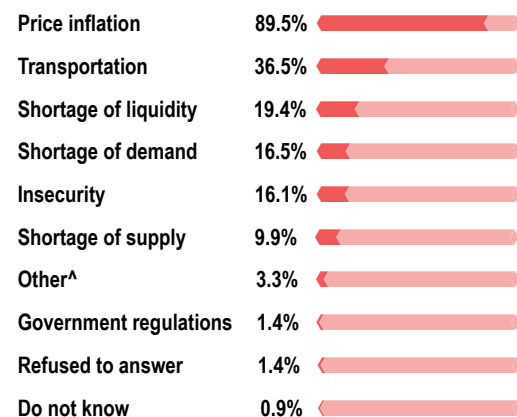
Food vendor KIs reported accepting the following payment modalities*



*Values do not add up to 100% as vendor KIs were allowed to select multiple options.

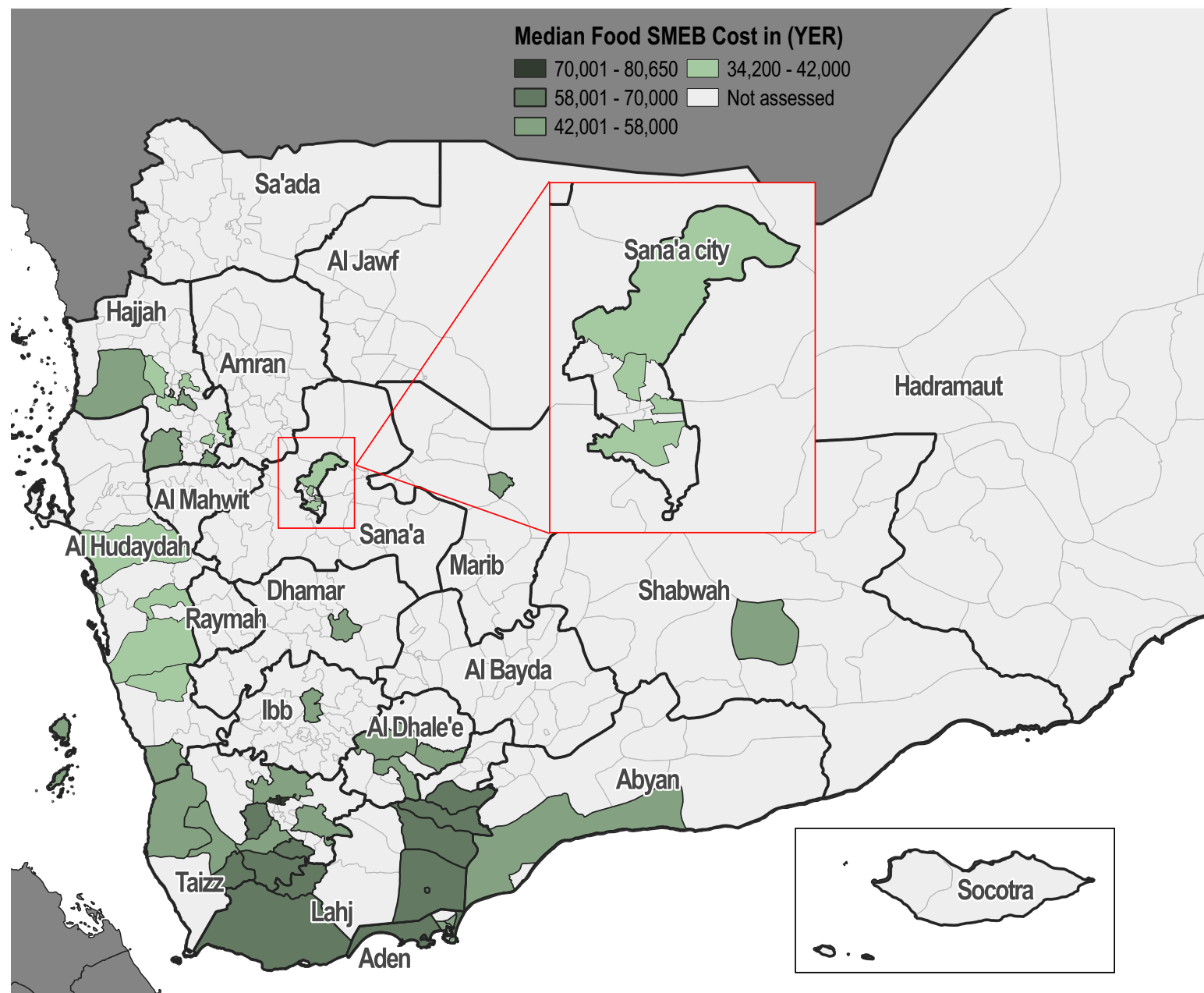
^Includes bank transfers.

Most commonly reported constraints, by % of food vendor KIs*



*Values do not add up to 100% as vendor KIs were allowed to select multiple options.

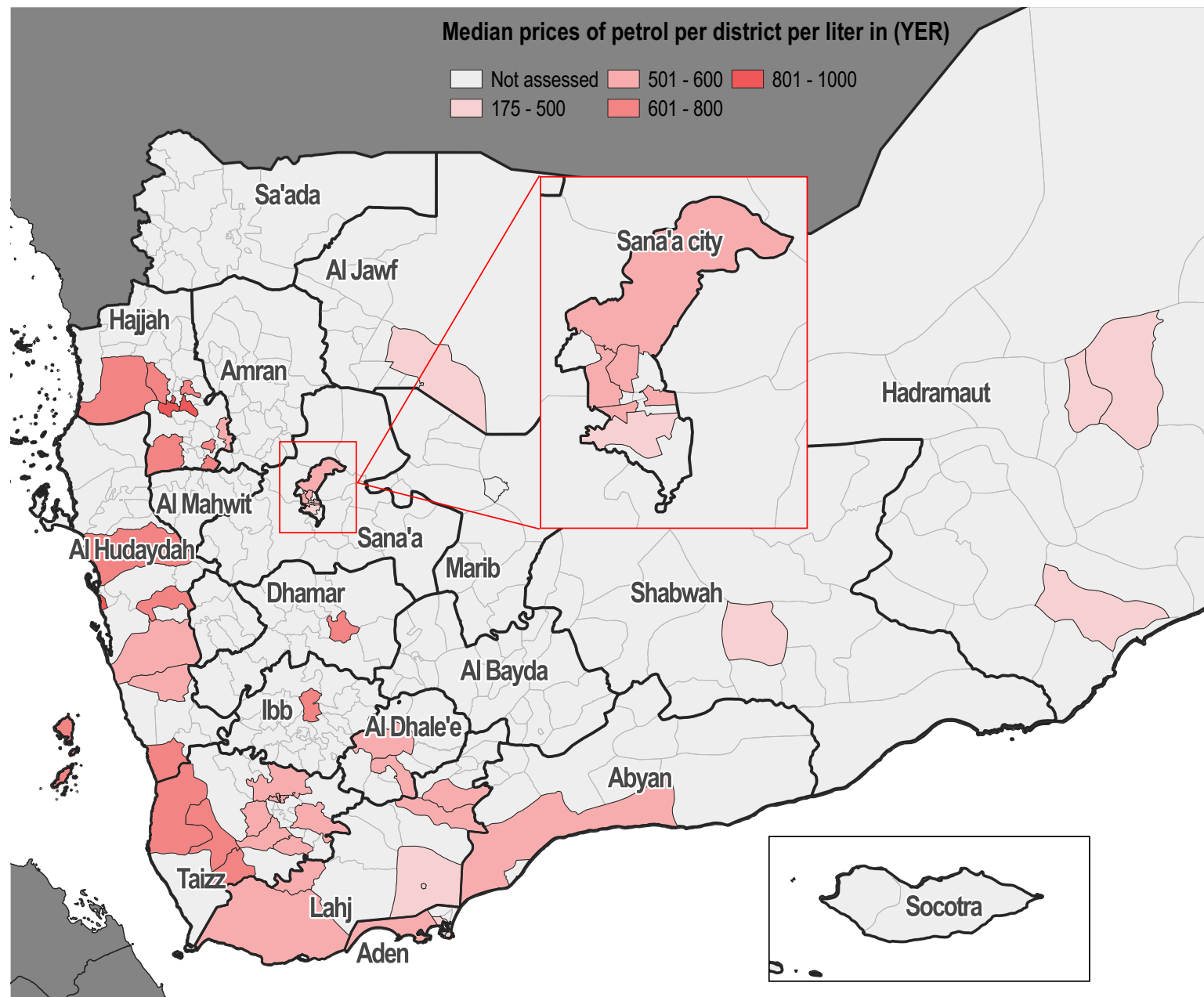
^Includes increased currency fluctuations, lack of oil derivatives, and additional fees.



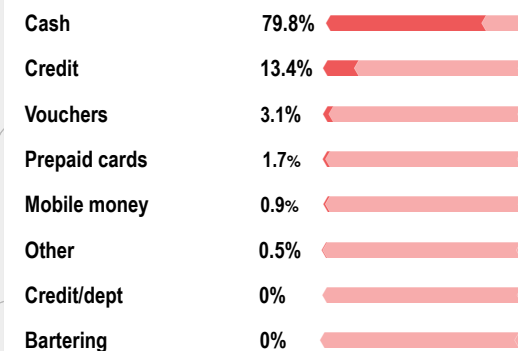
*Total SMEB cost in the legend represents the calculated food basket cost with dry beans.

Median prices of petrol per district per liter in (YER)

Not assessed 501 - 600 801 - 1000
175 - 500 601 - 800

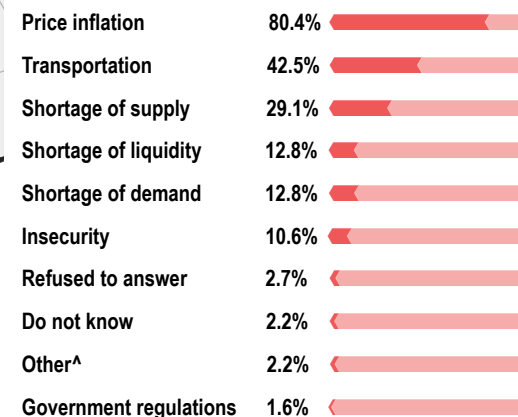


Fuel vendor KIs reported accepting the following payment modalities*



*Values do not add up to 100% as vendor KIs were allowed to select multiple options.

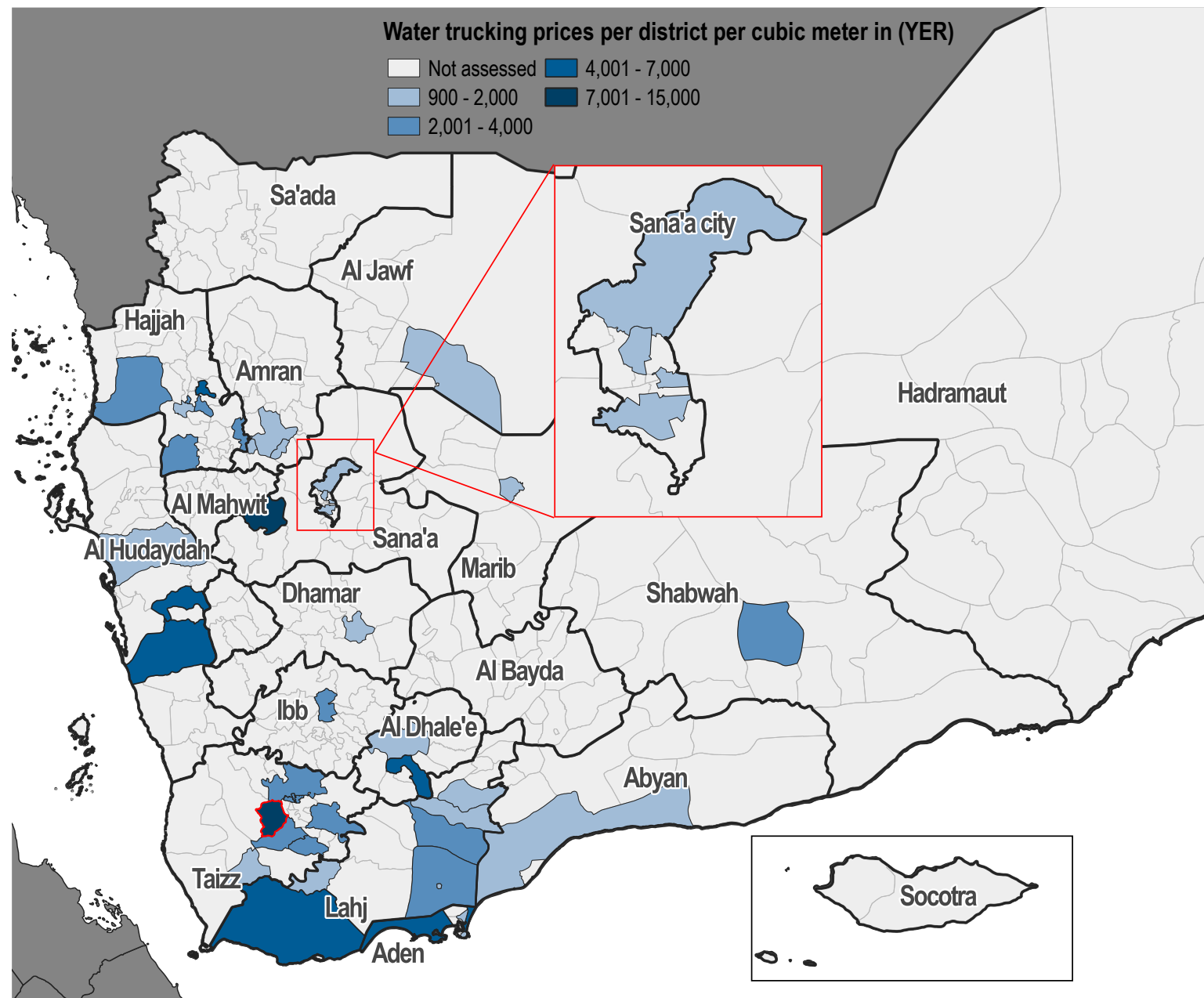
Most commonly reported constraints, by % of fuel vendor KIs*



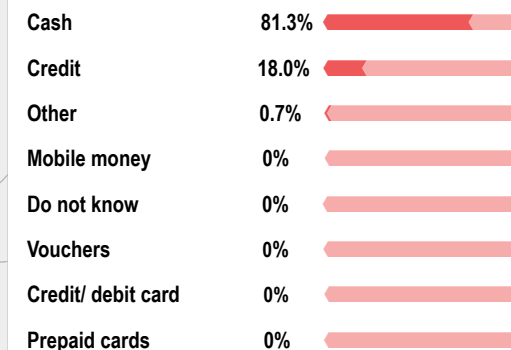
*Values do not add up to 100% as vendor KIs were allowed to select multiple options.

^Includes increased currency fluctuations, loss of vendors in the area, and additional fees.

Water Trucking



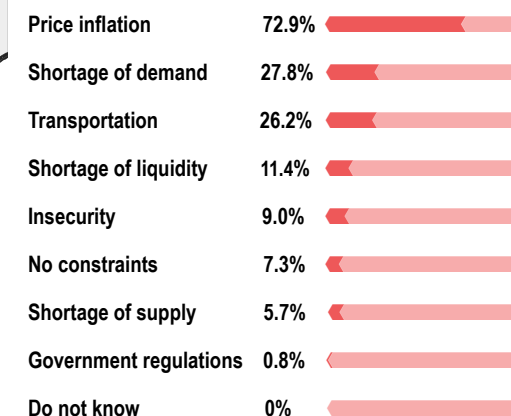
Water trucking vendor KIs reported accepting the following payment modalities*



*Values do not add up to 100% as vendor KIs were allowed to select multiple options.

^Includes bank transfers.

Most commonly reported constraints, by % of water trucking vendor KIs*



*Values do not add up to 100% as vendor KIs were allowed to select multiple options.

^Includes increased currency fluctuations, loss of vendors in the area, and additional fees.

SUPPLY CHAIN OVERVIEW FOR YEMEN

Median price of goods originating from Aden and al Hudaydah

Vendor KIs were asked about the origin of various products sold in their stores. The two main ports of origin for these products were Aden and al Hudaydah. The table below shows the median price of goods originating from these two ports.

Item	Al Hudaydah (price in YER)	Aden (price in YER)
Petrol (1L)	600	600
Diesel (1L)	650	650
Cooking Gas (1 cylinder)	10000	6500
Bottled water (0.75L)	150	200
Treated water (10L)	100	120
Soap (100g)	150	230
Laundry Powder (100g)	130	150
Sanitary Napkins (10 units)	500	700
Wheat Flour (1kg)	330	600
Rice (1kg)	450	1175
Beans Dry (1kg)	400	1950
Beans Can (15oz can)	400	1050
Lentils (1kg)	550	1700
Vegetable Oil (1L)	360	600
Sugar (1kg)	200	150
Salt (1kg)	400	500
Potatoes (1kg)	400	400
Onions (1kg)	400	350
Bleach (1L)	600	900
Water trucking (1m³)	2500	2333

Average reported restocking time (days)*^

Governorate	Fuel Items	WASH Items	Food Items
Abyan	4 (6)	4 (4)	NA (4)
Aden	3 (4)	3 (3)	NA (3)
Al Dhale'e	3 (3)	2 (1)	1 (2)
Al Hudaydah	13 (10)	11 (17)	2 (11)
Al Jawf	4 (3)	3 (3)	1 (3)
Amran	5 (NA)	5 (3)	NA (5)
Dhamar	1 (NA)	2 (1)	1 (2)
Hadramaut	7 (4)	6 (9)	1 (6)
Hajjah	5 (9)	6 (7)	1 (6)
Ibb	4 (3)	3 (3)	1 (3)
Lahj	5 (6)	8 (6)	3 (8)
Marib	6 (3)	8 (3)	2 (8)
Sana'a	2 (5)	2 (2)	NA (2)
Sana'a City	2 (4)	3 (3)	1 (3)
Shabwah	2 (3)	3 (2)	1 (3)
Taizz	5 (5)	6 (6)	1 (6)

*Previous average restocking time (March 2020) in days between brackets.

^N/A indicates that the specific question was not answered by the KIs.

Vendor capacity to respond to a sudden increase in demand: Proportion of vendors able to absorb a 50% and 100% increase in demand for key items*

To understand vendor capacity to cope with sudden increases in the demand for water trucking, fuel, and WASH items, vendor KIs were asked if they would be able to increase their stock by 50% and 100% respectively.

Effect of supply route changes on businesses

Overall, 28.3% of vendor KIs (61/215) reported having faced supply chain disruptions in the 30 days prior to data collection. Those vendors were asked which supply chain issues they had faced (see graph on the right).

Most commonly reported supply chain issues*

Damage to market area	67.7%
Damage to market facility	58.1%
Movement restriction	32.2%
Other	25.8%

*Values do not add up to 100% as vendor KIs were allowed to select multiple options.

^Other includes: "Lack of oil derivatives" and "high exchange USD/YER rate".

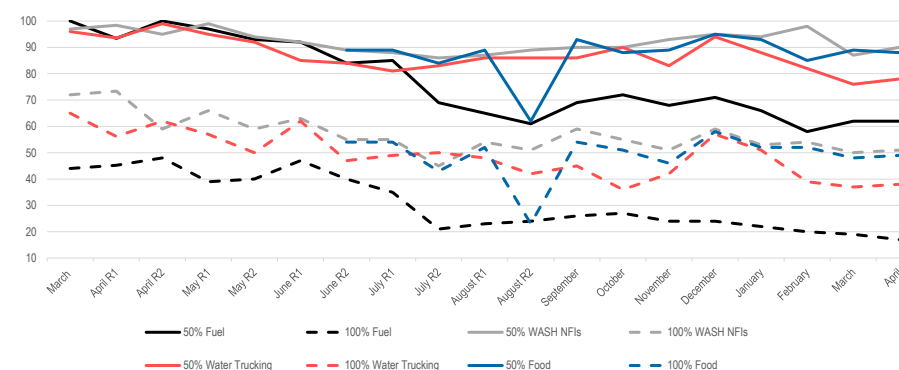
Damaged infrastructure affecting vendor capacity to conduct business

The 39 vendor KIs who reported "damage to the market area" and/or "damage to the market facility" as concerns affecting their capacity to run their businesses were then asked which type of infrastructure was most damaged.

Most commonly reported infrastructure damage*

Road	96.0%
Water	80.0%
Electrical	76.0%
Communication	56.0%

*Values do not add up to 100% as vendor KIs were allowed to select multiple options.



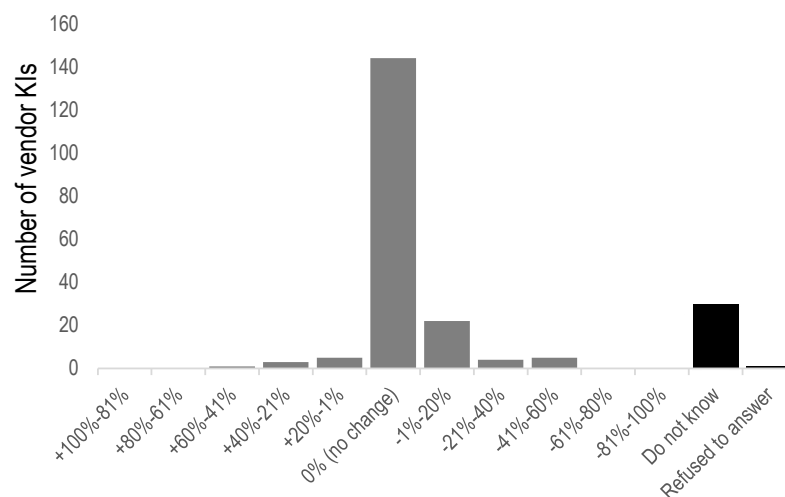
*Between April and August 2020, two rounds of data collection were held each month to monitor the foreseen more rapid changes as a result of the COVID-19 pandemic and restrictions

Impact of COVID-19 on respondents' businesses

Reported estimated change in number of customers in the two weeks prior to data collection

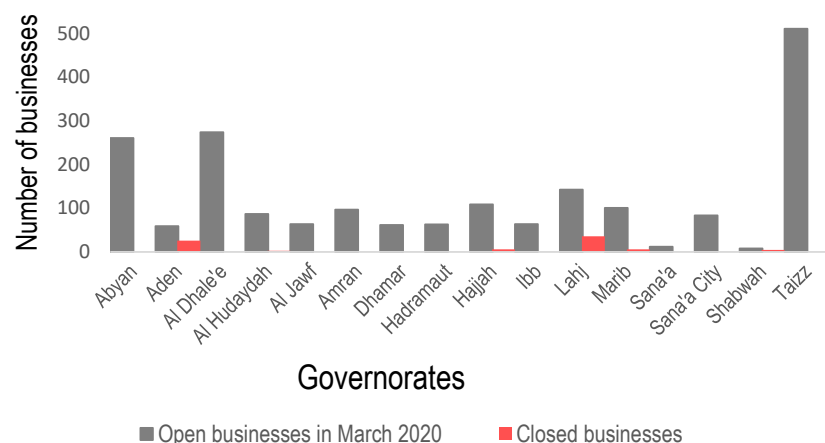
Overall, the majority of vendor KIs (66.9%) reported having perceived no change in the number of customers in the two weeks prior to data collection. Less vendors reported having experienced a change in customers, be it either a decrease (14% or 31/215 vendors) or increase (8%, or 9/215 vendors) of customers.

Of the 215 vendor KIs surveyed, 5.1% (11/215) reported having faced difficulties obtaining key commodities due to disruptions caused by COVID-19 measures in the two weeks prior to data collection (compared to 3.2% reporting this during previous round of data collection in March).



Average number of businesses closures by governorate^

The reported number of businesses within a 2 minute walk from vendor KIs' stalls being closed in the two weeks prior to data collection (82 businesses) increased by 7.8% compared to the last round of data collection in March (76 businesses).



Average reported number of nearby businesses that were open in April 2020^



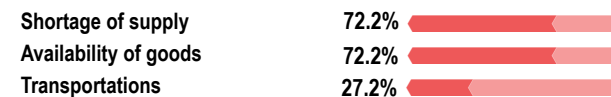
^Average number of businesses within a two minute walk from KIs' businesses that were reportedly open in early March 2020.

Average reported number of nearby businesses that were closed^

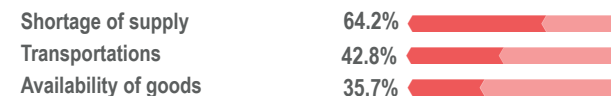


^Average number of businesses within a two minute walk from KIs' businesses that were reportedly closed due to COVID-19 in the two weeks prior to data collection.

Top 3 COVID-19 related constraints*

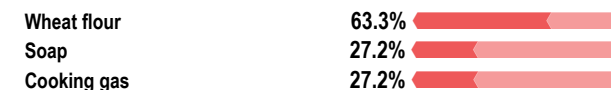


Results from the previous JMMI round (7 - 11 March)

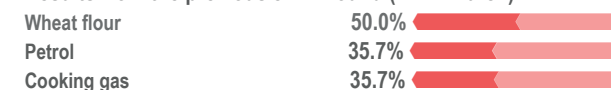


*Based on the responses from the 5.1% (11 out of 215) of vendor KIs who had difficulties obtaining goods due to COVID-19.

Top 3 most difficult goods to obtain*^



Results from the previous JMMI round (7 - 11 March)



^Based on the responses from the 5.1% (11 out of 215) of vendor KIs who had difficulties obtaining goods due to COVID-19.

ABOUT REACH'S COVID-19 RESPONSE

As an initiative deployed in many vulnerable and crisis-affected countries, REACH is deeply concerned by the devastating impact the COVID-19 pandemic may have on the millions of affected people we seek to serve. REACH works with Cash Working Groups and Partners to provide up-to-date evidence to inform the humanitarian responses in the countries where we operate. COVID-19-relevant market monitoring and market assessments are a key area where REACH aims to leverage its existing expertise to help humanitarian actors understand the impact of changing restrictions on markets and trade. Updates regarding REACH's response to COVID-19 can be found in [a devoted thread](#) on the REACH website. Contact geneva@impact-initiatives.org for further information.

DISTRICTS COVERED

Governorate	District	Petrol price	Water Trucking	SMEB WASH	SMEB Food	SMEB Total	Fuel: Supplier Governorate	Fuel: Total number of respondents^	WASH: Supplier Governorate	WASH: Total number of respondents^	Food: Supplier governorate	Food: Total number of respondents^
Hajjah	Abs	700	2500	14950	44075	59025	5/6	Al Hudaydah	4/7	Al Hudaydah	4/7	Al Hudaydah
Al Dhale'e	Ad Dhale'e	600	5000	26375	54300	80675	3/4	Al Dhalee	4/4	Al Dhalee	4/4	Al Dhalee
Lahj	Al Hawtah	500	1600	15665	64604	80269	3/3	Aden	3/3	Aden	3/3	Aden
Taizz	Al Mukha	623	NA	16462	49850	66312	6/6	Aden	6/6	Aden	6/6	Aden
Aden	Al Buraiqeh	500	6700	30480	60450	90930	4/4	Aden	5/5	Aden	5/5	Aden
Al Hudaydah	Al Hawak	750	NA	28515	40150	68665	NA	NA	NA	NA	NA	NA
Sana'a	Al Haymah Ad		11000	41263.5	NA	NA	3/3	Al Hudaydah	3/3	Sana'a	3/3	Sana'a
Al Jawf	Al Hazm	600	2000	19425	NA	NA	3/3	Marib	2/3	Sana'a	3/3	Sana'a
Al Hudaydah	Al Khawkhah	620	NA	28689	48550	77239	3/3	Aden	3/3	Aden	3/3	Aden
Taizz	Al Ma'afer	600	4000	22200	53150	75350	4/9	Aden	6/8	Aden	4/9	Aden
Lahj	Al Madaribah Wa	600	6500	29150	62825	91975	3/3	Aden	3/3	Aden	3/3	Aden
Hajjah	Al Mahabishah	600	4000	19700	42100	61800	3/3	Hajjah	6/6	Hajjah	4/6	Hajjah
Ibb	Al Makhadir	650	3000	17550	46275	63825	NA	NA	3/3	Ibb	3/3	Ibb
Aden	Al Mansura	500		18211	55899	74110	3/3	Aden	3/3	Aden	3/3	Aden
Lahj	Al Maqatirah	550	2000	17005	65379	82384	3/3	Aden	3/3	Aden	3/3	Aden
Taizz	Al Mawasit	600	4000	21200	62825	84025	NA	NA	3/4	Taizz	3/4	Taizz
Lahj	Al Milah	590	2800	17420	63870	81290	3/3	Aden	2/3	Aden	2/3	Lahj
Taizz	Al Mudhaffar	650	2500	17275	79230	96505	3/3	Aden	3/3	Aden	3/3	Aden
Hadramaut	Al Mukalla City	500	NA	NA	NA	NA	3/3	Hadramaut	3/3	Hadramaut	3/3	Hadramaut
Taizz	Al Qahirah	650	2500	17685	78440	96125	3/3	Aden	3/3	Aden	3/3	Aden
Taizz	Al Wazi'iyah	620	900	12685	58933	71618	5/6	Aden	4/4	Aden	5/6	Aden
Amran	Amran	NA	1750	12145	NA	NA	NA	NA	NA	NA	4/6	Sana'a
Sana'a City	As Sabain	295	1600	11507	37700	49207	1/3	Sana'a city	3/3	Sana'a city	3/3	Sana'a city
Al Hudaydah	As Sukhnah	600	7000	28725	35000	63725	3/3	Al Hudaydah	3/3	Al Hudaydah	3/3	Al Hudaydah
Aden	Ash Shaikh	500	1400	12010	53800	65810	3/3	Aden	3/3	Aden	3/3	Aden
Taizz	Ash Shamayatayn	600	NA	17588	60750	78338	3/3	Lahj	2/3	Lahj	2/3	Taizz
Al Dhale'e	Ash Shu'ayb	NA	NA	18104	57733	75837	NA	NA	3/3	Aden	3/3	Aden
Hajjah	Aslem	650		16388	41650	58038	NA	NA	NA	NA	NA	NA
Taizz	At Ta'iziyah	650	3000	17550	45750	63300	1/1	Taizz	3/3	Taizz	3/3	Taizz
Shabwah	Ataq	500	2600	25940	48375	74315	NA	NA	2/3	Sana'a	2/3	Hadramaut
Sana'a City	Ath'thaorah	600	1500	11450	36700	48150	3/3	Sana'a	3/3	Sana'a	3/3	Sana'a
Sana'a City	Az'zal	600	1650	11923	37200	49123	3/3	Sana'a	3/3	Sana'a	2/3	Sana'a
Al Hudaydah	Bajil	600	1750	12188	34200	46388	3/3	Al Hudaydah	3/3	Al Hudaydah	3/3	Al Hudaydah
Hajjah	Bani Al Awam	700	NA	15638	42675	58313	1/2	Sana'a	2/3	Hajjah	NA	NA
Sana'a City	Bani Al Harith	600	1700	12080	36300	48380	3/3	Sana'a	3/3	Sana'a	3/3	Sana'a
Hajjah	Bani Qa'is	700	2500	14950	47525	62475	6/6	Al Hudaydah	6/6	Al Hudaydah	6/6	Al Hudaydah
Al Hudaydah	Bayt Al Faqiah	600	7000	28725	35000	63725	3/3	Al Hudaydah	3/3	Al Hudaydah	3/3	Al Hudaydah
Aden	Craiter	500	1200	14205	56254	70459	3/3	Aden	3/3	Aden	3/3	Aden
Dhamar	Dhamar City	650	1500	12087	42475	54562	1/3	Dhamar	3/3	Dhamar	3/3	Dhamar
Taizz	Dimnat Khadir	600	3000	17550	51400	68950	1/2	Sana'a city	3/3	Taizz	3/3	Taizz

CONT.

Governorate	District	Petrol price	Water Trucking	SMEB WASH	SMEB Food	SMEB Total	Fuel: Supplier Governorate	Fuel: Total number of respondents^	WASH: Supplier Governorate	WASH: Total number of respondents^	Food: Supplier governorate	Food: Total number of respondents^
Lahj	Habil Jabr	520	2000	14950	61100	76050	2/3	Aden	3/3	Aden	3/3	Aden
Hajjah	Hajjah City	700	NA	16388	41775	58163	3/3	Al Hudaydah	3/3	Al Hudaydah	3/3	Al Hudaydah
Taizz	Jabal Habashy	625	15000	56450	58805	115255	2/2	Lahj	3/3	Taizz	1/1	Taizz
Amran	Jabal Iyal Yazid	NA	1300	11940	NA	NA	NA	NA	3/3	Amran	3/3	Amran
Abyan	Khanfir	600	2000	14562	54950	69512	3/3	Aden	3/5	Abyan	3/5	Abyan
Aden	Khur Maksar	500	5000	23850	58250	82100	3/3	Aden	3/3	Aden	3/3	Aden
Hajjah	Kuhlan Affar	650	3000	15925	38825	54750	NA	NA	3/3	Amran	3/3	Amran
Hajjah	Kuhlan Ash Sharaf	800	5500	23585	38520	62105	NA	NA	3/3	Hajjah	2/3	Hajjah
Marib	Marib City	175	1000	13815	55950	69765	4/4	Marib	6/10	Marib	8/10	Marib
Taizz	Mawza	630	NA	18440	56045	74485	2/3	Aden	3/3	Aden	3/3	Aden
Al Dhale'e	Qa'atabah	530	1250	12763	55548	68311	3/3	Aden	7/7	Aden	7/7	Aden
Hajjah	Qafil Shamer	850	1600	11640	37700	49340	3/3	Hajjah	3/3	Hajjah	3/3	Hajjah
Lahj	Radfan	520	2000	14790	60875	75665	3/3	Aden	3/3	Aden	3/3	Aden
Taizz	Salh	650	3000	18860	80650	99510	3/3	Aden	3/3	Aden	3/3	Aden
Lahj	Tuban	500	4000	21016	64800	85816	6/6	Aden	6/6	Aden	6/6	Aden
Al Hudaydah	Zabid	600	NA	29025	38800	67825	2/3	Al Hudaydah	3/3	Al Hudaydah	2/3	Al Hudaydah
Al Hudaydah	Zabid	575	NA	16125	36550	52675	3/3	Al Hudaydah	3/3	Al Hudaydah	3/3	Al Hudaydah

^If the number is 4/10 (e.g.), this indicates that 10 vendor KIs were interviewed, and of this, 4 answered the supply question.

The supplier governorate indicates the most prevalent answer. In the case of a tie, both governorates are shown.

*The table shows SMEB values and supply chains inside the same governorate and towards other governorates. Districts without a main supplier are those districts where vendor KIs could not identify the origin of the items they sold.

APPENDIX

What is the cash and markets working group (CMWG)?

With the emergence of the conflict in 2014, humanitarian actors in Yemen began using cash and vouchers as a response tool to meet the immediate needs of the Yemeni population. The CMWG was established to provide a platform for discussion and setting standards/recommendations on cash and market-based responses (inclusive of cash and vouchers) for the cash actors in Yemen. The JMIMI was developed by the CMWG, the WASH Cluster, and REACH in order to harmonize price monitoring amongst WASH actors in Yemen.

Additional information on methodology

To be assessed by the JMIMI, markets must be either a single permanent market, or a local community where multiple commercial areas are located in close proximity to one another. When possible, markets/shops are selected within a single geographical location, where there is at least one wholesaler operating in the market.

Participating organisations train their enumerators on the JMIMI methodology and data collection tools using standard training materials developed by REACH. Each month, enumerators conduct KI interviews with market vendors to collect three price quotations for each item from the same market in each district. In addition to price levels, vendors are asked about the location of their supplier, the number of days it takes to restock the items, and the constraints they are facing in purchasing and selling the items in question. Additional questions are included for water trucking, to gauge the impact of delivery distance upon price level.

Following data collection, REACH compiles and cleans all partner data, normalising prices and cross-checking outliers. The cleaned data is then analysed by commodity and by governorate. To illustrate local variations in prices and availability, REACH uses the collected data to map the price of each type of item in each district. REACH also calculates the WASH SMEB (Survival Minimum Expenditure Basket), which is composed of four items: soap (1.05 kg), laundry powder (2 kg), sanitary napkins (50 units) and water trucking (3.15 m3). Food SMEB contains 75 kg of wheat flour, 10 kg of beans (kidney), 8L of vegetable oil, 2.5 kg of sugar, and 1 kg iodized salt.

The cleaned data sets are available on the [REACH Resource Centre](#) and are distributed to all participating partners, as well as to relevant clusters and the broader humanitarian community.

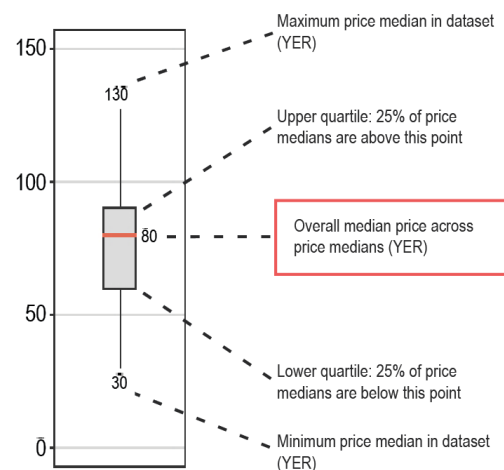
Limitations

Due to issues of access and security across Yemen, the districts included in the JMIMI vary on a monthly basis, and as such there are sometimes a limited number of districts for which trends can be assessed over time. Governorate level data is aggregated from the respective districts assessed in a given month, and so the findings are not representative of individual markets. Finally, the market monitoring process has been coordinated remotely by REACH, which inherently presents some challenges in terms of coordination and follow-up with partners. Participating organisations are therefore requested to adopt harmonised data collection methodologies and tools to ensure that the data uploaded is as accurate as possible.

Calculation of district and governorate median price

District, governorate and national median prices are calculated using data from all assessed markets. Percentage changes from one month to another are calculated only on data from markets that were assessed in both consecutive months. Therefore, part of the percentage variation could be attributed to changes in monthly coverage.

How to read a box plot



ABOUT REACH

REACH is a joint initiative that facilitates the development of information tools and products that enhance the capacity of aid actors to make evidence-based decisions in emergency, recovery and development contexts. By doing so, REACH contributes to ensuring that communities affected by emergencies receive the support they need. All REACH activities are conducted in support to and within the framework of inter-agency aid coordination mechanisms. For more information, please visit our website at www.reach-initiative.org, contact us directly at ahmet.damar@reach-initiative.org or follow us on Twitter at [@REACH_info](https://twitter.com/REACH_info).

Participating partners include



Number of districts assessed per governorate

Governorate	Assessed districts
Abyan	1
Aden	5
Al Dhale'e	3
Al Hudaydah	6
Al Jawf	1
Amran	2
Dhamar	1
Hadramaut	1
Hajjah	9
Ibb	1
Lahj	7
Marib	1
Sana'a	1
Sana'a City	4
Shabwah	1
Taizz	12