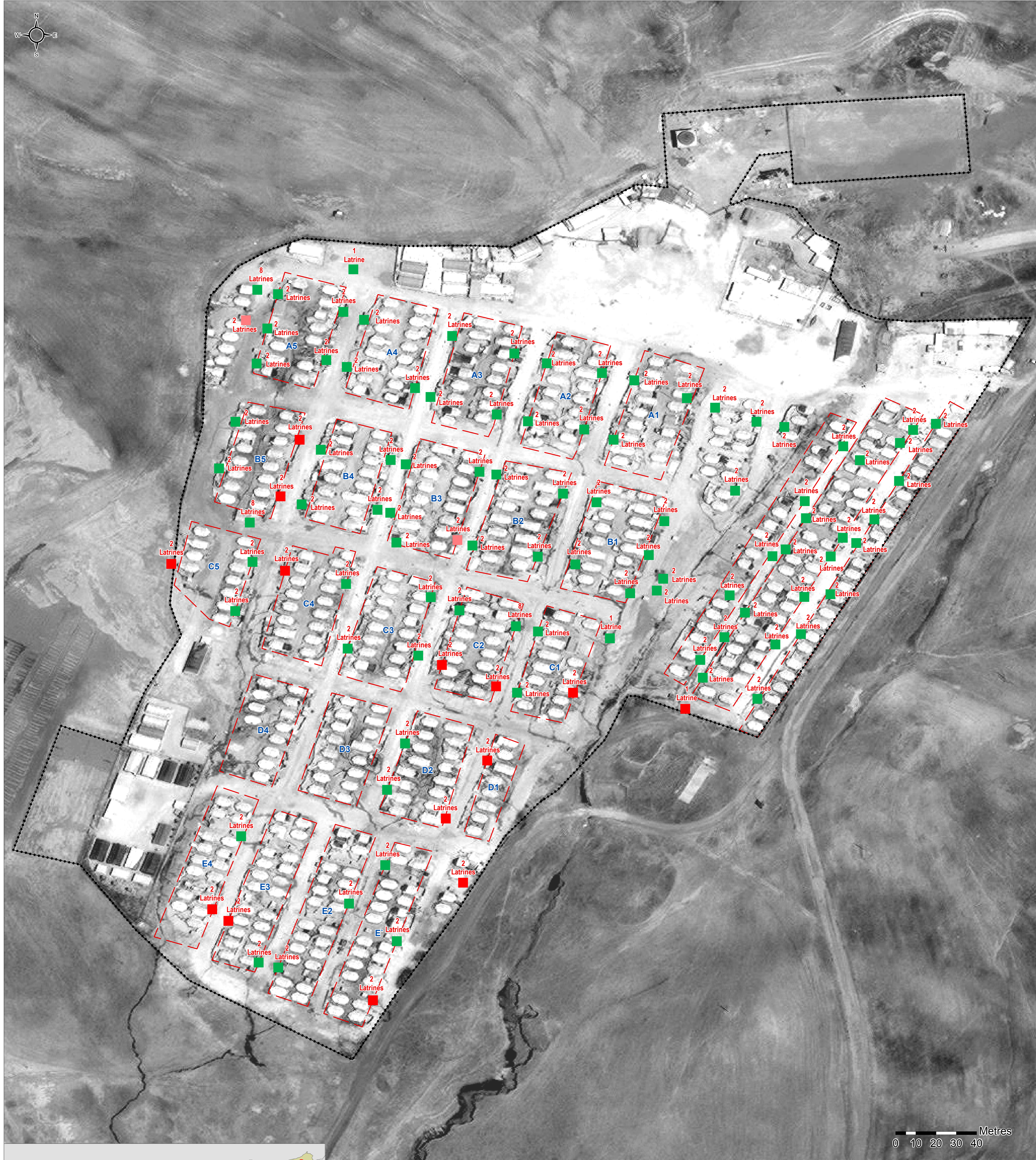


SYRIA - Al Hasakeh - Roj Refugee / IDP Camp

Percent of functioning latrines - As of November

For Humanitarian Purposes Only
Production date: 07 January 2018



% of individual latrines by block that are functioning

- 0 - 25 %
- 26 - 50 %
- 51 - 75 %
- 76 - 100 %

- ▭ Blocks
- ⋯ Fence

Data Sources:
Infrastructure: REACH
Satellite Imagery: GeoEye-1 from 20 May 2017
Copyright: ©2017 DigitalGlobe
Source: US Department of State, Humanitarian Information Unit, NextView License

Projection: GCS WGS 1984
File: REACH_SYR_Map_Roj_Camp_latrine_November2017_A0
Contact: mena.reach@impact-initiatives.org

Note: Data, designations and boundaries contained on this map are not warranted to be error-free and do not imply acceptance by the REACH partners, associates or donors mentioned on this map.