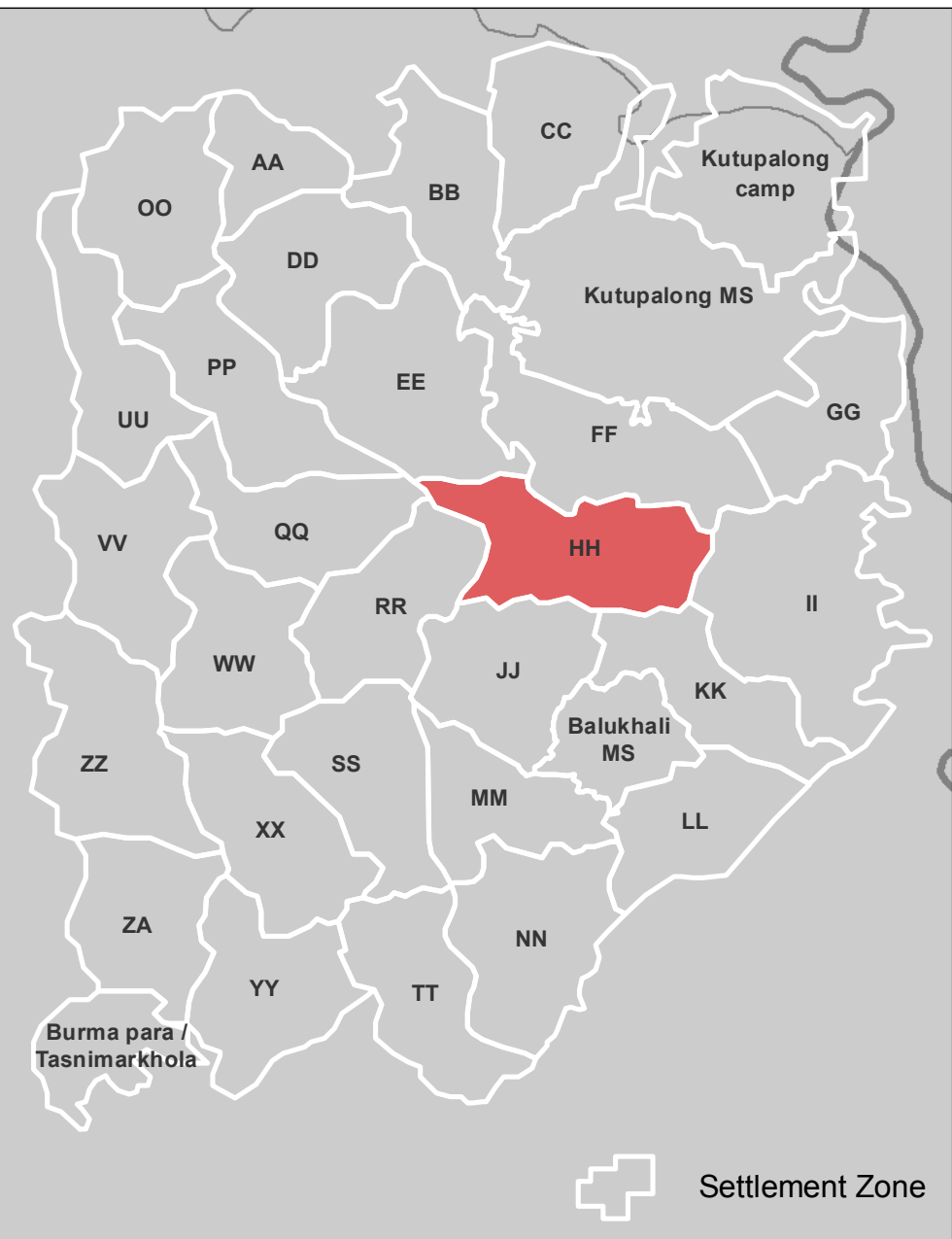
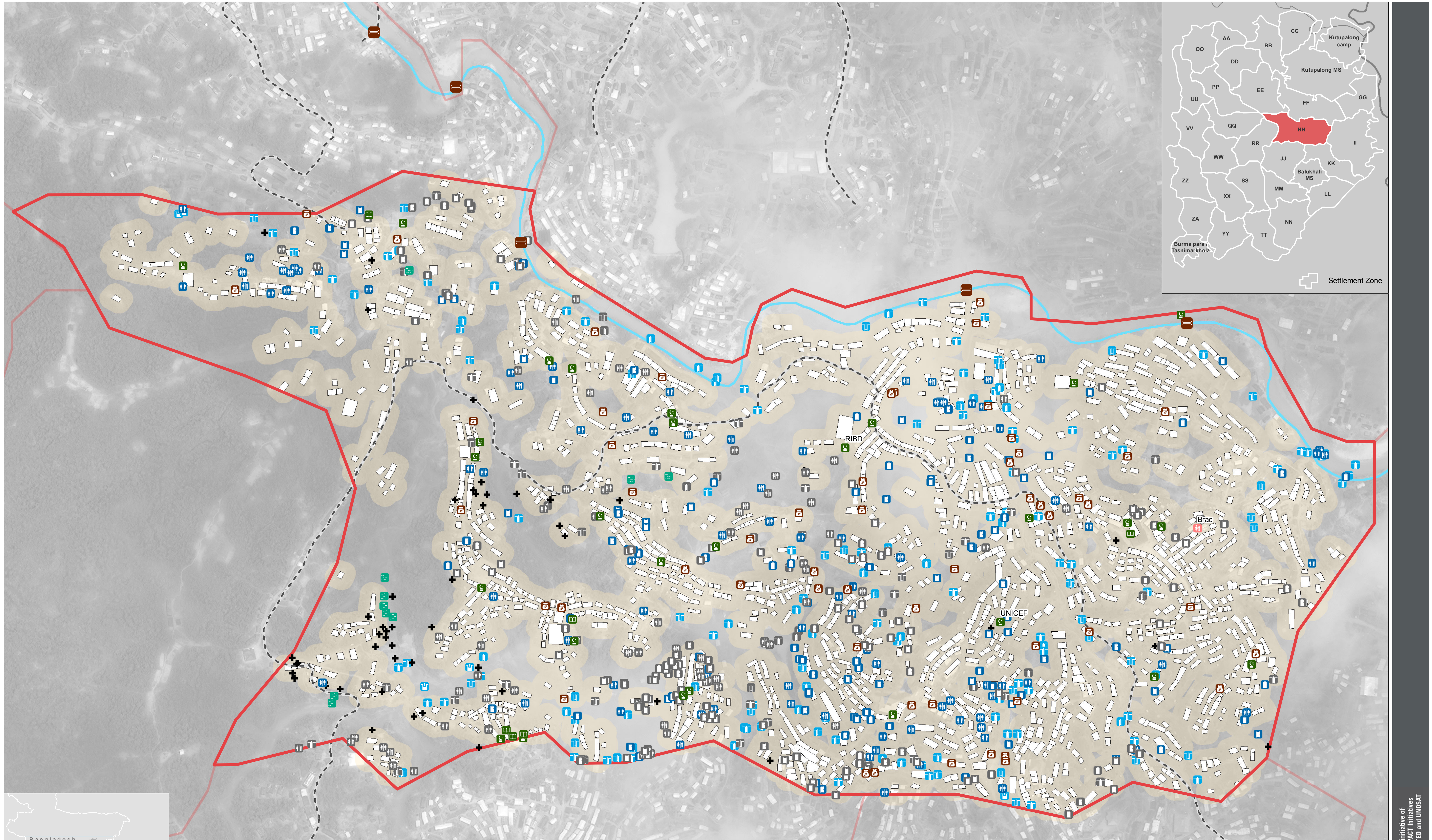


BANGLADESH - Rohingya Refugee Crisis - Cox's Bazar District

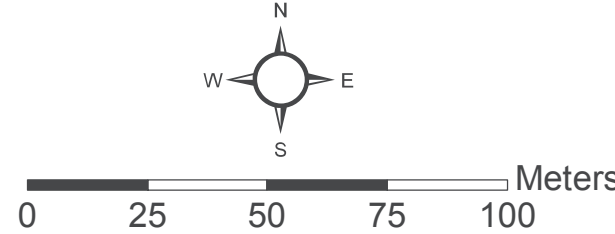
Kutupalong Extension - Zone HH - General Infrastructure



- Latrines Block
- Makeshift Latrines Block
- Latrines Block (Non Functioning)*
- Makeshift Latrines Block (Non Functioning)*
- Open Defecation Area
- Unimproved Water Source

- Hand Pump/Tubewell
- Unimproved Well
- Hand Pump/Tubewell (Non Functioning)*
- Child Friendly Space
- Madrassah
- Mosque
- Shop(s)

- Zone Boundary
- Shelter Footprints (as of 06 October)
- Pedestrian Bridge
- Primary Footpath
- River



*Due to missing information in data collected by enumerators, the number of non-functioning facilities may be higher than indicated.
Note: Data, designations and boundaries contained on this map are not warranted to be error-free and do not imply acceptance by the REACH partners, associates or donors mentioned on this

Data Sources:
Camp Infrastructure - REACH
Site Boundaries - REACH / OCHA ROAP
Shelter Footprints - REACH / UNOSAT
Satellite Imagery: WorldView-3 from 06 October 2017
Copyright: ©2017 DigitalGlobe
Source: US Department of State, Humanitarian Information Unit, NextView License.
Coordinate System: GCS WGS 1984
File: reach_bgd_map_coxsbazar_hh_infrastructure_16102017_a1
Contact: reach.mapping@impact-initiatives.org

