

# Sudan | Joint Market Monitoring Initiative (JMMI)

5 - 14 February 2026

MARKET OVERVIEW

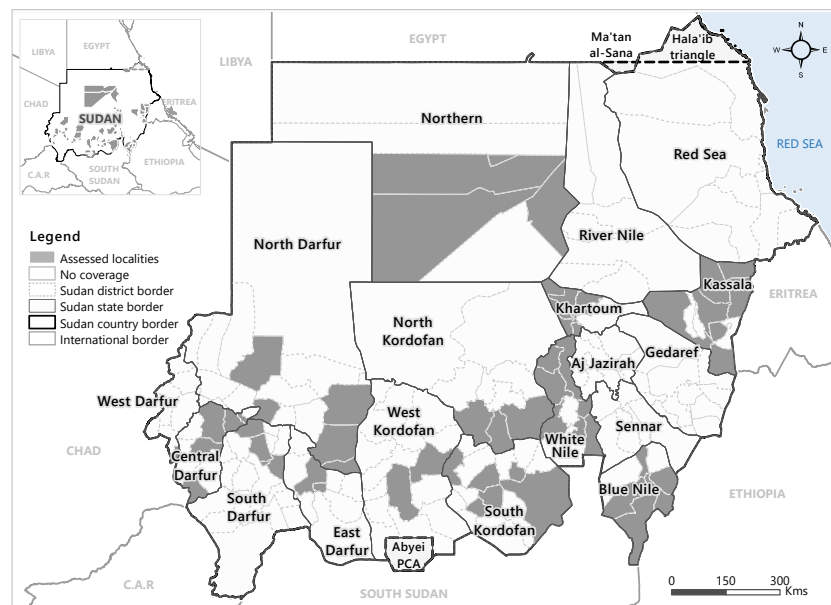
## INTRODUCTION

Given the rapidly changing humanitarian context in Sudan, the Joint Market Monitoring Initiative (JMMI) was established under the guidance of the Sudan Cash Working Group (CWG) to inform cash-based interventions and to gain a deeper understanding of market dynamics in the country. The JMMI aims to inform market-based programming in Sudan through monthly monitoring of prices of selected food and non-food items (NFI) as well as other critical market indicators.

Marketplaces across Sudan are assessed through two different channels: (i) in some state capitals, prices of food items are monitored by the World Food Programme (WFP), (ii) in other locations, prices and other critical market indicators are recorded every month by JMMI partners through interviews with purposively sampled retailers. Data for the latest round of the JMMI was collected from 5th to 14th February 2026.

11	Participating agencies	1,695	Key Informant Interviews (KIIs)
13	Assessed states	19	Commodities assessed
54	Localities		

## Map1: Coverage by locality



## KEY INDICATORS (Change since Jan 2026)

<b>Cost of MEB</b> 515,146 SDG 207 USD* <b>▲ 27,410 SDG + 6%</b>	<b>Cost of MEB with top-up items</b> 589,646 SDG 237 USD <b>▲ 37,125 SDG + 7%</b>	<b>Exchange rate*</b> USD/SDG 2,488 SDG <b>▲ 88 SDG + 4%</b>
---	--	---

\* Based on the exchange rate provided by the Bank of Khartoum.

## KEY FINDINGS

- **The national Minimum Expenditure Basket (MEB) without top-up increased by 6% compared to January 2026, reaching 515,146 SDG.** The highest observed values were recorded in **North Darfur** (554,417 SDG; +21% since January 2026), **West Darfur** (540,794 SDG; +25%), and **North Kordofan** (536,318 SDG; +6%).
- At the district level, the highest MEB values were observed in **Um Kadadah, South Kordofan** (630,715 SDG; +5%), **At Tawisha, North Darfur** (586,409 SDG; +7%), and **Dongola, North Kordofan** (568,800 SDG).
- The median cost of **food items** in the national MEB indicated an **increase of 9%** between January 2026 (214,039 SDG) and February 2026 (238,369 SDG), driven by a price increase in some of the food items, notably, **onions** (+25%), **sorghum** (+18%), **sugar** (+15%), **vegetable oil** (+8%), **cow meat** (+7%), **milk** (+4%), and **goat meat** (+2%). **The most expensive food components** in the MEB were recorded in **Um Bada, Khartoum** (318,761 SDG), **Dongola, North Kordofan** (315,836 SDG), and **Um Kadadah, North Darfur** (310,770 SDG).
- The national MEB **household items without top-up increased by 5% since January 2026 (123,000 SDG)**, driven by **gas refill** (+4%) and **water supply** (+3%). **Household items with top-up have increased by 9%**, driven mainly by **gas cylinder** (+17%) and **water container** (+2%). **The highest-cost household items without top-up** in the MEB were observed in **At Tawisha, North Darfur** (190,667 SDG), **Dongola, North Kordofan** (169,667 SDG), and **Um Kadadah, North Darfur** (148,666 SDG).
- **The median cost of hygiene items in the national MEB recorded an increase of 4%** since January 2026, reaching 42,146 SDG, driven by price increases in key components, notably toothbrush and toothpaste (+25% each) and body soap (+14%). **The highest hygiene item costs** were recorded in **Um Dukhun locality** (64,867 SDG) in **Central Darfur** state, followed by **Al Kurmuk** (60,300 SDG) in **Blue Nile** state and **Kutum** (59,500 SDG) in **North Darfur** state.
- Overall, markets were found to be functional, with two markets (out of 51) recording scores of less than 50 out of 100, notably in **Foro Baranga, West Darfur**, and **Dilling, South Kordofan** (46 and 48, respectively). Additionally, more than **half of the markets (55%) scored below average on the affordability pillar.**

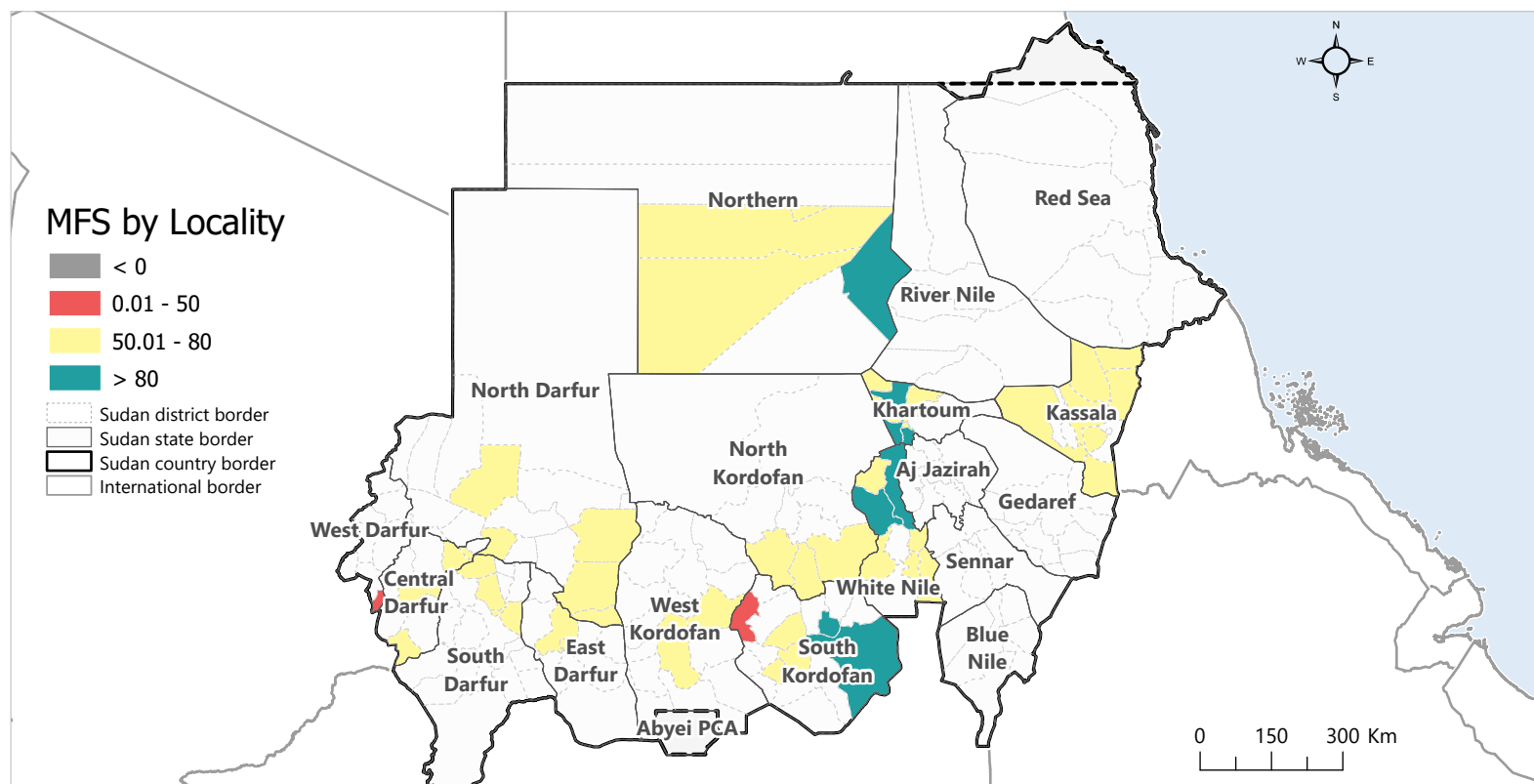


## Market Functionality Score (MFS)

The Market Functionality Score (MFS) is a method of classifying markets based on their level of functionality, helping aid actors understand which markets function well enough to support cash and voucher assistance (CVA) and which may require alternative interventions. The MFS is divided into five dimensions:

- **Accessibility (25%):** physical and social access to markets
- **Availability (30%):** ability of markets to consistently supply core commodities
- **Affordability (15%):** financial access to markets and price volatility
- **Resilience (20%):** vulnerability of supply chains and ease of restocking
- **Infrastructure (10%):** state of markets' physical and financial infrastructure

## Map2: MFS by locality



### Key Findings\*

- Overall, the assessed markets indicated an **above-average functionality outlook**, with 2 out of 56 assessed markets (**Dilling, South Kordofan: 46** and **Foro Baranga, West Darfur: 48**) reporting an MFS score of less than 50 out of 100.
- **66% (37/56) of localities** scored 70 or above, indicating generally functional markets despite contextual constraints.
- **Affordability** remains the most prevalent constraint across assessed markets. Moreover, a substantial proportion of localities (32 out of 56; 57%) recorded a

below average score (8/15), primarily driven by limited access to financial services.

- **Accessibility** scores are generally high, with 37 localities (66%) recording the maximum score of 25. However, 3 out of 56 localities (5%) recorded below average score (13/25), indicating persistent physical and/or security-related access constraints. These localities include Kutum in North Darfur, Dilling in South Kordofan, and As Salam - WK in West Kordofan.
- **Out of the assessed marketplaces, 27 (48%) scored below average in the resilience pillar**, indicating vulnerability to supply chain disruptions and limited vendors

replenishment capacity to restock due to breakdowns in supply chains.

- **Availability** scores are generally high, with 1 out of 57 localities (Um Rimta, White Nile state) scoring below average (15/30), indicating the inability of the market to consistently meet the demand of core commodities.

\* MFS scores per pillar and locality illustrated in the tables in the Appendix (page 11).

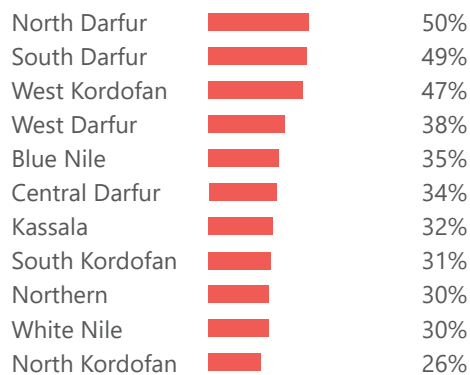
### Market Functionality

- A significant proportion of the interviewed vendors (**91%**) reported **limited physical challenges in accessing marketplaces**. In **West Darfur, 46% (n=6)** of vendors reported experiencing access constraints (23%, n=3) and movement restrictions. Similarly, in **South Kordofan, 28% (n=44)** of vendors reported access constraints, primarily due to ongoing conflict as the main physical access barrier.
- 33%** of the vendors cited **financial challenges** impacting customers' purchasing power. The top three financial challenges reported by vendors are **unaffordability of goods (17%), inaccessibility to multiple payment modalities (14%), and liquidity issues (13%)**.
- 38%** of vendors reported **difficulties keeping their business operational and well-stocked**, mainly due to the high prices charged by suppliers (24%), limited purchasing power to pay suppliers (12%), limited availability of core goods (11%) and low liquidity issues (8%).
- 14%** of vendors reported **difficulties in obtaining sufficient items to meet customer demand**. The main reasons cited were **lack of funds** to purchase adequate stock (47%), **increase in demand (27%), inaccessibility to credit facilities** from suppliers (18%), and **lower production (16%)**.
- 95%** of vendors reported **charging the same price regardless of the payment modality**. Only 5% charge different amounts; a majority (n=13/15) were located in **South Darfur**, (n=7/17) in **South Kordofan**, while nearly half (n=14/38) were assessed in **North Darfur**.

### Most reported payment modalities accepted by vendors the month before data collection (multiple selection)



### % of interviewed vendors reporting financial challenges limiting travelling to their market or buying the goods they sell



### % of interviewed vendors reporting security factors having a negative impact on their business/customers/work



### Minimum Expenditure Basket (MEB)

The MEB represents the minimum culturally adjusted group of items required to support a six-person Sudanese household for one month. The MEB's contents were defined by the CWG & MEB technical group in consultation with relevant sector leads.

#### Food Items

Product	Unit <sup>2</sup>	Quantity in MEB <sup>3</sup>
Sorghum	1 kilogram (kg)	81 kg
Onions	1 kilogram (kg)	9 kg
Veg oil	1 liter (L)	4.5 L
Milk	1 liter (L)	4.5 L
Cow meat	1 kilogram (kg)	0.9 kg
Goat meat	1 kilogram (kg)	0.9 kg
Dried tomatoes	1 kilogram (kg)	4.5 kg
Sugar	1 kilogram (kg)	7.2 kg

#### Household & hygiene NFI

Product	Unit <sup>2</sup>	Quantity in MEB <sup>3</sup>
LPG* refill	12.5 kg	12.5 kg**
Water refill	20 liters (L)	20 L
Body soap	125 grams (g)	12 bars
Tooth paste	100 milliliters	1 tube
toothbrush	1 piece (pc)	1 piece
Laundry soap	200 grams (g)	6 bars
Liquid dish	600 milliliters	1 bottle
Sanitary pads	8 pieces	3 packages

<sup>2</sup> Measurements taken using local units, then converted into kilograms/liters for each product considered.

<sup>3</sup> Quantity designed to reflect the minimum needs of a six-person household in Sudan for one month.

\* Liquefied petroleum gas

\*\* LPG refill (12.5 KG) represents a quarterly expense which is equivalent to approximately 4.2 KG s per month.

### Fixed costs (lump sums)

While not monitored monthly, the calculation of the MEB also encompasses fixed costs, accounting for essential household expenditures. The present fixed costs are determined from WFP data collected as part of the Food Security Assessment, between January and April 2025. The current lump sums have been applied to the MEB calculation as of May 2025.

HH Expenditure	Cost
Medical expenses	56,322 SDG
Education	20,579 SDG
Clothes	13,398 SDG
Transportation	11,638 SDG
Communication	8,232 SDG
Energy for lighting	5,478 SDG

### Top-up items

Although not considered components of the MEB, as they constitute one-time purchases for households, prices of water containers and gas cylinders are being monitored monthly, with the aim of assessing costs associated with displacement or a loss of household assets.

Product	Unit <sup>2</sup>	Quantity in Top-up
LPG* Cylinder	12.5 kg	1 kg
Water Container	20 liters (L)	20 L



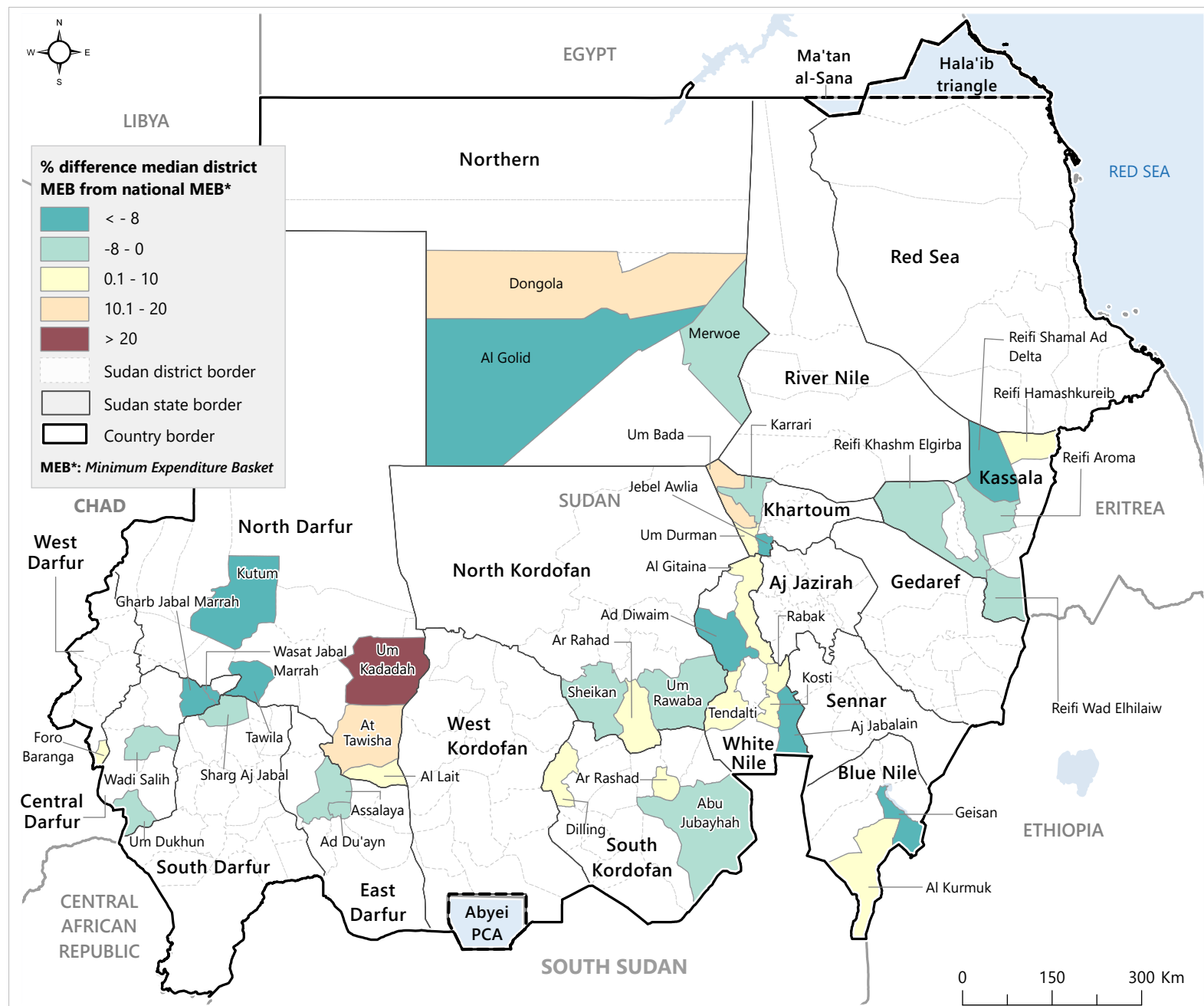
Funded by European Union Humanitarian Aid



### February 2026 MEB key findings

- The **national MEB** without top-up items **increased by 6% compared to January 2026**, while remaining **25% higher than** in February 2025, indicating an **overall MEB upward trend** over the past year.
- The month-on-month increase of MEB (without top-up) was primarily driven by price increases of the **food items (+9%), household items (+5%), and hygiene items (+4%)** components of the MEB between January and February 2026.
- In February 2026, **North Darfur state registered the highest MEB without top-up items (554,417 SDG), recording an increase of 5% from January 2026 (529,549 SDG).** The difference from the national MEB without top-up items for North Darfur state in February 2026 was recorded at +8%.
- At locality level, high MEB values without top-up items were recorded in **Um Kadadah (630,715 SDG) and At Tawisha (586,409 SDG) in North Darfur state and Dongola (568,801 SDG) in Northern state.** These figures represent variations of 22%, 14%, and 14%, respectively, above the national MEB value.
- Finally, the highest variances in the monthly cost of the MEB (without top-up items) between January and February 2026 in the assessed localities were reported in Sharg Aj Jabal (+10%) in South Darfur state, Um Durman (+8%), in Khartoum state and Reifi Aroma (+8%) in Kassala state.

**Map3: % difference of locality level median MEB from national median MEB**



### Availability of food items

Overall, interviewed vendors reported **limited or no availability of some key monitored food items** in their markets, notably **goat meat** (15%), **fresh milk** (13%), and **sorghum** (12%). In parallel, vendors (13%) across assessed localities reported **difficulties in obtaining key food commodities**, particularly **sugar** (22%), **onion** (18%), and **milk** (17%).

At the state level, **40%** of the interviewed vendors in **Blue Nile** state reported **limited to no availability** of most of the assessed food items, notably milk, goat meat, onions, cow meat and sugar.

### Evolution of prices

At the national level, the median **cost of the food components in the MEB increased** by 8 USD (24,330 SDG) from January 2026 (214,039 SDG) to February 2026 (234,053 SDG).

At the state level, the **highest recorded food MEB** was in **White Nile** (272,798 SDG), followed by **Kassala** (265,033 SDG), and **North Kordofan** (259,827 SDG).

The largest month-on-month **increases** were observed in **West Darfur** (+34%), **South Darfur** (+19%), **West Kordofan** (+11%), and **Khartoum** (+10%).

Food price evolution varied across localities, with the **highest MEB food costs observed in Um Bada** (Khartoum), **Dongola** (Northern), and **Um Kadadah** (North Darfur). The difference from the national MEB for the food costs was **+36%**, **+35%**, and **+33%** in the three mentioned localities, respectively.

The increase in the food MEB was primarily **driven by increases in onion** (25%), **sorghum** (18%), **sugar** (15%),

**vegetable oil** (8%), **cow meat** (7%), **fresh milk** (4%), and **goat meat** (2%) prices.

At the state level, **onion** prices have surged sharply in **South Kordofan** (+50%), **Khartoum** (+20%), and **North Kordofan** (+17%). **Vegetable oil** prices have surged in **West Darfur** (+78%), **South Darfur** (+59%), and **North Darfur** (+45%).

**Goat meat** prices have increased in all states, except **West Kordofan**, where

they decreased, or remained unchanged in **North and Central Darfur**. A similar pattern was observed for **sorghum**, where prices recorded increases except in **White Nile, Blue Nile, and East Darfur**, where they decreased or remained unchanged.

Finally, **dried tomato** is the only food item to register a **decrease** (-10%) since January 2026.

### Average stock and restock period reported by the vendors



**5 days**

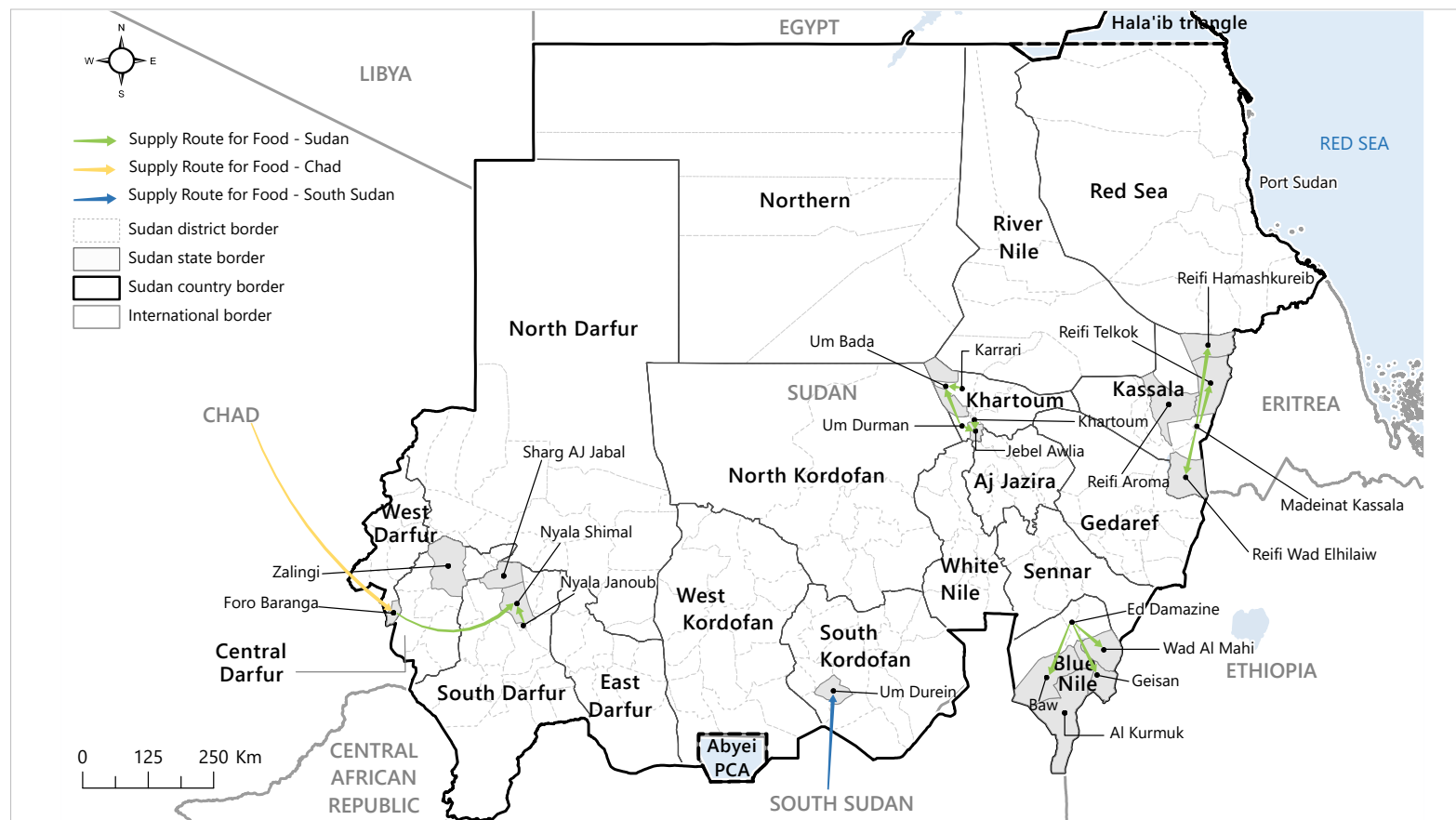
Average time reported by vendors to **stock food items.**



**1 day**

Average time reported by vendors to **restock food items.**

Map4: Main supply routes for food items (from supplier to vendor)



### Availability of NFIs

In February, a majority of vendors reported **limited to no availability** of **LPG refill** (46%), **LPG cylinder** (45%), and **water containers** (45%).

At the state level, more than **50%** of interviewed vendors in **Blue Nile** reported no availability of some key commodities, of **gas cylinders and refills**, as sellers could not be identified due to unavailability during data collection.

Vendors reported limited availability of multiple items, including sanitary pads (75%), water containers (70%), water supply (64%), and body soap (50%).

### Evolution of NFI prices

At the national level, the median cost of the **household items MEB without top up increased by 5%** (+7,396 SDG), rising from 158,050 SDG in January 2026 to 165,446 SDG in February 2026. The increase is driven by increase **gas cylinder (+17%), gas refill (4%), water supply (+3%), and water container (+2%)**.

In parallel, the **hygiene component of the MEB increased by 4%** in February 2026. The items that increased are **Toothpaste & toothbrush (25%) and Body soap (14%)** mainly due reported unavailability.

At the state level, the **highest NFIs MEB without top up** were recorded in **West Kordofan, North Darfur, and East Darfur** with increases of **5%, 18%, and 3%** in February, compared to January 2026.

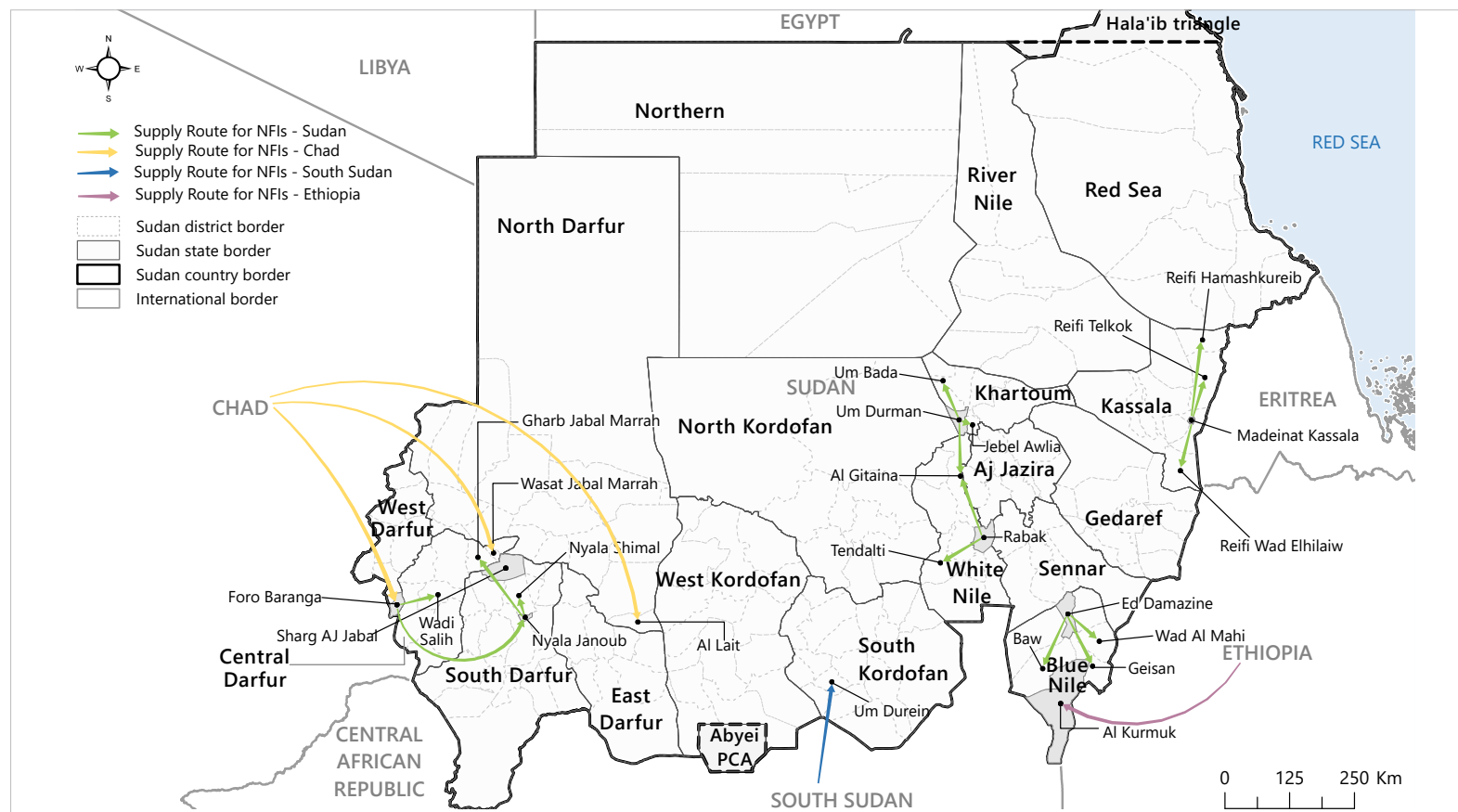
### % of interviewed vendors reporting limited to no availability of NFI commodities at time of data collection:

Gas refill	46%
Gas cylinder	45%
Water container	45%
Sanitary pads	22%
Liquid dish soap	17%
Water supply	17%
Body soap	16%

### Reported time required by vendors to stock and restock household NFIs and hygiene NFIs at the time of data collection:

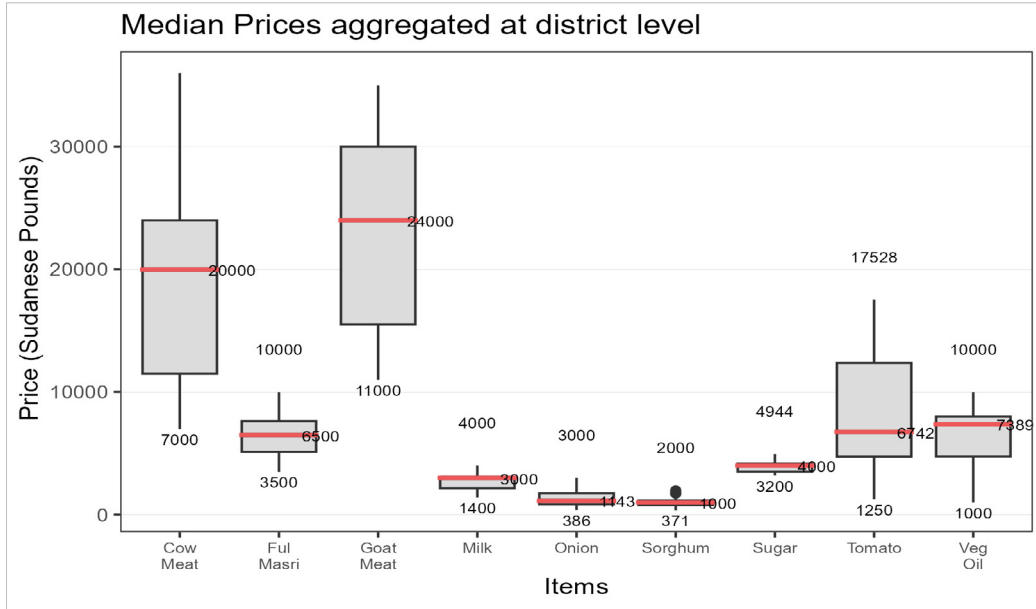
	Household NFIs	Hygiene NFIs
Stock	8 days	11 days
Restock	2 days	2 days

### Map5: Main supply routes for NFIs (from supplier to vendor)

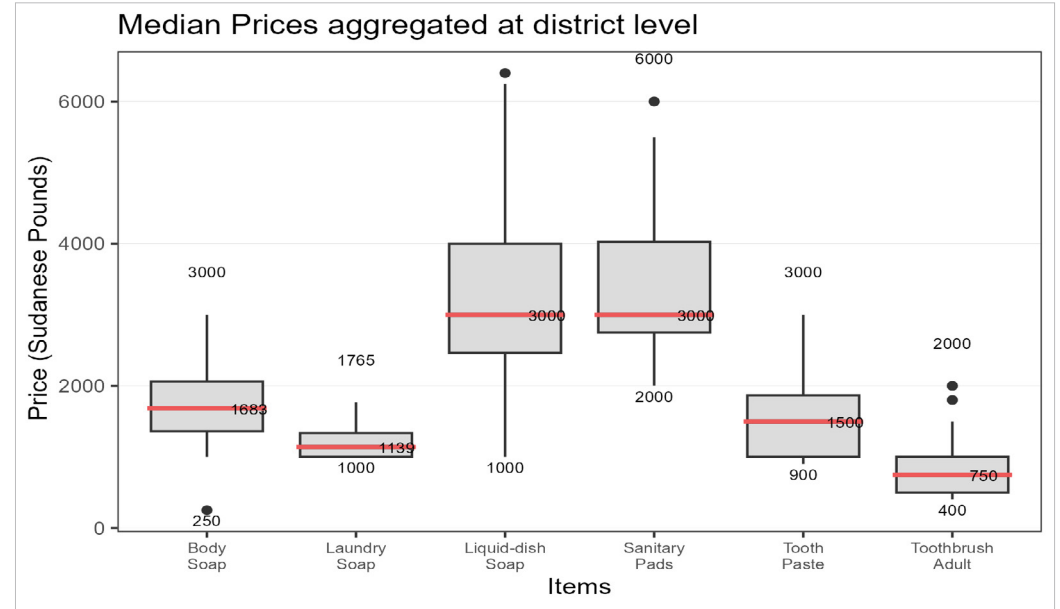


## Distribution of prices

### Food Items



### Hygiene Items (NFIs)



### Household Items (NFIs)



## MEB by locality

Location	Median MEB cost (SDG)	% change since Jan 2026	Median MEB with top up (SDG)	Median MEB with top up (USD)
<b>Khartoum</b>				
Jebel Awlia	462,624	▲ 1	498,624	200
Um Bada	567,793	▼ -4	641,543	258
Karrari	483,545	▼ -6	554,379	223
Um Durman	528,849	▲ 8	600,099	241
<b>North Darfur</b>				
At Tawisha	586,409	▲ 7	669,909	269
Kutum	429,511	▲ 2	512,011	206
Um Kadadah	630,715	▲ 5	711,215	286
Al Lait	556,917	▲ 3	630,667	253
Tawila	458,067	▼ -7	539,789	217
<b>South Darur</b>				
Sharg Aj Jabal	504,715	▲ 10	591,715	238
<b>West Darfur</b>				
Foro Baranga	540,794	na	615,294	247
<b>East Darfur</b>				
Ad Du'ayn	496,302	▼ -1	577,302	232
Assalaya	492,858	▲ 1	576,858	232
<b>Central Darfur</b>				
Gharb Jabal Marrah	378,844	▲ 3	469,344	189
Um Dukhun	478,087	na	551,837	222
Wadi Salih	478,879	▼ -3	546,518	220
Wasat Jabal Marrah	467,480	▼ -1	552,980	222
<b>South Kordofan</b>				
Abu Jubayhah	507,659	▲ 7	580,659	233
Ar Rashad	524,130	▼ -5	598,630	241
Dilling	561,200	na	635,700	256
<b>Blue Nile</b>				
Al Kurmuk	528,329	▼ -3	607,829	244
Geisan	453,665	na	527,415	212
<b>White Nile</b>				
Ad Diwaim	470,378	▼ -10	514,128	207
Rabak	529,983	▼ -4	591,983	238
Kosti	517,675	▼ -4	590,175	237
Tendalti	542,493	0	616,243	248
Al Gitaina	527,201	▼ -3	599,051	241
Aj Jabalain	412,065	▼ -3	507,065	204
<b>Kassala</b>				
Reifi Aroma	485,020	▲ 8	557,520	224
Reifi Shamal Ad Delta	442,011	na	514,761	207
Reifi Hamashkureib	525,367	na	596,867	240
Reifi Khashm Elgirba	491,303	▼ -11	567,803	228
Reifi Wad Elhilaw	491,075	▲ 3	563,575	227

Location	Median MEB cost (SDG)	% change since Jan 2026	Median MEB with top up (SDG)	Median MEB with top up (USD)
<b>Northern</b>				
Dongola	568,801	na	660,051	265
Al Golid	453,851	na	550,101	221
Merwoe	496,445	na	622,695	250
<b>North Kordofan</b>				
Um Rawaba	494,705	▲ 6	568,705	229
Sheikan	513,455	▼ -12	552,621	222
Ar Rahad	533,611	▲ 1	605,555	243
<b>Overall</b>	<b>515,146</b>	<b>▲ 6%</b>	<b>589,646</b>	<b>237</b>

## MEB - Food Items

Location	Median Food cost (SDG)	% change since Jan 2026	Median food cost in (USD)
<b>Khartoum</b>			
Jebel Awlia	232,477	▲ 3	93
Um Bada	318,761	▼ -3	128
Karrari	207,483	0	83
Um Durman	233,036	▲ 4	94
<b>North Darfur</b>			
At Tawisha	228,715	▲ 7	92
Kutum	197,047	▼ -5	79
Um Kadadah	310,770	▲ 7	125
Al Lait	221,139	▼ -1	89
Tawila	187,072	▲ 1	75
<b>South Darur</b>			
Sharg Aj Jabal	210,034	▲ 14	84
<b>West Darfur</b>			
Foro Baranga	259,347	na	104
<b>East Darfur</b>			
Ad Du'ayn	203,589	▼ -5	82
Assalaya	190,045	0	76
<b>Central Darfur</b>			
Gharb Jabal Marrah	119,550	▲ 5	48
Um Dukhun	199,307	na	80
Wadi Salih	163,211	▲ 4	66
Wasat Jabal Marrah	152,017	▼ -5	61
<b>South Kordofan</b>			
Abu Jubayhah	252,441	▲ 9	101
Ar Rashad	255,672	▲ 6	103
Dilling	276,887	na	111
<b>Blue Nile</b>			
Al Kurmuk	254,116	▼ -5	102
Geisan	211,693	na	85
<b>White Nile</b>			
Ad Diwaim	241,901	▼ -8	97
Rabak	276,416	0	111
Kosti	266,361	▲ 9	107
Tendalti	298,286	▲ 7	120
Al Gitaina	278,288	▲ 3	112
Aj Jabalain	180,418	▲ 1	73
<b>Kassala</b>			
Reifi Aroma	256,623	▲ 16	103
Reifi Shamal Ad Delta	223,586	na	90
Reifi Hamashkureib	284,298	na	114
Reifi Khashm Elgirba	263,639	▼ -5	106
Reifi Wad Elhilaiw	267,085	▲ 4	107

Location	Median Food cost (SDG)	% change since Jan 2026	Median food cost in (USD)
<b>Northern</b>			
Dongola	315,836	na	127
Al Golid	196,104	na	79
Merwoe	246,498	na	99
<b>North Kordofan</b>			
Um Rawaba	249,541	▲ 6	100
Sheikan	255,594	▼ -21	103
Ar Rahad	230,780	▼ -1	93
<b>Overall</b>	<b>234,053</b>	<b>▲ 9%</b>	<b>94</b>

## MEB - NFIs

Location	Median NFIs cost (SDG)	% change since Jan 2026	Median NFIs with top up (SDG)	Median NFIs with top up (USD)
<b>Khartoum</b>				
Jebel Awlia	114,500	▼ - 2	150,500	60
Um Bada	133,384	▼ - 7	207,134	83
Karrari	160,415	▼ -13	231,249	93
Um Durman	180,167	▲ 16	251,417	101
<b>North Darfur</b>				
At Tawisha	242,048	▲ 10	325,548	131
Kutum	116,817	▲ 13	199,317	80
Um Kadadah	204,298	▲ 4	284,798	114
Al Lait	220,131	▲ 7	293,881	118
Tawila	155,348	▼ -16	237,070	95
<b>South Darfur</b>				
Sharg Aj Jabal	179,033	▲ 13	266,033	107
<b>West Darfur</b>				
Foro Baranga	165,800	na	240,300	97
<b>East Darfur</b>				
Ad Du'ayn	177,067	▲ 3	258,067	104
Assalaya	187,167	▲ 3	271,167	109
<b>Central Darfur</b>				
Gharb Jabal Marrah	143,648	▲ 4	234,148	94
Um Dukhun	163,133	na	236,883	95
Wadi Salih	200,021	▼ - 8	267,660	108
Wasat Jabal Marrah	199,817	▲ 1	285,317	115
<b>South Kordofan</b>				
Abu Jubayhah	139,571	▲ 10	212,571	85
Ar Rashad	152,810	▼ -16	227,310	91
Dilling	168,667	na	243,167	98
<b>Blue Nile</b>				
Al Kurmuk	158,567	▼ - 3	238,067	96
Geisan	126,326	na	200,076	80
<b>White Nile</b>				
Ad Diwaim	112,830	▼ -19	156,580	63
Rabak	137,921	▼ -12	199,921	80
Kosti	135,667	▼ -17	208,167	84
Tendalti	128,561	▼ - 8	202,311	81
Al Gitaina	133,267	▼ -11	205,117	82
Aj Jabalain	116,000	▼ - 9	211,000	85
<b>Kassala</b>				
Reifi Aroma	112,750	▲ 2	185,250	74
Reifi Shamal Ad Delta	102,778	na	175,528	71
Reifi Hamashkureib	125,422	na	196,922	79
Reifi Khashm Elgirba	112,017	▼ - 24	188,517	76
Reifi Wad Elhilaiw	108,342	▲ 2	180,842	73

Location	Median NFIs cost (SDG)	% change since Jan 2026	Median NFIs with top up (SDG)	Median NFIs with top up (USD)
<b>Northern</b>				
Dongola	137,318	na	228,568	92
Al Golid	142,100	na	238,350	96
Merwoe	134,300	na	260,550	105
<b>North Kordofan</b>				
Um Rawaba	129,517	▲ 9	203,517	82
Sheikan	142,213	▼ - 6	181,380	73
Ar Rahad	187,184	▲ 2	259,128	104
<b>Overall</b>	<b>165,446</b>	<b>▲ 5%</b>	<b>239,946</b>	<b>96</b>

## MARKET FUNCTIONALITY SCORE (MFS) PER LOCALITY\*

Location	Accessibility	Availability	Affordability	Resilience	Infrastructure	TOTAL SCORE
<b>Max Score</b>	<b>25</b>	<b>30</b>	<b>15</b>	<b>20</b>	<b>10</b>	<b>100</b>
<b>Khartoum</b>						
Jebel Awlia	25	24	9	20	10	88
Um Bada	25	21	3	10	10	69
Bahri	25	20	9	11	10	74
Karrari	25	24	10	13	10	82
Um Durman	25	26	12	11	9	83
Khartoum - 01007	25	17	12	11	10	75
<b>North Darfur</b>						
At Tawisha	25	23	5	11	9	72
Kutum	4	22	6	11	8	51
Um Kadadah	21	21	4	8	10	62
Al Lait	25	23	4	6	8	66
Tawila	25	24	7	13	7	76
<b>South Darfur</b>						
Sharg Aj Jabal	25	24	3	20	7	79
Beliel	25	20	7	11	10	73
Nyala Shimal	25	21	7	9	7	68
Nyala Janoub	16	21	5	11	7	60
<b>West Darfur</b>						
Foro Baranga	9	18	7	8	7	48
<b>East Darfur</b>						
Ad Du'ayn	15	24	7	3	7	55
Assalaya	25	24	10	11	7	78
<b>Central Darfur</b>						
Gharb Jabal	25	23	4	9	9	69
Um Dukhun	25	23	8	6	7	68
Wadi Salih	21	24	3	11	7	66
Zalingi	na	18	na	na	na	na
Wasat Jabal	15	22	3	6	7	52
<b>South Kordofan</b>						
Abu Jubayhah	25	24	10	20	7	85
Um Durein	25	21	11	4	7	68
Ar Rashad	25	24	9	19	9	86
Dilling	7	24	3	4	8	46
Heiban	25	24	7	11	7	74
Delami	13	21	3	7	7	50
<b>Blue Nile</b>						
Baw	na	18	5	10	na	na
Ed Damazine	na	20	5	10	na	na
Al Kurmuk	na	15	4	4	na	na
Geisan	na	22	7	11	na	na
Wad Al Mahi	na	21	9	14	na	na

\*Below-average scores for the different pillars and MFS have been highlighted in red.

Location	Accessibility	Availability	Affordability	Resilience	Infrastructure	TOTAL SCORE
<b>Max Score</b>	<b>25</b>	<b>30</b>	<b>15</b>	<b>20</b>	<b>10</b>	<b>100</b>
<b>White Nile</b>						
Ad Diwaim	25	26	10	10	10	81
Um Rimta	25	11	7	20	8	70
Rabak	25	24	3	16	10	78
Kosti	25	27	7	10	10	79
Tendalti	25	21	9	15	9	79
Al Gitaina	25	26	10	10	10	80
Aj Jabalain	25	24	10	9	10	78
<b>Kassala</b>						
Reifi Gharb Kassala	19	19	10	2	10	59
Reifi Aroma	25	20	10	7	9	71
Reifi Shamal Ad	25	24	8	6	9	71
Reifi Hamashkureib	25	19	8	9	10	71
Reifi Telkok	25	19	8	0	9	61
Reifi Khashm	25	27	7	6	9	74
Reifi Wad Elhilaiv	25	25	4	8	9	70
<b>Northern</b>						
Al Burgaig	25	21	7	9	10	71
Dongola	16	24	5	4	10	59
Al Golid	25	25	10	6	10	76
Merwoe	25	21	11	16	10	83
<b>North Kordofan</b>						
Um Rawaba	25	26	7	4	9	71
Sheikan	25	26	7	7	10	74
Ar Rahad-1303	22	23	8	5	10	68
<b>West Kordofan</b>						
As Salam - WK	9	21	11	9	7	57
As Sunut	22	22	5	4	7	59

## MEDIAN FOOD ITEM PRICES PER LOCALITY (in SDG)

Location	Sorghum	Onions	Ful masri	Veg oil	Milk	Cow meat	Goat meat	Tomato	Sugar
Unit	1kg	1kg	1L	1L	1kg	1kg	1kg	1kg	1kg
<b>Khartoum</b>									
Jebel Awlia	na	1,000	8,000	8,000	3,000	20,000	na	na	3,200
Um Bada	2,000	857	7,750	7,500	3,600	21,000	29,000	na	3,300
Bahri	1,143	1,143	3,500	7,500	3,000	19,000	na	na	3,500
Karrari	714	514	na	8,000	3,000	22,000	na	na	3,300
Um Durman	na	na	na	8,000	3,000	28,000	35,000	1,500	4,000
Khartoum	na	571	7,000	8,000	na	24,000	na	na	4,000
<b>North Darfur</b>									
At Tawisha	1,000	2,697	6,750	3,333	2,000	12,000	14,000	8,989	4,944
Kutum	800	2,000	10,000	5,000	na	10,000	11,000	5,997	4,494
Um Kadadah	1,857	2,921	10,000	5,000	na	16,000	16,000	8,989	na
Al Lait	1,000	2,921	6,500	3,167	na	12,000	14,000	6,742	4,494
Tawila	700	3,000	6,000	4,833	2,000	8,000	13,000	4,747	4,494
<b>South Darfur</b>									
Sharg Aj Jabal	1,214	529	8,250	1,775	2,300	8,500	11,500	4,750	4,150
Beliel	1,143	na	na	na	na	na	na	na	na
Nyala Shimal	1,000	2,250	5,250	4,250	4,000	10,000	16,000	6,875	4,350
Nyala Janoub	1,000	1,714	6,000	4,688	3,000	9,000	16,000	4,494	4,400
<b>West Darfur</b>									
Foro Baranga	1,200	3,000	4,000	8,000	3,000	10,000	15,500	6,742	4,494
<b>East Darfur</b>									
Ad Du'ayn	957	2,472	7,150	3,583	3,300	7,450	14,600	5,056	4,200
Assalaya	1,071	386	7,500	2,350	2,600	7,500	12,500	5,625	4,750
<b>Central Darfur</b>									
Gharb Jabal Marrah	400	na	4,750	1,000	na	7,000	12,000	2,809	4,045
Um Dukhun	725	1,750	7,000	3,000	na	10,500	20,000	8,989	4,157
Wadi Salih	750	1,000	10,000	3,000	1,750	10,000	14,000	4,747	4,045
Zalingi	1,000	1,500	5,000	1,500	na	12,000	16,000	5,618	4,045
Wasat Jabal Marrah	371	1,911	4,000	5,333	na	8,000	12,000	3,750	4,494
<b>South Kordofan</b>									
Abu Jubayhah	571	1,429	8,000	10,000	3,000	18,000	32,000	13,483	4,045
Um Durein	929	na	7,000	6,500	na	11,000	17,500	12,360	4,750
Ar Rashad	714	1,714	8,000	8,000	2,000	20,000	26,000	15,730	3,500
Dilling	1,143	1,714	3,500	5,000	na	14,000	23,000	15,730	4,000
Heiban	1,000	na	8,000	7,000	na	16,000	20,000	13,483	na
Delami	857	na	na	8,000	na	13,000	15,000	na	na
<b>Blue Nile</b>									
Baw	857	857	6,500	9,000	1,400	24,000	24,000	na	4,000
Ed Damazine	786	857	na	9,000	1,400	22,000	26,000	na	4,000
Al Kurmuk	1,143	1,429	4,000	6,500	4,000	24,000	27,000	na	3,500
Ar Rusayris	714	1,143	na	8,500	3,000	20,000	26,000	4,800	4,000
Geisan	714	1,429	6,000	8,000	na	20,000	24,000	13,483	3,500
Wad Al Mahi	714	1,429	6,000	8,000	na	20,000	24,000	12,921	3,500

Location	Sorghum	Onions	Ful masri	Veg oil	Milk	Cow meat	Goat meat	Tomato	Sugar
Unit	1kg	1kg	1L	1L	1kg	1kg	1kg	1kg	1kg
<b>White Nile</b>									
Ad Diwaim	na	857	5,250	8,000	2,000	24,000	34,500	na	3,500
Um Rimta	1,143	1,000	na	na	na	na	na	na	3,200
Rabak	1,143	857	6,000	9,000	3,000	20,000	26,000	12,500	3,400
Kosti	1,143	1,000	5,000	8,000	2,700	22,000	32,000	10,000	3,200
Tendalti	1,143	857	7,000	7,000	3,000	20,000	30,000	17,528	4,045
Al Gitaina	1,143	857	8,000	8,000	3,000	28,000	29,000	11,236	3,700
Aj Jabalain	714	1,143	7,000	4,500	3,000	24,000	29,000	1,250	3,500
<b>Kassala</b>									
Reifi Gharb Kassala	1,429	1,429	7,000	8,750	na	24,000	na	na	3,847
Reifi Aroma	1,357	429	na	7,000	2,000	24,000	28,000	na	3,500
Reifi Shamal Ad	1,143	857	5,000	8,000	2,200	20,000	30,000	1,600	3,500
Reifi Hamashkureib	943	1,429	6,250	8,000	2,500	36,000	19,400	16,489	3,300
Reifi Telkok	na	2,247	na	10,000	2,400	20,000	32,000	na	3,596
Reifi Khashm	1,714	857	na	7,000	2,900	20,000	na	1,875	3,400
Reifi Wad Elhilaiv	857	714	na	9,000	2,000	20,000	28,000	16,615	3,300
<b>North Kordofan</b>									
Um Rawaba	929	857	5,000	7,000	3,000	24,000	30,000	10,625	3,500
Sheikan	1,143	1,143	5,500	8,000	4,000	20,000	28,000	na	3,500
Ar Rahad	786	1,000	6,000	8,000	4,000	24,000	30,000	na	3,500
<b>Northern</b>									
Al Burgaig	na	na	na	7,389	3,000	24,000	32,000	4,375	4,000
Dongola	1,714	714	na	8,000	2,700	24,000	30,000	10,000	4,000
Al Golid	857	500	5,000	7,000	2,000	24,000	30,000	1,750	3,500
Merwoe	na	643	6,000	7,750	3,000	28,000	34,000	na	3,500
Ar Rahad	714	857	6,000	8,000	4,000	24,000	30,000	8,573	3,500
<b>West Kordofan</b>									
As Salam - WK	1,000	2,429	10,000	2,800	2,400	10,000	14,000	na	4,500
As Sunut	714	2,857	na	3,000	na	14,000	16,000	na	3,933
<b>Overall</b>	<b>1,014</b>	<b>1,429</b>	<b>6,250</b>	<b>7,569</b>	<b>2,850</b>	<b>15,000</b>	<b>21,500</b>	<b>6,742</b>	<b>4,023</b>

## MEDIAN NON FOOD ITEM PRICES PER LOCALITY (in SDG)

Location	Gas cylinder	Gas refill	Water Container	Water supply price	Body soap	Toothpaste	Toothbrush	Laundry soap	Liquid dish soap	Sanitary pads price
Unit	12.5L	4L	20L	20L	125g	100ml	1 piece	200g	600ml	8 pieces
<b>Khartoum</b>										
Jebel Awlia	33,000	66,000	3,000	13	1,000	1,000	500	1,000	2,500	2,500
Um Bada	na	68,000	na	na	1,364	1,587	500	1,111	2,500	2,500
Bahri	na	60,000	na	na	1,500	1,000	1,000	1,000	1,714	4,000
Karrari	na	60,000	3,333	20	1,500	1,587	500	1,177	2,769	3,000
Um Durman	65,000	65,000	na	25	1,000	1,000	500	1,000	2,500	3,500
Khartoum	60,000	75,000	na	na	1,500	1,000	500	1,000	3,500	2,500
<b>North Darfur</b>										
At Tawisha	na	na	16,000	33	2,000	2,381	1,000	1,333	4,000	4,000
Kutum	na	na	15,000	7	2,250	1,000	1,000	1,500	5,000	5,500
Um Kadadah	na	na	13,000	25	2,000	2,381	1,000	1,333	5,250	5,000
Al Lait	na	na	na	29	2,000	2,381	1,000	1,056	6,250	3,500
Tawila	na	na	14,222	na	2,000	2,381	1,000	1,450	6,000	5,000
<b>South Darfur</b>										
Sharg Aj Jabal	na	na	19,500	21	1,850	900	1,300	1,100	3,750	3,800
Beliel	na	na	na	na	na	na	na	na	na	na
Nyala Shimal	na	na	na	na	2,000	1,500	1,000	1,500	na	na
Nyala Janoub	na	na	na	na	2,083	na	750	1,347	na	na
<b>West Darfur</b>										
Foro Baranga	na	na	na	na	1,000	1,500	1,000	1,500	4,000	5,000
<b>East Darfur</b>										
Ad Du'ayn	na	na	13,500	19	2,850	1,550	850	1,400	3,200	2,850
Assalaya	na	na	16,500	21	2,250	2,250	1,350	1,650	3,850	4,350
<b>Central Darfur</b>										
Gharb Jabal Marrah	na	na	23,000	15	1,500	2,381	500	1,000	5,000	4,500
Um Dukhun	na	na	na	15	2,500	2,800	1,000	1,111	6,400	6,000
Wadi Salih	na	na	139	25	1,643	1,941	1,000	1,333	5,700	5,000
Zalingi	na	na	na	na	1,500	1,500	500	1,000	4,000	na
Wasat Jabal Marrah	na	na	18,000	25	2,250	1,250	1,000	1,400	3,000	3,500
<b>South Kordofan</b>										
Abu Jubayhah	na	na	5,500	13	2,500	1,905	1,000	1,333	4,000	3,000
Um Durein	na	na	na	na	2,000	na	1,250	1,167	5,750	4,750
Ar Rashad	na	na	7,000	15	2,500	1,544	500	1,500	3,000	3,500
Dilling	na	na	7,000	19	2,250	1,500	1,000	1,250	5,500	na
Heiban	na	na	12,000	35	2,000	2,000	1,500	1,333	5,000	3,000
Delami	na	na	17,000	na	3,000	3,000	2,000	1,000	5,000	na
<b>Blue Nile</b>										
Baw	na	na	8,000	na	2,273	1,500	600	1,765	2,727	na
Ed Damazine	na	na	8,000	15	2,273	1,200	500	1,765	3,182	na
Al Kurmuk	na	na	12,000	na	3,000	2,000	1,800	1,600	2,500	2,800
Geisan	na	na	na	15	1,000	1,000	500	1,177	1,500	2,000
Wad Al Mahi	na	na	6,000	na	1,000	1,000	500	1,177	2,182	na

## MEDIAN NON FOOD ITEM PRICES PER LOCALITY (in SDG)

Location	Gas cylinder	Gas refill	Water Container	Water supply price	Body soap	Toothpaste	Toothbrush	Laundry soap	Liquid dish soap	Sanitary pads price
Unit	12.5L	4L	20L	20L	125g	100ml	1 piece	200g	600ml	8 pieces
<b>White Nile</b>										
Ad Diwaim	40,000	68,000	3,750	10	1,705	1,000	500	1,177	1,750	3,000
Um Rimta	na	na	na	na	na	na	500	1,177	na	na
Rabak	56,000	65,000	6,000	na	1,700	1,587	500	1,111	2,500	3,000
Kosti	67,500	68,000	5,000	na	1,500	900	500	1,000	3,000	3,000
Tendalti	na	na	na	na	1,000	1,000	400	1,111	2,727	2,500
Al Gitaina	70,000	65,000	1,850	na	1,000	1,000	500	1,000	1,500	5,000
Aj Jabalain	90,000	60,000	5,000	13	1,500	1,000	500	1,000	1,500	2,000
<b>Kassala</b>										
Reifi Gharb Kassala	na	na	6,500	na	1,500	1,200	1,300	1,750	1,100	4,100
Reifi Aroma	na	60,000	5,000	13	1,000	1,000	na	1,000	1,000	3,000
Reifi Shamal Ad Delta	na	75,000	5,250	8	1,471	1,000	500	1,111	1,714	2,750
Reifi Hamashkureib	na	na	4,000	13	1,667	1,482	500	1,177	1,714	na
Reifi Telkok	na	na	5,556	11	2,250	na	1,000	1,111	2,571	na
Reifi Khashm Elgirba	67,500	65,000	9,000	13	1,000	1,000	750	1,100	1,000	2,000
Reifi Wad Elhilaiw	na	70,000	5,000	13	250	1,500	700	1,177	2,250	2,500
<b>North Kordofan</b>										
Um Rawaba	69,000	na	5,000	13	1,750	1,000	600	1,000	3,250	4,000
Sheikan	35,000	75,000	4,167	na	1,705	1,587	1,000	1,429	2,500	2,500
Ar Rahad	na	na	4,444	25	1,477	1,587	500	1,111	3,036	3,000
<b>West Kordofan</b>										
As Salam - WK	na	na	10,000	na	1,750	2,344	1,000	1,200	na	2,500
As Sunut	na	na	1,000	25	2,000	1,750	1,100	1,000	6,000	3,500
<b>Northern</b>										
Al Burgaig	na	75,000	na	na	1,042	2,000	500	1,111	2,483	3,000
Dongola	85,000	75,000	na	na	1,068	1,587	1,000	1,333	2,813	3,500
Al Golid	90,000	72,000	na	na	2,000	1,000	500	1,000	3,500	2,500
Merwoe	120,000	72,000	na	na	1,350	1,100	750	1,000	2,400	2,750
<b>Overall</b>	<b>67,500</b>	<b>67,500</b>	<b>7,000</b>	<b>20</b>	<b>1,705</b>	<b>1,500</b>	<b>1,000</b>	<b>1,111</b>	<b>3,525</b>	<b>3,000</b>

## Methodology

The JMMI aims to inform market-based programming in Sudan through monthly monitoring of prices of selected food and NFI items as well as other critical market indicators.

The coverage of the JMMI may vary between months as it depends on the interest of the partner organisations and their field teams' capacities to regularly collect market data. Locations are added once partners willing to cover them are identified, and their field teams are trained. As the initiative is currently being built up, coverage will likely be expanded in future data collection rounds.

Findings presented in this factsheet are based on the JMMI conducted from 5th to 14th February 2026. The factsheet presents an overview of median prices for food and non-food items (NFIs) in the main markets of the localities assessed, a comprehensive breakdown of the cost of the interim Minimum Expenditure Basket (MEB), and the Market Functionality Score (MFS) for the markets assessed at locality level. You can find specific information on the coverage of the current round on page 1. In each assessed location, the aim is to collect at minimum four prices per item from different retailers to ensure quality and consistency of the collected data. In line with the purpose of the JMMI, only the prices of the cheapest available types are recorded for each item. Retailers are selected to interview based on the following criteria:

- Vendors are retailers selling directly to consumers.
- Vendors with weight scales are prioritised when recording prices of dry food items.
- Vendors are representative of the local price level (no wholesaler, vendors or upmarket or luxury goods).
- To the extent possible, the same vendors are revisited in every data collection round.

The data is collected by enumerators familiar with the local market conditions, and have all received comprehensive training prior to the data collection.

The median item prices reported in this factsheet are 'locality medians', designed to minimise the effects of outliers and differing amounts of data among assessed locations. The median prices of all assessed items are calculated within each assessed locality. Because items monitored by WFP was only available as means, these figures have been used to calculate the overall medians at state and national level.

All MEB and price index calculations are created using this method.

- The cost of the Interim MEB is calculated by multiplying the median price of each item in the respective locality by the quantity listed in the table on page 3, adding to it the lump sums listed in the same page.
- In localities where items are not available, the national median is used to calculate the MEB per district, state and at national level. This allows to compare the interim MEB from locality to locality.
- Starting May 2025, the JMMI analysis tables and factsheets present the MEB calculation based on the updated lump sums, as per the data collected by WFP between January and April 2025.

## Challenges and Limitations

- Price data is only indicative for the time frame within which it was collected. Prices may vary between data collection rounds.
- The JMMI data collection tool requests the cheapest available type of each item to be recorded, as availability varies across regions. Therefore, price comparisons across regions may be based on slightly varying products.
- Standardising local unit sizes of dry food and household items is inherently difficult

in Sudan, as many traders sell commodities by volume rather than weight, additionally the same units of measurements varies slightly from one locality to another.

- Due to the challenges of converting some of the unit of measurements the prices based on volume should, if possible, be triangulated with other data sources.

## 2026 JMMI outputs

<b>Factsheet</b>	<b>Analysis</b>
<a href="#">January</a>	<a href="#">January</a>
	<a href="#">February</a>

## Participating agencies

- Africa Relief Committee (ARC)
- Catholic Relief Service (CRS)
- DanChurch Aid (DCA)
- Danish Refugee Council (DRC)
- Global Nafir
- GOAL
- International Rescue Committee (IRC)
- MercyCorps (MC)
- Norwegian Refugee Council (NRC)
- Sudanese Red Crescent Society (SRCS)
- Welthungerhilfe (WHH)

## About the CWG

Created in 2015, the national Sudan Cash Working Group (CWG) serves as the principal coordination forum for all humanitarian cash and voucher assistance (CVA) in Sudan. Composed of over 50 member organizations (UN agencies, local and international NGOs, the Sudanese Red Crescent Society, donors, and financial service providers), the CWG provides technical support to and across sectors, advises on issues related to CVA, and provides evidence and knowledge in response option analysis processes.

## About REACH

REACH Initiative facilitates the development of information tools and products that enhance the capacity of aid actors to make evidence-based decisions in emergency, recovery and development contexts. The methodologies used by REACH include primary data collection and in-depth analysis, and all activities are conducted through inter-agency aid coordination mechanisms. REACH is a joint initiative of IMPACT Initiatives, ACTED and the United Nations Institute for Training and Research - Operational Satellite Applications Programme (UNITAR-UNOSAT). For more information, please visit our website. You can contact us directly at [geneva@reachinitiative.org](mailto:geneva@reachinitiative.org) and follow us on Twitter @ REACH\_info.