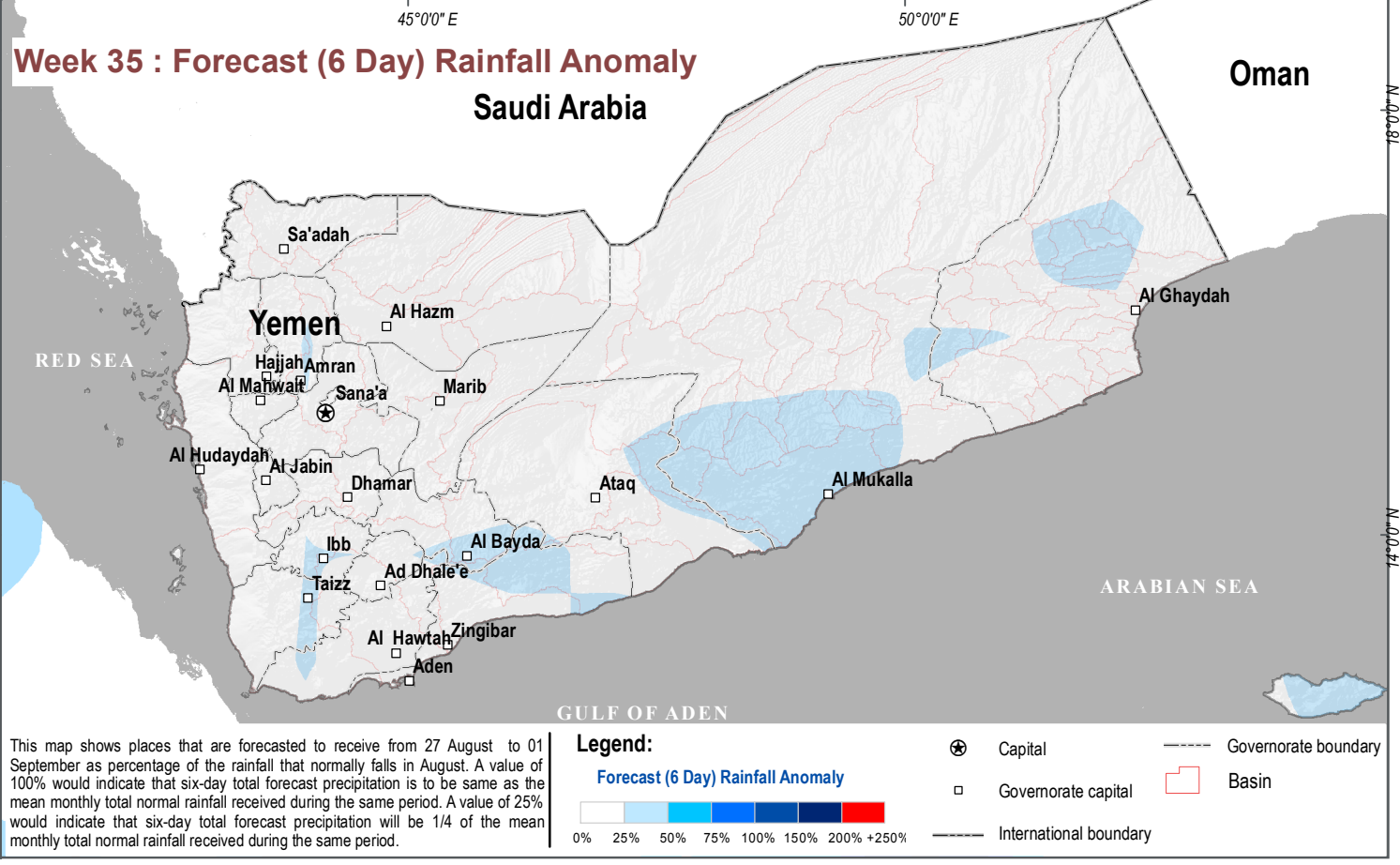
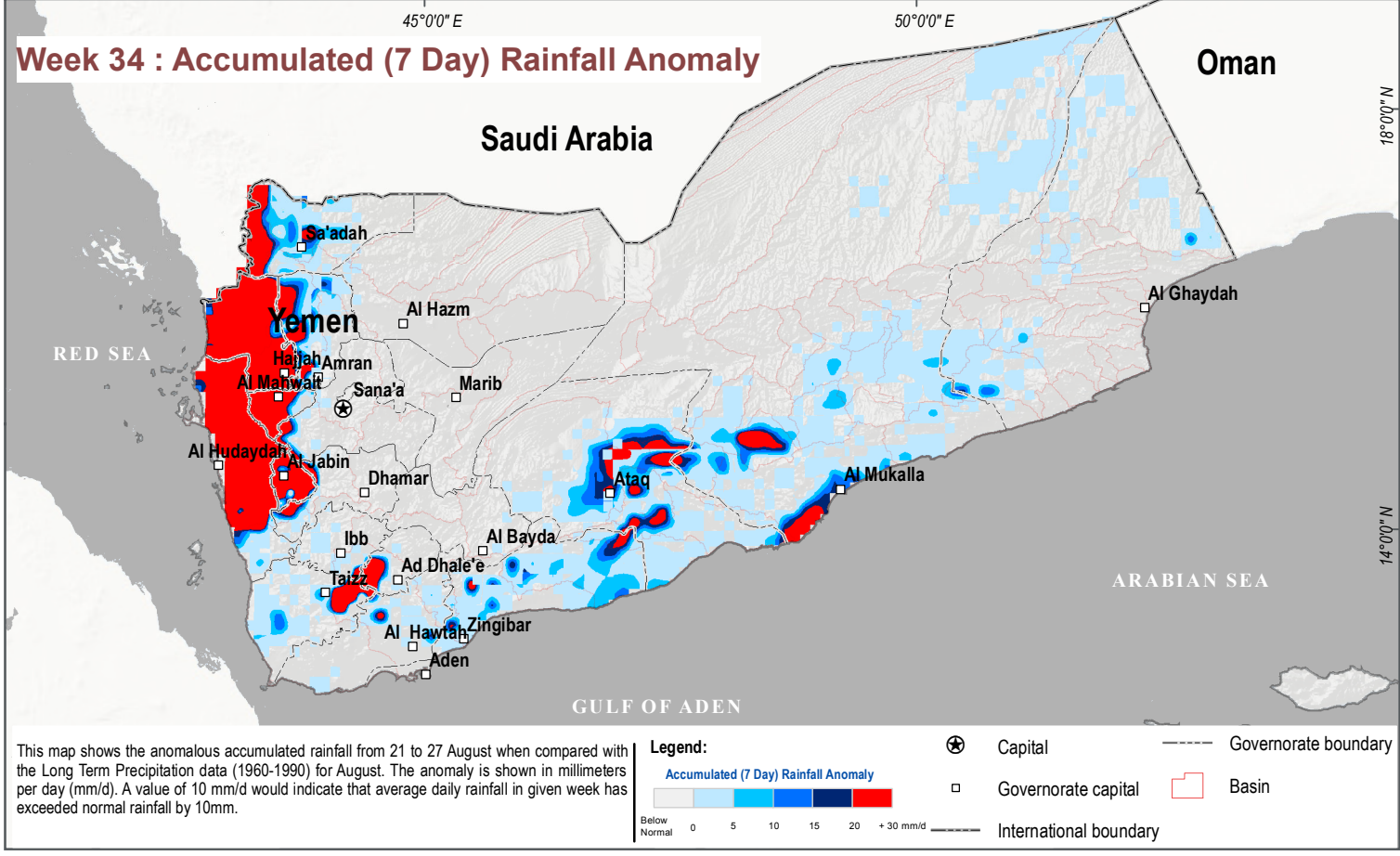
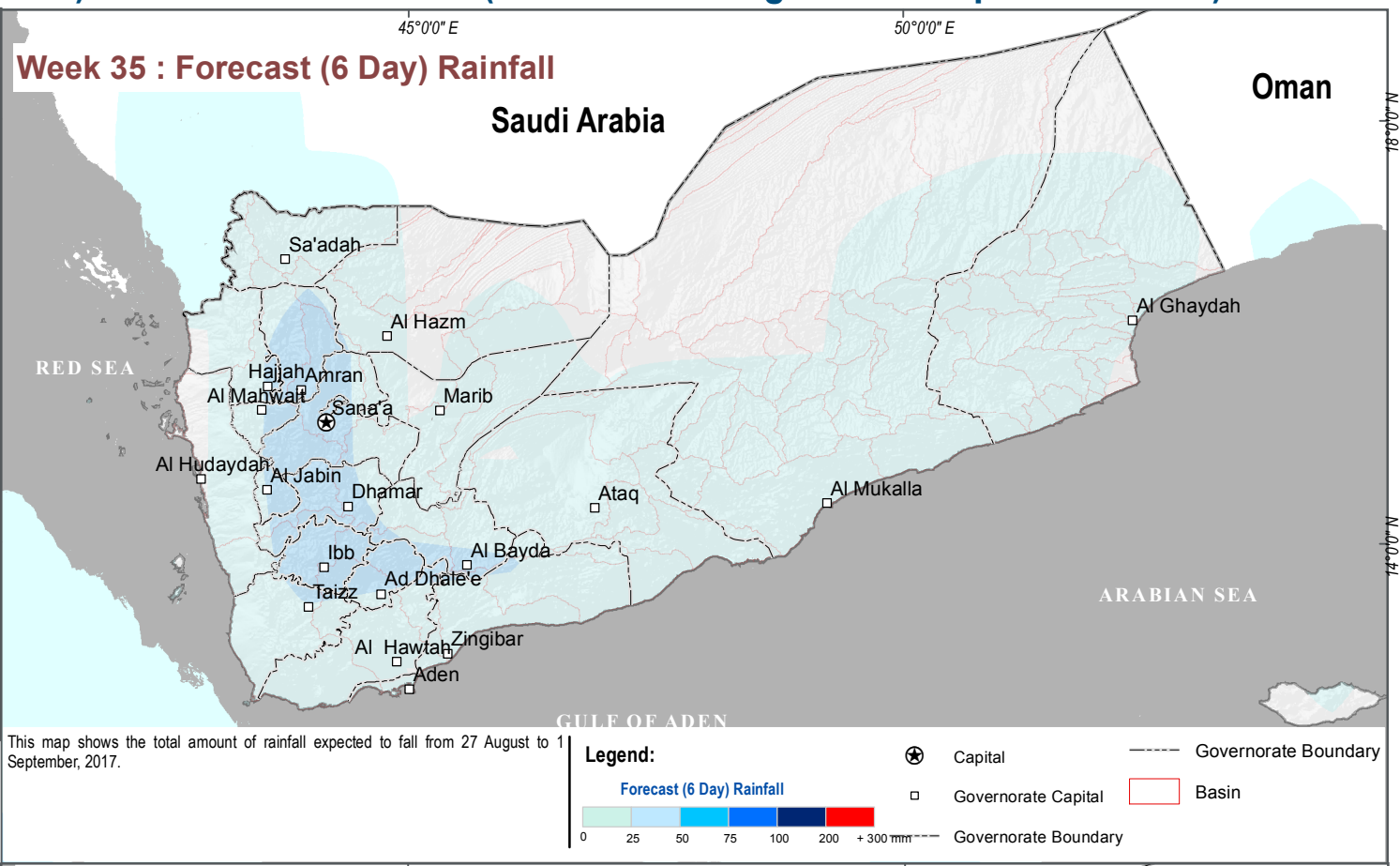
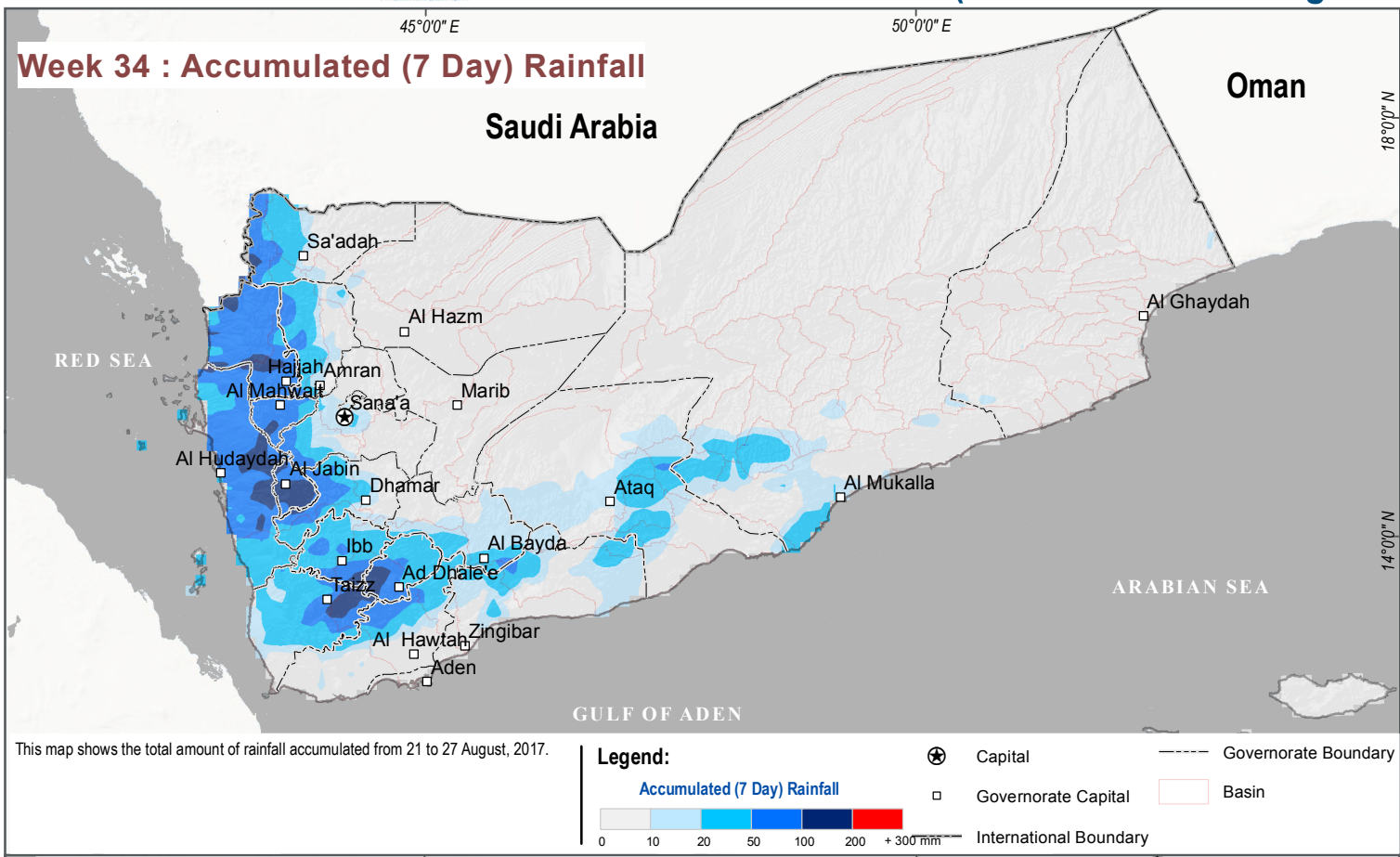


# YEMEN - Rainy Season Monitoring

## Accumulated Rainfall (Week 34: 21 - 27 August 2017) and Forecast Rainfall (Week 35: 27 August to 1 September 2017)



This weekly map provides an overview of accumulated rainfall in the previous week and rainfall deviation from normal and expected rainfall in the next 6 days and how these rainfall values compare to normal rainfall for this month.

Data sources: GPM (IMERG), NOAA, WorldClim, IRI, Columbia University, JRC, HDX-JRC, USGS.

Coordinate System: WGS 1984 UTM Zone 38N

File: REACH\_YEM\_Map\_RainySeasonMonitoring\_28AUG2017\_v1

Contact: reach.mapping@impact-initiatives.org

Note: Data, designations and boundaries contained on this map are not warranted to be error-free and do not imply acceptance by the REACH partners, associates, donors mentioned on this map.

Funded by:

