

# IRAQ - Ninewa - Essian Camp

## General Infrastructure - Updated 30 June 2022

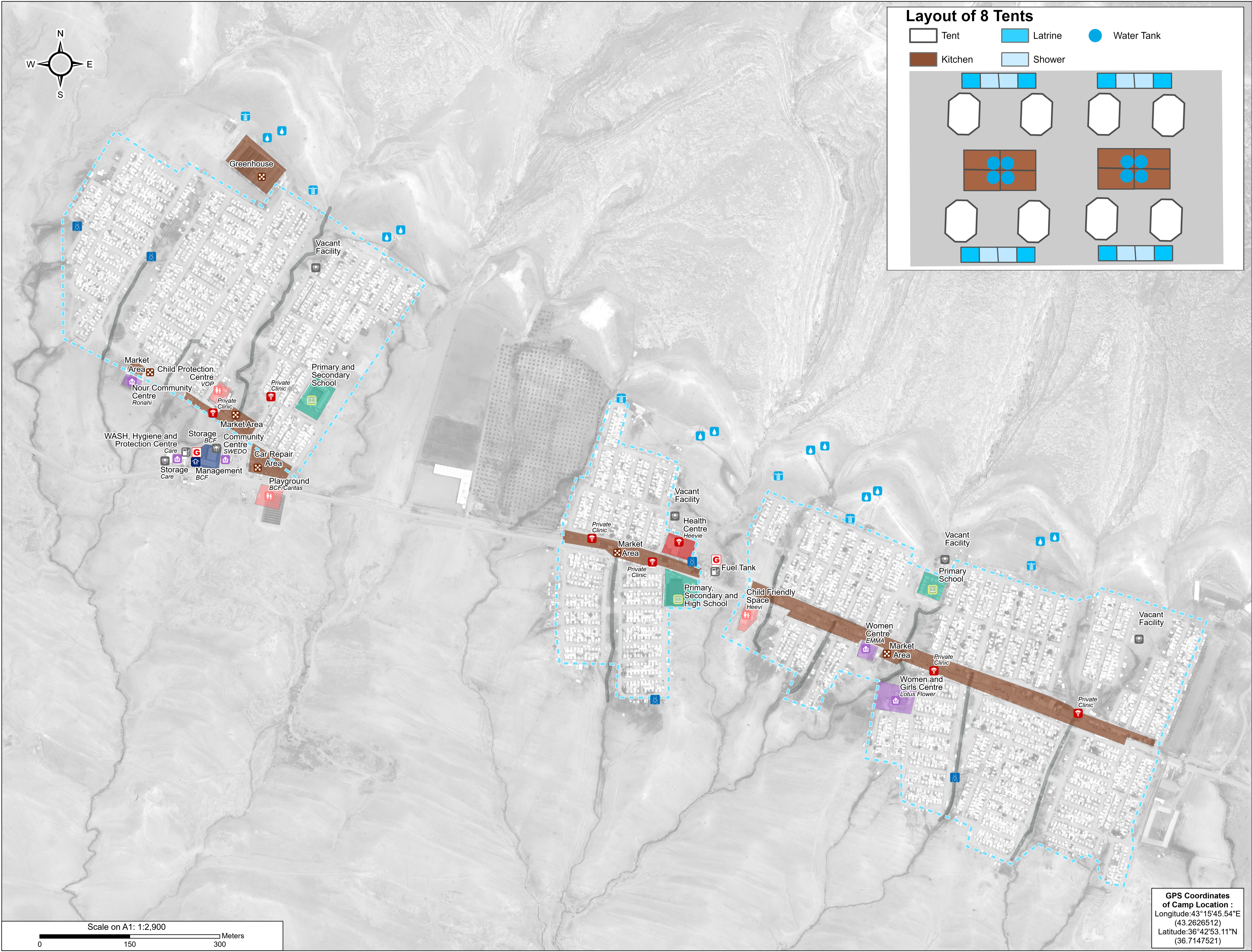
For Humanitarian Purposes Only  
Production date : 31 August 2022

### Camp Infrastructure

- Camp Delineation
- Health
- Office
- Education
- Community Area
- Child Friendly Space
- Service
- Health
- Camp Management
- Education
- Community Area
- Child Friendly Space
- Storage
- Internet Tower
- Fuel Tank
- Generator
- Grey Water
- Borehole (6)
- Water Tank (12)

Thematic Data: 30/06/2022, REACH  
Administrative boundaries: GADM, OCHA  
Satellite Imagery: WorldView-3 from 23/05/2022  
Copyright: © 2022, Digital Globe  
Source: US Department of State, Humanitarian Information Unit, NextView License  
Coordinate System: WGS 1984 UTM Zone 38N  
Contact: reach.mapping@impact-initiatives.org  
File: REACH\_IRQ\_Map\_IDP\_Essian\_30Jun2022

Note: Data, designations and boundaries contained on this map are not warranted to be error-free and do not imply acceptance by the REACH partners, associates or donors mentioned on this map.



### Layout of 8 Tents

- Tent
- Latrine
- Water Tank
- Kitchen
- Shower

