



# Camp Profile: Alwand 1

Diyala governorate, Iraq  
August 2018

Management agency: YAO Organization

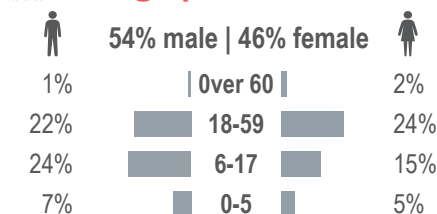
## Summary

This profile provides an overview of conditions in Alwand 1 camp. Primary data was collected through 66 randomly sampled household surveys between 2 July and 7 August 2018. Findings are statistically representative at the camp level with a 90% confidence level and 10% margin of error, with target sample sizes based on population figures provided by camp managers.<sup>1</sup> Additional information from camp managers has been used to support findings.

## Camp Overview

Number of individuals: 3,126<sup>2</sup>  
Number of households: 719<sup>2</sup>  
Date opened: 8/10/2014  
Main shelter type: Caravan  
Planned capacity: 828  
Camp area: 228,802m<sup>2</sup>

## Demographics

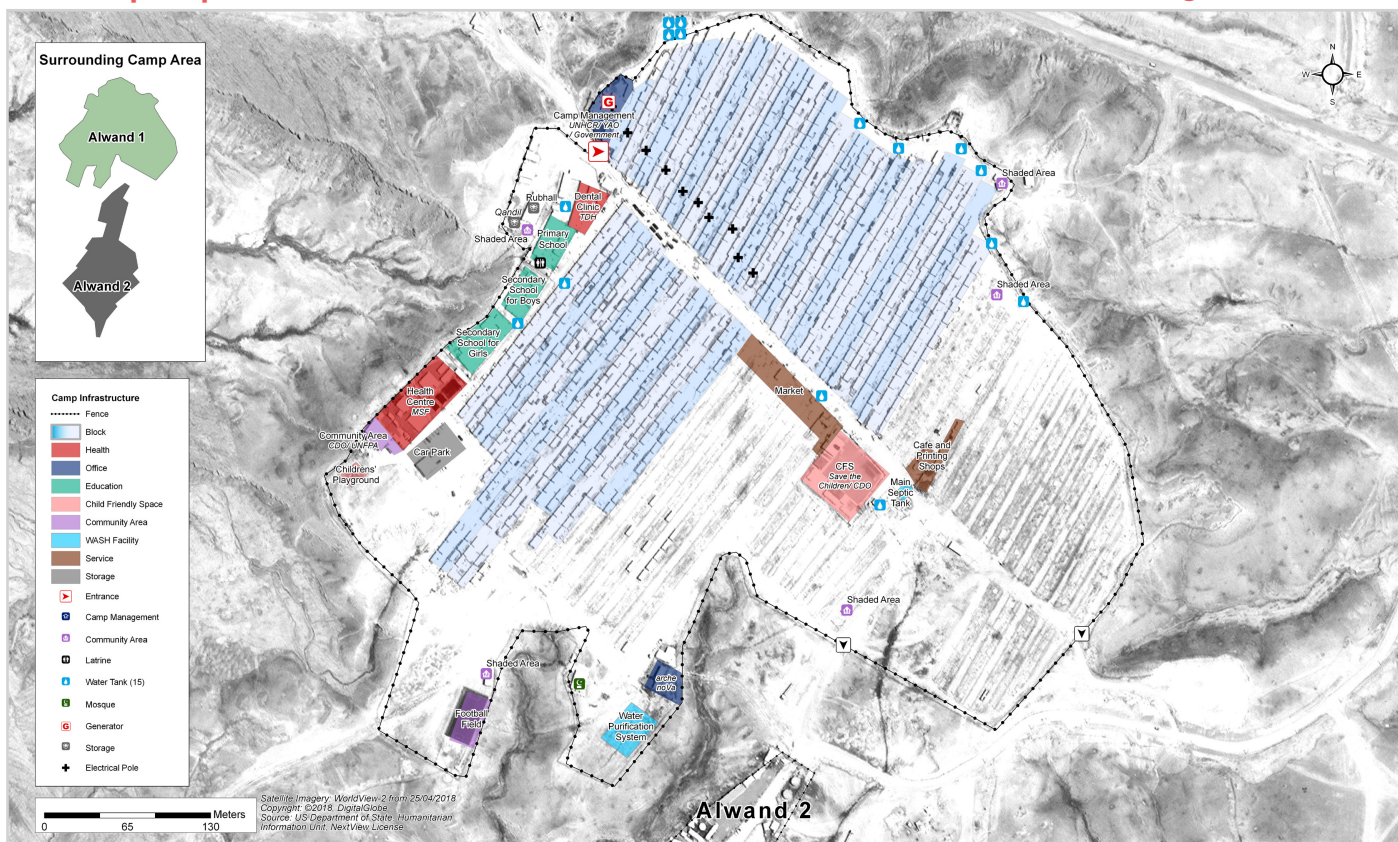


## Location Map



## IDP Camp Map - Alwand 1

Lat. 35° 25' 3.431" N Long. 45° 36' 21.359" E



## Sectoral Minimum Standards

		Target	Previous Round	Current Round	
Education	% of children aged 6-11 attending formal school	100%	85%	98%	●
	% of children aged 12-17 attending formal school	100%	68%	83%	●
Food	% of households accessing Public Distribution Systems (PDS) in the month prior to data collection <sup>3</sup>	100%	24%	58%	●
Health	Health services are available on-site or within walking distance (less than 5km)	Yes	Yes	Yes	●
CCCM	Average open area per household	min. 30m <sup>2</sup>	256m <sup>2</sup>	263m <sup>2</sup>	●
Protection	% of households reported having at least one member with lost, damaged or expired documentation	0%	4%	0%	●
Shelter	Average covered area per person	min 3.5m <sup>2</sup>	5.6m <sup>2</sup>	6.4m <sup>2</sup>	●
	Average number of individuals per shelter	max 5	5	4	●
WASH	# of persons per latrine	max. 20	3	4	●
	# of persons per shower	max. 20	3	4	●
	Frequency of solid waste disposal at least weekly	min. weekly	Yes	Yes	●

Targets based on minimum standards agreed with the CCCM Cluster, Iraq. Findings based on household-level data, enumerator field observations, and camp management documentation.

● Minimum standard reached, ● 50-99% of minimum standard reached, ● Less than 50% of minimum standard reached or not at all.

<sup>1</sup>Findings of a subset of the population may have a wider margin of error, with anything below a minimum confidence level of 90% and a margin of error of 10% considered indicative.

<sup>2</sup>Camp population and household figures from CCCM camp managers at time of data collection. The camp population as of September 2018 is 712 households and 3,129 individuals according to national CCCM cluster figures.

<sup>3</sup>PDS rations do not necessarily include the full basket provided by the WFP Family Food Parcel or equivalent.



CCCM CLUSTER  
SUPPORTING DISPLACED COMMUNITIES

REACH  
Informing more effective humanitarian action



# Camp Profile: Alwand 1



## Protection and Intentions

### Vulnerable Groups

Proportion of population identified as vulnerable:

5% Pregnant/lactating women 1% Individuals with disabilities  
4% Chronically ill individuals 27% Female-headed households

### Movement Intentions

74% of households listed safety and security in their AoO as a priority need in order to return.

### Freedom of Movement

100% reported being able to leave the camp temporarily (e.g. to go to the market for livelihood opportunities).



## Information and Priority Needs

Top three information needs:<sup>\*</sup>

Accessing humanitarian assistance 49%  
Information about returns 41%  
Finding job opportunities 41%

Top three reported priority needs:<sup>\*</sup>

Food 80%  
Healthcare 58%  
Employment 36%



## Shelter and NFIs

Of the 54% that reported concerns with their shelter, the top three needs were:<sup>\*4</sup>

Protection from hazards 46%  
Improve basic utilities 23%  
Improve privacy and dignity 20%

Of the 100% that reported NFI needs, the top three were:<sup>\*</sup>

Air water cooler 83%  
Fan 72%  
Cool box 29%



## Education

Reported attendance rates of formal education by age and sex:

91% male | 89% female  
97% 6 - 11 100%  
84% 12 - 17 80%

Of the 22% of households that reported their children **did not receive education** in the 30 days prior to data collection, the top three barriers included:<sup>\*4</sup>

- Child disabled
- Child disinterested
- Education considered not important

<sup>\*</sup>Respondents could select multiple needs or reasons. Therefore, results may exceed 100%.

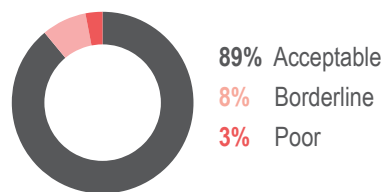
<sup>4</sup>Findings are based on a small subset of the sample population and are therefore considered indicative rather than statistically generalizable to all in-camp households.

<sup>5</sup>Food consumption score calculated according to United Nations World Food Programme most recent technical guidelines, as of February 2008.



## Food Security and Livelihoods

### Household Food Consumption Score (FCS)<sup>5</sup>



### Food Consumption Coping Strategies

46% of households reported using some form of consumption-based coping strategy in the 30 days prior to data collection. The most common of which were:<sup>\*</sup>

Spend savings 77%  
Sell assets 77%  
Buy food on credit 70%

### Household Income and Expenditure

Median monthly household income: 300,000 IQD (252 USD)<sup>6,7</sup>

Median monthly expenditure per household: 236,000 IQD (198 USD)<sup>6</sup>

40% of adults reported working in the 30 days prior to data collection.

Top three household income sources:<sup>\*7</sup>

Employment 74%  
Retirement pension 20%  
Support from community 8%

Top three monthly household expenditures:<sup>\*</sup>

Food 62%  
NFIs 10%  
Transport 6%



## WASH

Top two primary sources of drinking water over the 7 days prior to data collection:<sup>\*</sup>

Purchased from shop 45%  
Network (private access) 31%

0% of households had access to public or communal latrines, and 100% had access to private latrines.<sup>\*</sup>

88% of households reported collection services as their main method of waste disposal.



## Health

Of the 26% of households who required healthcare services in the three months prior to data collection, **94% reported facing barriers to access**, with the top three barriers including:<sup>\*4</sup>

- High cost of healthcare
- No medicine in hospital
- Unqualified hospital staff

<sup>6</sup>Exchange rate of 1 USD: 1192.3 IQD, sourced from [xe.com](http://xe.com) at 7/2/2018.

<sup>7</sup>Income includes multiple sources such as employment, savings, selling assistance, and receiving assistance.



CCCM CLUSTER  
SUPPORTING DISPLACED COMMUNITIES

REACH  
Informing more effective humanitarian action



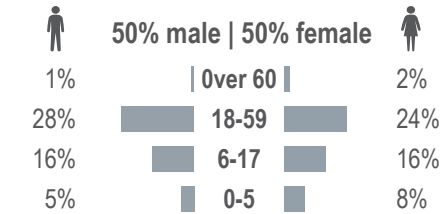
## Summary

This profile provides an overview of conditions in Alwand 2 camp. Primary data was collected through 57 randomly sampled household surveys between 2 July and 7 August 2018. Findings are statistically representative at the camp level with a 90% confidence level and 10% margin of error, with target sample sizes based on population figures provided by camp managers.<sup>1</sup> Additional information from camp managers has been used to support findings.

## Camp Overview

<b>Number of individuals:</b>	<b>1,050<sup>2</sup></b>
<b>Number of households:</b>	<b>236<sup>2</sup></b>
Date opened:	10/17/2017
Main shelter type:	Tent
Planned capacity:	376
Camp area:	148,346m <sup>2</sup>

## Demographics

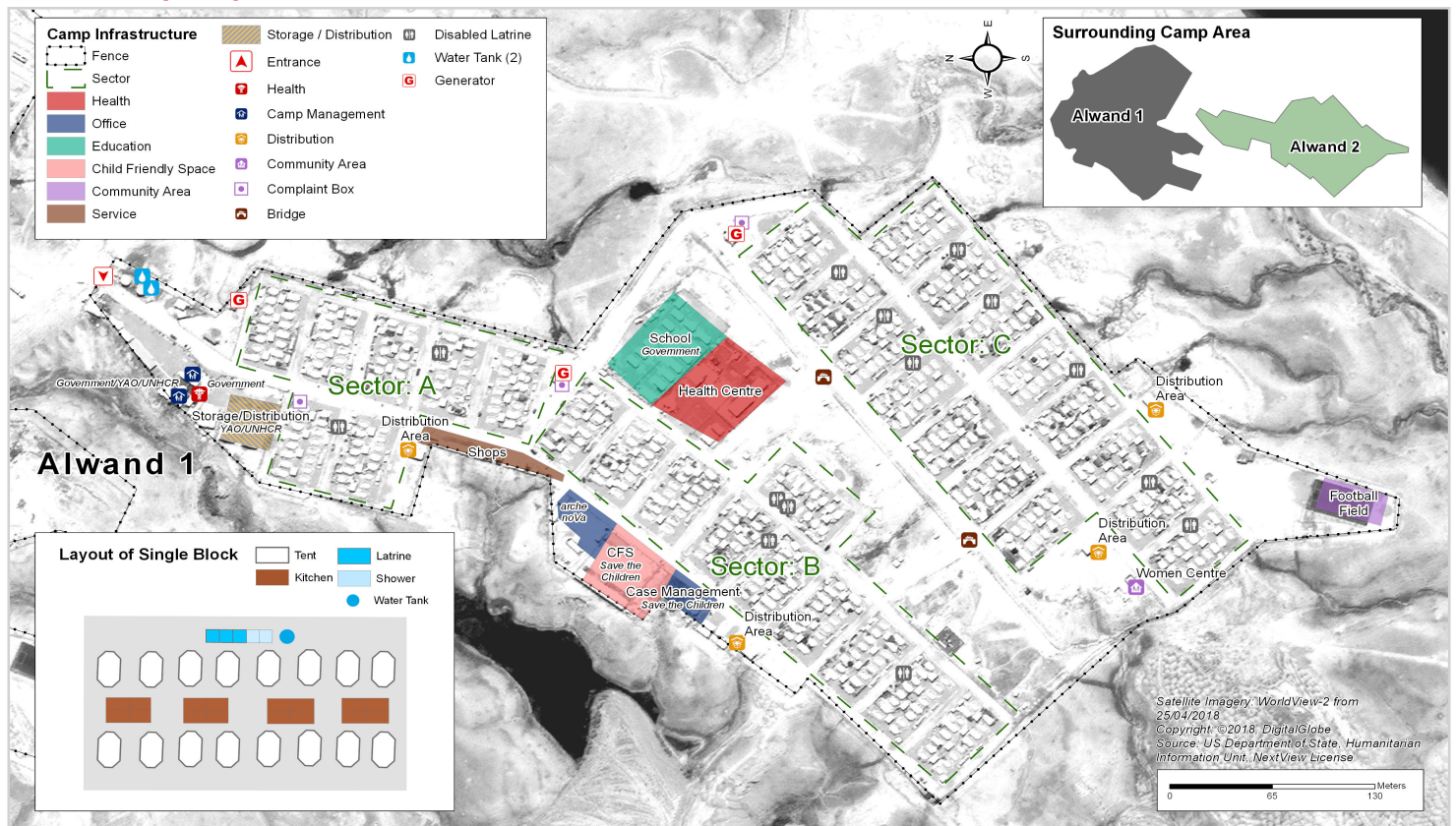


## Location Map



Lat.34° 19' 26.35" N Long. 45° 27' 11.29" E

## IDP Camp Map - Alwand 2

☒ **Sectoral Minimum Standards**

Sectoral Minimum Standards		Target	Previous Round	Current Round	
Education	% of children aged 6-11 attending formal school	100%	80%	98%	●
	% of children aged 12-17 attending formal school	100%	69%	85%	●
Food	% of households accessing Public Distribution Systems (PDS) in the month prior to data collection <sup>3</sup>	100%	32%	58%	●
Health	Health services are available on-site or within walking distance (less than 5km)	Yes	Yes	Yes	●
CCCM	Average open area per household	min. 30m <sup>2</sup>	477m <sup>2</sup>	547m <sup>2</sup>	●
Protection	% of households reported having at least one member with lost, damaged or expired documentation	0%	1%	0%	●
Shelter	Average covered area per person	min 3.5m <sup>2</sup>	4.6m <sup>2</sup>	5.2m <sup>2</sup>	●
	Average number of individuals per shelter	max 5	4	3	●
WASH	# of persons per latrine	max. 20	5	5	●
	# of persons per shower	max. 20	5	15	●
	Frequency of solid waste disposal at least weekly	min. weekly	Yes	Yes	●

Targets based on minimum standards agreed with the CCCM Cluster, Iraq. Findings based on household-level data, enumerator field observations, and camp management documentation.

● Minimum standard reached, ● 50-99% of minimum standard reached, ● Less than 50% of minimum standard reached or not at all.

<sup>1</sup>Findings of a subset of the population may have a wider margin of error, with anything below a minimum confidence level of 90% and a margin of error of 10% considered indicative.

<sup>2</sup>Camp population and household figures from CCCM camp managers at time of data collection. The camp population as of September 2018 is 237 households and 1,035 individuals according to national CCCM cluster figures.

<sup>3</sup> PDS rations do not necessarily include the full basket provided by the WFP Family Food Parcel or equivalent.



**CCCM CLUSTER**  
SUPPORTING DISPLACED COMMUNITIES

**REACH** Informing  
more effective  
humanitarian action



# Camp Profile: Alwand 2



## Protection and Intentions

### Vulnerable Groups

Proportion of population identified as vulnerable:

3% Pregnant/lactating women 3% Individuals with disabilities  
2% Chronically ill individuals 28% Female-headed households

### Movement Intentions

67% of households listed information on situation in AoO as a priority need in order to return.

### Freedom of Movement

98% reported being able to leave the camp temporarily (e.g. to go to the market for livelihood opportunities).



## Information and Priority Needs

Top three information needs:<sup>\*</sup>

Accessing humanitarian assistance 50%  
Finding job opportunities 41%  
Information about returns 30%

Top three reported priority needs:<sup>\*</sup>

Food 76%  
Healthcare 67%  
Employment 36%



## Shelter and NFIs

Of the 54% that reported concerns with their shelter, the top three needs were:<sup>\*4</sup>

Protection from hazards 42%  
Weather protection 42%  
Improve privacy and dignity 29%

Of the 100% that reported NFI needs, the top three were:<sup>\*4</sup>

Air water cooler 91%  
Fan 75%  
Clothing 30%



## Education

Reported attendance rates of formal education by age and sex:

100% 98% male | 87% female 95%  
94% 12 - 17 78%

Of the 21% of households that reported their children **did not receive education** in the 30 days prior to data collection, the top three barriers included:<sup>\*4</sup>

- Child disabled
- Cannot afford to pay
- N/A

<sup>\*</sup>Respondents could select multiple needs or reasons. Therefore, results may exceed 100%.

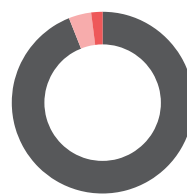
<sup>\*4</sup>Findings are based on a small subset of the sample population and are therefore considered indicative rather than statistically generalizable to all in-camp households.

<sup>5</sup>Food consumption score calculated according to United Nations World Food Programme most recent technical guidelines, as of February 2008.



## Food Security and Livelihoods

### Household Food Consumption Score (FCS)<sup>5</sup>



94% Acceptable  
4% Borderline  
2% Poor

### Food Consumption Coping Strategies

44% of households reported using some form of consumption-based coping strategy in the 30 days prior to data collection. The most common of which were:<sup>\*</sup>

Sell assets 80%  
Buy food on credit 80%  
Spend savings 72%

### Household Income and Expenditure

Median monthly household income: 300,000 IQD (252 USD)<sup>6,7</sup>

Median monthly expenditure per household: 225,000 IQD (189 USD)<sup>6</sup>

51% of adults reported working in the 30 days prior to data collection.

Top three household income sources:<sup>\*7</sup>

Employment 77%  
Retirement pension 14%  
Social services 9%

Top three monthly household expenditures:<sup>\*</sup>

Food 49%  
Healthcare 14%  
NFIs 13%



## WASH

Top two primary sources of drinking water over the 7 days prior to data collection:<sup>\*</sup>

Purchased from shop 44%  
Network (communal access) 35%

54% of households had access to public or communal latrines, and 46% had access to private latrines.<sup>\*</sup>

77% of households reported collection services as their main method of waste disposal.



## Health

Of the 21% of households who required healthcare services in the three months prior to data collection, 92% reported facing barriers to access, with the top three barriers including:<sup>\*4</sup>

- High cost of healthcare
- No medicine in hospital
- Unqualified hospital staff

<sup>6</sup>Exchange rate of 1 USD: 1192.3 IQD, sourced from [xe.com](http://xe.com) at 7/2/2018.

<sup>7</sup>Income includes multiple sources such as employment, savings, selling assistance, and receiving assistance.







# Camp Profile: Qoratu

Diyala governorate, Iraq  
August 2018

Management agency: YAO Organization

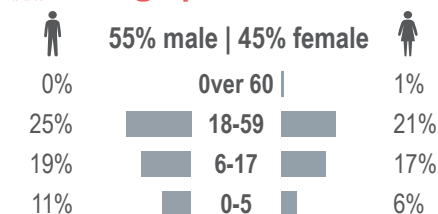
## Summary

This profile provides an overview of conditions in Qoratu camp. Primary data was collected through 57 randomly sampled household surveys between 2 July and 7 August 2018. Findings are statistically representative at the camp level with a 90% confidence level and 10% margin of error, with target sample sizes based on population figures provided by camp managers.<sup>1</sup> Additional information from camp managers has been used to support findings.

## Camp Overview

Number of individuals: 1,159<sup>2</sup>  
Number of households: 250<sup>2</sup>  
Date opened: 9/19/2015  
Main shelter type: Tent  
Planned capacity: 1,040  
Camp area: 238,013m<sup>2</sup>

## Demographics

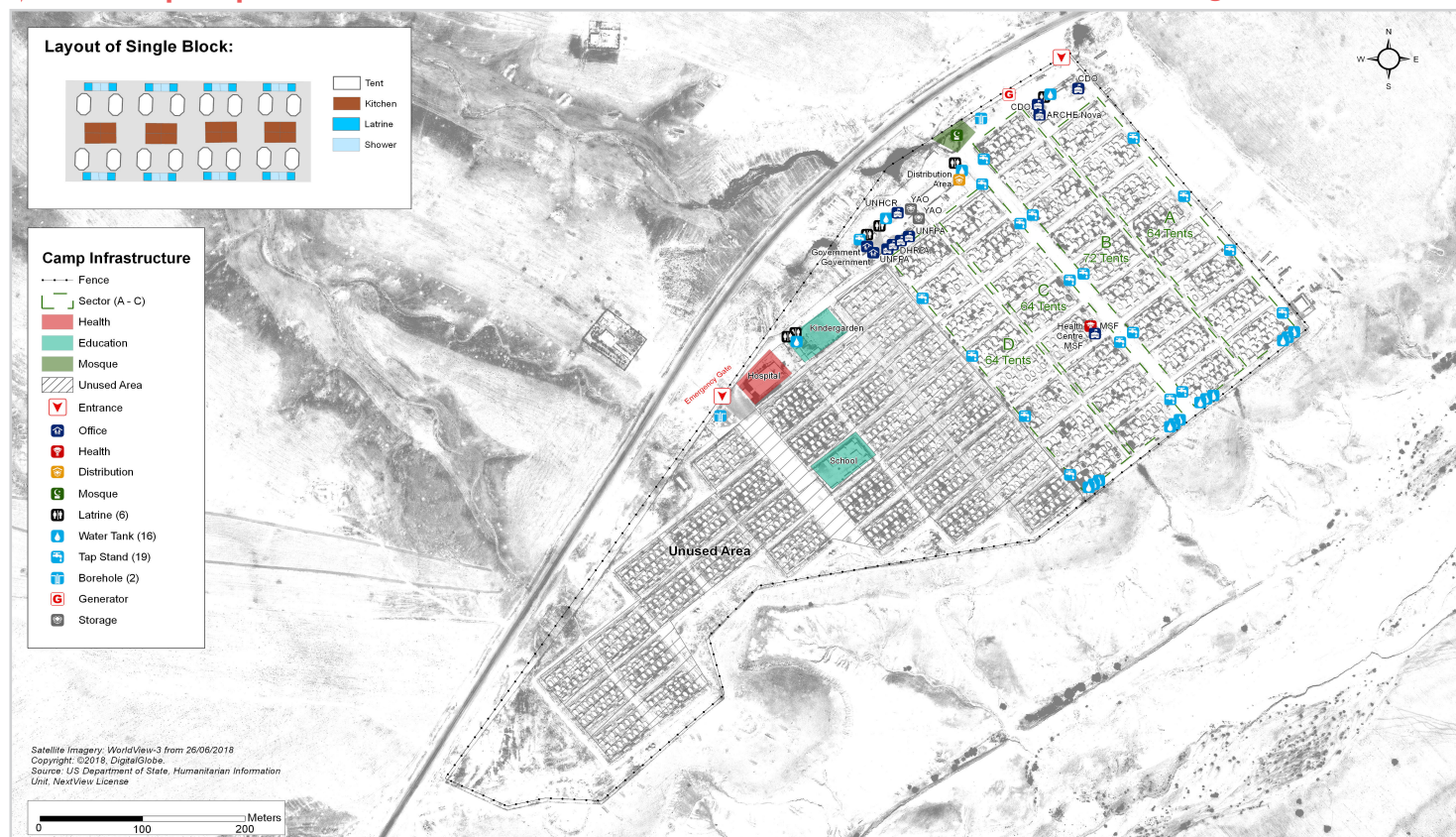


## Location Map



## IDP Camp Map - Qoratu

Lat. 34° 32' 39.908" N Long. 45° 23' 26.923" E



## Sectoral Minimum Standards

		Target	Previous Round	Current Round	
Education	% of children aged 6-11 attending formal school	100%	84%	94%	●
	% of children aged 12-17 attending formal school	100%	72%	57%	●
Food	% of households accessing Public Distribution Systems (PDS) in the month prior to data collection <sup>3</sup>	100%	43%	38%	●
Health	Health services are available on-site or within walking distance (less than 5km)	Yes	Yes	No	●
CCCM	Average open area per household	min. 30m <sup>2</sup>	118m <sup>2</sup>	853m <sup>2</sup>	●
Protection	% of households reported having at least one member with lost, damaged or expired documentation	0%	3%	0%	●
Shelter	Average covered area per person	min 3.5m <sup>2</sup>	3.7m <sup>2</sup>	4m <sup>2</sup>	●
	Average number of individuals per shelter	max 5	4	3	●
WASH	# of persons per latrine	max. 20	4	3	●
	# of persons per shower	max. 20	4	3	●
	Frequency of solid waste disposal at least weekly	min. weekly	Yes	Yes	●

Targets based on minimum standards agreed with the CCCM Cluster, Iraq. Findings based on household-level data, enumerator field observations, and camp management documentation.

● Minimum standard reached, ● 50-99% of minimum standard reached, ● Less than 50% of minimum standard reached or not at all.

<sup>1</sup>Findings of a subset of the population may have a wider margin of error, with anything below a minimum confidence level of 90% and a margin of error of 10% considered indicative.

<sup>2</sup>Camp population and household figures from CCCM camp managers at time of data collection. The camp population as of September 2018 is 256 households and 1,195 individuals according to national CCCM cluster figures.

<sup>3</sup>PDS rations do not necessarily include the full basket provided by the WFP Family Food Parcel or equivalent.



CCCM CLUSTER  
SUPPORTING DISPLACED COMMUNITIES

REACH  
Informing more effective humanitarian action



# Camp Profile: Qoratu



## Protection and Intentions

### Vulnerable Groups

Proportion of population identified as vulnerable:

**18%** Pregnant/lactating women **1%** Individuals with disabilities  
**1%** Chronically ill individuals **9%** Female-headed households

### Movement Intentions

**77%** of households listed safety and security in their AoO as a priority need in order to return.

### Freedom of Movement

**100%** reported being able to leave the camp temporarily (e.g. to go to the market for livelihood opportunities).



## Information and Priority Needs

Top three information needs:<sup>\*</sup>

Finding job opportunities **47%**  
Accessing humanitarian assistance **45%**  
Information about returns **29%**

Top three reported priority needs:<sup>\*</sup>

Food **91%**  
Healthcare **56%**  
Employment **32%**



## Shelter and NFIs

Of the 62% that reported concerns with their shelter, the top three needs were:<sup>\*4</sup>

Protection from hazards **47%**  
Weather protection **31%**  
Improve privacy and dignity **28%**

Of the 100% that reported NFI needs, the top three were:<sup>\*4</sup>

Air water cooler **85%**  
Fan **69%**  
Clothing **29%**



## Education

Reported attendance rates of formal education by age and sex:

**83% male | 74% female**

**93%** **6 - 11** **96%**  
**70%** **12 - 17** **41%**

Of the **27%** of households that reported their children **did not receive education** in the 30 days prior to data collection, the top three barriers included:<sup>\*4</sup>

- Recently displaced
- Cannot afford to pay
- Child stays at home to assist with household chores

<sup>\*</sup>Respondents could select multiple needs or reasons. Therefore, results may exceed 100%.

<sup>4</sup>Findings are based on a small subset of the sample population and are therefore considered indicative rather than statistically generalizable to all in-camp households.

<sup>5</sup>Food consumption score calculated according to United Nations World Food Programme most recent technical guidelines, as of February 2008.



## Food Security and Livelihoods

### Household Food Consumption Score (FCS)<sup>5</sup>



**98%** Acceptable  
**2%** Borderline  
**0%** Poor

### Food Consumption Coping Strategies

**50%** of households reported using some form of consumption-based coping strategy in the 30 days prior to data collection. The most common of which were:<sup>\*</sup>

Sell assets **69%**  
Buy food on credit **65%**  
Spend savings **62%**

### Household Income and Expenditure

Median monthly household income: **300,000 IQD (252 USD)<sup>6,7</sup>**

Median monthly expenditure per household: **212,500 IQD (178 USD)<sup>6</sup>**

**49%** of adults reported working in the 30 days prior to data collection.

Top three household income sources:<sup>\*7</sup>

Employment **81%**  
Retirement pension **13%**  
Support from community **4%**

Top three monthly household expenditures:<sup>\*</sup>

Food **55%**  
NFIs **11%**  
Servicing debt **9%**



## WASH

Top two primary sources of drinking water over the 7 days prior to data collection:<sup>\*</sup>

Network (communal access) **60%**  
Network (private access) **21%**

**17%** of households had access to public or communal latrines, and 90% had access to private latrines.<sup>\*</sup>

**90%** of households reported collection services as their main method of waste disposal.



## Health

Of the 23% of households who required healthcare services in the three months prior to data collection, **85% reported facing barriers to access**, with the top three barriers including:<sup>\*4</sup>

- High cost of healthcare
- No medicine in hospital
- No treatment offered in pharmacy

<sup>6</sup>Exchange rate of 1 USD: 1192.3 IQD, sourced from [xe.com](http://xe.com) at 7/2/2018.

<sup>7</sup>Income includes multiple sources such as employment, savings, selling assistance, and receiving assistance.



**CCCM CLUSTER**  
SUPPORTING DISPLACED COMMUNITIES

**REACH** Informing more effective humanitarian action