



IDP Camp Profile - Alwand 2

Diyala, Iraq
January 2017

Management agency: Government and YAO
Manager/Focal point: Ibrahim Karam Ali
Phone number: 7703537139
Email: Saiwan@ymail.com
Registration actor: Government and YAO

Summary

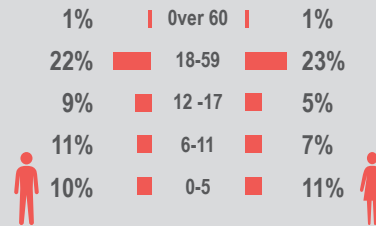
This profile provides an overview of conditions in Alwand 2 camp. Primary data was collected through household surveys on 10-01-2017. Households were randomly sampled to a 95% confidence and 10% margin of error, based on population figures provided by CCCM. In some cases, additional information from camp managers has been used to support findings. Round VI of data collection was in August 2016

Camp Overview

of individuals: 1,849
of households: 403
Date opened: 16-11-2015
Occupied number: 404
Ongoing extension: no
Planned capacity: 512
Camp area: 148,345m²

Demographics

53% male / 47% female

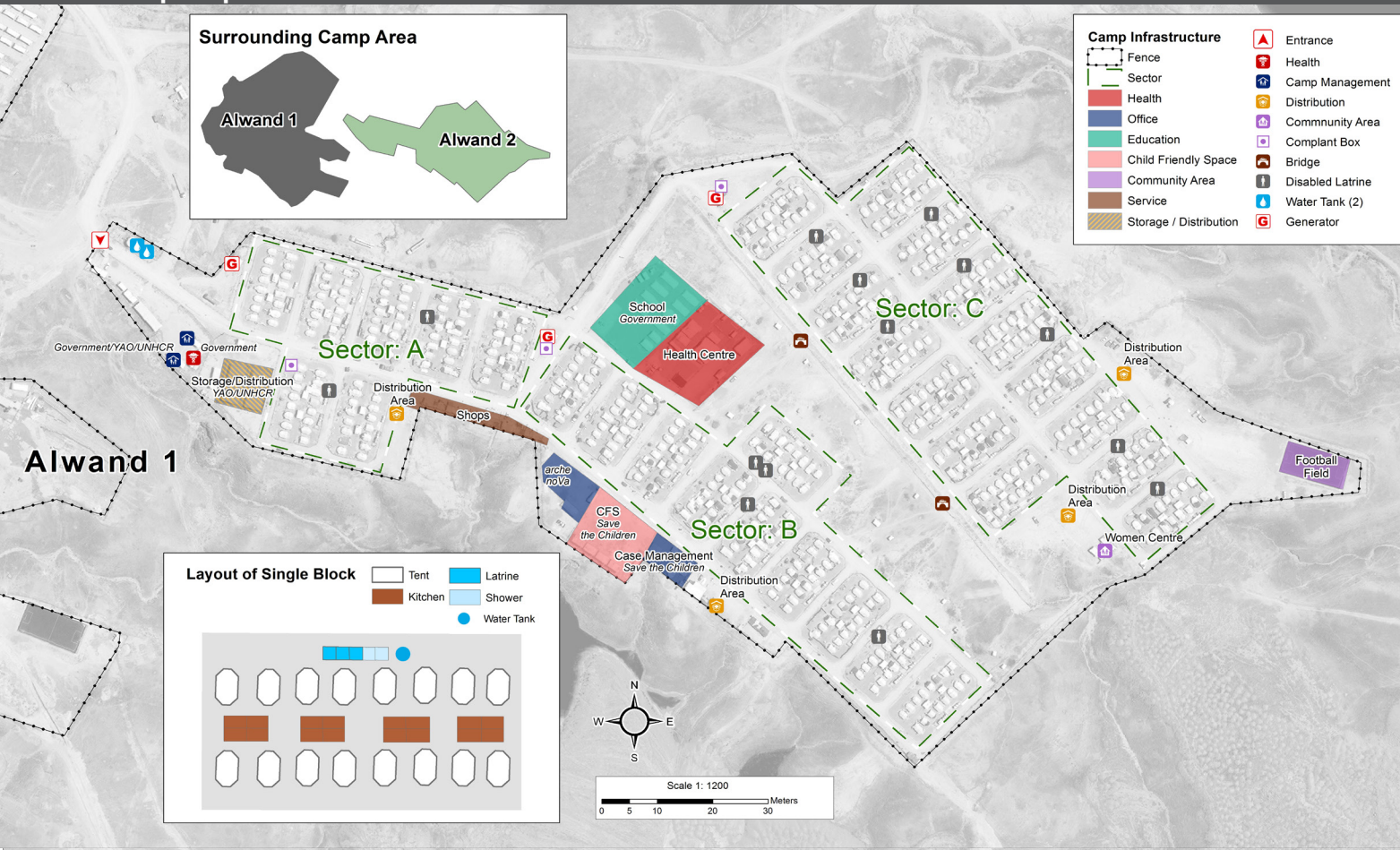


Location Map



IDP Camp Map - Alwand 2

Lat. 34° 19' 26.35" N Long. 45° 27' 11.29" E



Sectoral Minimum Standards

		Target	Previous Round	Current Round	Achievement
Education	% of children aged 6-11 attending formal school	100%	67%	77%	●
	% of children aged 12-17 attending formal school	100%	49%	63%	●
Food	% of households accessed Family Food Parcel or equivalent in the past month	100%	100%	99%	●
Health	Health services are available on-site or within walking distance	Yes	Yes	Yes	●
CCCM	Average open area per household	min. 30m ²	396m ²	309m ²	●
Protection	% of IDPs registered on an individual basis (MODM/DDM)	100%	100%	95%	●
Shelter	Average covered area per person	min. 3.5m ²	3.8m ²	4.6m ²	●
	Average number of individuals per shelter	max.5	8	4	●
WASH	# of persons per latrine	max. 20	11	4	●
	# of persons per shower	max. 20	14	4	●
	Frequency of solid waste disposal at least weekly	Min. weekly	no	Yes	●

Targets based on minimum standards agreed with the CCCM Cluster, Iraq. Findings based on household-level data, enumerator field observations, and camp management documentation
● Minimum standard reached, ● More than 50% minimum standard reached, ● Less than 50% of minimum standard reached or not at all





IDP Camp Profile - Alwand 2

Diyala, Iraq
January 2017

Management agency: Government and YAO
Manager/Focal point: Ibrahim Karam Ali
Phone number: 7703537139
Email: Saiwan@ymail.com
Registration actor: Government and YAO

Shelter

Top observed shelter type

Tent 87%

Top reported needed shelter items

Tarpaulin 100%

Sun shading net 62%

Timber 42%

Top reported needed basic items

Blanket 97%

Mattresses 86%

Cooker 72%

Top reported needed winter item

Kerosene heater 68%

Top reported needed summer item

Rechargeable fan 74%

Food Security

Reported access to food assistance

99% accessed food assistance in past month

38% received Public Distribution System (PDS) in past month

Top three food consumption coping strategies

Cheaper 49%

Borrowed 29%

Smaller meals 17%

WASH

Latrines and showers

74% reported public or communal latrines

64% public/communal latrines lockable from the inside

43% public/communal latrines with functioning lighting

Top three reported methods of waste removal

Collected 100%

n/a n/a

n/a n/a

Reported drinking water sources

10% connection inside the home to collective water storage

0% connection inside the home to private water storage

0% communal water tap outside the shelter

Access to water

23% reported 24 consecutive hours without access to water in the past month

Community Organisation

IDP committees

100% reported awareness of IDP committee(s)

Complaints mechanism

7% made a complaint about conditions or assistance

Protection

Family Separation

0% reported hosting unaccompanied or separated minors

1% reported that other family members intended to join them

Vulnerable groups

Pregnant / lactating women 10%

Chronically ill individual(s) 6%

Disabled individual(s) 2%

Female headed households 16%

Intentions

3% planned to move to a different location in next 3 months

Restrictions

100% reported being able to leave the camp temporarily (e.g. to go to the market, for livelihood opportunities)

Livelihoods

7% reported as being economically inactive

Top three income sources*:

Unskilled agri labour 20%

Low-skilled services 19%

Pension 10%

*Households were asked to select all income sources within household.

Top three reported livelihood coping strategies

Spent savings 28%

Debt 27%

Sold assistance 23%

