



# IDP Camp Profile - Hasansham U3

Ninewa, Iraq  
February 2017

Management agency: BCF  
Manager/Focal point: Rzggar Obeed Mashkur  
Phone number: 7504494873  
Email: idp.senior.cm@bcf.krd  
Registration actor: BCF

## Summary

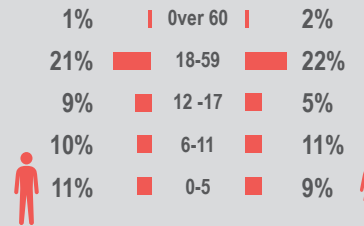
This profile provides an overview of conditions in Hasansham U3 camp. Primary data was collected through household surveys on 5-01-2017. This was the first round of data collection for this camp. Households were randomly sampled to a 95% confidence and 10% margin of error, based on population figures provided by CCCM. In some cases, additional information from camp managers has been used to support findings.

## Camp Overview

# of individuals: 8,600  
# of households: 1,700  
Date opened: 4-11-2016  
Occupied number: 1,931  
Ongoing extension: no  
Planned capacity: 1,931  
Camp area: 453,475m<sup>2</sup>

## Demographics

52% male / 48% female

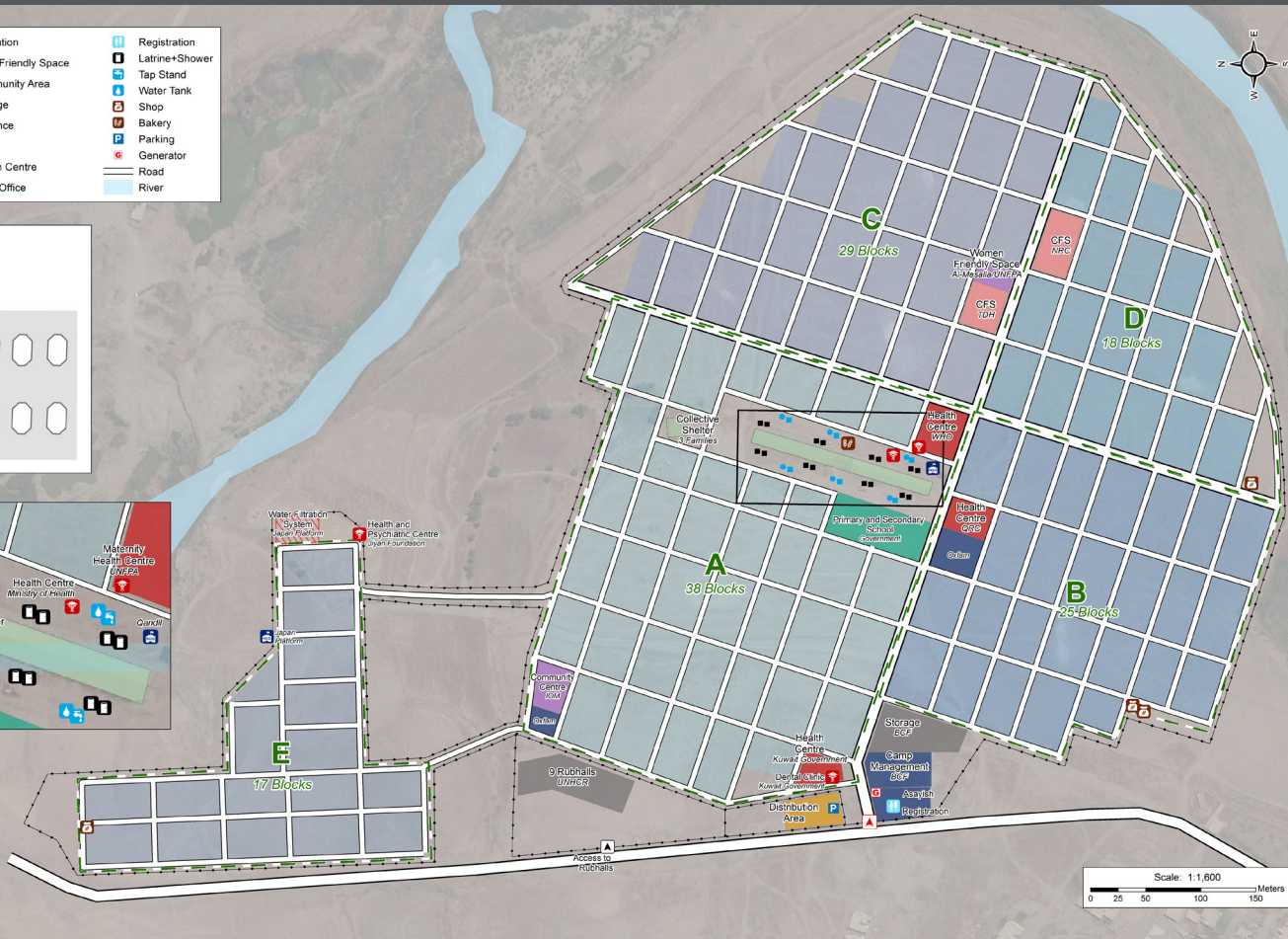
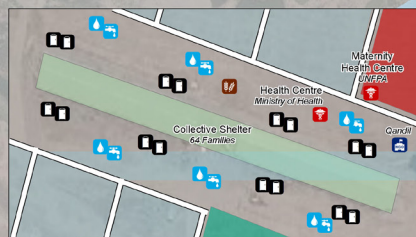
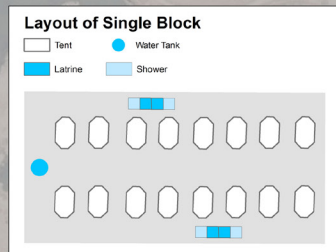
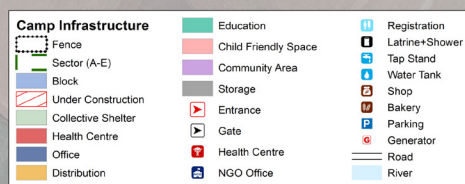


## Location Map



## IDP Camp Map - Hasansham U3

Lat. 36° 19' 27.289" N Long. 43° 32' 8.65" E



## Sectoral Minimum Standards

		Target	Previous Round	Current Round	Achievement
Education	% of children aged 6-11 attending formal school	100%	n/a	0%	●
	% of children aged 12-17 attending formal school	100%	n/a	0%	●
Food	% of households accessed Family Food Parcel or equivalent in the past month	100%	n/a	95%	●
Health	Health services are available on-site or within walking distance	Yes	n/a	Yes	●
CCCM	Average open area per household	min. 30m <sup>2</sup>	n/a	435m <sup>2</sup>	●
Protection	% of IDPs registered on an individual basis (MODM/DDM)	100%	n/a	36%	●
Shelter	Average covered area per person	min. 3.5m <sup>2</sup>	n/a	3.7m <sup>2</sup>	●
	Average number of individuals per shelter	max.5	n/a	2	●
WASH	# of persons per latrine	max. 20	n/a	22	●
	# of persons per shower	max. 20	6	22	●
	Frequency of solid waste disposal at least weekly	Min. weekly	n/a	Yes	●

Targets based on minimum standards agreed with the CCCM Cluster, Iraq. Findings based on household-level data, enumerator field observations, and camp management documentation  
● Minimum standard reached, ● More than 50% minimum standard reached, ● Less than 50% of minimum standard reached or not at all





# IDP Camp Profile - Hasansham U3

Ninewa, Iraq  
February 2017

Management agency: BCF  
Manager/Focal point: Rzgar Obeed Mashkur  
Phone number: 7504494873  
Email: idp.senior.cm@bcf.krd  
Registration actor: BCF

## Shelter

### Top observed shelter type

Tent 100%

### Top reported needed shelter items

Tarpaulin 78%

Rope 48%

Rope 46%

### Top reported needed basic items

Cooker 87%

Blanket 59%

Fuel for cooking 39%

### Top reported needed winter item

Kerosene 49%

### Top reported needed summer item

Rechargeable fan 68%

## Food Security

### Reported access to food assistance

95% accessed food assistance in past month

8% received Public Distribution System (PDS) in past month

### Top three food consumption coping strategies

Less meals 43%

Cheaper 43%

Smaller meals 34%

## WASH

### Latrines and showers

100% reported public or communal latrines

82% public/communal latrines lockable from the inside

0% public/communal latrines with functioning lighting

### Top three reported methods of waste removal

Communal bin 100%

n/a n/a

n/a n/a

### Reported drinking water sources

0% connection inside the home to collective water storage

0% connection inside the home to private water storage

74% communal water tap outside the shelter

### Access to water

54% reported 24 consecutive hours without access to water in the past month

## Community Organisation

### IDP committees

85% reported awareness of IDP committee(s)

### Complaints mechanism

23% made a complaint about conditions or assistance

## Protection

### Family Separation

0% reported hosting unaccompanied or separated minors

4% reported that other family members intended to join them

### Vulnerable groups

Pregnant / lactating women 14%

Chronically ill individual(s) 9%

Disabled individual(s) 3%

Female headed households 14%

### Intentions

71% planned to move to a different location in next 3 months

### Restrictions

1% reported being able to leave the camp temporarily (e.g. to go to the market, for livelihood opportunities)

## Livelihoods

77% reported as being economically inactive

### Top three income sources\*:

No livelihood 77%

Gifts 15%

Low-skilled services 2%

\*Households were asked to select all income sources within household.

### Top three reported livelihood coping strategies

Sold assistance 26%

Selling assets 26%

Spent savings 25%