

SYRIA MARKET MONITORING EXERCISE

Snapshot: 08-15 October 2018

Cash-Based Responses
Technical Working Group

REACH Informing
more effective
humanitarian action

INTRODUCTION

To inform humanitarian cash programming, REACH and the Cash-Based Responses Technical Working Group (CBR-TWG) conduct monthly market monitoring throughout Syria to assess the availability and prices of 36 basic commodities that are typically sold in markets and consumed by average Syrian households, including food and non-food items, water, fuel, and cellphone data.

Of these, 18 items comprise the Survival Minimum Expenditure Basket (SMEB), see below, which represents the minimum culturally adjusted items required to support a 6-person household for a month.

Data was collected this month by ACTED, CARE Shafak, Concern, GOAL, Ihsan, IRC, Mercy Corps, People in Need, REACH, Solidarités International, STC Shafak Violet and Watan.

Datasets are available on the [REACH Resource Centre](#), [the Humanitarian Data Exchange](#), and are also distributed through partners across the humanitarian community.

SURVIVAL MINIMUM EXPENDITURE BASKET (SMEB) CONTENTS

	Item	Quantity	
Food Items	Bread	37 kg	
	Bulgur	15 kg	
	Chicken	6 kg	
	Eggs	6 kg	
	Fresh vegetables	12 kg	
	Ghee/vegetable oil	7 kg/L	
	Red lentils	15 kg	
	Rice	19 kg	
	Salt	1 kg	
	Sugar	5 kg	
	Tomato paste	6 kg	
	Hygiene items	Bathing soap	12 bars
		Laundry/dish soap	3 kg
Sanitary pads		4 packs of 10	
Toothpaste		200 g	
Fuel		Cooking fuel*	25 L
Water	Water trucking	4500 L	
Telecom	Smartphone data	1 GB	
Other	Float (other costs)**	7.5% total value	

* Kerosene in northern Syria; LP Gas in southern Syria

** Float only applied to observations where prices of all SMEB contents could be collected

KEY DEVELOPMENTS

North: SMEB costs diverge regionally

The SMEB cost has increased in northwest Syria by 5% to 56,068 SYP since September 2018. While this is the highest cost observed in the past 4 months, the cost is 13% lower compared to October 2017 (62,034 SYP). In northeast Syria the SMEB for non-water trucking communities has risen for the third consecutive month increasing by 2% to 58,540 SYP since September 2018, however, the complete SMEB has decreased by 3% to 59,966 SYP. Throughout north Syria the SMEB price has been fluctuating over the past year with the October SMEB price reported as the highest price in northwest Syria since May 2018, but the lowest price reported since July 2018 in northeast Syria.

North: SMEB food costs increase

Throughout north Syria SMEB food prices have increased since September 2018. In northwest Syria

prices have increased for the third consecutive month rising to 38,450 SYP since September 2018. However, compared to October 2017, the cost has decreased by 8%. Individual food prices have fluctuated but in particular, in northwest Syria sub-district Kafr Takharim, there was a 75% increase in the price of bread, reportedly due to less support from humanitarian organisations in providing flour. Whereas in northeast Syria there has been a 2% increase since May 2018, six months ago, to 43,424 SYP in October 2018. Since October 2017 costs in the northeast have been stable with a slight decrease of 2%.

North: winterisation items fluctuate

Winterisation prices have fluctuated with winter blanket increasing the most at a median 115% and 65% in the northwest and northeast, respectively. Winter item prices have fluctuated throughout the north due to store competition and as some stores are selling last years clothing

items at a lower price and this years new styles at a higher price. However, winterisation items are reportedly not in stock in all locations yet due to the seasonality of the items. Furthermore, according to key informants humanitarian distributions of winter items have reportedly forced stores to lower prices to sell items.

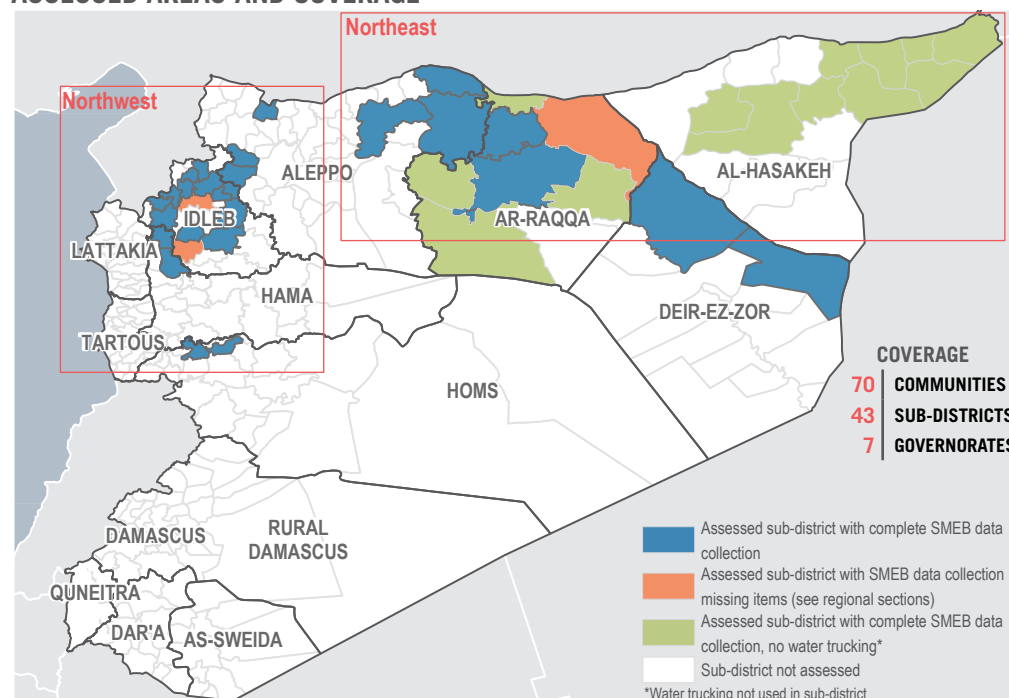
Northwest: SMEB hygiene item prices increase

SMEB hygiene prices have steadily decreased over the past year, however, this trend has changed as prices increased by 13% since September 2018 to 4,275 SYP.

Northeast: water prices decrease

Within northeast Syria, water prices have reportedly decreased by 26% to 3,015 SYP 4,500 litres, after steady increases since April 2018 and a peak in prices in September 2018. In Deir-ez-Zor sub-district Sur, water trucking prices have decreased dramatically by 82% to 900 SYP per 4,500 litres, since September 2018.

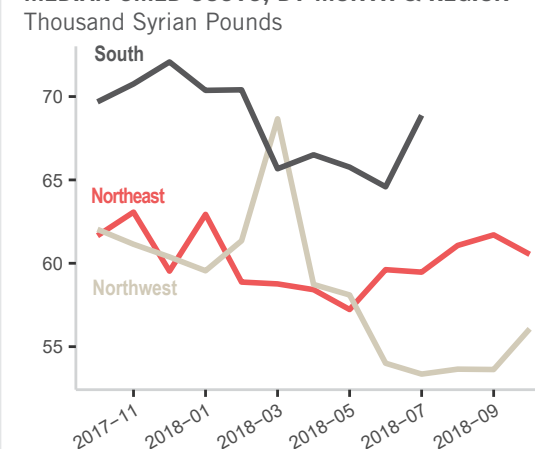
ASSESSED AREAS AND COVERAGE



MEDIAN SMEB COST IN SYP (USD), BY REGION

56,068 SYP (120.12 USD)	NORTHWEST SYRIA - HOMS, HAMA, IDLEB & WESTERN ALEPPO GOVERNORATES
59,966 SYP (129.24 USD)	NORTHEAST SYRIA - AL-HASAKEH, AL-RAQQA, DEIR-EZ-ZOR & EASTERN ALEPPO GOVERNORATES

MEDIAN SMEB COSTS, BY MONTH & REGION



KEY DEVELOPMENTS

Hygiene item prices increase

SMEB hygiene item prices have been steadily decreasing over the last year, but have increased by 13% since September 2018. Toothpaste prices have increased 25% since September with the sub-district A'zaz, within Aleppo Governorate, increasing by 183% since September and 201% since May 2018, six months ago. While hygiene item prices in Kafr Nobel sub-district, within Idleb Governorate, previously reported a 38% decrease in September 2018, in October prices increased by 47% to 3,703 SYP due to median price increases of 218% for bathing soap.

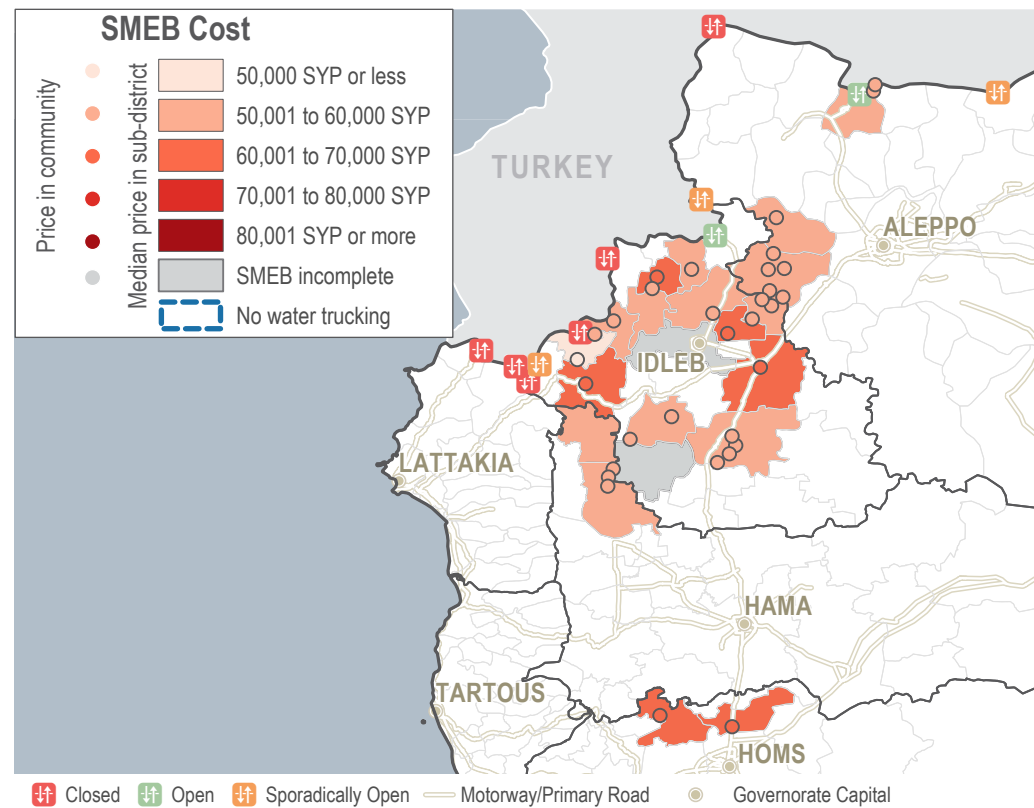
Water prices continue to increase

Water prices increased by a median of 4% to a median price of 2,543 SYP per 4,500 litres, continuing the upward trend since June 2018. In the sub-district Qourqeena, within Idleb Governorate, water prices have increased, by 114% to 2,789 SYP since September 2018. However, in Qourqeena the median price reported is still a 23% decrease since May 2018 and a 22% decrease in price since October 2017.

Winter blanket prices increase

Winter blanket prices reported a median of 2,313 SYP, which is a 115% increase since September 2018. Tefnaz and Maaret Tamsrin (Idleb Governorate) and Atareb (Aleppo Governorate) sub-districts all reported dramatic increases in price by 275%, 150% and 167%, respectively. Winter blanket prices vary between 700 SYP (Bennsh) and 5,000 SYP (Maaret Tamsrin) both in Idleb Governorate, with a median price 64% lower than in northeast Syria in October 2018, as last years winter items are being sold at a lower cost before new winter items arrive.

SMEB COST RANGES (SYP), BY SUB-DISTRICTS & COMMUNITIES



MEDIAN SMEB COSTS & CHANGES

Syrian Pounds

Sub-district	SMEB	One month change	Six month change
Northwest Syria	56,068	+5%	-3%
Armanaz	55,371	+9%	-7%
Atareb	56,068	0%	-6%
A'zaz	57,193	-4%	-10%
Bennsh	61,263	+2%	-2%
Daret Azza	50,337	+2%	+2%
Darkosh	54,482	+2%	-1%
Ehsem	54,395	-1%	-13%
Idleb	NA	NA	NA
Janudiyeh	49,516	-5%	-7%
Jisr-Ash-Shugur	60,382	+5%	-1%
Kafr Nobel	NA	NA	NA
Kafr Takharim	63,009	+20%	+15%
Maaret Tamsrin	59,550	+3%	+3%
Ma'arrat An Nu'man	56,524	+4%	+13%
Madiq Castle	52,514	+4%	-2%
Qourqeena	54,633	+10%	+3%
Saraqab	60,622	-4%	-3%
Talbiseh	61,925	-2%	NA
Taldu	62,312	-4%	NA
Tefnaz	55,037	+4%	-2%
Ziyara	54,873	+8%	+3%

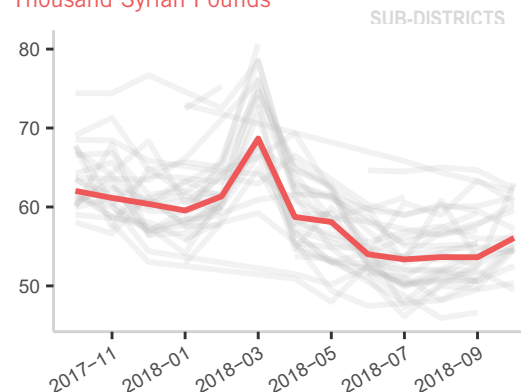
SUB-DISTRICTS WITH INCOMPLETE SMEBS IN OCTOBER

SUB-DISTRICT	MISSING ITEMS
Idleb	Cellphone data
Kafr Nobel	Cellphone data

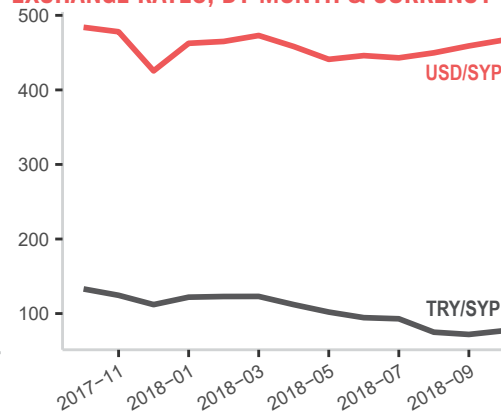
Note: A lack of data for a SMEB item does not imply a shortage.

MEDIAN SMEB COSTS, BY MONTH

Thousand Syrian Pounds



EXCHANGE RATES, BY MONTH & CURRENCY



MEDIAN SMEB FOOD ITEMS

See Page 1, Syrian Pounds

Sub-district	SMEB Food Items	One month change	Six month change
Northwest Syria	38,450	+2%	-3%
Armanaz	38,438	+9%	-5%
Atareb	38,780	0%	-6%
A'zaz	37,785	-5%	-13%
Bennsh	43,786	+3%	0%
Daret Azza	36,233	+2%	+2%
Darkosh	37,988	+1%	+3%
Ehsem	36,623	-2%	-14%
Idleb	41,965	+7%	+3%
Janudiyeh	34,606	-4%	-4%
Jisr-Ash-Shugur	41,800	+6%	-2%
Kafr Nobol	36,248	0%	-3%
Kafr Takharim	44,525	+25%	+17%
Maaret Tamsrin	41,038	+3%	+6%
Ma'arrat An Nu'man	40,780	+6%	+16%
Madiq Castle	35,914	+3%	+1%
Qourqeena	37,058	+6%	+6%
Saraqab	42,015	-7%	-3%
Talbiseh	43,265	-2%	NA
Taldu	43,265	-2%	NA
Teftnaz	38,450	+4%	0%
Ziyara	35,968	+4%	+2%

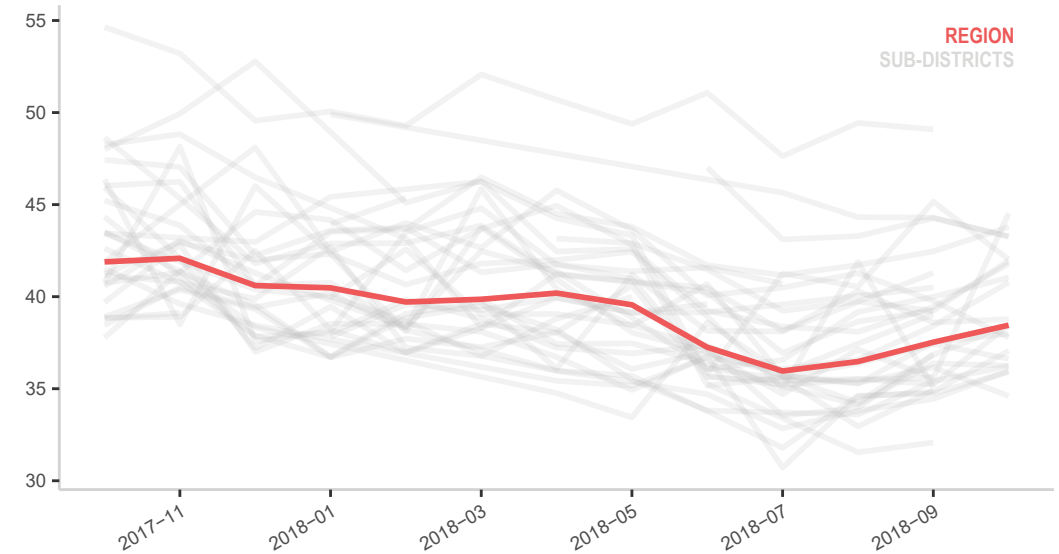
MEDIAN SMEB COOKING FUEL

Kerosene 25L, Syrian Pounds

Sub-district	SMEB Cooking Fuel	One month change	Six month change
Northwest Syria	6,250	0%	-5%
Armanaz	6,250	0%	0%
Atareb	6,250	0%	-9%
A'zaz	5,813	+3%	-7%
Bennsh	6,313	-5%	-16%
Daret Azza	6,250	0%	0%
Darkosh	6,563	+5%	0%
Ehsem	5,938	-10%	-21%
Idleb	6,250	-9%	-17%
Janudiyeh	6,250	0%	0%
Jisr-Ash-Shugur	6,250	0%	0%
Kafr Nobol	5,938	-5%	-10%
Kafr Takharim	5,625	0%	-18%
Maaret Tamsrin	7,188	+15%	-4%
Ma'arrat An Nu'man	6,313	+1%	-6%
Madiq Castle	6,438	+6%	-14%
Qourqeena	6,250	+11%	0%
Saraqab	6,500	+4%	-7%
Talbiseh	3,500	0%	NA
Taldu	3,500	0%	NA
Teftnaz	5,313	+6%	-15%
Ziyara	8,750	+40%	+27%

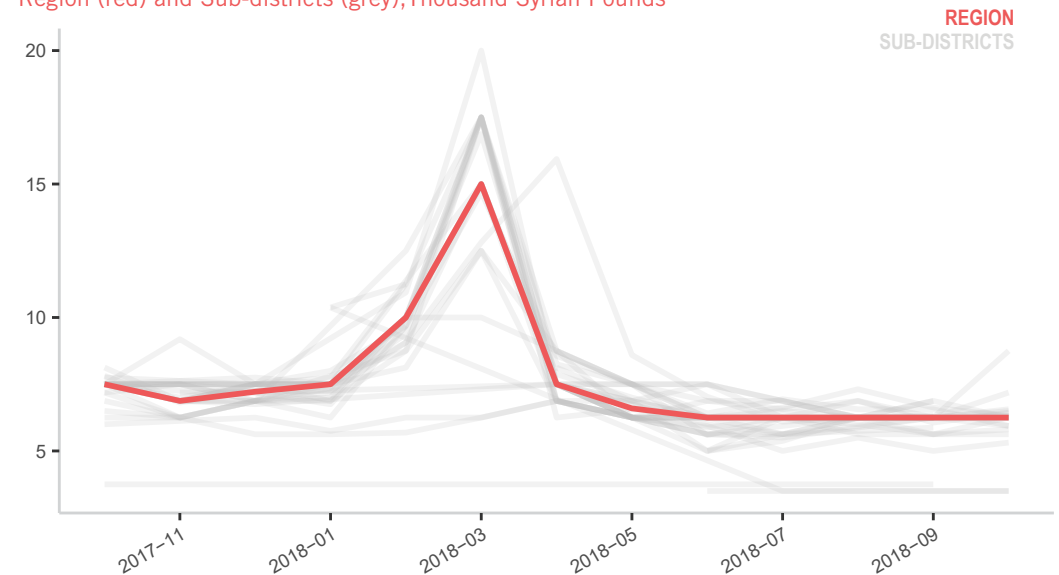
MEDIAN SMEB FOOD COSTS, BY MONTH

Region (red) and Sub-districts (grey), Thousand Syrian Pounds



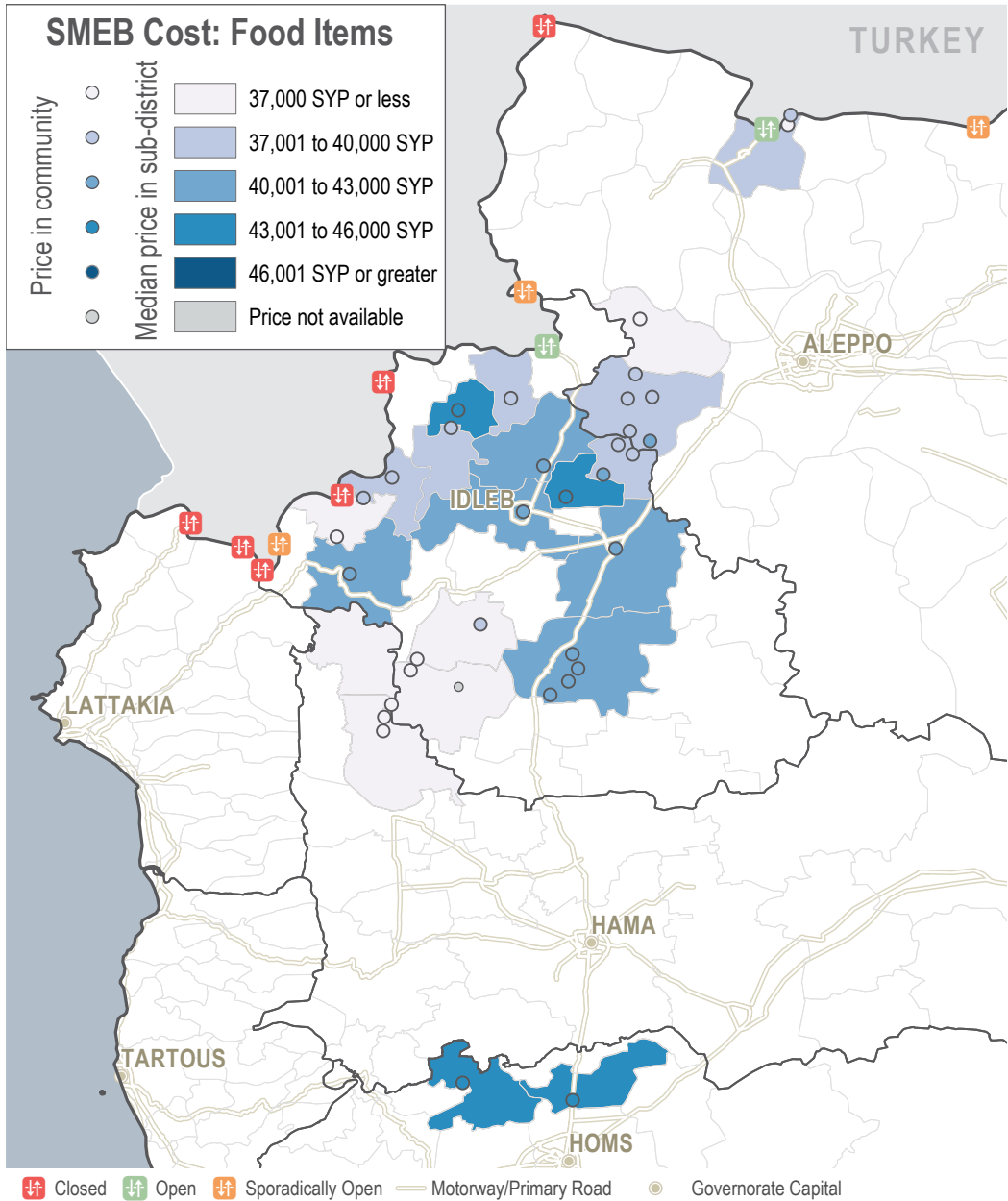
MEDIAN SMEB COOKING FUEL COSTS, BY MONTH

Region (red) and Sub-districts (grey), Thousand Syrian Pounds



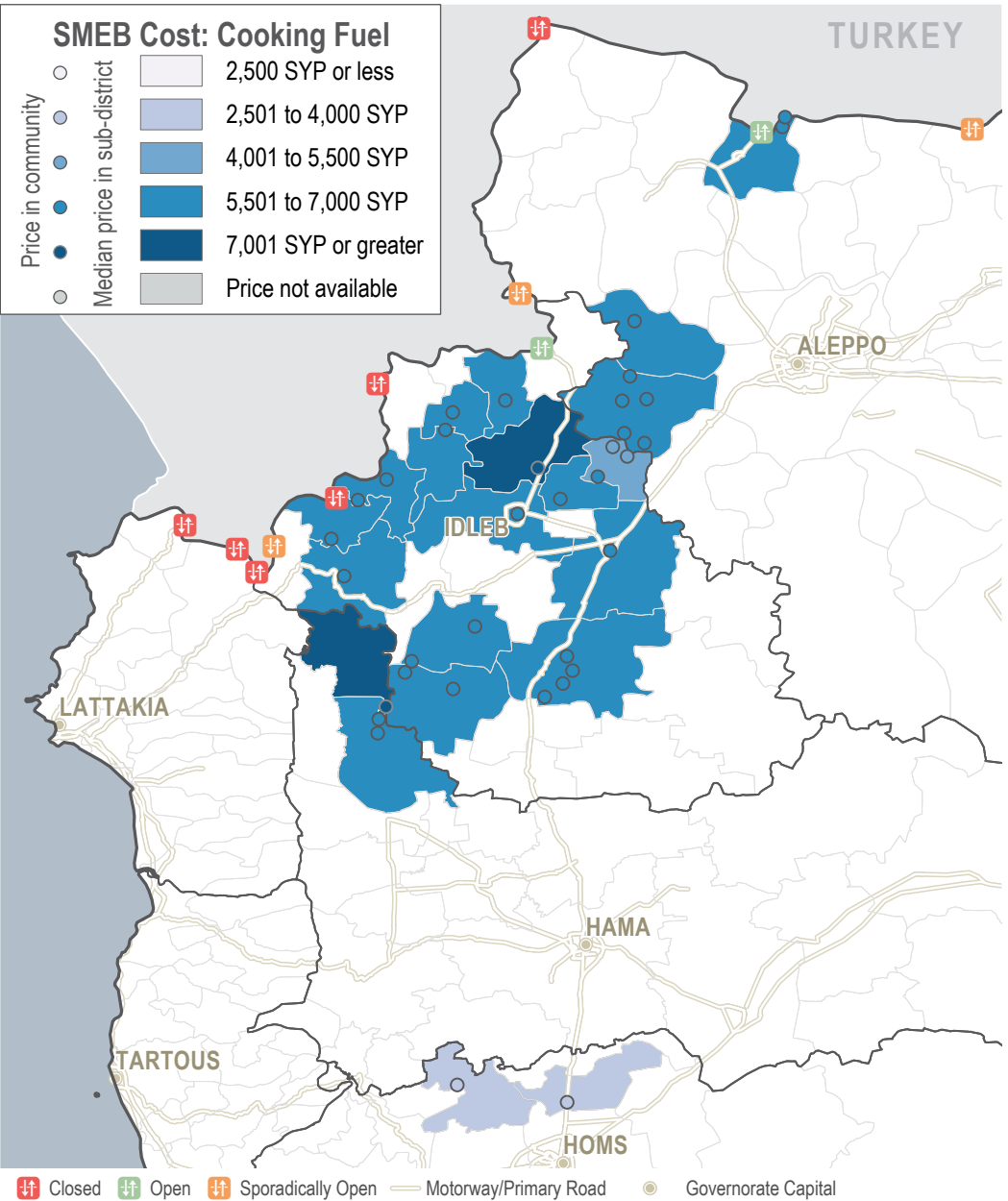
SMEB FOOD ITEMS

Sub-districts & communities, Syrian Pounds



SMEB COOKING FUEL

Sub-districts & Communities, Syrian Pounds



MEDIAN SMEB WATER TRUCKING

4,500L, Syrian Pounds

Sub-district	SMEB Water Truck	One month change	Six month change
Northwest Syria	2,543	+4%	+3%
Armanaz	2,045	-17%	-23%
Atareb	1,620	0%	-5%
A'zaz	2,993	-5%	-11%
Bennsh	1,868	-6%	+17%
Daret Azza	1,710	0%	+19%
Darkosh	2,565	0%	-8%
Ehsem	2,655	+3%	+18%
Idleb	2,070	+35%	+130%
Janudiyeh	2,025	-5%	-5%
Jisr-Ash-Shugur	3,060	0%	0%
Kafr Nobol	2,678	+4%	+35%
Kafr Takharim	3,375	+21%	+30%
Maaret Tamsrin	2,025	-18%	-9%
Ma'arrat An Nu'man	2,543	-10%	+57%
Madiq Castle	2,093	-2%	-2%
Qourqeena	2,789	+114%	-23%
Saraqab	2,610	+4%	-5%
Talbiseh	3,240	+3%	NA
Taldu	3,600	-20%	NA
Teftnaz	2,070	+10%	-13%
Ziyara	2,250	0%	-21%

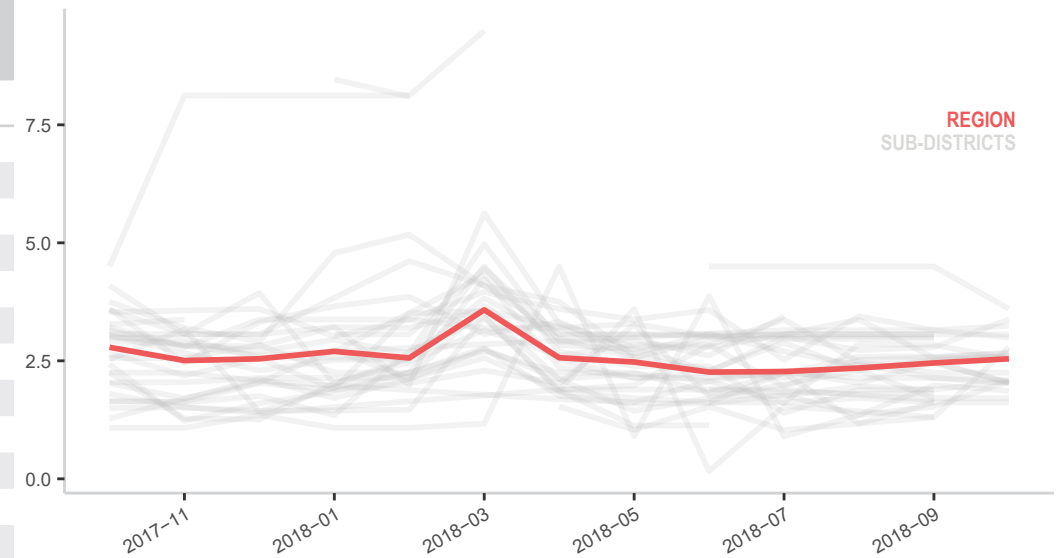
MEDIAN TRANSPORT FUEL PRICE

Diesel and Petrol 1L (Government of Syria and Manually Refined), Syrian Pounds

Sub-district	Diesel and Petrol	One month change	Six month change
Northwest Syria	308	-4%	0%
Armanaz	310	-4%	+13%
Atareb	300	-6%	-3%
A'zaz	316	+9%	+11%
Bennsh	306	+1%	-3%
Daret Azza	306	+13%	+2%
Darkosh	304	+7%	-4%
Ehsem	308	+3%	-9%
Idleb	349	+9%	+9%
Janudiyeh	317	+1%	+10%
Jisr-Ash-Shugur	261	-13%	-9%
Kafr Nobol	279	-12%	-11%
Kafr Takharim	313	+16%	+9%
Maaret Tamsrin	342	+30%	+13%
Ma'arrat An Nu'man	311	0%	+1%
Madiq Castle	302	+3%	-2%
Qourqeena	310	+18%	+9%
Saraqab	318	-1%	+4%
Talbiseh	308	-9%	NA
Taldu	308	-9%	NA
Teftnaz	269	-16%	-1%
Ziyara	296	-1%	-3%

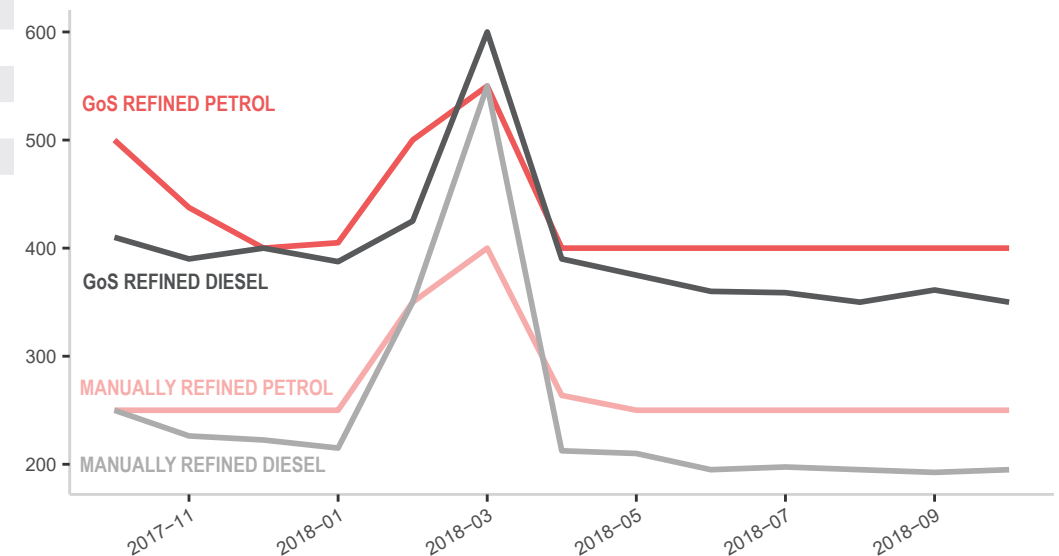
MEDIAN SMEB WATER TRUCKING COSTS, BY MONTH

Thousand Syrian Pounds



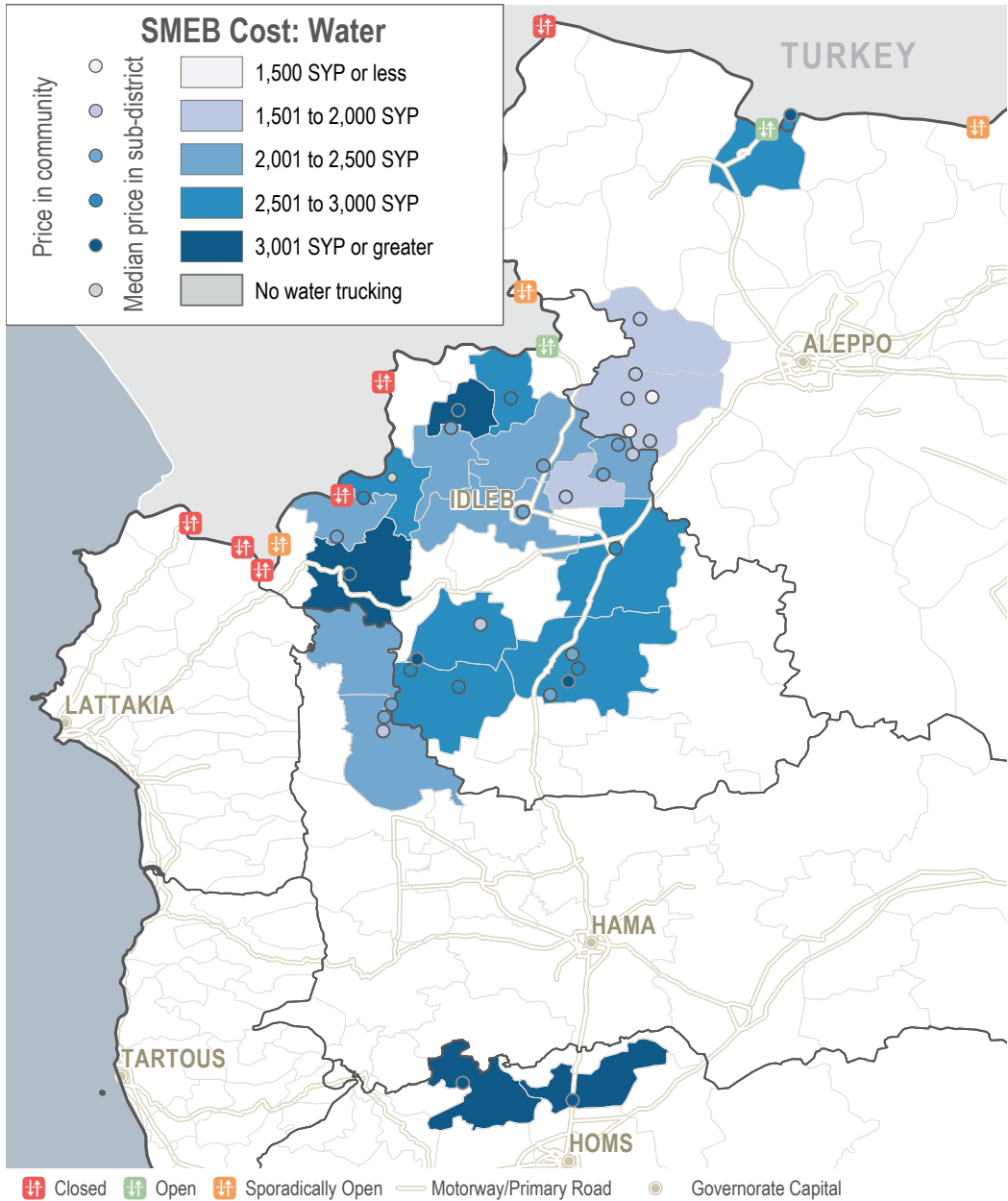
MEDIAN TRANSPORT FUEL COSTS, BY MONTH & TYPE

Syrian Pounds



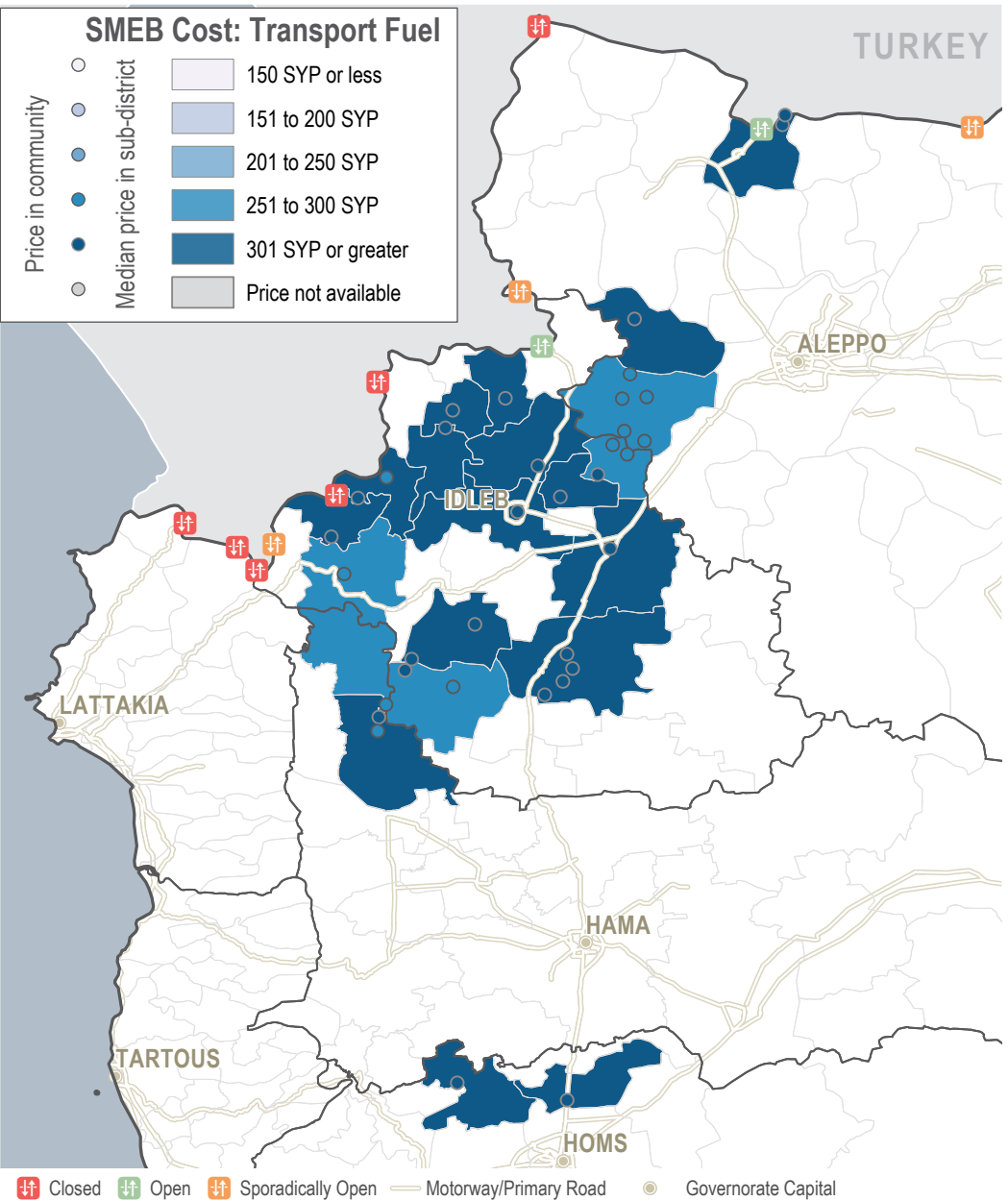
SMEB WATER TRUCKING

Sub-districts & communities, Syrian Pounds



TRANSPORT FUEL

Sub-districts & communities, Syrian Pounds



MEDIAN SMEB HYGIENE ITEMS

12 bars soap, 4 packs of 10 sanitary pads, 200g toothpaste, Syrian Pounds

Sub-district	SMEB Hygiene Items	One month change	Six month change
Northwest Syria	4,275	+13%	-5%
Armanaz	4,275	+33%	-12%
Atareb	5,006	-2%	-9%
A'zaz	4,813	+9%	0%
Bennsh	4,548	+4%	-4%
Daret Azza	2,233	-4%	-7%
Darkosh	3,353	+1%	-20%
Ehsem	4,935	+23%	-4%
Idleb	4,318	+18%	-10%
Janudiyeh	2,980	-8%	-33%
Jisr-Ash-Shugur	4,609	+5%	+2%
Kafr Nobol	3,703	+47%	+33%
Kafr Takharim	4,588	+7%	+60%
Maaret Tamsrin	4,645	0%	-1%
Ma'arrat An Nu'man	2,545	-5%	-5%
Madiq Castle	4,031	+8%	+4%
Qourqeena	4,225	+7%	+5%
Saraqab	4,668	+6%	-2%
Talbiseh	3,600	-7%	NA
Taldu	3,600	-7%	NA
Teftnaz	4,690	+1%	+4%
Ziyara	3,678	-3%	-3%

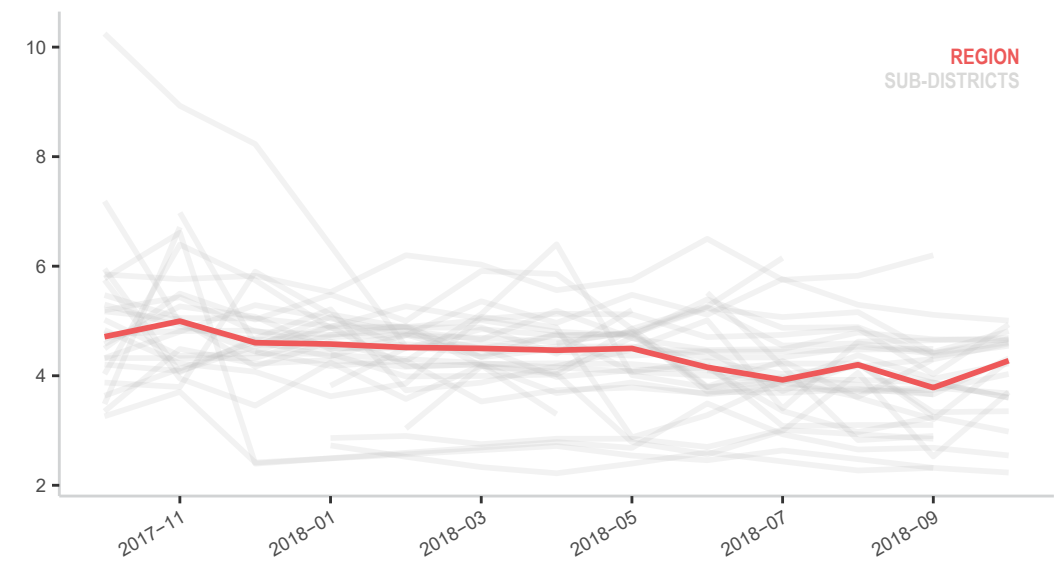
MEDIAN SMEB CELLPHONE DATA

1GB data, Syrian Pounds

Sub-district	SMEB Phone Data	One month change	Six month change
Northwest Syria	500	0%	0%
Armanaz	500	+67%	-33%
Atareb	500	0%	0%
A'zaz	1,800	-25%	+80%
Bennsh	475	-3%	-10%
Daret Azza	400	0%	0%
Darkosh	213	0%	-63%
Ehsem	450	-5%	0%
Idleb	NA	NA	NA
Janudiyeh	200	-60%	-56%
Jisr-Ash-Shugur	450	-14%	-22%
Kafr Nobol	NA	NA	NA
Kafr Takharim	500	-17%	0%
Maaret Tamsrin	500	0%	0%
Ma'arrat An Nu'man	400	0%	-11%
Madiq Castle	375	-6%	-21%
Qourqeena	500	0%	0%
Saraqab	600	0%	0%
Talbiseh	4,000	0%	NA
Taldu	4,000	0%	NA
Teftnaz	675	+4%	+13%
Ziyara	400	+14%	-11%

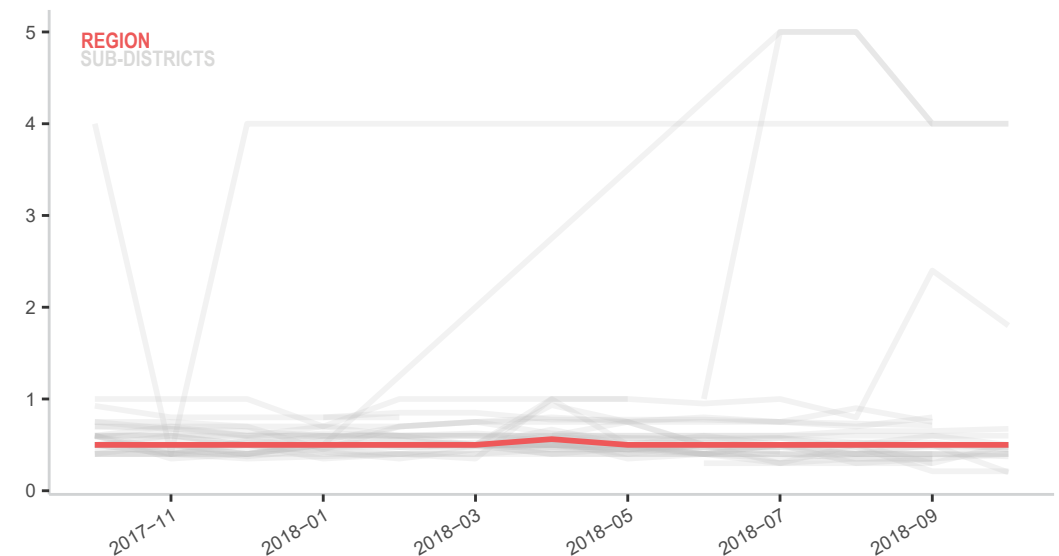
MEDIAN SMEB HYGIENE ITEMS COSTS, BY MONTH

Thousand Syrian Pounds



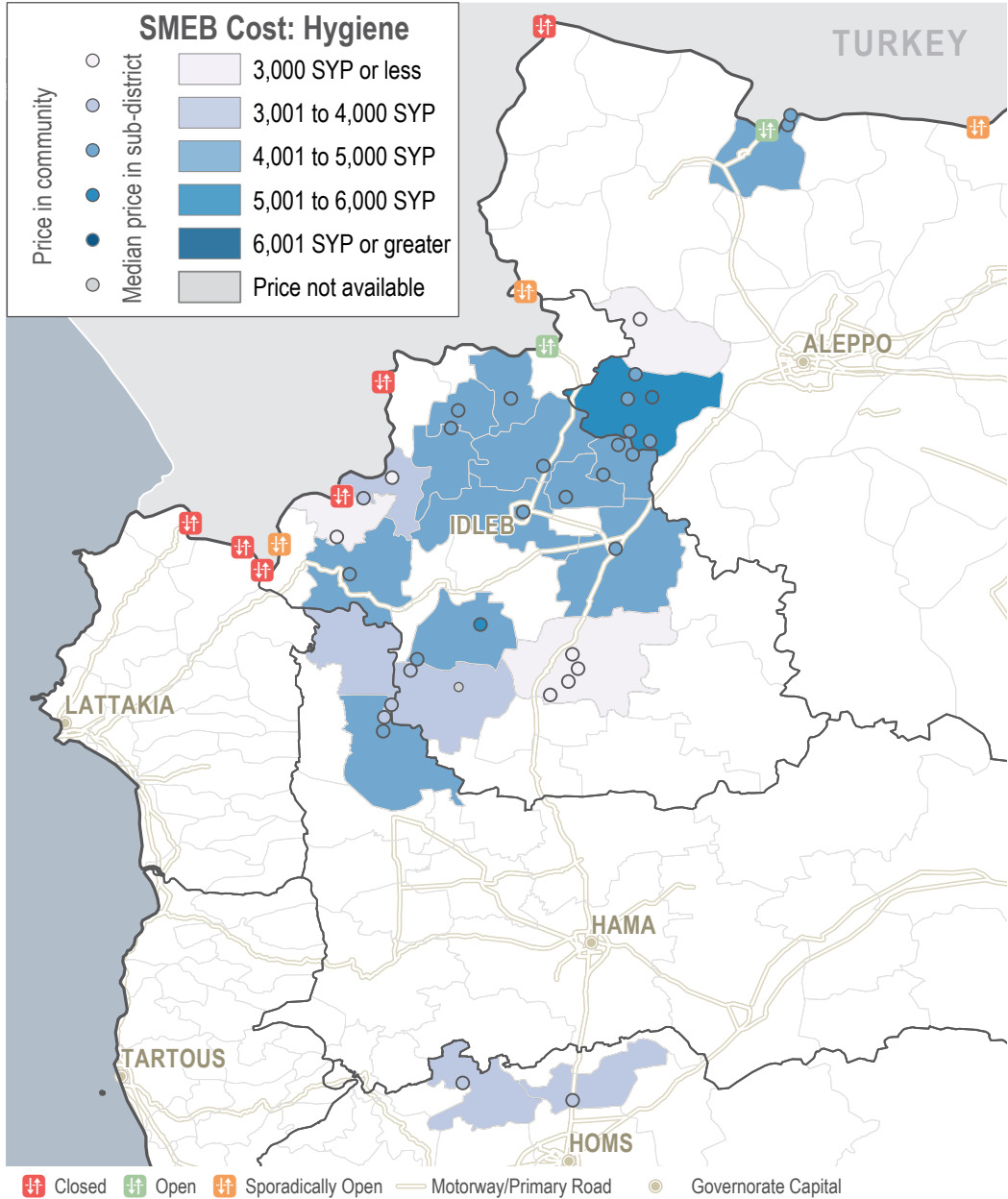
MEDIAN SMEB CELLPHONE DATA COSTS, BY MONTH

Thousand Syrian Pounds



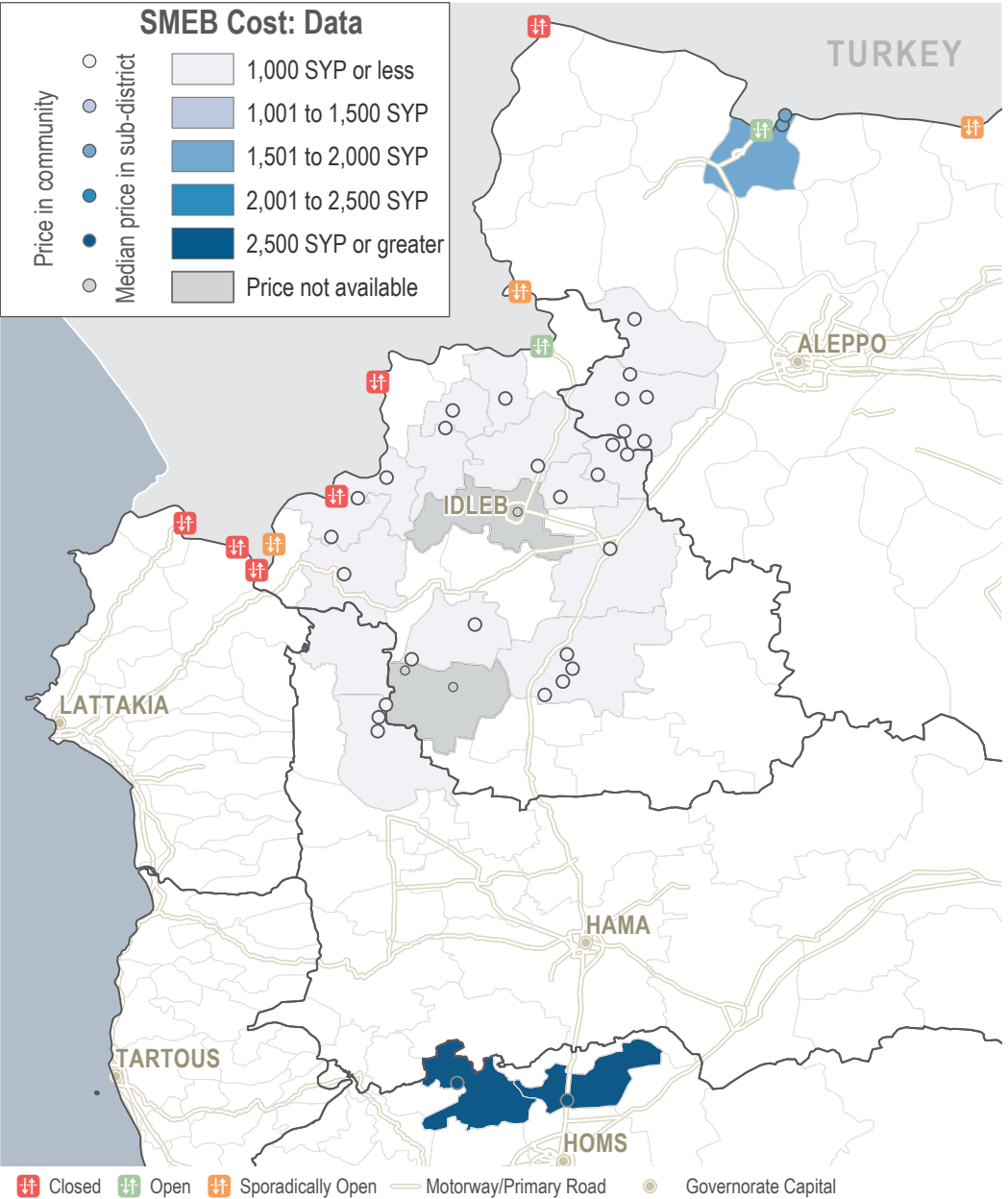
SMEB HYGIENE ITEMS

Sub-districts & Communities, Syrian Pounds



SMEB CELLPHONE DATA

Sub-districts & Communities, Syrian Pounds



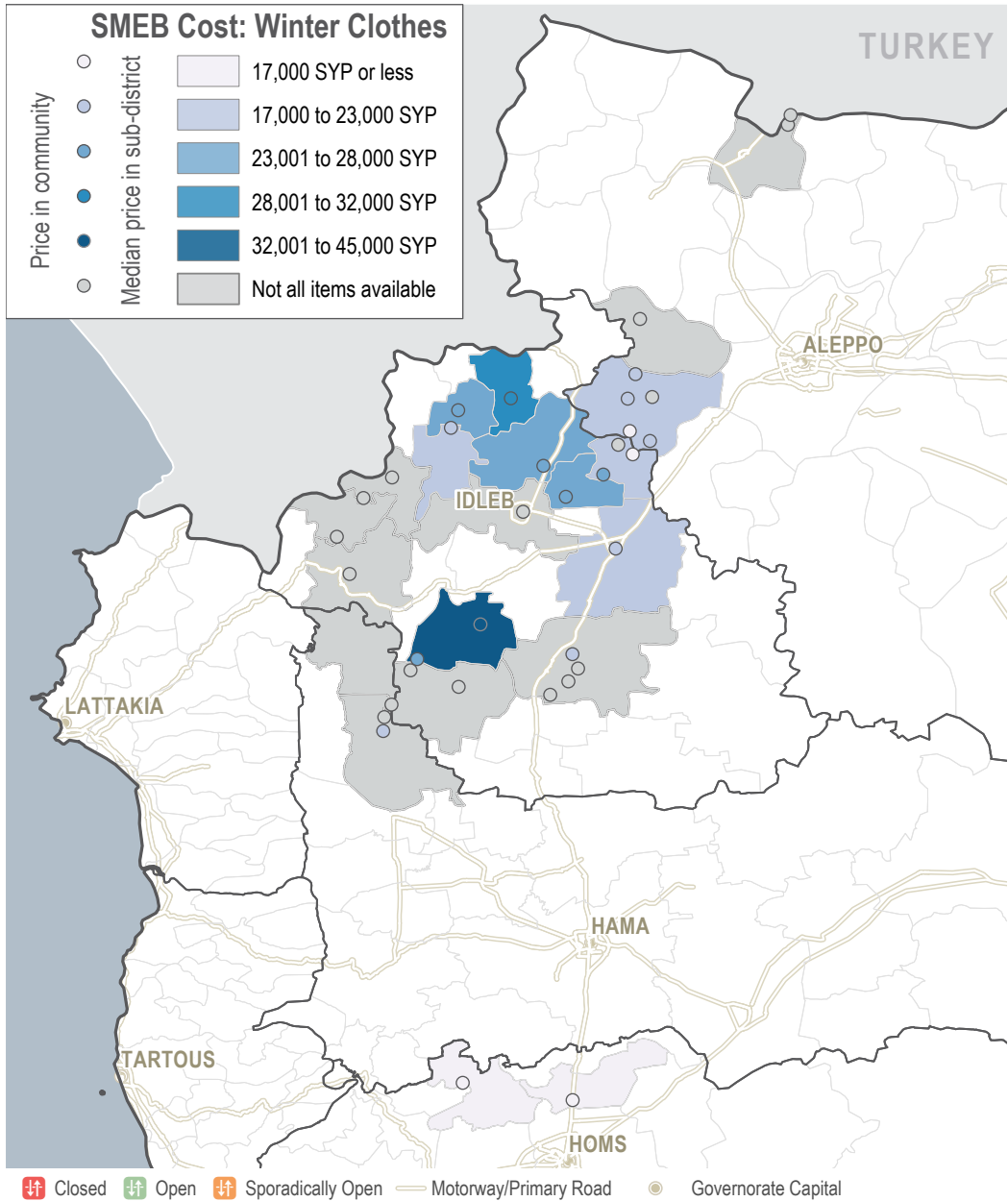
MEDIAN WINTERISATION AND HOUSEHOLD ITEMS

Per 1 winter item, Syrian Pounds

Sub-district	Mens jacket	One month change	Wom-ens jacket	One month change	Child's jacket	One month change	Mens boots	One month change	Wom-ens boots	One month change	Child's boots	One month change	Adult hat	One month change	Child's hat	One month change	Blanket	One month change	Mat-tress	One month change
Northwest	5,800	-17%	6,400	-22%	3,100	+1%	3,000	0%	2,950	+18%	1,700	-15%	575	-21%	500	0%	2,313	+115%	4,350	-13%
Armanaz	6,000	NA	5,250	NA	2,750	NA	2,000	+1%	2,000	NA	1,000	NA	NA	NA	NA	NA	1,500	NA	2,500	NA
Atareb	3,000	-59%	3,150	-56%	2,625	-16%	2,900	NA	2,950	+18%	1,625	-19%	500	0%	500	+25%	2,000	+167%	2,500	0%
A'zaz	NA	NA	NA	NA	NA	NA	NA	0%	NA	NA	NA	NA	NA	NA	NA	NA	1,200	+14%	2,000	-6%
Bennsh	5,800	-3%	6,800	0%	3,100	+3%	2,400	NA	2,600	+4%	1,700	0%	600	0%	550	+10%	700	0%	4,500	-10%
Daret Azza	NA	NA	NA	NA	NA	NA	NA	NA	NA	NA	NA	NA	NA	NA	NA	NA	7,500	+15%	5,000	+16%
Darkosh	NA	NA	NA	NA	NA	NA	NA	NA	NA	NA	NA	NA	NA	NA	NA	NA	6,250	-1%	5,000	0%
Ehsem	8,250	NA	11,000	NA	4,000	NA	5,000	NA	4,500	NA	2,000	NA	550	NA	525	NA	3,500	+40%	5,000	0%
Idlib	NA	NA	NA	NA	NA	NA	NA	NA	NA	NA	NA	NA	NA	NA	NA	NA	NA	NA	NA	NA
Janudiyeh	NA	NA	NA	NA	NA	NA	NA	NA	NA	NA	NA	NA	NA	NA	NA	NA	NA	NA	NA	NA
Jisr-Ash-Shugur	NA	NA	NA	NA	NA	NA	NA	NA	NA	NA	NA	NA	NA	NA	NA	NA	NA	NA	NA	NA
Kafr Nobol	NA	NA	NA	NA	NA	NA	NA	NA	NA	NA	NA	NA	NA	NA	NA	NA	NA	NA	NA	NA
Kafr Takharim	5,000	NA	7,500	NA	4,500	NA	3,500	+17%	1,500	NA	1,500	NA	NA	NA	NA	NA	4,000	NA	3,500	NA
Maaret Tamsrin	6,000	0%	5,500	0%	4,000	+33%	3,500	NA	3,500	+40%	2,000	0%	500	0%	300	-40%	5,000	+150%	3,000	-48%
Ma'arrat An	NA	NA	NA	NA	NA	NA	NA	NA	NA	NA	NA	NA	NA	NA	NA	NA	NA	NA	NA	NA
Madiq Castle	NA	NA	NA	NA	NA	NA	NA	NA	NA	NA	NA	NA	NA	NA	NA	NA	NA	NA	NA	NA
Qourqeena	8,000	NA	11,000	NA	2,000	NA	3,500	-4%	3,750	NA	1,500	NA	NA	NA	NA	NA	1,500	NA	5,000	NA
Saraqab	5,700	+4%	6,400	-2%	2,500	0%	2,400	NA	2,300	+5%	1,700	+13%	600	0%	500	+25%	800	+33%	4,200	+40%
Talbiseh	NA	NA	NA	NA	NA	NA	3,000	NA	3,000	NA	2,500	NA	600	NA	500	NA	NA	NA	NA	NA
Taldu	NA	NA	NA	NA	NA	NA	3,000	-15%	3,000	NA	2,500	NA	700	NA	500	NA	NA	NA	NA	NA
Teftnaz	5,600	+7%	6,350	-2%	3,150	+13%	2,600	NA	2,200	-29%	1,600	+7%	500	-35%	375	-17%	2,625	+275%	9,600	+174%
Ziyara	NA	NA	NA	NA	NA	NA	NA	NA	NA	NA	NA	NA	NA	NA	NA	NA	NA	NA	NA	NA

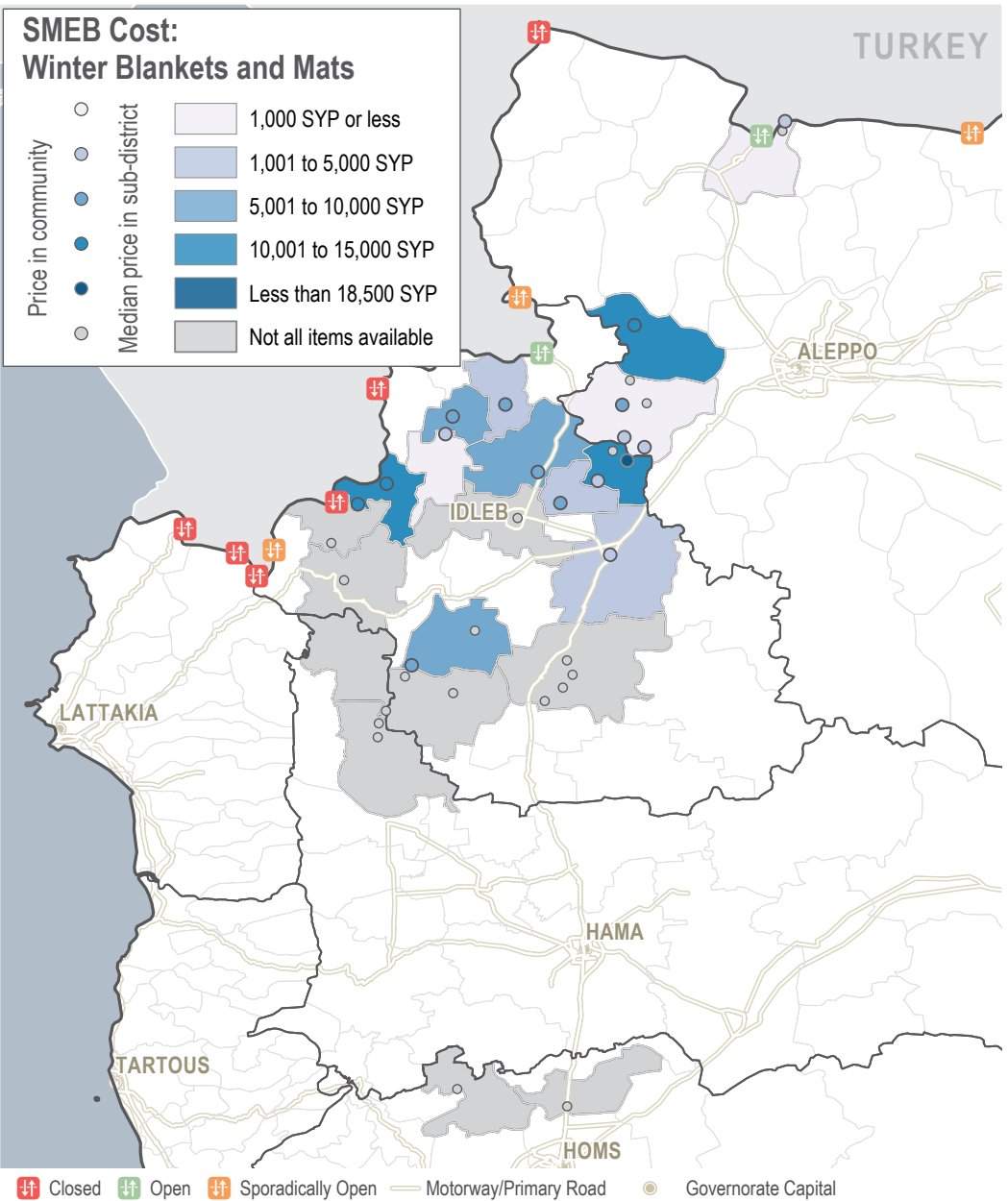
WINTER CLOTHES

Sub-districts & Communities, Syrian Pounds



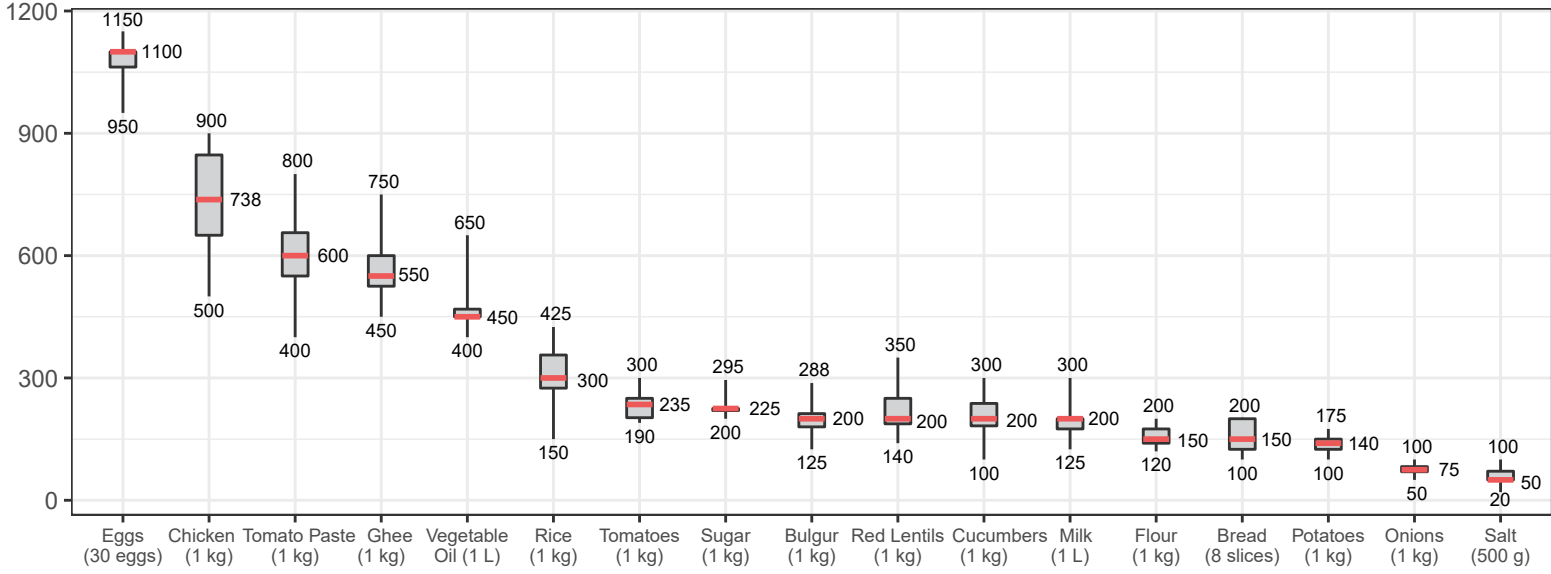
WINTER BLANKETS

Sub-districts & Communities, Syrian Pounds



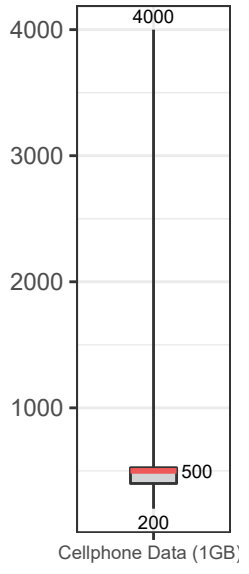
ASSESSED FOOD ITEMS

Syrian Pounds



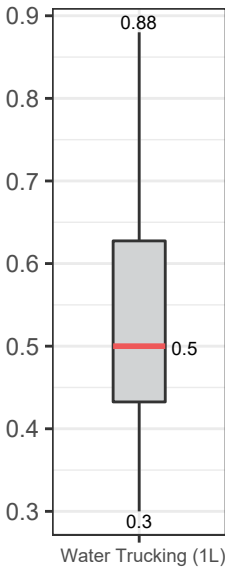
CELLPHONE DATA

1GB



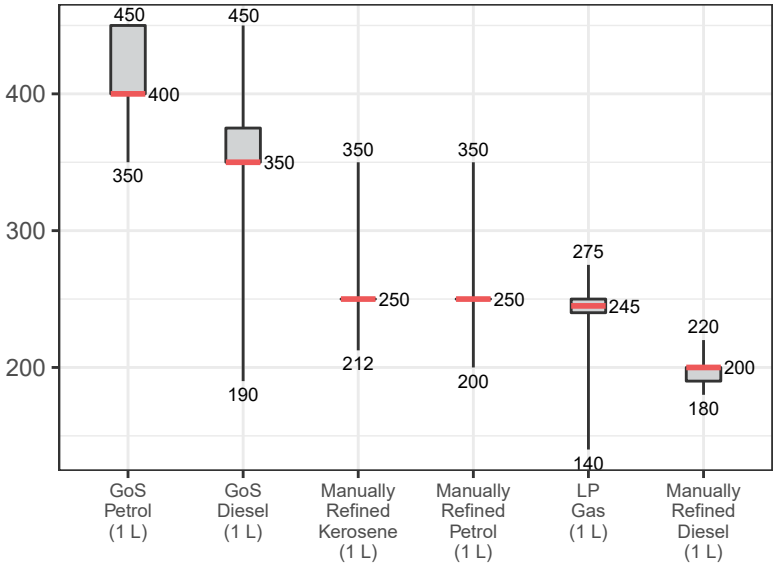
WATER TRUCKING

Syrian Pounds



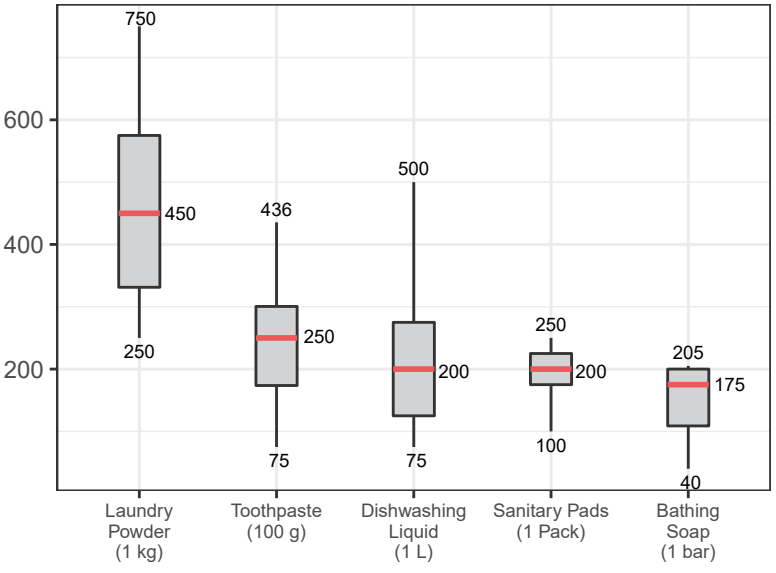
ASSESSED FUEL ITEMS

Syrian Pounds

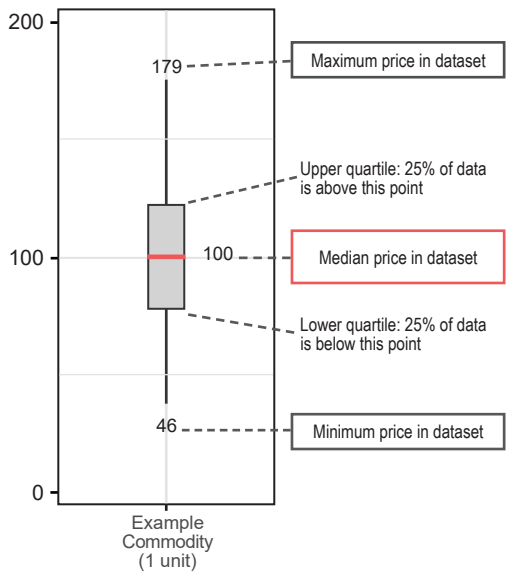


ASSESSED HYGIENE ITEMS

Syrian Pounds



READING BOXPLOTS



METHODOLOGY

To be included in the Syria Market Monitoring Exercise, markets must be permanent in nature, large enough to support at least two wholesalers, and diverse enough to provide a sufficient variety of goods and commodities. The shops surveyed within each market must be housed in permanent structures and must sell certain items to be eligible for inclusion.

Participating organisations train their enumerators on the Market Monitoring methodology and data collection tools using standard training materials developed by REACH. Each enumerator aims to assess three to five shops of each type in the main market in their assigned sub-district, using surveys to collect information about prices, current product inventory and the time needed to replace current stocks. In sub-districts where direct

surveying by enumerators is not possible, such as Lattakia and Deir-ez-Zor, data collection is conducted remotely through key informants such as shop owners, suppliers and consumers.

A survey form is deployed on KoBo each month to capture price and stock information from different types of establishments, including grocery stores, fuel traders, currency exchange shops, water trucking services and mobile phone shops, among others. Nearly all participating partners submit their data to these KoBo forms, using the KoBoCollect Android app to upload data. A small number of partners, by prior permission, collect data using fully harmonised data collection tools deployed on other platforms, then

submit their raw data to REACH for standardisation, compilation and cleaning.

Following data collection, REACH compiles and cleans all partners' data, normalising prices and cross-checking outliers. The cleaned data is then analysed by SMEB costs, components of the SMEB, and by commodities. These trends are observed at the sub-district-level and, when possible, at the community-level. Prices are divided into quartiles and boxplots are created to help CBR-TWG members understand the distribution of prices. To illustrate local variations in prices and availability, REACH uses the collected data to map the price of an SMEB in each sub-district and adds illustrations of surrounding border crossings, with data sourced from OCHA. In addition,

each SMEB component costs and transport fuel prices are graphed to visualize trends over time. The cleaned data sets are available on the REACH Resource Centre and are distributed to all participating partners, as well as to interested clusters and the broader humanitarian community.

Winterisation items have been added to the market monitoring exercise and data collection will continue for these items over winter, until February 2019. Whilst other commodities are bought regularly by families, winterisation items are not expected to be bought regularly and may be one off purchases for each family member.

CHALLENGES AND LIMITATIONS

As the Syria Market Monitoring Exercise currently includes 14 partners based in 2 hubs, achieving a consistent approach is inherently challenging. Participating organisations are therefore requested to adopt harmonised data collection methodologies and tools to ensure that the data uploaded is as accurate as possible.

Confirming commodity shortages in certain communities was difficult due to a lack of information about general market availability. When follow-ups were unable to confirm these shortages, this is stated in the text.

Because this exercise collects data directly from vendors and because it relies on partner organizations for its wide coverage, the exercise may lose coverage sporadically or for longer periods of time owing to challenges in accessing locations or due to loss in the shared data collection capacity of the project. This impacts the ability to report on trends, as can be seen in the line graphs and 'NA' values in the tables.

CHANGES TO COVERAGE

Given security and access constraints in the south of Syria, data collection has been unable to take place since July 2018. Due to access issues and an escalation of conflict, coverage was lost in Eastern Ghouta in March 2018.

CALCULATING 'MEDIAN CHEAPEST PRICE'

This figure is calculated by taking the median of the minimum-reported prices of a region's sub-districts. In turn, the minimum-reported prices for each sub-district were taken from the median of the minimum-reported prices of the constituent towns assessed.

CALCULATING SURVIVAL MINIMUM EXPENDITURE BASKET (SMEB) COSTS

The cost of a SMEB is calculated for each assessed sub-districts by calculating the median cheapest price of each SMEB commodity in that sub-district, then multiplying these medians by the number of units that an average Syrian household requires to purchase in a month. The composition of the SMEB can be found on page 1 and SMEB vegetables includes potatoes, tomatoes, onions and cucumbers.

WHAT IS THE CASH-BASED RESPONSES TECHNICAL WORKING GROUP?

The Cash-Based Responses Technical Working Group (CBR-TWG) was established in May 2014 to analyse the impact of the ongoing conflict on markets in Syria and guide the implementation of humanitarian cash and voucher programmes within those markets. REACH and the CBR-TWG have been partners on the Syria Market Monitoring Exercise since early 2015. Since February 2017, the exercise expanded coverage into the south, bringing monthly market assessments to communities in Damascus, Rural Damascus, Dar'a and Quneitra governorates. However, we have since lost coverage in the south of Syria.

ABOUT REACH

REACH is a joint initiative of two international non-governmental organizations — ACTED and IMPACT Initiatives — and the UN Operational Satellite Applications Programme (UNOSAT). REACH facilitates the development of information tools and products that enhance the capacity of aid actors to make evidence-based decisions in emergency, recovery and development contexts. By doing so, REACH contributes to ensuring that communities affected by emergencies receive the support they need. All REACH activities are conducted in support to and within the framework of inter-agency aid coordination mechanisms. For more information, please visit our website at www.reach-initiative.org, contact us directly at geneva@reach-initiative.org or follow us on Twitter at [@REACH_info](https://twitter.com/REACH_info).