

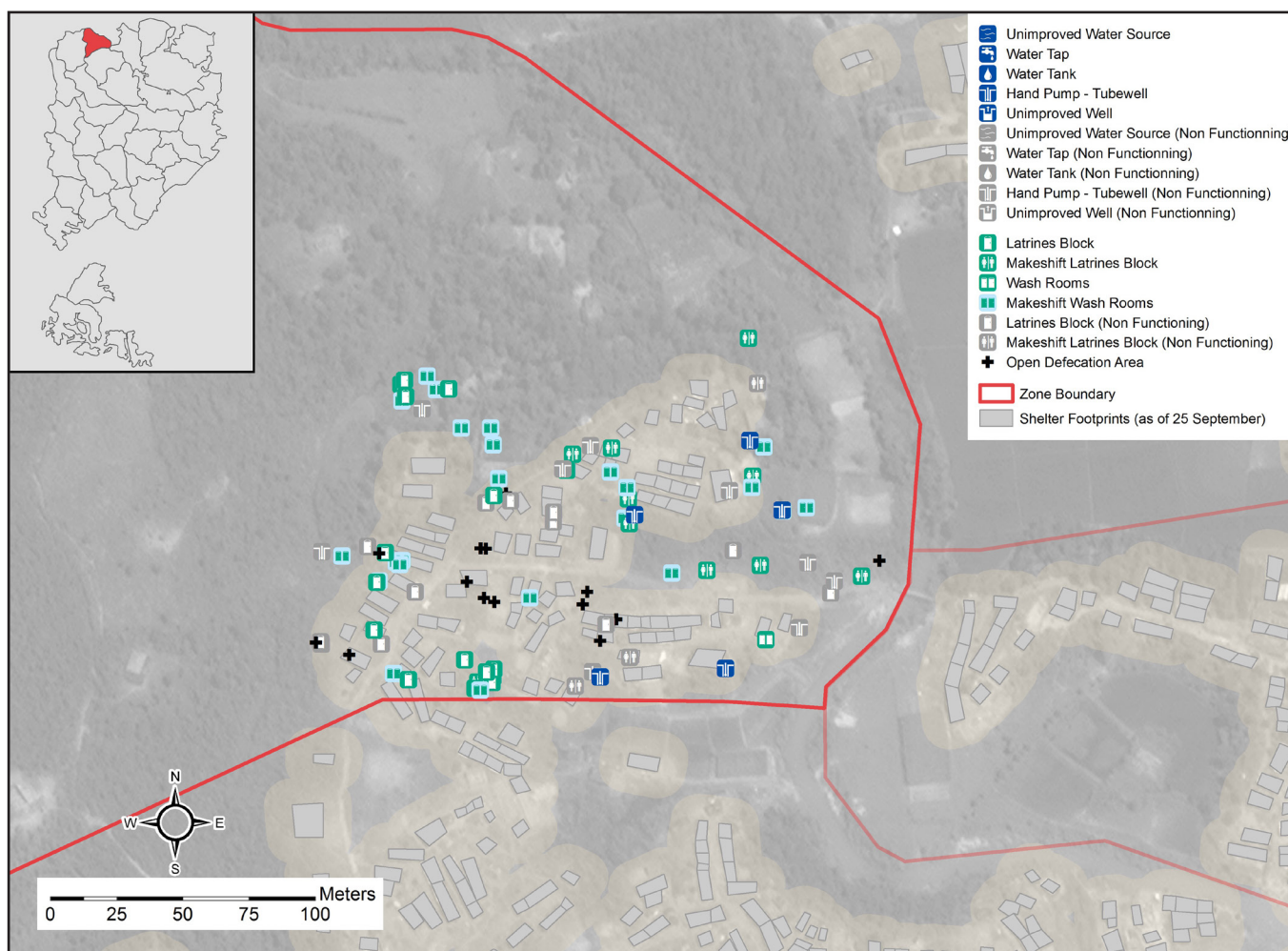


This profile provides an overview of WASH infrastructure within Zone AA in Ukhiya, Cox's Bazar. Primary data represents infrastructure present up to 18 October 2017. Findings should be considered indicative only.

# of individuals:	7,072	# of latrines:	68	# of handpumps, % of functional	
# of shelters:	92	% of safe latrines ¹ :	63%	handpumps:	14 (36%)
# of individuals per shelter:	77	% of functional latrines:	71%	# of bathing facilities:	27

Site Map

Coordinates: 21.212935, 92.146134



Key WASH findings

Targets based on WASH Sector Standards/Indicators for Rohingya response, Sphere Minimum Standards/Indicators as well as DPHE Minimum Standards/Indicators. *Minimum standard/indicator reached, *More than 75% minimum standard/indicator reached, *More than 50% minimum standard/indicator reached, *Less than 50% of minimum standard/indicator reached

	Target	Current Round	Achievement
# of people per functioning hand pump	max. 500 ²	1,414	●
% of shelters within 200 meters of a functioning hand pump ³	100%	100%	●
# of people per functional (non-full) latrine	max. 50 ⁴	147	●
# of people per safe latrine	N/A	164	N/A
% of shelters within 50 meters to a functional (non-full) latrine	100%	100%	●
% of latrines that are at least 10 meters away from a water point	100%	66%	●

¹ Safe refers to fully covered latrines (i.e. a latrine with four walls, a roof and a door) ² This target is based on standards for the long term (6 months+), for the immediate and medium phase (0-6 months) it is 500. ³ The distance is based on standards for the long term (6 months+), for the immediate phase (0-3 months) it is 750 meters and for the medium phase (3-6 months) 500 meters. ⁴ This target is based on standards for the long term (6 months+), for the immediate phase (0-3 months) it is 100 and for the medium phase (3-6 months) 75.

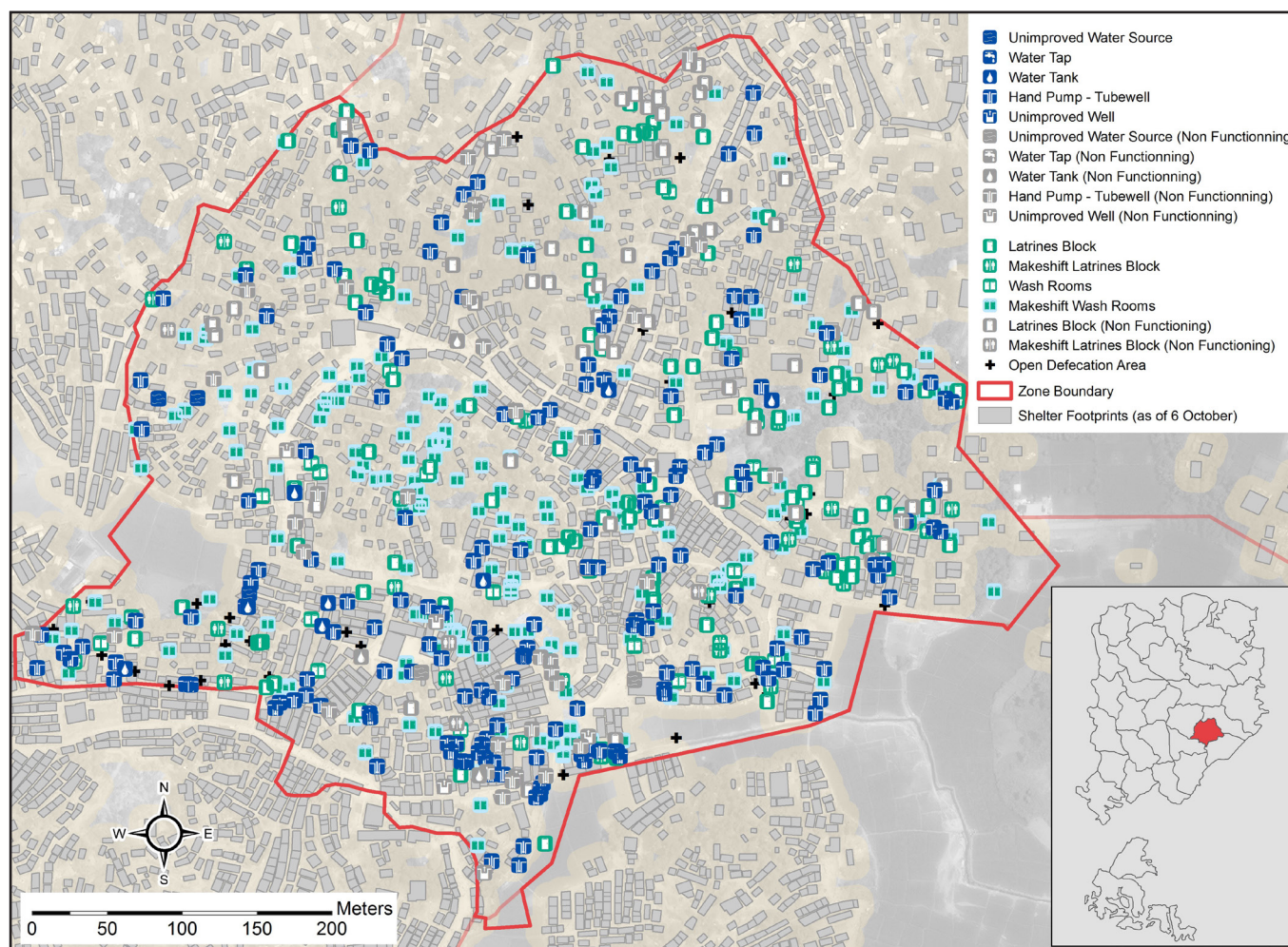


This profile provides an overview of WASH infrastructure within Balukhali MS in Ukhiya, Cox's Bazar. Primary data represents infrastructure present up to 18 October 2017. Findings should be considered indicative only.

# of individuals:	47,307	# of latrines:	413	# of handpumps, % of functional handpumps:	214 (83%)
# of shelters:	1916	% of safe latrines ¹ :	89%		
# of individuals per shelter:	24	% of functional latrines:	72%	# of bathing facilities:	290

Site Map

Coordinates: 21.191434, 92.159236



Key WASH findings

Targets based on WASH Sector Standards/Indicators for Rohingya response, Sphere Minimum Standards/Indicators as well as DPHE Minimum Standards/Indicators. *Minimum standard/indicator reached, *More than 75% minimum standard/indicator reached, *More than 50% minimum standard/indicator reached, *Less than 50% of minimum standard/indicator reached

	Target	Current Round	Achievement
# of people per functioning hand pump	max. 500 ²	267	●
% of shelters within 200 meters of a functioning hand pump ³	100%	100%	●
# of people per functional (non-full) latrine	max. 50 ⁴	159	●
# of people per safe latrine	N/A	129	N/A
% of shelters within 50 meters to a functional (non-full) latrine	100%	93%	●
% of latrines that are at least 10 meters away from a water point	100%	69%	●

¹ Safe refers to fully covered latrines (i.e. a latrine with four walls, a roof and a door). ² This target is based on standards for the long term (6 months+), for the immediate and medium phase (0-6 months) it is 500. ³ The distance is based on standards for the long term (6 months+), for the immediate phase (0-3 months) it is 750 meters and for the medium phase (3-6 months) 500 meters. ⁴ This target is based on standards for the long term (6 months+), for the immediate phase (0-3 months) it is 100 and for the medium phase (3-6 months) 75.

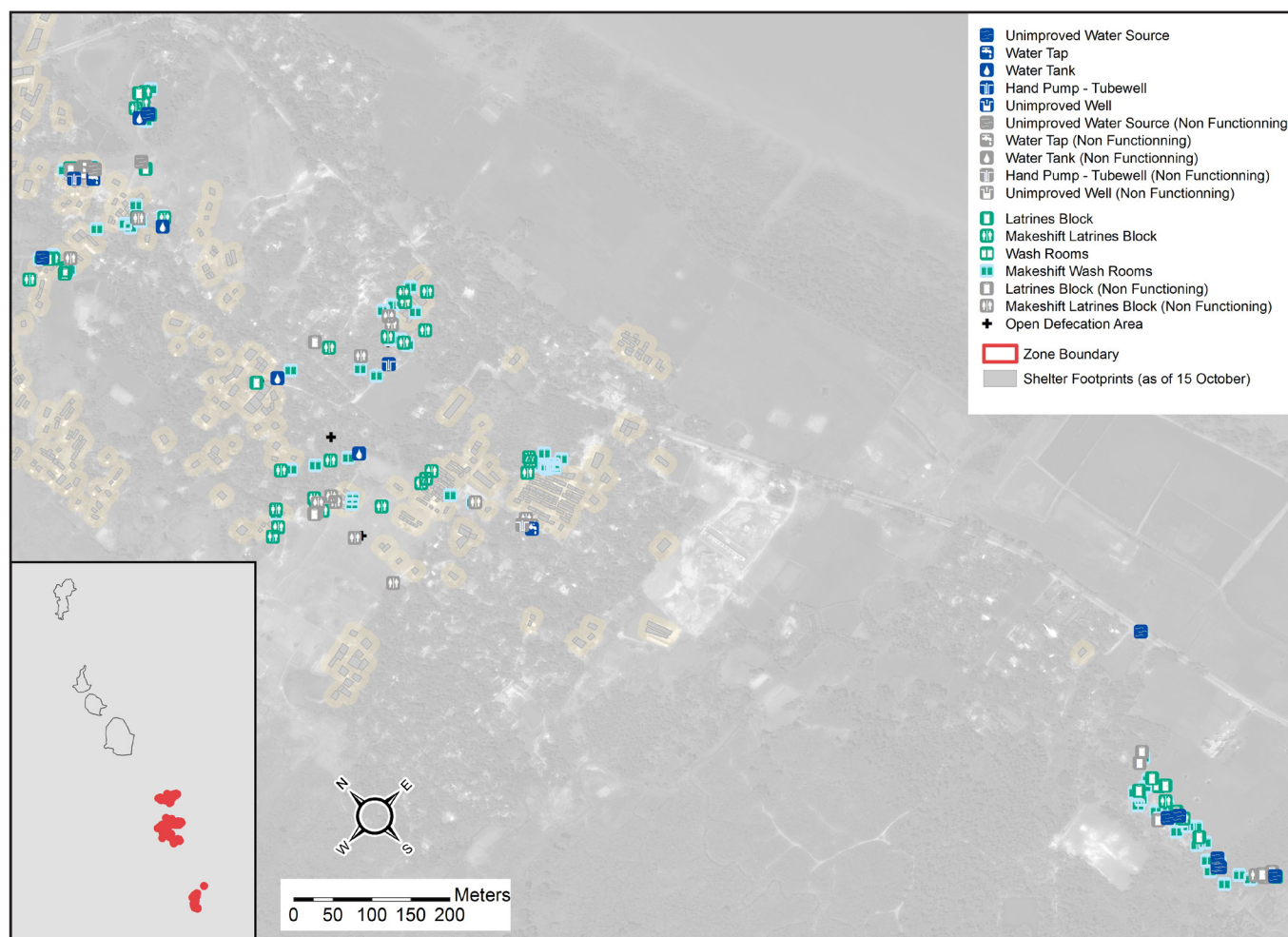


This profile provides an overview of WASH infrastructure within British Para in Teknaf, Cox's Bazar. Primary data represents infrastructure present up to 18 October 2017. Findings should be considered indicative only.

# of individuals:	885	# of latrines:	87	# of handpumps, % of functional	
# of shelters:	595	% of safe latrines ¹ :	49%	handpumps:	3* (67%)
# of individuals per shelter:	1	% of functional latrines:	64%	# of bathing facilities:	71

Site Map

Coordinates: 20.946657, 92.258402



Key WASH findings

Targets based on WASH Sector Standards/Indicators for Rohingya response, Sphere Minimum Standards/Indicators as well as DPHE Minimum Standards/Indicators. *Minimum standard/indicator reached, *More than 75% minimum standard/indicator reached, *More than 50% minimum standard/indicator reached, *Less than 50% of minimum standard/indicator reached

	Target	Current Round	Achievement
# of people per functioning hand pump	max. 500 ²	442	●
% of shelters within 200 meters of a functioning hand pump ³	100%	36%	●
# of people per functional (non-full) latrine	max. 50 ⁴	16	●
# of people per safe latrine	N/A	21	N/A
% of shelters within 50 meters to a functional (non-full) latrine	100%	35%	●
% of latrines that are at least 10 meters away from a water point	100%	90%	●

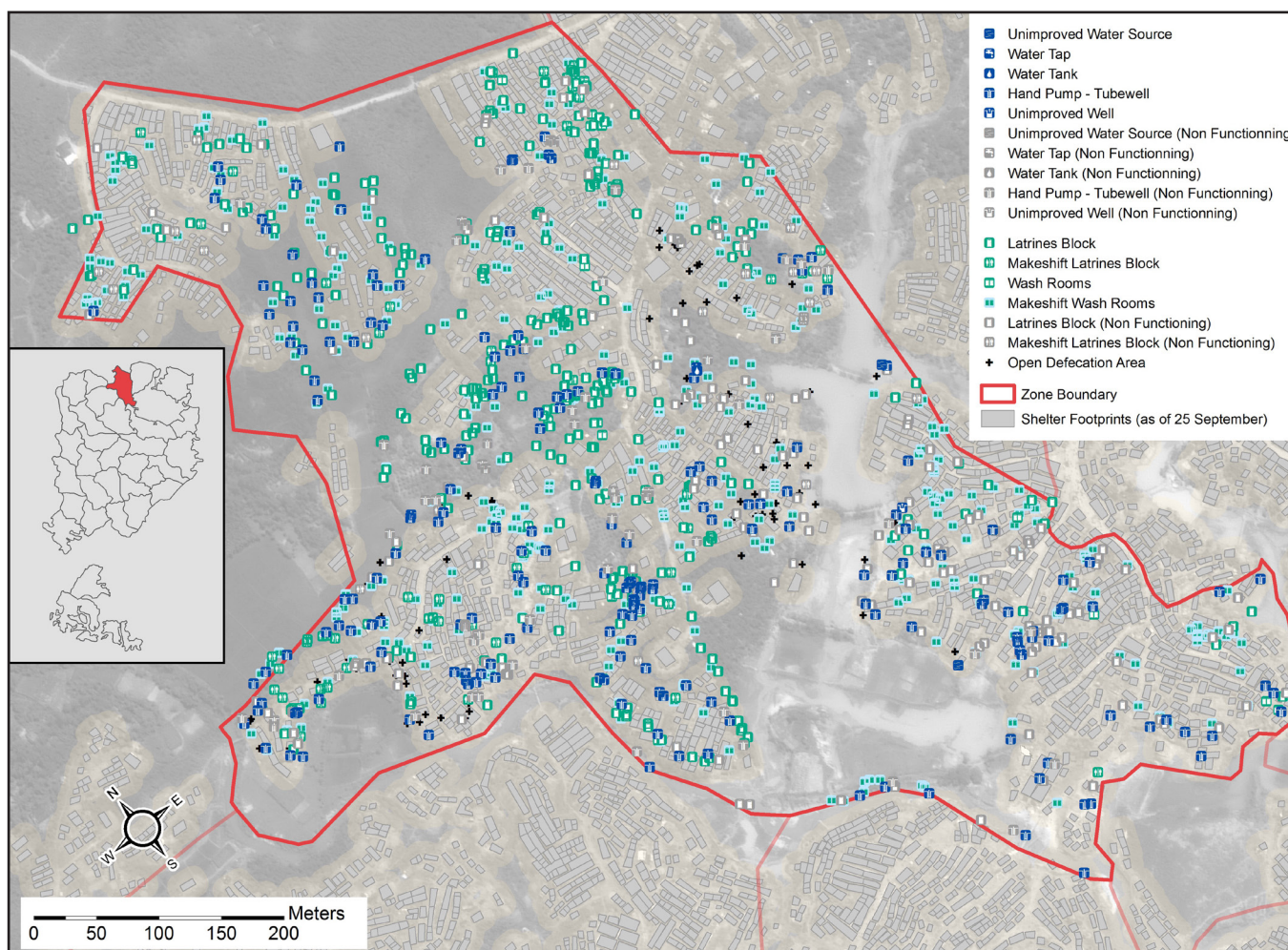
*The low number of handpumps in this location could be due to the fact that there are other types of water sources here (4 water tanks identified), and also because this is a new and small settlement. ¹ Safe refers to fully covered latrines (i.e. a latrine with four walls, a roof and a door) ² This target is based on standards for the long term (6 months+), for the immediate and medium phase (0-6 months) it is 500. ³ The distance is based on standards for the long term (6 months+), for the immediate phase (0-3 months) it is 750 meters and for the medium phase (3-6 months) 500 meters. ⁴ This target is based on standards for the long term (6 months+), for the immediate phase (0-3 months) it is 100 and for the medium phase (3-6 months) 75.

This profile provides an overview of WASH infrastructure within Zone BB in Ukhiya, Cox's Bazar. Primary data represents infrastructure present up to 18 October 2017. Findings should be considered indicative only.

# of individuals:	20,334	# of latrines:	954	# of handpumps, % of functional	
# of shelters:	889	% of safe latrines ¹ :	84%	handpumps:	262 (77%)
# of individuals per shelter:	23	% of functional latrines:	69%	# of bathing facilities:	415

Site Map

Coordinates: 21.211703, 92.152853



Key WASH findings

Targets based on WASH Sector Standards/Indicators for Rohingya response, Sphere Minimum Standards/Indicators as well as DPHE Minimum Standards/Indicators. *Minimum standard/indicator reached, *More than 75% minimum standard/indicator reached, *More than 50% minimum standard/indicator reached, *Less than 50% of minimum standard/indicator reached

	Target	Current Round	Achievement
# of people per functioning hand pump	max. 500 ²	100	●
% of shelters within 200 meters of a functioning hand pump ³	100%	100%	●
# of people per functional (non-full) latrine	max. 50 ⁴	31	●
# of people per safe latrine	N/A	25	N/A
% of shelters within 50 meters to a functional (non-full) latrine	100%	86%	●
% of latrines that are at least 10 meters away from a water point	100%	62%	●

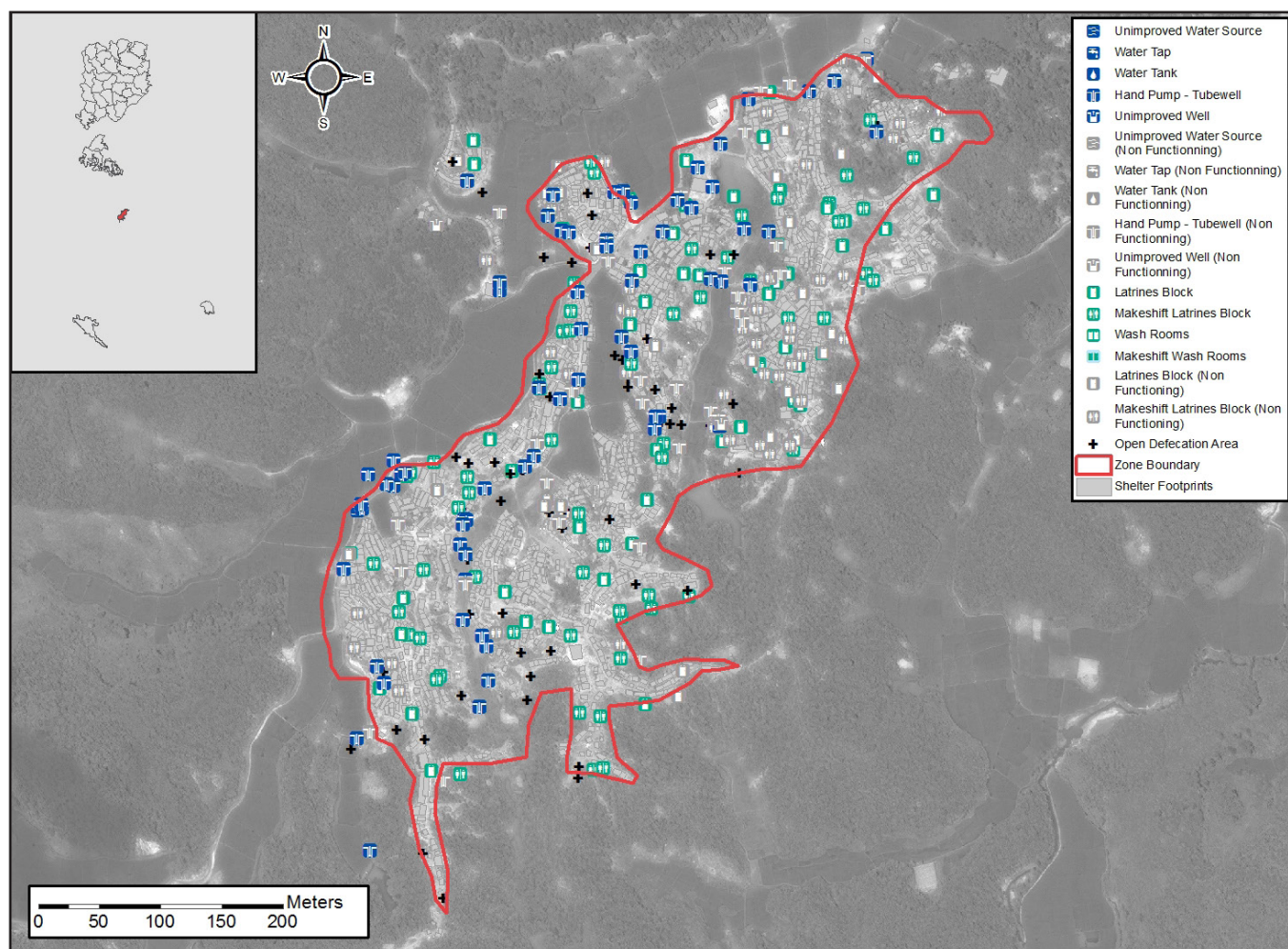
¹ Safe refers to fully covered latrines (i.e. a latrine with four walls, a roof and a door) ² This target is based on standards for the long term (6 months+), for the immediate and medium phase (0-6 months) it is 500. ³ The distance is based on standards for the long term (6 months+), for the immediate phase (0-3 months) it is 750 meters and for the medium phase (3-6 months) 500 meters. ⁴ This target is based on standards for the long term (6 months+), for the immediate phase (0-3 months) it is 100 and for the medium phase (3-6 months) 75.

This profile provides an overview of WASH infrastructure within Chakmarkul in Teknaf, Cox's Bazar. Primary data represents infrastructure present up to 18 October 2017. Findings should be considered indicative only.

# of individuals:	10,500	# of latrines:	207	# of handpumps, % of functional	
# of shelters:	1471	% of safe latrines ¹ :	71%	handpumps:	98 (68%)
# of individuals per shelter:	7	% of functional latrines:	63%	# of bathing facilities:	333

Site Map

Coordinates: 21.134734, 92.157370



Key WASH findings

Targets based on WASH Sector Standards/Indicators for Rohingya response, Sphere Minimum Standards/Indicators as well as DPHE Minimum Standards/Indicators. *Minimum standard/indicator reached, *More than 75% minimum standard/indicator reached, *More than 50% minimum standard/indicator reached, *Less than 50% of minimum standard/indicator reached

	Target	Current Round	Achievement
# of people per functioning hand pump	max. 500 ²	157	●
% of shelters within 200 meters of a functioning hand pump ³	100%	100%	●
# of people per functional (non-full) latrine	max. 50 ⁴	80	●
# of people per safe latrine	N/A	72	N/A
% of shelters within 50 meters to a functional (non-full) latrine	100%	99%	●
% of latrines that are at least 10 meters away from a water point	100%	83%	●

¹ Safe refers to fully covered latrines (i.e. a latrine with four walls, a roof and a door) ² This target is based on standards for the long term (6 months+), for the immediate and medium phase (0-6 months) it is 500. ³ The distance is based on standards for the long term (6 months+), for the immediate phase (0-3 months) it is 750 meters and for the medium phase (3-6 months) 500 meters. ⁴ This target is based on standards for the long term (6 months+), for the immediate phase (0-3 months) it is 100 and for the medium phase (3-6 months) 75.

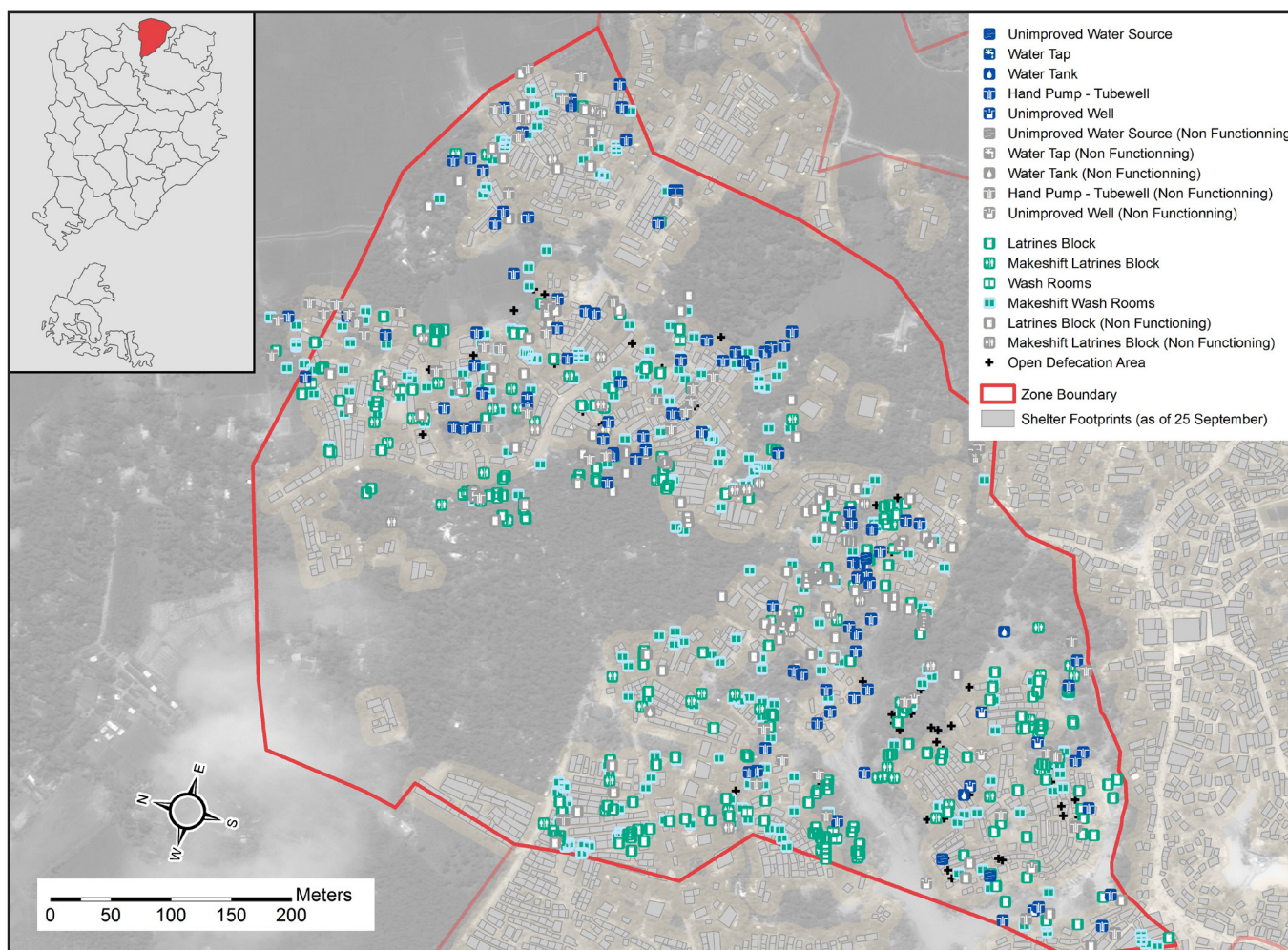


This profile provides an overview of WASH infrastructure within Zone CC in Ukhiya, Cox's Bazar. Primary data represents infrastructure present up to 18 October 2017. Findings should be considered indicative only.

# of individuals:	15,709	# of latrines:	655	# of handpumps, % of functional	
# of shelters:	1143	% of safe latrines ¹ :	62%	handpumps:	151 (63%)
# of individuals per shelter:	14	% of functional latrines:	66%	# of bathing facilities:	303

Site Map

Coordinates: 21.213943, 92.156997



Key WASH findings

Targets based on WASH Sector Standards/Indicators for Rohingya response, Sphere Minimum Standards/Indicators as well as DPHE Minimum Standards/Indicators. *Minimum standard/indicator reached, *More than 75% minimum standard/indicator reached, *More than 50% minimum standard/indicator reached, *Less than 50% of minimum standard/indicator reached

	Target	Current Round	Achievement
# of people per functioning hand pump	max. 500 ²	165	●
% of shelters within 200 meters of a functioning hand pump ³	100%	98%	●
# of people per functional (non-full) latrine	max. 50 ⁴	36	●
# of people per safe latrine	N/A	39	N/A
% of shelters within 50 meters to a functional (non-full) latrine	100%	94%	●
% of latrines that are at least 10 meters away from a water point	100%	76%	●

¹ Safe refers to fully covered latrines (i.e. a latrine with four walls, a roof and a door) ² This target is based on standards for the long term (6 months+), for the immediate and medium phase (0-6 months) it is 500. ³ The distance is based on standards for the long term (6 months+), for the immediate phase (0-3 months) it is 750 meters and for the medium phase (3-6 months) 500 meters. ⁴ This target is based on standards for the long term (6 months+), for the immediate phase (0-3 months) it is 100 and for the medium phase (3-6 months) 75.

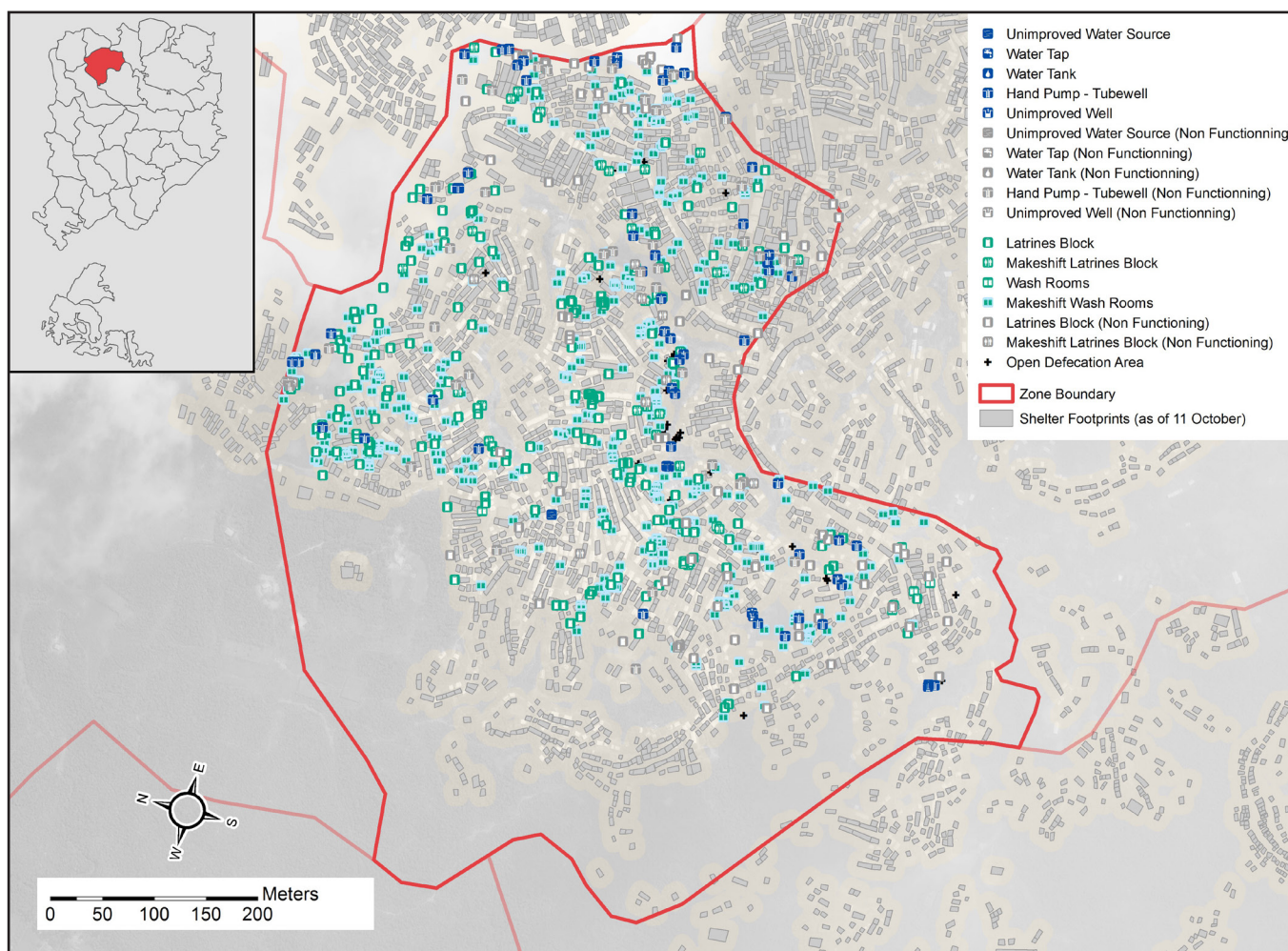


This profile provides an overview of WASH infrastructure within Zone DD in Ukhiya, Cox's Bazar. Primary data represents infrastructure present up to 18 October 2017. Findings should be considered indicative only.

# of individuals:	20,020	# of latrines:	767	# of handpumps, % of functional	
# of shelters:	1855	% of safe latrines ¹ :	84%	handpumps:	99 (62%)
# of individuals per shelter:	11	% of functional latrines:	74%	# of bathing facilities:	455

Site Map

Coordinates: 21.208792, 92.147926



Key WASH findings

Targets based on WASH Sector Standards/Indicators for Rohingya response, Sphere Minimum Standards/Indicators as well as DPHE Minimum Standards/Indicators. *Minimum standard/indicator reached, *More than 75% minimum standard/indicator reached, *More than 50% minimum standard/indicator reached, *Less than 50% of minimum standard/indicator reached

	Target	Current Round	Achievement
# of people per functioning hand pump	max. 500 ²	328	●
% of shelters within 200 meters of a functioning hand pump ³	100%	100%	●
# of people per functional (non-full) latrine	max. 50 ⁴	35	●
# of people per safe latrine	N/A	31	N/A
% of shelters within 50 meters to a functional (non-full) latrine	100%	98%	●
% of latrines that are at least 10 meters away from a water point	100%	74%	●

¹ Safe refers to fully covered latrines (i.e. a latrine with four walls, a roof and a door) ² This target is based on standards for the long term (6 months+), for the immediate and medium phase (0-6 months) it is 500. ³ The distance is based on standards for the long term (6 months+), for the immediate phase (0-3 months) it is 750 meters and for the medium phase (3-6 months) 500 meters. ⁴ This target is based on standards for the long term (6 months+), for the immediate phase (0-3 months) it is 100 and for the medium phase (3-6 months) 75.

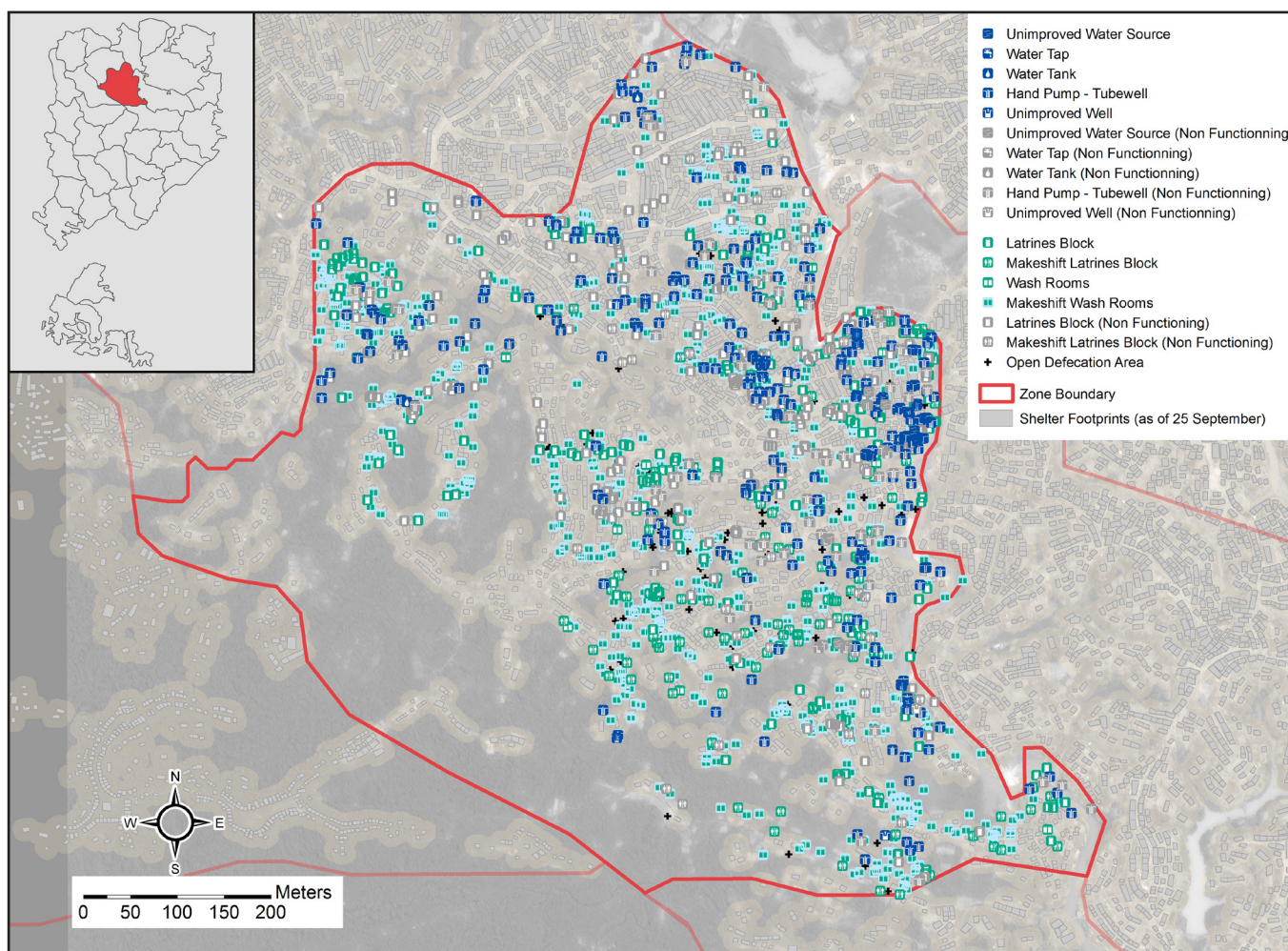


This profile provides an overview of WASH infrastructure within Zone EE in Ukhiya, Cox's Bazar. Primary data represents infrastructure present up to 18 October 2017. Findings should be considered indicative only.

# of individuals:	14,755	# of latrines:	1033	# of handpumps, % of functional	
# of shelters:	2274	% of safe latrines ¹ :	70%	handpumps:	343 (78%)
# of individuals per shelter:	6	% of functional latrines:	52%	# of bathing facilities:	779

Site Map

Coordinates: 21.204536, 92.151509



Key WASH findings

Targets based on WASH Sector Standards/Indicators for Rohingya response, Sphere Minimum Standards/Indicators as well as DPHE Minimum Standards/Indicators. *Minimum standard/indicator reached, *More than 75% minimum standard/indicator reached, *More than 50% minimum standard/indicator reached, *Less than 50% of minimum standard/indicator reached

	Target	Current Round	Achievement
# of people per functioning hand pump	max. 500 ²	55	●
% of shelters within 200 meters of a functioning hand pump ³	100%	100%	●
# of people per functional (non-full) latrine	max. 50 ⁴	27	●
# of people per safe latrine	N/A	20	N/A
% of shelters within 50 meters to a functional (non-full) latrine	100%	86%	●
% of latrines that are at least 10 meters away from a water point	100%	63%	●

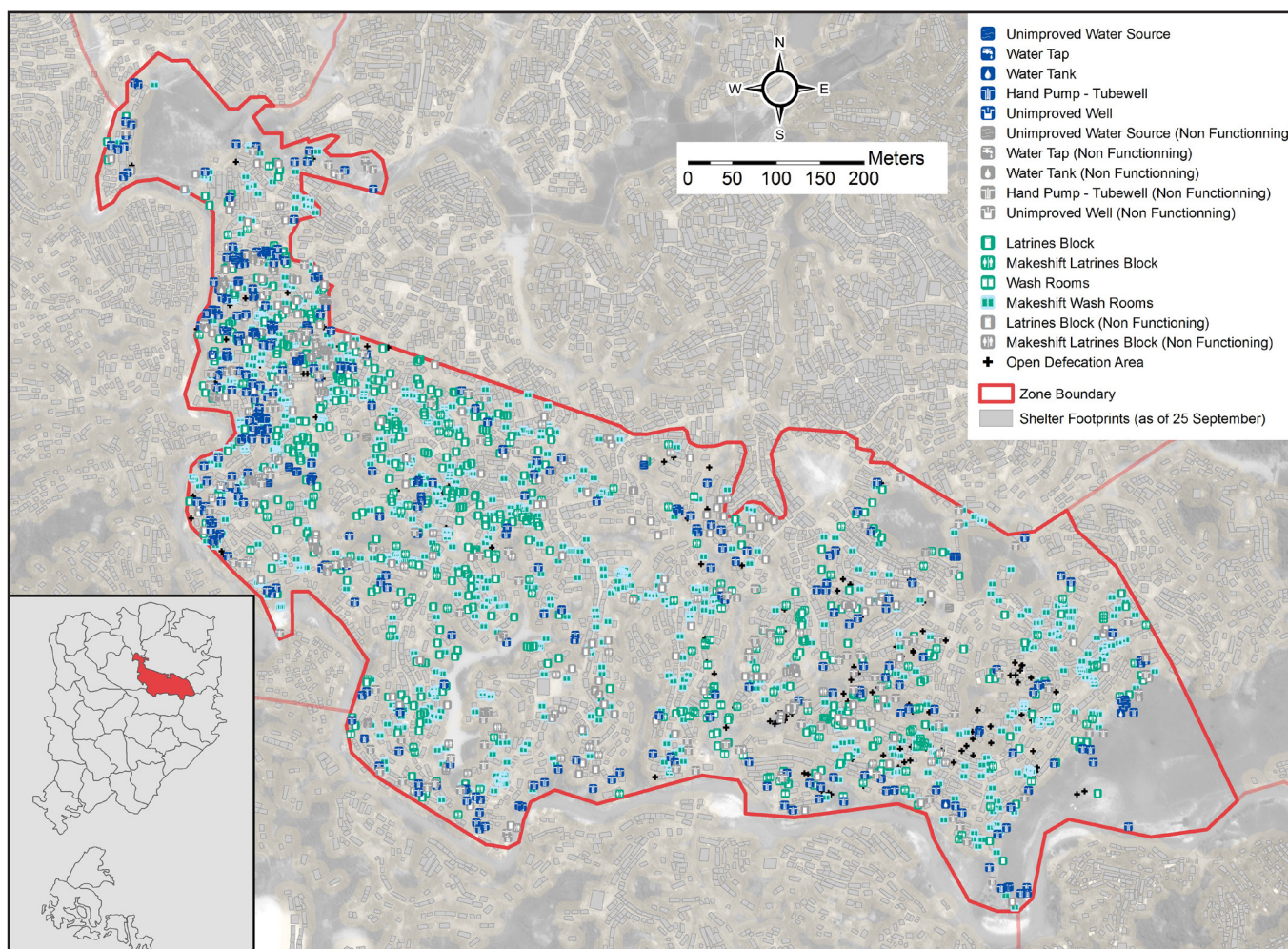
¹ Safe refers to fully covered latrines (i.e. a latrine with four walls, a roof and a door) ² This target is based on standards for the long term (6 months+), for the immediate and medium phase (0-6 months) it is 500. ³ The distance is based on standards for the long term (6 months+), for the immediate phase (0-3 months) it is 750 meters and for the medium phase (3-6 months) 500 meters. ⁴ This target is based on standards for the long term (6 months+), for the immediate phase (0-3 months) it is 100 and for the medium phase (3-6 months) 75.

This profile provides an overview of WASH infrastructure within Zone FF in Ukhiya, Cox's Bazar. Primary data represents infrastructure present up to 18 October 2017. Findings should be considered indicative only.

# of individuals:	11,233	# of latrines:	960	# of handpumps, % of functional	
# of shelters:	2779	% of safe latrines ¹ :	65%	handpumps:	466 (67%)
# of individuals per shelter:	4	% of functional latrines:	67%	# of bathing facilities:	920

Site Map

Coordinates: 21.202408, 92.158788



Key WASH findings

Targets based on WASH Sector Standards/Indicators for Rohingya response, Sphere Minimum Standards/Indicators as well as DPHE Minimum Standards/Indicators. *Minimum standard/indicator reached, *More than 75% minimum standard/indicator reached, *More than 50% minimum standard/indicator reached, *Less than 50% of minimum standard/indicator reached

	Target	Current Round	Achievement
# of people per functioning hand pump	max. 500 ²	36	●
% of shelters within 200 meters of a functioning hand pump ³	100%	100%	●
# of people per functional (non-full) latrine	max. 50 ⁴	17	●
# of people per safe latrine	N/A	18	N/A
% of shelters within 50 meters to a functional (non-full) latrine	100%	99%	●
% of latrines that are at least 10 meters away from a water point	100%	59%	●

¹ Safe refers to fully covered latrines (i.e. a latrine with four walls, a roof and a door) ² This target is based on standards for the long term (6 months+), for the immediate and medium phase (0-6 months) it is 500. ³ The distance is based on standards for the long term (6 months+), for the immediate phase (0-3 months) it is 750 meters and for the medium phase (3-6 months) 500 meters. ⁴ This target is based on standards for the long term (6 months+), for the immediate phase (0-3 months) it is 100 and for the medium phase (3-6 months) 75.

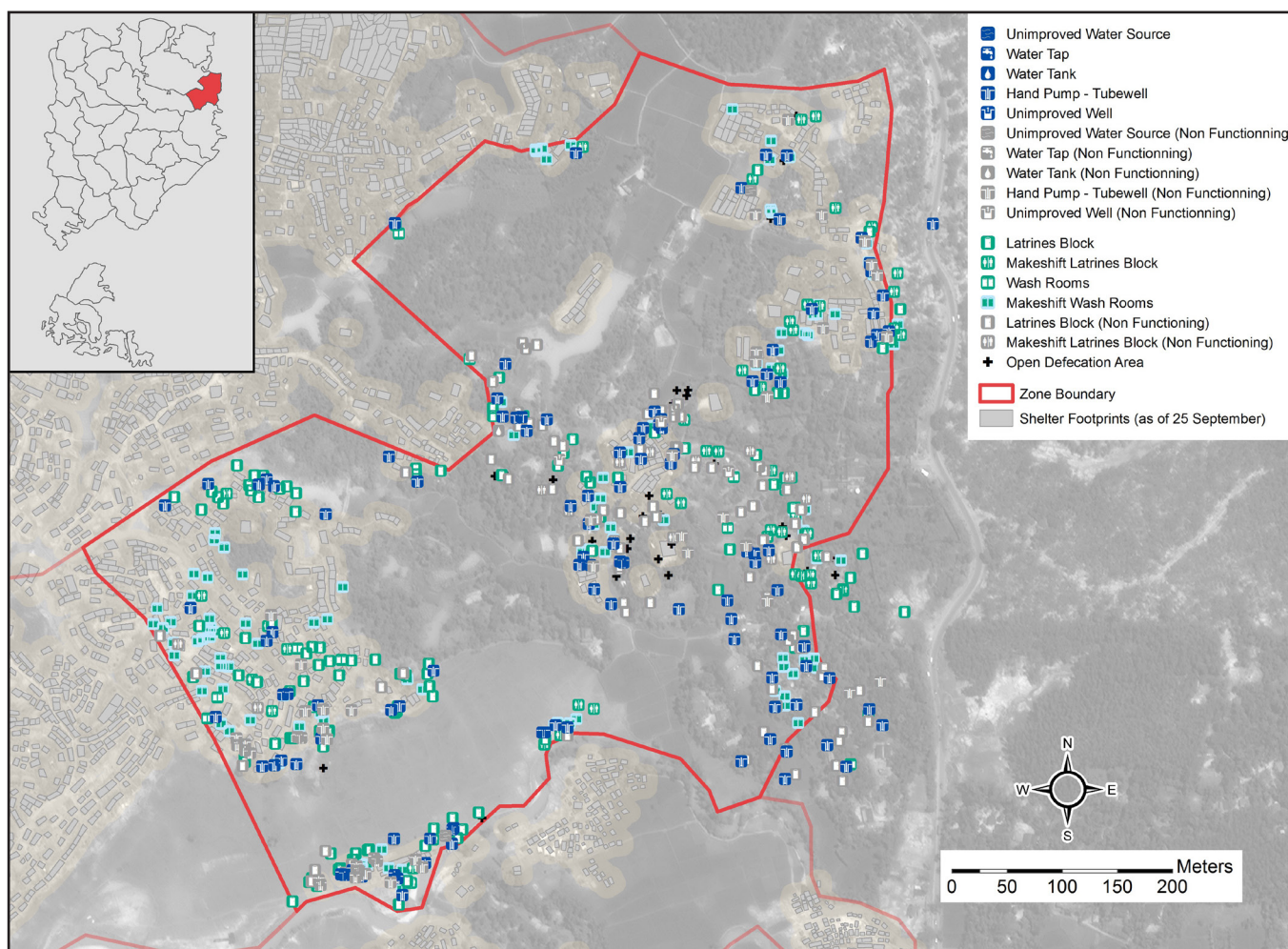


This profile provides an overview of WASH infrastructure within Zone GG in Ukhiya, Cox's Bazar. Primary data represents infrastructure present up to 18 October 2017. Findings should be considered indicative only.

# of individuals:	4,675	# of latrines:	458	# of handpumps, % of functional	
# of shelters:	523	% of safe latrines ¹ :	75%	handpumps:	159 (71%)
# of individuals per shelter:	9	% of functional latrines:	65%	# of bathing facilities:	134

Site Map

Coordinates: 21.204312, 92.168307



Key WASH findings

Targets based on WASH Sector Standards/Indicators for Rohingya response, Sphere Minimum Standards/Indicators as well as DPHE Minimum Standards/Indicators. *Minimum standard/indicator reached, *More than 75% minimum standard/indicator reached, *More than 50% minimum standard/indicator reached, *Less than 50% of minimum standard/indicator reached

	Target	Current Round	Achievement
# of people per functioning hand pump	max. 500 ²	41	●
% of shelters within 200 meters of a functioning hand pump ³	100%	100%	●
# of people per functional (non-full) latrine	max. 50 ⁴	16	●
# of people per safe latrine	N/A	14	N/A
% of shelters within 50 meters to a functional (non-full) latrine	100%	92%	●
% of latrines that are at least 10 meters away from a water point	100%	62%	●

¹ Safe refers to fully covered latrines (i.e. a latrine with four walls, a roof and a door) ² This target is based on standards for the long term (6 months+), for the immediate and medium phase (0-6 months) it is 500. ³ The distance is based on standards for the long term (6 months+), for the immediate phase (0-3 months) it is 750 meters and for the medium phase (3-6 months) 500 meters. ⁴ This target is based on standards for the long term (6 months+), for the immediate phase (0-3 months) it is 100 and for the medium phase (3-6 months) 75.

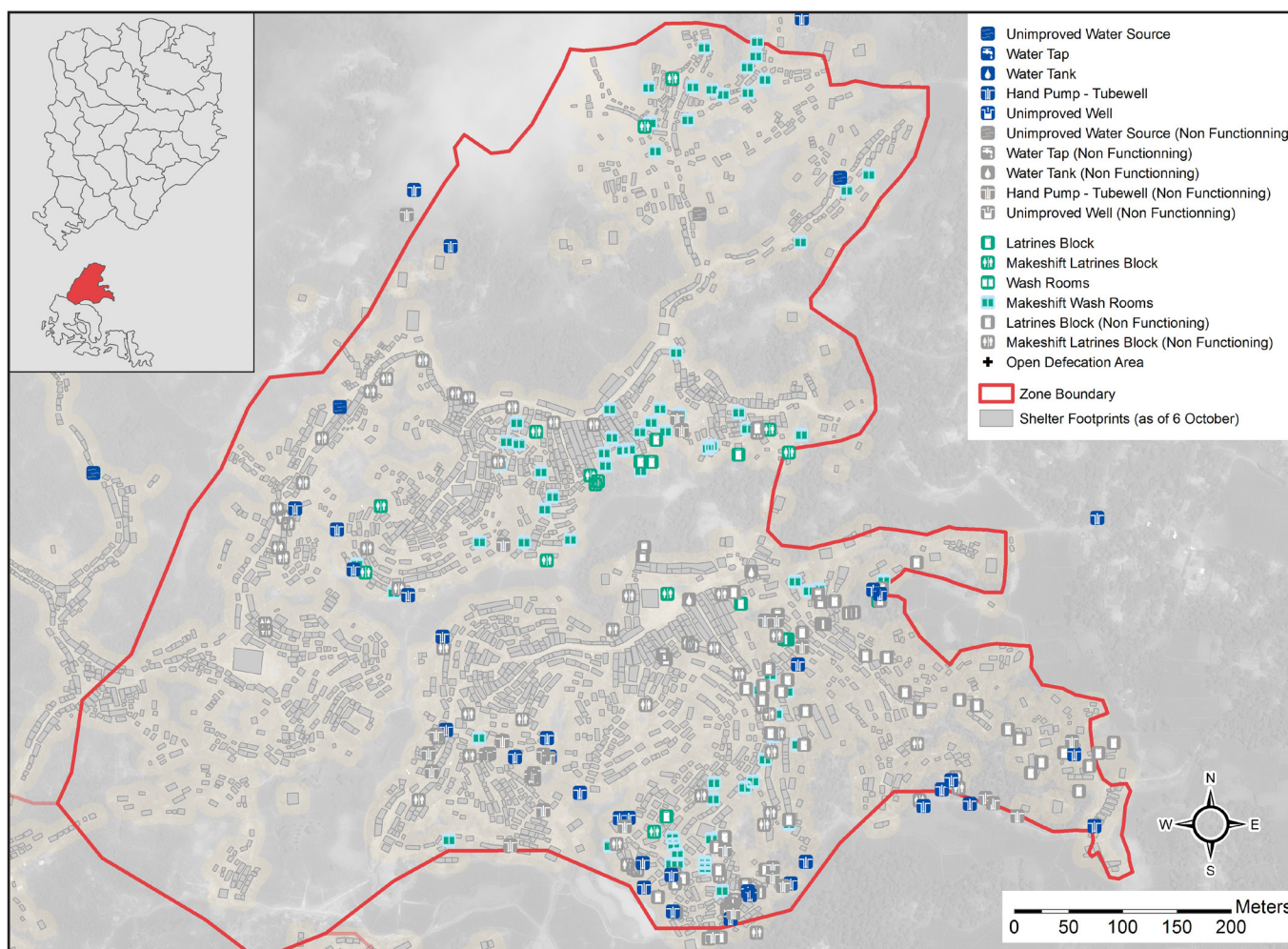


This profile provides an overview of WASH infrastructure within Hakimpara in Ukhiya, Cox's Bazar. Primary data represents infrastructure present up to 18 October 2017. Findings should be considered indicative only.

# of individuals:	54,550	# of latrines:	216	# of handpumps, % of functional	
# of shelters:	1675	% of safe latrines ¹ :	40%	handpumps:	64 (53%)
# of individuals per shelter:	33	% of functional latrines:	90%	# of bathing facilities:	114

Site Map

Coordinates: 21.156046, 92.152741



Key WASH findings

Targets based on WASH Sector Standards/Indicators for Rohingya response, Sphere Minimum Standards/Indicators as well as DPHE Minimum Standards/Indicators. *Minimum standard/indicator reached, *More than 75% minimum standard/indicator reached, *More than 50% minimum standard/indicator reached, *Less than 50% of minimum standard/indicator reached

	Target	Current Round	Achievement
# of people per functioning hand pump	max. 500 ²	1,604	●
% of shelters within 200 meters of a functioning hand pump ³	100%	100%	●
# of people per functional (non-full) latrine	max. 50 ⁴	280	●
# of people per safe latrine	N/A	634	N/A
% of shelters within 50 meters to a functional (non-full) latrine	100%	39%	●
% of latrines that are at least 10 meters away from a water point	100%	83%	●

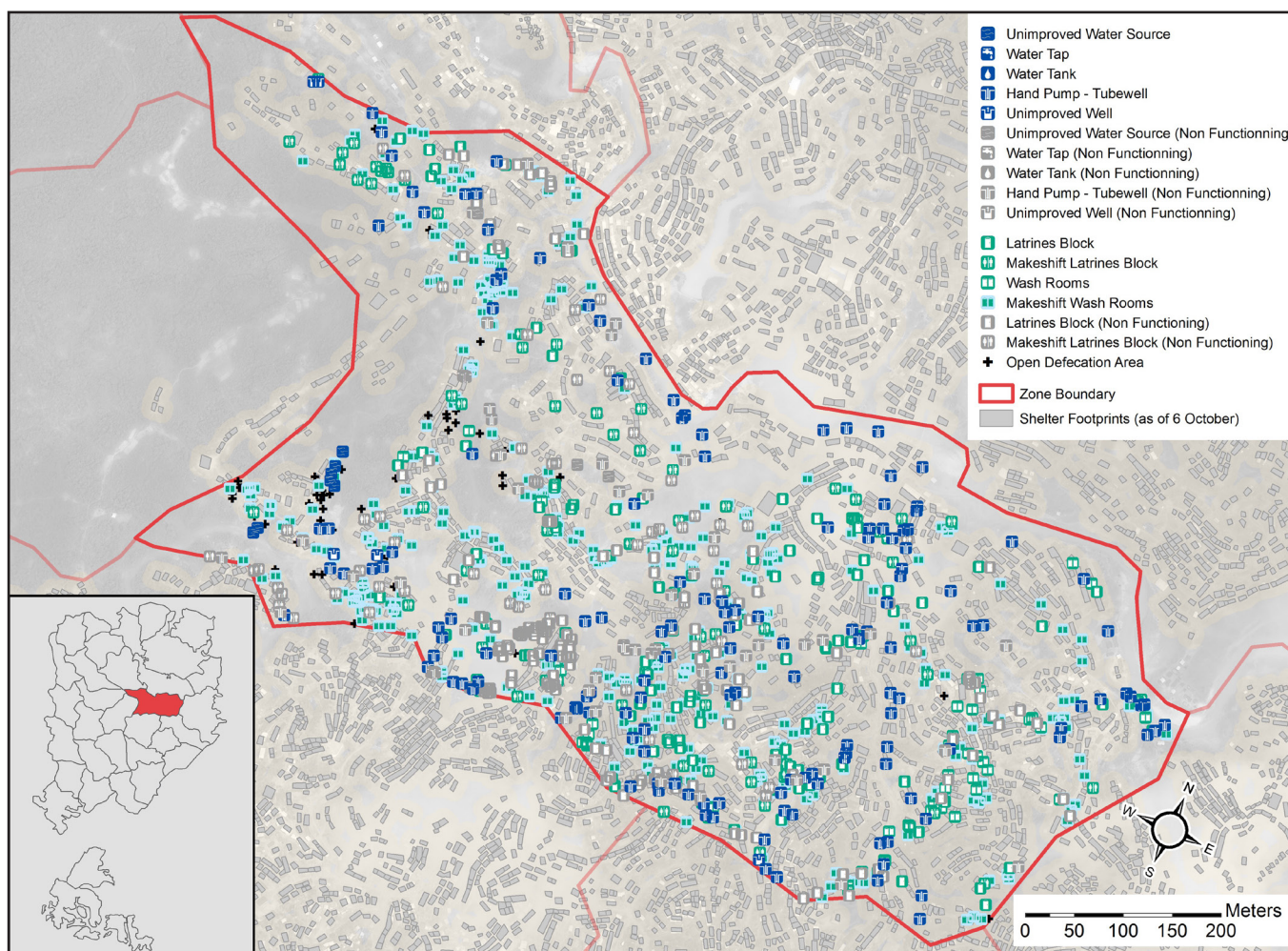
¹ Safe refers to fully covered latrines (i.e. a latrine with four walls, a roof and a door) ² This target is based on standards for the long term (6 months+), for the immediate and medium phase (0-6 months) it is 500. ³ The distance is based on standards for the long term (6 months+), for the immediate phase (0-3 months) it is 750 meters and for the medium phase (3-6 months) 500 meters. ⁴ This target is based on standards for the long term (6 months+), for the immediate phase (0-3 months) it is 100 and for the medium phase (3-6 months) 75.

This profile provides an overview of WASH infrastructure within Zone HH in Ukhiya, Cox's Bazar. Primary data represents infrastructure present up to 18 October 2017. Findings should be considered indicative only.

# of individuals:	27,500	# of latrines:	475	# of handpumps, % of functional	
# of shelters:	1835	% of safe latrines ¹ :	65%	handpumps:	203 (75%)
# of individuals per shelter:	15	% of functional latrines:	49%	# of bathing facilities:	551

Site Map

Coordinates: 21.198041, 92.160132



Key WASH findings

Targets based on WASH Sector Standards/Indicators for Rohingya response, Sphere Minimum Standards/Indicators as well as DPHE Minimum Standards/Indicators. *Minimum standard/indicator reached, *More than 75% minimum standard/indicator reached, *More than 50% minimum standard/indicator reached, *Less than 50% of minimum standard/indicator reached

	Target	Current Round	Achievement
# of people per functioning hand pump	max. 500 ²	181	●
% of shelters within 200 meters of a functioning hand pump ³	100%	100%	●
# of people per functional (non-full) latrine	max. 50 ⁴	118	●
# of people per safe latrine	N/A	89	N/A
% of shelters within 50 meters to a functional (non-full) latrine	100%	88%	●
% of latrines that are at least 10 meters away from a water point	100%	78%	●

¹ Safe refers to fully covered latrines (i.e. a latrine with four walls, a roof and a door) ² This target is based on standards for the long term (6 months+), for the immediate and medium phase (0-6 months) it is 500. ³ The distance is based on standards for the long term (6 months+), for the immediate phase (0-3 months) it is 750 meters and for the medium phase (3-6 months) 500 meters. ⁴ This target is based on standards for the long term (6 months+), for the immediate phase (0-3 months) it is 100 and for the medium phase (3-6 months) 75.

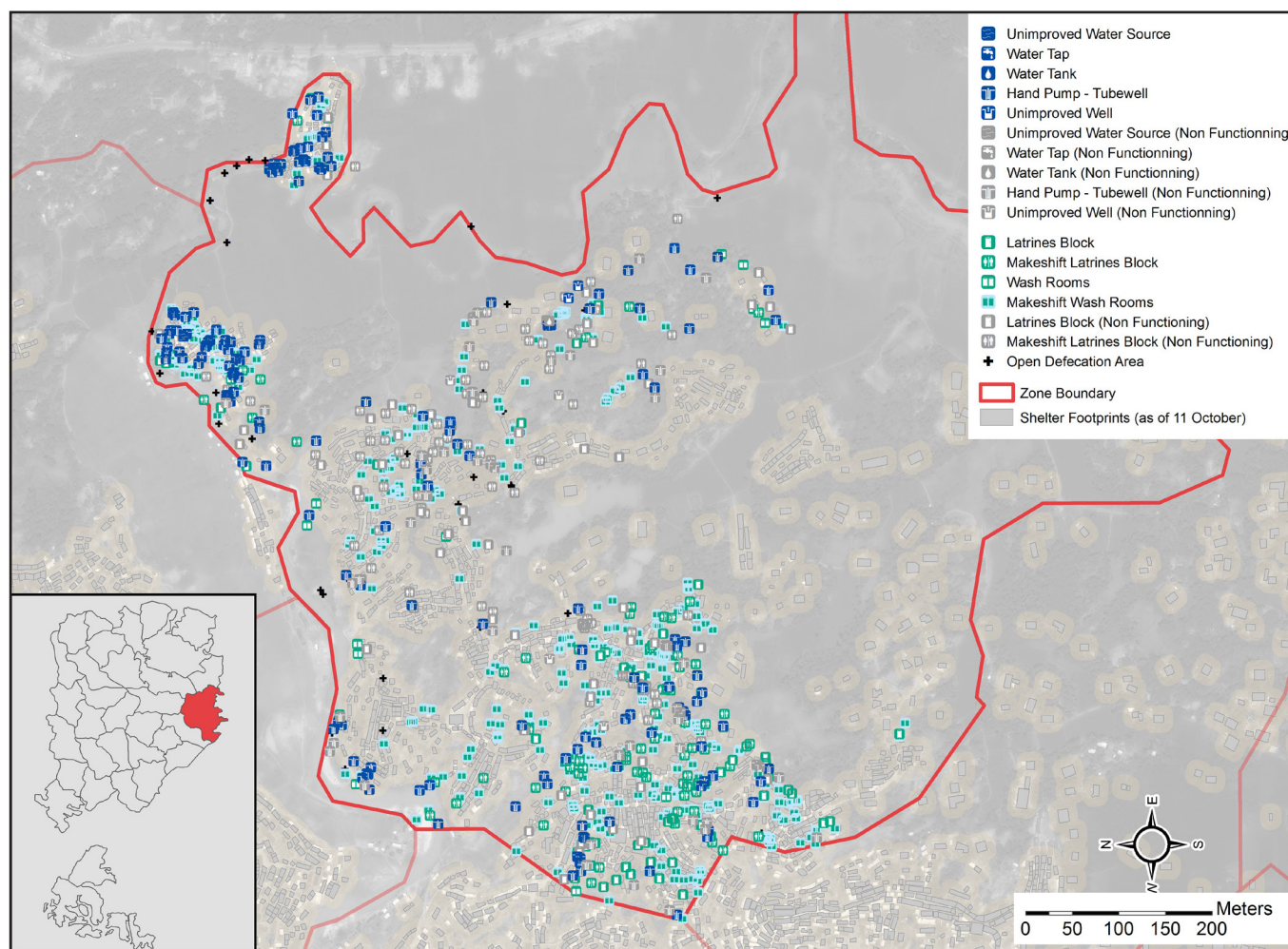


This profile provides an overview of WASH infrastructure within Zone II in Ukhiya, Cox's Bazar. Primary data represents infrastructure present up to 18 October 2017. Findings should be considered indicative only.

# of individuals:	10,380	# of latrines:	316	# of handpumps, % of functional	
# of shelters:	1565	% of safe latrines ¹ :	49%	handpumps:	208 (77%)
# of individuals per shelter:	7	% of functional latrines:	50%	# of bathing facilities:	416

Site Map

Coordinates: 21.196473, 92.166180



Key WASH findings

Targets based on WASH Sector Standards/Indicators for Rohingya response, Sphere Minimum Standards/Indicators as well as DPHE Minimum Standards/Indicators. *Minimum standard/indicator reached, *More than 75% minimum standard/indicator reached, *More than 50% minimum standard/indicator reached, *Less than 50% of minimum standard/indicator reached

	Target	Current Round	Achievement
# of people per functioning hand pump	max. 500 ²	65	●
% of shelters within 200 meters of a functioning hand pump ³	100%	98%	●
# of people per functional (non-full) latrine	max. 50 ⁴	66	●
# of people per safe latrine	N/A	67	N/A
% of shelters within 50 meters to a functional (non-full) latrine	100%	69%	●
% of latrines that are at least 10 meters away from a water point	100%	67%	●

¹ Safe refers to fully covered latrines (i.e. a latrine with four walls, a roof and a door) ² This target is based on standards for the long term (6 months+), for the immediate and medium phase (0-6 months) it is 500. ³ The distance is based on standards for the long term (6 months+), for the immediate phase (0-3 months) it is 750 meters and for the medium phase (3-6 months) 500 meters. ⁴ This target is based on standards for the long term (6 months+), for the immediate phase (0-3 months) it is 100 and for the medium phase (3-6 months) 75.

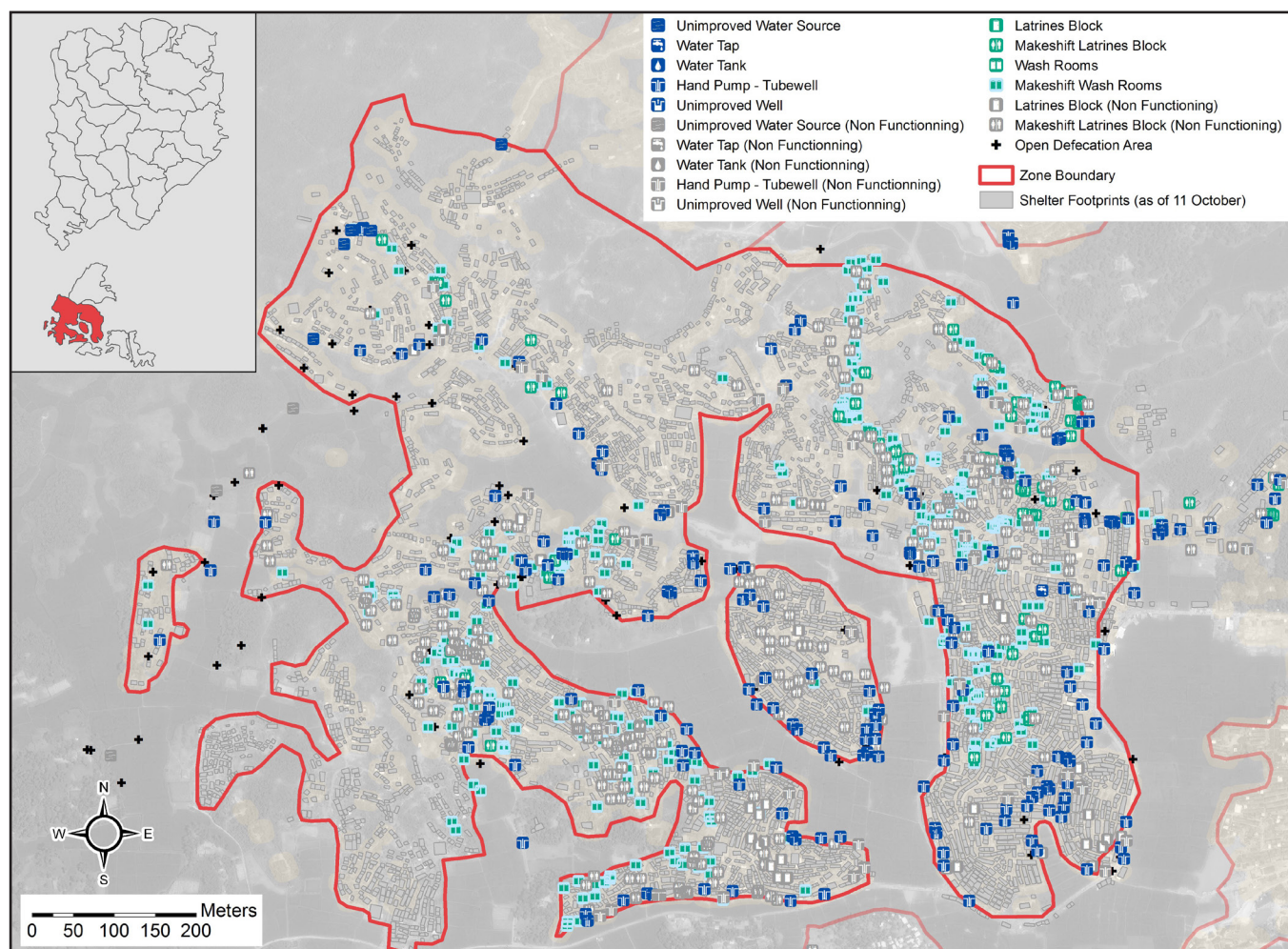


This profile provides an overview of WASH infrastructure within Jamtoli in Ukhiya, Cox's Bazar. Primary data represents infrastructure present up to 18 October 2017. Findings should be considered indicative only.

# of individuals:	30,375	# of latrines:	495	# of handpumps, % of functional	
# of shelters:	3016	% of safe latrines ¹ :	15%	handpumps:	242 (80%)
# of individuals per shelter:	10	% of functional latrines:	85%	# of bathing facilities:	442

Site Map

Coordinates: 21.158286, 92.144006



Key WASH findings

Targets based on WASH Sector Standards/Indicators for Rohingya response, Sphere Minimum Standards/Indicators as well as DPHE Minimum Standards/Indicators. *Minimum standard/indicator reached, *More than 75% minimum standard/indicator reached, *More than 50% minimum standard/indicator reached, *Less than 50% of minimum standard/indicator reached

	Target	Current Round	Achievement
# of people per functioning hand pump	max. 500 ²	157	●
% of shelters within 200 meters of a functioning hand pump ³	100%	100%	●
# of people per functional (non-full) latrine	max. 50 ⁴	72	●
# of people per safe latrine	N/A	405	N/A
% of shelters within 50 meters to a functional (non-full) latrine	100%	36%	●
% of latrines that are at least 10 meters away from a water point	100%	72%	●

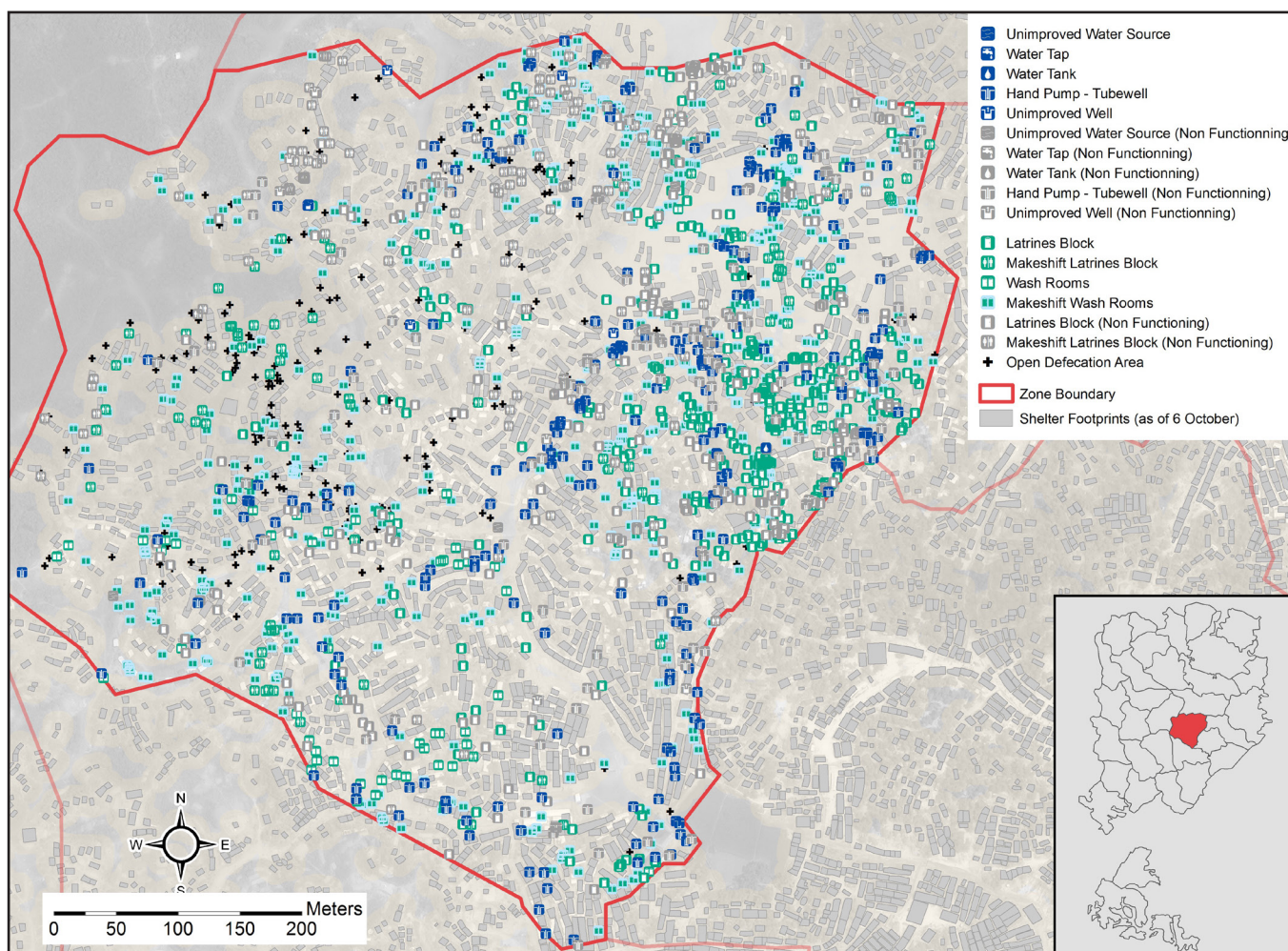
¹ Safe refers to fully covered latrines (i.e. a latrine with four walls, a roof and a door) ² This target is based on standards for the long term (6 months+), for the immediate and medium phase (0-6 months) it is 500. ³ The distance is based on standards for the long term (6 months+), for the immediate phase (0-3 months) it is 750 meters and for the medium phase (3-6 months) 500 meters. ⁴ This target is based on standards for the long term (6 months+), for the immediate phase (0-3 months) it is 100 and for the medium phase (3-6 months) 75.

This profile provides an overview of WASH infrastructure within Zone JJ in Ukhiya, Cox's Bazar. Primary data represents infrastructure present up to 18 October 2017. Findings should be considered indicative only.

# of individuals:	15,750	# of latrines:	959	# of handpumps, % of functional	
# of shelters:	2214	% of safe latrines ¹ :	66%	handpumps:	383 (68%)
# of individuals per shelter:	7	% of functional latrines:	58%	# of bathing facilities:	747

Site Map

Coordinates: 21.193562, 92.155093



Key WASH findings

Targets based on WASH Sector Standards/Indicators for Rohingya response, Sphere Minimum Standards/Indicators as well as DPHE Minimum Standards/Indicators. *Minimum standard/indicator reached, *More than 75% minimum standard/indicator reached, *More than 50% minimum standard/indicator reached, *Less than 50% of minimum standard/indicator reached

	Target	Current Round	Achievement
# of people per functioning hand pump	max. 500 ²	61	●
% of shelters within 200 meters of a functioning hand pump ³	100%	100%	●
# of people per functional (non-full) latrine	max. 50 ⁴	28	●
# of people per safe latrine	N/A	25	N/A
% of shelters within 50 meters to a functional (non-full) latrine	100%	94%	●
% of latrines that are at least 10 meters away from a water point	100%	72%	●

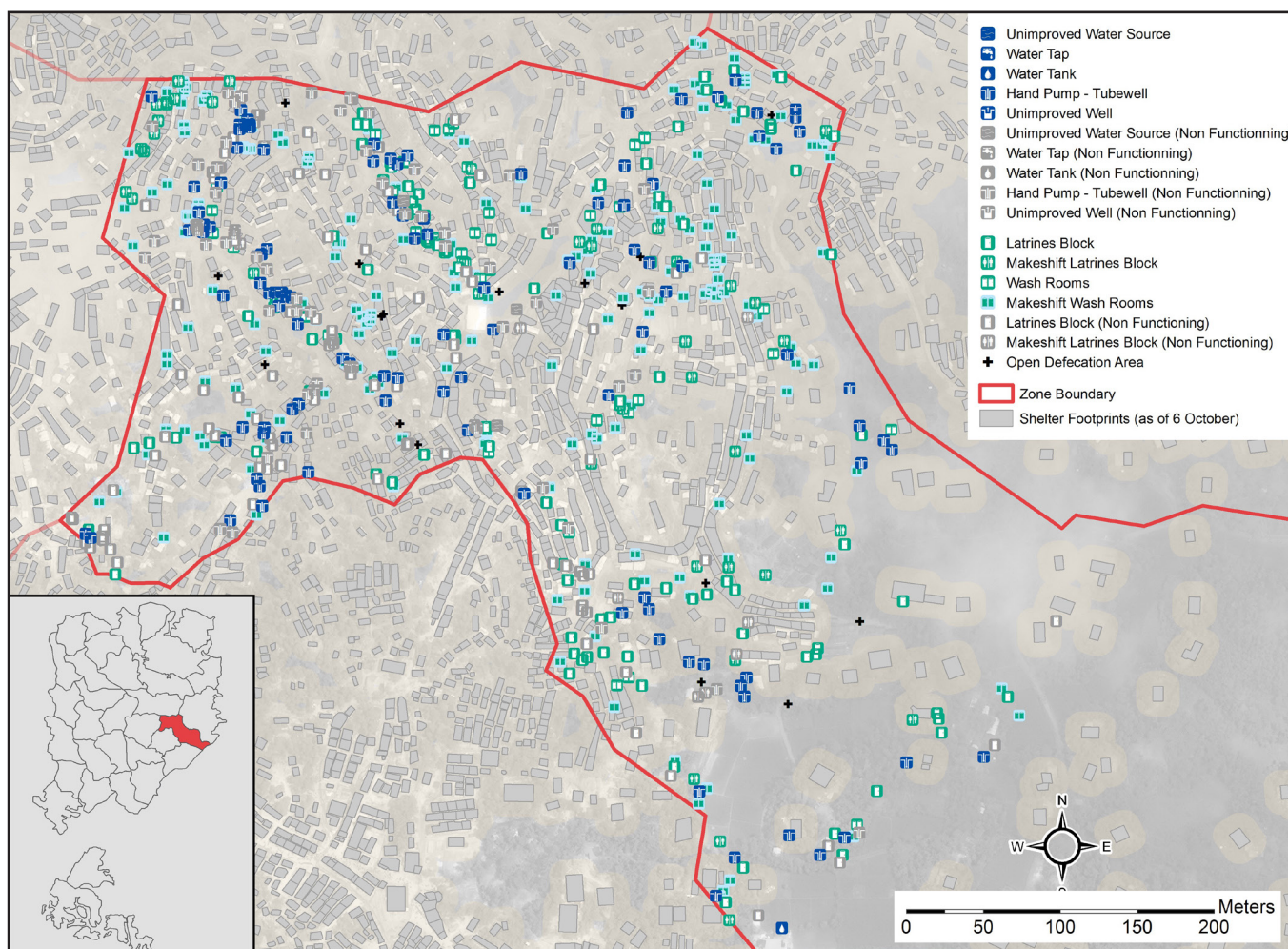
¹ Safe refers to fully covered latrines (i.e. a latrine with four walls, a roof and a door) ² This target is based on standards for the long term (6 months+), for the immediate and medium phase (0-6 months) it is 500. ³ The distance is based on standards for the long term (6 months+), for the immediate phase (0-3 months) it is 750 meters and for the medium phase (3-6 months) 500 meters. ⁴ This target is based on standards for the long term (6 months+), for the immediate phase (0-3 months) it is 100 and for the medium phase (3-6 months) 75.

This profile provides an overview of WASH infrastructure within Zone KK in Ukhiya, Cox's Bazar. Primary data represents infrastructure present up to 18 October 2017. Findings should be considered indicative only.

# of individuals:	11,100	# of latrines:	383	# of handpumps, % of functional	
# of shelters:	1143	% of safe latrines ¹ :	81%	handpumps:	186 (67%)
# of individuals per shelter:	10	% of functional latrines:	67%	# of bathing facilities:	322

Site Map

Coordinates: 21.192554, 92.163044



Key WASH findings

Targets based on WASH Sector Standards/Indicators for Rohingya response, Sphere Minimum Standards/Indicators as well as DPHE Minimum Standards/Indicators. • Minimum standard/indicator reached, • More than 75% minimum standard/indicator reached, • More than 50% minimum standard/indicator reached, • Less than 50% of minimum standard/indicator reached

	Target	Current Round	Achievement
# of people per functioning hand pump	max. 500 ²	90	●
% of shelters within 200 meters of a functioning hand pump ³	100%	100%	●
# of people per functional (non-full) latrine	max. 50 ⁴	43	●
# of people per safe latrine	N/A	36	N/A
% of shelters within 50 meters to a functional (non-full) latrine	100%	94%	●
% of latrines that are at least 10 meters away from a water point	100%	63%	●

¹ Safe refers to fully covered latrines (i.e. a latrine with four walls, a roof and a door) ² This target is based on standards for the long term (6 months+), for the immediate and medium phase (0-6 months) it is 500. ³ The distance is based on standards for the long term (6 months+), for the immediate phase (0-3 months) it is 750 meters and for the medium phase (3-6 months) 500 meters. ⁴ This target is based on standards for the long term (6 months +), for the immediate phase (0-3 months) it is 100 and for the medium phase (3-6 months) 75.

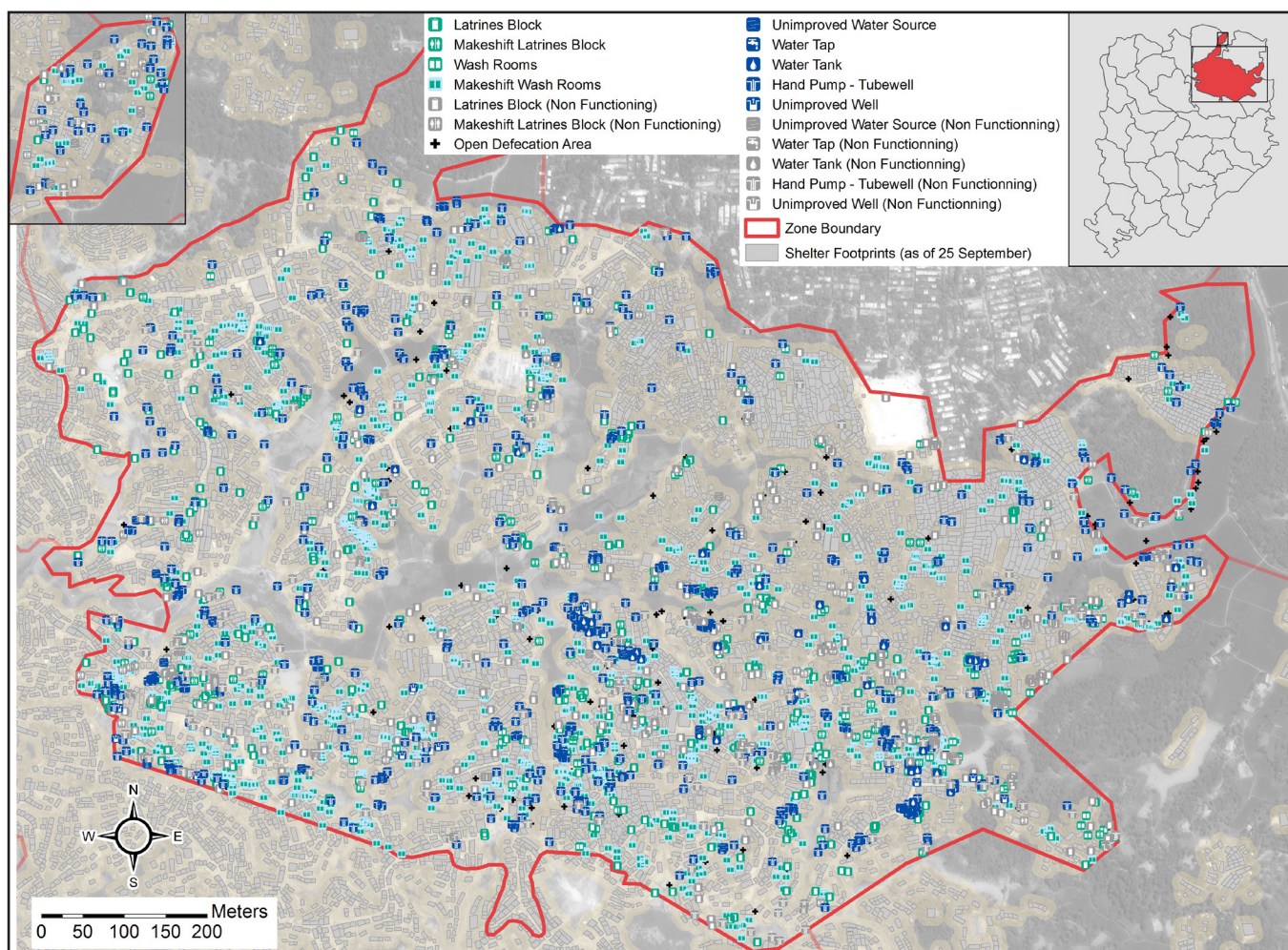


This profile provides an overview of WASH infrastructure within Kutupalong MS in Ukhiya, Cox's Bazar. Primary data represents infrastructure present up to 18 October 2017. Findings should be considered indicative only.

# of individuals:	113,688	# of latrines:	2058	# of handpumps, % of functional	
# of shelters:	6444	% of safe latrines ¹ :	72%	handpumps:	753 (76%)
# of individuals per shelter:	18	% of functional latrines:	58%	# of bathing facilities:	1397

Site Map

Coordinates: 21.207672, 92.160916



Key WASH findings

Targets based on WASH Sector Standards/Indicators for Rohingya response, Sphere Minimum Standards/Indicators as well as DPHE Minimum Standards/Indicators. *Minimum standard/indicator reached, *More than 75% minimum standard/indicator reached, *More than 50% minimum standard/indicator reached, *Less than 50% of minimum standard/indicator reached

	Target	Current Round	Achievement
# of people per functioning hand pump	max. 500 ²	197	●
% of shelters within 200 meters of a functioning hand pump ³	100%	100%	●
# of people per functional (non-full) latrine	max. 50 ⁴	95	●
# of people per safe latrine	N/A	76	N/A
% of shelters within 50 meters to a functional (non-full) latrine	100%	84%	●
% of latrines that are at least 10 meters away from a water point	100%	67%	●

¹ Safe refers to fully covered latrines (i.e. a latrine with four walls, a roof and a door) ² This target is based on standards for the long term (6 months+), for the immediate and medium phase (0-6 months) it is 500. ³ The distance is based on standards for the long term (6 months+), for the immediate phase (0-3 months) it is 750 meters and for the medium phase (3-6 months) 500 meters. ⁴ This target is based on standards for the long term (6 months+), for the immediate phase (0-3 months) it is 100 and for the medium phase (3-6 months) 75.

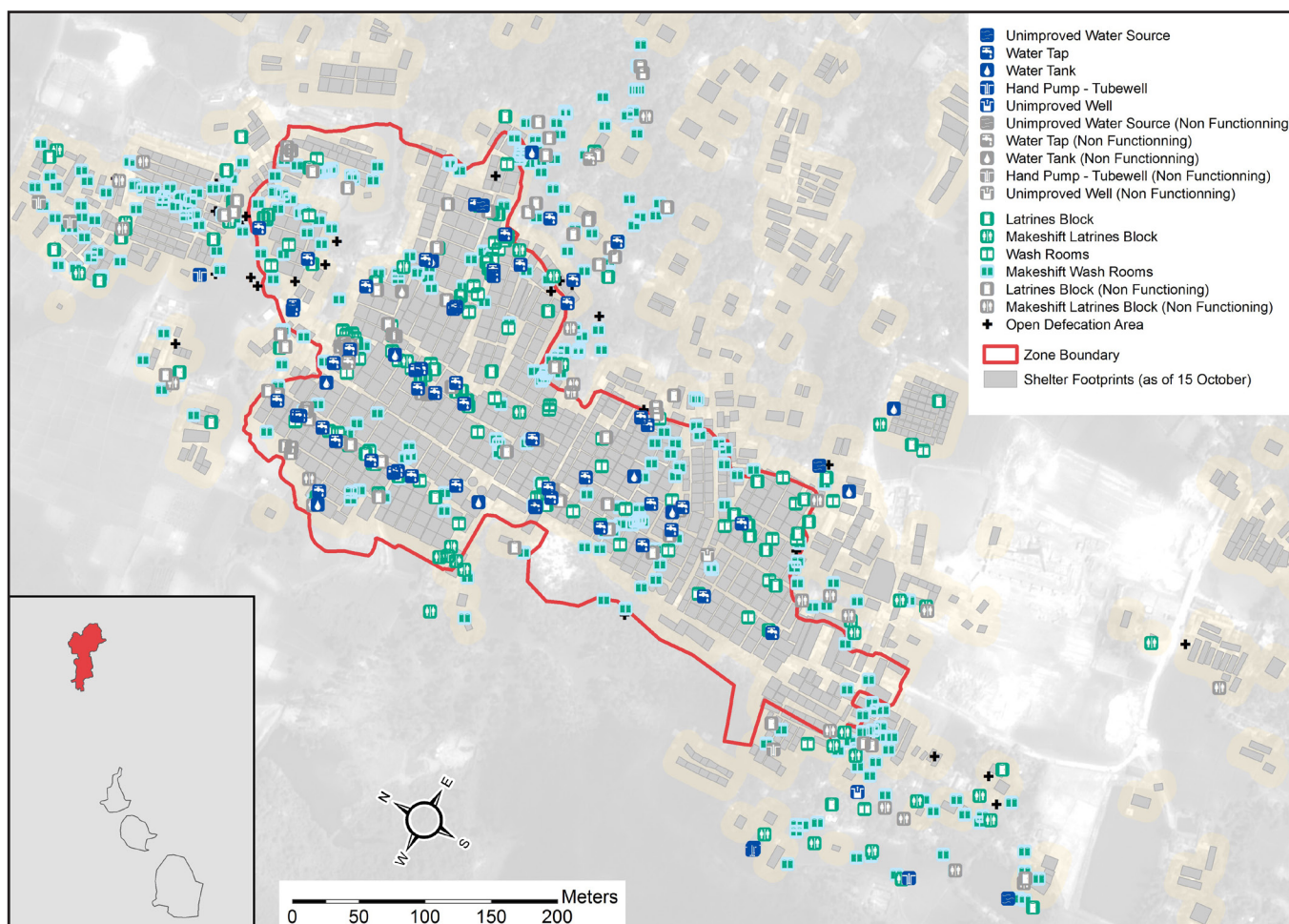


This profile provides an overview of WASH infrastructure within Leda in Teknaf, Cox's Bazar. Primary data represents infrastructure present up to 18 October 2017. Findings should be considered indicative only.

# of individuals:	22,130	# of latrines:	586	# of handpumps, % of functional	
# of shelters:	1589	% of safe latrines ¹ :	85%	handpumps:	7* (57%)
# of individuals per shelter:	14	% of functional latrines:	54%	# of bathing facilities:	469

Site Map

Coordinates: 20.973952, 92.245213



Key WASH findings

Targets based on WASH Sector Standards/Indicators for Rohingya response, Sphere Minimum Standards/Indicators as well as DPHE Minimum Standards/Indicators. *Minimum standard/indicator reached, *More than 75% minimum standard/indicator reached, *More than 50% minimum standard/indicator reached, *Less than 50% of minimum standard/indicator reached

	Target	Current Round	Achievement
# of people per functioning hand pump	max. 500 ²	5,532	●
% of shelters within 200 meters of a functioning hand pump ³	100%	37%	●
# of people per functional (non-full) latrine	max. 50 ⁴	70	●
# of people per safe latrine	N/A	45	N/A
% of shelters within 50 meters to a functional (non-full) latrine	100%	65%	●
% of latrines that are at least 10 meters away from a water point	100%	76%	●

* The low number of handpumps in this area could be due to the presence of other sources of water (12 water tanks identified).

¹ Safe refers to fully covered latrines (i.e. a latrine with four walls, a roof and a door) ² This target is based on standards for the long term (6 months+), for the immediate and medium phase (0-6 months) it is 500. ³ The distance is based on standards for the long term (6 months+), for the immediate phase (0-3 months) it is 750 meters and for the medium phase (3-6 months) 500 meters.

⁴ This target is based on standards for the long term (6 months +), for the immediate phase (0-3 months) it is 100 and for the medium phase (3-6 months) 75.

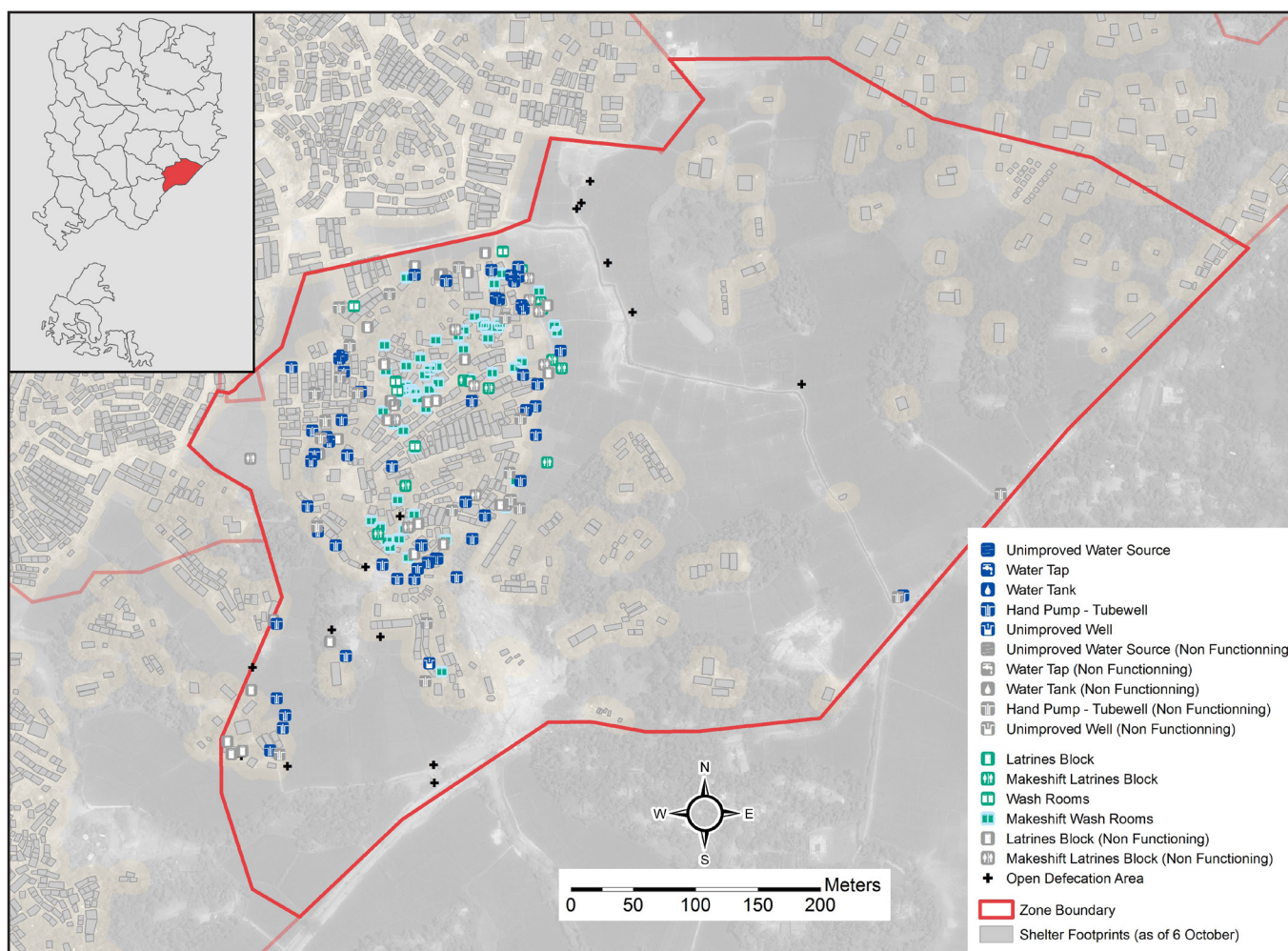


This profile provides an overview of WASH infrastructure within Zone LL in Ukhiya, Cox's Bazar. Primary data represents infrastructure present up to 18 October 2017. Findings should be considered indicative only.

# of individuals:	1,247	# of latrines:	116	# of handpumps, % of functional	
# of shelters:	627	% of safe latrines ¹ :	83%	handpumps:	98 (71%)
# of individuals per shelter:	2	% of functional latrines:	13%	# of bathing facilities:	100

Site Map

Coordinates: 21.188186, 92.162372



Key WASH findings

Targets based on WASH Sector Standards/Indicators for Rohingya response, Sphere Minimum Standards/Indicators as well as DPHE Minimum Standards/Indicators. *Minimum standard/indicator reached, *More than 75% minimum standard/indicator reached, *More than 50% minimum standard/indicator reached, *Less than 50% of minimum standard/indicator reached

	Target	Current Round	Achievement
# of people per functioning hand pump	max. 500 ²	18	●
% of shelters within 200 meters of a functioning hand pump ³	100%	91%	●
# of people per functional (non-full) latrine	max. 50 ⁴	83	●
# of people per safe latrine	N/A	13	N/A
% of shelters within 50 meters to a functional (non-full) latrine	100%	45%	●
% of latrines that are at least 10 meters away from a water point	100%	69%	●

¹ Safe refers to fully covered latrines (i.e. a latrine with four walls, a roof and a door) ² This target is based on standards for the long term (6 months+), for the immediate and medium phase (0-6 months) it is 500. ³ The distance is based on standards for the long term (6 months+), for the immediate phase (0-3 months) it is 750 meters and for the medium phase (3-6 months) 500 meters. ⁴ This target is based on standards for the long term (6 months+), for the immediate phase (0-3 months) it is 100 and for the medium phase (3-6 months) 75.

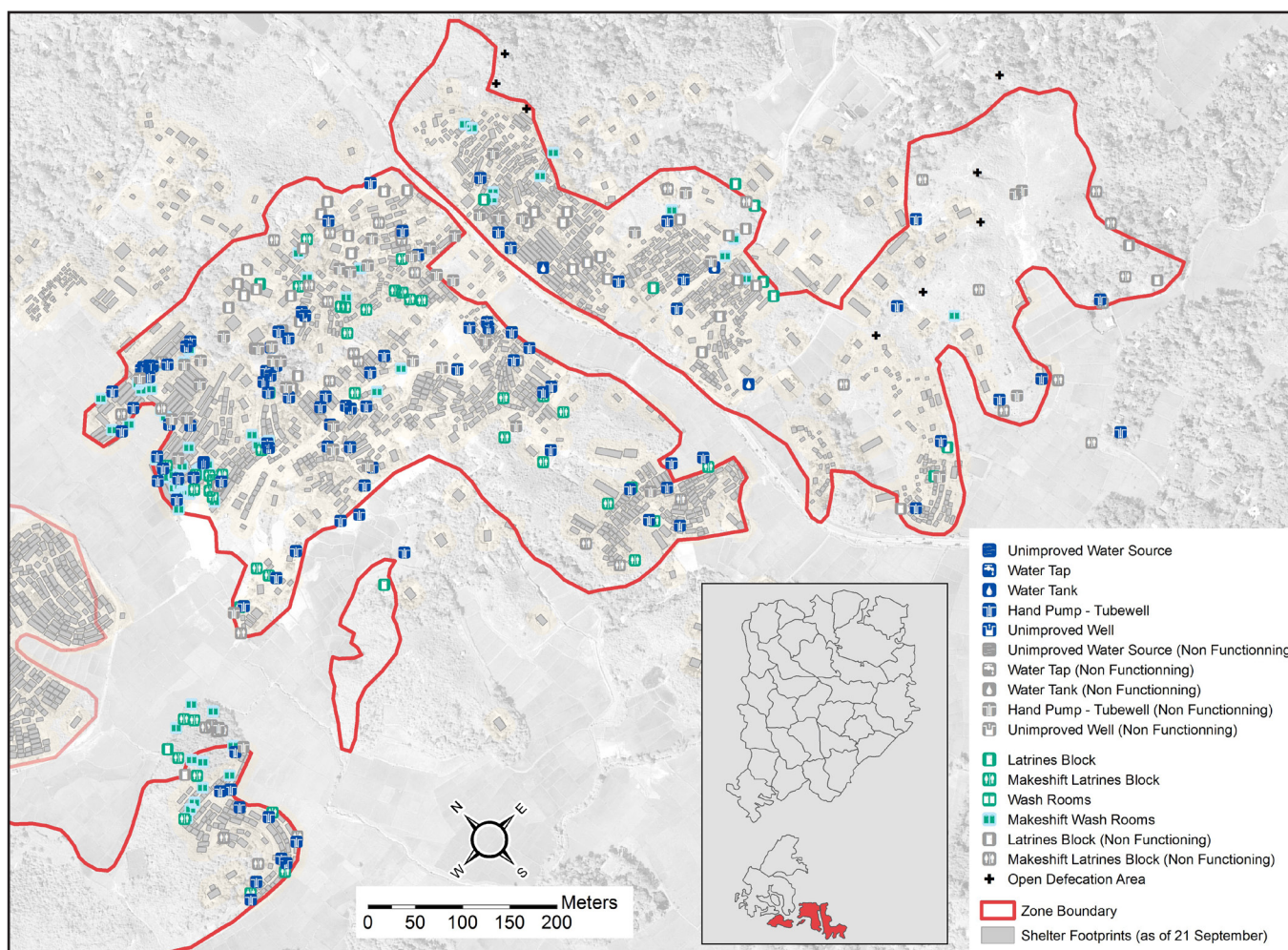


This profile provides an overview of WASH infrastructure within Moynarghona in Ukhiya, Cox's Bazar. Primary data represents infrastructure present up to 18 October 2017. Findings should be considered indicative only.

# of individuals:	21,347	# of latrines:	201	# of handpumps, % of functional handpumps:	143 (69%)
# of shelters:	1739	% of safe latrines ¹ :	47%		
# of individuals per shelter:	12	% of functional latrines:	91%	# of bathing facilities:	82

Site Map

Coordinates: 21.156046, 92.152741



Key WASH findings

Targets based on WASH Sector Standards/Indicators for Rohingya response, Sphere Minimum Standards/Indicators as well as DPHE Minimum Standards/Indicators. *Minimum standard/indicator reached, *More than 75% minimum standard/indicator reached, *More than 50% minimum standard/indicator reached, *Less than 50% of minimum standard/indicator reached

	Target	Current Round	Achievement
# of people per functioning hand pump	max. 500 ²	216	●
% of shelters within 200 meters of a functioning hand pump ³	100%	100%	●
# of people per functional (non-full) latrine	max. 50 ⁴	117	●
# of people per safe latrine	N/A	225	N/A
% of shelters within 50 meters to a functional (non-full) latrine	100%	60%	●
% of latrines that are at least 10 meters away from a water point	100%	67%	●

¹ Safe refers to fully covered latrines (i.e. a latrine with four walls, a roof and a door) ² This target is based on standards for the long term (6 months+), for the immediate and medium phase (0-6 months) it is 500. ³ The distance is based on standards for the long term (6 months+), for the immediate phase (0-3 months) it is 750 meters and for the medium phase (3-6 months) 500 meters. ⁴ This target is based on standards for the long term (6 months+), for the immediate phase (0-3 months) it is 100 and for the medium phase (3-6 months) 75.

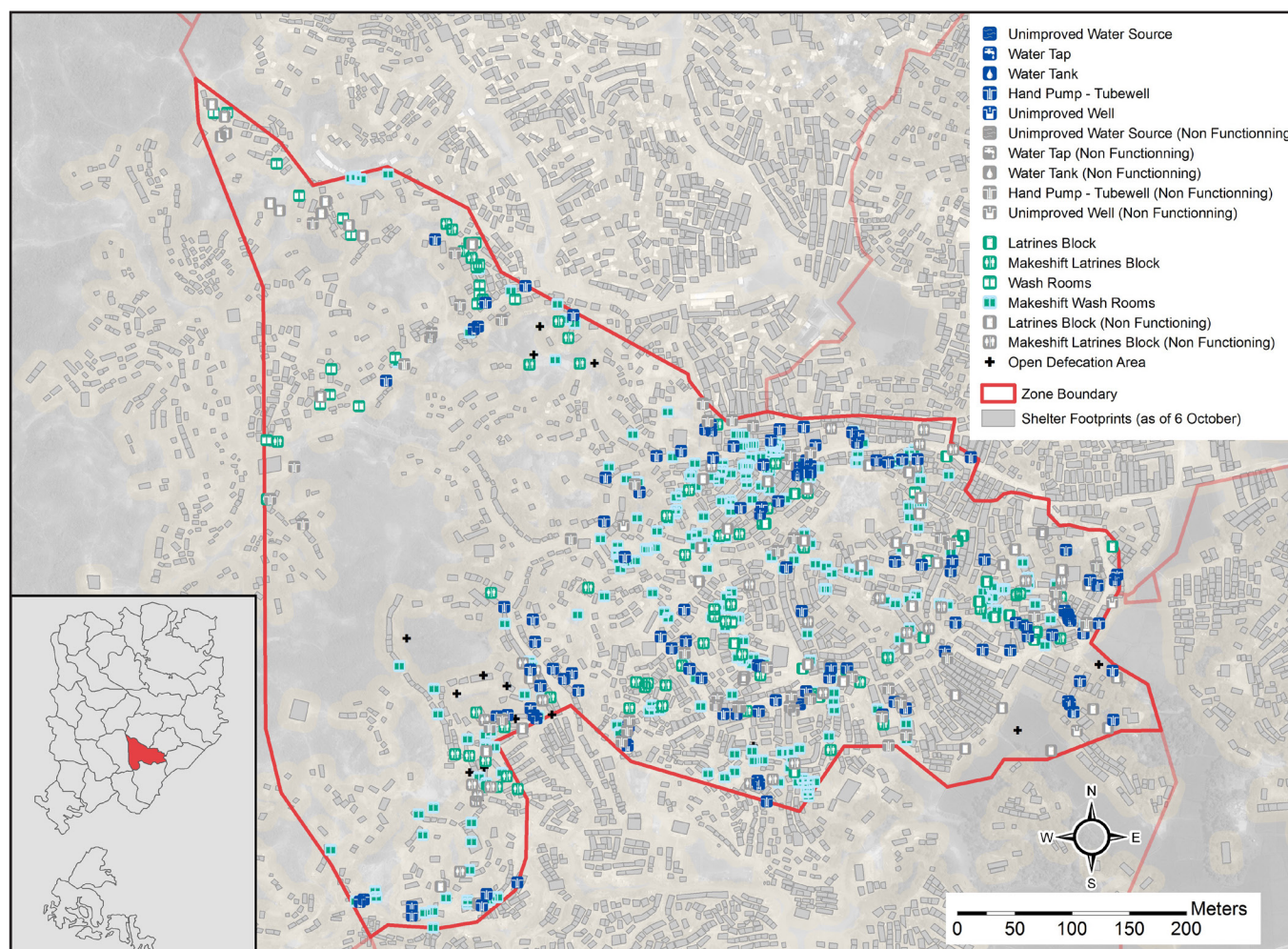


This profile provides an overview of WASH infrastructure within Zone MM in Ukhiya, Cox's Bazar. Primary data represents infrastructure present up to 18 October 2017. Findings should be considered indicative only.

# of individuals:	10,380	# of latrines:	324	# of handpumps, % of functional	
# of shelters:	1815	% of safe latrines ¹ :	61%	handpumps:	200 (71%)
# of individuals per shelter:	6	% of functional latrines:	52%	# of bathing facilities:	416

Site Map

Coordinates: 21.188858, 92.154981



Key WASH findings

Targets based on WASH Sector Standards/Indicators for Rohingya response, Sphere Minimum Standards/Indicators as well as DPHE Minimum Standards/Indicators. *Minimum standard/indicator reached, *More than 75% minimum standard/indicator reached, *More than 50% minimum standard/indicator reached, *Less than 50% of minimum standard/indicator reached

	Target	Current Round	Achievement
# of people per functioning hand pump	max. 500 ²	74	●
% of shelters within 200 meters of a functioning hand pump ³	100%	100%	●
# of people per functional (non-full) latrine	max. 50 ⁴	61	●
# of people per safe latrine	N/A	53	N/A
% of shelters within 50 meters to a functional (non-full) latrine	100%	81%	●
% of latrines that are at least 10 meters away from a water point	100%	73%	●

¹ Safe refers to fully covered latrines (i.e. a latrine with four walls, a roof and a door). ² This target is based on standards for the long term (6 months+), for the immediate and medium phase (0-6 months) it is 500. ³ The distance is based on standards for the long term (6 months+), for the immediate phase (0-3 months) it is 750 meters and for the medium phase (3-6 months) 500 meters. ⁴ This target is based on standards for the long term (6 months+), for the immediate phase (0-3 months) it is 100 and for the medium phase (3-6 months) 75.

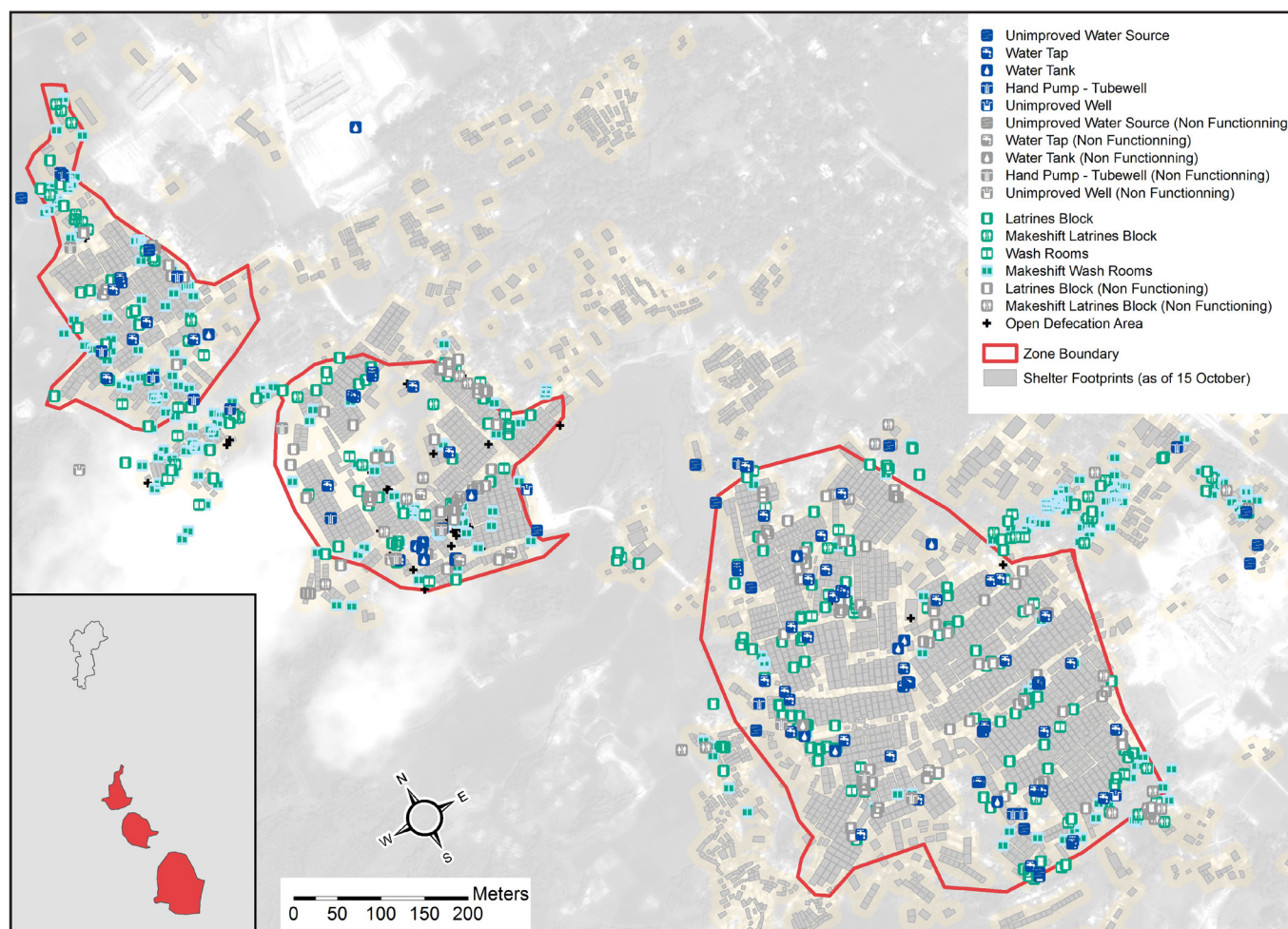


This profile provides an overview of WASH infrastructure within Nayapara in Teknaf, Cox's Bazar. Primary data represents infrastructure present up to 18 October 2017. Findings should be considered indicative only.

# of individuals:	34,557	# of latrines:	1242	# of handpumps, % of functional	
# of shelters:	4249	% of safe latrines ¹ :	79%	handpumps:	21* (62%)
# of individuals per shelter:	8	% of functional latrines:	73%	# of bathing facilities:	465

Site Map

Coordinates: 21.064647, 92.224104



Key WASH findings

Targets based on WASH Sector Standards/Indicators for Rohingya response, Sphere Minimum Standards/Indicators as well as DPHE Minimum Standards/Indicators. *Minimum standard/indicator reached, *More than 75% minimum standard/indicator reached, *More than 50% minimum standard/indicator reached, *Less than 50% of minimum standard/indicator reached

	Target	Current Round	Achievement
# of people per functioning hand pump	max. 500 ²	2,658	●
% of shelters within 200 meters of a functioning hand pump ³	100%	78%	●
# of people per functional (non-full) latrine	max. 50 ⁴	38	●
# of people per safe latrine	N/A	35	N/A
% of shelters within 50 meters to a functional (non-full) latrine	100%	71%	●
% of latrines that are at least 10 meters away from a water point	100%	82%	●

* The relatively low number of handpumps in this location could be due to the presence of other sources of water here- 16 water tanks identified.

¹ Safe refers to fully covered latrines (i.e. a latrine with four walls, a roof and a door) ² This target is based on standards for the long term (6 months+), for the immediate and medium phase (0-6 months) it is 500. ³ The distance is based on standards for the long term (6 months+), for the immediate phase (0-3 months) it is 750 meters and for the medium phase (3-6 months) 500 meters.

⁴ This target is based on standards for the long term (6 months +), for the immediate phase (0-3 months) it is 100 and for the medium phase (3-6 months) 75.

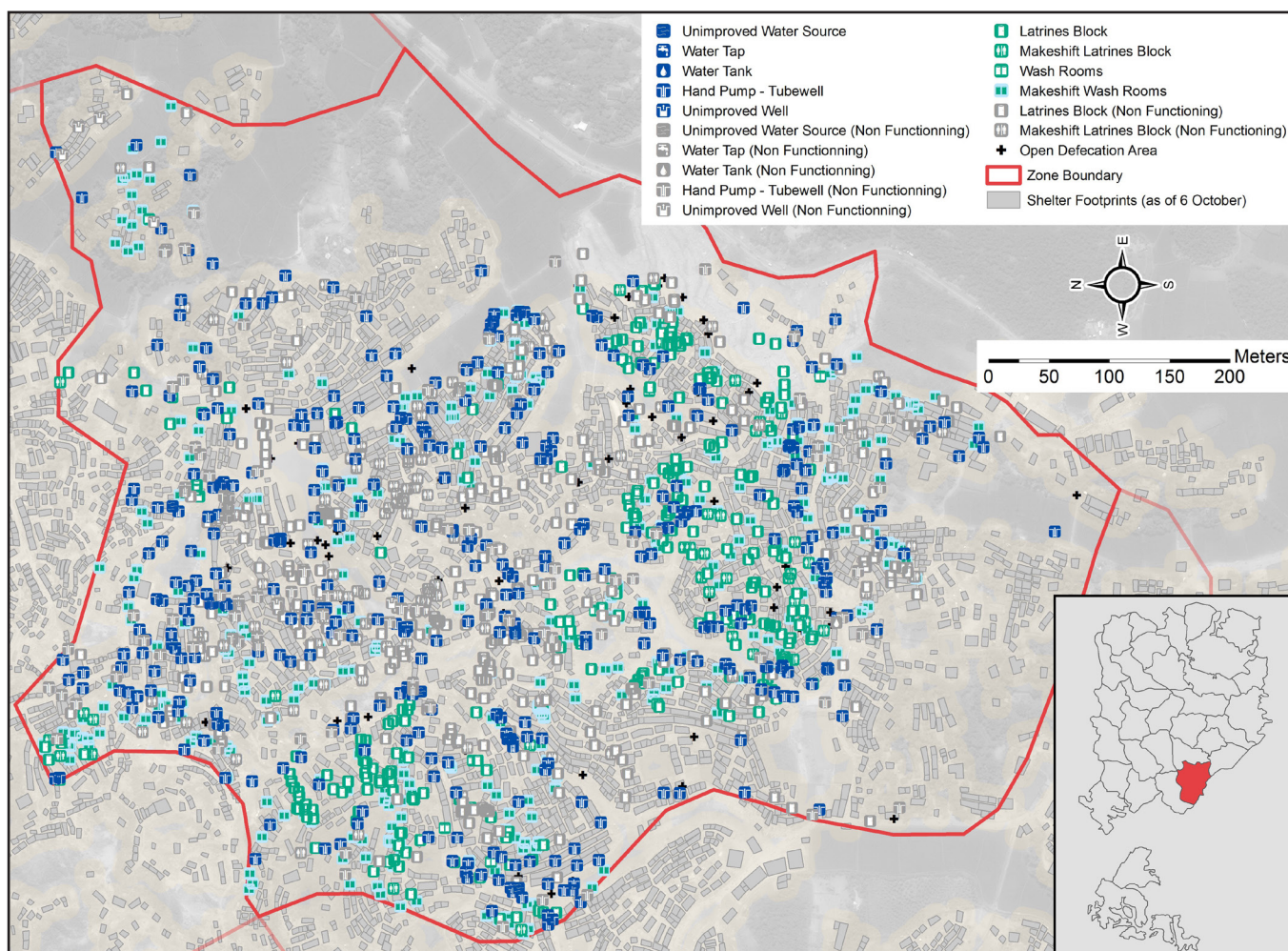


This profile provides an overview of WASH infrastructure within Zone NN in Ukhiya, Cox's Bazar. Primary data represents infrastructure present up to 18 October 2017. Findings should be considered indicative only.

# of individuals:	50,852	# of latrines:	875	# of handpumps, % of functional	
# of shelters:	3360	% of safe latrines ¹ :	62%	handpumps:	481 (81%)
# of individuals per shelter:	15	% of functional latrines:	55%	# of bathing facilities:	391

Site Map

Coordinates: 21.183819, 92.155989



Key WASH findings

Targets based on WASH Sector Standards/Indicators for Rohingya response, Sphere Minimum Standards/Indicators as well as DPHE Minimum Standards/Indicators. *Minimum standard/indicator reached, *More than 75% minimum standard/indicator reached, *More than 50% minimum standard/indicator reached, *Less than 50% of minimum standard/indicator reached

	Target	Current Round	Achievement
# of people per functioning hand pump	max. 500 ²	131	●
% of shelters within 200 meters of a functioning hand pump ³	100%	100%	●
# of people per functional (non-full) latrine	max. 50 ⁴	105	●
# of people per safe latrine	N/A	94	N/A
% of shelters within 50 meters to a functional (non-full) latrine	100%	74%	●
% of latrines that are at least 10 meters away from a water point	100%	60%	●

¹ Safe refers to fully covered latrines (i.e. a latrine with four walls, a roof and a door) ² This target is based on standards for the long term (6 months+), for the immediate and medium phase (0-6 months) it is 500. ³ The distance is based on standards for the long term (6 months+), for the immediate phase (0-3 months) it is 750 meters and for the medium phase (3-6 months) 500 meters. ⁴ This target is based on standards for the long term (6 months+), for the immediate phase (0-3 months) it is 100 and for the medium phase (3-6 months) 75.

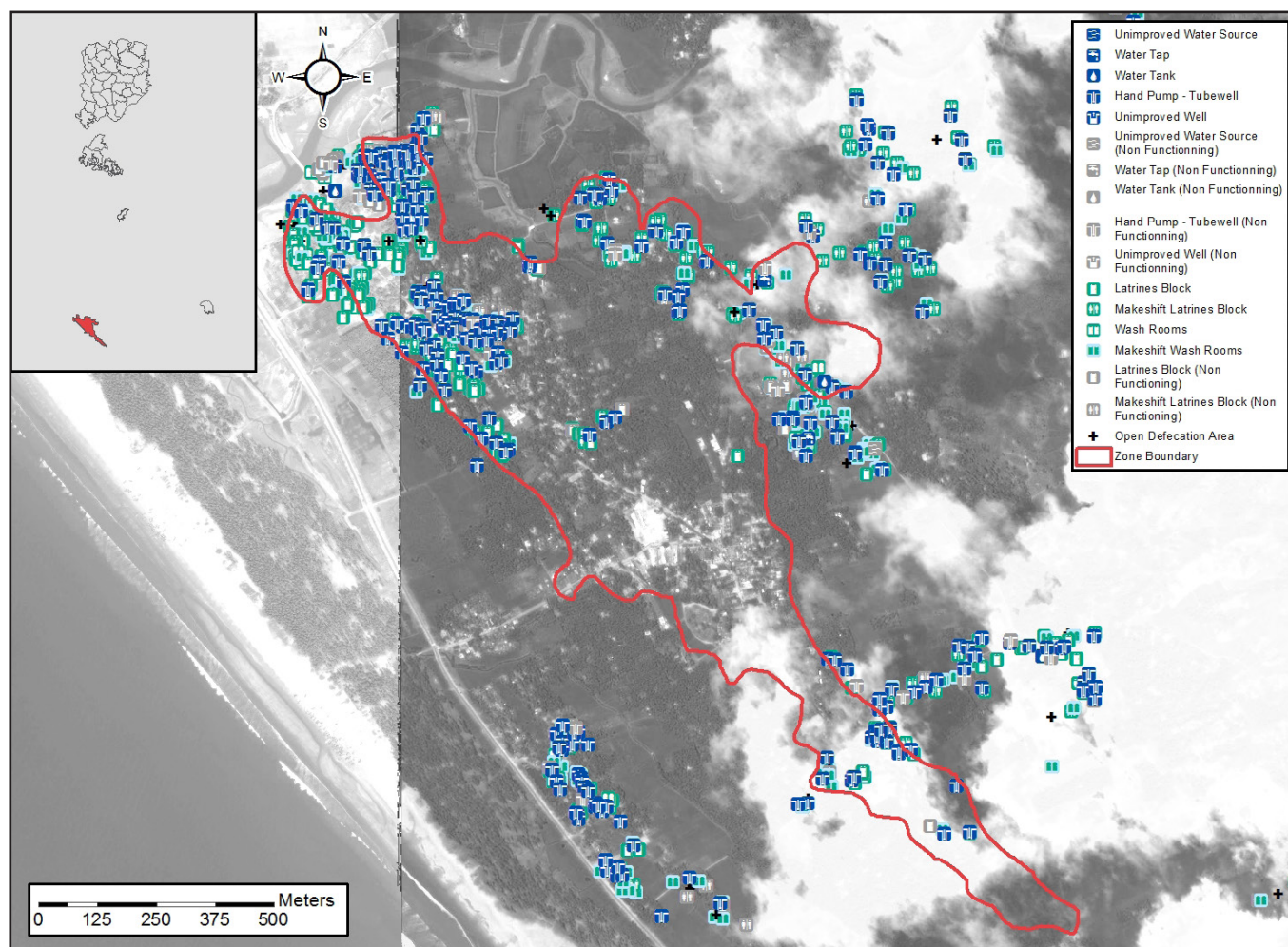


This profile provides an overview of WASH infrastructure within Shamlapur in Teknaf, Cox's Bazar. Primary data represents infrastructure present up to 18 October 2017. Findings should be considered indicative only.

# of individuals:	22,067	# of latrines:	707	# of handpumps, % of functional	
# of shelters:		% of safe latrines ¹ :	76%	handpumps:	383 (92%)
Shelter data not available		% of functional latrines:	67%	# of bathing facilities:	399

Site Map

Coordinates: 21.076278, 92.137277



Key WASH findings

Targets based on WASH Sector Standards/Indicators for Rohingya response, Sphere Minimum Standards/Indicators as well as DPHE Minimum Standards/Indicators. *Minimum standard/indicator reached, *More than 75% minimum standard/indicator reached, *More than 50% minimum standard/indicator reached, *Less than 50% of minimum standard/indicator reached

	Target	Current Round	Achievement
# of people per functioning hand pump	max. 500 ²	63	●
% of shelters within 200 meters of a functioning hand pump ³	100%	Shelter data not available	N/A
# of people per functional (non-full) latrine	max. 50 ⁴	46	●
# of people per safe latrine	N/A	41	N/A
% of shelters within 50 meters to a functional (non-full) latrine	100%	Shelter data not available	N/A
% of latrines that are at least 10 meters away from a water point	100%	65%	●

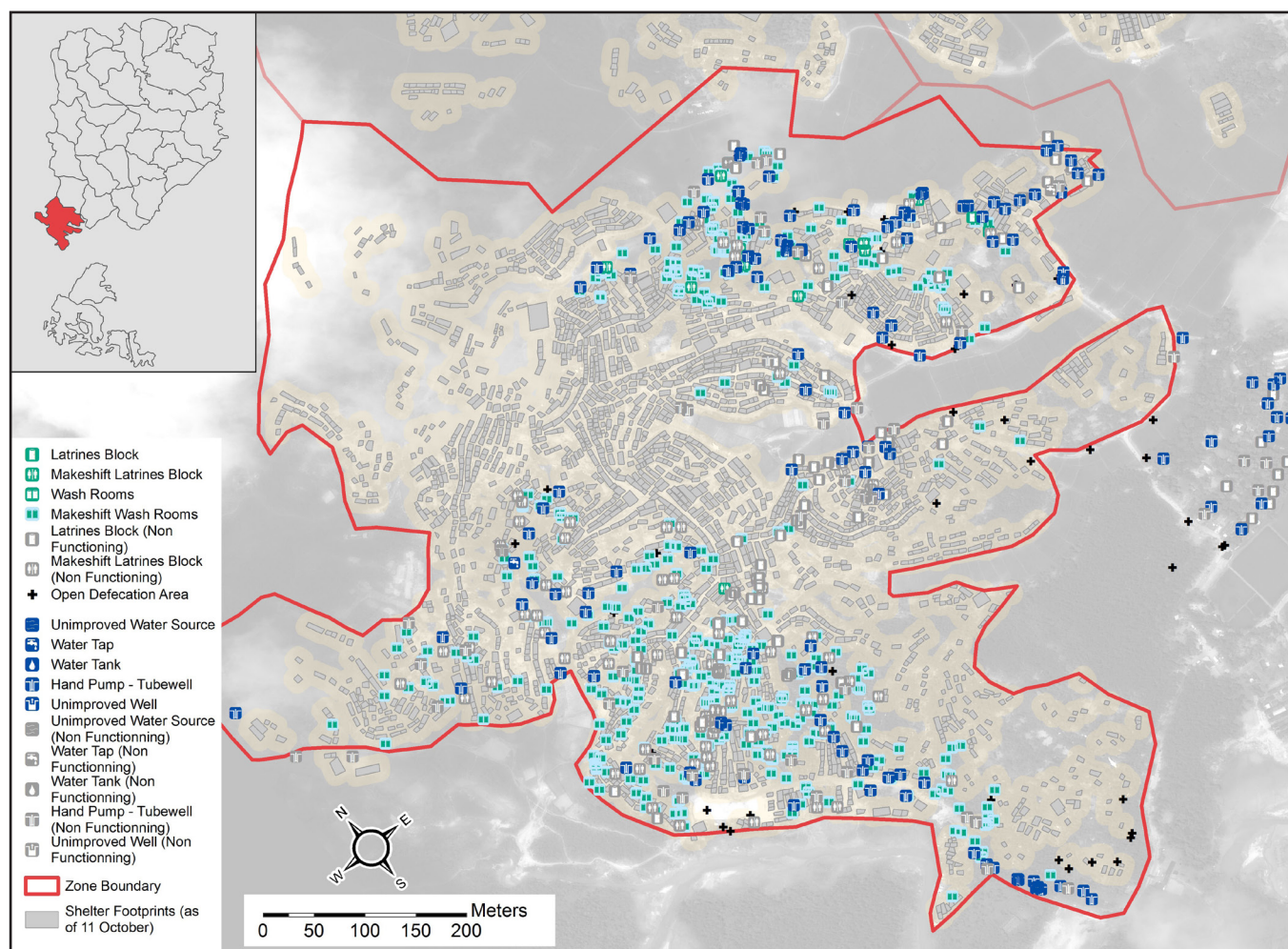
¹ Safe refers to fully covered latrines (i.e. a latrine with four walls, a roof and a door) ² This target is based on standards for the long term (6 months+), for the immediate and medium phase (0-6 months) it is 500. ³ The distance is based on standards for the long term (6 months+), for the immediate phase (0-3 months) it is 750 meters and for the medium phase (3-6 months) 500 meters. ⁴ This target is based on standards for the long term (6 months+), for the immediate phase (0-3 months) it is 100 and for the medium phase (3-6 months) 75.

This profile provides an overview of WASH infrastructure within Thangkhali in Ukhiya, Cox's Bazar. Primary data represents infrastructure present up to 18 October 2017. Findings should be considered indicative only.

# of individuals:	27,594	# of latrines:	329	# of handpumps, % of functional	
# of shelters:	1654	% of safe latrines ¹ :	30%	handpumps:	245 (76%)
# of individuals per shelter:	17	% of functional latrines:	70%	# of bathing facilities:	403

Site Map

Coordinates: 21.180011, 92.140311



Key WASH findings

Targets based on WASH Sector Standards/Indicators for Rohingya response, Sphere Minimum Standards/Indicators as well as DPHE Minimum Standards/Indicators. *Minimum standard/indicator reached, *More than 75% minimum standard/indicator reached, *More than 50% minimum standard/indicator reached, *Less than 50% of minimum standard/indicator reached

	Target	Current Round	Achievement
# of people per functioning hand pump	max. 500 ²	149	●
% of shelters within 200 meters of a functioning hand pump ³	100%	100%	●
# of people per functional (non-full) latrine	max. 50 ⁴	120	●
# of people per safe latrine	N/A	276	N/A
% of shelters within 50 meters to a functional (non-full) latrine	100%	59%	●
% of latrines that are at least 10 meters away from a water point	100%	50%	●

¹ Safe refers to fully covered latrines (i.e. a latrine with four walls, a roof and a door) ² This target is based on standards for the long term (6 months+), for the immediate and medium phase (0-6 months) it is 500. ³ The distance is based on standards for the long term (6 months+), for the immediate phase (0-3 months) it is 750 meters and for the medium phase (3-6 months) 500 meters. ⁴ This target is based on standards for the long term (6 months+), for the immediate phase (0-3 months) it is 100 and for the medium phase (3-6 months) 75.

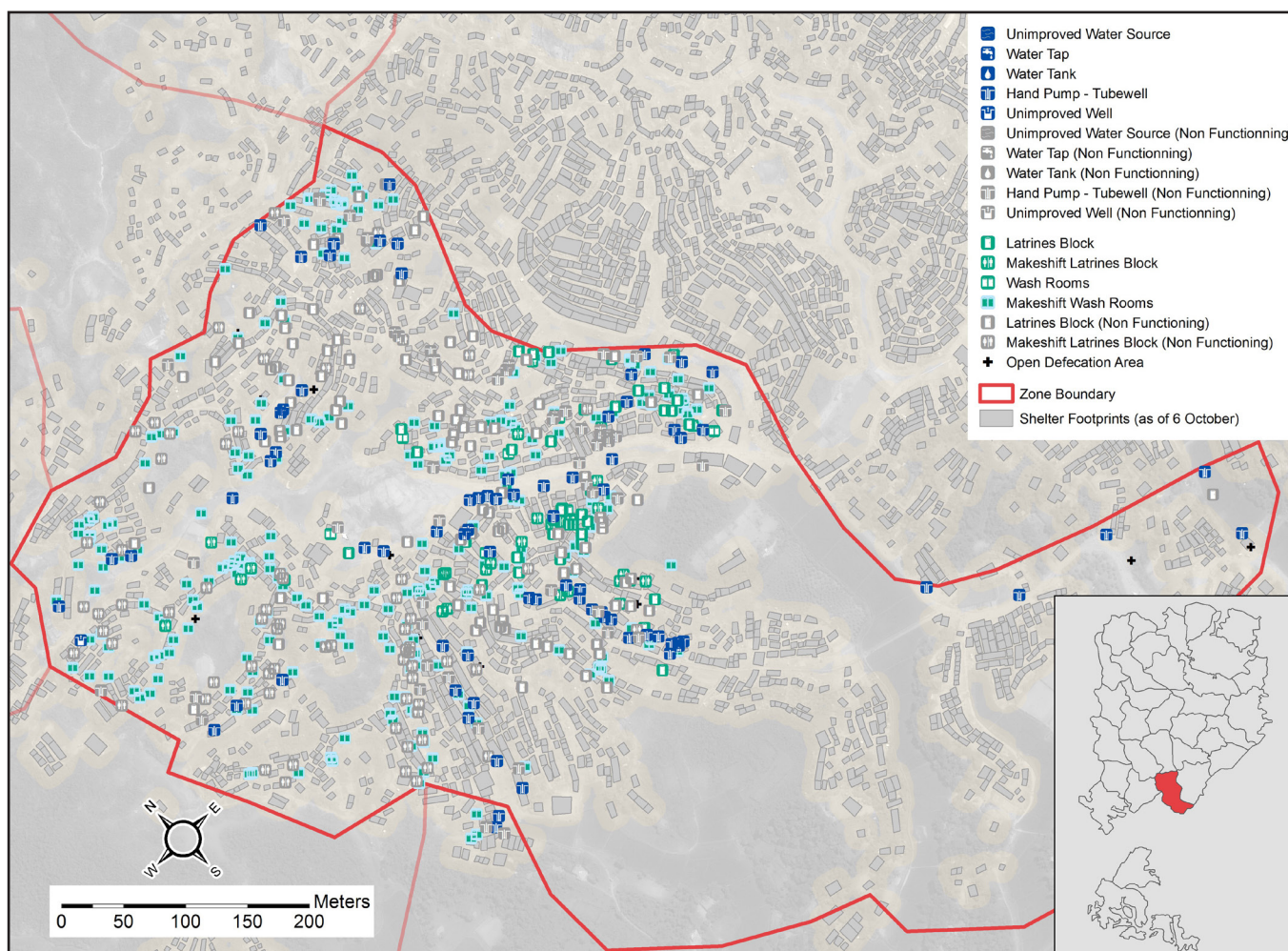


This profile provides an overview of WASH infrastructure within Zone TT in Ukhiya, Cox's Bazar. Primary data represents infrastructure present up to 18 October 2017. Findings should be considered indicative only.

# of individuals:	27,600	# of latrines:	305	# of handpumps, % of functional	
# of shelters:	2974	% of safe latrines ¹ :	52%	handpumps:	128 (61%)
# of individuals per shelter:	9	% of functional latrines:	71%	# of bathing facilities:	291

Site Map

Coordinates: 21.182027, 92.152181



Key WASH findings

Targets based on WASH Sector Standards/Indicators for Rohingya response, Sphere Minimum Standards/Indicators as well as DPHE Minimum Standards/Indicators. *Minimum standard/indicator reached, *More than 75% minimum standard/indicator reached, *More than 50% minimum standard/indicator reached, *Less than 50% of minimum standard/indicator reached

	Target	Current Round	Achievement
# of people per functioning hand pump	max. 500 ²	354	●
% of shelters within 200 meters of a functioning hand pump ³	100%	100%	●
# of people per functional (non-full) latrine	max. 50 ⁴	128	●
# of people per safe latrine	N/A	175	N/A
% of shelters within 50 meters to a functional (non-full) latrine	100%	46%	●
% of latrines that are at least 10 meters away from a water point	100%	78%	●

¹ Safe refers to fully covered latrines (i.e. a latrine with four walls, a roof and a door) ² This target is based on standards for the long term (6 months+), for the immediate and medium phase (0-6 months) it is 500. ³ The distance is based on standards for the long term (6 months+), for the immediate phase (0-3 months) it is 750 meters and for the medium phase (3-6 months) 500 meters. ⁴ This target is based on standards for the long term (6 months+), for the immediate phase (0-3 months) it is 100 and for the medium phase (3-6 months) 75.

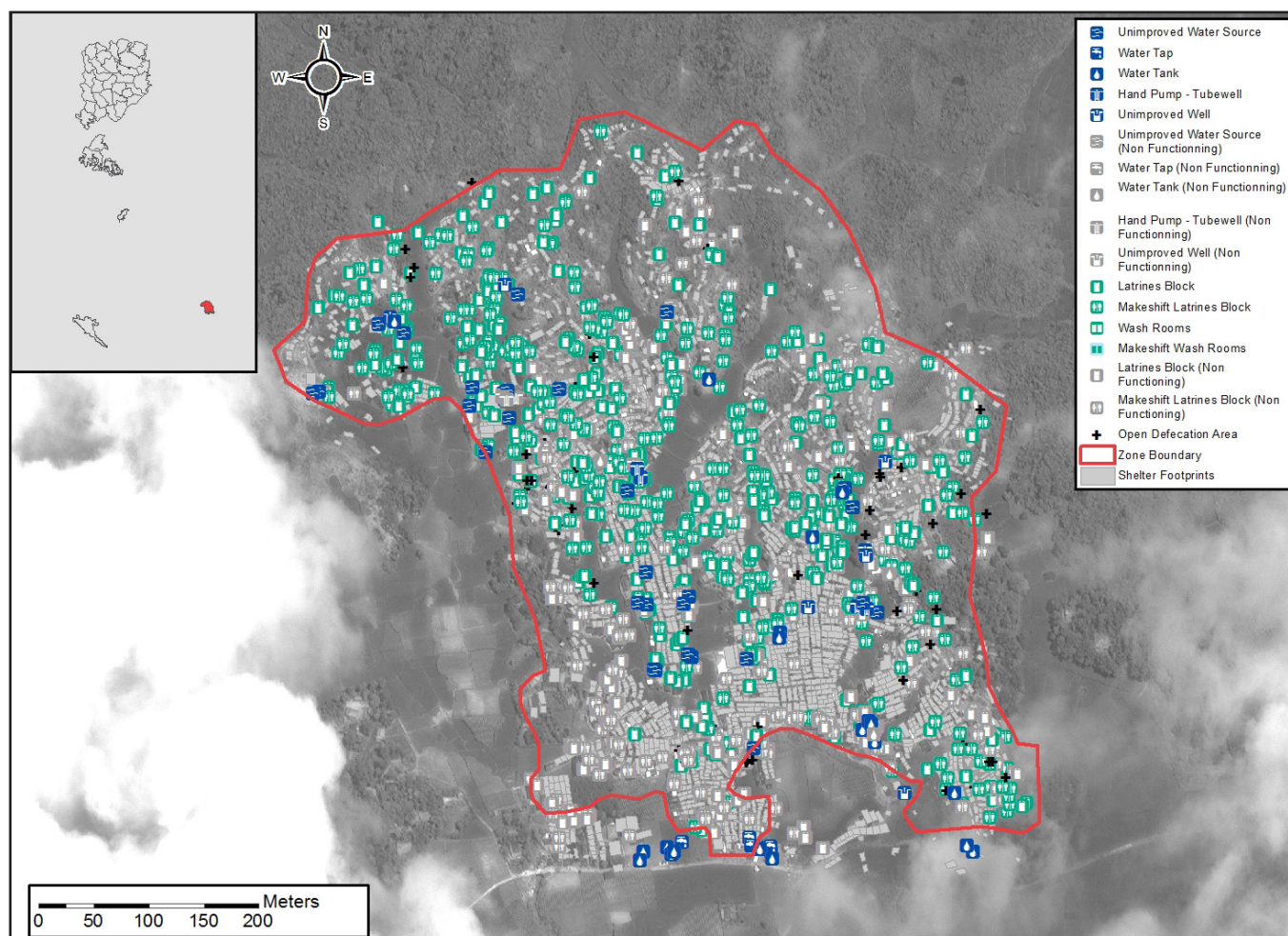


This profile provides an overview of WASH infrastructure within Unchiprang in Teknaf, Cox's Bazar. Primary data represents infrastructure present up to 18 October 2017. Findings should be considered indicative only.

# of individuals:	29,915	# of latrines:	1090	# of handpumps, % of functional	
# of shelters:	1735	% of safe latrines ¹ :	74%	handpumps:	12* (50%)
# of individuals per shelter:	14	% of functional latrines:	64%	# of bathing facilities:	950

Site Map

Coordinates: 21.086520, 92.199444



Key WASH findings

Targets based on WASH Sector Standards/Indicators for Rohingya response, Sphere Minimum Standards/Indicators as well as DPHE Minimum Standards/Indicators. *Minimum standard/indicator reached, *More than 75% minimum standard/indicator reached, *More than 50% minimum standard/indicator reached, *Less than 50% of minimum standard/indicator reached

	Target	Current Round	Achievement
# of people per functioning hand pump	max. 500 ²	4,986	●
% of shelters within 200 meters of a functioning hand pump ³	100%	83%	●
# of people per functional (non-full) latrine	max. 50 ⁴	43	●
# of people per safe latrine	N/A	37	N/A
% of shelters within 50 meters to a functional (non-full) latrine	100%	99%	●
% of latrines that are at least 10 meters away from a water point	100%	92%	●

*The relatively low number of handpumps identified in this area could be due to the presence of other sources of water- 27 water tanks, 30 unimproved water sources, 4 taps and 6 wells identified.

¹ Safe refers to fully covered latrines (i.e. a latrine with four walls, a roof and a door) ² This target is based on standards for the long term (6 months+), for the immediate and medium phase (0-6 months) it is 500. ³ The distance is based on standards for the long term (6 months+), for the immediate phase (0-3 months) it is 750 meters and for the medium phase (3-6 months) 500 meters.

⁴ This target is based on standards for the long term (6 months +), for the immediate phase (0-3 months) it is 100 and for the medium phase (3-6 months) 75.