



# IDP Camp Profile - Alwand 1

Diyala, Iraq  
January 2018

Management agency: Government and YAO  
Manager/Focal point: Mithaq Abdul Hamad  
Registration actor: YAO Organization

## Summary

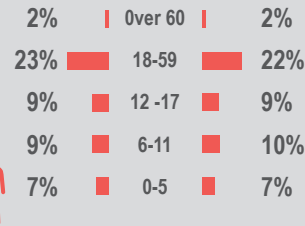
This profile provides an overview of conditions in Alwand 1 camp. Primary data was collected through household surveys on 28/01/2018. Households were randomly sampled to a 95% confidence level and a 10% margin of error, based on population figures provided by CCCM. In some cases, additional information from camp managers has been used to support findings.

## Camp Overview

# of individuals: 3383  
# of households: 719  
Date opened: 9/28/2014  
Occupied shelters: 1050  
Planned shelters: 1100  
Ongoing extension: no  
Camp area: 225,388m<sup>2</sup>

## Demographics

50% male / 50% female

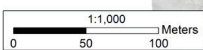
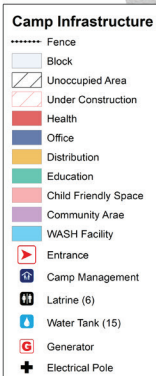
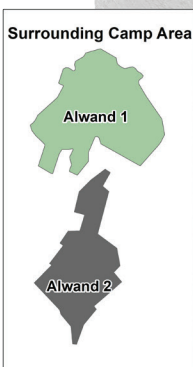


## Location Map

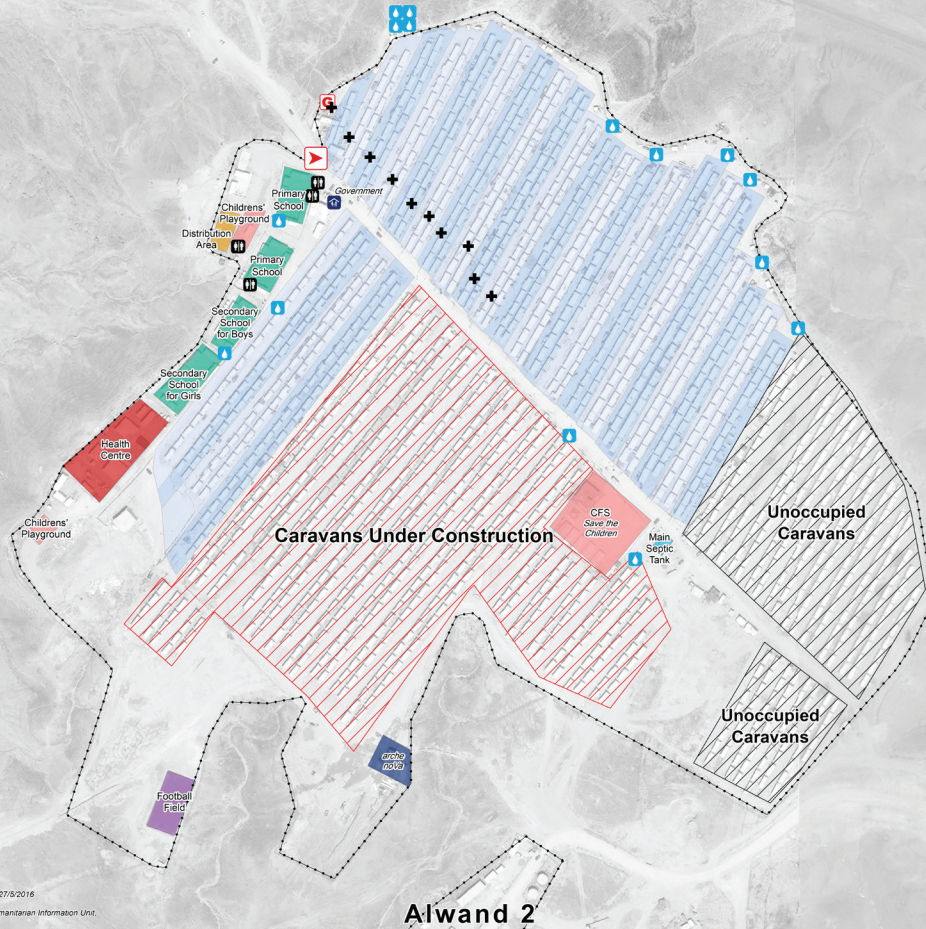


## IDP Camp Map - Alwand 1

Lat. 35° 25' 3.431" N Long. 45° 36' 21.359" E



Satellite Imagery: WorldView-1 from 27/5/2016  
Copyright: DigitalGlobe  
Source: US Department of State, Humanitarian Information Unit, NextView License



## Sectoral Minimum Standards

		Target	Previous Round	Current Round	Achievement
CCCM	Average open area per household	Min. 30m <sup>2</sup>	193 m <sup>2</sup>	256 m <sup>2</sup>	●
Protection	% of IDPs registered on an individual basis (MODM/DDM)	100%	96%	95%	●
WASH	# of persons per latrine	Max. 20	2	3	●
	# of persons per shower	Max. 20	3	3	●
	Frequency of solid waste disposal	Min. weekly	Every week	Every day	●
Shelter	Average area covered per person	Min. 3.5m <sup>2</sup>	5.6 m <sup>2</sup>	5.6 m <sup>2</sup>	●
	Average number of individuals per shelter	Max. 5	5	5	●
Food	% households accessed Family Food Parcel or equivalent in previous month	100%	n/a*	24%	●
Health	Health services available on-site or within walking distance	Yes	yes	yes	●
Education	% of children aged 6-11 attending formal school	100%	70%	85%	●
	% of children aged 12-17 attending formal school	100%	74%	68%	●

\*Method of calculation for food distribution has changed from previous rounds

Targets based on minimum standards agreed with the CCCM Cluster, Iraq. Findings based on household-level data, enumerator field observations, and camp management documentation  
● Minimum standard reached, ● 50-99% of minimum standard reached, ● Less than 50% of minimum standard reached or not at all





# IDP Camp Profile - Alwand 1

Diyala, Iraq  
January 2018



## Protection

### Vulnerable groups

Pregnant / lactating women	2%	<div></div>
Chronically ill individual(s)	8%	<div></div>
Disabled individual(s)	3%	<div></div>
Female headed households	12%	<div></div>

### Intentions

19%	planned to move to a different location in next 3 months
15%	reported needing financial support to return and restart in order to return safely to their area of origin

### Restrictions

99%	reported being able to leave the camp temporarily (e.g. to go to the market, for livelihood opportunities)
-----	--

### Documentation

4%	reported that one or more member is missing one or more documents
n/a**	reported that at least one of the members missing documents is an adult (18+)

### Top three missing documents reported by those households\*

n/a\*\*  
n/a\*\*  
n/a\*\*

### Top two reasons for not attending education\*

(of households with school-aged children not attending school)

Child is disinterested	42%
Child assists with household chores	17%



## Access to information

### Top three information sources regarding area of origin\*

From others who visited	89%	<div></div>
Personally visited	9%	<div></div>
Others who have not visited	2%	<div></div>

### Top three information needs\*

Security situation	93%	<div></div>
Livelihood sources	67%	<div></div>
Basic services	53%	<div></div>



## Livelihoods

3% reported not having an income source

### Top three income sources\*

Unskilled labour	31%	<div></div>
Self employed	15%	<div></div>
Low skilled service	14%	<div></div>

### Top three reported livelihood coping strategies\*

Charitable donations	35%	<div></div>
Charitable donations	35%	<div></div>
Sold assistance	30%	<div></div>



## Priority Needs

### Top 3 reported priority needs\*

Food	73%	<div></div>
Employment	50%	<div></div>
Medical care	30%	<div></div>



## WASH

### Latrines

0%	reported access to public or communal latrines. Of those:
n/a	reported latrines were lockable from the inside
n/a	reported latrines had functioning lighting
n/a	reported latrines were gender segregated

### Top two most reported methods of waste removal

Collected	100%	<div></div>
n/a	n/a	

### Primary drinking water sources

54%	bottled water from the shop
24%	indoor water point

### Access to drinking water

4%	reported at least 24 consecutive hours without access to water in the month prior to the assessment
----	---



## Shelter

2% reported flooding in their shelter in the previous year

### Top observed shelter type

Caravan	100%	<div></div>
n/a	of tents have secondary cover	

### Top reported needed basic items\*

Heating fuel	41%	<div></div>
Fuel storage	18%	<div></div>
Cooking stove	9%	<div></div>

### Top reported needed winter item\*

Kerosene heater	96%	<div></div>
-----------------	-----	-------------

### Electricity access

Average number of hours of electricity per day	22
--	----



## Food Security

### Reported access to food assistance

24%	reported having received Public Distribution System (PDS) assistance in the month prior to the assessment
98%	reported access to a market within walking distance

### Top two food consumption coping strategies\*

Buy less expensive food	80%	<div></div>
Limit portions	27%	<div></div>

\*Respondents could select multiple responses  
\*\*Insufficient sample size; fewer than five respondents







# IDP Camp Profile - Alwand 2

Diyala, Iraq  
January 2018

Management agency: Government and YAO Organization  
Manager/Focal point: Ibrahim Karam Ali  
Registration actor: YAO Organization

## Summary

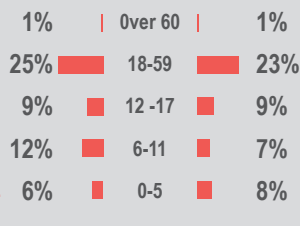
This profile provides an overview of conditions in Alwand 2 camp. Primary data was collected through household surveys on 28/01/2018. Households were randomly sampled to a 95% confidence level and a 10% margin of error, based on population figures provided by CCCM. In some cases, additional information from camp managers has been used to support findings.

## Camp Overview

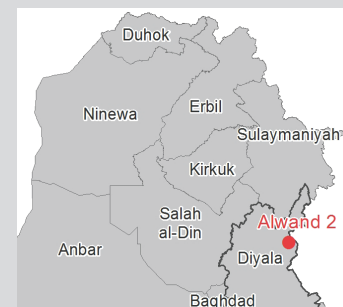
# of individuals: 1250  
# of households: 270  
Date opened: 10/28/2015  
Occupied shelters: 300  
Planned shelters: 318  
Ongoing extension: no  
Camp area: 148,345m<sup>2</sup>

## Demographics

52% male / 48% female

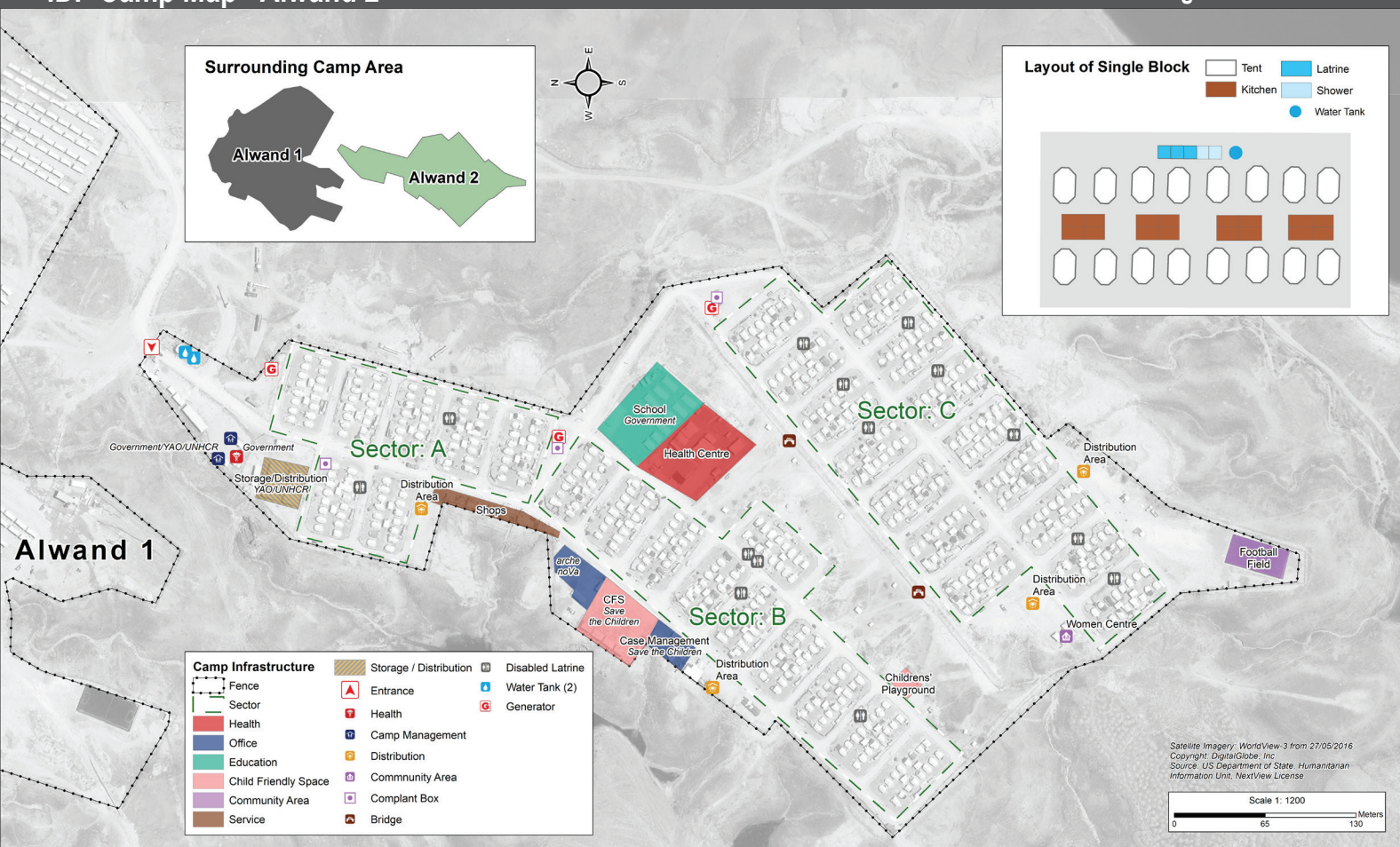


## Location Map



## IDP Camp Map - Alwand 2

Lat. 34° 19' 26.35" N Long. 45° 27' 11.29" E



## Sectoral Minimum Standards

		Target	Previous Round	Current Round	Achievement
CCCM	Average open area per household	Min. 30m <sup>2</sup>	309 m <sup>2</sup>	477 m <sup>2</sup>	●
Protection	% of IDPs registered on an individual basis (MODM/DDM)	100%	98%	95%	●
WASH	# of persons per latrine	Max. 20	7	5	●
	# of persons per shower	Max. 20	11	5	●
	Frequency of solid waste disposal	Min. weekly	n/a	Every day	●
Shelter	Average area covered per person	Min. 3.5m <sup>2</sup>	4.6 m <sup>2</sup>	4.6 m <sup>2</sup>	●
	Average number of individuals per shelter	Max. 5	5	4	●
Food	% households accessed Family Food Parcel or equivalent in previous month	100%	n/a*	32%	●
Health	Health services available on-site or within walking distance	Yes	yes	yes	●
Education	% of children aged 6-11 attending formal school	100%	16%	80%	●
	% of children aged 12-17 attending formal school	100%	80%	69%	●

\*Method of calculation for food distribution has changed from previous rounds

Targets based on minimum standards agreed with the CCCM Cluster, Iraq. Findings based on household-level data, enumerator field observations, and camp management documentation  
● Minimum standard reached, ● 50-99% of minimum standard reached, ● Less than 50% of minimum standard reached or not at all





# IDP Camp Profile - Alwand 2

Diyala, Iraq  
January 2018



## Protection

### Vulnerable groups

Pregnant / lactating women	1%	I
Chronically ill individual(s)	7%	■
Disabled individual(s)	3%	I
Female headed households	20%	■

### Intentions

40%	planned to move to a different location in next 3 months
21%	reported needing financial support to return and restart in order to return safely to their area of origin

### Restrictions

100%	reported being able to leave the camp temporarily (e.g. to go to the market, for livelihood opportunities)
------	--

### Documentation

1%	reported that one or more member is missing one or more documents
n/a**	reported that at least one of the members missing documents is an adult (18+)

### Top three missing documents reported by those households\*

n/a\*\*  
n/a\*\*  
n/a\*\*

### Top two reasons for not attending education\*

(of households with school-aged children not attending school)

Child is disinterested	50%
Health reasons	25%



## Access to information

### Top three information sources regarding area of origin\*

From others who visited	98%	■
Personally visited	2%	I
	n/a	

### Top three information needs\*

Security situation	90%	■
Livelihood sources	60%	■
Basic services	58%	■



## Livelihoods

0% reported not having an income source

### Top three income sources\*

Unskilled labour	29%	■
Low skilled service	14%	■
Low skilled service	14%	■

### Top three reported livelihood coping strategies\*

Sold assistance	36%	■
None	26%	■
Charitable donations	24%	■



## Priority Needs

### Top 3 reported priority needs\*

Food	78%	■
Employment	38%	■
Clothing	33%	■



## WASH

### Latrines

29%	reported access to public or communal latrines. Of those:
100%	reported latrines were lockable from the inside
87%	reported latrines had functioning lighting
70%	reported latrines were gender segregated

### Top two most reported methods of waste removal

Collected	100%	■
n/a	n/a	

### Primary drinking water sources

65%	bottled water from the shop
28%	outdoor water point

### Access to drinking water

0%	reported at least 24 consecutive hours without access to water in the month prior to the assessment
----	---



## Shelter

15% reported flooding in their shelter in the previous year

### Top observed shelter type

Tent	99%	■
	100%	of tents have secondary cover

### Top reported needed basic items\*

Heating fuel	64%	■
Fuel storage	29%	■
Winter clothes	16%	■

### Top reported needed winter item\*

Kerosene heater	100%	■
-----------------	------	---

### Electricity access

Average number of hours of electricity per day	22
--	----



## Food Security

### Reported access to food assistance

32%	reported having received Public Distribution System (PDS) assistance in the month prior to the assessment
98%	reported access to a market within walking distance

### Top two food consumption coping strategies\*

Buy less expensive food	83%	■
Limit portions	21%	■

\*Respondents could select multiple responses  
\*\*Insufficient sample size; fewer than five respondents







# IDP Camp Profile - Muskar Saad

Diyala, Iraq  
January 2018

Management agency: Government  
Manager/Focal point: Mahdi Attia Ahmed  
Registration actor: Camp Management

## Summary

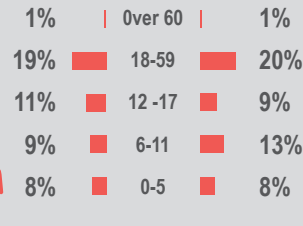
This profile provides an overview of conditions in Muskar Saad camp. Primary data was collected through household surveys on 22/01/2018. Households were randomly sampled to a 95% confidence level and a 10% margin of error, based on population figures provided by CCCM. In some cases, additional information from camp managers has been used to support findings.

## Camp Overview

# of individuals: 1150  
# of households: 183  
Date opened: 12/5/2014  
Occupied shelters: 210  
Planned shelters: 213  
Ongoing extension: no  
Camp area: 28,962m<sup>2</sup>

## Demographics

49% male / 51% female



## Location Map



## IDP Camp Map - Muskar Saad

Lat. 33° 45' 39.53" N Long. 44° 40' 23.92" E



## Sectoral Minimum Standards

		Target	Previous Round	Current Round	Achievement
CCCM	Average open area per household	Min. 30m <sup>2</sup>	n/a	118 m <sup>2</sup>	●
Protection	% of IDPs registered on an individual basis (MODM/DDM)	100%	n/a	97%	●
WASH	# of persons per latrine	Max. 20	n/a	5	●
	# of persons per shower	Max. 20	n/a	5	●
	Frequency of solid waste disposal	Min. weekly	n/a	Every week	●
Shelter	Average area covered per person	Min. 3.5m <sup>2</sup>	n/a	4.5 m <sup>2</sup>	●
	Average number of individuals per shelter	Max. 5	n/a	5	●
Food	% households accessed Family Food Parcel or equivalent in previous month	100%	n/a*	41%	●
Health	Health services available on-site or within walking distance	Yes	n/a	yes	●
Education	% of children aged 6-11 attending formal school	100%	n/a	84%	●
	% of children aged 12-17 attending formal school	100%	n/a	74%	●

\*Method of calculation for food distribution has changed from previous rounds

Targets based on minimum standards agreed with the CCCM Cluster, Iraq. Findings based on household-level data, enumerator field observations, and camp management documentation  
● Minimum standard reached, ● 50-99% of minimum standard reached, ● Less than 50% of minimum standard reached or not at all





# IDP Camp Profile - Muskar Saad

Diyala, Iraq  
January 2018



## Protection

### Vulnerable groups

Pregnant / lactating women	0%	
Chronically ill individual(s)	5%	
Disabled individual(s)	3%	
Female headed households	9%	

### Intentions

59%	planned to move to a different location in next 3 months
24%	reported needing financial support to return and restart in order to return safely to their area of origin

### Restrictions

100%	reported being able to leave the camp temporarily (e.g. to go to the market, for livelihood opportunities)
------	--

### Documentation

0%	reported that one or more member is missing one or more documents
n/a	reported that at least one of the members missing documents is an adult (18+)

### Top three missing documents reported by those households\*

n/a  
n/a  
n/a

### Top two reasons for not attending education\*

(of households with school-aged children not attending school)

n/a	n/a
n/a	n/a



## Access to information

### Top three information sources regarding area of origin\*

Personally visited	45%	
Security forces	19%	
Media	14%	

### Top three information needs\*

Security situation	69%	
Livelihood sources	68%	
Personal property condition	48%	



## Livelihoods

19% reported not having an income source

### Top three income sources\*

Unskilled labour	21%	
Pension	12%	
Low skilled service	11%	

### Top three reported livelihood coping strategies\*

None	79%	
Support from friends	16%	
Reduce spending	7%	



## Priority Needs

### Top 3 reported priority needs\*

Employment	48%	
Food	47%	
Summerization kits	39%	



## WASH

### Latrines

0%	reported access to public or communal latrines. Of those:
n/a	reported latrines were lockable from the inside
n/a	reported latrines had functioning lighting
n/a	reported latrines were gender segregated

### Top two most reported methods of waste removal

Collected	73%	
Communal bin	27%	

### Primary drinking water sources

95%	indoor water source
4%	outdoor water point

### Access to drinking water

36%	reported at least 24 consecutive hours without access to water in the month prior to the assessment
-----	---



## Shelter

32% reported flooding in their shelter in the previous year

### Top observed shelter type

Caravan	100%	<div></div>
	n/a	of tents have secondary cover

### Top reported needed basic items\*

Heating fuel	20%	
Winter clothes	8%	
Winter clothes	8%	

### Top reported needed winter item\*

Heater, clothes	99%	
-----------------	-----	--

### Electricity access

Average number of hours of electricity per day	16
--	----



## Food Security

### Reported access to food assistance

41%	reported having received Public Distribution System (PDS) assistance in the month prior to the assessment
97%	reported access to a market within walking distance

### Top two food consumption coping strategies\*

Buy less expensive food	29%	<div></div>
n/a	n/a	

\*Respondents could select multiple responses  
\*\*Insufficient sample size; fewer than five respondents







# IDP Camp Profile - Qoratu

Diyala, Iraq  
January 2018

Management agency: YAO  
Manager/Focal point: Afrasyaw Mahmood Salih  
Registration actor: Camp Management and CDO

## Summary

This profile provides an overview of conditions in Qoratu camp. Primary data was collected through household surveys on 29/01/2018. Households were randomly sampled to a 95% confidence level and a 10% margin of error, based on population figures provided by CCCM. In some cases, additional information from camp managers has been used to support findings.

## Camp Overview

# of individuals: 1157  
# of households: 255  
Date opened: 7/15/2015  
Occupied shelters: 324  
Planned shelters: 478  
Ongoing extension: no  
Camp area: 236,105m<sup>2</sup>

## Demographics

51% male / 49% female

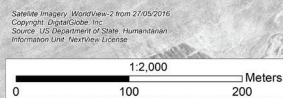
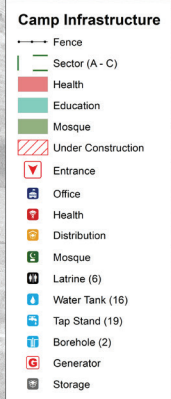
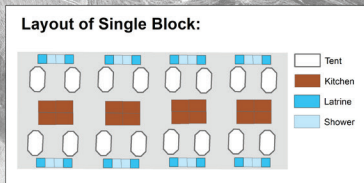
1% | Over 60 0%  
22% 18-59 21%  
9% 12-17 10%  
10% 6-11 10%  
9% 0-5 8%

## Location Map



## IDP Camp Map - Qoratu

Lat. 34° 32' 39.908" N Long. 45° 23' 26.923" E



## Sectoral Minimum Standards

		Target	Previous Round	Current Round	Achievement
CCCM	Average open area per household	Min. 30m <sup>2</sup>	460 m <sup>2</sup>	118 m <sup>2</sup>	●
Protection	% of IDPs registered on an individual basis (MODM/DDM)	100%	97%	95%	●
WASH	# of persons per latrine	Max. 20	3	4	●
	# of persons per shower	Max. 20	3	4	●
	Frequency of solid waste disposal	Min. weekly	n/a	Every day	●
Shelter	Average area covered per person	Min. 3.5m <sup>2</sup>	3.7 m <sup>2</sup>	3.7 m <sup>2</sup>	●
	Average number of individuals per shelter	Max. 5	5	4	●
Food	% households accessed Family Food Parcel or equivalent in previous month	100%	n/a*	43%	●
Health	Health services available on-site or within walking distance	Yes	yes	yes	●
Education	% of children aged 6-11 attending formal school	100%	58%	84%	●
	% of children aged 12-17 attending formal school	100%	83%	72%	●

\*Method of calculation for food distribution has changed from previous rounds

Targets based on minimum standards agreed with the CCCM Cluster, Iraq. Findings based on household-level data, enumerator field observations, and camp management documentation  
● Minimum standard reached, ● 50-99% of minimum standard reached, ● Less than 50% of minimum standard reached or not at all





# IDP Camp Profile - Qoratu

Diyala, Iraq  
January 2018



## Protection

### Vulnerable groups

Pregnant / lactating women	3%	
Chronically ill individual(s)	5%	
Disabled individual(s)	3%	
Female headed households	9%	

### Intentions

20%	planned to move to a different location in next 3 months
5%	reported needing financial support to return and restart in order to return safely to their area of origin

### Restrictions

100%	reported being able to leave the camp temporarily (e.g. to go to the market, for livelihood opportunities)
------	--

### Documentation

3%	reported that one or more member is missing one or more documents
n/a**	reported that at least one of the members missing documents is an adult (18+)

### Top three missing documents reported by those households\*

n/a\*\*  
n/a\*\*  
n/a\*\*

### Top two reasons for not attending education\*

(of households with school-aged children not attending school)

No school available	20%
Child is disinterested	20%



## Access to information

### Top three information sources regarding area of origin\*

From others who visited	94%	
Personally visited	5%	
Others who have not visited	2%	

### Top three information needs\*

Security situation	89%	
Livelihood sources	68%	
Basic services	46%	



## Livelihoods

3% reported not having an income source

### Top three income sources\*

Unskilled labour	32%	
Pension	13%	
Public sector	13%	

### Top three reported livelihood coping strategies\*

None	35%	
Sold assistance	30%	
Support from friends	16%	



## Priority Needs

### Top 3 reported priority needs\*

Food	82%	
Employment	46%	
Medical care	33%	



## WASH

### Latrines

0%	reported access to public or communal latrines. Of those:
n/a	reported latrines were lockable from the inside
n/a	reported latrines had functioning lighting
n/a	reported latrines were gender segregated

### Top two most reported methods of waste removal

Collected	100%	
n/a	n/a	

### Primary drinking water sources

82%	outdoor water point
18%	bottled water from the shop

### Access to drinking water

0%	reported at least 24 consecutive hours without access to water in the month prior to the assessment
----	---



## Shelter

3% reported flooding in their shelter in the previous year

### Top observed shelter type

Tent	100%	<div></div>
	97%	of tents have secondary cover

### Top reported needed basic items\*

Heating fuel	53%	
Fuel storage	27%	
Cooking stove	9%	

### Top reported needed winter item\*

Kerosene heater	94%	
-----------------	-----	--

### Electricity access

Average number of hours of electricity per day	21
--	----



## Food Security

### Reported access to food assistance

43%	reported having received Public Distribution System (PDS) assistance in the month prior to the assessment
99%	reported access to a market within walking distance

### Top two food consumption coping strategies\*

Buy less expensive food	84%	
Limit portions	16%	

\*Respondents could select multiple responses  
\*\*Insufficient sample size; fewer than five respondents

