



# IDP Camp Profile - Kabarto 2

Dahuk, Iraq  
December 2015

Management agency: BRHA  
Manager/Focal point: Nadyar Nazir Khalil  
Phone number: 7504575425  
Email: n/a  
Registration actor: BRHA

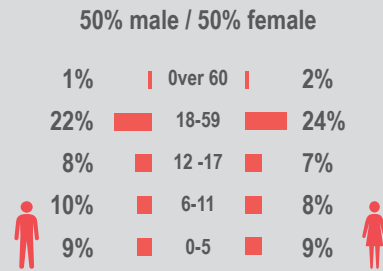
## Summary

This profile provides an overview of conditions in Kabarto 2 camp. Primary data was collected through household surveys on 12/10/2015. Households were randomly sampled to a 95% confidence and 10% margin of error, based on population figures provided by CCCM. In some cases, additional information from camp managers has been used to support findings. Round III of data collection was in September 2015.

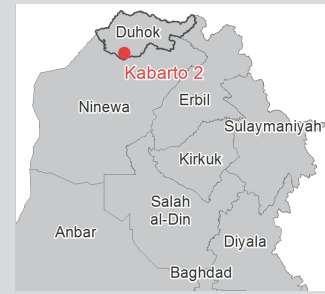
## Camp Overview

# of individuals: 14013  
# of households: 2409  
Date opened: 29/11/2014  
Accommodation: 3000  
Ongoing extension: no  
Planned capacity: n/a  
Camp area: 0.46 km<sup>2</sup>

## Demographics

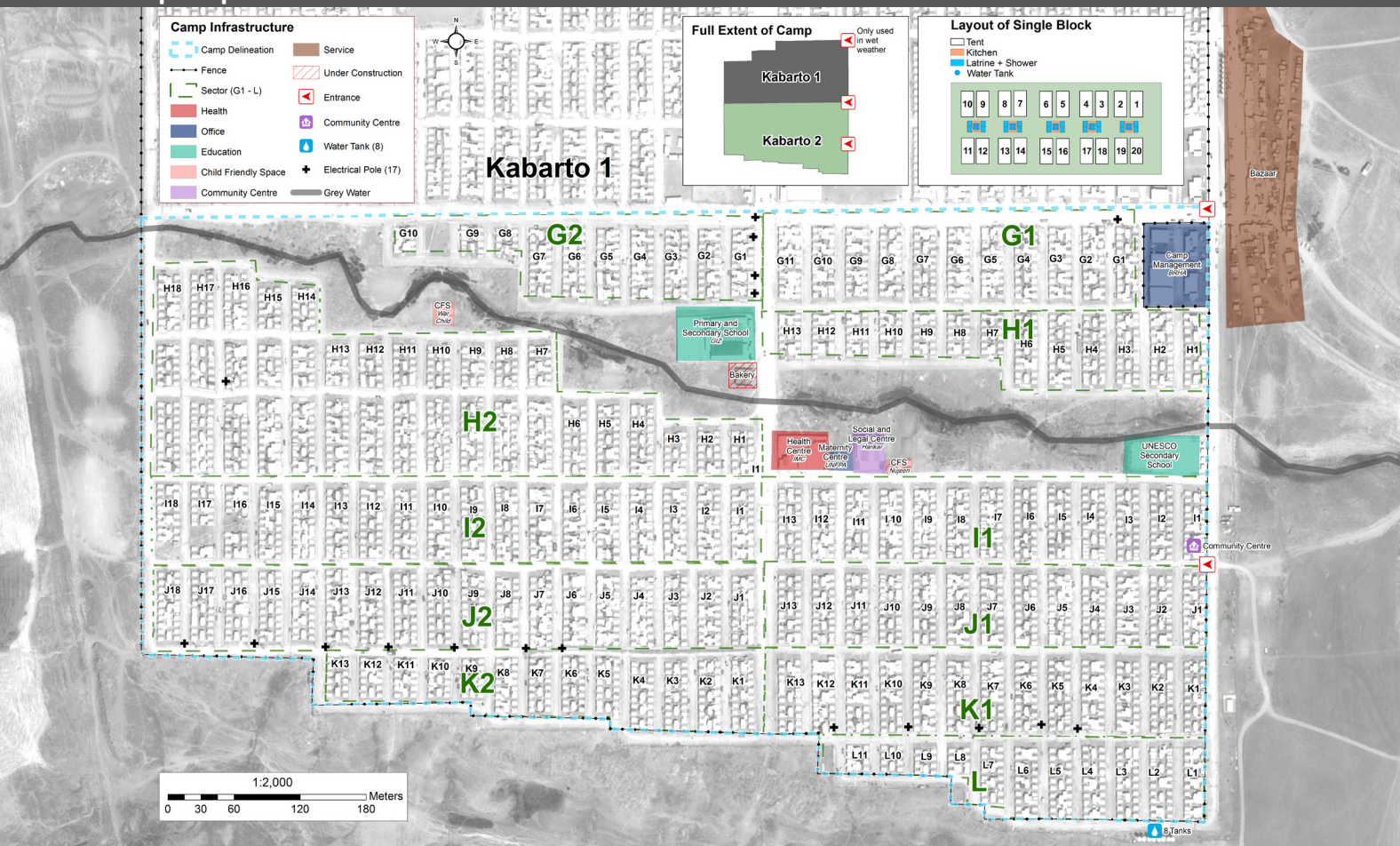


## Location Map



## IDP Camp Map - Kabarto 2

Lat. 36° 47' 8.675" N Long. 42° 51' 30.146" E



## Sectoral Minimum Standards

		Target	Previous Round	Current Round	Achievement
Education	% of children aged 6-11 attending formal school	100%	51%	73%	●
	% of children aged 12-17 attending formal school	100%	52%	52%	●
Food	% of households accessed Family Food Parcel or equivalent in the past month	100%	95%	84%	●
Health	Health services are available on-site or within walking distance	yes	yes	yes	●
CCCM	Average open area per household	min. 30m <sup>2</sup>	77m <sup>2</sup>	155 m <sup>2</sup>	●
Protection	% of IDPs registered on an individual basis (MODM/DDM)	100%	99%	98%	●
	% of households accessed shelter assistance since arrival at the camp	100%	100%	32%	●
	Average covered area per person	min. 3.5m <sup>2</sup>	3.7m <sup>2</sup>	3.1 m <sup>2</sup>	●
Shelter	Average number of individuals per tent	max.5	5	5	●
	# of persons per latrine	max. 20	5	5	●
WASH	# of persons per shower	max. 20	5	5	●
	Frequency of solid waste disposal at least weekly	min. weekly	yes	yes	●

Targets based on minimum standards agreed with the CCCM Cluster, Iraq. Findings based on household-level data, enumerator field observations, and camp management documentation  
● Minimum standard reached, ● More than 50% minimum standard reached, ● Less than 50% of minimum standard reached or not at all



CCCM CLUSTER  
SUPPORTING DISPLACED COMMUNITIES

For more information on this profile please contact:  
CCCM Cluster: iraqimo@ccmcluster.org  
REACH Initiative: melissa.meinhart@reach-initiative.org

REACH An initiative of  
IMPACT Initiatives  
ACTED and UNOSAT



# IDP Camp Profile - Kabarto 2

Dahuk, Iraq  
December 2015

Management agency: BRHA  
Manager/Focal point: Nadyar Nazir Khalil  
Phone number: 7504575425  
Email: n/a  
Registration actor: BRHA

## Shelter

### Top three observed shelter types\*

Tent on cement base	100%	<div></div>
n/a	n/a	
n/a	n/a	

\*Households were asked to select all shelter typologies within household.

### Winterization and household items

13%	reported a second fly sheet
0%	reported at least one stove or space heater
16%	reported at least one blanket per person
1	average number of carpets per HH
6	average number of mattresses per HH

### Hazards

25%	reported exposed electrical cables at site
-----	--

### Shelter Improvement

54%	reported making own improvements to their shelter
134 USD	average total reported cost of shelter improvements

\*Conversion rate: 1 USD = 1,106.37 IQD

### Households reporting flooding in past three months, by type

No flooding	92%	<div></div>
Flooding (temporary damage)	6%	<div></div>
Flooding (permanent damage)	1%	<div></div>

## Household Income

27%	reported a household income of under 10 USD in the past month (including aid, gifts or pension)
34%	reported humanitarian aid within top three sources of livelihood in past month

## Protection

### Family Separation

1%	reported hosting unaccompanied or separated minors
2%	reported that other family members intended to join them

### Vulnerable groups

Pregnant / lactating women	22%	<div></div>
Chronically ill individual(s)	4%	<div></div>
Disabled individual(s)	2%	<div></div>

### Intentions

0%	planned to move to a different location in next 3 months
----	--

### Restrictions

0%	reported entry or exit restrictions during daylight hours
----	---

### Documentation

11%	reported missing civil documents
-----	----------------------------------

## Food Security and Coping Strategies

### Reported access to food assistance

84%	accessed food assistance in past month
92%	received Public Distribution System (PDS) in past month

### Top three reported food consumption coping strategies

Cheaper Food	47%	<div></div>
Borrowed Food	23%	<div></div>
Smaller meals	20%	<div></div>

### Top three reported livelihood coping strategies

Bought food on credit	55%	<div></div>
Bought food on credit	55%	<div></div>
Sold HH assets	26%	<div></div>

## WASH

### Latrines and showers

100%	reported access to functional latrines
100%	reported access to functional showers

### Top three reported methods of waste removal

Collected	100%	<div></div>
n/a	n/a	
n/a	n/a	

### Primary reported drinking water source

0%	connection inside the home to collective water storage
100%	connection inside the home to private water storage
0%	communal water tap outside the shelter
0%	purchased from shop
0%	open well
0%	other source

### Access to water

1%	reported 24 consecutive hours without access to water in the past month
----	---

## Community Organisation

### IDP committees

83%	reported awareness of IDP committee(s)
-----	--

Of these, IDPs reported that camp committees were as follows:

100%	representative of camp composition
13%	included female representation
49%	had elected representative(s)
81%	had a complaints mechanism

### Access to fire-extinguishers

85%	reported awareness of available fire-extinguishers
-----	--