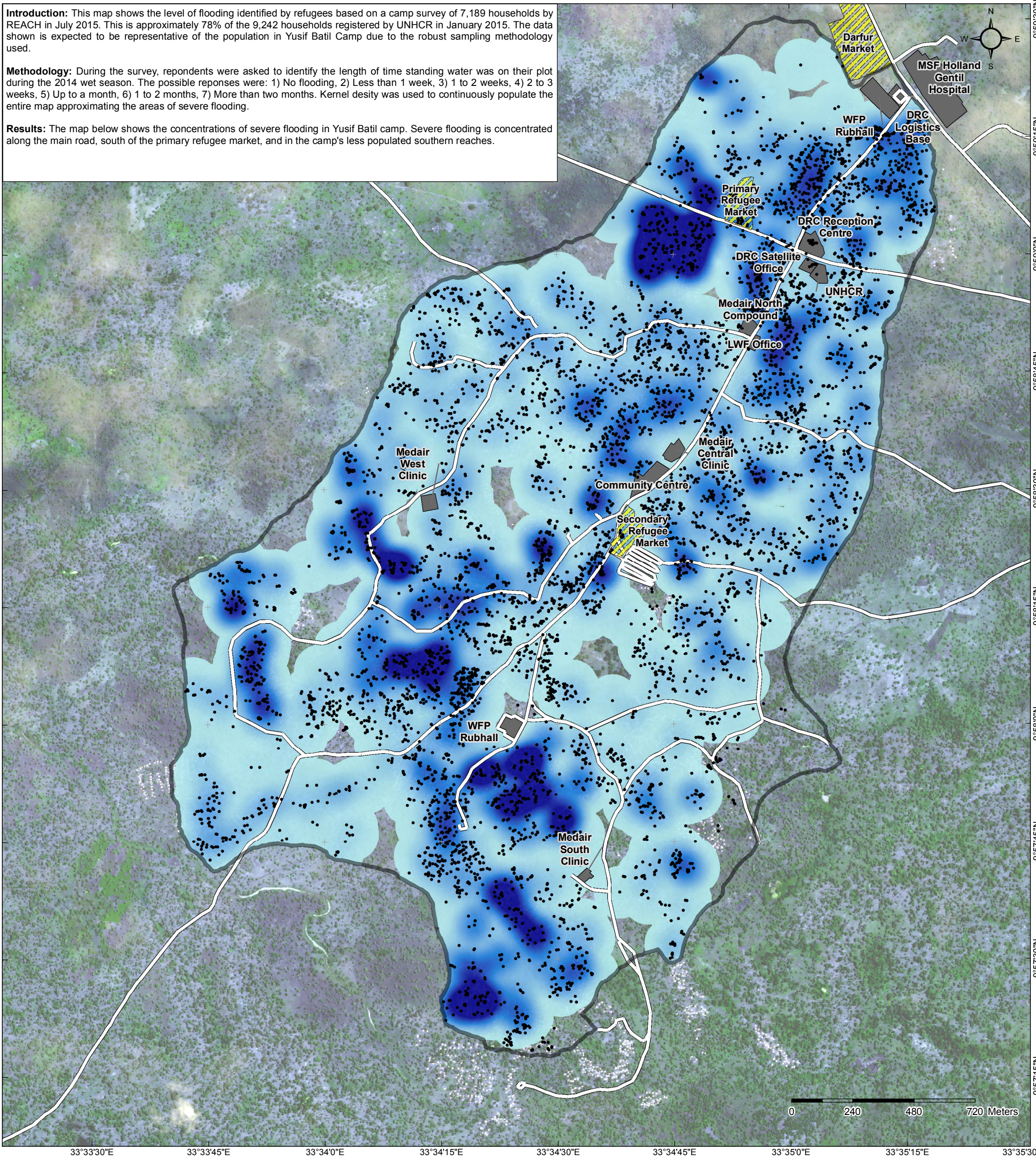


Introduction: This map shows the level of flooding identified by refugees based on a camp survey of 7,189 households by REACH in July 2015. This is approximately 78% of the 9,242 households registered by UNHCR in January 2015. The data shown is expected to be representative of the population in Yusif Batil Camp due to the robust sampling methodology used.

Methodology: During the survey, respondents were asked to identify the length of time standing water was on their plot during the 2014 wet season. The possible responses were: 1) No flooding, 2) Less than 1 week, 3) 1 to 2 weeks, 4) 2 to 3 weeks, 5) Up to a month, 6) 1 to 2 months, 7) More than two months. Kernel density was used to continuously populate the entire map approximating the areas of severe flooding.

Results: The map below shows the concentrations of severe flooding in Yusif Batil camp. Severe flooding is concentrated along the main road, south of the primary refugee market, and in the camp's less populated southern reaches.



- | | | |
|--|---|--|
| Time Area Was Flooded
<div style="display: flex; align-items: center;"> <div style="width: 20px; height: 10px; background-color: #007bff; margin-right: 5px;"></div> More than 2 Months
 <div style="width: 20px; height: 10px; background-color: #17a2b8; margin-right: 5px;"></div> 2 to 3 Weeks
 <div style="width: 20px; height: 10px; background-color: #90caf9; margin-right: 5px;"></div> Less than 1 Week </div> | Camp Features
<div style="display: flex; align-items: center;"> <div style="border: 1px solid black; width: 20px; height: 10px; margin-right: 5px;"></div> Camp Boundary
 <div style="border: 1px solid black; width: 20px; height: 10px; margin-right: 5px; background-color: #ccc;"></div> Compound Boundary </div> | <div style="display: flex; align-items: center;"> <div style="width: 20px; height: 10px; background: repeating-linear-gradient(45deg, transparent, transparent 2px, yellow 2px, yellow 4px); margin-right: 5px;"></div> Market
 <div style="border-bottom: 1px solid black; width: 20px; margin-right: 5px;"></div> Roads
 <div style="width: 5px; height: 5px; background-color: black; margin-right: 5px;"></div> Household Locations </div> |
|--|---|--|

Data sources: roads: PAE (2015); satellite imagery: WV-2 satellite (2013); administrative units, hydrology: OCHA COD; Basemap: Esri; All other features: REACH (2015).

Coordinate System: GCS WGS 1984
Contact: reach.mapping@impact-initiatives.org

Note: Data, designations and boundaries contained on this map are not warranted to be error-free and do not imply acceptance by the REACH partners, associates, donors or any other stakeholder mentioned on this map.

File: REACH_SSD_Map_YusifBatil_CAMP_FloodDuration_07JUN2015_A3

