



# IDP Camp Profile - Al Alam 1

Salah al'Din, Iraq  
January 2017

Management agency: UNHCR  
Manager/Focal point: Maan Abdullah Zahir  
Phone number: 7706640518  
Email: maana3221@gmail.com  
Registration actor: UNHCR

## Summary

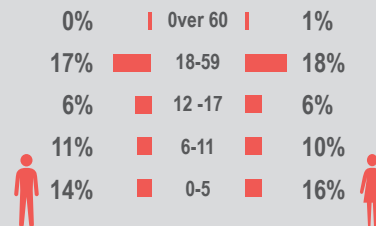
This profile provides an overview of conditions in Al Alam 1 camp. Primary data was collected through household surveys on 13-01-2017. This was the first round of data collection for this camp. Households were randomly sampled to a 95% confidence and 10% margin of error, based on population figures provided by CCCM. In some cases, additional information from camp managers has been used to support findings.

## Camp Overview

# of individuals: 1,500  
# of households: 500  
Date opened: 17-11-2016  
Occupied number: 494  
Ongoing extension: no  
Planned capacity: 500  
Camp area: 133,127m<sup>2</sup>

## Demographics

49% male / 51% female

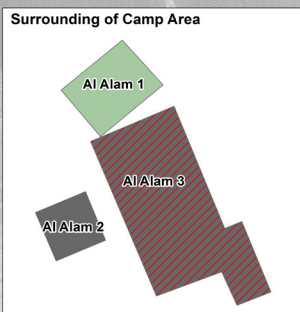


## Location Map

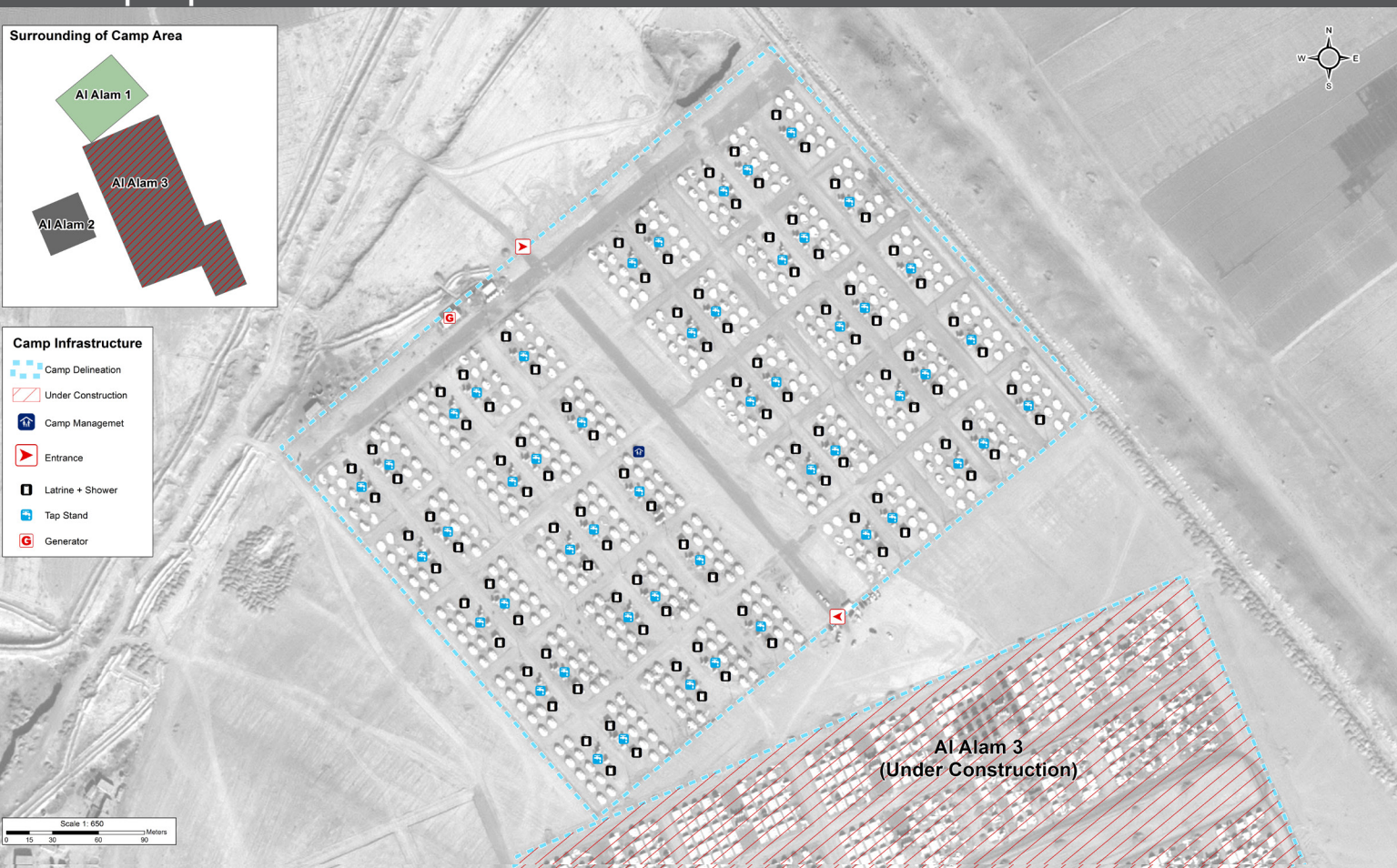
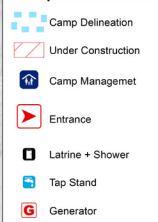


## IDP Camp Map - Al Alam 1

Lat. 35° 25' 55.395" N Long. 45° 35' 24.967" E



### Camp Infrastructure



## Sectoral Minimum Standards

		Target	Previous Round	Current Round	Achievement
Education	% of children aged 6-11 attending formal school	100%	n/a	4%	●
	% of children aged 12-17 attending formal school	100%	n/a	3%	●
Food	% of households accessed Family Food Parcel or equivalent in the past month	100%	n/a	92%	●
Health	Health services are available on-site or within walking distance	Yes	n/a	Yes	●
CCCM	Average open area per household	min. 30m <sup>2</sup>	n/a	237m <sup>2</sup>	●
Protection	% of IDPs registered on an individual basis (MODM/DDM)	100%	n/a	47%	●
Shelter	Average covered area per person	min. 3.5m <sup>2</sup>	n/a	4.8m <sup>2</sup>	●
	Average number of individuals per shelter	max.5	n/a	5	●
WASH	# of persons per latrine	max. 20	n/a	5	●
	# of persons per shower	max. 20	14	8	●
	Frequency of solid waste disposal at least weekly	Min. weekly	n/a	Yes	●

Targets based on minimum standards agreed with the CCCM Cluster, Iraq. Findings based on household-level data, enumerator field observations, and camp management documentation  
● Minimum standard reached, ● More than 50% minimum standard reached, ● Less than 50% of minimum standard reached or not at all





# IDP Camp Profile - Al Alam 1

Salah al'Din, Iraq  
January 2017

Management agency: UNHCR  
Manager/Focal point: Maan Abdullah Zahir  
Phone number: 7706640518  
Email: maana3221@gmail.com  
Registration actor: UNHCR

## Shelter

### Top observed shelter type

Tent 100%

### Top reported needed shelter items

Timber 87%

Sun shading net 77%

Tarpaulin 72%

### Top reported needed basic items

Blanket 79%

Mattresses 62%

Fuel for cooking 54%

### Top reported needed winter item

Clothes 54%

### Top reported needed summer item

Rechargeable fan 74%

## Food Security

### Reported access to food assistance

92% accessed food assistance in past month

97% received Public Distribution System (PDS) in past month

### Top three food consumption coping strategies

Cheaper 47%

Borrowed 28%

Less meals 6%

## WASH

### Latrines and showers

100% reported public or communal latrines

79% public/communal latrines lockable from the inside

6% public/communal latrines with functioning lighting

### Top three reported methods of waste removal

Collected 100%

n/a n/a

n/a n/a

### Reported drinking water sources

73% connection inside the home to collective water storage

0% connection inside the home to private water storage

26% communal water tap outside the shelter

### Access to water

24% reported 24 consecutive hours without access to water in the past month

## Community Organisation

### IDP committees

100% reported awareness of IDP committee(s)

### Complaints mechanism

4% made a complaint about conditions or assistance

## Protection

### Family Separation

0% reported hosting unaccompanied or separated minors

27% reported that other family members intended to join them

### Vulnerable groups

Pregnant / lactating women 28%

Chronically ill individual(s) 6%

Disabled individual(s) 4%

Female headed households 8%

### Intentions

7% planned to move to a different location in next 3 months

### Restrictions

100% reported being able to leave the camp temporarily (e.g. to go to the market, for livelihood opportunities)

## Livelihoods

44% reported as being economically inactive

### Top three income sources\*:

No livelihood 44%

Social care 35%

Pension 14%

\*Households were asked to select all income sources within household.

### Top three reported livelihood coping strategies

Debt 36%

Spent savings 35%

Sold assistance 27%