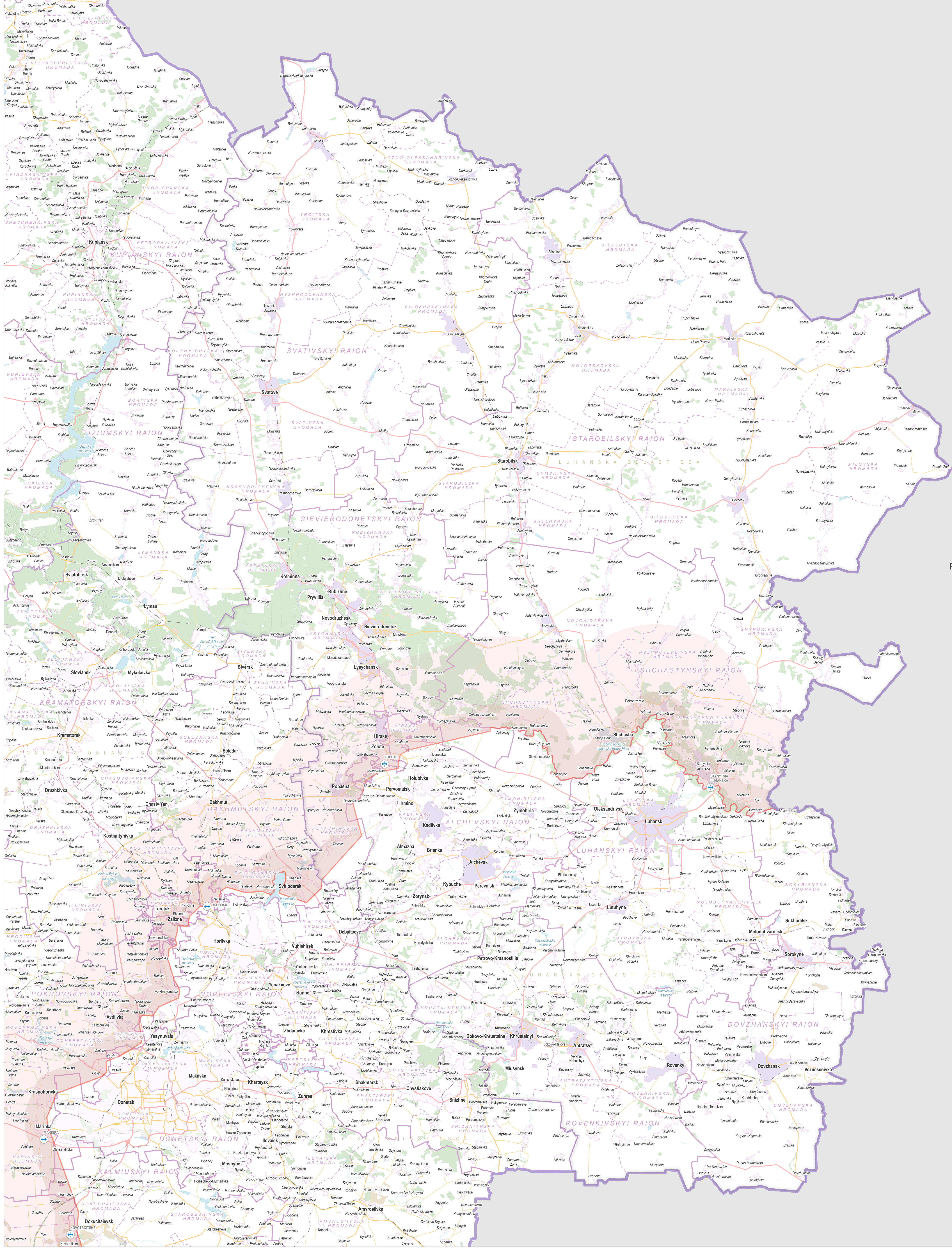
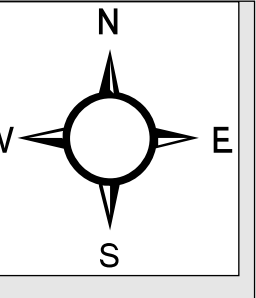


UKRAINE - Luhanska oblast

Reference map - May 2021

For Development Purpose Only
Production date: 7/1/2021



Russian Federation

Scale: 1:300,000
0 5 10 15 20 Km



- Conflict-related symbology**
- Line of contact (Presidential Decree № 32/2019)
 - 5 km area are from the line of contact
 - 20 km area are from the line of contact
 - Non-government controlled area
 - Checkpoint (State Border Guard Service of Ukraine)
- Transport network**
- Primary roads
 - Secondary roads
 - Tertiary roads
 - Railway
- Settlement type**
- Maripole
 - City
 - Urban-type village
 - Village

- Administrative boundaries**
- National
 - Oblast
 - Raion
 - Hromada
 - Settlement
 - Hromada centers in Luhanska oblast
- Land use**
- Water way
 - Water body
 - Forest
 - Quarry

Data sources:
Vegetation, hydrology, transport network, land use: ©OpenStreetMap contributors
Administrative boundary: OCHA
Line of contact: Presidential Decree №32/2019

Coordinate System: WGS 1984 UTM Zone 37N
Projection: Transverse Mercator

File:
AGORA_UKR_Map_REF_Luhanska_OverviewMap_31MAY2021_AQ_EN
Contact: reach.mapping@impact-initiatives.org

Note: Data, designations and boundaries contained on this map are not warranted to be error-free and do not imply acceptance by the AGORA partners, associated and/or donors mentioned on this map.

This map was created by AGORA, which is a partnership between ACTED/IMPACT and the United Nations Recovery and Peacebuilding Programme (UN RPP), which aims to support evidence-based recovery processes in Donetsk and Luhanska oblasts, with financial support from the European Union. Using an area-based approach, AGORA supports organizations implementing development projects, local government and civil society in planning recovery actions in conflict-affected cities and communities.

The United Nations Recovery and Peacebuilding Programme (UN RPP) is being implemented by four United Nations agencies: the United Nations Development Programme (UNDP), the UN Entity for Gender Equality and the Empowerment of Women (UN Women), the United Nations Population Fund (UNFPA) and the Food and Agriculture Organisation of the United Nations (FAO).

Twelve international partners support the Programme: the European Union (EU), the European Investment Bank (EIB) and the governments of Canada, Denmark, Germany, Japan, the Netherlands, Norway, Poland, Sweden, Switzerland & the UK.

