

IRAQ - Hamam Al Alil 1 Camp

General Infrastructure - Updated 13 February 2019



Camp Infrastructure

- Camp Delineation
- Fence
- Sector
- Block
- Health
- Office
- Distribution
- Education
- WASH Facility
- Service
- Storage
- Entrance
- Gate
- Community Centre

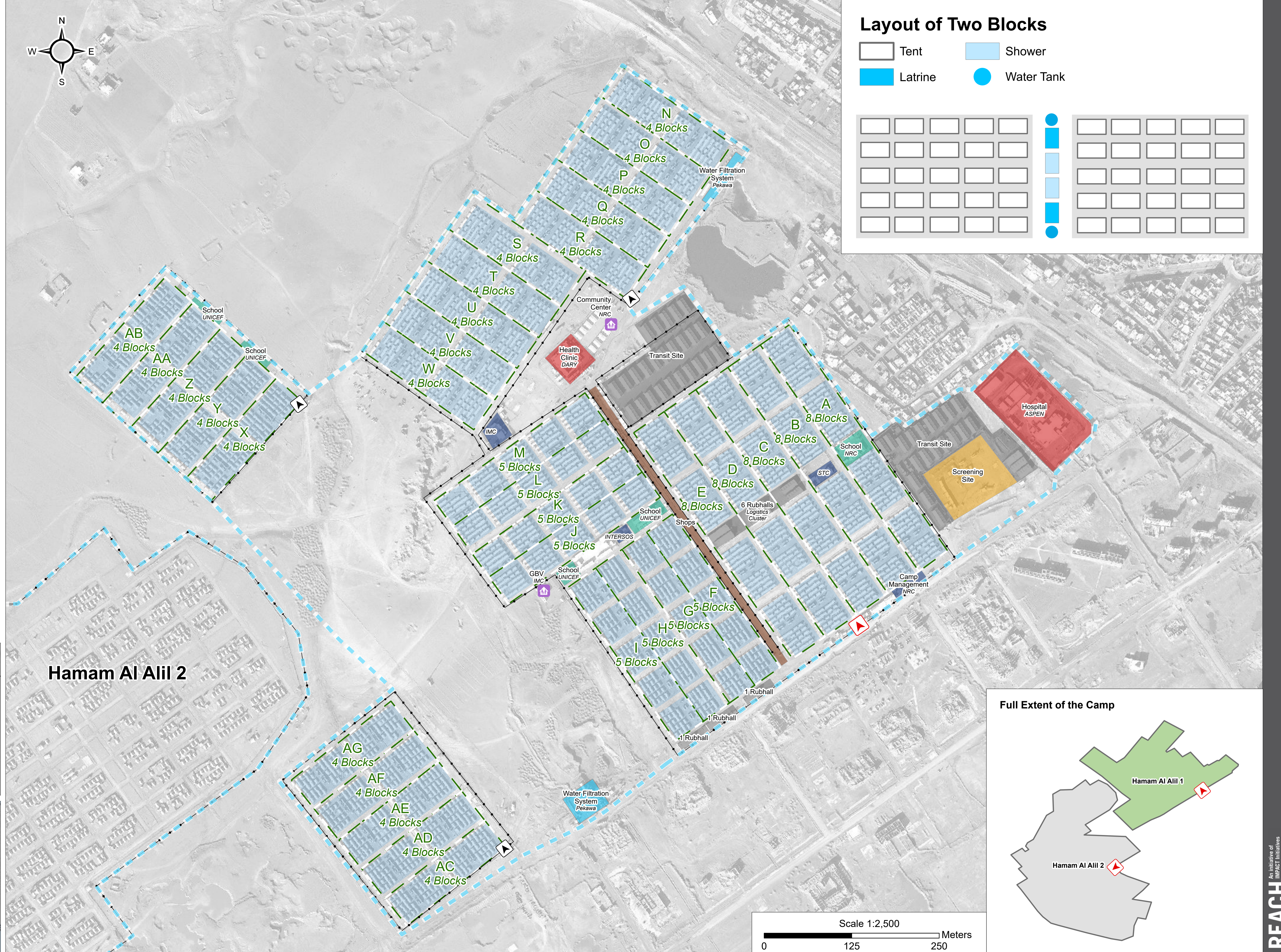
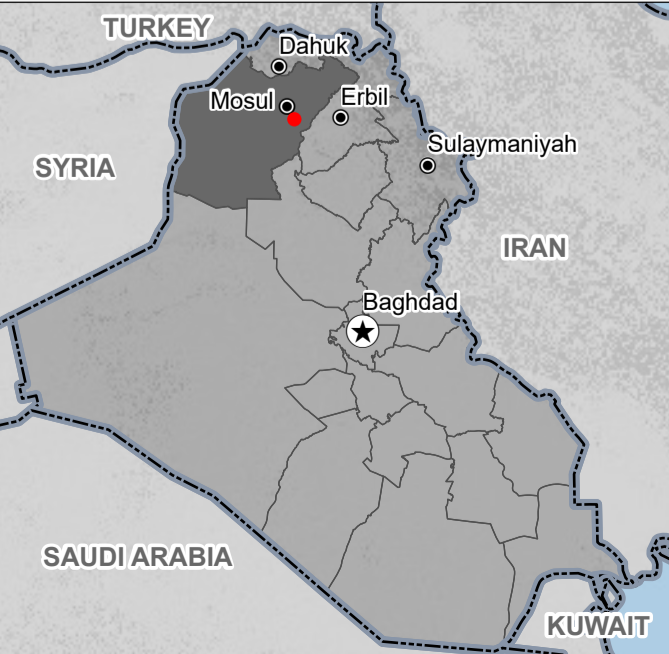
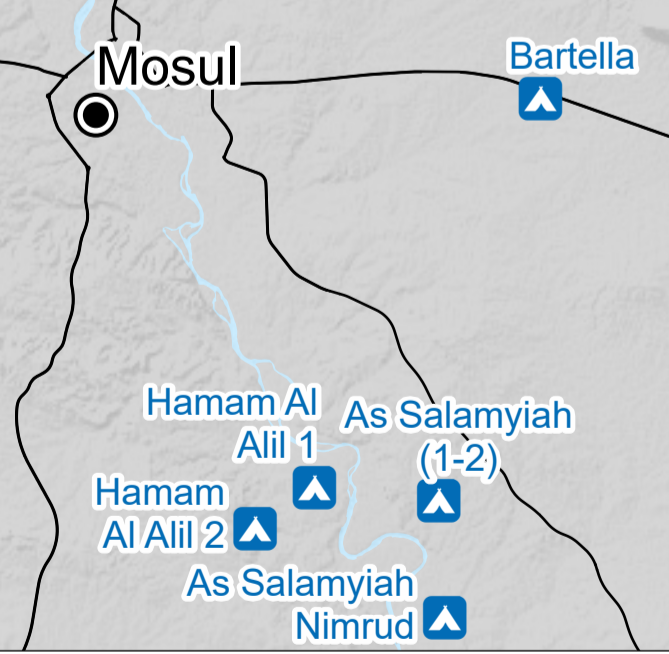
GPS Coordinates of Camp Location:
Longitude: 43° 14' 49.094" E (43.2469705)
Latitude: 36° 9' 43.322" N (36.1620339)

Thematic Data: 13/02/2019 - REACH
Administrative boundaries: GADM, OCHA

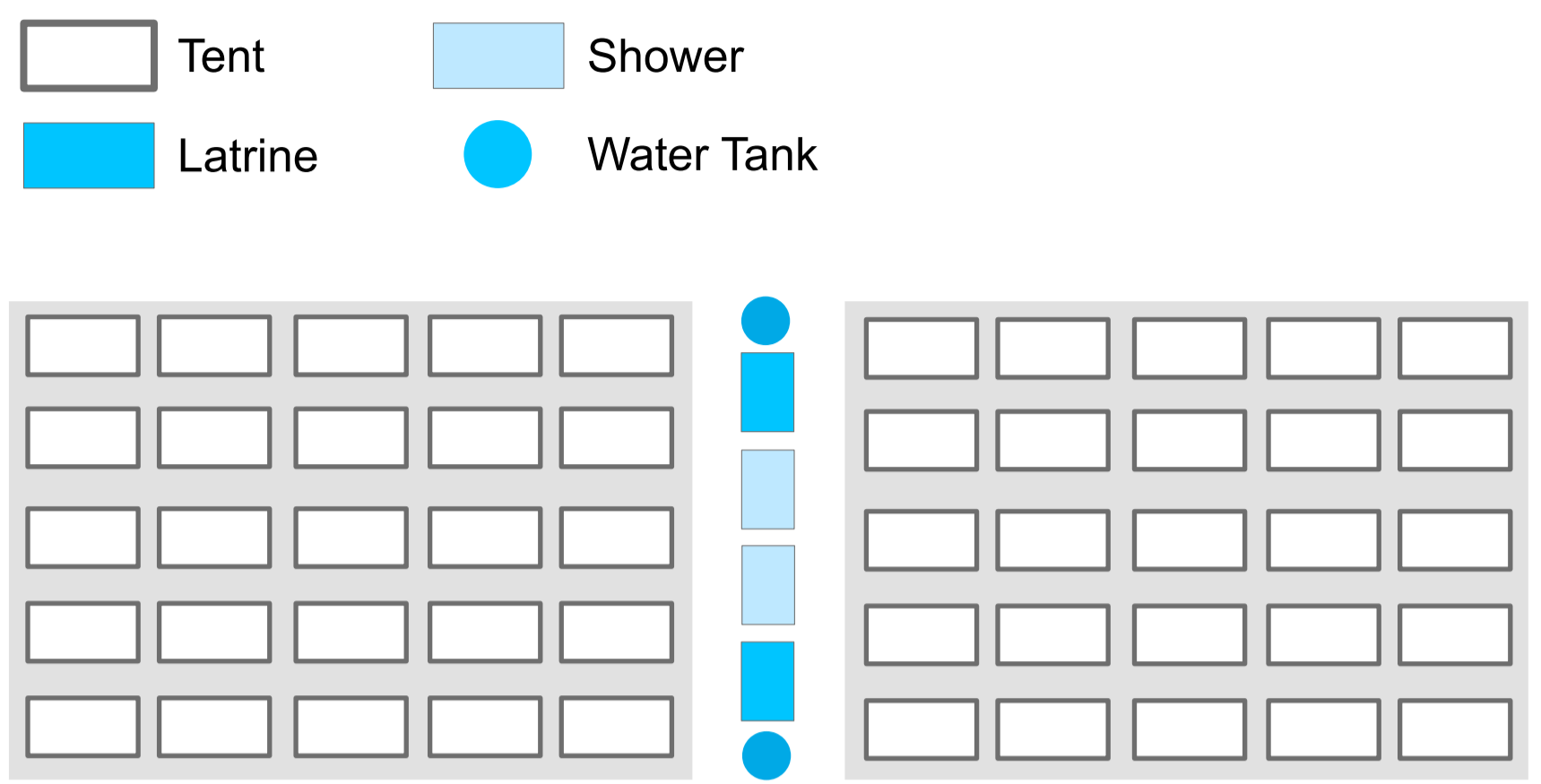
Satellite Imagery: WorldView-1 from 11/12/2018
Copyright: ©2018, DigitalGlobe, Inc
Source: US Department of State, Humanitarian Information Unit, NextView License

Projection: WGS 1984 UTM Zone 38N
Contact : iraq@reach-initiative.org
File: IRQ_Map_IDP_HamamAlAlil-1_14Feb2019

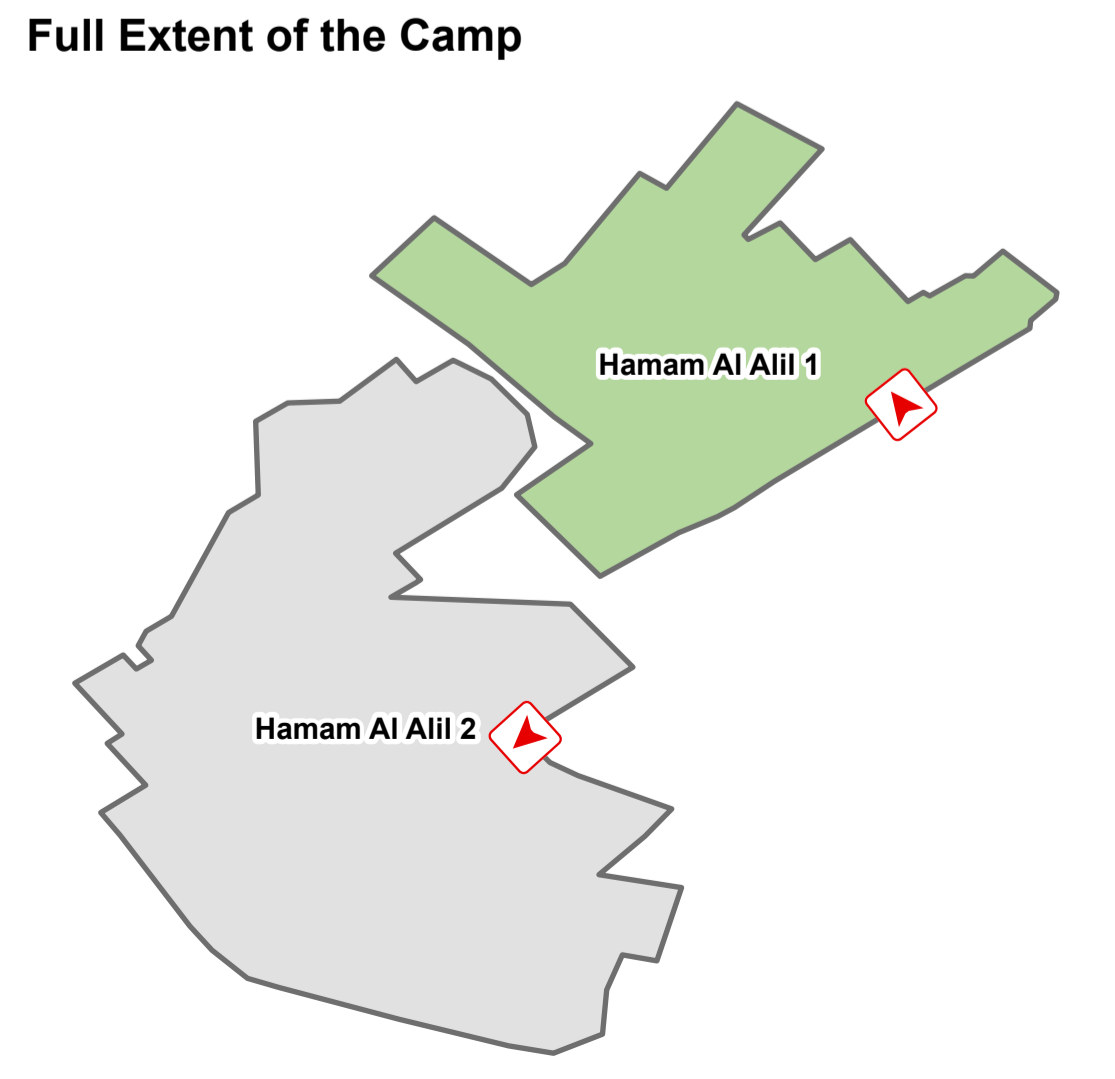
Note: Data, designations and boundaries contained on this map are not warranted to be error-free and do not imply acceptance by the REACH partners, associates or donors mentioned on this map.



Layout of Two Blocks



Hamam Al Alil 2



Scale 1:2,500
0 125 250 Meters