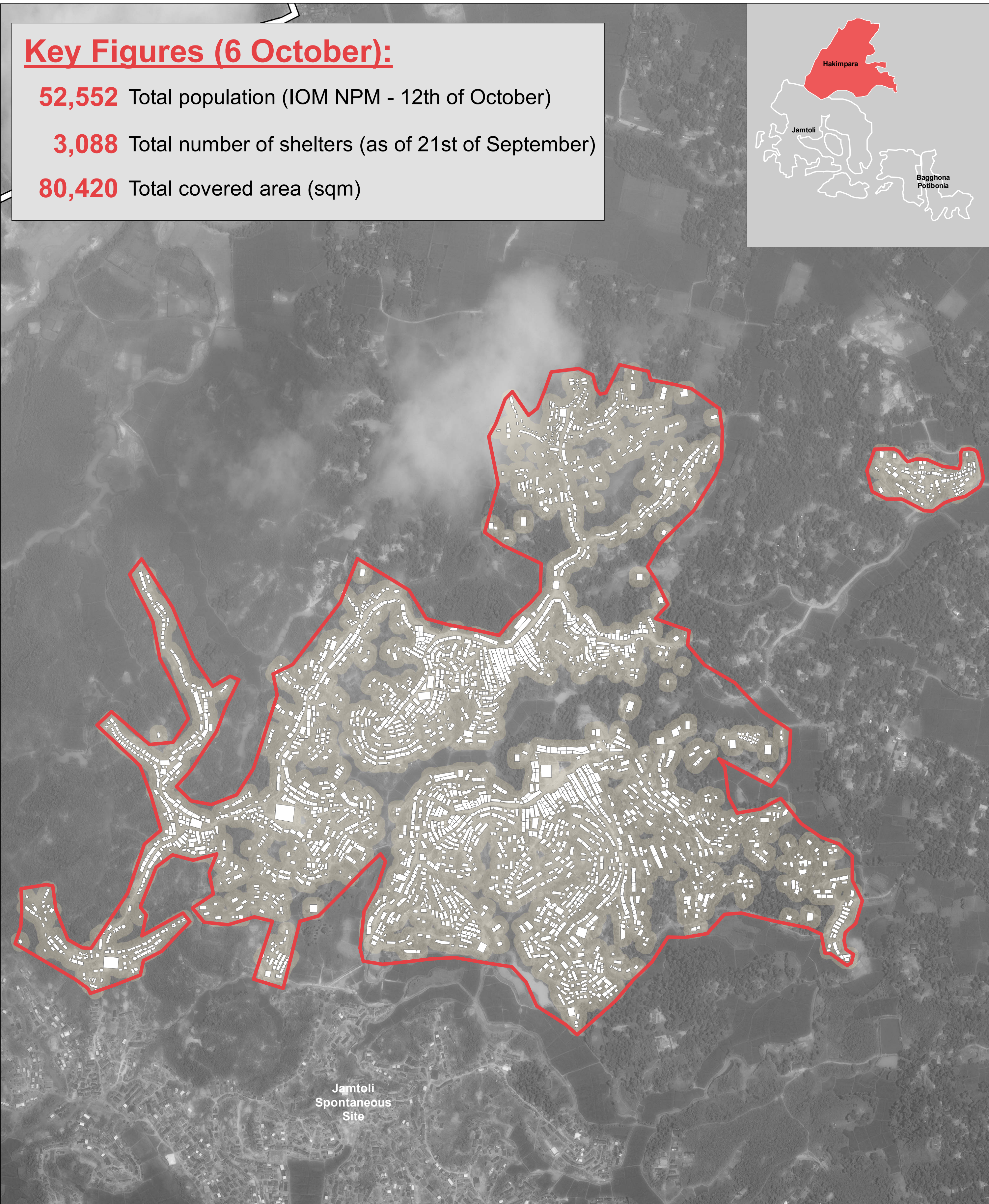
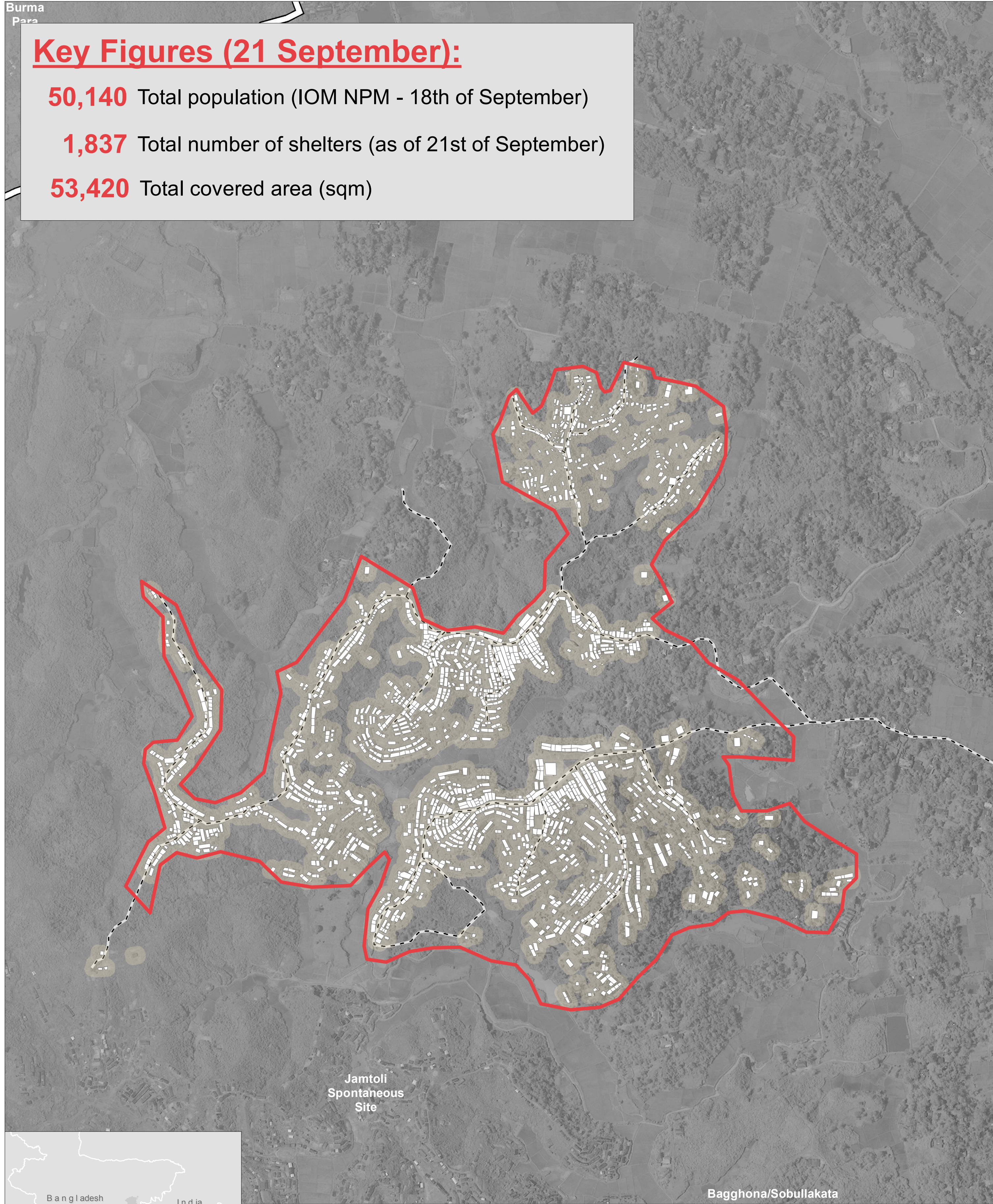


Key Figures (21 September):

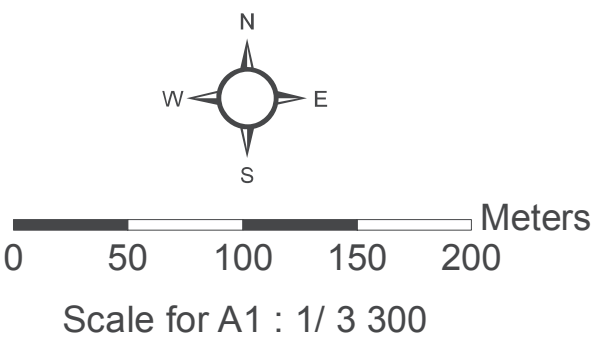
- 50,140** Total population (IOM NPM - 18th of September)
- 1,837** Total number of shelters (as of 21st of September)
- 53,420** Total covered area (sqm)

Key Figures (6 October):

- 52,552** Total population (IOM NPM - 12th of October)
- 3,088** Total number of shelters (as of 21st of September)
- 80,420** Total covered area (sqm)



- Settlement Zone
- Shelter Footprints
- Settled Area (approximate)
- Primary Footpaths



Data Sources:
Site Boundaries - ISCG
Shelter Footprints - REACH / UNOSAT
Satellite Imagery: WorldView-1 from 21 September 2017 & WorldView-3 from 6 October 2017
Copyright: ©2017 DigitalGlobe
Source: US Department of State, Humanitarian Information Unit, NextView License.

Coordinate System: WGS 1984 UTM Zone 46N
Projection: Transverse Mercator
File: reach_bgd_map_coxsbazar_Hakimpara_shelter_16102017_a1
Contact: reach.mapping@impact-initiatives.org

