



Bentiu Snapshot

Rubkona County, Unity State, South Sudan

Summary

Bentiu protection of civilians site (PoC) was established in December 2013 following the outbreak of violence.

The month of November has continued to see an increase of new arrivals, mainly from Leer, Rubkona and Koch counties, in November IOM has registered a total of 7122 individuals compared to 3803 during the month of October.

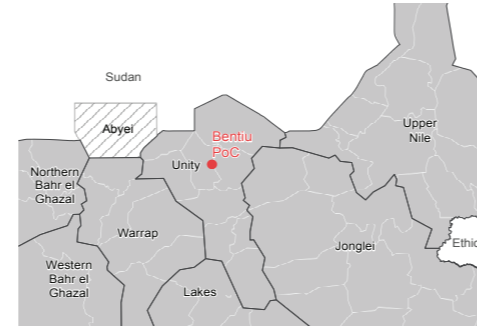
Data was provided by IOM (as of 03/12/2015) and camp manager (as of 06/12/2015) and spatial data was updated by REACH (as of 05/11/2015).

Site Overview

- Site management:** DRC, IOM, UNCHR, Internews
- Site population:** 129,339*
- Accommodation:** 11,251 structures
- Planned capacity:** 13,243 structures
- Site area:** 1,125,000 m²
- IDP County of origin**
 - 1st largest group Rubkona County
 - Other large groups Not specified

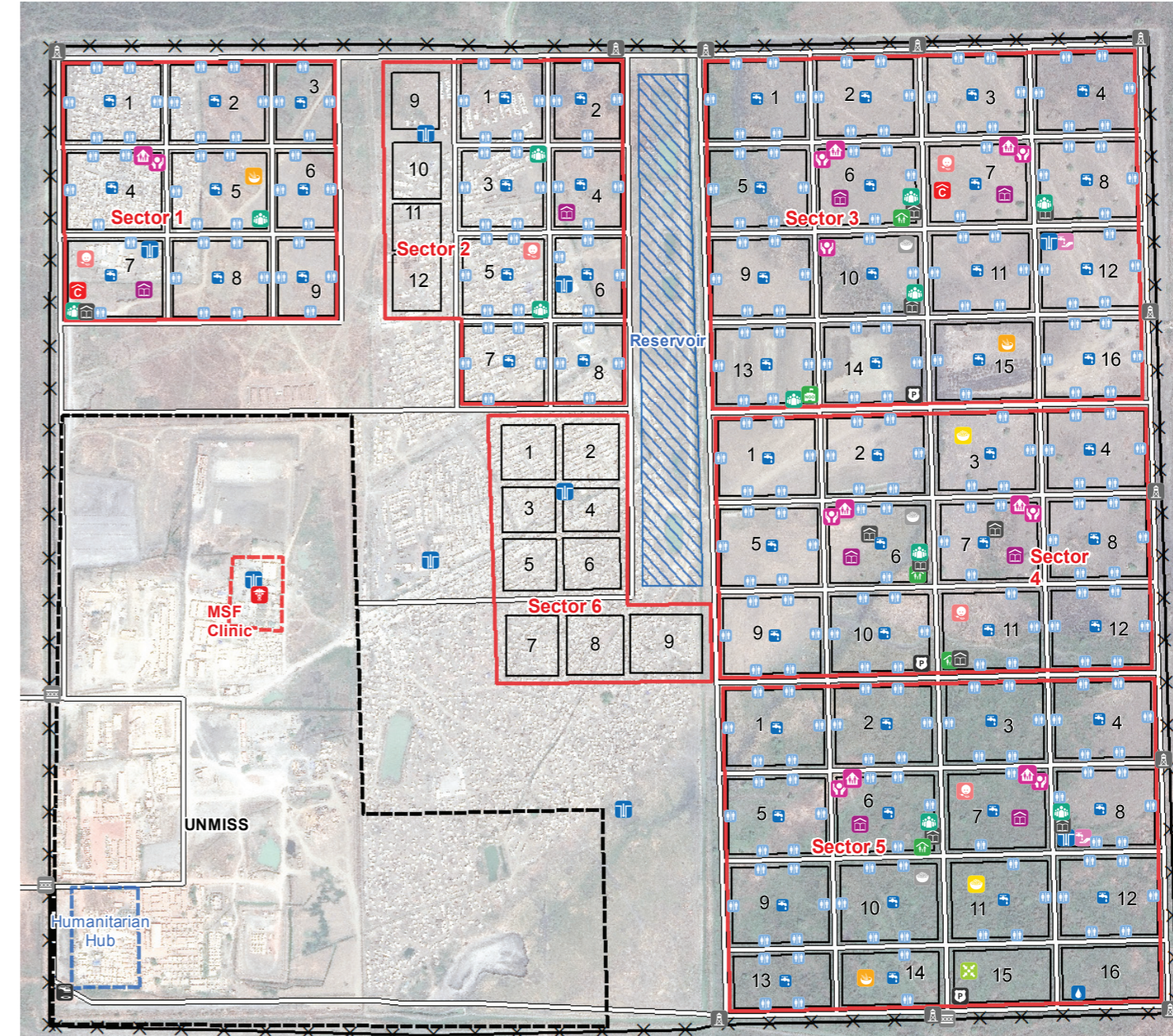
* Population figure provided by IOM (03/12/2015) differs from last MSF count (106 534 - week 48)

Location Map



Bentiu Site Map

Lat: 9.332 Long: 29.789



Implementing Agencies

- EDUCATION:** Interos, Mercy Corps, World Relief, Windle Trust and Unicef
- FOOD:** WFP, GAA, FAO and VSF
- HEALTH:** IOM, IRC, MSF, World Relief, MI, UNFPA, Unicef, WFO, Medair, Concern and Care
- PROTECTION:** UNHCR, IRC, NP, Unicef, Interos, HRSS, ICRC and UNFPA
- SHELTER / NFI:** Concern, UNHCR
- WASH:** Concern, UNICEF, Mercy Corps, IOM, MSF

CCCM Mechanisms

The following structures are in place:

- Community high committee
- Youth council
- Women committee
- Vulnerable's committee
- Traders' Union
- Block leaders

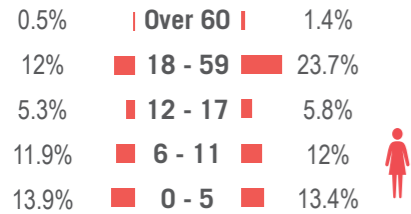
Reported Priority Needs

Priority needs were reported and ranked by camp management as:

- 1 Health (malaria)
- 2 Sanitation
- 3 Site congestion

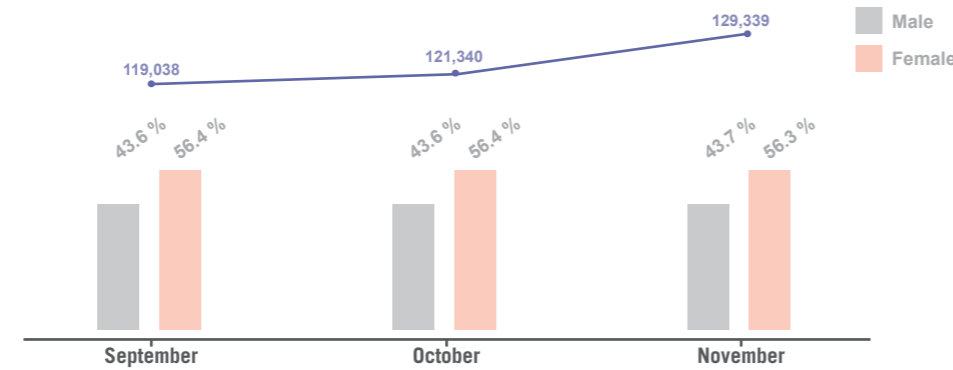
Demographics

43.7% male / 56.3% female**



** Population figure by IOM (as of 03 Dec 2015)

Demographic Trends***



*** Figure extracted from the DTM. No extra data / information was available.

Sectoral Overview

		Target****	Achieved	
Food	Food accessible on-site	Yes	Yes	●
	Markets physically accessible from site	Yes	Yes	●
Health	Health services are available on-site or within walking distance	Yes	Yes	●
CCCM	Average open area per person	min. 30 m ²	8.7 m ²	●
	% of families living in rakoobas/tukul	min 75%	More than 75%	●
Shelter	% of families living in makeshift shelters	0%	10%	●
	Average number of individuals per tent	max 5	11	●
	Average covered area per person*****	min 4.2 m ²	1.5 m ²	●
Water Sanitation	Liters of water available per person per day	min 15 L	N/A	●
	# of persons per latrine (m/f)	max 20	26	●
	# of persons per shower (m/f)	max 20	123	●

****Targets are based on minimum standards agreed with the CCCM Cluster ● Target reached, ● Target more than 50% reached, ● Target less than 50% or not at all reached. ● No data

***** Bentiu PoC shelters were designed to be 17.5 m²

WASH Facilities Water point Latrine/Shower Water treatment plant	Education Facilities Primary school ECD/CFS	Hygiene promoter tent Protection multipurpose building Unaccompanied minor (UAM) tukul Other FSL space	Site Structures Block Sector Contingency area Humanitarian Hub MSF Clinic Recreational pitch Reservoir UNMISS Berm
Health Facilities Secondary health center PHC/Breastfeeding center/ANC/PNC Nutrition center	Humanitarian Facilities Camp management Registration point Communication center Leadership/Committee tent Market Food distribution	Other Facilities Place of worship Gate UNIPOL Helipad Watch tower	