

## IDP Camp Profile - Al Hardania

# Salah Al Din, Iraq January 2018

**Management agency:** IRD  
**Manager/Focal point:** Hassan Thabet Hussein  
**Registration actor:** Camp Management

## Summary

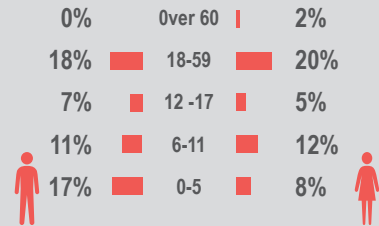
This profile provides an overview of conditions in Al Hardania camp. Primary data was collected through household surveys on 31/12/2017. Households were randomly sampled to a 95% confidence level and a 10% margin of error, based on population figures provided by CCCM. In some cases, additional information from camp managers has been used to support findings.

## Camp Overview

# of individuals: 821  
# of households: 150  
Date opened: 2/5/2015  
Occupied shelters: 150  
Planned shelters: 250  
Ongoing extension: no  
Camp area: 27,956m<sup>2</sup>

## Demographics

**53% male / 47% female**



## Location Map



## IDP Camp Map - Al Hardania

**Lat. 34° 4' 17.812" N Long. 44° 9' 20.402" E**



## Sectoral Minimum Standards

Sectoral Minimum Standards		Target	Previous Round	Current Round	Achievement
CCCM	Average open area per household	Min. 30m²	132 m²	156 m²	●
Protection	% of IDPs registered on an individual basis (MODM/DDM)	100%	100%	100%	●
WASH	# of persons per latrine	Max. 20	13	12	●
	# of persons per shower	Max. 20	13	12	●
	Frequency of solid waste disposal	Min. weekly	Every week	Every week	●
Shelter	Average area covered per person	Min. 3.5m²	3.7 m²	3.7 m²	●
	Average number of individuals per shelter	Max. 5	5	5	●
Food	% households accessed Family Food Parcel or equivalent in previous month	100%	n/a*	100%	●
Health	Health services available on-site or within walking distance	Yes	yes	yes	●
Education	% of children aged 6-11 attending formal school	100%	64%	93%	●
	% of children aged 12-17 attending formal school	100%	95%	93%	●

\*Method of calculation for food distribution has changed from previous rounds

Targets based on minimum standards agreed with the CCCM Cluster, Iraq. Findings based on household-level data, enumerator field observations, and camp management documentation



# IDP Camp Profile - Al Hardania

Salah Al Din, Iraq

January 2018



## Protection

### Vulnerable groups

Pregnant / lactating women	0%	
Chronically ill individual(s)	6%	■
Disabled individual(s)	1%	
Female headed households	20%	■

### Intentions

100%	planned to move to a different location in next 3 months
2%	reported needing financial support to return and restart in order to return safely to their area of origin

### Restrictions

98%	reported being able to leave the camp temporarily (e.g. to go to the market, for livelihood opportunities)
-----	--

### Documentation

0%	reported that one or more member is missing one or more documents
n/a	reported that at least one of the members missing documents is an adult (18+)

### Top three missing documents reported by those households\*

n/a  
n/a  
n/a

### Top two reasons for not attending education\*

(of households with school-aged children not attending school)

Child is disinterested	60%
Unable to afford education	20%



## Access to information

### Top three information sources regarding area of origin\*

From others who visited	71%	■
Security forces	15%	■
Personally visited	8%	■

### Top three information needs\*

Basic services	76%	■
Personal property condition	67%	■
Security situation	66%	■



## Livelihoods

10% reported not having an income source

### Top three income sources\*

Social care	49%	■
Pension	16%	■
Unskilled labour	11%	■

### Top three reported livelihood coping strategies\*

Sold assistance	98%	■
Spent savings	56%	■
Take on debt	52%	■



## Priority Needs

### Top 3 reported priority needs\*

Food	90%	■
Medical care	66%	■
Employment	51%	■



## WASH

### Latrines

100%	reported access to public or communal latrines. Of those:
100%	reported latrines were lockable from the inside
98%	reported latrines had functioning lighting
100%	reported latrines were gender segregated

### Top two most reported methods of waste removal

Collected	100%	■
n/a	n/a	

### Primary drinking water sources

100%	indoor water source
n/a	

### Access to drinking water

69%	reported at least 24 consecutive hours without access to water in the month prior to the assessment
-----	---



## Shelter

39% reported flooding in their shelter in the previous year

### Top observed shelter type

Tent	100%	<div></div>
	100%	of tents have secondary cover

### Top reported needed basic items\*

Winter clothes	2%	
Kitchen set	2%	
Light	2%	

### Top reported needed winter item\*

Kerosene heater	100%	■
-----------------	------	---

### Electricity access

Average number of hours of electricity per day	4
--	---



## Food Security

### Reported access to food assistance

100%	reported having received Public Distribution System (PDS) assistance in the month prior to the assessment
100%	reported access to a market within walking distance

### Top two food consumption coping strategies\*

Buy less expensive food	10%	■
Borrow food	3%	

\*Respondents could select multiple responses

\*\*Insufficient sample size; fewer than five respondents





# IDP Camp Profile - Al Sh'hamah

Salah Al Din, Iraq  
January 2018

Management agency: Government  
Manager/Focal point: Huseen Ahmed Khalaf  
Registration actor: Camp Management

## Summary

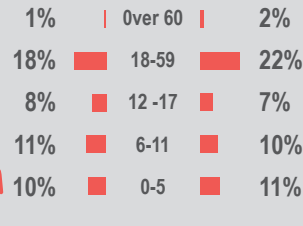
This profile provides an overview of conditions in Al Sh'hamah camp. Primary data was collected through household surveys on 4/1/2018. Households were randomly sampled to a 95% confidence level and a 10% margin of error, based on population figures provided by CCCM. In some cases, additional information from camp managers has been used to support findings.

## Camp Overview

# of individuals: 3247  
# of households: 480  
Date opened: 1/4/2017  
Occupied shelters: 600  
Planned shelters: 1500  
Ongoing extension: no  
Camp area: 161,353m<sup>2</sup>

## Demographics

47% male / 53% female

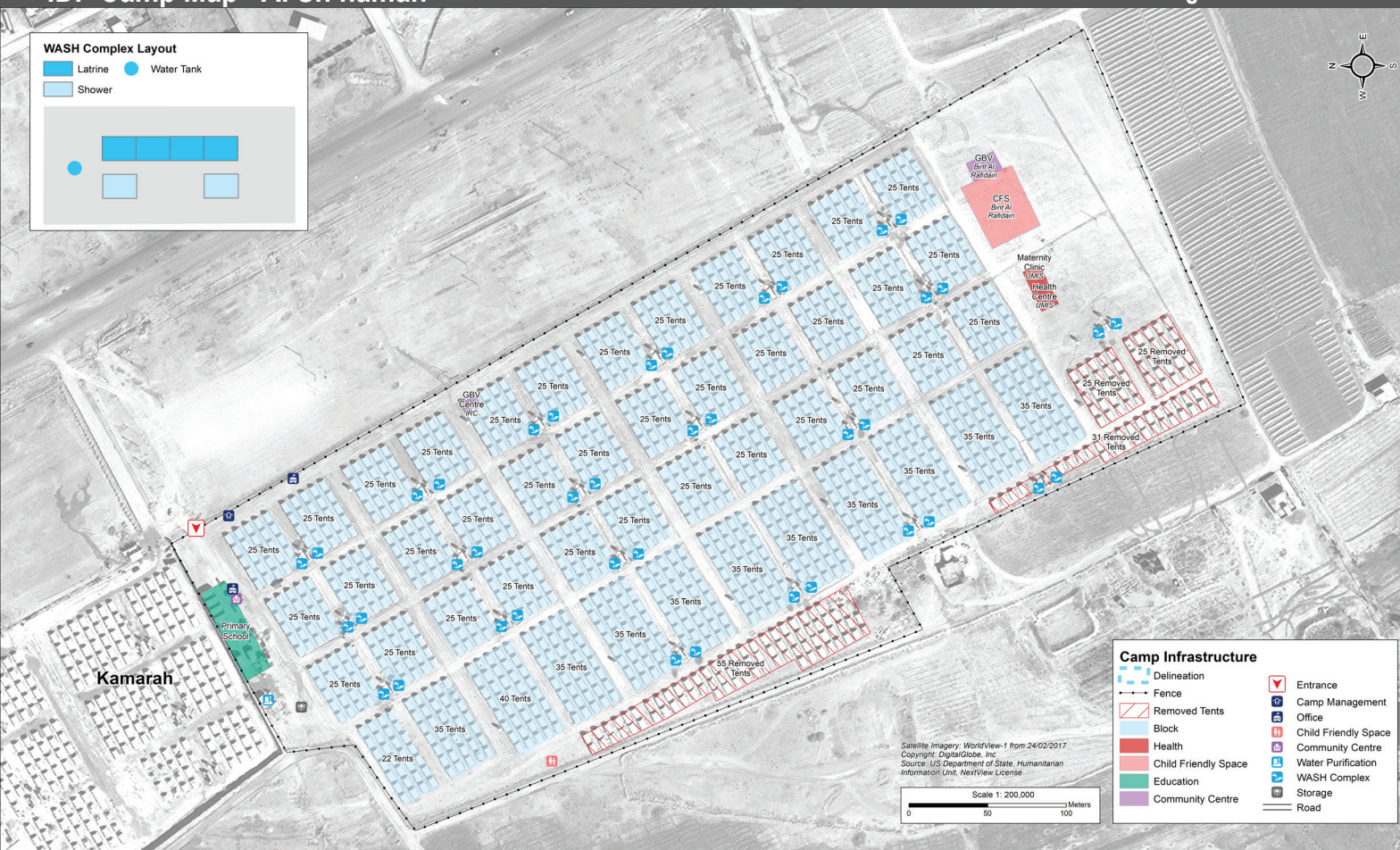


## Location Map



## IDP Camp Map - Al Sh'hamah

Lat. 34° 41' 26.603" N Long. 43° 37' 8.739" E



## Sectoral Minimum Standards

		Target	Previous Round	Current Round	Achievement
CCCM	Average open area per household	Min. 30m <sup>2</sup>	254 m <sup>2</sup>	271 m <sup>2</sup>	●
Protection	% of IDPs registered on an individual basis (MODM/DDM)	100%	66%	86%	●
WASH	# of persons per latrine	Max. 20	16	19	●
	# of persons per shower	Max. 20	32	39	●
	Frequency of solid waste disposal	Min. weekly	Every day	Every day	●
Shelter	Average area covered per person	Min. 3.5m <sup>2</sup>	3.7 m <sup>2</sup>	2.6 m <sup>2</sup>	●
	Average number of individuals per shelter	Max. 5	6	4	●
Food	% households accessed Family Food Parcel or equivalent in previous month	100%	n/a*	37%	●
Health	Health services available on-site or within walking distance	Yes	yes	yes	●
Education	% of children aged 6-11 attending formal school	100%	70%	40%	●
	% of children aged 12-17 attending formal school	100%	86%	30%	●

\*Method of calculation for food distribution has changed from previous rounds

Targets based on minimum standards agreed with the CCCM Cluster, Iraq. Findings based on household-level data, enumerator field observations, and camp management documentation  
● Minimum standard reached, ● 50-99% of minimum standard reached, ● Less than 50% of minimum standard reached or not at all





# IDP Camp Profile - Al Sh'hamah

Salah Al Din, Iraq

January 2018



## Protection

### Vulnerable groups

Pregnant / lactating women	4%	
Chronically ill individual(s)	11%	
Disabled individual(s)	7%	
Female headed households	28%	

### Intentions

47%	planned to move to a different location in next 3 months
12%	reported needing financial support to return and restart in order to return safely to their area of origin

### Restrictions

100%	reported being able to leave the camp temporarily (e.g. to go to the market, for livelihood opportunities)
------	--

### Documentation

8%	reported that one or more member is missing one or more documents
50%	reported that at least one of the members missing documents is an adult (18+)

### Top three missing documents reported by those households\*

ID card	43%
Citizenship certificate	43%
PDS card	29%

### Top two reasons for not attending education\*

(of households with school-aged children not attending school)

Child is disinterested	58%
Unable to afford education	17%



## Access to information

### Top three information sources regarding area of origin\*

Government	41%	
Security forces	41%	
Media	19%	

### Top three information needs\*

Security situation	100%	
Personal property condition	95%	
Basic services	82%	



## Livelihoods

4% reported not having an income source

### Top three income sources\*

Government aid	83%	
Humanitarian aid	82%	
Gifts	37%	

### Top three reported livelihood coping strategies\*

Sold assistance	64%	
Spent savings	39%	
Reduce spending	18%	



## Priority Needs

### Top 3 reported priority needs\*

Food	78%	
Employment	65%	
Clothing	49%	



## WASH

### Latrines

100%	reported access to public or communal latrines. Of those:
100%	reported latrines were lockable from the inside
69%	reported latrines had functioning lighting
100%	reported latrines were gender segregated

### Top two most reported methods of waste removal

Collected	100%	
n/a	n/a	

### Primary drinking water sources

100%	outdoor water point
n/a	

### Access to drinking water

10%	reported at least 24 consecutive hours without access to water in the month prior to the assessment
-----	---



## Shelter

2% reported flooding in their shelter in the previous year

### Top observed shelter type

Tent	100%	<div></div>
	89%	of tents have secondary cover

### Top reported needed basic items\*

Heating fuel	89%	
Fuel storage	73%	
Winter clothes	65%	

### Top reported needed winter item\*

Winter clothes	97%	
----------------	-----	--

### Electricity access

Average number of hours of electricity per day	4
--	---



## Food Security

### Reported access to food assistance

37%	reported having received Public Distribution System (PDS) assistance in the month prior to the assessment
100%	reported access to a market within walking distance

### Top two food consumption coping strategies\*

Buy less expensive food	55%	
Borrow food	36%	

\*Respondents could select multiple responses

\*\*Insufficient sample size; fewer than five respondents





# IDP Camp Profile - Al Alam 1, 2 & 3

Salah Al Din, Iraq  
January 2018

Management agency: DRC and MODM  
Manager/Focal point: Maan Daher Abdullah  
Registration actor: Camp Management

## Summary

This profile provides an overview of conditions in Al Alam 1, 2 & 3 camp. Primary data was collected through household surveys on 5/1/2018. Households were randomly sampled to a 95% confidence level and a 10% margin of error, based on population figures provided by CCCM. In some cases, additional information from camp managers has been used to support findings.

## Camp Overview

# of individuals: 6449  
# of households: 1098  
Date opened: 11/3/2016  
Occupied shelters: 1700  
Planned shelters: 5050  
Ongoing extension: yes  
Camp area: 720,325m<sup>2</sup>

## Demographics

50% male / 50% female

1% | Over 60 | 1%  
15% | 18-59 | 19%  
9% | 12-17 | 6%  
14% | 6-11 | 10%  
11% | 0-5 | 13%

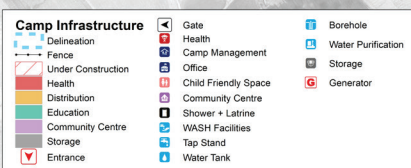


## Location Map



## IDP Camp Map - Al Alam 1, 2 & 3

Lat. 34° 49' 36.671" N Long. 43° 34' 56.839" E



## Sectoral Minimum Standards

		Target	Previous Round	Current Round	Achievement
CCCM	Average open area per household	Min. 30m <sup>2</sup>	318 m <sup>2</sup>	549 m <sup>2</sup>	●
Protection	% of IDPs registered on an individual basis (MODM/DDM)	100%	43%	79%	●
WASH	# of persons per latrine	Max. 20	16	12	●
	# of persons per shower	Max. 20	19	12	●
	Frequency of solid waste disposal	Min. weekly	Every day	Every day	●
Shelter	Average area covered per person	Min. 3.5m <sup>2</sup>	n/a	3.8 m <sup>2</sup>	●
	Average number of individuals per shelter	Max. 5	7	5	●
Food	% households accessed Family Food Parcel or equivalent in previous month	100%	n/a*	79%	●
Health	Health services available on-site or within walking distance	Yes	yes	yes	●
Education	% of children aged 6-11 attending formal school	100%	59%	60%	●
	% of children aged 12-17 attending formal school	100%	67%	50%	●

\*Method of calculation for food distribution has changed from previous rounds

Targets based on minimum standards agreed with the CCCM Cluster, Iraq. Findings based on household-level data, enumerator field observations, and camp management documentation  
● Minimum standard reached, ● 50-99% of minimum standard reached, ● Less than 50% of minimum standard reached or not at all





# IDP Camp Profile - Al Alam 1, 2 & 3

Salah Al Din, Iraq

January 2018



## Protection

### Vulnerable groups

Pregnant / lactating women	4%	
Chronically ill individual(s)	6%	
Disabled individual(s)	5%	
Female headed households	19%	

### Intentions

46%	planned to move to a different location in next 3 months
21%	reported needing financial support to return and restart in order to return safely to their area of origin

### Restrictions

100%	reported being able to leave the camp temporarily (e.g. to go to the market, for livelihood opportunities)
------	--

### Documentation

13%	reported that one or more member is missing one or more documents
69%	reported that at least one of the members missing documents is an adult (18+)

### Top three missing documents reported by those households\*

ID card	54%
PDS card	38%
MODM letter	23%

### Top two reasons for not attending education\*

(of households with school-aged children not attending school)

Child is disinterested	29%
Unable to afford education	20%



## Access to information

### Top three information sources regarding area of origin\*

From others who visited	61%
Personally visited	23%
Security forces	15%

### Top three information needs\*

Personal property condition	76%
Basic services	76%
Security situation	54%



## Livelihoods

3% reported not having an income source

### Top three income sources\*

Government aid	79%
Humanitarian aid	78%
Gifts	39%

### Top three reported livelihood coping strategies\*

Sold assistance	71%
Spent savings	30%
Take on debt	23%



## Priority Needs

### Top 3 reported priority needs\*

Food	74%
Employment	64%
Clothing	48%



## WASH

### Latrines

100%	reported access to public or communal latrines. Of those:
100%	reported latrines were lockable from the inside
82%	reported latrines had functioning lighting
100%	reported latrines were gender segregated

### Top two most reported methods of waste removal

Collected	100%
n/a	n/a

### Primary drinking water sources

100%	outdoor water point
n/a	

### Access to drinking water

6%	reported at least 24 consecutive hours without access to water in the month prior to the assessment
----	---



## Shelter

20% reported flooding in their shelter in the previous year

### Top observed shelter type

Tent	100%
89%	of tents have secondary cover

### Top reported needed basic items\*

Winter clothes	66%
Fuel storage	58%
Heating fuel	47%

### Top reported needed winter item\*

Winter clothes	95%
----------------	-----

### Electricity access

Average number of hours of electricity per day	19
--	----



## Food Security

### Reported access to food assistance

79%	reported having received Public Distribution System (PDS) assistance in the month prior to the assessment
100%	reported access to a market within walking distance

### Top two food consumption coping strategies\*

Buy less expensive food	58%
Borrow food	40%

\*Respondents could select multiple responses

\*\*Insufficient sample size; fewer than five respondents





# IDP Camp Profile - Basateen Al Sheuokh

Salah Al Din, Iraq  
January 2018

Management agency: CAOFSR  
Manager/Focal point: Abdalgafar Hamad Mahmud  
Registration actor: Camp Management

## Summary

This profile provides an overview of conditions in Basateen Al Sheuokh camp. Primary data was collected through household surveys on 20/12/2017. Households were randomly sampled to a 95% confidence level and a 10% margin of error, based on population figures provided by CCCM. In some cases, additional information from camp managers has been used to support findings.

## Camp Overview

# of individuals: 2240  
# of households: 429  
Date opened: 10/1/2017  
Occupied shelters: 607  
Planned shelters: 1000  
Ongoing extension: no  
Camp area: 333,990m<sup>2</sup>

## Demographics

49% male / 51% female

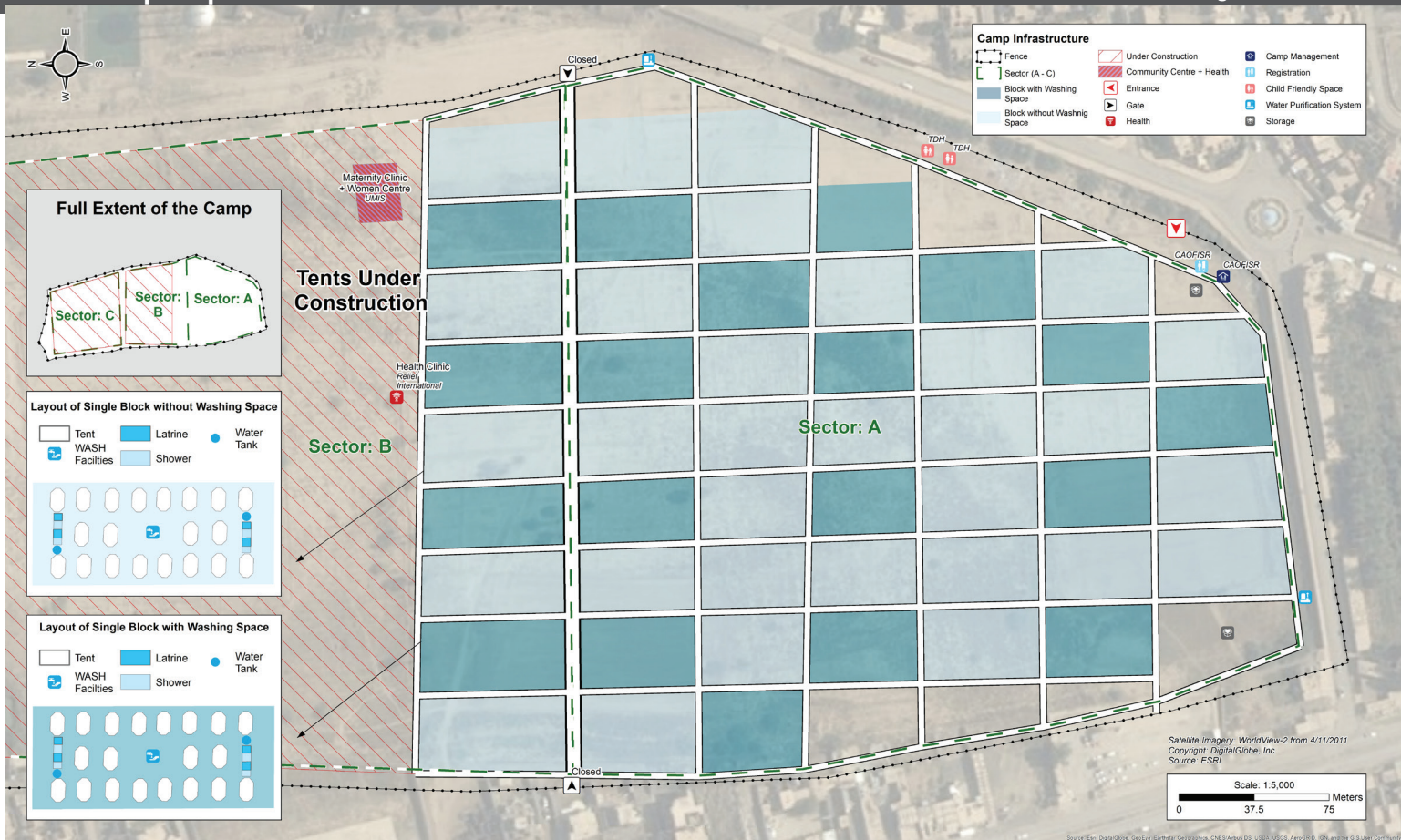
1% | Over 60 | 2%  
18% | 18-59 | 18%  
7% | 12-17 | 10%  
11% | 6-11 | 8%  
12% | 0-5 | 13%

## Location Map



## IDP Camp Map - Basateen Al Sheuokh

Lat. 35° 31' 22.8" N Long. 43° 14' 2.4" E



## Sectoral Minimum Standards

		Target	Previous Round	Current Round	Achievement
CCCM	Average open area per household	Min. 30m <sup>2</sup>	n/a	336 m <sup>2</sup>	●
Protection	% of IDPs registered on an individual basis (MODM/DDM)	100%	n/a	77%	●
WASH	# of persons per latrine	Max. 20	n/a	22	●
	# of persons per shower	Max. 20	n/a	22	●
	Frequency of solid waste disposal	Min. weekly	n/a	Every day	●
Shelter	Average area covered per person	Min. 3.5m <sup>2</sup>	n/a	5.4 m <sup>2</sup>	●
	Average number of individuals per shelter	Max. 5	n/a	5	●
Food	% households accessed Family Food Parcel or equivalent in previous month	100%	n/a*	51%	●
Health	Health services available on-site or within walking distance	Yes	n/a	yes	●
Education	% of children aged 6-11 attending formal school	100%	n/a	39%	●
	% of children aged 12-17 attending formal school	100%	n/a	15%	●

\*Method of calculation for food distribution has changed from previous rounds

Targets based on minimum standards agreed with the CCCM Cluster, Iraq. Findings based on household-level data, enumerator field observations, and camp management documentation  
● Minimum standard reached, ● 50-99% of minimum standard reached, ● Less than 50% of minimum standard reached or not at all





# IDP Camp Profile - Basateen Al Sheuokh

Salah Al Din, Iraq

January 2018



## Protection

### Vulnerable groups

Pregnant / lactating women	4%	
Chronically ill individual(s)	7%	
Disabled individual(s)	6%	
Female headed households	23%	

### Intentions

45%	planned to move to a different location in next 3 months
12%	reported needing financial support to return and restart in order to return safely to their area of origin

### Restrictions

100%	reported being able to leave the camp temporarily (e.g. to go to the market, for livelihood opportunities)
------	--

### Documentation

7%	reported that one or more member is missing one or more documents
67%	reported that at least one of the members missing documents is an adult (18+)

### Top three missing documents reported by those households\*

Citizenship certificate	50%
MODM letter	33%
ID card	33%

### Top two reasons for not attending education\*

(of households with school-aged children not attending school)

Child is disinterested	25%
Child assists with household chores	13%



## Access to information

### Top three information sources regarding area of origin\*

From others who visited	70%
Personally visited	15%
Others who have not visited	6%

### Top three information needs\*

Basic services	78%
Livelihood sources	76%
Security situation	66%



## Livelihoods

12% reported not having an income source

### Top three income sources\*

Humanitarian aid	43%
Government aid	34%
Gifts	31%

### Top three reported livelihood coping strategies\*

Spent savings	27%
Spent savings	27%
Support from friends	23%



## Priority Needs

### Top 3 reported priority needs\*

Food	92%
Employment	40%
Clothing	40%



## WASH

### Latrines

100%	reported access to public or communal latrines. Of those:
100%	reported latrines were lockable from the inside
6%	reported latrines had functioning lighting
100%	reported latrines were gender segregated

### Top two most reported methods of waste removal

Collected	100%
n/a	n/a

### Primary drinking water sources

100%	outdoor water point
n/a	

### Access to drinking water

73%	reported at least 24 consecutive hours without access to water in the month prior to the assessment
-----	---



## Shelter

1% reported flooding in their shelter in the previous year

### Top observed shelter type

Tent	100%
83%	of tents have secondary cover

### Top reported needed basic items\*

Heating fuel	98%
Fuel storage	78%
Cooking fuel	64%

### Top reported needed winter item\*

Kerosene heater	97%
-----------------	-----

### Electricity access

Average number of hours of electricity per day	0
--	---



## Food Security

### Reported access to food assistance

51%	reported having received Public Distribution System (PDS) assistance in the month prior to the assessment
100%	reported access to a market within walking distance

### Top two food consumption coping strategies\*

Buy less expensive food	78%
Borrow food	63%

\*Respondents could select multiple responses  
\*\*Insufficient sample size; fewer than five respondents

