

Yemen Joint Market Monitoring Initiative

December 2021 Situation Overview

Governorates 17
Districts 62
Key informants 274



WASH Cluster
Water Sanitation Hygiene

CMWG

Intersector Cash
and Markets
Working Group

REACH

Informing
more effective
humanitarian action

Introduction

The Yemen Joint Market Monitoring Initiative (JMIMI) was launched by REACH in collaboration with the Water, Sanitation, and Hygiene (WASH) Cluster and the Cash and Market Working Group (CMWG) to support humanitarian actors with the harmonization of price monitoring among all cash actors in Yemen.

The JMIMI is a monthly survey of market systems. The basket of goods assessed includes 10 non-food items (NFIs), such as fuel, water, and hygiene products, reflecting the programmatic areas of the WASH Cluster. The JMIMI tracks all components of the WASH and Food Survival Minimum Expenditure Basket (SMEB) as well as other food and non-food items. In addition to price monitoring, the JMIMI includes indicators of market functionality, such as questions to infer the supply chain, vendors' constraints and ability to meet demands.

In light of the current COVID-19 pandemic, REACH has adapted the JMIMI to begin assessing the potential impact of the pandemic on markets and on respondents' businesses.

Methodology

Data was collected through interviews with vendor key informants (KIs), selected by partner organisations from markets of various sizes in both urban and rural areas. A minimum of three key informant interviews were conducted per district. Following data collection, REACH compiles, cleans and analyzes all data, through detailed follow-ups with partners.

REACH calculates prices on district, governorate and national level using medians, and it calculates SMEB prices. **Findings are indicative for the assessed locations and time frame in which the data was collected.** Please refer to page 12 for additional methodological details.

JMIMI monthly figures

Data collection **5th - 9th of December**

15 Participating partners
17 Governorates assessed
62 Districts assessed
274 Vendor KIs surveyed

| Assessed items | November 2021 (YER) | December 2021 (YER) | Change (from November 2021) |
|---|---------------------|---------------------|-----------------------------|
| Total SMEB* (dry beans/canned beans) | 113875 | 183406 | +58.8% |
| WASH SMEB** | 19341 | 24525 | +26.8% |
| Soap (100g) | 250 | 300 | +20.0% |
| Laundry powder (100g) | 175 | 250 | +42.9% |
| Sanitary napkins (10 Pack) | 675 | 850 | +25.9% |
| Water trucking (1m ³) | 3000 | 3267 | +8.9% |
| Bottled water (0.75L) | 188 | 200 | +6.4% |
| Treated water (10L) | 150 | 150 | 0.0% |
| Bleach (1L) | 979 | 1000 | +2.2% |
| Petrol (1L) | 700 | 1090 | +55.7% |
| Diesel (1L) | 670 | 1100 | +64.2% |
| Cooking gas (1cylinder) | 7000 | 7500 | +7.1% |
| Food SMEB (dry beans)[^] | 97475 | 205614 | +14.6% |
| Food SMEB (canned beans)[^] | 74963 | 194579 | +55.2% |
| Wheat flour (1 kg) | 450 | 830 | +84.4% |
| Rice (1 kg) | 1100 | 1150 | +4.5% |
| Dry kidney beans (1 kg) | 1600 | 2250 | +40.6% |
| Canned kidney beans (15 oz can) | 425 | 751 | +76.7% |
| Lentils (1 kg) | 1000 | 1050 | +5.0% |
| Vegetable oil (1L) | 1533 | 2200 | +43.5% |
| Sugar (1 kg) | 550 | 1000 | +81.8% |
| Salt (1 kg) | 160 | 200 | +25.0% |
| Potatoes (1 kg) | 500 | 700 | +40.0% |
| Onions (1 kg) | 500 | 700 | +40.0% |

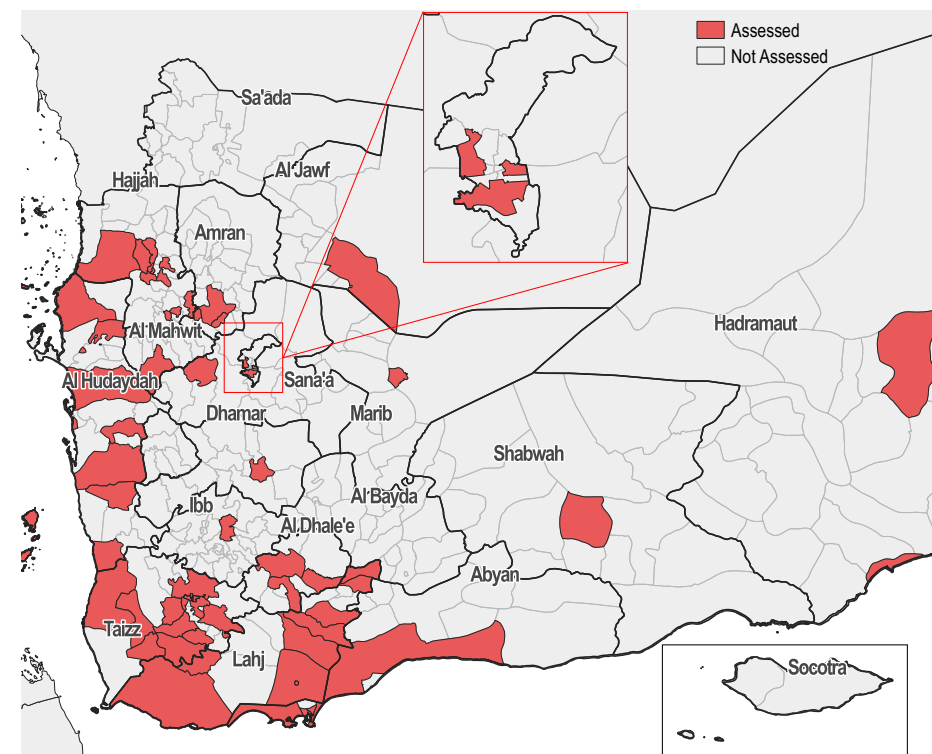
* Includes WASH SMEB, food SMEB and lumpsum of NFI/Shelter and Services. Per district, the cheapest bean type (dry or canned) is used to calculate the food component of the total SMEB.

** Contains soap (1.05 kg), laundry powder (2 kg), sanitary napkins (50 units), and water (3.15 m³).

[^] Contains wheat flour (75 kg), dry beans (10 kg) or canned beans (36 cans), vegetable oil (8 L), sugar (2.5 kg), salt (1kg)

Key findings

- After three months of steep increase (+39%), the median exchange rate in the south of Yemen remained relatively stable between November and December. In December, the exchange rate was found at 1488 YER per USD compared to 1447 YER to USD in November (+2.8%). The reported exchange rates in the North of Yemen also remained stable, at a median of 600 YER per USD in both December and November.
- The total SMEB increased with 58.8% compared to the previous month, as it was measured at a median price of 183406 YER in December.
- Wheat flour was reported at a national median of 830 YER compared to 450 YER in November, and national sugar prices jumped from 550 YER in November to 1000 YER in December. Together with a found increase in other food items, the food SMEB with canned beans was measured at an increase of 55.2% (194579 YER) compared to the previous measurement, and the food SMEB with dry beans was measured at 205614 YER (+14.6%).
- Major price differences exist between governorates and districts across Yemen. For instance, 43200 YER is the measured cost of the food SMEB with canned beans in Al Mahwit governorate, while in Aden the measured price is 137250 YER. Petrol prices in Southern governorates are found at median prices above 1000 YER per liter, while petrol prices in Northern governorates were found between 560 and 630 YER per liter.



Exchange Rate

500
► 0.0%
USD/YER
Official

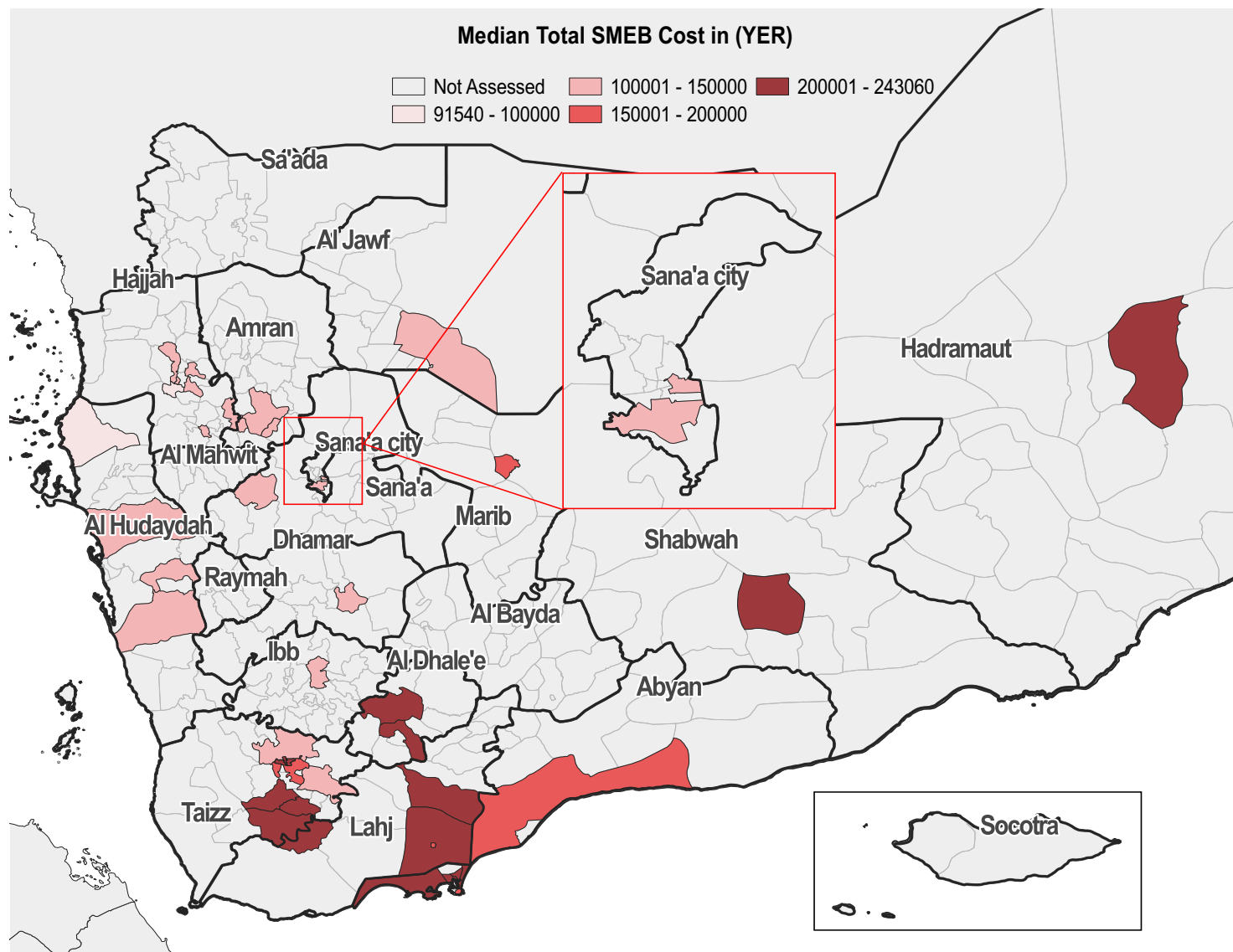
600
► 0.0%
USD/YER
Parallel market (in DFA)
rate December 2021

600
USD/YER
Parallel Market
rate (in DFA)
November 2021

1488
▲ 2.8%
USD/YER
Parallel market (in IRG)
rate December 2021

1447
USD/YER
Parallel Market rate
(in IRG)
November 2021

Total SMEB prices (5 - 9 December 2021)*



*Per district, the cheapest type of bean (dry or canned) is used to calculate the total SMEB.

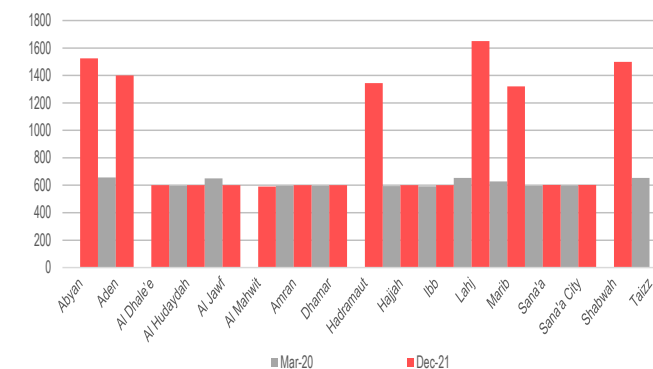
Exchange rate (YER/USD)*

| Governorate | March 2020 ^A | November 2021 | December 2021 |
|-------------|-------------------------|---------------|---------------|
| Abyan | NA | 1465 | 1525 |
| Aden | 658 | 1446 | 1400 |
| Al Dhale'e | NA | 600(1440) | 600(1430) |
| Al Hudaydah | 595 | 600(1500) | 600(1400) |
| Al Jawf | 650 | 600 | 600 |
| Al Mahwit | NA | NA | 590 |
| Amran | 595 | 600 | 601 |
| Dhamar | 595 | 600 | 600 |
| Hadramaut | NA | 1500 | 1345 |
| Hajjah | 594 | 600 | 600 |
| Ibb | 592 | 599 | 600 |
| Lahj | 654 | 1440 | 1650 |
| Marib | 628 | NA | 1320 |
| Sana'a | 595 | NA | 602 |
| Sana'a City | 598 (628) | 600 | 602 |
| Shabwah | NA | 1450 | 1500 |
| Taizz | 654 | 1450 | 1410 |

*New banknote exchange rates / Exchange rate for the new currency in parenthesis. NA (not applicable) data was not available.

^AMarch was chosen as a baseline to assess the effect of COVID-19 on exchange rates.

Exchange rate in March 2020 and December 2021 (YER/USD)*

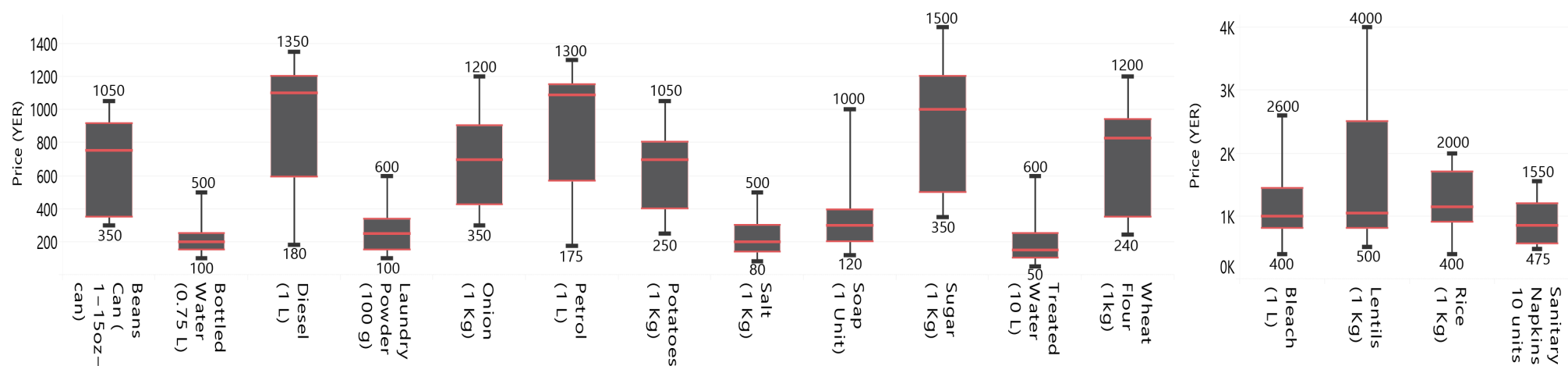


*Governorate labels point to two bars indicating March 2020 base values and December 2021 values. Gaps between bars indicates that no exchange rate value was recorded in this governorate.

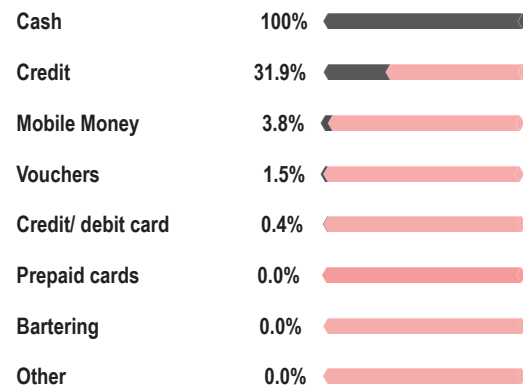
Price per key item, per governorate (YER)*

| Governorate | Petrol (1L) | Diesel (1L) | Cooking gas (1 cylinder) | Bottled water (0.75L) | Treated water (10L) | Soap (100g) | Laundry powder (100g) | Sanitary napkins (10 units) | Bleach (1L) | Water trucking (1m³) | WASH SMEB | Wheat flour (1kg) | Rice (1kg) | Beans dry (1kg) | Beans cans (15oz) | Lentils (1kg) | Vegetable oil (1L) | Sugar (1kg) | Salt (1kg) | Potatoes (1kg) | Onions (1 kg) | Food SMEB (Dry Beans) | Food SMEB (Canned beans) |
|-----------------------|-------------|-------------|--------------------------|-----------------------|---------------------|-------------|-----------------------|-----------------------------|-------------|----------------------|-----------|-------------------|------------|-----------------|-------------------|---------------|--------------------|-------------|------------|----------------|---------------|-----------------------|--------------------------|
| Abyan | 1110 | 1150 | 5500 | 150 | 150 | 395 | 200 | 1100 | 2553 | 3000 | 23098 | 900 | 1500 | NA | 800 | NA | 3000 | 1300 | 200 | 700 | 1000 | NA | 123750 |
| Aden | 1090 | 1165 | 14645 | 275 | 150 | 395 | 240 | 1000 | 1600 | 5000 | 29898 | 970 | 1825 | 2500 | 900 | 2300 | 3300 | 1300 | 300 | 750 | 800 | 111700 | 137250 |
| Al Dhale'e | 1125 | 1225 | 17250 | 300 | 200 | 313 | 335 | 1125 | 1467 | 6250 | 34287 | 880 | 1675 | 3500 | 794 | 2000 | 2807 | 1120 | 300 | 900 | 1000 | 124014 | 121317 |
| Al Hudaydah | 570 | 600 | 8500 | 150 | 50 | 150 | 140 | 550 | 540 | 3350 | 17740 | 400 | 900 | 618 | 350 | 900 | 1075 | 450 | 150 | 325 | 400 | 44890 | 52050 |
| Al Jawf | 560 | 590 | 5500 | 230 | NA | 300 | 300 | 1500 | 800 | 2500 | 24525 | 360 | 600 | NA | 390 | NA | 1500 | 600 | 120 | 400 | 450 | NA | 54660 |
| Al Mahwit | 680 | 570 | 6000 | 150 | 300 | 300 | 375 | 1000 | 725 | NA | NA | 300 | 1000 | 600 | 350 | 800 | 850 | 450 | 175 | 600 | 600 | 36600 | 43200 |
| Amran | 560 | 565 | 5500 | 150 | 250 | 330 | 213 | 679 | 832 | 1917 | 17143 | 300 | 675 | NA | 350 | 1000 | 1325 | 475 | 100 | 475 | 488 | NA | 46988 |
| Dhamar | 560 | 550 | 7500 | 150 | 600 | 200 | 150 | 650 | 800 | 2000 | 14650 | 320 | 600 | NA | 350 | 950 | 1600 | 550 | 100 | 400 | 450 | NA | 50875 |
| Hadramaut | 1150 | 1150 | 4000 | 200 | NA | NA | 229 | 1300 | NA | 5000 | 37330 | 1100 | 1500 | 1900 | 750 | 4000 | 2700 | 1250 | 325 | 900 | 800 | 138600 | 134550 |
| Hajjah | 650 | 650 | 5400 | 150 | 118 | 184 | 130 | 550 | 1000 | 3000 | 16289 | 320 | 900 | 625 | 350 | 800 | 1000 | 500 | 150 | 400 | 400 | 38410 | 48250 |
| Ibb | 560 | 570 | 10250 | 150 | 100 | 200 | 150 | 600 | 800 | 3000 | 17550 | 450 | 650 | 1300 | 350 | 750 | 650 | 500 | 150 | 300 | 350 | 53350 | 52950 |
| Lahj | 1125 | 1200 | 9000 | 200 | 600 | 400 | 300 | 1000 | 1350 | 2500 | 24355 | 940 | 1950 | 3500 | 900 | 2125 | 2850 | 1200 | 300 | 800 | 800 | 139050 | 129767 |
| Marib | 175 | 180 | 3200 | 200 | 200 | 500 | 500 | 1200 | 1300 | 5000 | 37000 | 940 | 1600 | 800 | 900 | 2150 | 1500 | 1200 | 292 | 1050 | 700 | 93792 | 118192 |
| Sana'a | 565 | 570 | 5000 | 150 | 200 | 150 | 250 | 475 | 700 | 5750 | 27062 | 350 | 950 | NA | 350 | 900 | 1100 | 450 | 125 | 375 | 425 | NA | 48900 |
| Sana'a City | 560 | 570 | 5000 | 150 | 150 | 200 | 250 | 500 | 700 | 2500 | 17475 | 300 | 1000 | NA | 350 | 1000 | 1250 | 450 | 100 | 500 | 500 | NA | 51125 |
| Shabwah | 1150 | 1150 | 5500 | 200 | NA | 300 | 600 | 650 | 900 | 3000 | 27850 | 1000 | 1000 | NA | 950 | 500 | 5000 | 1000 | 400 | 1000 | 600 | NA | 152100 |
| Taizz | 1250 | 1225 | 10000 | 300 | 200 | 350 | 350 | 1225 | 1050 | 3667 | 30210 | 900 | 1400 | 3500 | 1000 | 2900 | 2813 | 1200 | 200 | 800 | 1000 | 128163 | 127421 |
| National median price | 1090 | 1100 | 7500 | 200 | 150 | 300 | 250 | 850 | 1000 | 3267 | 24525 | 830 | 1150 | 2250 | 751 | 1050 | 2200 | 1000 | 200 | 700 | 700 | 111700 | 116347 |

Price distribution of key items across Yemen (YER)

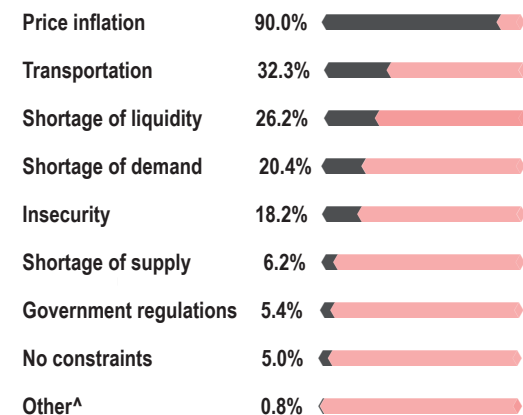


WASH vendor KIs reported accepting the following payment



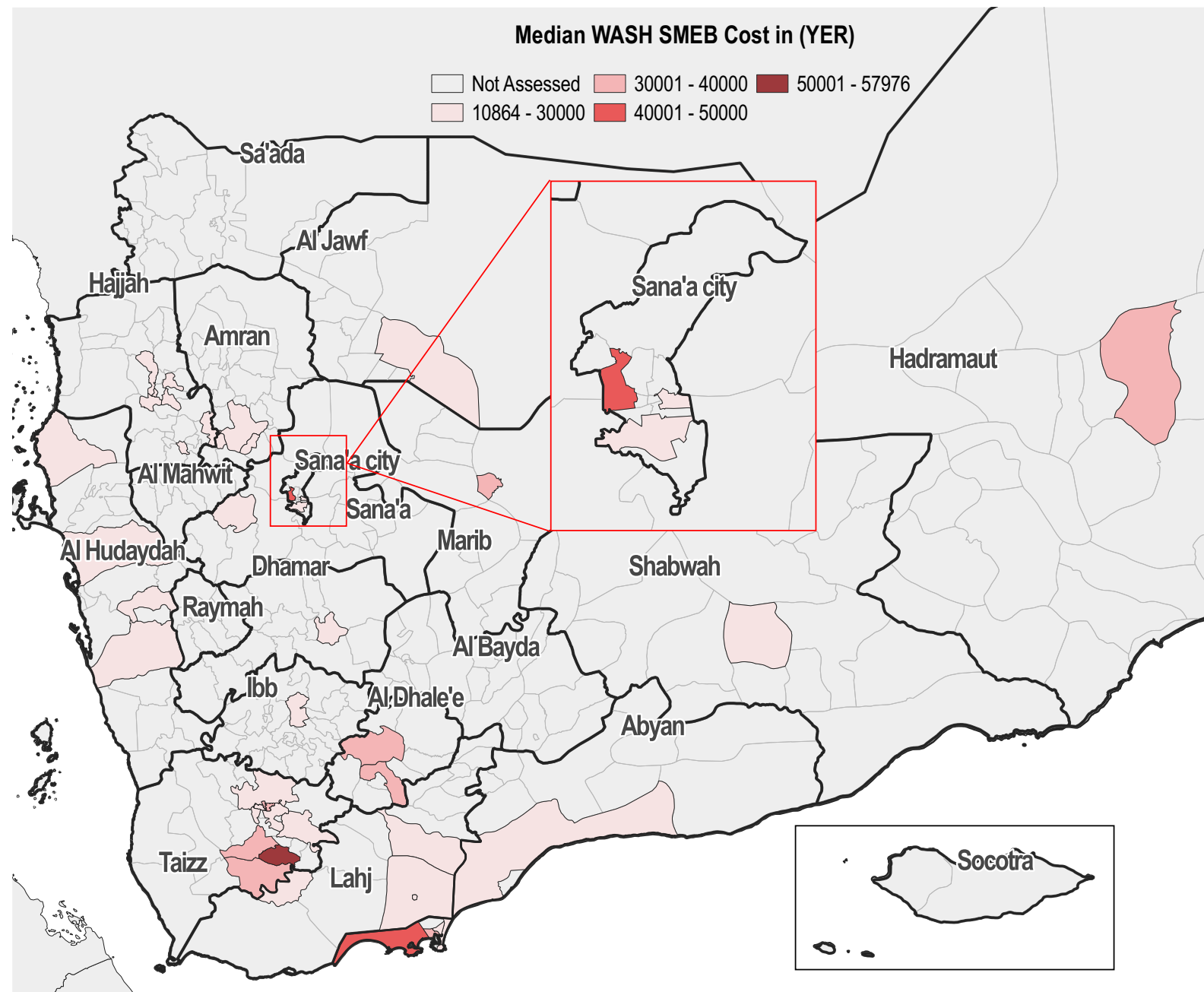
*Values do not add up to 100% as vendor KIs were allowed to select multiple options.

Most commonly reported constraints, by % of WASH vendor



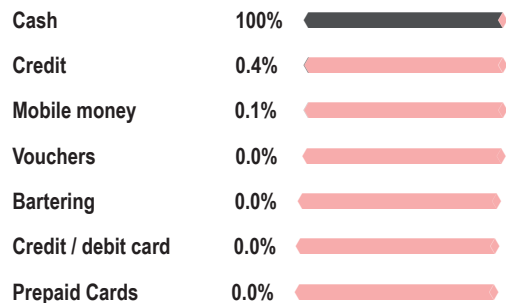
*Values do not add up to 100% as vendor KIs were allowed to select multiple options.

^Currency manipulation.



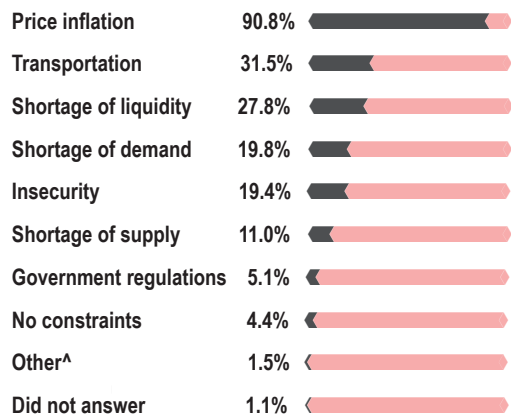
Food SMEB*

Food vendor KIs reported accepting the following payment modalities*



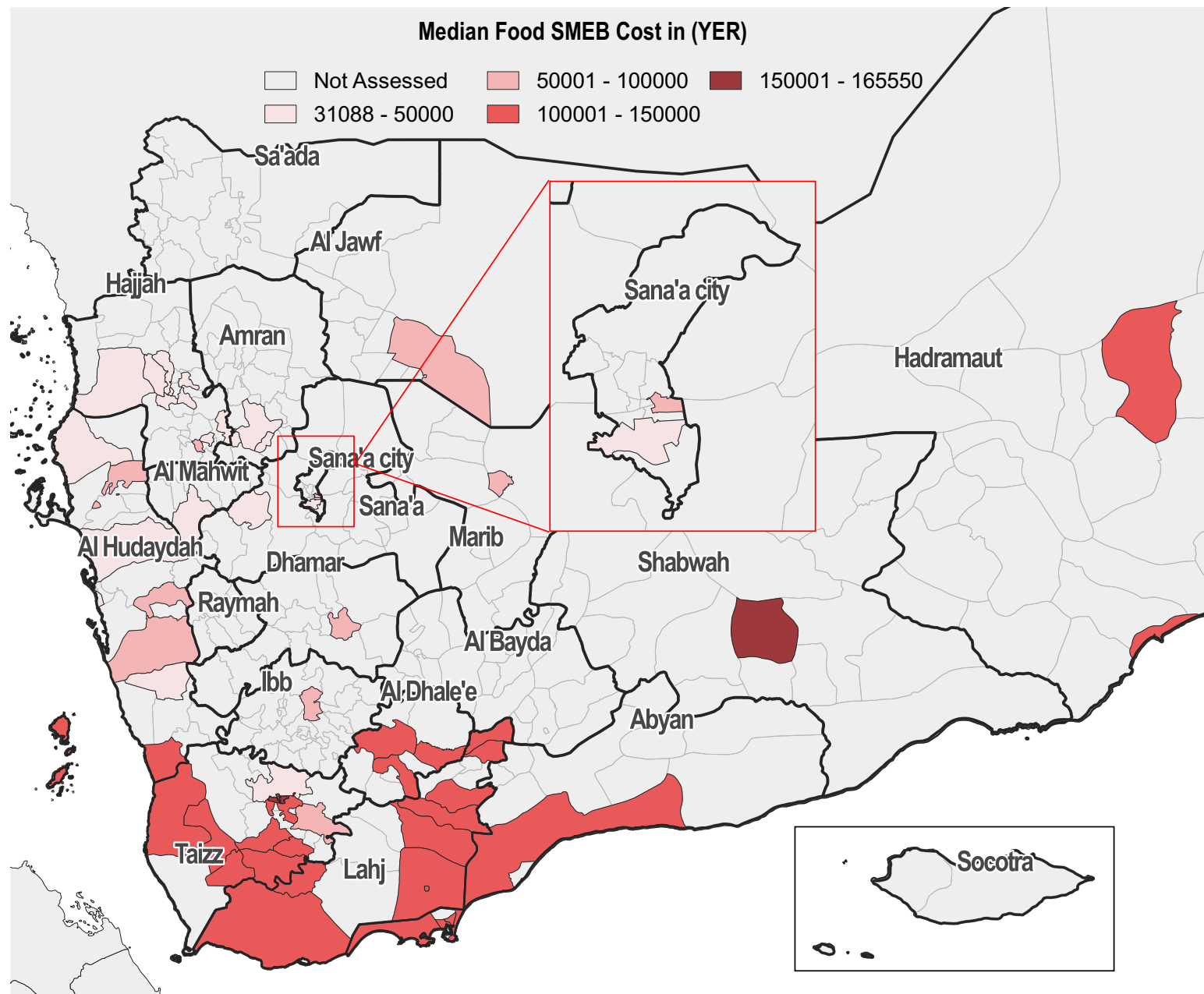
*Values do not add up to 100% as vendor KIs were allowed to select multiple options.

Most commonly reported constraints, by % of food vendor



*Values do not add up to 100% as vendor KIs were allowed to select multiple options.

^Currency manipulation and indebtedness

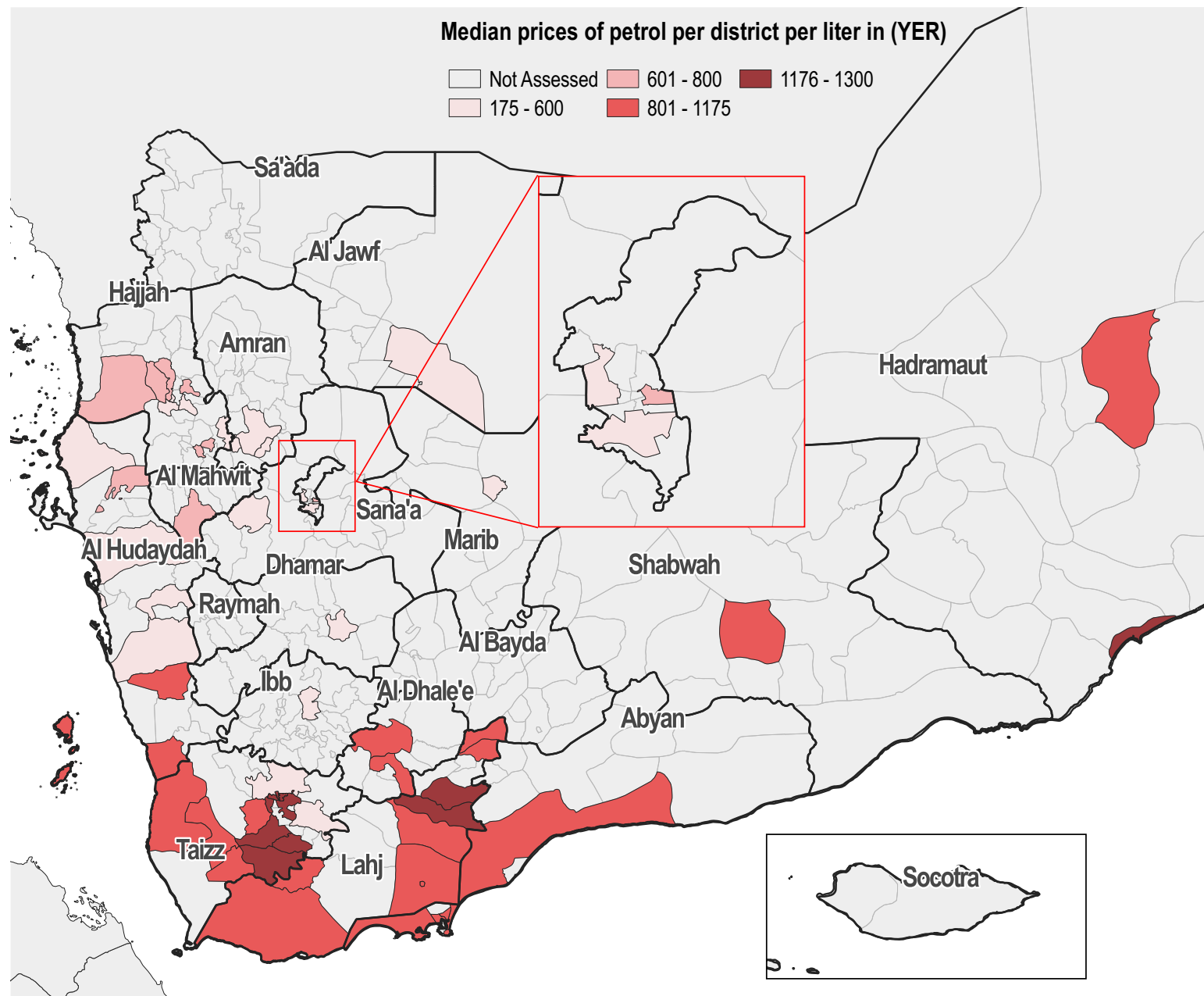


*Per district, the cheapest type of bean (dry or canned) is used to calculate the food SMEB. Refer to the table on page 10-11 for the Food SMEB prices per district, both

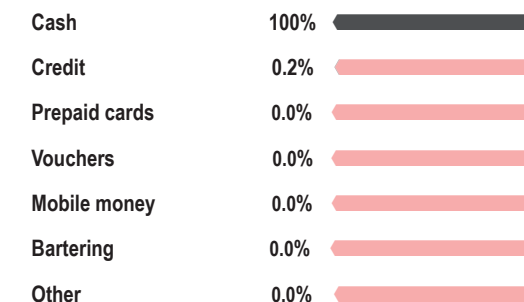
Fuel

Median prices of petrol per district per liter in (YER)

Not Assessed 601 - 800 1176 - 1300
175 - 600 801 - 1175

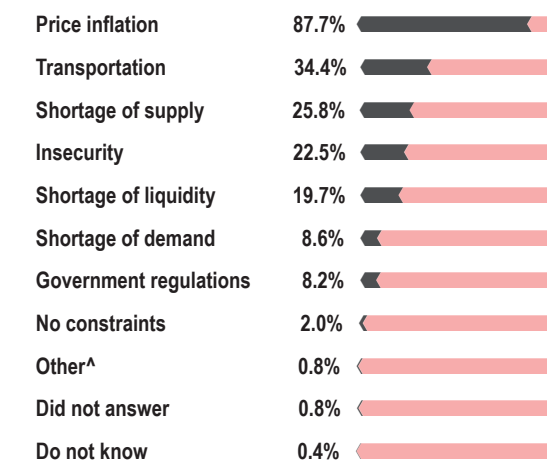


Fuel vendor KIs reported accepting the following payment modalities*



*Values do not add up to 100% as vendor KIs were allowed to select multiple options.

Most commonly reported constraints, by % of fuel vendor KIs*

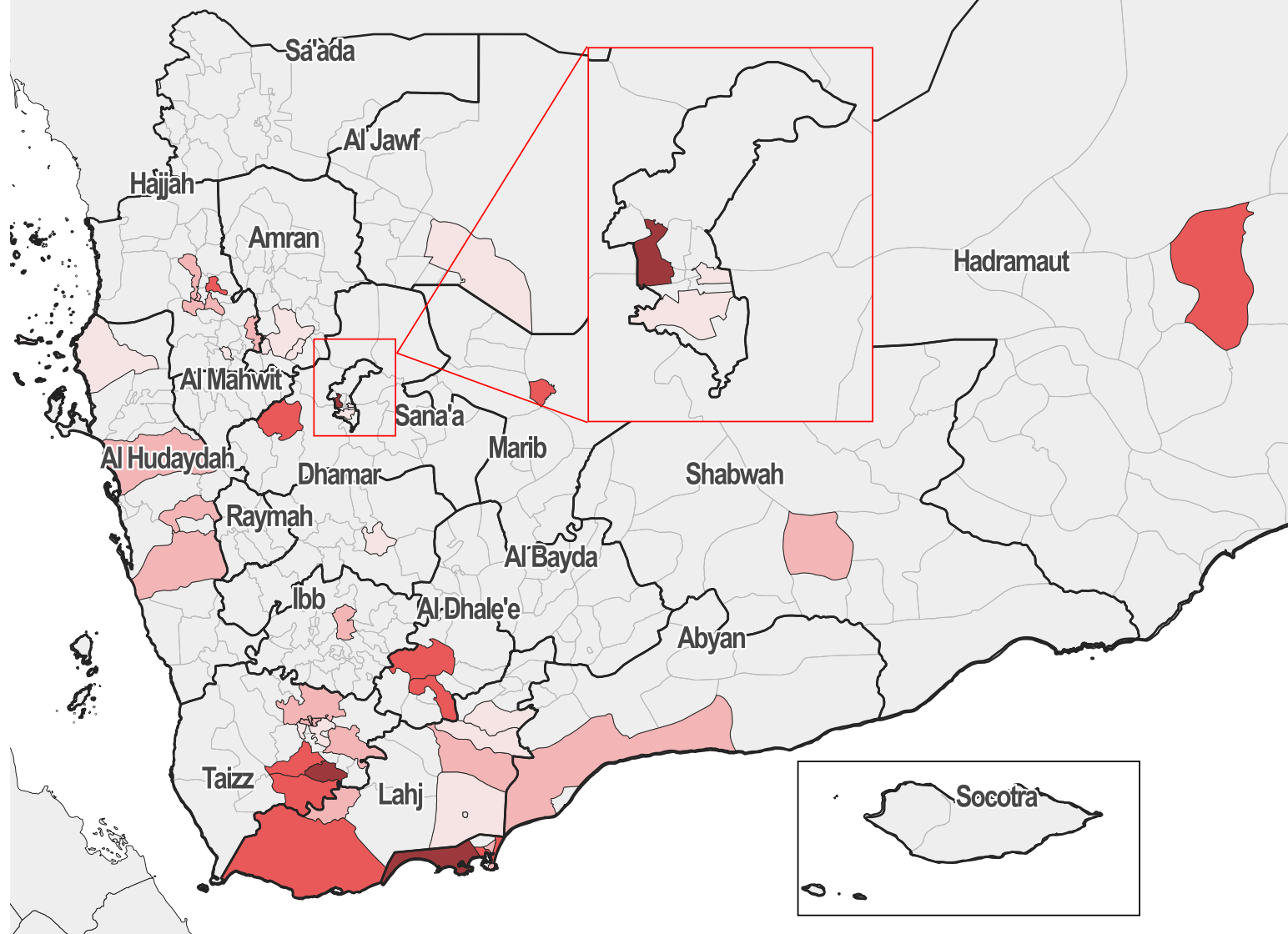
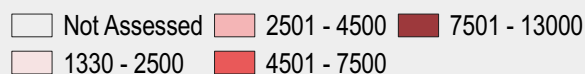


*Values do not add up to 100% as vendor KIs were allowed to select multiple options.

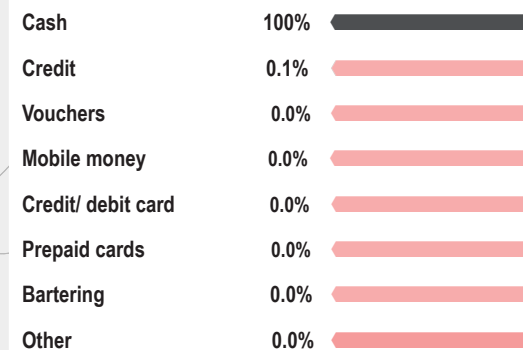
^Currency manipulation and lack of gas from source.

Water Trucking

Cost of Cubic Meter (YER)

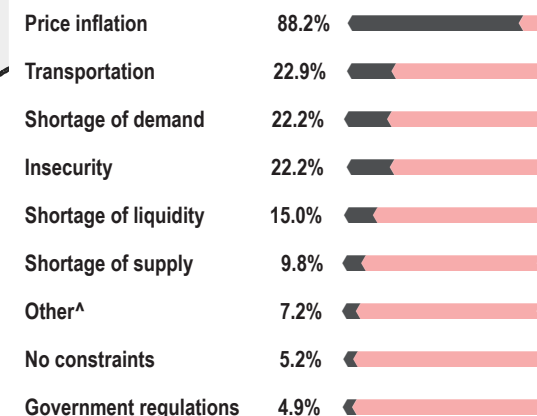


Water trucking vendor KIs reported accepting the following payment modalities*



*Values do not add up to 100% as vendor KIs were allowed to select multiple options.

Most commonly reported constraints, by % of water trucking



*Values do not add up to 100% as vendor KIs were allowed to select multiple options.

^Currency manipulation, high fuel prices, lack of fuel, expensive truck parts and privatization of water station.

SUPPLY CHAIN OVERVIEW FOR YEMEN

Median price of goods originating from Aden and Al Hudaydah

Vendor KIs were asked about the origin of various products sold in their stores. The two main ports of origin for these products were Aden and Al Hudaydah. The table below shows the median price of goods originating from these two ports.

| Item | Al Hudaydah (price in YER) | Aden (price in YER) |
|-----------------------------------|----------------------------|---------------------|
| Petrol (1L) | 570 | 1100 |
| Diesel (1L) | 600 | 1180 |
| Cooking Gas (1 cylinder) | 6800 | 14290 |
| Bottled water (0.75L) | 150 | 250 |
| Treated water (10L) | 50 | 200 |
| Bleach (1L) | 540 | 1600 |
| Soap (100g) | 150 | 395 |
| Laundry Powder (100g) | 140 | 300 |
| Sanitary Napkins (10 units) | 550 | 1200 |
| Water trucking (1m ³) | 3500 | 4000 |
| Wheat Flour (1kg) | 400 | 1000 |
| Rice (1kg) | 1050 | 1800 |
| Beans Dry (1kg) | 850 | 3500 |
| Beans Can (15oz can) | 350 | 1000 |
| Lentils (1kg) | 875 | 2900 |
| Vegetable Oil (1L) | 1050 | 3000 |
| Sugar (1kg) | 445 | 1200 |
| Salt (1kg) | 150 | 200 |
| Potatoes (1kg) | 325 | 800 |
| Onions (1kg) | 485 | 800 |

Average reported restocking time (days)*^

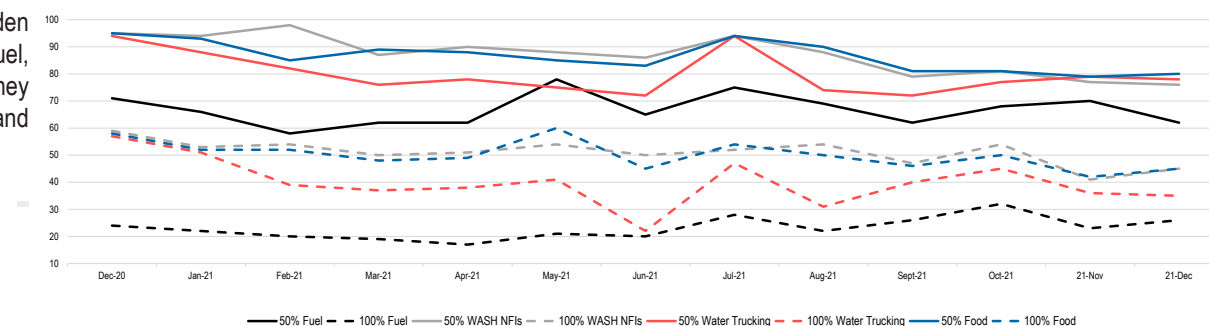
| Governorate | Fuel Items | WASH Items | Food Items |
|-------------|------------|------------|------------|
| Abyan | 5 (6) | 4 (6) | 4 (5) |
| Aden | 3 (5) | 2 (3) | 2 (2) |
| Al Dhale'e | 5 (6) | 2 (3) | 4 (3) |
| Al Hudaydah | 8 (8) | 7 (7) | 6 (6) |
| Al Jawf | 3 (4) | 5 (7) | 5 (5) |
| Al Mahwit | 8 (NA) | 2 (NA) | 7 (NA) |
| Amran | 2 (1) | 2 (3) | 2 (2) |
| Dhamar | 4 (NA) | 3 (3) | 3 (3) |
| Hadramaut | 5 (7) | 6 (NA) | 6 (16) |
| Hajjah | 8 (8) | 5 (6) | 4 (4) |
| Ibb | 10 (7) | 1 (3) | 1 (5) |
| Lahj | 8 (11) | 7 (11) | 7 (9) |
| Marib | 5 (NA) | 8 (NA) | 8 (NA) |
| Sana'a | 2 (NA) | 2 (NA) | 2 (NA) |
| Sana'a City | 1 (3) | 2 (3) | 2 (3) |
| Shabwah | 1 (4) | 2 (3) | 1 (2) |
| Taizz | 5 (6) | 4 (7) | 4 (5) |

*Previous average restocking time (November 2021) in days between brackets.

^ Darker colour strokes indicate high restocking times, lighter colour strokes indicate steep declines in restocking time. NA (not applicable) indicates that no data is available.

Vendor capacity to respond to a sudden increase in demand: Proportion of vendors able to absorb a 50% and 100% increase in demand for key items*

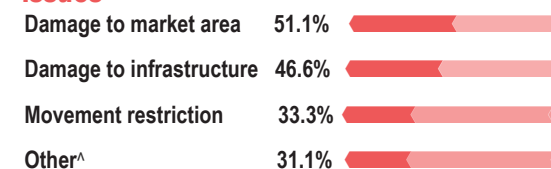
To understand vendor capacity to cope with sudden increases in the demand for water trucking, fuel, and WASH items, vendor KIs were asked if they would be able to increase their stock by 50% and 100% respectively.



Effect of supply route changes on businesses

Overall, 16% of vendor KIs reported having faced supply chain disruptions in the 30 days prior to data collection. Those vendors were asked which supply chain issues they had faced (see graph on the right).

Most commonly reported supply chain issues*



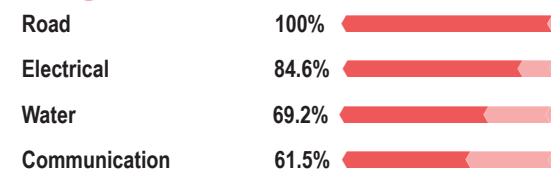
*Reported by 45 key informants. Values do not add up to 100% as vendor KIs were allowed to select multiple options.

^Other include increasing and fluctuating prices, closure of supplier due to fluctuating prices, and change of supply route.

Damaged infrastructure affecting vendor capacity to conduct business

The 26 vendor KIs who reported "damage to the market area" and/or "damage to the market facility" as concerns affecting their capacity to run their businesses were then asked which type of infrastructure was most damaged.

Most commonly reported infrastructure damage*

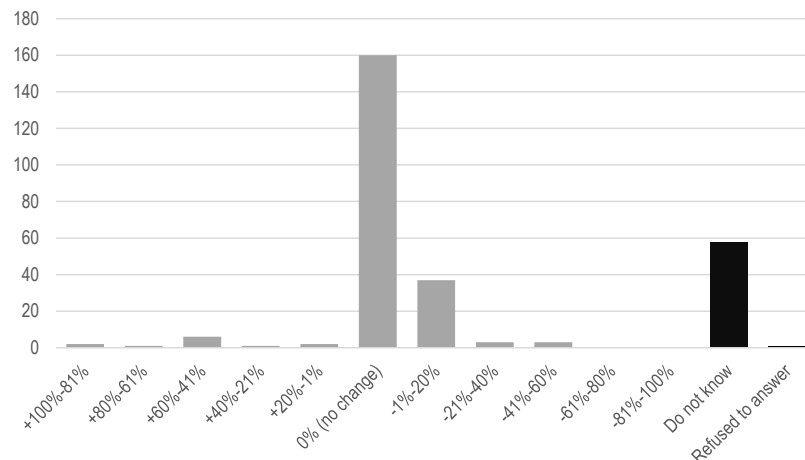


*Reported by 26 key informants. Values do not add up to 100% as vendor KIs were allowed to select multiple options.

Impact of COVID-19 on respondents' businesses*

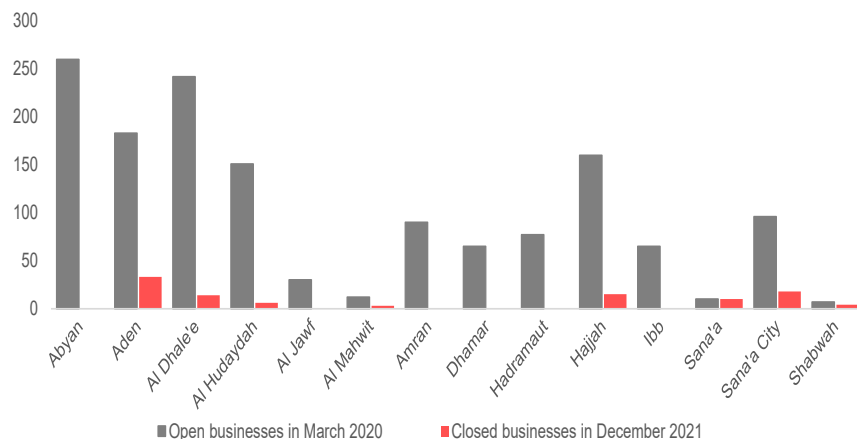
Reported estimated change in number of customers in the two weeks prior to data collection

Of the 274 vendor KIs interviewed, 160 KIs, or **58.4%** reported having perceived no change in the number of customers in the two weeks prior to data collection. 12 KIs, or **3.3%** of vendors reported having experienced an increase in the number of customers. **15.8%** (43 KIs) of vendors reported having experienced a decrease in the number of customers. **21.5%** (59 KIs) reported not knowing or refused to answer the question.



Average number of businesses closures by governorate^

The reported number of businesses within a 2 minute walk from vendor KIs' stalls being closed in the two weeks prior to data collection (**148** businesses) increased by **26.5%** compared to the last round of data collection in November (**117** businesses).



Average reported number of nearby businesses that were open in March 2020*

7.3

Average reported number of nearby businesses that were closed in December 2021^

0.5

Average reported number of nearby businesses that were closed in November 2021^

0.5

Most common COVID-19 related constraints*

Of the 274 vendor KIs surveyed 10 vendors (**3.6%**), reported having faced difficulties obtaining key commodities due to disruptions caused by COVID-19 measures in the two weeks prior to data collection. Their top 3 constraints and top 3 goods most difficult to obtain are given here.

| | | |
|---------------------------------|-------|--|
| Lack of demand/lack of supplies | 100% | |
| Fees/Insufficient funds | 83.3% | |
| Unavailability of imports | 33.3% | |

Results from the previous JMIMI round (7 - 11 November)

| | | |
|---------------------------|-------|--|
| Shortage of supplies | 100% | |
| Unavailability of imports | 33.3% | |
| Transportation | 33.3% | |
| Lack of demand | 33.3% | |

Most difficult goods to obtain*

| | | |
|-------------|-------|--|
| Cooking gas | 100% | |
| Wheat flour | 83.3% | |
| Water | 66.6% | |

Results from the previous JMIMI round (7 - 11 November)

| | | |
|------------------|-------|--|
| Flour | 66.6% | |
| Vegetable oil | 66.6% | |
| Sanitary napkins | 66.6% | |
| Water | 66.6% | |
| Salt | 66.6% | |

*Based on the responses from the 3.6% (10/274) of vendor KIs who had difficulties obtaining goods due to COVID-19.

ABOUT REACH'S COVID-19 RESPONSE

As an initiative deployed in many vulnerable and crisis-affected countries, REACH is deeply concerned by the devastating impact the COVID-19 pandemic may have on the millions of affected people we seek to serve. REACH works with Cash Working Groups and Partners to provide up-to-date evidence to inform the humanitarian responses in the countries where we operate. COVID-19-relevant market monitoring and market assessments are a key area where REACH aims to leverage its existing expertise to help humanitarian actors understand the impact of changing restrictions on markets and trade. Updates regarding REACH's response to COVID-19 can be found in [a devoted thread](#) on the REACH website. Contact geneva@impact-initiatives.org for further information.

*REACH and the CMWG are in the process of reviewing the COVID-19 indicators and questions to assess the validity and the analysis. We ask readers to account for this while interpreting the findings represented here.

DISTRICTS COVERED*

| Governorate | District | Petrol price | Water Trucking | SMEB WASH | SMEB Food (dry beans) | SMEB Food (canned beans) | SMEB Total (canned/dry)* | Fuel: Supplier Governorate | Fuel: Total number of respondents^ | WASH: Supplier Governorate | WASH: Total number of respondents^ | Food: Supplier governorate | Food: Total number of respondents^ |
|-------------|-----------------|--------------|----------------|-----------|-----------------------|--------------------------|--------------------------|----------------------------|------------------------------------|----------------------------|------------------------------------|----------------------------|------------------------------------|
| Hajjah | Abs | 700 | NA | NA | NA | 48250 | NA | Al Hidaydah | 3/3 | Al Hidaydah | 2/3 | NA | NA |
| Al Dhale'e | Ad Dhale'e | 1100 | 6500 | 34300 | 124014 | 114502 | 205614 | Aden | 4/4 | Al Dhale'e | 4/4 | NA | NA |
| Lahj | Al Hawtah | 1090 | 2400 | 22520 | NA | 125600 | 198720 | Aden | 7/7 | Aden | 7/7 | Aden | 6/7 |
| Taizz | Al Mukha | 1150 | NA | NA | 129025 | 125019 | NA | Aden | 6/6 | Aden | 6/6 | Aden | 6/6 |
| Aden | Al Buraiqeh | 1090 | 10000 | 49650 | 107800 | 104400 | 208050 | Aden | 5/5 | Aden | 5/5 | Aden | 5/5 |
| Lahj | Al Had | 1100 | NA | NA | NA | 131818 | NA | Aden | 3/3 | Aden | 3/3 | Lahj | 2/3 |
| Al Hidaydah | Al Hawak | 560 | NA | NA | 42005 | 50215 | NA | NA | NA | NA | NA | Aden | 3/3 |
| Sana'a | Al Haymah Ad | 565 | 5750 | 27062 | NA | 48900 | 119962 | NA | NA | NA | NA | Al Bayda | 4/4 |
| Al Jawf | Al Hazm | 560 | 2500 | 24525 | NA | 54660 | 126485 | Marib | 3/3 | Sana'a | 3/3 | Sana'a | 3/3 |
| Al Hidaydah | Al Khawkhah | 1100 | NA | NA | NA | 123712 | NA | Aden | 3/3 | Aden | 3/3 | Aden | 3/3 |
| Taizz | Al Ma'afer | 1250 | 6500 | 37290 | 127300 | 130800 | 211890 | NA | NA | NA | NA | NA | NA |
| Lahj | Al Madaribah Wa | 1150 | 6000 | NA | NA | 122317 | NA | Aden | 3/3 | Aden | 3/3 | Aden | 3/3 |
| Hajjah | Al Mahabishah | 570 | 4500 | 22000 | 45732 | 49332 | 111732 | Al Hidaydah | 3/3 | Hajjah | 6/6 | Hajjah | 3/3 |
| Ibb | Al Makhadir | 560 | 3000 | 17550 | 53350 | 52950 | 114900 | NA | NA | Ibb | 3/3 | Ibb | 3/3 |
| Aden | Al Mansura | 1090 | 6000 | 33450 | NA | 145100 | 229150 | Aden | 3/3 | Aden | 3/3 | Aden | 3/3 |
| Lahj | Al Maqatirah | 1125 | 3000 | 26310 | NA | 126050 | 202960 | Aden | 3/3 | Aden | 3/3 | Aden | 3/3 |
| Taizz | Al Mawasit | 1300 | 13000 | 57976 | 123823 | 129823 | 232399 | NA | NA | Taiz | 2/3 | Taiz | 2/3 |
| Lahj | Al Milah | 1150 | 3500 | 25635 | 139050 | 136450 | 215285 | Aden | 3/3 | Lahj | 2/3 | Lahj | 3/3 |
| Taizz | Al Mudhaffar | 1263 | 3667 | 29762 | 161950 | 137950 | 239012 | Aden | 4/5 | Aden | 6/6 | Aden | 6/6 |
| Hadramaut | Al Mukalla City | 1200 | NA | NA | NA | 113500 | NA | Hadramawt | 3/3 | NA | NA | Hadramaut | 3/3 |
| Taizz | Al Qahirah | 1250 | 3650 | 30210 | 165550 | 139050 | 243060 | Aden | 4/6 | Aden | 6/6 | Taiz | 5/6 |
| Al Hidaydah | Al Qanawis | 800 | NA | NA | NA | 52675 | NA | NA | NA | Al Hidaydah | 9/9 | Al Hidaydah | 9/9 |
| Taizz | Al Wazi'iyah | 1100 | NA | NA | NA | 123262 | NA | Aden | 3/3 | Aden | 3/3 | Aden | 3/3 |
| Al Hidaydah | Alluheyah | 580 | 2000 | 12875 | 39375 | 48475 | 99550 | Al Hidaydah | 5/5 | Al Hidaydah | 6/6 | Al Hidaydah | 6/6 |
| Amran | Amran | 560 | 1834 | 15629 | NA | 47650 | 107279 | Al Bayda | 4/6 | Amran | 5/6 | NA | NA |
| Sana'a City | As Sabain | 560 | 2500 | 17475 | NA | 46325 | 107800 | Marib | 4/7 | Al Bayda | 7/7 | Al Bayda | 7/7 |
| Al Hidaydah | As Sukhnah | 560 | 3500 | 18350 | NA | 52050 | 114400 | Al Hidaydah | 3/3 | Al Hidaydah | 3/3 | Al Hidaydah | 3/3 |
| Aden | Ash Shaikh | 1090 | 4000 | 25760 | NA | 140900 | 217260 | Aden | 6/6 | Aden | 6/6 | Aden | 6/6 |
| Taizz | Ash Shamayatayn | 1300 | 7500 | 39300 | 135200 | 136200 | 221800 | Aden | 4/6 | Aden | 4/7 | Aden | 4/7 |
| Al Dhale'e | Ash Shu'ayb | NA | NA | NA | NA | 121317 | NA | NA | NA | Aden | 3/3 | Aden | 3/3 |
| Hajjah | Aslem | 700 | NA | NA | NA | 48250 | NA | Al Hidaydah | 2/3 | NA | NA | NA | NA |
| Taizz | At Ta'iziyah | 560 | 3000 | 17550 | 49600 | 49200 | 111150 | NA | NA | Taizz | 3/3 | Taizz | 3/3 |
| Shabwah | Ataq | 1150 | 3000 | 27850 | NA | 152100 | 230550 | Marib | 2/3 | Aden | 3/3 | Abyan | 3/3 |
| Sana'a City | Az'zal | 625 | 1330 | 10864 | NA | 55925 | 110789 | Sana'a | 3/3 | Sana'a | 3/3 | Sana'a | 3/3 |
| Al Hidaydah | Bajil | 560 | 3200 | 17530 | 47775 | 51875 | 109305 | Al Hidaydah | 3/3 | Al Hidaydah | 3/3 | Al Hidaydah | 3/3 |
| Al Mahwit | Bani Sa'd | 680 | NA | NA | 36600 | 43200 | NA | NA | NA | Al Mahwit | 2/1 | NA | NA |
| Al Hidaydah | Bayt Al Faqiah | 560 | 3500 | 17950 | NA | 52050 | 114000 | Al Hidaydah | 3/3 | Al Hidaydah | 3/3 | Al Hidaydah | 3/3 |
| Aden | Craiter | 1090 | 3334 | 26419 | 111700 | 124100 | 188719 | Aden | 6/6 | Aden | 6/6 | Aden | 6/6 |
| Dhamar | Dhamar City | 560 | 2000 | 14650 | NA | 50875 | 109525 | NA | NA | Dhamar | 3/3 | Dhamar | 2/3 |
| Taizz | Dimnat Khadir | 560 | 3000 | 17550 | 52350 | 52950 | 117200 | Sana'a | 2/3 | Taiz | 3/3 | Taiz | 3/3 |
| Lahj | Habil Jabr | 1200 | 2000 | NA | NA | 129767 | NA | Aden | 3/3 | Aden | 3/3 | Aden | 3/3 |
| Hajjah | Hajjah City | 700 | NA | NA | NA | 48250 | NA | Al Jawf | 3/3 | Al Bayda | 3/3 | Al Bayda | 3/3 |
| Taizz | Jabal Habashy | 1175 | NA | NA | NA | NA | NA | Lahj | 3/3 | Taiz | 3/3 | Taiz | 3/3 |

CONT.

| Governorate | District | Petrol price | Water Trucking | SMEB WASH | SMEB Food (dry beans) | SMEB Food (canned beans) | SMEB Total (dry/canned)* | Fuel: Supplier Governorate | Fuel: Total number of respondents^ | WASH: Supplier Governorate | WASH: Total number of respondents^ | Food: Supplier governorate | Food: Total number of respondents^ |
|-------------|-------------------|--------------|----------------|-----------|-----------------------|--------------------------|--------------------------|----------------------------|------------------------------------|----------------------------|------------------------------------|----------------------------|------------------------------------|
| Amran | Jabal Iyal Yazid | 560 | 2000 | 18656 | NA | 46325 | 108981 | Amran | 3/3 | Amran | 3/3 | Amran | 3/3 |
| Abyan | Khanfir | 1110 | 3000 | 23098 | NA | 123750 | 197448 | Aden | 3/4 | Abyan | 3/5 | Abyan | 3/5 |
| Hajjah | Khayran Al | 650 | 3000 | 15585 | NA | 41750 | 104635 | NA | NA | Hajjah | 3/3 | Hajjah | 3/3 |
| Aden | Khur Maksar | 1090 | 5000 | 29898 | 131350 | 137250 | 211848 | Aden | 7/7 | Aden | 7/7 | Aden | 7/7 |
| Hajjah | Kuhlan Affar | 600 | 3000 | 16125 | NA | 48789 | 108914 | Amran | 3/3 | Amran | 3/3 | Amran | 3/3 |
| Hajjah | Kuhlan Ash Sharaf | 650 | 7000 | 28375 | NA | 42500 | 114875 | NA | NA | Hajjah | 3/3 | Hajjah | 3/3 |
| Sana'a City | Ma'ain | 560 | 10000 | 41100 | NA | NA | NA | Marib | 3/3 | Al Bayda | 3/3 | Al Bayda | 3/3 |
| Marib | Marib City | 175 | 5000 | 37000 | 93792 | 118192 | 178092 | Marib | 8/9 | Aden | 8/10 | Aden | 10/11 |
| Taizz | Mawza | 1100 | NA | NA | NA | 119212 | NA | Aden | 3/3 | Aden | 3/3 | Aden | 3/3 |
| Hajjah | Najrah | 675 | 2500 | 14950 | NA | 50286 | 109236 | Al Hudaydah | 3/3 | Sana'a | 2/3 | Sana'a | 2/3 |
| Al Dhale'e | Qa'atabah | 1150 | 6000 | 34274 | NA | 127250 | 208824 | Aden | 8/8 | Aden | 6/6 | Aden | 11/11 |
| Hajjah | Qafil Shamer | 560 | 3000 | 16452 | 31088 | 39288 | 91540 | Hajjah | 3/4 | Hajjah | 4/6 | Hajjah | 6/6 |
| Lahj | Radfan | 1200 | 2200 | NA | NA | 124317 | NA | Aden | 2/3 | Aden | 3/3 | Aden | 3/3 |
| Taizz | Sabir Al Mawadim | 1250 | 1700 | 21555 | 123200 | 124200 | 192055 | Aden | 3/3 | Aden | 3/3 | Aden | 3/3 |
| Taizz | Salh | 1263 | 4000 | 30312 | 162325 | 138325 | 239937 | NA | NA | Aden | 5/6 | Aden | 5/6 |
| Hadramaut | Tarim | 1100 | 5000 | 37330 | 138600 | 155600 | 226530 | Hadramawt | 3/3 | Hadramawt | 3/3 | Hadramawt | 2/3 |
| Lahj | Tuban | 1090 | 2500 | 23075 | NA | 132594 | 206269 | Aden | 5/5 | Aden | 3/5 | Aden | 3/5 |
| Lahj | Yafa'a | 1100 | NA | NA | NA | 132562 | NA | Aden | 3/3 | Aden | 3/3 | Aden | 3/3 |
| Al Hudaydah | Zabid | 1000 | NA | NA | 49600 | 53280 | NA | Al Hudaydah | 3/3 | Al Hudaydah | 3/3 | Al Hudaydah | 3/3 |

*The cheapest type of bean (dry or canned) is used to calculate the total SMEB. Includes lumpsum

^If the number is 4/10 (e.g.), this indicates that 10 vendor KIs were interviewed, and of this, 4 answered the supply question.

The supplier governorate indicates the most prevalent answer. In the case of a tie, both governorates are shown.

The table shows SMEB values and supply chains inside the same governorate and towards other governorates. Districts without a main supplier are those districts where vendor KIs could not identify the origin of the items they sold.

APPENDIX

What is the cash and markets working group (CMWG)?

With the emergence of the conflict in 2014, humanitarian actors in Yemen began using cash and vouchers as a response tool to meet the immediate needs of the Yemeni population. The CMWG was established to provide a platform for discussion and setting standards/recommendations on cash and market-based responses (inclusive of cash and vouchers) for the cash actors in Yemen. The JMMI was developed by the CMWG, the WASH Cluster, and REACH in order to harmonize price monitoring amongst WASH actors in Yemen.

Additional information on methodology

To be assessed by the JMMI, markets must be either a single permanent market, or a local community where multiple commercial areas are located in close proximity to one another. When possible, markets/shops are selected within a single geographical location, where there is at least one wholesaler operating in the market. Participating organisations train their enumerators on the JMMI methodology and data collection tools using standard training materials developed by REACH. Each month, enumerators conduct KI interviews with market vendors to collect three price quotations for each item from the same market in each district. In addition to price levels, vendors are asked about the location of their supplier, the number of days it takes to restock the items, and the constraints they are facing in purchasing and selling the items in question. Additional questions are included for water trucking, to gauge the impact of delivery distance upon price level.

Following data collection, REACH compiles and cleans all partner data, normalising prices and cross-checking outliers. The cleaned data is then analysed by commodity and by governorate. To illustrate local variations in prices and availability, REACH uses the collected data to map the price of each type of item in each district. REACH also calculates the WASH SMEB (Survival Minimum Expenditure Basket), which is composed of four items: soap (1.05 kg), laundry powder (2 kg), sanitary napkins (50 units) and water trucking (3.15 m3). Food SMEB contains 75 kg of wheat flour, 10 kg of beans (kidney), 8L of vegetable oil, 2.5 kg of sugar, and 1 kg iodized salt. As per October 2021, the cheapest type of bean (dry or canned) is used per district to calculate total/food SMEB. SMEB values calculated exclusively with dried beans, or canned beans, can be found on the [Interactive Dashboard](#) and on page 10-11 of this Situation Overview.

The cleaned data sets are available on the [REACH Resource Centre](#)

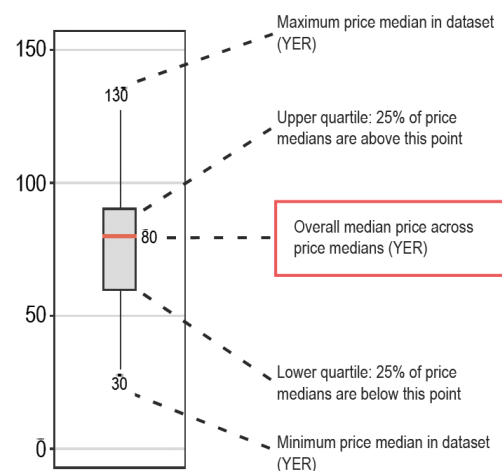
Calculation of district and governorate median price

Per October 2021, governorate and national level data (including SMEBs) is aggregated from the district medians of the respective districts assessed in a given month. District medians are aggregated using data from the key informants within that district. Previously, all aggregations drew on the key informant level data. This change in calculation methodology will result in different findings than previous Situation Overviews. It is recommended to refer to the [Interactive Dashboard](#) for longitudinal trends and historic data, as past data is harmonized here with the methodological improvements. Percentage changes from one month to another are calculated only on data from markets that were assessed in both consecutive months. Therefore, part of the percentage variation could be attributed to changes in monthly coverage.

Limitations

Due to issues of access, security and partner capacity, the districts included in the JMMI vary on a monthly basis. As such, findings are indicative for the locations assessed and not geographically representative for the whole of Yemen. Consequentially, there are sometimes a limited number of districts for which trends can be assessed over time. Finally, the market monitoring process has been coordinated remotely by REACH, which inherently presents some challenges in terms of coordination and follow-up with partners.

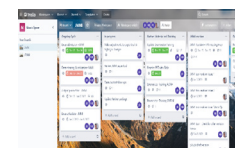
How to read a box plot



ABOUT REACH

REACH is a joint initiative that facilitates the development of information tools and products that enhance the capacity of aid actors to make evidence-based decisions in emergency, recovery and development contexts. By doing so, REACH contributes to ensuring that communities affected by emergencies receive the support they need. All REACH activities are conducted in support to and within the framework of inter-agency aid coordination mechanisms. For more information, please visit our website at www.reach-initiative.org, contact us directly at nissa.berntsen@reach-initiative.org or follow us on Twitter at [@REACH_info](https://twitter.com/REACH_info).

Participating partners include



Tamdeen
Youth Foundation
مؤسسة تمدين شباب



Number of districts assessed per governorate

| Governorate | Assessed districts |
|-------------|--------------------|
| Abyan | 1 |
| Aden | 5 |
| Al Dhale'e | 3 |
| Al Hudaydah | 8 |
| Al Jawf | 1 |
| Al Mahwit | 1 |
| Amran | 2 |
| Dhamar | 1 |
| Hadramaut | 2 |
| Hajjah | 9 |
| Ibb | 1 |
| Lahj | 9 |
| Marib | 1 |
| Sana'a | 1 |
| Sana'a City | 3 |
| Shabwah | 1 |
| Taizz | 13 |

