



Mingkaman Snapshot

Awerial County, Lakes State, South Sudan

South Sudan Displacement Crisis

December 2015

Summary

Following the outbreak of violence in December 2013, internally displaced persons (IDPs) started arriving in Mingkaman Site.

The situation is changing rapidly due to a recent influx of IDPs from Jonglei State. Demographic figures, trends and the sectoral overview will be updated as soon as new figures are available.

Data was provided by camp management (as of 28/11/2015), and spatial data was provided by REACH (as of 28/04/2015).

Site Overview

Site management: ACTED
Site population: 71,625
Accommodations*: 12,349 structures
Planned capacity: over 12,000 structures
Site area: 19,314,284 m²
IDP County of origin
1st largest group Bor South County
Other large groups Awerial

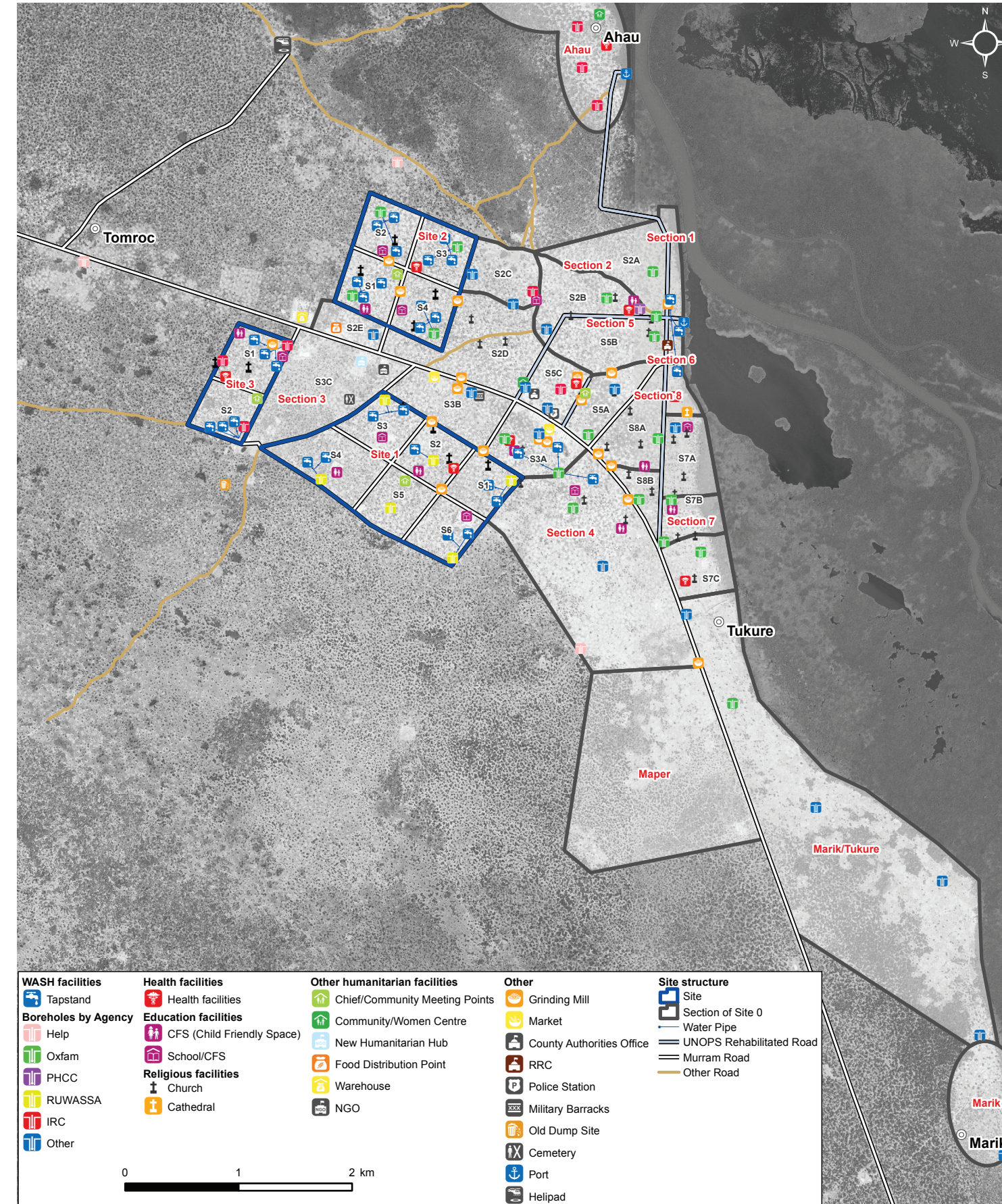
* Shelter count as of 8-12 February 2015

Location Map



Mingkaman Site Map

Lat: 6.044 Long: 31.510



Implementing Agencies

- EDUCATION** NRC, SCI
- FOOD** WFP, ACTED, Plan International
- HEALTH** WHO, Health Link, IMC, UNFPA, CCM
- PROTECTION** UNHCR, ACTED, IMC
- SHELTER / NFI** HDC
- WASH** RUWASSA, HELP, CRS, ACTED

CCCM Mechanisms

The following structures are in place:

- ☒ **Community chiefs**
- ☒ **Women's committee**
- ☒ **Joint youth association**
- ☒ **Community policy group**
- ☒ **Hotline & complain desk**

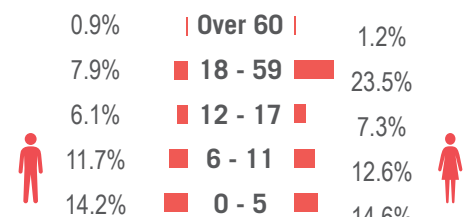
Reported Priority Needs

Priority needs were reported and ranked by camp management as:

- 1 Education**
- 2 IDPs registration by IOM**
- 3 Capacity building of local authorities**

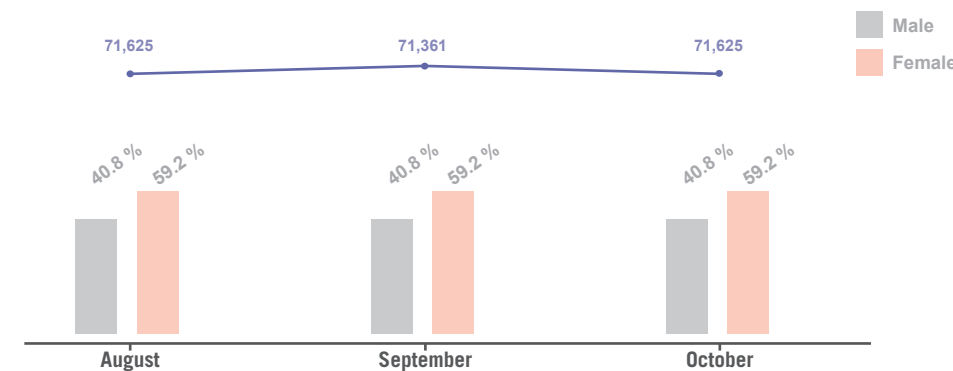
Demographics

40.8% male / 59.2% female**



** Population figure by IOM (as of 04 Nov 2015)

Demographic Trends***



*** Figure extracted from the DTM. No extra data / information was available.

Sectoral Overview

		Target****	Achieved	
Food	Food accessible on-site	Yes	Yes	●
	Markets physically accessible from site	Yes	Yes	●
Health	Health services are available on-site or within walking distance	Yes	Yes	●
Shelter	Average open area per person	min. 30 m ²	270 m ²	●
	% of families living in rakoobas/tukul	min 75%	less than 25%	●
	% of families living in makeshift shelters	0%	more than 75%	●
	Average number of individuals per tent	max 5	5.8	●
Water Sanitation	Average covered area per person*****	min 4.2 m ²	2.1 m ²	●
	Liters of water available per person per day	min 15 L	10-15 L	●
	# of persons per latrine (m/f)	max 20	28	●
	# of persons per shower (m/f)*****	max 20	N/A	●

**** Targets are based on minimum standards agreed with the CCCM Cluster ● Target reached, ● Target more than 50% reached, ● Target less than 50% or not at all reached, ● No data

***** Mingkaman site shelters averagely measure 12 m²

***** The exact figure for the number of persons per shower was not available. Indeed, few partners' projects have addressed this need. IDPs have reportedly started to build showers by their own, but it was not possible to count them.