



Melut - IDP Intentions Assessment

Melut, Upper Nile, South Sudan

South Sudan Displacement Crisis

December 2015

Methodology

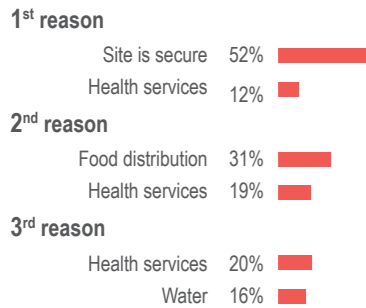
The UNMISS Melut Protection of Civilians (POC) Site was established in December 2013 following the outbreak of violence.

These findings are based on primary data collected by REACH on the 22nd and 23rd of November 2015.

REACH staff interviewed IDPs in Melut to understand where they have come from, where they would go if they were able to leave, and what push and pull factors inform their decisions. All households (88) were interviewed.

Decision making factors

Top three factors for still living in current displacement site



Peace agreement

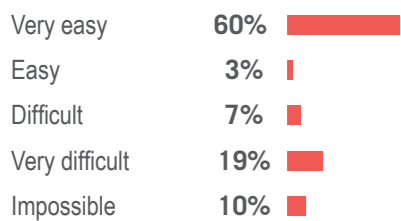
52% of total IDPs reported being aware of the peace agreement signed between the SPLA and the SPLA-IO

74% of total IDPs aware of the peace agreement said it would have an influence on their decision to leave the PoC

82% of total IDPs influenced by the peace agreement said that it is a strong incentive to move out of the PoC

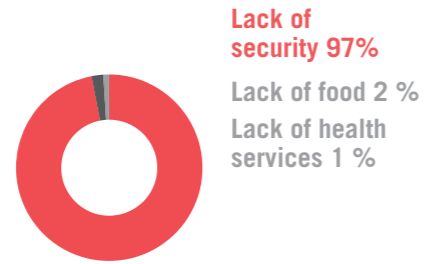
Social cohesion

Expected ease of coexistence with host community in first selected return location

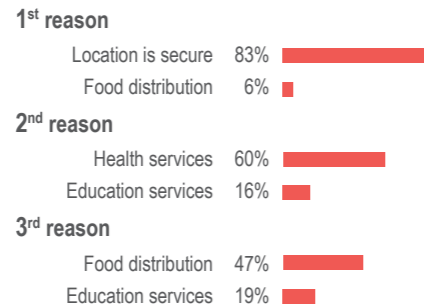


Causes of Displacement

Primary reported reasons for leaving pre-crisis homes



Top three factors in preferred first return location that would enable return



Peace factors

Top reported events to contribute to peace in preferred first return location

	1 st	2 nd	3 rd
Official ceremony	45%	15%	14%
Peace agreement	12%	26%	11%
Traditional ceremony	28%	24%	18%
In-kind exchange	6%	22%	28%
Monetary exchange	6%	10%	23%
Inter-tribe marriages	0%	0%	1%
Cattle routes	1%	2%	5%

Access to information

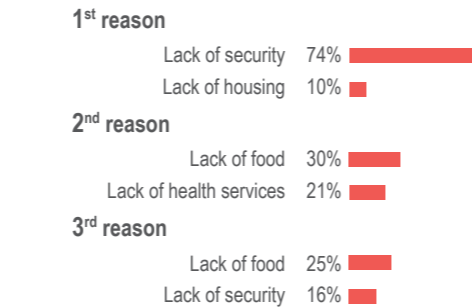
Last time IDPs received information of their first selected return location



Primary reasons for selecting current displacement site



Top three factors in preferred first return location that would prevent return



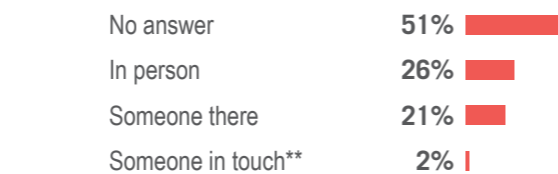
Meaning of security

83% of IDPs who mentioned security as a preventative factor define security as "The absence of fighting" in their preferred first return location

Peaceful environment

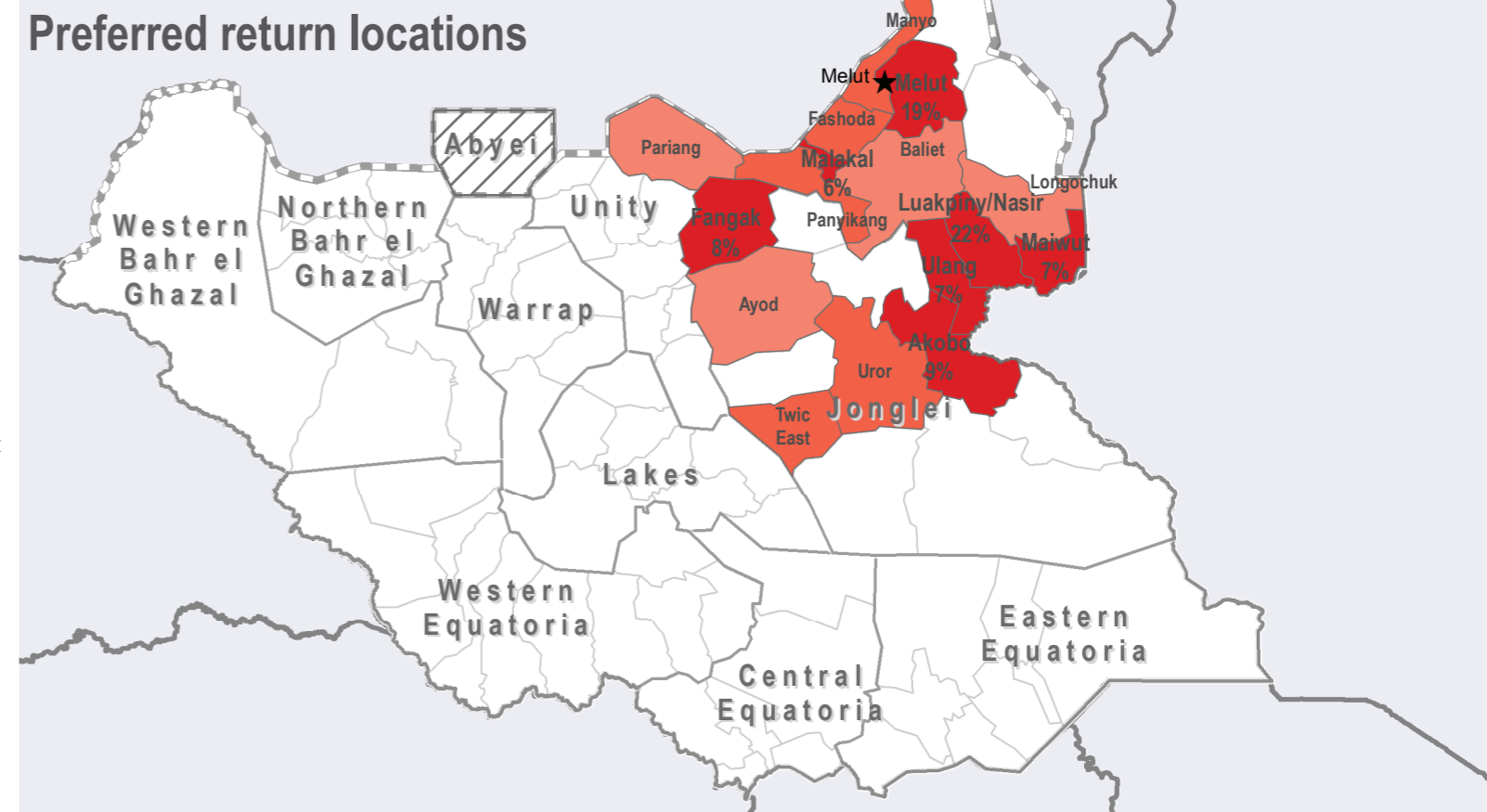
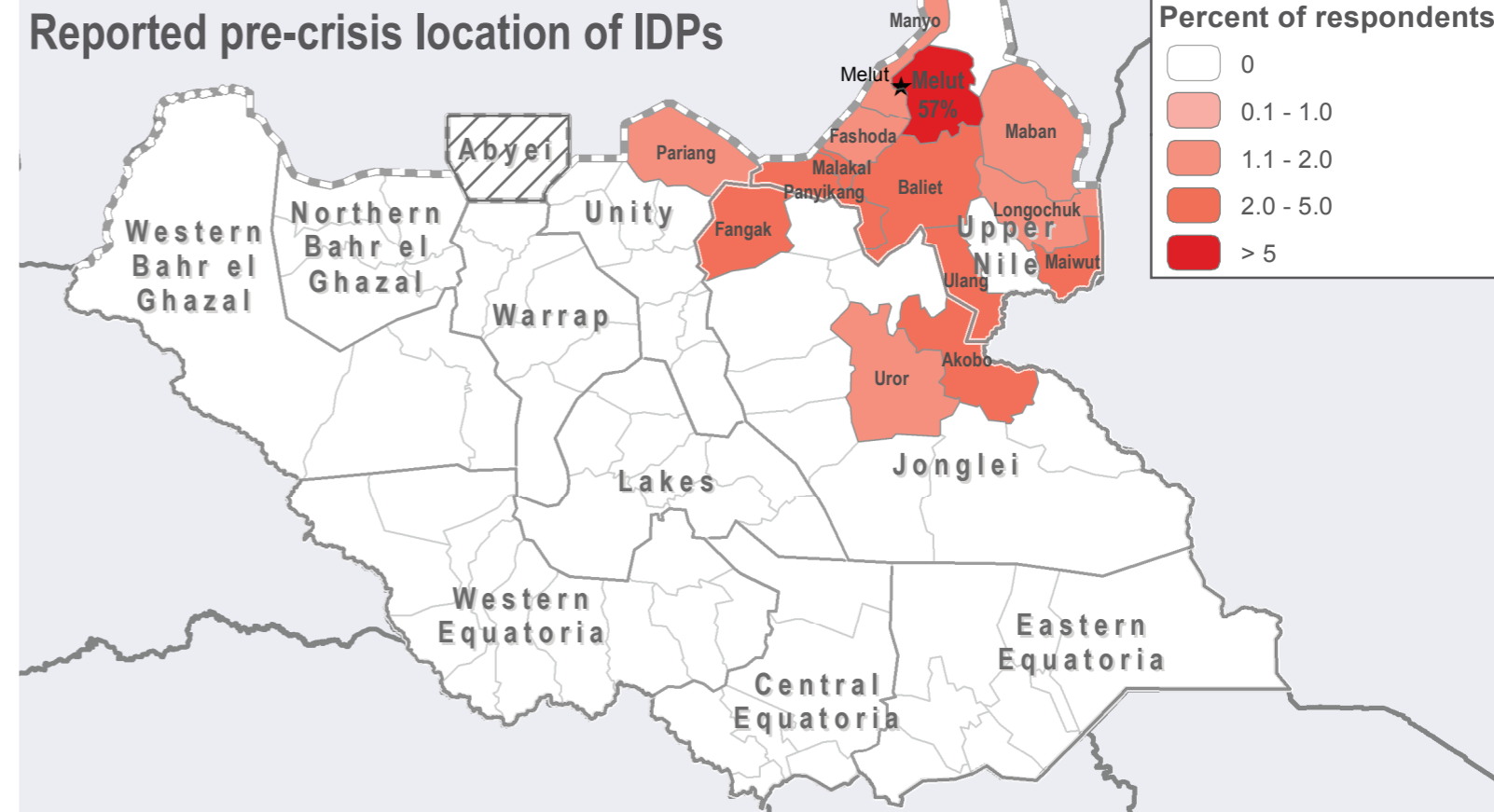
78% of IDPs said that the perception of peaceful environment in their preferred first return location would be a strong incentive to move out of the PoC

Way of accessing information about first selected return location



IDP pre-displacement locations and areas of desired return

31.60 E, 6.18 N



* total is not equal to 100% as 1% answered there were no key factors ** From someone who is in touch over phone/satellite/internet



CCCM CLUSTER
SUPPORTING DISPLACED COMMUNITIES

For more information on this profile please contact:
REACH Initiative, southsudan@reach-initiative.org

REACH Informing more effective humanitarian action