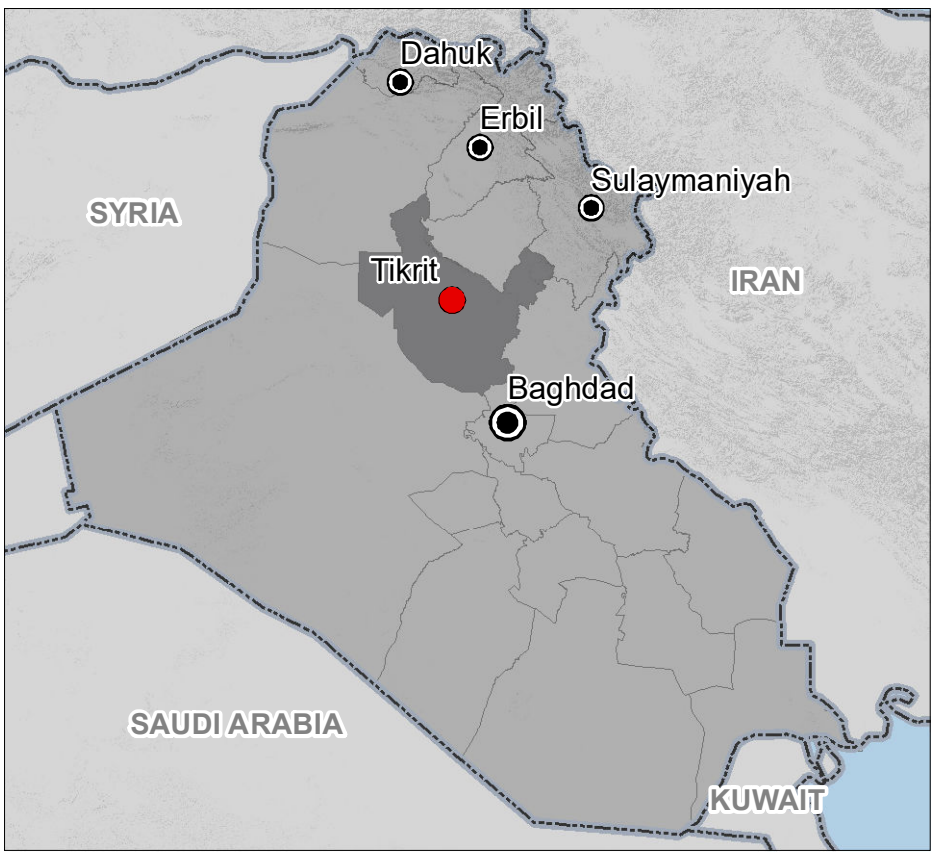
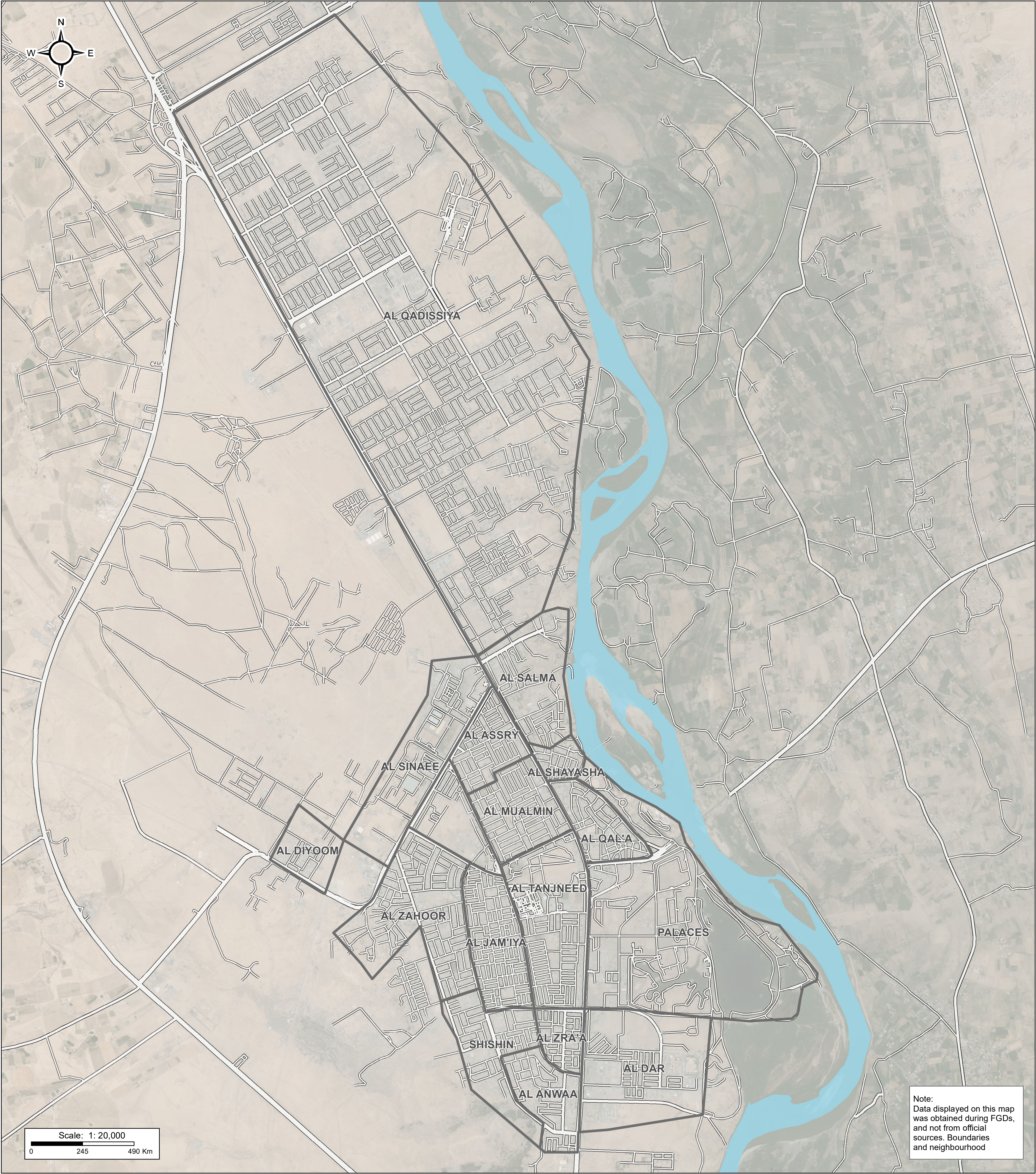


# IRAQ - Salah Al-Din Governorate - Tikrit City

As of April 2018

For Humanitarian Purposes Only  
Production date : 11 April 2018

REFERENCE MAP



- Neighbourhood
- Primary Road
- Secondary Road
- River

Neighbourhood: REACH, OSM, Wikimapia  
Administrative boundaries: GADM  
Roads: OSM  
Water Area: OCHA  
  
Satellite Imagery: WV02 from  
21/07/2016  
Copyright: Digital Globe  
Source: ESRI  
  
Projection: WGS 1984 UTM Zone 38N  
Contact : [iraq@reach-initiative.org](mailto:iraq@reach-initiative.org)  
File: IRQ\_Map\_Tikrit\_City\_Reference  
\_11Apr2018  
  
Note: Data, designations and boundaries contained on this map are not  
warranted to be error-free and do not imply acceptance by the REACH  
partners, associated, donors mentioned on this map.