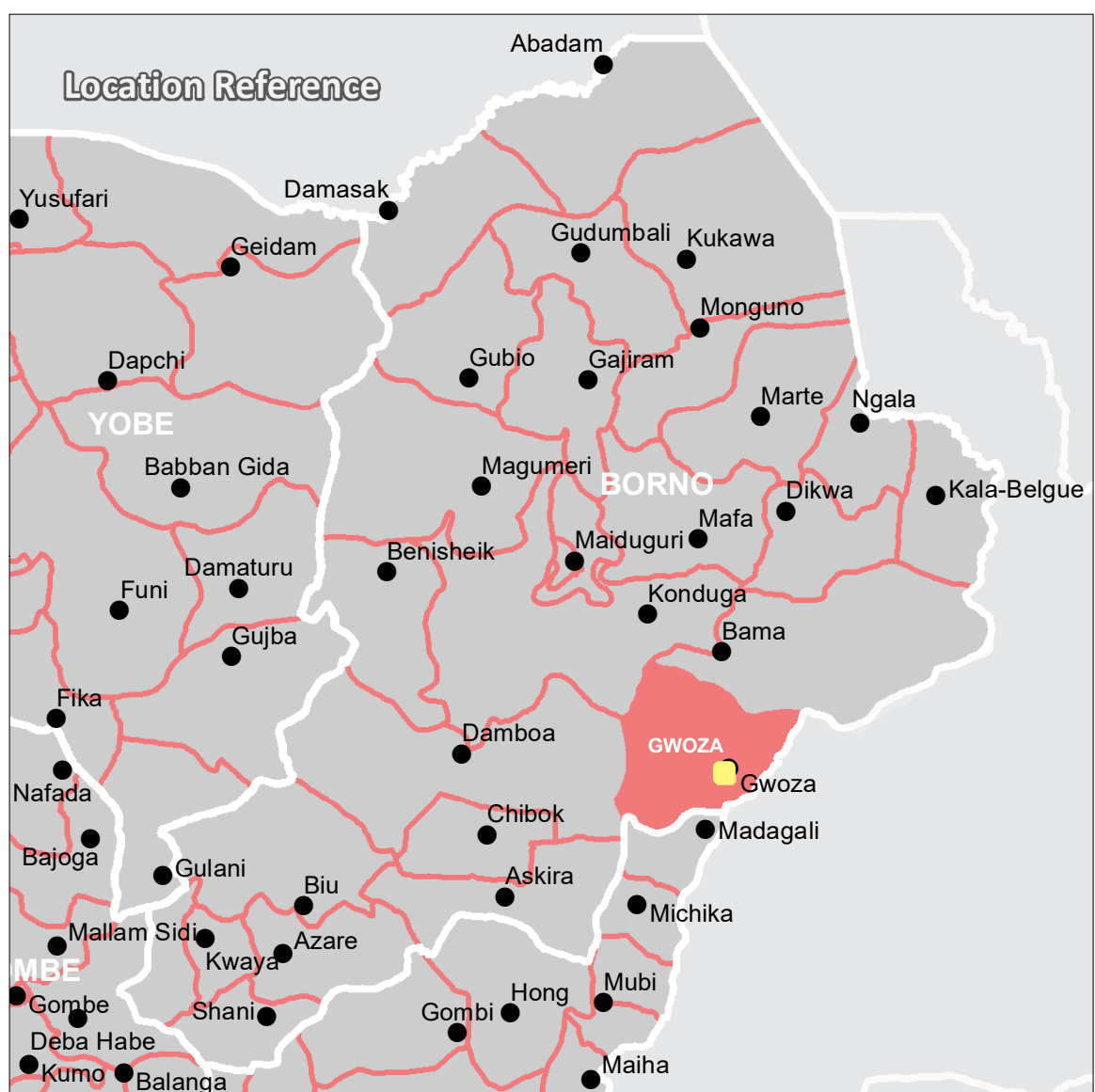
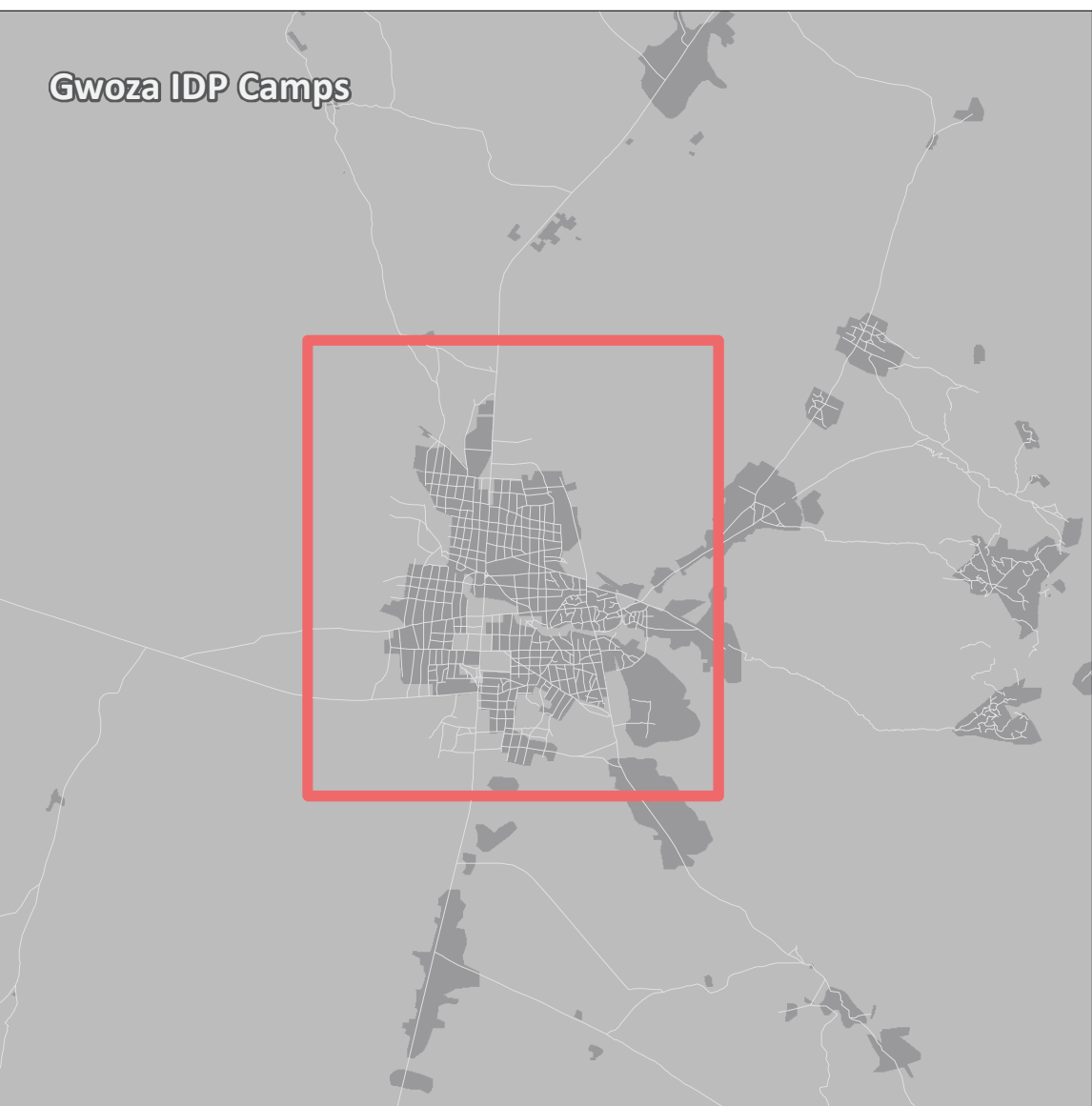
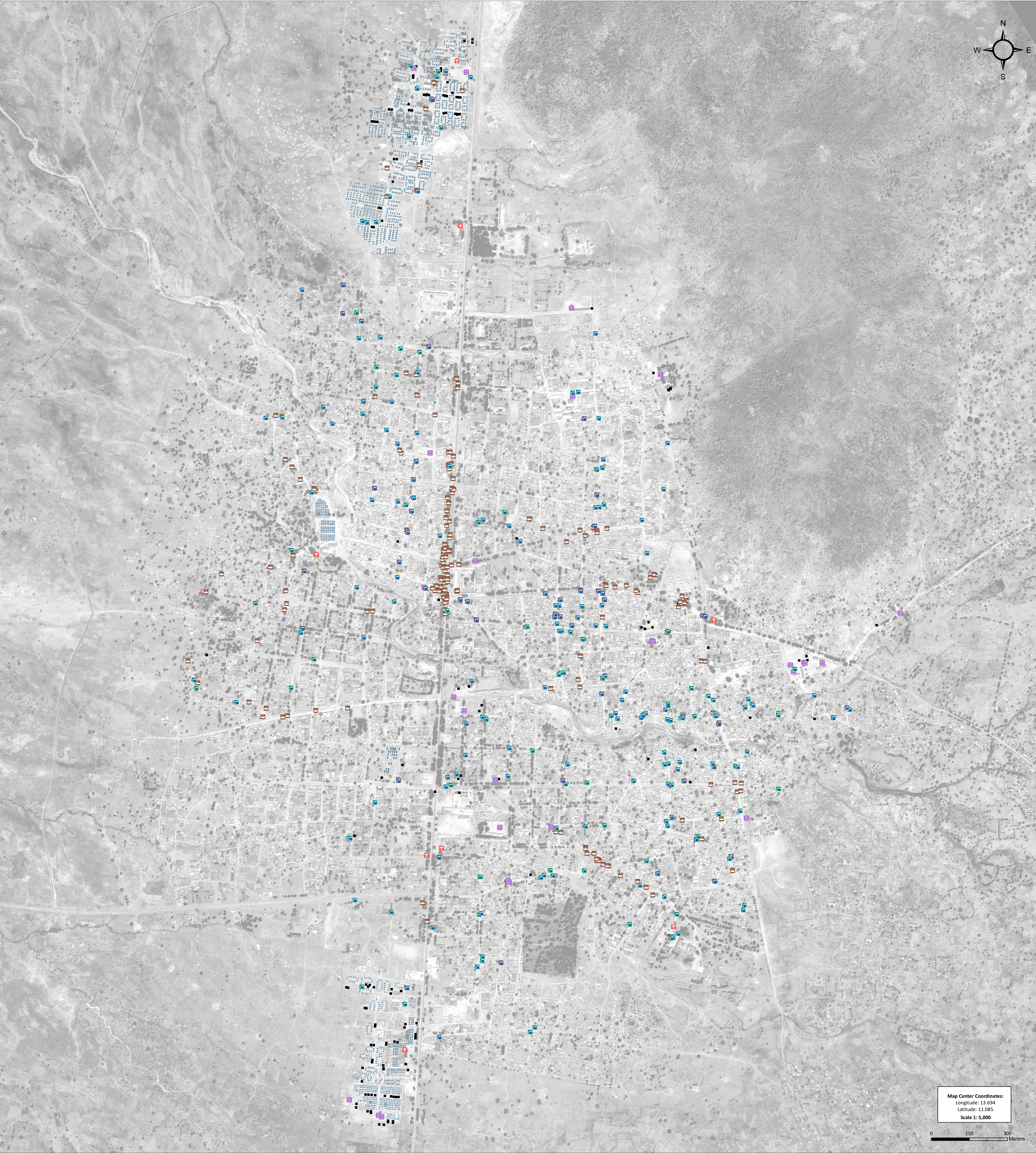


# NIGERIA - Borno State - Gwoza LGA Settlement Profiling

## General Infrastructure - As of October 2018

For Humanitarian Purposes Only  
Production date :10 Jan 2019



### Infrastructure

- Water Point (Fully/Partially Functional) (203)
- Water Point (Not Functional) (55)
- School (28)
- Market (197)
- Health Center (10)
- Latrines (163)
- Shelters and Tents (2,067)

Camp infrastructure: REACH Initiative, October 2018  
Administrative boundaries: OCHA  
Satellite Imagery: GeoEye-1, 30 November 2018,  
©2018 DigitalGlobe  
Source: Humanitarian Information Unit, NextView License  
Projection: WGS 1984  
File:  
REACH\_NGA\_Map\_LGA\_Profiling\_Infrastructure\_Gwoza\_11Jan2019\_A0  
Contact : reach.nigeria@reach-initiative.org

Note: Data, designations and boundaries contained on this map are not warranted to be error-free and do not imply acceptance by the REACH partners, associates or donors mentioned on this map.



Funded by  
European Union  
Civil Protection and  
Humanitarian Aid

**REACH** An initiative of  
IMPACT Initiatives  
ACTED and UNOSAT