

ASSESSMENT OF HARD-TO-REACH AREAS: EDUCATION AND SHELTER

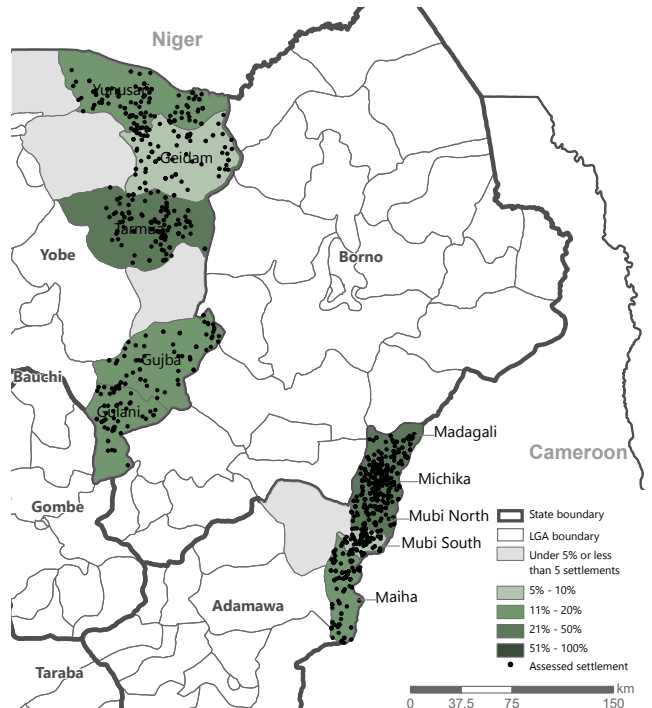
Adamawa and Yobe, Northeast Nigeria

April-June 2022

INTRODUCTION

The continuation of conflict in Northeast Nigeria has created a complex humanitarian crisis, rendering sections of Yobe and Adamawa states as hard to reach. To address information gaps facing the humanitarian response and inform humanitarian actors on the demographics of households in hard-to-reach areas of Northeast Nigeria, as well as to identify their needs, access to services, and movement intentions, REACH has been conducting monthly assessments of hard-to-reach areas in Northeast Nigeria since November 2018.¹

Proportion of settlements assessed, April - June 2022.



of key informant interviews: **1562**
 # of assessed settlements: **882**
 # of assessed LGAs: **14**
 # of assessed LGAs with sufficient coverage²: **10**

Number of assessed settlements per LGA

STATE	LGA	# of assessed settlements
ADAMAWA	Madagali	63
	Maiha	77
	Michika	156
	Mubi North	70
	Mubi South	66
YOBE	Geidam	95
	Gujba	77
	Gulani	61
	Tarmua	111
	Yunusari	106

METHODOLOGY

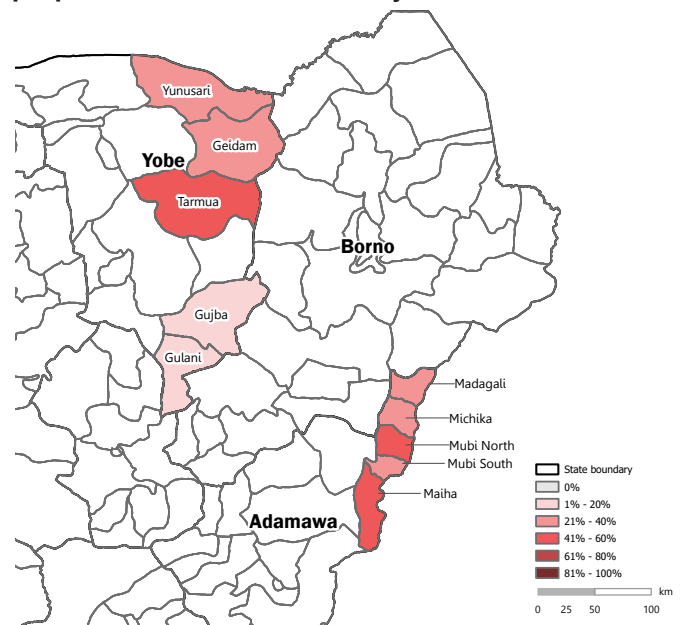
Using the Area of Knowledge (AoK) methodology, REACH remotely monitors the situation in hard-to-reach areas through monthly multi-sector interviews in accessible Local Government Area (LGA) capitals with key informants (KIs) who are either (1) newly arrived internally displaced persons (IDPs) who have left a hard-to-reach settlement in the last month or (2) KIs who have had contact with someone living or having been in a hard-to-reach settlement in the last month (traders, migrants, family members, etc.).

If not stated otherwise, the recall period for each question is set to one month prior to the last information the KI has had from the hard-to-reach area. Selected KIs are purposively sampled and are interviewed on settlement-wide circumstances in hard-to-reach areas, rather than their individual experiences. Responses from KIs reporting on the same settlement are then aggregated to the settlement level. The most common response provided by the greatest number of KIs is reported for each settlement. When no most common response could be identified, the response is considered as 'no consensus'. While included in the calculations, the percentage of settlements for which no consensus was reached is not displayed in the results below.

Results presented in this factsheet, unless otherwise specified, represent the proportion of settlements assessed within an LGA. Findings are only reported on LGAs where at least 5% of populated settlements and at least 5 settlements in the respective LGA have been assessed. **The findings presented are indicative of broader trends in assessed settlements in April, May, & June 2022, and are not statistically generalisable.**³ Due to precautions related to the COVID-19 outbreak, data was collected remotely through phone interviews with assistance from local stakeholders. Data collection took place from 11th April 2022 to 30th June 2022.

Access to education

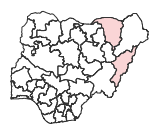
Proportion of assessed settlements where it was reported that people **did not** have access to any education services:



¹ REACH H2R sectoral factsheets from [November 2020 to April 2022](#).

² The most recent dataset on grid3.gov.ng/datasets has been used as the reference for settlement names and locations, and adjusted to account for deserted villages based on information shared by OCHA.

³ Due to changes in migration patterns, the specific settlements assessed within each LGA vary each month. Changes in results reported in this factsheet, compared to previous factsheets, may therefore be due to variations in the assessed settlements instead of changes over time.



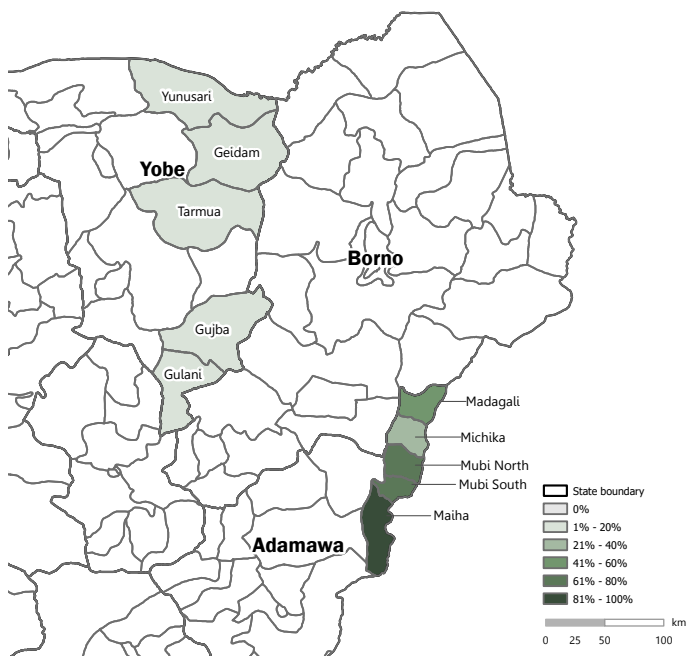
ASSESSMENT OF HARD-TO-REACH AREAS: EDUCATION AND SHELTER

Adamawa and Yobe, Northeast Nigeria

April-June 2022

Access to education

Proportion of assessed settlements where it was reported that people had access to any formal education services:



In **32%** of assessed settlements, KIs reported that people were not able to access any education facilities.

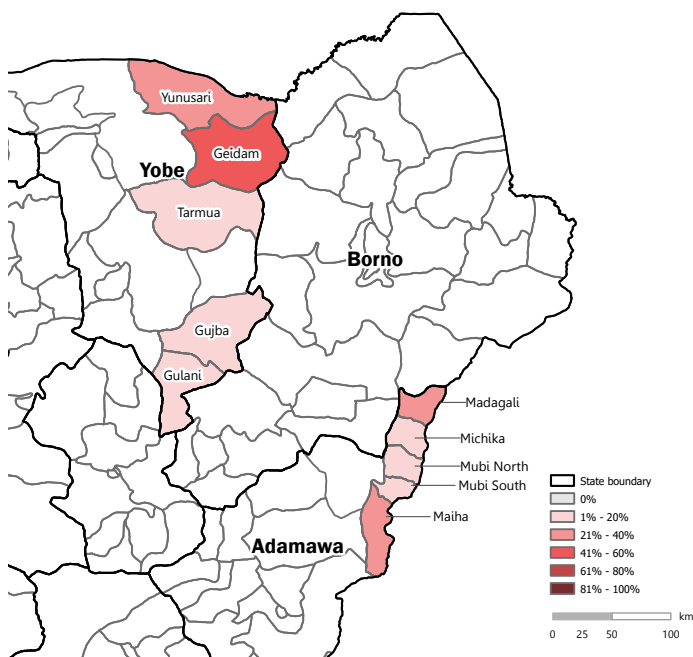
In those settlements, the most reported main reasons preventing access to education were:

There were never any facilities nearby	69%	
Teachers have been displaced/stopped working	11%	
Security concerns for children	5%	
Facilities destroyed by natural disaster	4%	
Facilities destroyed by conflict	3%	

Access to education facilities was reported in **68%** of assessed settlements. In **27%** of those settlements, people were reported to have access to **formal education** services.

Shelter and non-food items (NFI)s

Proportion of assessed settlements where it was reported that at least one shelter had been damaged or destroyed by conflict in the month prior to data collection:



Reported main shelter type, by % of assessed settlements:

Makeshift	66%	
Permanent	25%	

Reported main shelter location of people in assessed settlements, by % of assessed settlements:

Original home	59%	
Makeshift home	23%	
Abandoned building	6%	

Most commonly reported NFI needs, by % of assessed settlements:

Sleeping mat	88%	
Cooking pot	85%	
Bucket	54%	
Jerry can	43%	
Mosquito net	43%	