



South Sudan - Camp Coordination and Camp Management

South Sudan Displacement Crisis

Assessment of Hard-to-Reach Areas in South Sudan

November 2019

Overview

The continuation of conflict since December 2013 has created a complex humanitarian crisis in the country, restricting humanitarian access and hindering the flow of information required by aid partners to deliver humanitarian assistance to populations in need. To address information gaps facing the humanitarian response in South Sudan, REACH employs its Area of Knowledge (AoK) methodology to collect relevant information in hard-to-reach areas to inform humanitarian planning and interventions outside formal settlement sites.

Using the AoK methodology, REACH remotely monitors needs and access to services in the Greater

Upper Nile, Greater Equatoria and Greater Bahr el Ghazal regions. AoK data is collected monthly and through multi-sector interviews with the following typology of Key Informants (KIs):

- KIs who are newly arrived internally displaced persons (IDPs) who have left a hard-to-reach settlement in the last month
- KIs who have been in contact with someone living in a hard-to-reach settlement, or have been visiting one in the last month (traders, migrants, family members, etc.)
- KIs who are remaining in hard-to-reach settlements, contacted through phone

Selected KIs are purposively sampled and have knowledge from within the last month about a specific settlement in South Sudan, with data collected at the settlement level. About half of settlements assessed have more than one KI reporting on the settlement. In these cases, data is aggregated at the settlement level according to a weighting mechanism, which can be found in the Terms of Reference (ToRs).

[\(Link to AoK Terms of Reference \)](#)

All percentages presented in this factsheet, unless otherwise specified, represent the proportion of settlements assessed with that specific response.

The findings presented in this factsheet are indicative of the broad trends relevant to CCCM (Camp Coordination and Camp Management) in assessed settlements in November 2019, and are not statistically generalisable.

Assessment Coverage

2,725 Key Informants interviewed

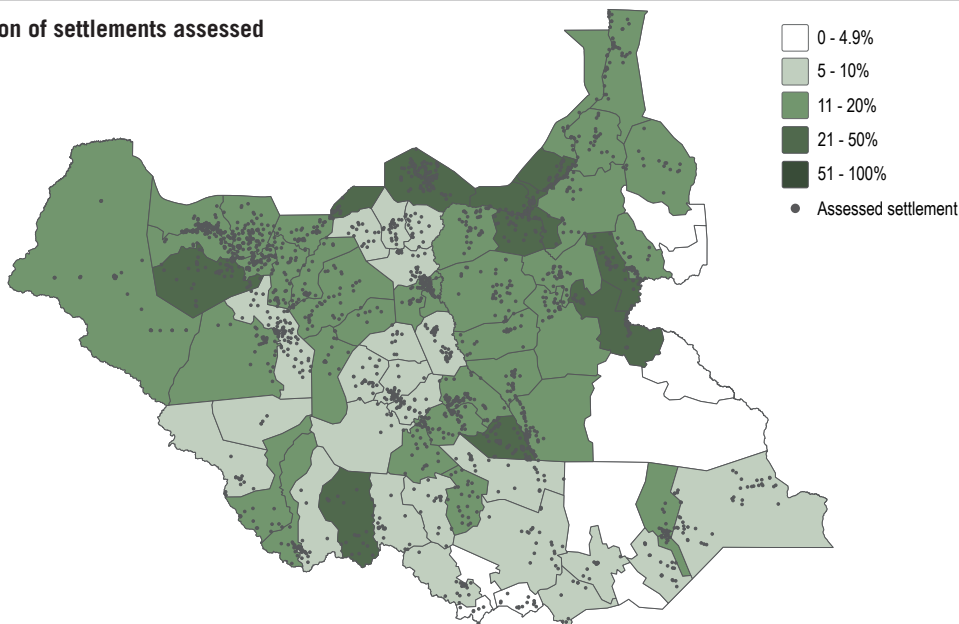
2,155 Settlements assessed

71 Counties assessed

69 Counties with 5% or more coverage¹

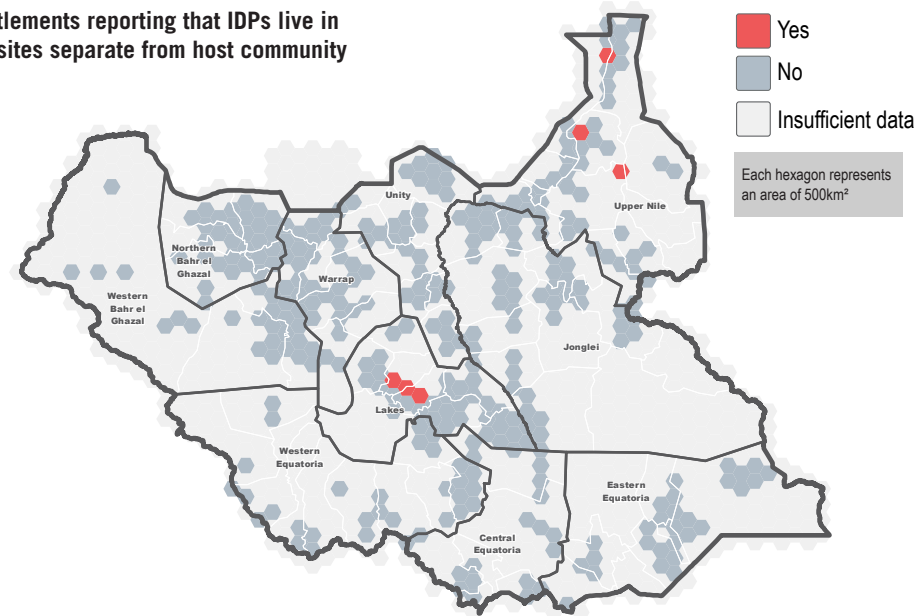
Assessment coverage

Proportion of settlements assessed



IDPs and IDP returnees Presence

Assessed settlements reporting that IDPs live in informal IDP sites separate from host community



¹Data is only represented for counties in which at least 5% of settlements have been assessed. The most recent OCHA Common Operational Dataset (COD) released in March 2019 has been used as the reference for settlement names and locations.

Given limitations in analyzing data using sub-county administrative boundaries in South Sudan, the country was divided into 500km² hexagon grids for analytical and display purposes. The distance between the opposite sides of each hexagon represents 15km, approximating one day's walking distance as well as the size of a basic service unit.



South Sudan - Camp Coordination and Camp Management

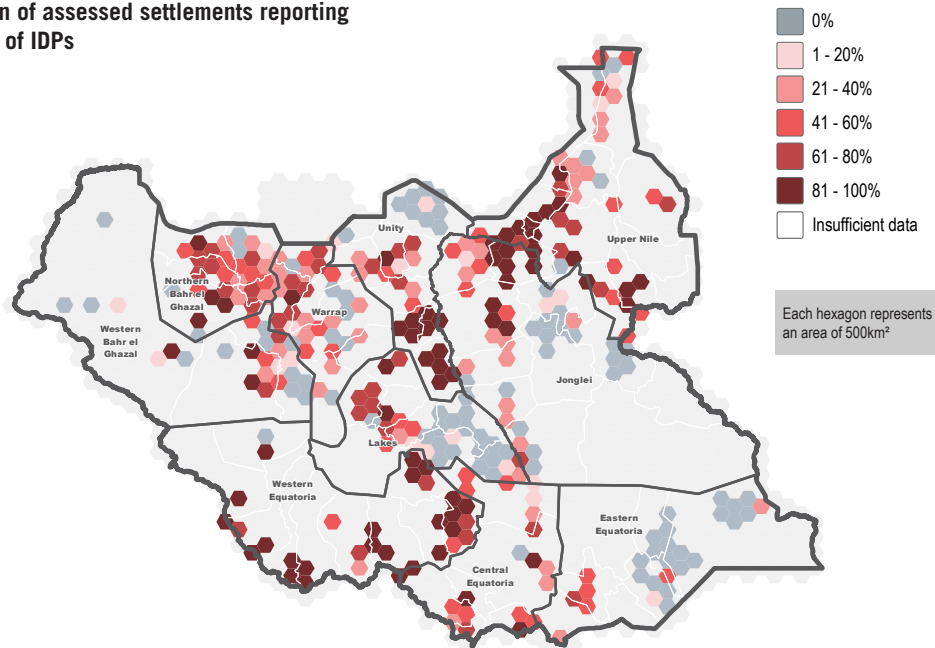
South Sudan Displacement Crisis

Assessment of Hard-to-Reach Areas in South Sudan

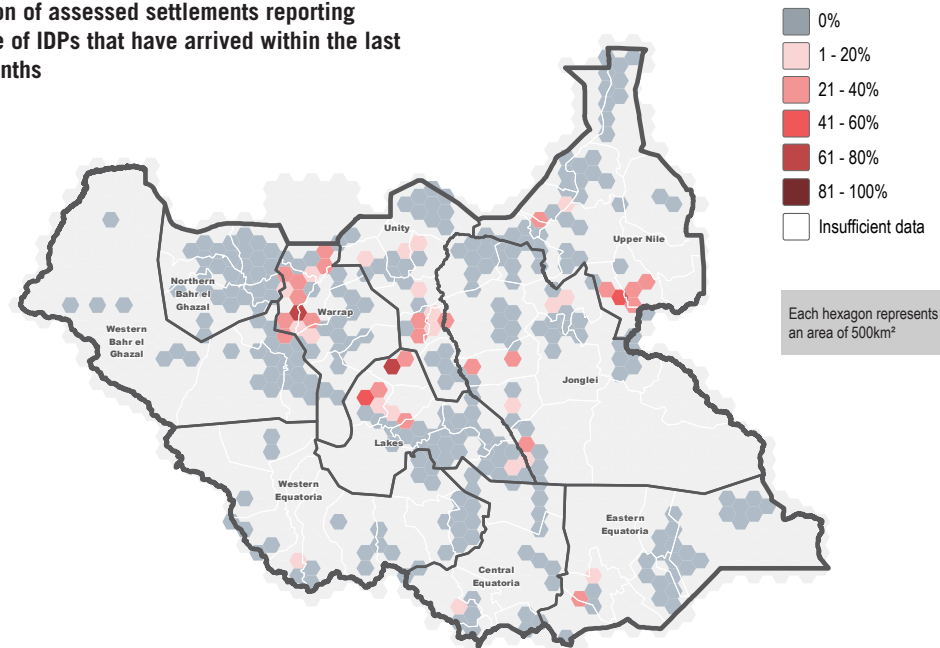
November 2019

Displacement and Population Movement

Proportion of assessed settlements reporting presence of IDPs



Proportion of assessed settlements reporting presence of IDPs that have arrived within the last three months



Proportion of IDPs

Top five counties where the highest proportion of assessed settlements reported that half or more of the population consists of IDPs that have arrived within the last three months

Gogrial West	40%	■
Cueibet	15%	■
Ulang	13%	■
Gogrial East	11%	■
Twic	11%	■

Lack of IDP support

Top five counties where the highest proportion of assessed settlements reported that IDPs have arrived within the last three months and that local community resources are not being shared with IDPs

Rumbek North	13%	■
Guit	6%	■
Rumbek East	4%	■
Twic	3%	■
Leer	3%	■

Food distribution absence

Top five counties where the highest proportion of assessed settlements reported that IDPs have arrived within the last three months and that food assistance is inaccessible

Gogrial West	25%	■
Duk	17%	■
Magwi	13%	■
Luakpiny/Nasir	12%	■
Gogrial East	11%	■

NFIs distribution absence

Top five counties where the highest proportion of assessed settlements reported that IDPs have arrived within the last three months and that NFI assistance is inaccessible

Gogrial West	40%	■
Rumbek North	25%	■
Duk	22%	■
Gogrial East	14%	■
Rumbek Centre	13%	■



South Sudan - Camp Coordination and Camp Management

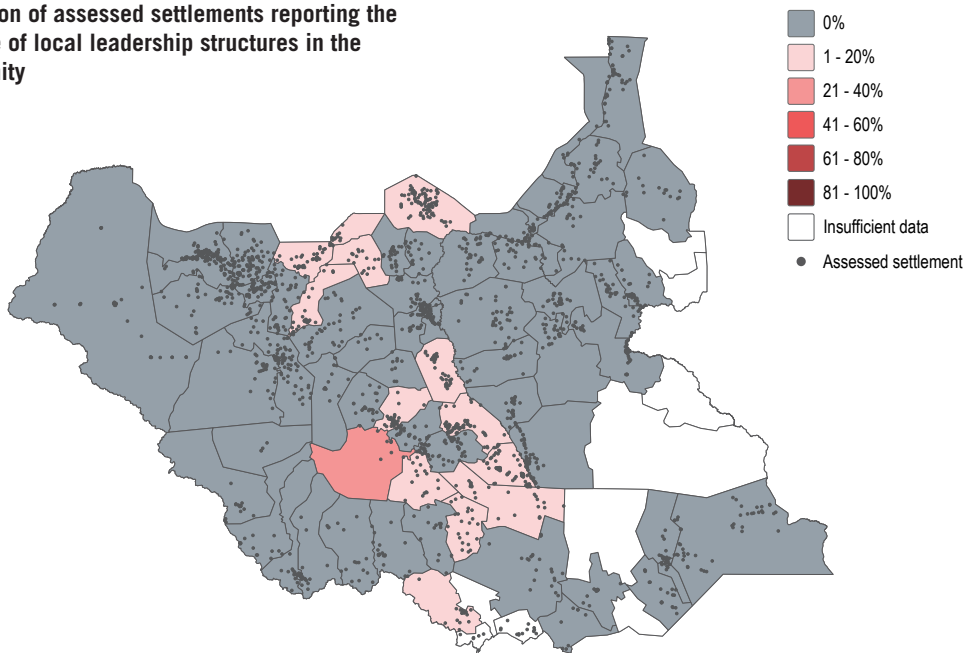
South Sudan Displacement Crisis

Assessment of Hard-to-Reach Areas in South Sudan

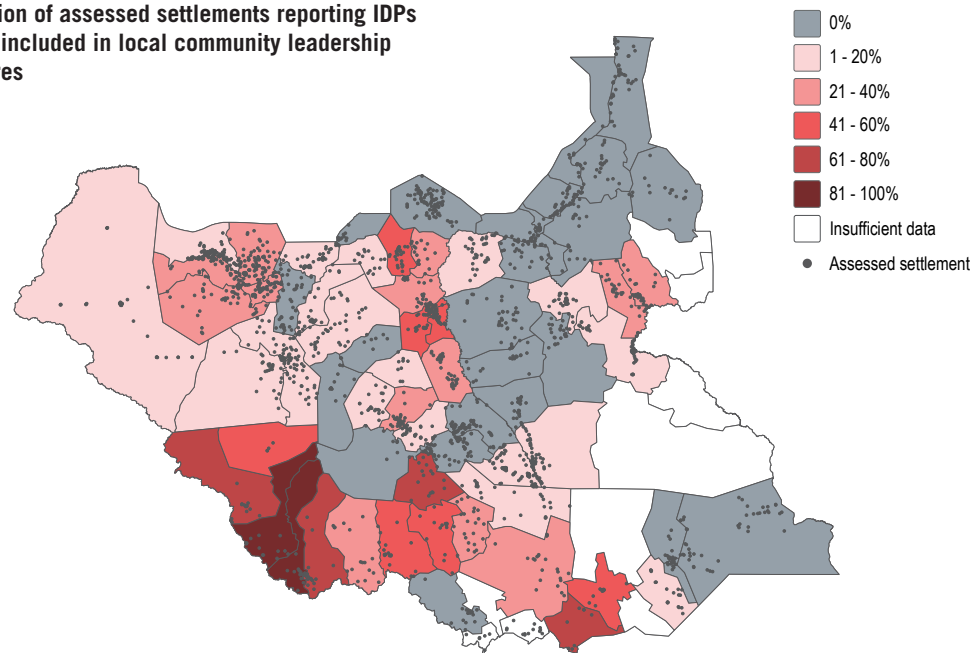
November 2019

Leadership Structures and IDP Representation

Proportion of assessed settlements reporting the absence of local leadership structures in the community



Proportion of assessed settlements reporting IDPs are not included in local community leadership structures



Information sources

Top five counties where the highest proportion of assessed settlements reported the main source of information is family/friends

Renk	70%
Melut	65%
Twic	61%
Abiemnhom	60%
Maban	60%

Top five counties where the highest proportion of assessed settlements reported the main source of information is aid workers/community mobilisers

Gogrial West	38%
Tonj East	38%
Aweil East	27%
Maban	27%
Melut	26%

IDP: Local authority access

Top five counties where the highest proportion of assessed settlements reported that IDPs are unable to access local authorities for support

Akobo	100%
Kapoeta North	100%
Kapoeta South	100%
Pariang	100%
Yirol West	100%

*There were no other assessed counties reporting 100% of IDPs unable to access local authorities for support.

Living conditions: IDPs

Top five counties where the highest proportion of assessed settlements reported IDPs are primarily living in temporary shelters or out in the open

Magwi	50%
Ulang	35%
Luakpiny/Nasir	31%
Duk	17%
Mayendit	17%



South Sudan - Camp Coordination and Camp Management

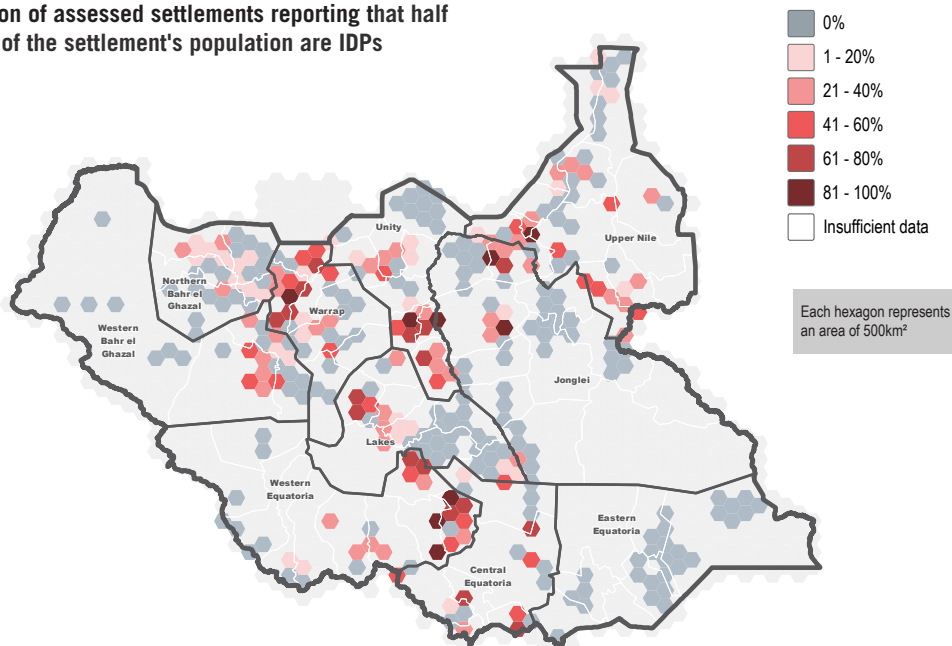
South Sudan Displacement Crisis

Assessment of Hard-to-Reach Areas in South Sudan

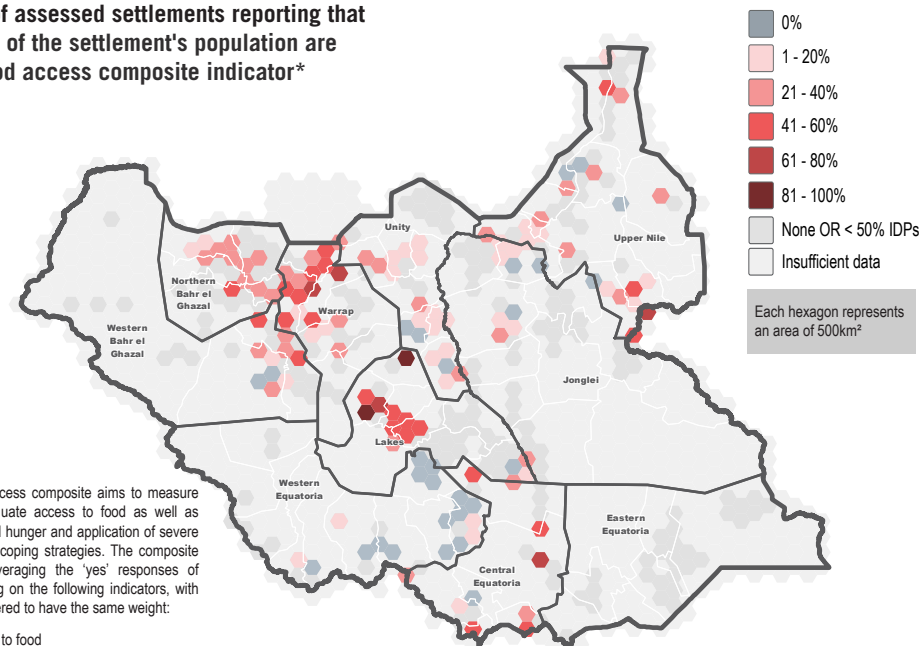
November 2019

IDP presence and access to services

Proportion of assessed settlements reporting that half or more of the settlement's population are IDPs



Proportion of assessed settlements reporting that half or more of the settlement's population are IDPs and food access composite indicator*



This simple food access composite aims to measure both levels of adequate access to food as well as severity of perceived hunger and application of severe consumption-based coping strategies. The composite was created by averaging the 'yes' responses of settlements reporting on the following indicators, with all indicators considered to have the same weight:

- Inadequate access to food
- Consuming one or no meals per day
- Skipping days to cope with a lack of food or money to buy food
- Perceived hunger from inadequate food access: severe or worst it can be
- Wild foods known to be making people sick consumed all the time

Access: Health service

Top five counties where the highest proportion of assessed settlements reported that half or more than half of the population consists of IDPs and that health services are unavailable

Canal/Pigi	32%	■
Gogrial East	14%	■
Malakal	14%	■
Juba	14%	■
Cueibet	10%	■

Access: Water

Top five counties where the highest proportion of assessed settlements reported that half or more than half of the population consists of IDPs and that there is no access to protected water points within a 30-minute walk

Malakal	93%	■
Mundri West	60%	■
Mvolo	56%	■
Canal/Pigi	50%	■
Mundri East	50%	■

Access: Markets

Top five counties where the highest proportion of assessed settlements reported that half or more than half of the population consists of IDPs and that there is no access to a functioning market within half a day's walk

Canal/Pigi	32%	■
Rumbek North	25%	■
Mvolo	11%	■
Twic	11%	■
Cueibet	10%	■

Access: Education

Top five counties where the highest proportion of assessed settlements reported that half or more than half of the population consists of IDPs and that education services are unavailable

Canal/Pigi	29%	■
Mvolo	28%	■
Mundri West	20%	■
Mundri East	14%	■
Ulang	13%	■